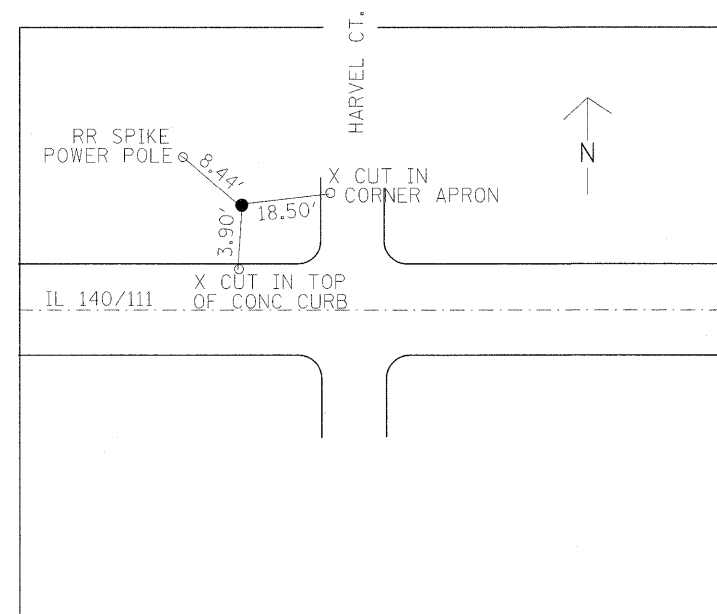
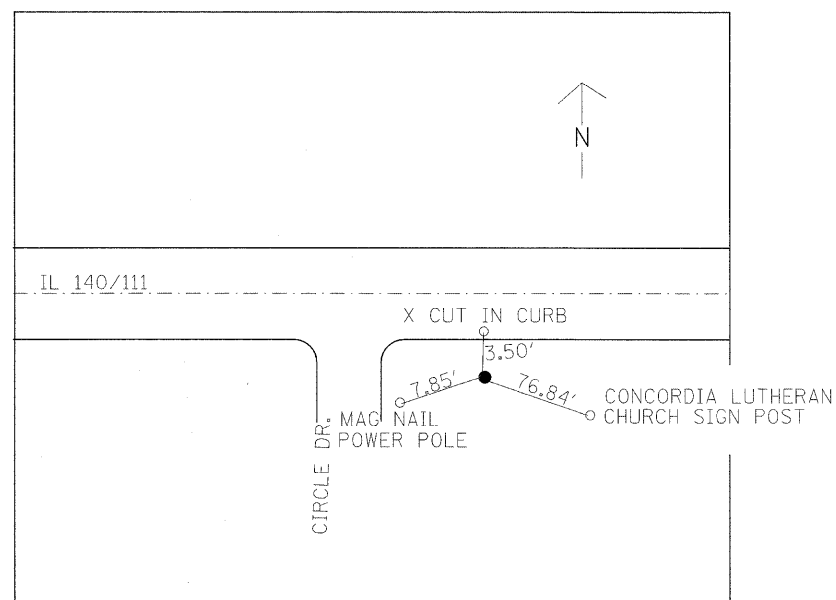


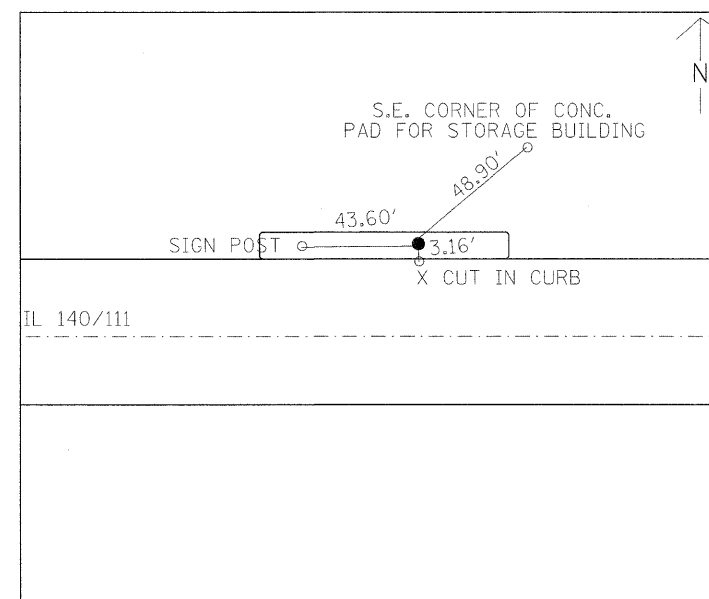
CONTROL PT 501  
REBAR WITH IDOT CAP  
STA. 493+46.82 41.81 RT  
N 814,392.7185  
E 324,180.6052



CONTROL PT 502  
REBAR WITH IDOT CAP  
STA. 487+74.06 39.19 LT  
N 814,526.4617  
E 323,617.8174



CONTROL PT 503  
REBAR WITH IDOT CAP  
STA. 477+95.89 39.27 RT  
N 814,641.8133  
E 322,645.0348



CONTROL PT 504  
REBAR WITH IDOT CAP  
STA. 471+94.98 38.62 LT  
N 814,941.84  
E 322,117.17

|   |                             |            |           |   |   |  |  |                    |                      |         |                 |              |
|---|-----------------------------|------------|-----------|---|---|--|--|--------------------|----------------------|---------|-----------------|--------------|
| FILE NAME =   | USER NAME = karlesal        | DESIGNED - | REVISED - | <b>STATE OF ILLINOIS<br/>DEPARTMENT OF TRANSPORTATION</b> | <b>TIE POINTS AND BENCHMARKS</b>                                      |  |  | F.A.P.<br>RTE.     | SECTION              | COUNTY  | TOTAL<br>SHEETS | SHEET<br>NO. |
| c:\pwwork\pwwork\karlesal\0169744\087688-sht-plan.dgn | PLOT SCALE = 50.0000' / IN. | DRAWN -    | REVISED - |   |   |  |  | 785                | (132-2,3,4, 133-1RS) | MADISON | 122             | 44           |
| PLOT DATE = 2/4/2011                                  | CHECKED -                   | REVISED -  | REVISED - |   | SCALE: _____ SHEET NO. _____ OF _____ SHEETS STA. _____ TO STA. _____ |  |  | CONTRACT NO. 76B80 |                      |         |                 |              |
|   | DATE -                      | REVISED -  | REVISED - |   | FED. ROAD DIST. NO. - ILLINOIS FED. AID PROJECT                       |  |  |                    |                      |         |                 |              |