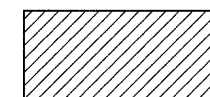
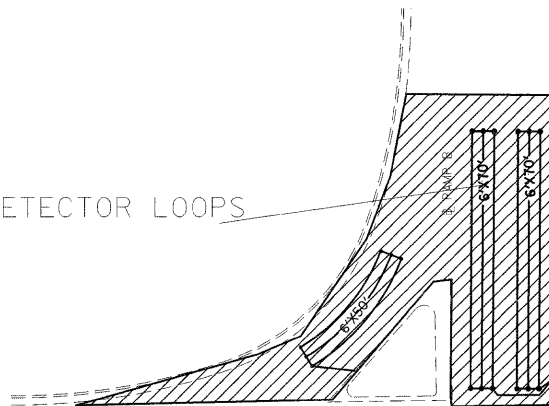


HOMER ADAMS PARKWAY
SB EXIT RAMP

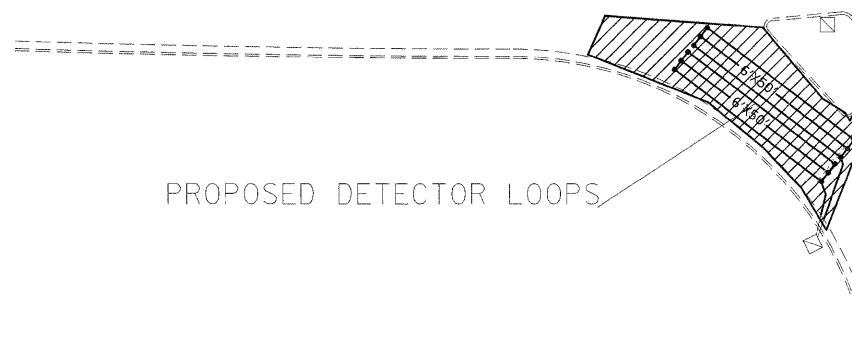
PROPOSED DETECTOR LOOPS



PROPOSED 1 1/2" BUTT JOINT (BJ)
INCIDENTAL HMA SURFACING
(2 1/2" @ EOP TO 1 1/2" @ BJ)

IL 140

PROPOSED DETECTOR LOOPS



HOMER ADAMS PARKWAY
SB ENTRANCE RAMP

FILE NAME =	USER NAME = #USER#	DESIGNED -	REVISED -	STATE OF ILLINOIS DEPARTMENT OF TRANSPORTATION	DETAILS	F.A.P. RTE.	SECTION	COUNTY	TOTAL SHEETS	SHEET NO.	
#FILE#		DRAWN -	REVISED -			785	(132-2,3,4, 133-1RS)	MADISON	122	70	
		CHECKED -	REVISED -			CONTRACT NO. 76B80					
		DATE -	REVISED -			FED. ROAD DIST. NO. - ILLINOIS FED. AID PROJECT					
				SCALE: _____ SHEET NO. ___ OF ___ SHEETS STA. _____ TO STA. _____							