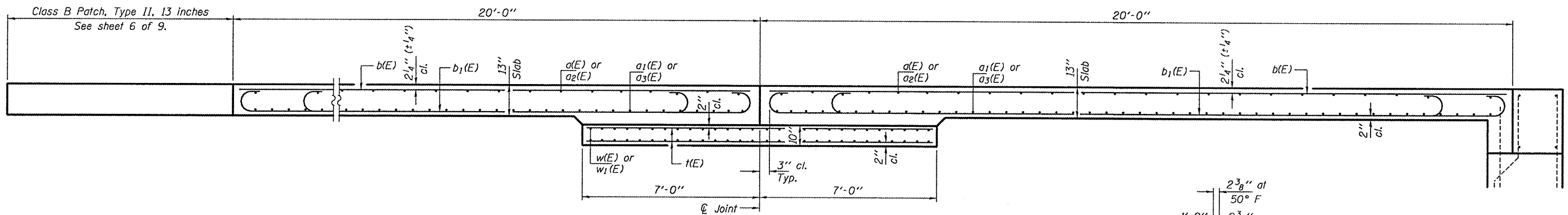
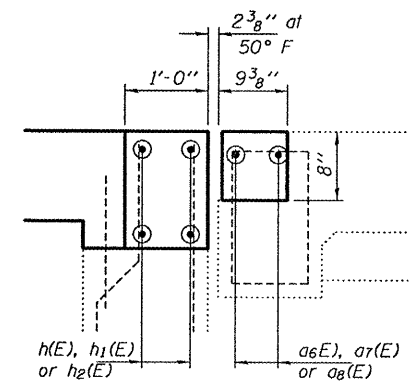


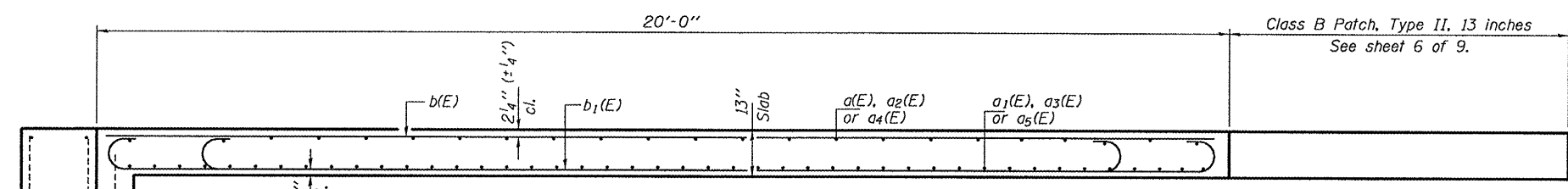
SECTION A-A



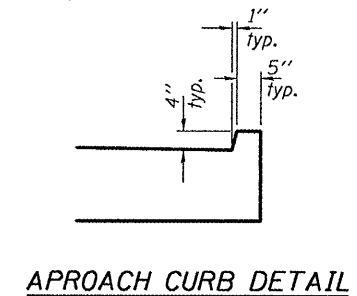
SECTION B-B



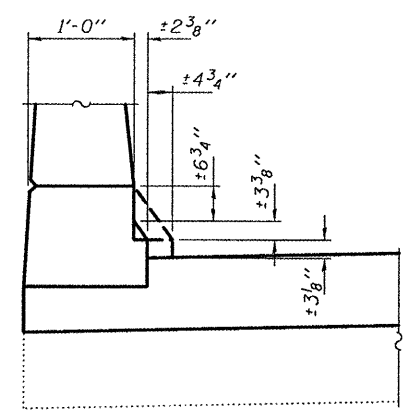
SECTION D-D



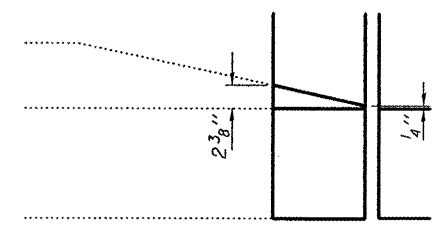
SECTION C-C



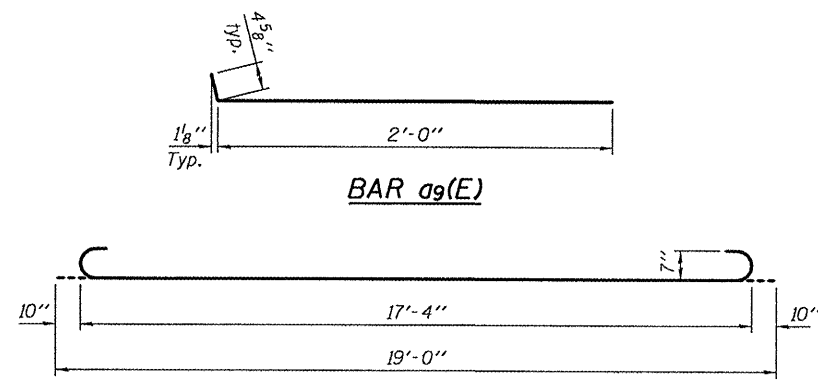
APPROACH CURB DETAIL



PARAPET DETAIL



DETAIL A



BAR a9(E)

BAR b1(E)

TWO STRUCTURES
BILL OF MATERIAL

Bar	No.	Size	Length	Shape	
a(E)	30	#4	19'-11"	—	
a1(E)	105	#5	19'-11"	—	
a2(E)	36	#4	20'-5"	—	
a3(E)	126	#5	20'-5"	—	
a4(E)	6	#4	20'-8"	—	
a5(E)	21	#5	20'-8"	—	
a6(E)	6	#6	20'-7"	—	
a7(E)	8	#6	21'-1"	—	
a8(E)	2	#6	21'-3"	—	
a9(E)	32	#4	2'-5"	—	
b(E)	204	#4	19'-8"	—	
b1(E)	570	#7	19'-0"	—	
b2(E)	8	#4	11'-8"	—	
h(E)	12	#6	20'-7"	—	
h1(E)	16	#6	21'-1"	—	
h2(E)	4	#6	21'-3"	—	
h(E)	72	#4	13'-9"	—	
w(E)	116	#5	10'-2"	—	
w1(E)	116	#5	6'-2"	—	
Reinforcement Bars, Epoxy Coated				Pound	35370
Concrete Superstructure				Cu. Yds.	202.8
Concrete Removal				Cu. Yds.	210.8
Concrete Structures				Cu. Yds.	23.2

DESIGNED IJL
 CHECKED ATH
 DRAWN baliva
 CHECKED IJL ATH

EXAMINED *James F. J...* DATE MARCH 16, 2011
 PASSED *Carl...*
 ACTING ENGINEER OF STRUCTURAL SERVICES
 ACTING ENGINEER OF BRIDGES AND STRUCTURES

STATE OF ILLINOIS
 DEPARTMENT OF TRANSPORTATION

REPAIR DETAILS
 003-0009 (EB) & 003-0010 (WB)

F.A.I. SECTION COUNTY TOTAL SHEET SHEET NO.
 RTE. TO 3-481-1 BOND 35 8
 CONTRACT NO. 76E23
 ILLINOIS FED. AID PROJECT