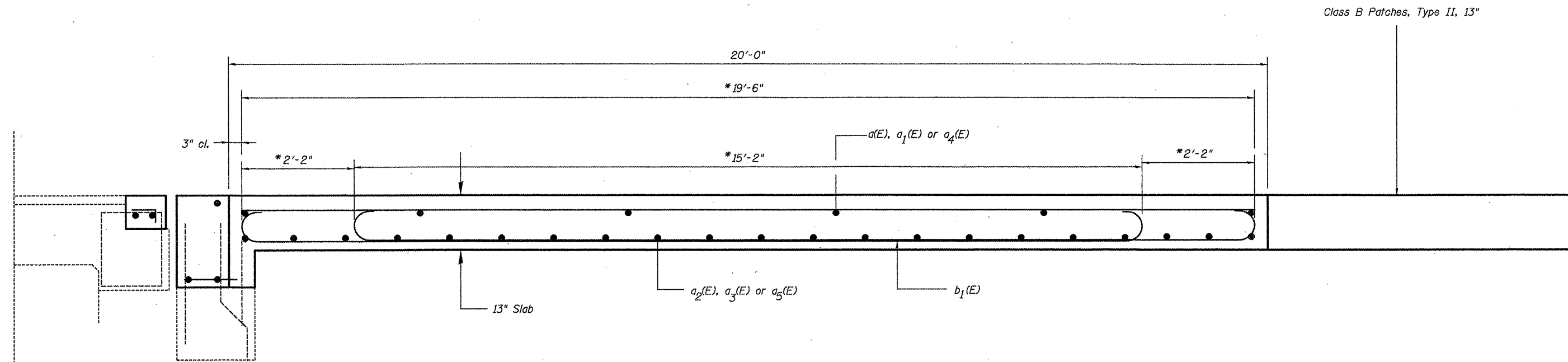
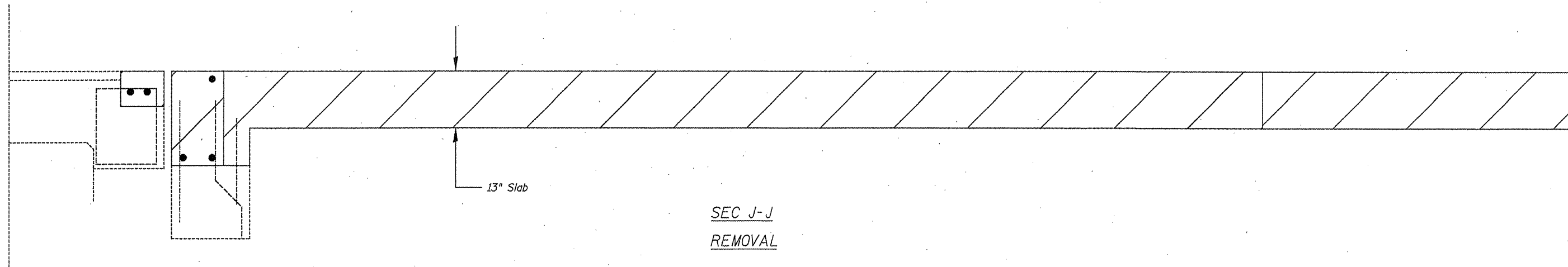


STATE OF ILLINOIS
DEPARTMENT OF TRANSPORTATION



* Stagger alternate $b_1(E)$ bars as shown on plan - See sheets 4-7 of 31
See sheet 26 of 31 for patch details
See sheet 25 of 31 for $b_1(E)$ bar details

SEC K-K
CONSTRUCTION

DESIGNED - AYV	EXAMINED _____	DATE - February 18, 2011
CHECKED - ---	ENGINEER OF STRUCTURAL SERVICES	
DRAWN - AYV	PASSED _____	
CHECKED - ---	ENGINEER OF BRIDGES AND STRUCTURES	

STATE OF ILLINOIS
DEPARTMENT OF TRANSPORTATION

EAST APPROACH

SHEET NO. 27 OF 32 SHEETS

F.A.I. RTE.	SECTION	COUNTY	TOTAL SHEETS	SHEET NO.
70	3-4B1-1	Bond	35	30
CONTRACT NO. 76E23			ILLINOIS FED. AID PROJECT	