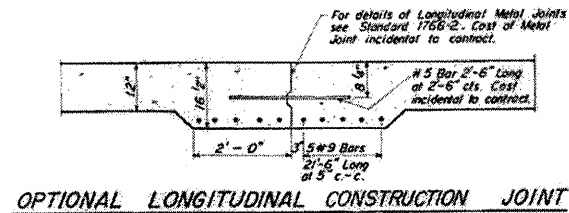
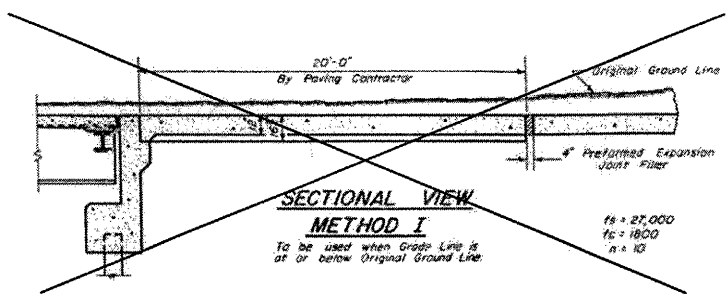


**DETAILS OF BRIDGE APPROACHES
FOR FEDERAL AID INTERSTATE ROUTES**



As approved by the Engineer, the Contractor may elect to reduce the widths of pour by use of the Optional Longitudinal Construction Joint shown. Joint shall be located at the edge of Traffic Lane.

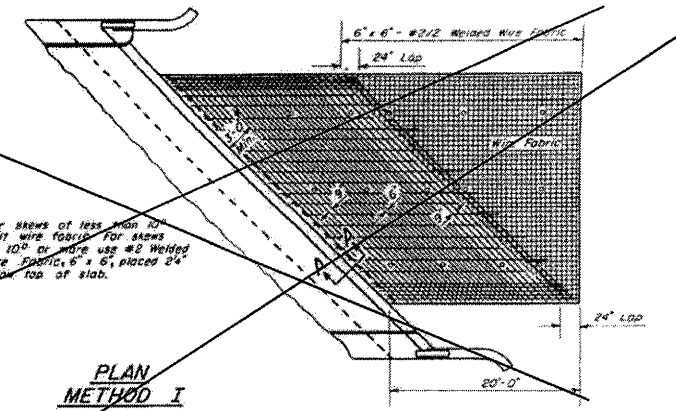
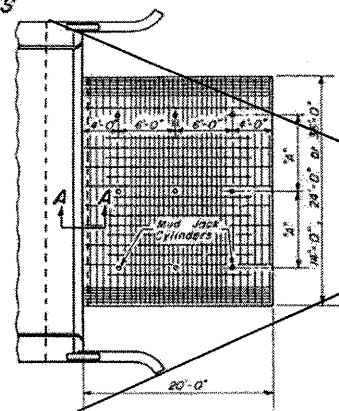
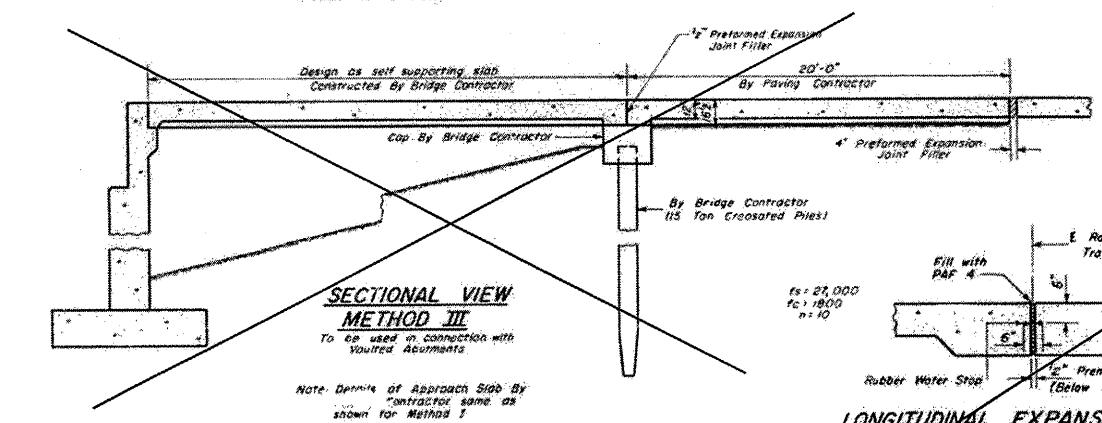
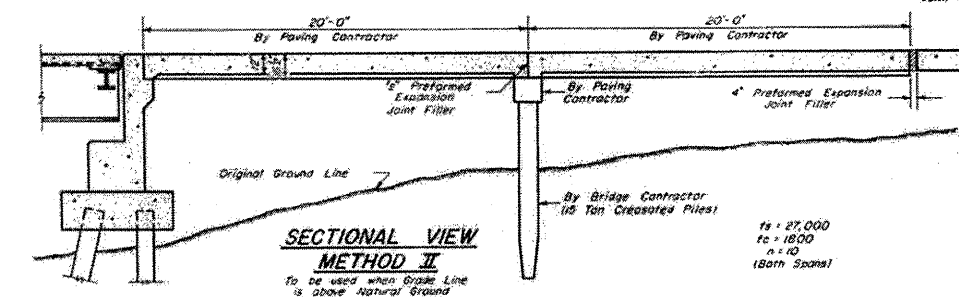


TABLE OF "A" DIMENSIONS

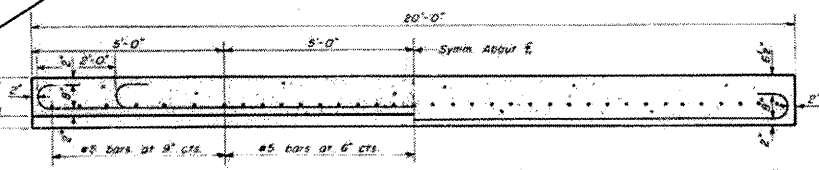
Width of Approach Slab	Dimension "A" (Spacing of Mud Jack Cylinders)
14'	6'-0"
24'	8'-0"
36'	2 Spaces at 8'-0"

Expanded Metal weighing not less than 78 Lbs. per 100 sq ft or 12 welded bar mat weighing not less than 78 Lbs. per 100 sq ft having members of equal size in both directions and spaced not over 48" apart may be used instead of the #2 Welded Wire Fabric, 6" x 6", provided the expanded metal or bar mat is furnished at no additional cost to the State.



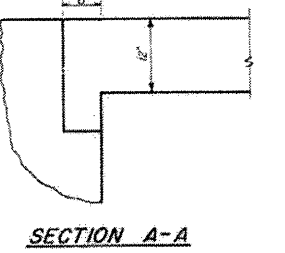
Note: Details of Approach Slab By Contractor same as shown for Method I.

LONGITUDINAL EXPANSION JOINT
To be used when Approach Slabs are greater than 36'-0" wide. Joint shall be placed at edge of Traffic Lane nearest to the E of the total width of Approach Slab.



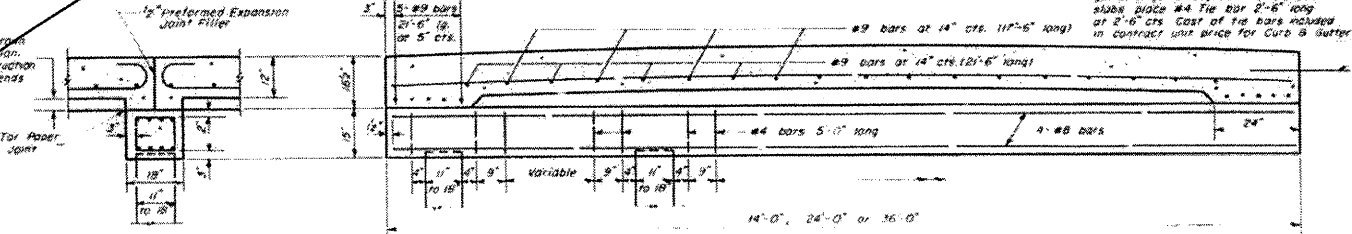
LONGITUDINAL SECTION THRU THICKENED EDGE OF SLAB

Note: When road signs show curb and gutter or gutter adjacent to approach slabs place #4 Tie Bar 2'-6" long at 2'-6" c-c. Cost of the bars included in contract unit price for Curb & Gutter or Gutter.



DETAIL OF MUD JACK CYLINDER
Cylinders shall be filled with clay and slabs shall be tamped.

Variable for curb or super-elevation. Similar construction at adjacent ends.



SECTIONAL VIEW OF CONCRETE SLAB AND CAP

GENERAL NOTES

The slab or slabs will be paid for at the contract unit price for PORTLAND CEMENT CONCRETE PAVEMENT (16'-0" x 12" x 16'-0"). The concrete cap will be paid for at the contract unit price for CLASS 3 CONCRETE.

All Reinforcement Bars, except the bars for curb and gutter or gutter, will be paid for at the contract unit price for REINFORCEMENT BARS.

The Welded Wire Fabric, Mud Jack Cylinders and Preformed Expansion Joint Filler shall be included in the unit price bid for PORTLAND CEMENT CONCRETE PAVEMENT (16'-0" x 12" x 16'-0").

Preformed Expansion Joint Filler shall conform to Section 129 of the Standard Specifications.

Width of Bridge Approach Slab pours shall be determined before the reinforcement bars are fabricated.

Quantities shown for Reinforcement Bars are for two(2) thickened edges only.

**FOR INFORMATION ONLY
1959 Bridge Approach Pavement
Standard 2138-1**

STANDARD 2138-1

REVISIONS	DATE
1	2-2-59
2	6-22-59

DESIGNED *John Uehle*
CHECKED *Brad Williams*
DRAWN *John Uehle*
CHECKED *Brad Williams*

APPROVED *Dec 8 '58*
ENGINEER OF DESIGN