

STATE OF ILLINOIS
DEPARTMENT OF TRANSPORTATION
DIVISION OF HIGHWAYS

**PROPOSED
HIGHWAY PLANS**

FAP ROUTE 793 (IL 143)
SECTION 112-1
PROJECT HSIP-0793(021)
HSIP - SAFETY SHOULDER & RUMBLE STRIP
BOND COUNTY

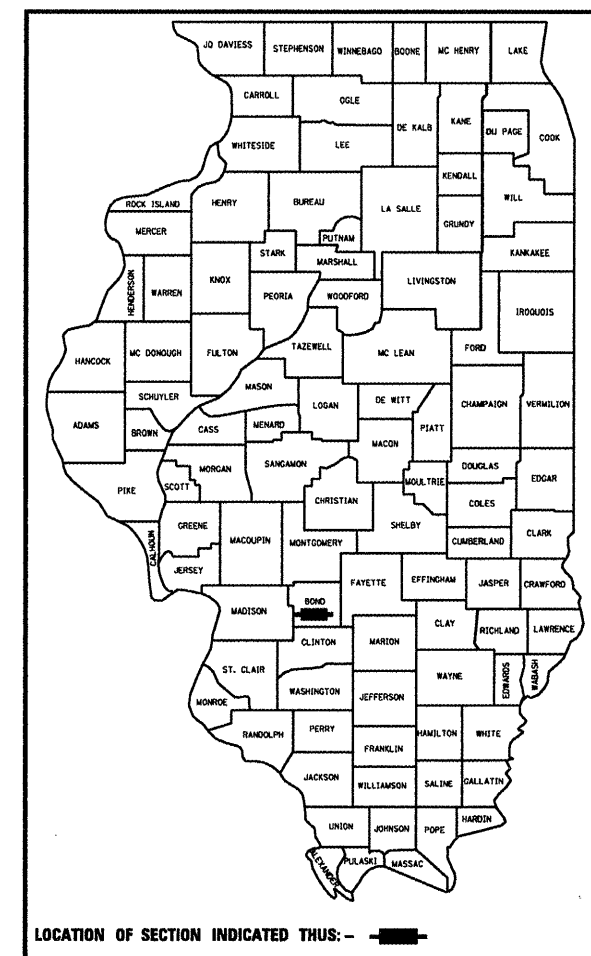
C-98-011-11

F.A.P. RTE.	SECTION	COUNTY	TOTAL SHEETS	SHEET NO.
793	112-1	BOND	8	1
		ILLINOIS	CONTRACT NO. 76E32	

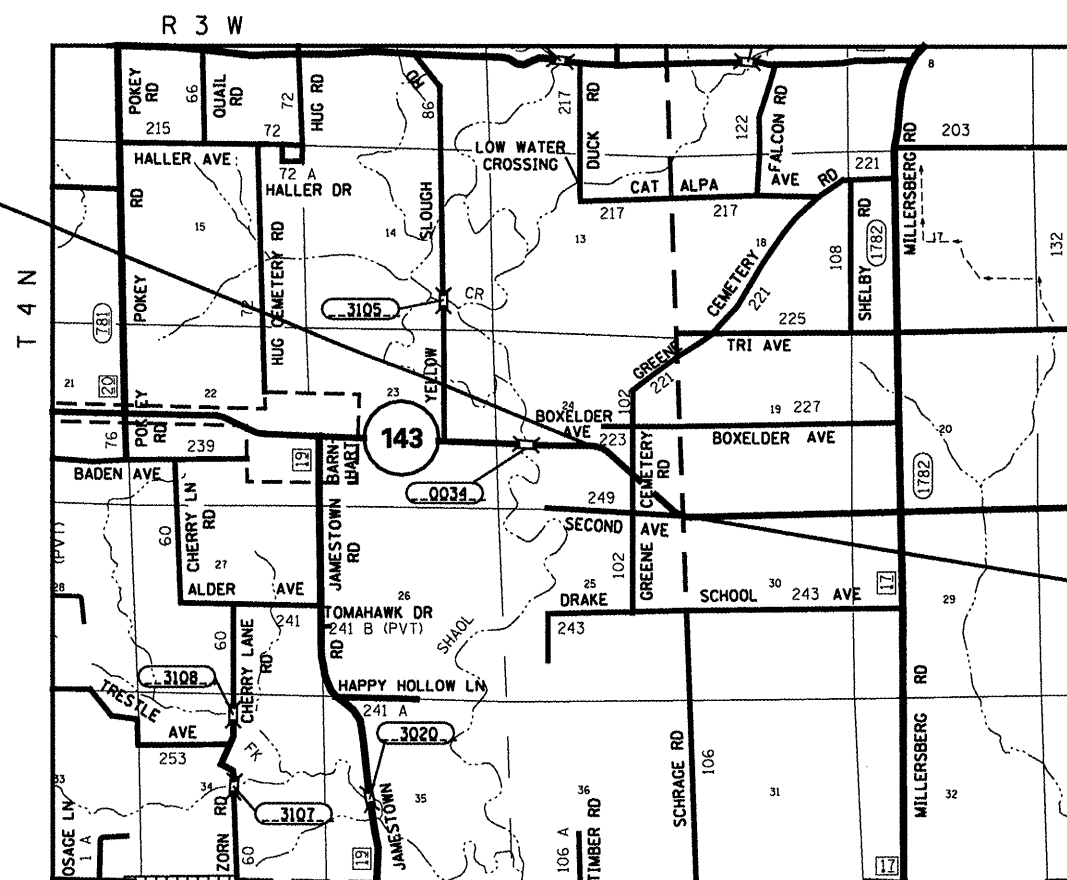
INDEX OF SHEETS

1. COVER SHEET, PROJECT LIMITS, ADT
2. GENERAL NOTES, STANDARDS, COMMITMENTS
3. SUMMARY OF QUANTITIES
4. LOCATION MAP
5. SCHEDULES
6. TYPICAL SECTION
- 7.-8. CROSS SECTION SHEETS

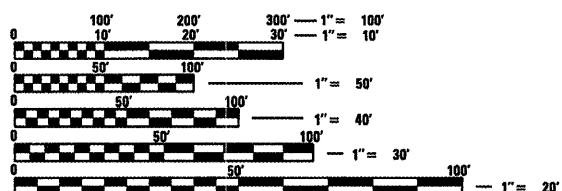
D-98-012-11



BEGIN PROJECT:
STA. 407 + 00
LAT: 38.775802
LONG: -89.495812



END PROJECT:
STA. 451 + 00
LAT: 38.769712
LONG: -89.481209



FULL SIZE PLANS HAVE BEEN PREPARED USING STANDARD ENGINEERING SCALES. REDUCED SIZED PLANS WILL NOT CONFORM TO STANDARD SCALES. IN MAKING MEASUREMENTS ON REDUCED PLANS, THE ABOVE SCALES MAY BE USED.

J.U.L.I.E.
JOINT UTILITY LOCATION INFORMATION FOR EXCAVATION
1-800-892-0123
OR 811

PROJECT ENGINEER: PATTI LEBEAU (618)346-3179
PROJECT MANAGER: CHERYL KEPLAR (618)346-3186

CONTRACT NO. 76E32

GROSS LENGTH = 4,400 FT. = 0.83 MILE
NET LENGTH = 4,400 FT. = 0.83 MILE

NOT TO SCALE

FUNCTIONAL CLASSIFICATION:
RURAL MINOR ARTERIAL

TRAFFIC DATA:
2009 = 2050
2011 = 2100
2030 = 2600
SU = 4.4%
MU = 4.9%

STATE OF ILLINOIS
DEPARTMENT OF TRANSPORTATION
DIVISION OF HIGHWAYS

SUBMITTED *Feb 7 2011*
Scott E. Stitt
DEPUTY DIRECTOR OF HIGHWAYS, REGION 5 ENGINEER

March 20 11
Scott E. Stitt, P.E.
active ENGINEER OF DESIGN AND ENVIRONMENT

March 20 11
Christine M. Reader
DIRECTOR OF HIGHWAYS, CHIEF ENGINEER

PRINTED BY THE AUTHORITY
OF THE STATE OF ILLINOIS