

STATE OF ILLINOIS
DEPARTMENT OF TRANSPORTATION
DIVISION OF HIGHWAYS

**PROPOSED
HIGHWAY PLANS**

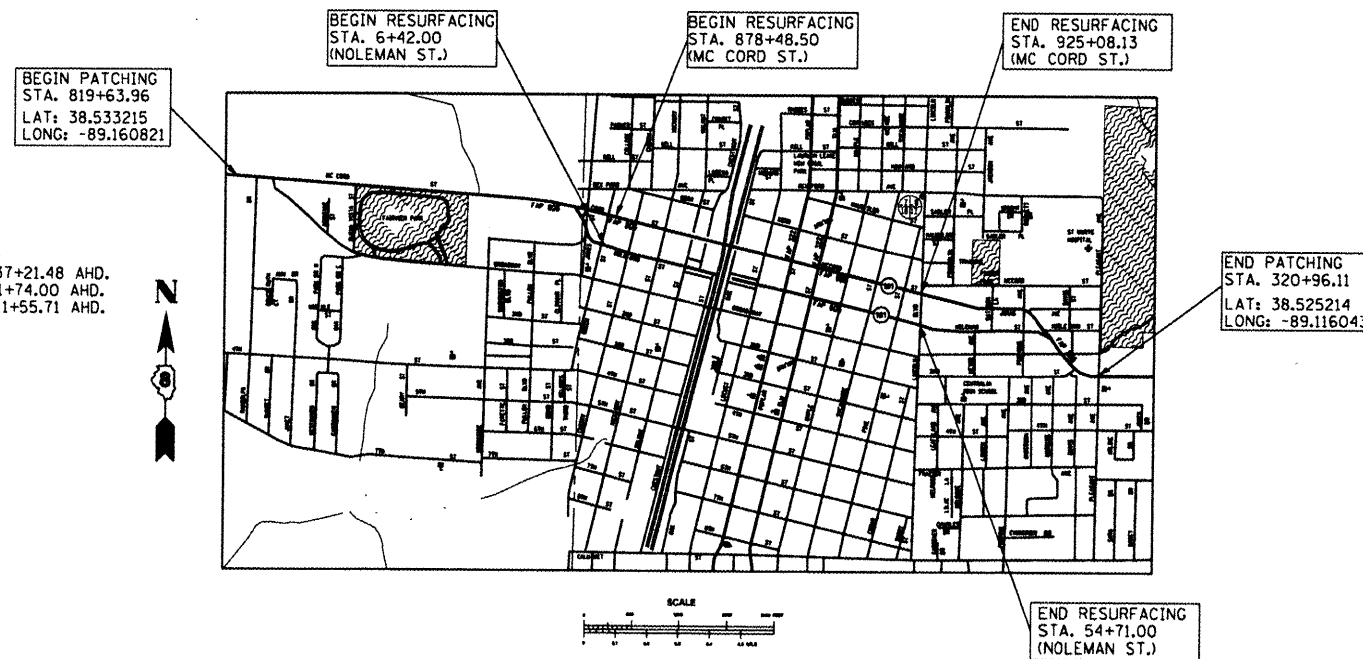
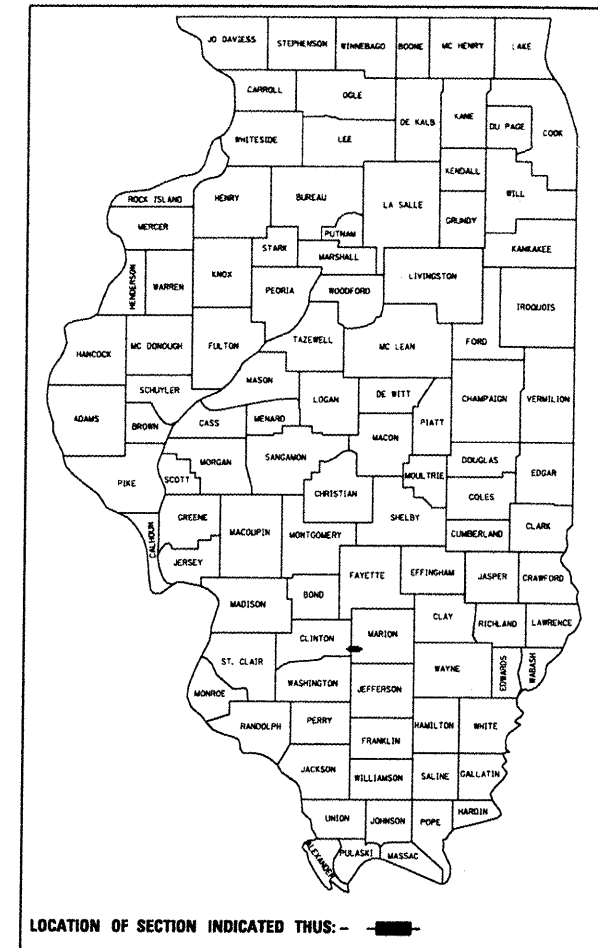
FAP ROUTE 805 (IL 161)
SECTION (7Z-2, 8Z-2)RS-1
PROJECT ACF-0805(072)
PATCHING & RESURFACING
MARION & CLINTON COUNTIES

C-98-003-11

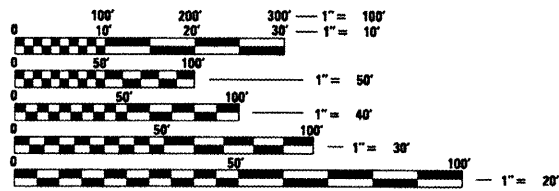
F.A.P. RTE.	SECTION	COUNTY	TOTAL SHEETS	SHEET NO.
805	(7Z-2, 8Z-2)RS-1	ILLINOIS	21	1
CONTRACT NO. 76E51			CLINTON/MARION	

FOR INDEX OF SHEETS, SEE SHEET NO. 2

D-98-006-11



STATION EQUATION
STA. 937+20.78 BK = STA. 937+21.48 AHD.
STA. 54+71.00 BK = STA. 291+74.00 AHD.
STA. 948+03.17 BK = STA. 311+55.71 AHD.



FULL SIZE PLANS HAVE BEEN PREPARED USING STANDARD ENGINEERING SCALES. REDUCED SIZED PLANS WILL NOT CONFORM TO STANDARD SCALES. IN MAKING MEASUREMENTS ON REDUCED PLANS, THE ABOVE SCALES MAY BE USED.

J.U.L.I.E.
JOINT UTILITY LOCATION INFORMATION FOR EXCAVATION
1-800-892-0123
OR 811

GROSS LENGTH = 12,697 FT. = 2.4 MILES
NET LENGTH = 12,967 FT. = 2.4 MILES

PROJECT ENGINEER: PATTI LEBEAU (618) 346-3179
PROJECT MANAGER: CHERYL KEPLAR (618) 346-3186

CONTRACT NO. 76E51

TRAFFIC DATA	2011 ADT	2031 ADT	SU	MU
RANDOLPH DR. TO BEECH ST.	9900	11400	2.0	2.3
BEECH ST. TO LINCOLN BLVD.	9300	11500	5.3	2.4
LINCOLN BLVD. TO PLEASANT AVE.	13100	15100	4.7	2.4

STATE OF ILLINOIS
DEPARTMENT OF TRANSPORTATION
DIVISION OF HIGHWAYS

SUBMITTED Feb 7 2011
M. C. Chami
DEPUTY DIRECTOR OF HIGHWAYS, REGION 5 ENGINEER

March 25 2011
Scott E. Stitt P.E.
ENGINEER OF DESIGN AND ENVIRONMENT

March 25 2011
Christine M. Reed
DIRECTOR OF HIGHWAYS, CHIEF ENGINEER

PRINTED BY THE AUTHORITY
OF THE STATE OF ILLINOIS