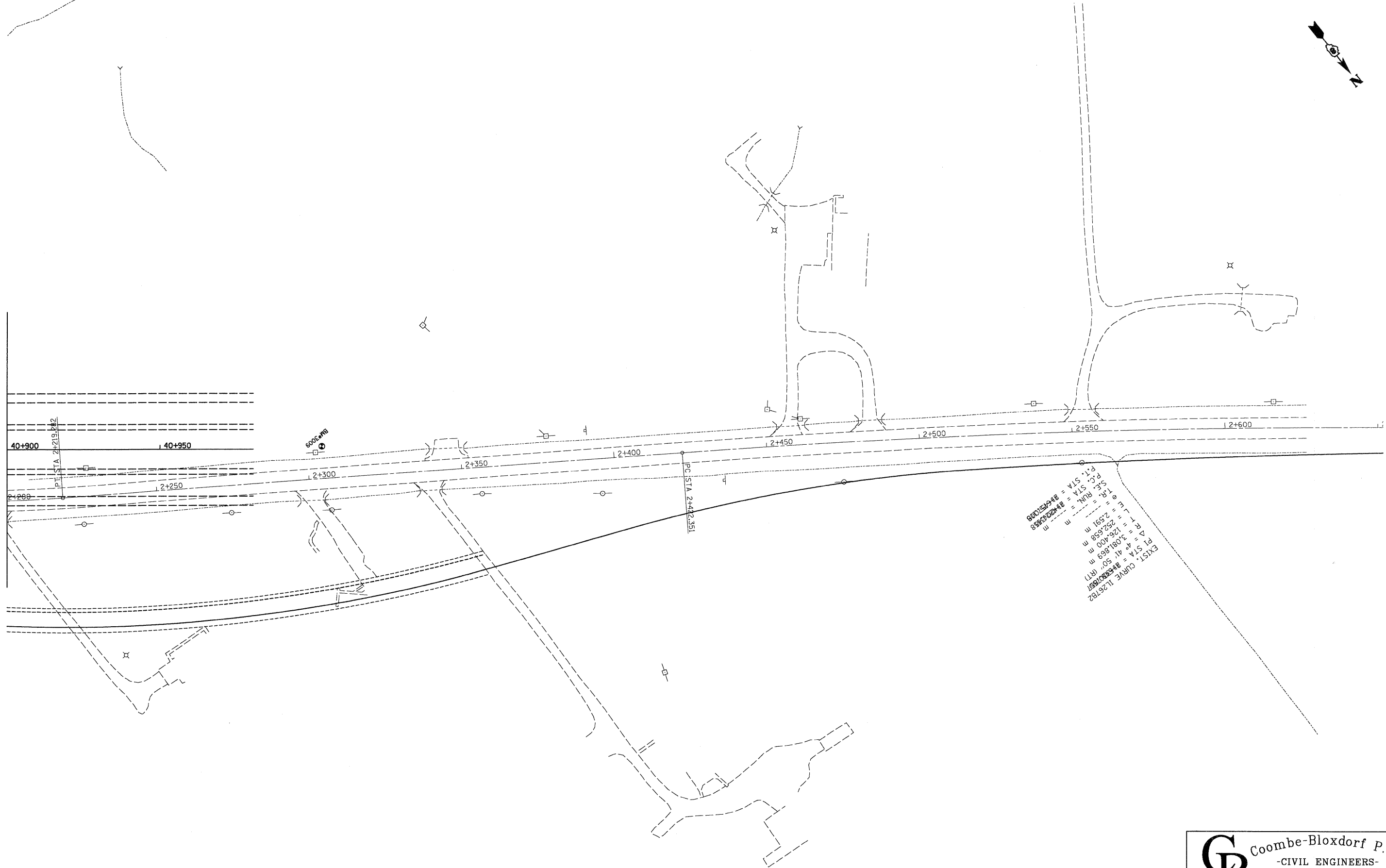




MATCH LINE STA. 40+900.00



EXIST. CURVE I.L. 26782
 P.I. STA = 2+219.682
 P.C. STA = 2+239.698
 T.R. = 2+591 m
 S.C. STA = 2+591 m
 P.T. STA = 2+591 m
 P.I. STA = 2+219.682 m
 P.C. STA = 2+239.698 m
 T.R. = 2+591 m
 S.C. STA = 2+591 m
 P.T. STA = 2+591 m

FILE NAME =
 ...sign-fap310-plan-sheet-15.dgn
 CB PROJECT NO 09026-9

USER NAME = CFC...
 PLOT SCALE = 15.000000' / IN.
 PLOT DATE = 2/1/2011

DESIGNED -	REVISD -
DRAWN - CFC	REVISD -
CHECKED - MCB	REVISD -
DATE - / /	REVISD -

STATE OF ILLINOIS
DEPARTMENT OF TRANSPORTATION

SIGNING PLAN
IL 255 (FAP 310)

SCALE: SHEET NO. OF SHEETS STA. 40+900 TO STA. 40+980.50

CB

Coombe-Bloxdorf P.C.

- CIVIL ENGINEERS -

- STRUCTURAL ENGINEERS -

- LAND SURVEYORS -

Design Firm License No. 184-002703

F.A.P. RTE.	SECTION	COUNTY	TOTAL SHEETS	SHEET NO.
310	60-155G	MADISON	54	23
			CONTRACT NO. 76E76	

[ILLINOIS] FED. AID PROJECT