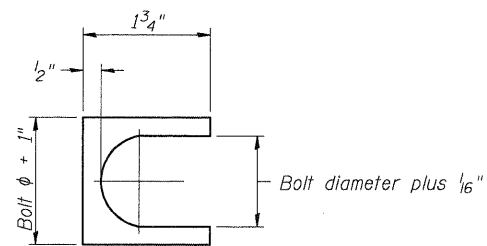


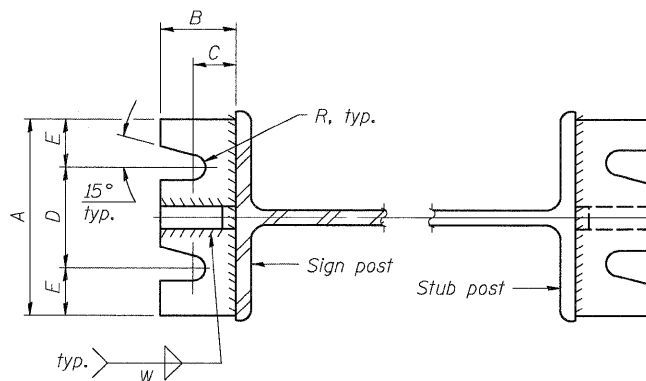
**ELEVATION**

0.15W	2 spaces at 0.35W	0.15W	for 3 posts
0.125W	3 spaces at 0.25W	0.125W	for 4 posts
0.1W	4 spaces at 0.2W	0.1W	for 5 posts
0.1W	5 spaces at 0.16W	0.1W	for 6 posts
0.08W	6 spaces at 0.14W	0.08W	for 7 posts



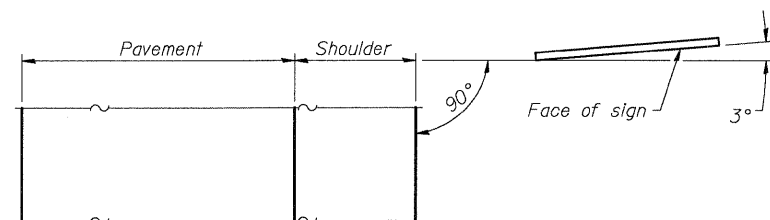
**SHIM DETAIL**

Furnish two 0.01" thick and two 0.03" thick stainless steel or brass (ASTM B36) shims per post.

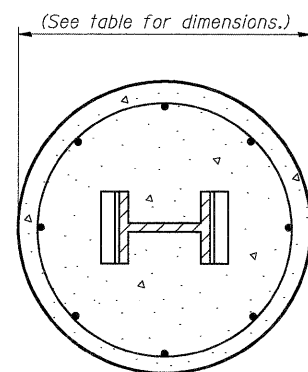


**SECTION A-A**

**SECTION B-B**



**LOCATION SKETCH**



**SECTION C-C**

**GENERAL NOTES**

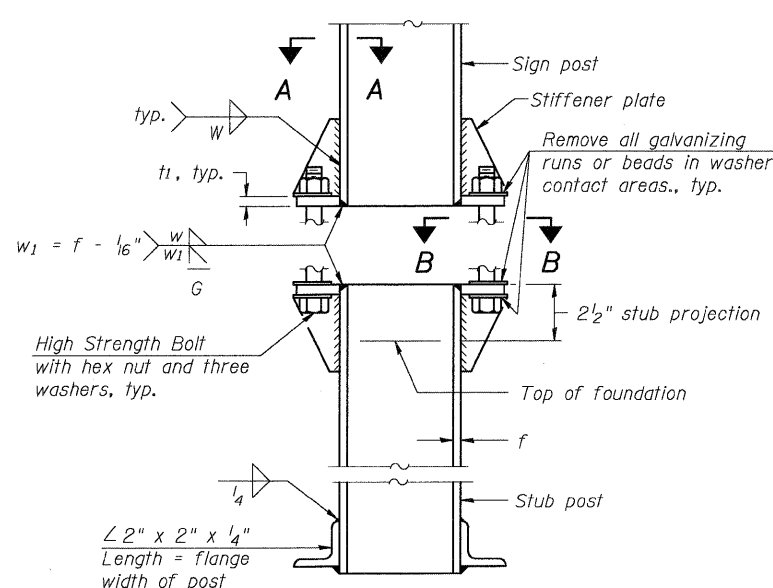
Posts shall be plumbed by using shims with post-to-stub post connection bolts snug tight only. Final tightening of all High Strength Bolts shall be in accordance with Article 727.05 and threads at the junction of the bolt and nut shall be burred or center punched to prevent the nut from loosening.

LOADING: 80 m.p.h. wind with 30% gust factor, normal to sign.

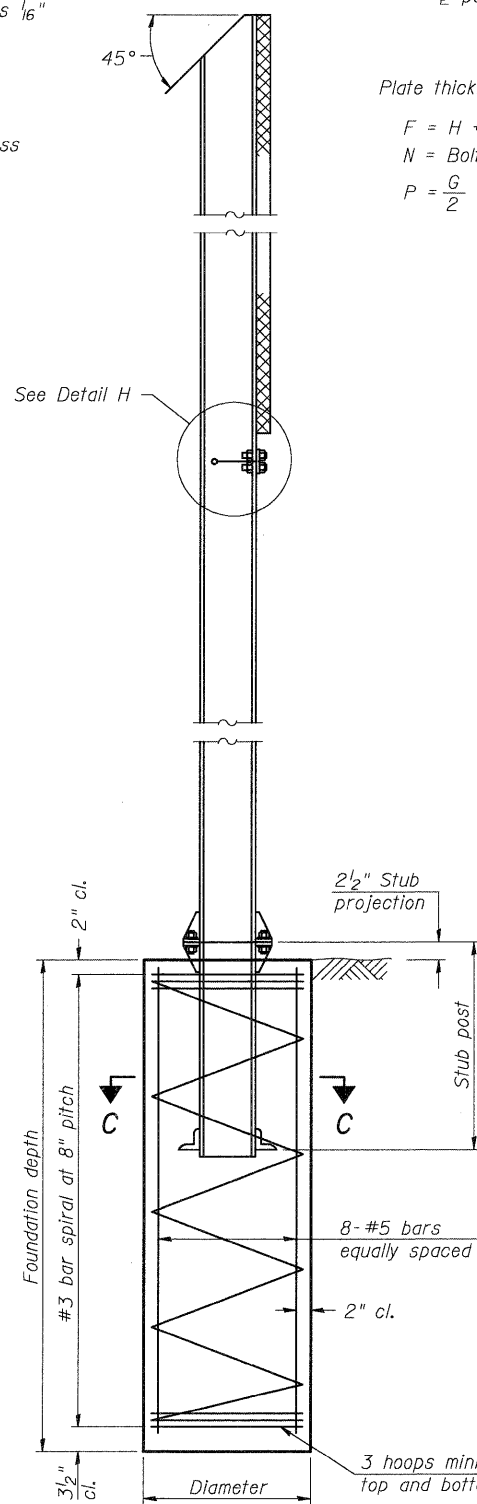
DESIGN STRESSES:  
 Structural steel - 20,000 p.s.i.  
 Reinforcing steel - 20,000 p.s.i.  
 Concrete - 1,400 p.s.i.  
 Footing soil pressure - 2,000 p.s.f.

After fabrication, the post, fuse plate and upper 6", min. of the stub post shall be hot-dip galvanized in accordance with AASHTO M111. All bolts, nuts and washers shall be hot-dip galvanized in accordance with AASHTO M232.

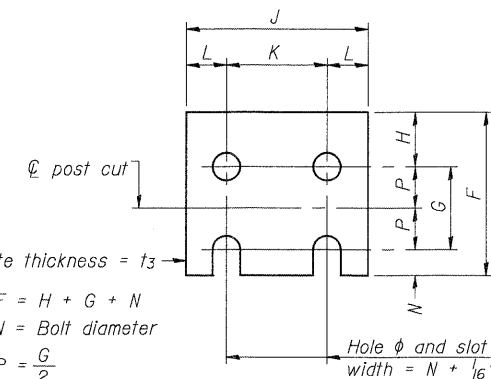
Work this sheet with Base Sheet BAW-A-2.



**ELEVATION  
SIGN POST & STUB POST**



**SECTION D-D**

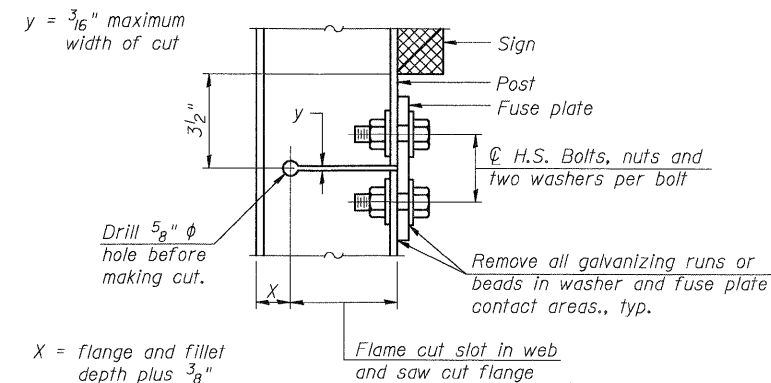


**FUSE PLATE DETAIL**

(Install with notches down.)

Plate thickness =  $t_3$   
 $F = H + G + N$   
 $N = \text{Bolt diameter}$   
 $P = \frac{G}{2}$

FUSE PLATE DATA		
N = Bolt Diameter	G	H
1/2"	2"	1 1/8"
5/8"	2 1/4"	1 1/4"
3/4"	2 1/2"	1 3/8"
7/8"	2 3/4"	1 1/2"
1"	3"	1 5/8"
1 1/8"	3 1/4"	1 3/4"
1 1/4"	3 1/2"	1 7/8"



**DETAIL H**

**STIFFENER PLATE DETAIL**

BAW-A-1

7-1-10

FILE NAME = ...break-away-post-detail.dgn  
 CB PROJECT NO. 09025-6

USER NAME = JFC.  
 PLOT SCALE = 0.1:0.00000 '1' / IN.  
 PLOT DATE = 2/1/2011

DESIGNED -  
 CHECKED -  
 DRAWN -  
 CHECKED -

REVISED -  
 REVISED -  
 REVISED -  
 REVISED -

STATE OF ILLINOIS  
 DEPARTMENT OF TRANSPORTATION

BREAK-AWAY WIDE FLANGE  
 STEEL SIGN POST DETAILS

SHEET NO. OF SHEETS

**CB** Coombe-Bloxdorf P.C.  
 -CIVIL ENGINEERS-  
 -STRUCTURAL ENGINEERS-  
 -LAND SURVEYORS-

Design Firm License No. 184-002703

F.A.P. RTE.	SECTION	COUNTY	TOTAL SHEETS	SHEET NO.
310	60-15SG	MADISON	54	29

CONTRACT NO. 76E76  
 ILLINOIS FED. AID PROJECT

(Sheet 1 of 2)