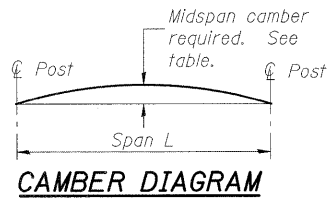


STATE OF ILLINOIS
DEPARTMENT OF TRANSPORTATION

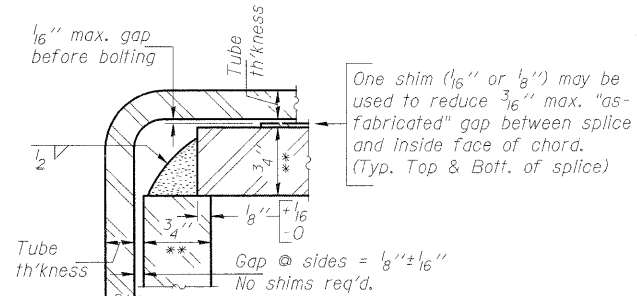
ROUTE NO.	SECTION	COUNTY	TOTAL SHEETS	SHEET NO.
FAP 310	60-15SG	MADISON	54	32
FED. ROAD DIST. NO. 7	ILLINOIS	FED. AID PROJECT		

SHEET NO. 2
6 SHEETS

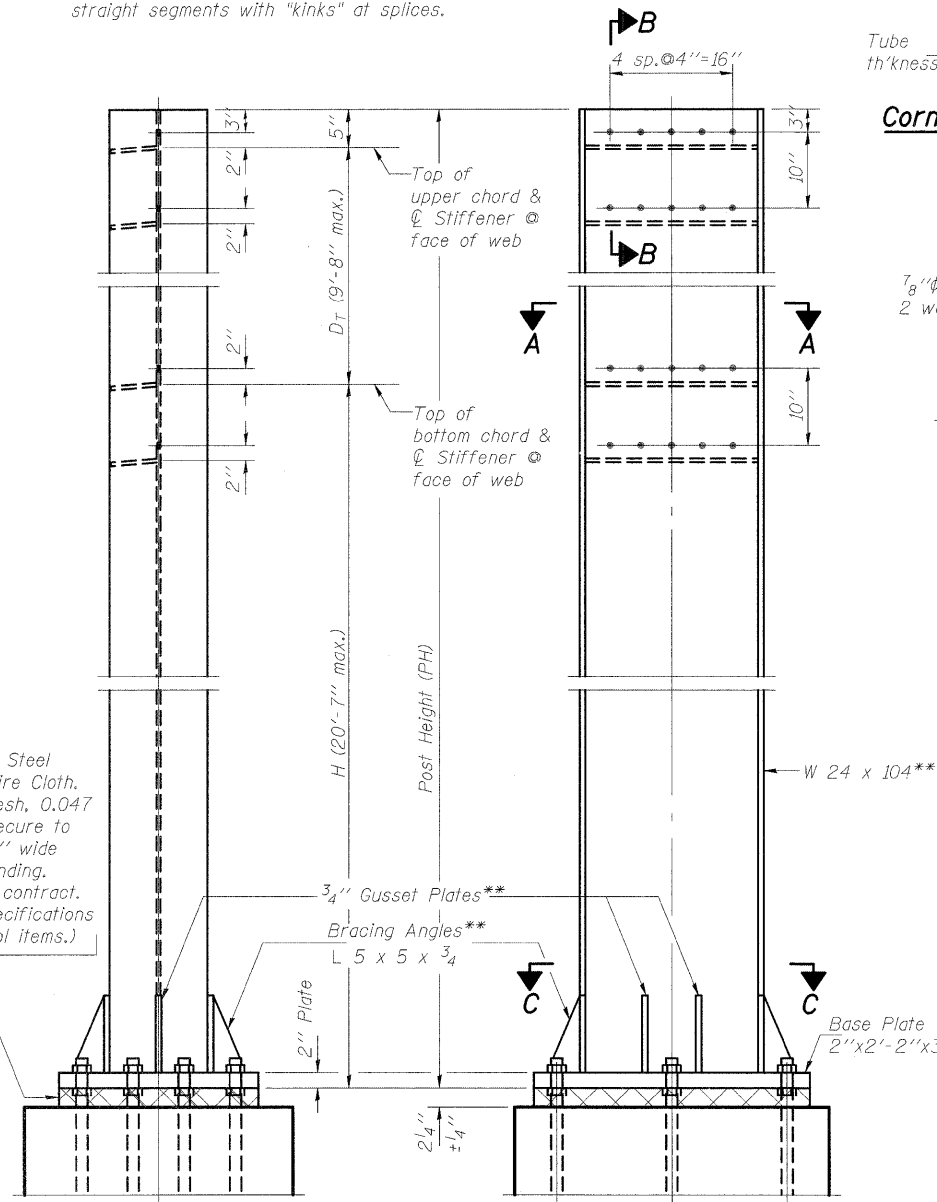
Contract #76E76



Camber may be either continuous curve or straight segments with "kinks" at splices.



Span L	Camber at Midspan	Chord **	Vertical **	Post **
Up to 50'	2"	TS 14 x 6 x $\frac{3}{8}$	TS 10 x 6 x $\frac{3}{8}$	W 24 x 104
51' to 70'	4"	TS 14 x 6 x $\frac{3}{8}$	TS 10 x 6 x $\frac{3}{8}$	W 24 x 104
71' to 80'	4"	TS 14 x 6 x $\frac{3}{8}$	TS 10 x 6 x $\frac{3}{8}$	W 24 x 104
81' to 90'	6"	TS 18 x 6 x $\frac{1}{2}$	TS 14 x 6 x $\frac{3}{8}$	W 24 x 104
91' to 100'	6"	TS 18 x 6 x $\frac{1}{2}$	TS 14 x 6 x $\frac{3}{8}$	W 24 x 104
101' to 110'	6"	TS 18 x 6 x $\frac{5}{8}$	TS 14 x 6 x $\frac{1}{2}$	W 24 x 104
111' to 124'	6"	TS 18 x 6 x $\frac{5}{8}$	TS 14 x 6 x $\frac{1}{2}$	W 24 x 104

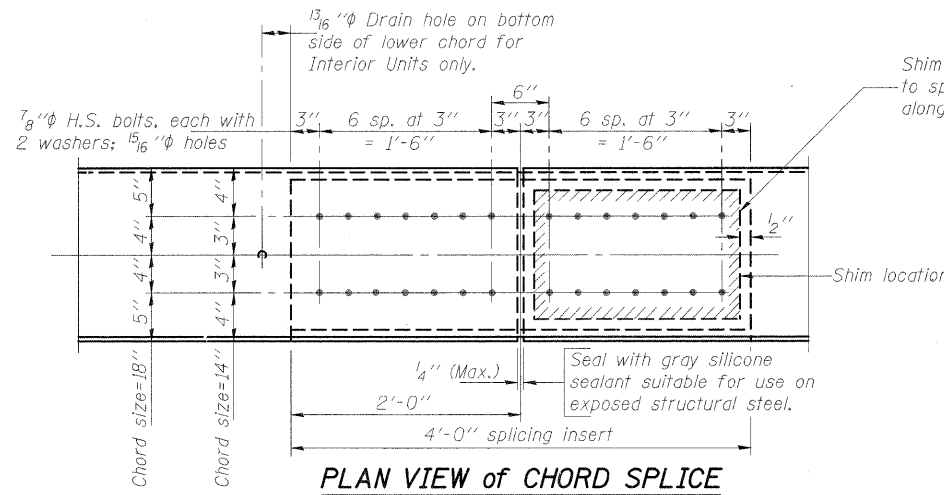


END ELEVATION

SIDE ELEVATION

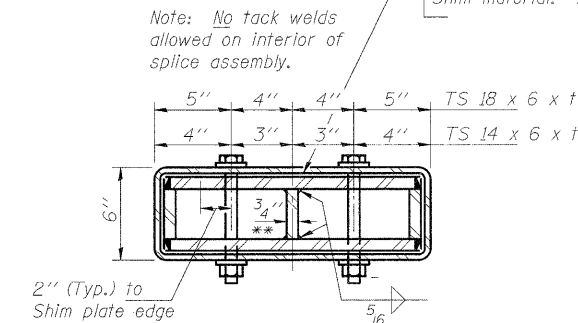
POST

Corner of Chord Splice



Shim may be tack welded to splice for installation along this edge only.

Provide $\frac{1}{16}$ " and $\frac{1}{8}$ " thick shim plates each side of each joint for $\frac{1}{16}$ " maximum clearances top & bottom before bolting. 10" x 1'-11" long for TS 14 x 6 x t and 12" x 1'-11" long for TS 18 x 6. Shim material: ASTM A606, A607, A570 or similar.

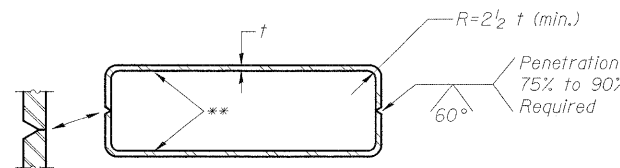


Sign Structure Number	Station	Span L	DT	Camber @ Midspan	Exterior Unit Lgth. (LE)	Interior Unit Lgth. (LI)	No. of Panels (N)	Panel Space (P)	Chord Size	Vertical Size	End Space Dim. E	Left Post Dim. H	PH Left	Right Post Dim. H	PH Right
8S060S255R017.2	36+000	53	9'-8"	4"	26'-6"	X	4	6'-2"	TS14 x 6 x $\frac{3}{8}$	TS10 x 6 x $\frac{3}{8}$	1'-10"	20'	30'-1"	20'	30'-1"
8S060S255R018.6	38+225	53	9'-8"	4"	26'-6"	X	4	6'-2"	TS14 x 6 x $\frac{3}{8}$	TS10 x 6 x $\frac{3}{8}$	1'-10"	20'	30'-1"	20'	30'-1"
8S060S255R019.3	39+450	65	9'-8"	4"	32'-6"	X	5	6'-1"	TS14 x 6 x $\frac{3}{8}$	TS10 x 6 x $\frac{3}{8}$	2'-1"	17'-10"	27'-11"	20'-2"	30'-3"
8S060S255L020.0	40+450	63	9'-8"	4"	29'-7"	X	5	5'-11"	TS14 x 6 x $\frac{3}{8}$	TS10 x 6 x $\frac{3}{8}$	1'-11"	19'-8 $\frac{1}{2}$ "	29'-9 $\frac{1}{2}$ "	19'-8 $\frac{1}{2}$ "	29'-9 $\frac{1}{2}$ "

** Indicates CVN test req'd. See General Notes on Sheet OS-S-1.

DESIGNED -	200
CHECKED -	EXAMINED
DRAWN -	PASSED
CHECKED -	ENGINEER OF BRIDGE DESIGN
	ENGINEER OF BRIDGES AND STRUCTURES

Note: See Sheet OS-S-3 for Sections A-A, B-B and C-C.



Width, depth and thickness shall be as indicated for TS members shown in table.

OVERHEAD SIGN STRUCTURES
POST and CHORD DETAILS

FAP ROUTE 310 (IL 255)
SECTION 60-15SG
MADISON COUNTY