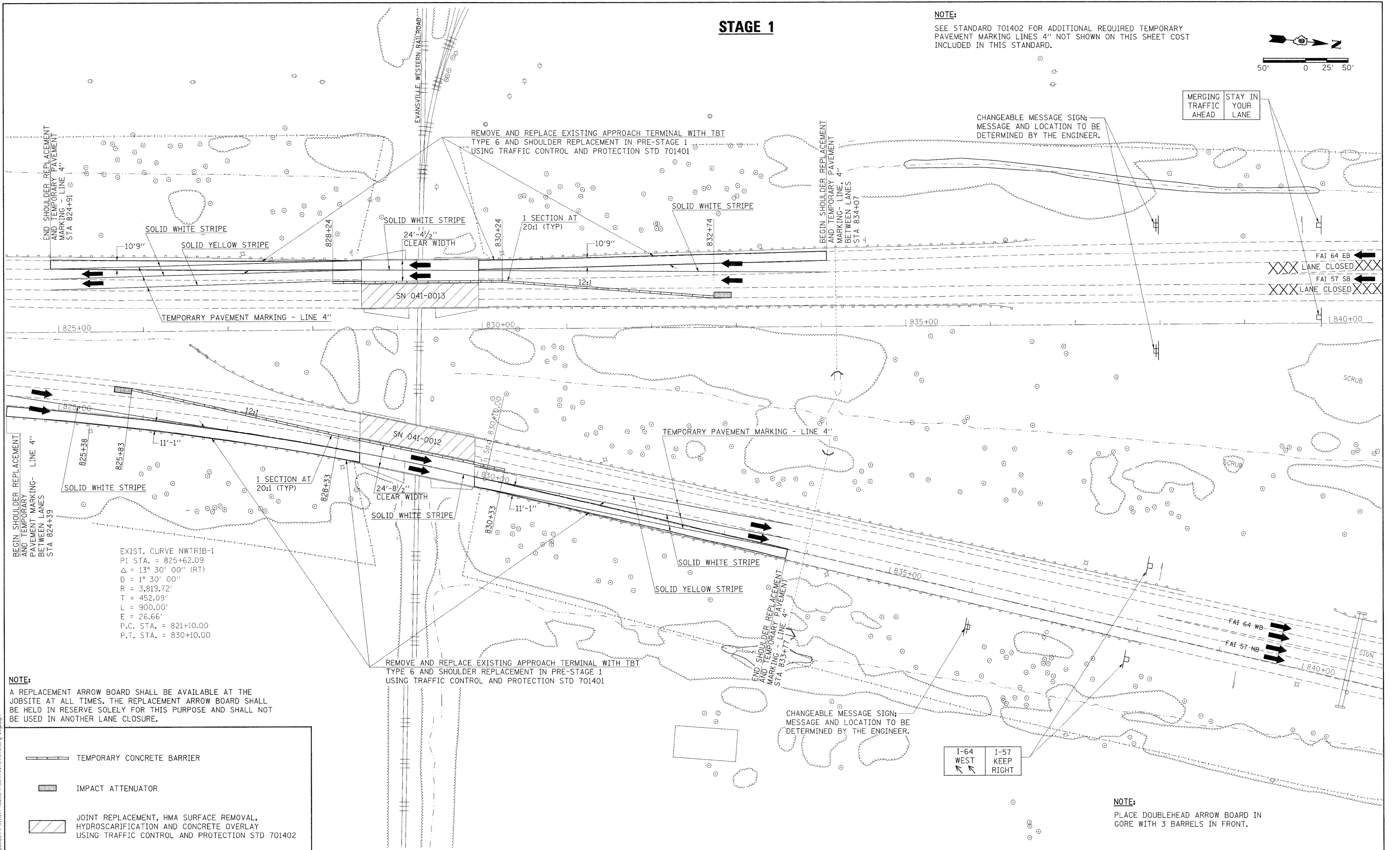
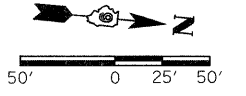


# STAGE 1

**NOTE:**  
SEE STANDARD 701402 FOR ADDITIONAL REQUIRED TEMPORARY PAVEMENT MARKING LINES 4" NOT SHOWN ON THIS SHEET COST INCLUDED IN THIS STANDARD.

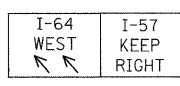


**NOTE:**  
A REPLACEMENT ARROW BOARD SHALL BE AVAILABLE AT THE JOBSITE AT ALL TIMES. THE REPLACEMENT ARROW BOARD SHALL BE HELD IN RESERVE SOLELY FOR THIS PURPOSE AND SHALL NOT BE USED IN ANOTHER LANE CLOSURE.

	TEMPORARY CONCRETE BARRIER
	IMPACT ATTENUATOR
	JOINT REPLACEMENT, HMA SURFACE REMOVAL, HYDROSCARIFICATION AND CONCRETE OVERLAY USING TRAFFIC CONTROL AND PROTECTION STD 701402

REMOVE AND REPLACE EXISTING APPROACH TERMINAL WITH TBT TYPE 6 AND SHOULDER REPLACEMENT IN PRE-STAGE 1 USING TRAFFIC CONTROL AND PROTECTION STD 701401

CHANGEABLE MESSAGE SIGN; MESSAGE AND LOCATION TO BE DETERMINED BY THE ENGINEER.



**NOTE:**  
PLACE DOUBLEHEAD ARROW BOARD IN GORE WITH 3 BARRELS IN FRONT.

FILE NAME = c:\pwwork\pawdot\collavr\01615788\78172.sh1.brg.stg.dgn

USER NAME = rollvr	DESIGNED -	REVISED -
PLOT SCALE = 50,0000' / IN.	DRAWN -	REVISED -
PLOT DATE = 2/23/2011	CHECKED -	REVISED -
	DATE -	REVISED -

**STATE OF ILLINOIS  
DEPARTMENT OF TRANSPORTATION**

**BRIDGE STAGING PLAN  
STAGE 1**

SCALE: 1"=50' SHEET NO. OF SHEETS STA. TO STA.

F.A.I. RTE.	SECTION	COUNTY	TOTAL SHEETS	SHEET NO.
57	(41-2-1,41-3,41-3-1R-1)	JEFFERSON	422	141
CONTRACT NO. 78172				
ILLINOIS FED. AID PROJECT				