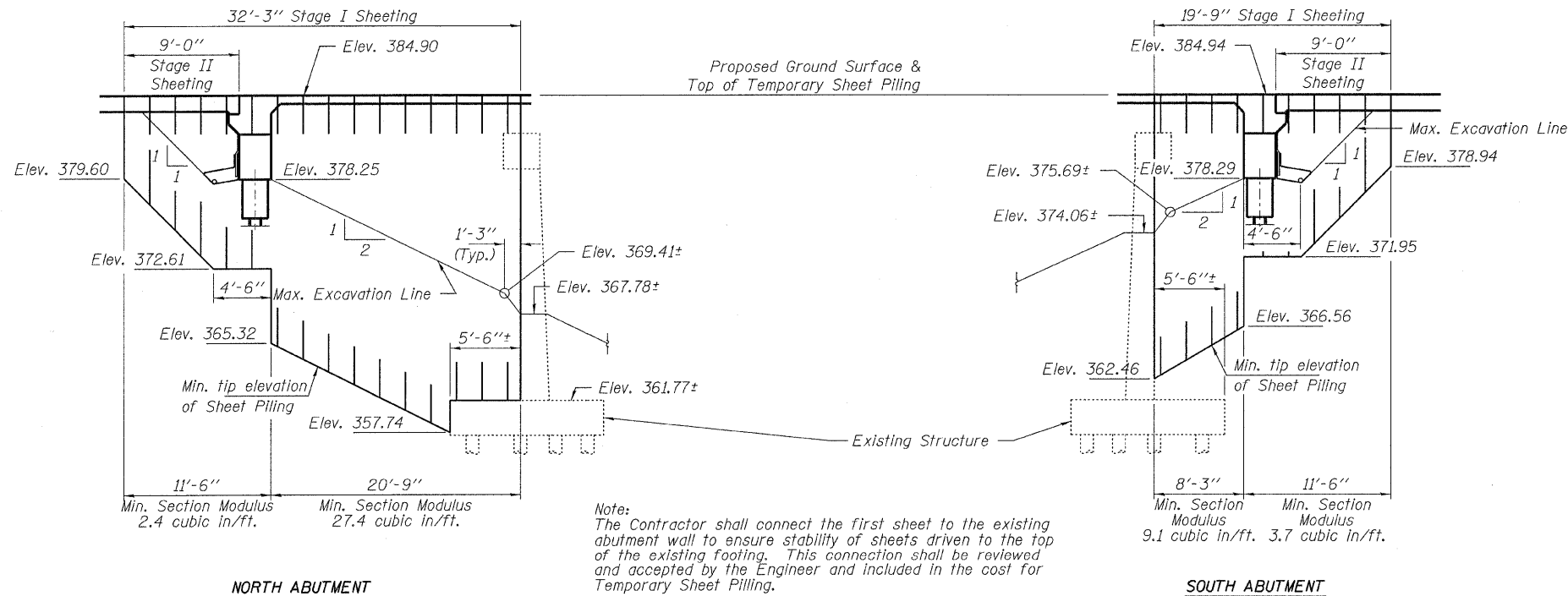


SECTION THRU INTEGRAL ABUTMENT
(Horiz. dim. @ Rt. L's)

*Included in the cost of Pipe Underdrains for Structures.

All drainage system components shall extend to 2'-0" from the end of each wingwall except an outlet pipe shall extend until intersecting with the side slopes. The pipes shall drain into concrete headwalls. (See Article 601.05 of the Standard Specifications and Highway Standard 601101)



NORTH ABUTMENT

SOUTH ABUTMENT

Note:
The Contractor shall connect the first sheet to the existing abutment wall to ensure stability of sheets driven to the top of the existing footing. This connection shall be reviewed and accepted by the Engineer and included in the cost for Temporary Sheet Piling.

If the Contractor chooses to alter the temporary cantilevered sheet piling design requirements shown on the plans, a design submittal including plan details and calculations will be required for review and acceptance by the Engineer.

TEMPORARY SHEET PILING AT ABUTMENTS

GENERAL NOTES

Fasteners shall be AASHTO M164 Type 1, mechanically galvanized bolts. Bolts 5/8" φ, holes 11/16" φ, unless otherwise noted.
Calculated weight of Structural Steel = 49,000 lbs. (Grade 50) and 4,740 lbs. (Grade 36).
No field welding is permitted except as specified in the contract documents.
Reinforcement bars shall conform to the requirements of ASTM A 706 Gr 60. See Special Provisions.
Reinforcement bars designated (E) shall be epoxy coated.
Bearing seat surfaces shall be constructed or adjusted to the designated elevations within a tolerance of 1/8 inch (0.01 ft.). Adjustment shall be made either by grinding the surface or by shimming the bearings.
The Inorganic Zinc Rich Primer / Acrylic / Acrylic Paint System shall be used for shop and field painting of new structural steel except where otherwise noted. The color of the final finish coat for all interior steel surfaces shall be gray, Munsell No. 5B 7/1. The color of the final finish coat for the exterior and bottom flange of the fascia beams shall be Interstate green, Munsell No. 7.5G 4/8. See Special Provision for "Cleaning and Painting New Metal Structures".
Layout of slope protection system may be varied to suit ground conditions in the field as directed by the Engineer.
Slip-Forming of the parapets is not allowed.

STATION 808+38.75
BUILT 201 BY
STATE OF ILLINOIS
F.A.P. RTE. 328 SEC. 105B-2
LOADING HL-93
STR. NO. 097-0075

NAME PLATE
See Std. 515001

TOTAL BILL OF MATERIAL

ITEM	UNIT	SUPER	SUB	TOTAL
Stone Riprap, Class A4	Sq. Yd.			807
Filter Fabric	Sq. Yd.			807
Removal of Existing Structures	Each			1
Structure Excavation	Cu. Yd.			250
Floor Drains	Each	8		8
Concrete Structures	Cu. Yd.		172.2	172.2
Concrete Superstructure	Cu. Yd.	255.6		255.6
Bridge Deck Grooving	Sq. Yd.	592		592
Concrete Encasement	Cu. Yd.		14.8	14.8
Protective Coat	Sq. Yd.	761	11	772
Furnishing and Erecting Structural Steel	L. Sum	1		1
Stud Shear Connectors	Each	2,232		2,232
Reinforcement Bars, Epoxy Coated	Pound	62,190	14,730	76,920
Bar Splicers	Each	646	124	770
Furnishing Steel Piles HP14x73	Foot		720	720
Furnishing Steel Piles HP14x89	Foot		1,064	1,064
Driving Piles	Foot		1,784	1,784
Test Pile Steel HP14x73	Each		2	2
Test Pile Steel HP14x89	Each		1	1
Pile Shoes	Each		28	28
Name Plates	Each		1	1
Anchor Bolts, 5/8"	Each		24	24
Anchor Bolts, 1"	Each		24	24
Geocomposite Wall Drain	Sq. Yd.			52
Porous Granular Embankment, Special	Cu. Yd.			83.5
Underwater Structure Excavation Protection - Loc. 1	Each			1
Underwater Structure Excavation Protection - Loc. 2	Each			1
Mechanical Splicers	Each		72	72
Asbestos Bearing Pad Removal	Each			22
Temporary Sheet Piling	Sq. Ft.			895
Pipe Underdrains for Structures 4"	Foot			130