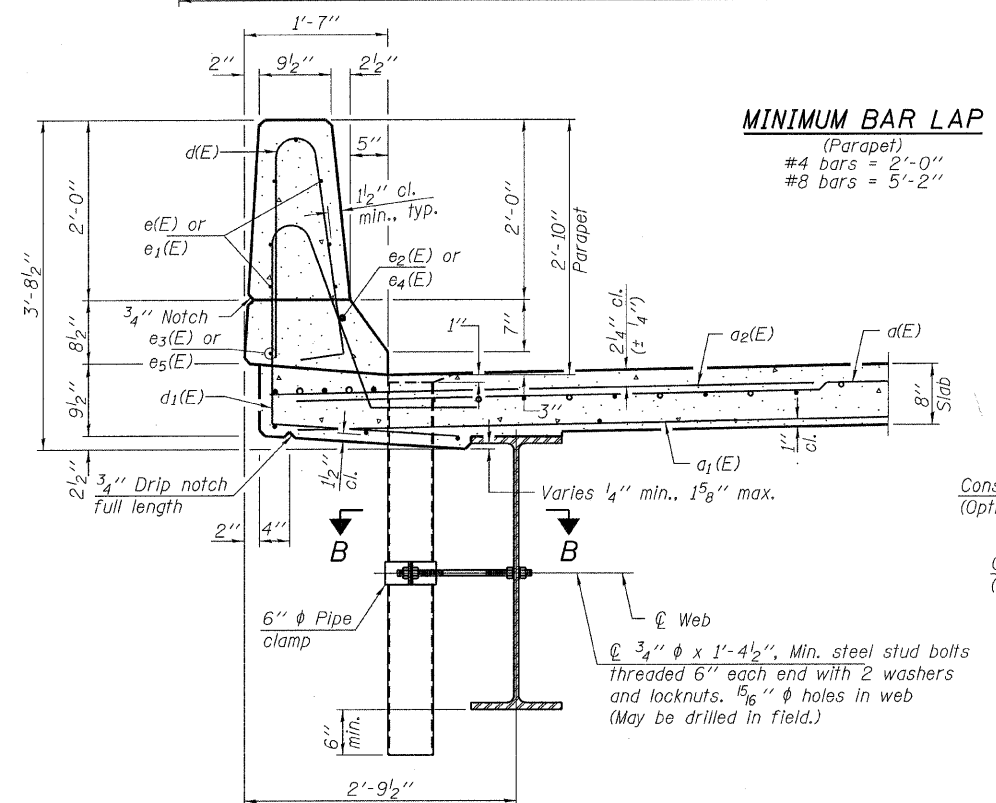
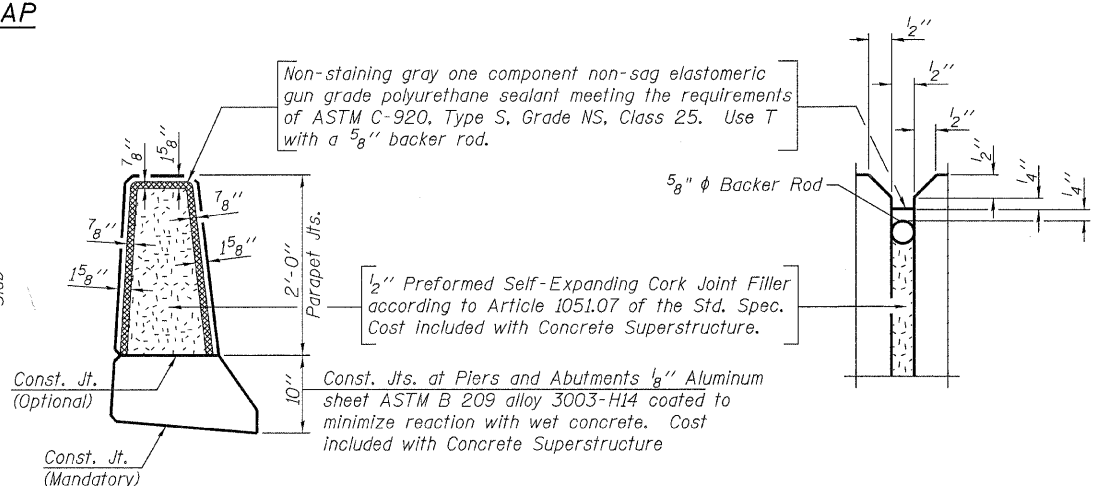


INSIDE ELEVATION OF PARAPET



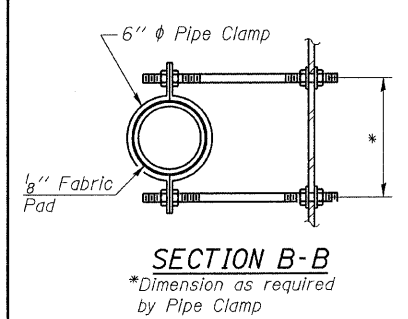
SECTION THRU PARAPET

MINIMUM BAR LAP
(Parapet)
#4 bars = 2'-0"
#8 bars = 5'-2"

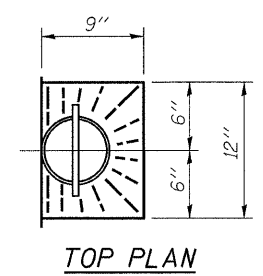


PARAPET JOINT DETAILS

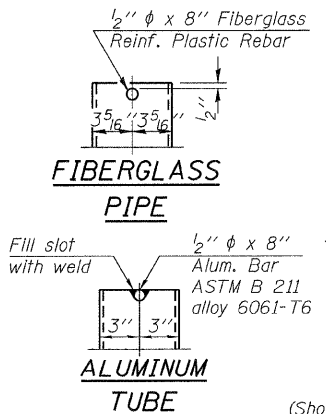
Notes:
The exterior surfaces of the floor drains shall be painted with the finish coat as specified in the special provisions for Cleaning and Painting New Metal Structures. The exterior surfaces of the drains shall be cleaned according to Society of Protective Coatings Spec. SSPC-SP1 prior to painting.
Fiberglass pipe shall conform to ASTM D 2996, with short-time rupture strength hoop tensile stress of 30,000 p.s.i. minimum.
Galvanize clamping device according to AASHTO M232. Cost of clamping device and inserts is included with Floor Drains.



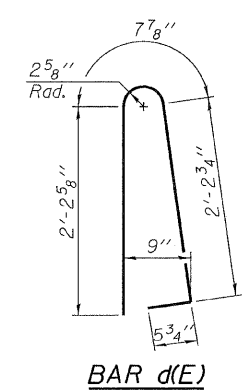
SECTION B-B
*Dimension as required by Pipe Clamp



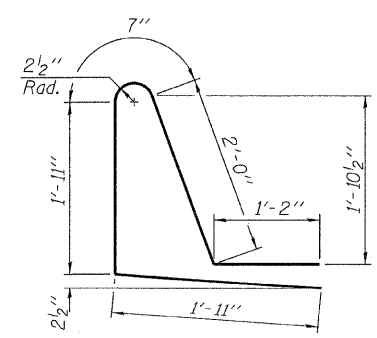
TOP PLAN



ALUMINUM TUBE TOP PLAN
(Showing Aluminum Tube)



BAR d(E)



BAR d1(E)

SUPERSTRUCTURE BILL OF MATERIAL

| BAR | NO. | SIZE | LENGTH | SHAPE |
|----------------------------------|-----|------|---------|--------|
| d(E) | 404 | #5 | 17'-2" | — |
| a1(E) | 284 | #5 | 16'-9" | — |
| a2(E) | 402 | #6 | 6'-6" | — |
| b(E) | 152 | #5 | 31'-3" | — |
| b1(E) | 160 | #5 | 25'-6" | — |
| b2(E) | 68 | #6 | 21'-6" | — |
| d(E) | 258 | #5 | 5'-7" | ⏏ |
| d1(E) | 258 | #5 | 7'-7" | ⏏ |
| e(E) | 56 | #4 | 18'-0" | — |
| e1(E) | 42 | #4 | 14'-3" | — |
| e2(E) | 4 | #8 | 36'-4" | — |
| e3(E) | 4 | #4 | 36'-4" | — |
| e4(E) | 4 | #8 | 26'-0" | — |
| e5(E) | 4 | #4 | 22'-10" | — |
| m(E) | 20 | #6 | 17'-3" | — |
| m1(E) | 24 | #6 | 9'-3" | — |
| m2(E) | 8 | #6 | 5'-6" | — |
| m3(E) | 8 | #6 | 2'-6" | — |
| s(E) | 72 | #5 | 5'-5" | ⏏ |
| s1(E) | 64 | #4 | 8'-0" | ⏏ |
| v(E) | 64 | #5 | 3'-9" | ⏏ |
| Concrete Superstructures | | | Cu. Yd. | 149.6 |
| Reinforcement Bars, Epoxy Coated | | | Pound | 34,910 |
| Bar Splicers | | | Each | 424 |

Bars Indicated thus 1x2-#8 etc. Indicates 1 line of bars with 2 lengths per line.

| | | | |
|--|----------------------|-------------------|--------------------|
| FILE NAME = 090116-shr-bridge.dgn | USER NAME = | DESIGNED - S.M.S. | REVISED - 10/14/10 |
| HAMPTON, LENZINI AND RENWICK, INC. 3095 STEVENSON DRIVE, SUITE 201 SPRINGFIELD, ILLINOIS 62709 ILLINOIS PROFESSIONAL DESIGN FIRM L3 / PE / SE CORP. 184.000599 | PLOT SCALE = | CHECKED - A.S.L. | REVISED - 12/10/10 |
| | PLOT DATE = 1/5/2011 | DRAWN - D.A.B. | REVISED - |
| | | CHECKED - M.D.C. | REVISED - |

**STATE OF ILLINOIS
DEPARTMENT OF TRANSPORTATION**

**SUPERSTRUCTURE DETAILS
STRUCTURE NO. 097-0075**

SHEET NO. 11 OF 24 SHEETS

| | | | | |
|--------------------|---------|--------|---------------------------|-----------|
| FAP | SECTION | COUNTY | TOTAL SHEETS | SHEET NO. |
| 328 | 105B-2 | WHITE | 55 | 32 |
| CONTRACT NO. 78188 | | | ILLINOIS FED. AID PROJECT | |