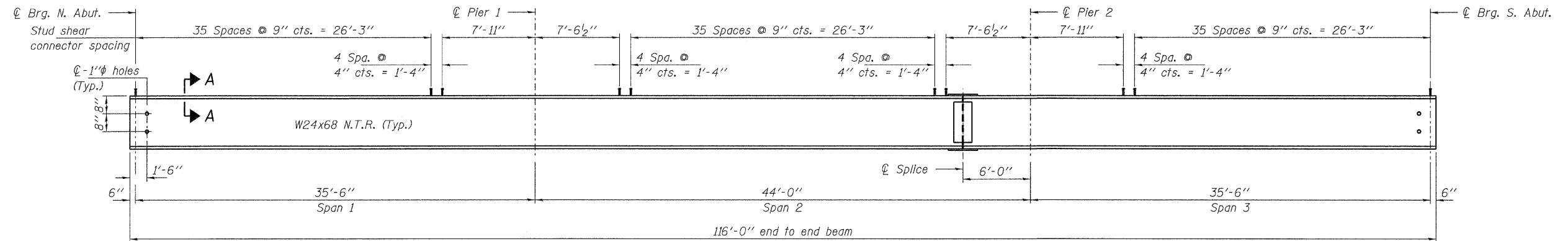
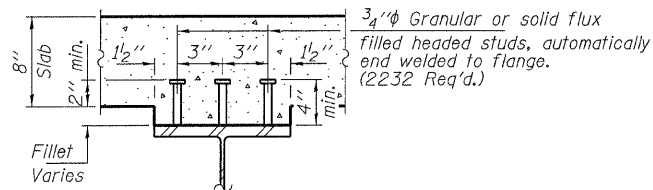


PLAN



ELEVATION



SECTION A-A

Location	☉ Brg. N. Abut.	☉ Brg. Pier 1	☉ Splice 1	☉ Brg. Pier 2	☉ Brg. S. Abut.
BEAM 1	383.91	383.92	383.93	383.93	383.95
BEAM 2	384.01	384.03	384.04	384.04	384.05
BEAM 3	384.11	384.12	384.13	384.13	384.15
BEAM 4	384.11	384.12	384.13	384.13	384.15
BEAM 5	384.01	384.03	384.04	384.04	384.05
BEAM 6	383.91	383.92	383.93	383.93	383.95

TOP OF BEAM ELEVATIONS

(For fabrication only)
(Does not include Dead Load Deflections)

Notes:
Load carrying components designated "NTR" shall conform to the Supplemental Requirements for Notch Toughness, Zone 2.
All beams and splices shall be M270 Grade 50.
All cross frames or diaphragms shall be installed as steel is erected and secured with erection pins and bolts except as otherwise noted. Individual cross frames or diaphragms at supports may be temporarily disconnected to install bearing anchor rods.
For Structural Steel details see sheet 16 of 24.