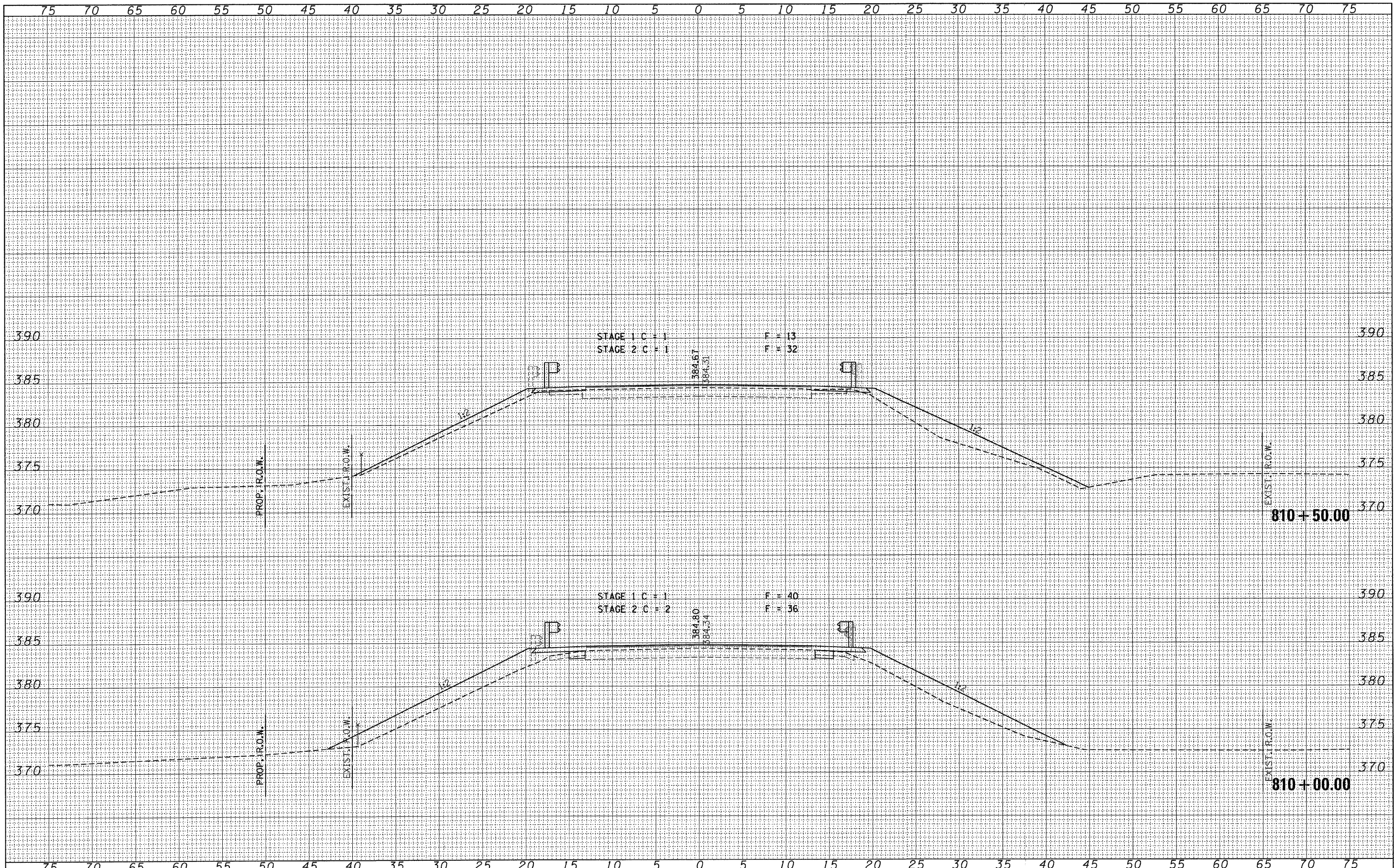


FINAL SURVEY	SURVEYED	BY	DATE
NOTE BOOK NO.	PLOTTED		
	TEMPLATE		
	AREAS CHECKED		

ORIGINAL SURVEY	SURVEYED	BY	DATE
NOTE BOOK NO.	PLOTTED		
	TEMPLATE		
	AREAS CHECKED		



FILE NAME = 070116-eh-t-xe.dgn	USER NAME =	DESIGNED - L.F.S.	REVISED -	<b>STATE OF ILLINOIS DEPARTMENT OF TRANSPORTATION</b>	<b>CROSS SECTIONS U.S. ROUTE 45</b>			F.A.P.	SECTION	COUNTY	TOTAL SHEETS	SHEET NO.	
<b>HAMPTON, LENZINI AND RENWICK, INC.</b> 3888 STEVENSON DRIVE, SUITE 201 SPRINGFIELD, ILLINOIS 62703	FLAT SCALE =	DRAWN - T.W.K.	REVISED -		328	105B-2	WHITE	55	53				
<b>HLR</b> ILLINOIS PROFESSIONAL DESIGN FIRM L3 / PE / SE CORP. 184.000659	PLAT DATE = 1/5/2011	CHECKED - S.W.M.	REVISED -		SCALE: 5H:5V			SHEET NO. OF SHEETS			STA. 810+00.00 TO STA. 810+50.00	FED. ROAD DIST. NO.	ILLINOIS FED. AID PROJECT
		DATE - 11/08/10	REVISED -								CONTRACT NO. 78188		