

STATE OF ILLINOIS
 DEPARTMENT OF TRANSPORTATION
 DIVISION OF HIGHWAYS

**PROPOSED
 HIGHWAY PLANS**

FAP ROUTE 331 (IL13)
 SECTION D9 PAVT PRESERVATION 2011-1

**MICROSURFACING
 SALINE & WILLIAMSON COUNTIES**

C-99-077-10

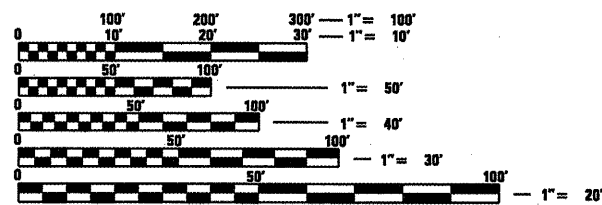
F.A.P. RTE.	SECTION	COUNTY	TOTAL SHEETS	SHEET NO.
331	D9 Pavt Preserv. 2011-1	ILLINOIS	21	1
			CONTRACT NO. 78218	
•Saline/Williamson Counties				

FOR INDEX OF SHEETS, SEE SHEET NO. 3

ADT (2009) 9100
 PV = 8475
 MU = 375
 SU = 250
 TRUCK = 6.8%

Townships: Brushy and
 Crab Orchard

EO. STA. 724+21.21 (BK.) =
 STA. 725+01.02 (AH.)

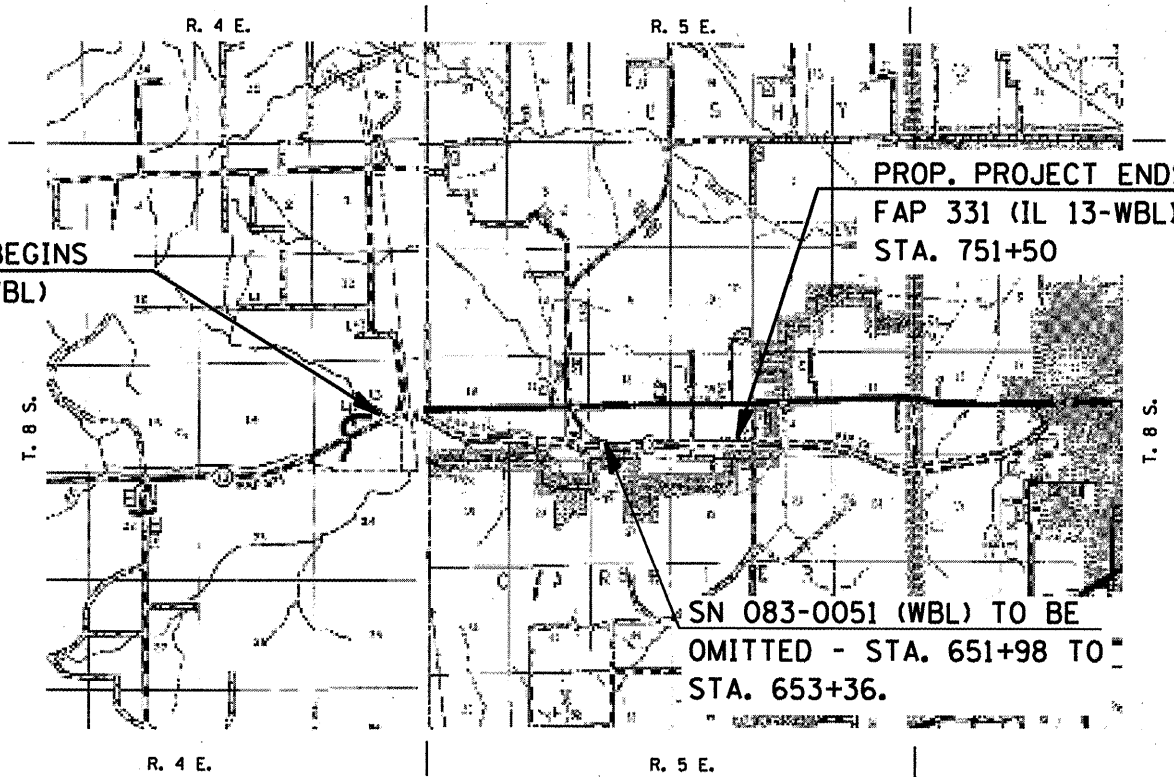


FULL SIZE PLANS HAVE BEEN PREPARED USING STANDARD
 ENGINEERING SCALES. REDUCED SIZED PLANS WILL NOT
 CONFORM TO STANDARD SCALES. IN MAKING MEASUREMENTS
 ON REDUCED PLANS, THE ABOVE SCALES MAY BE USED.

J.U.L.I.E.
 JOINT UTILITY LOCATION INFORMATION FOR EXCAVATION
 1-800-892-0123
 OR 811

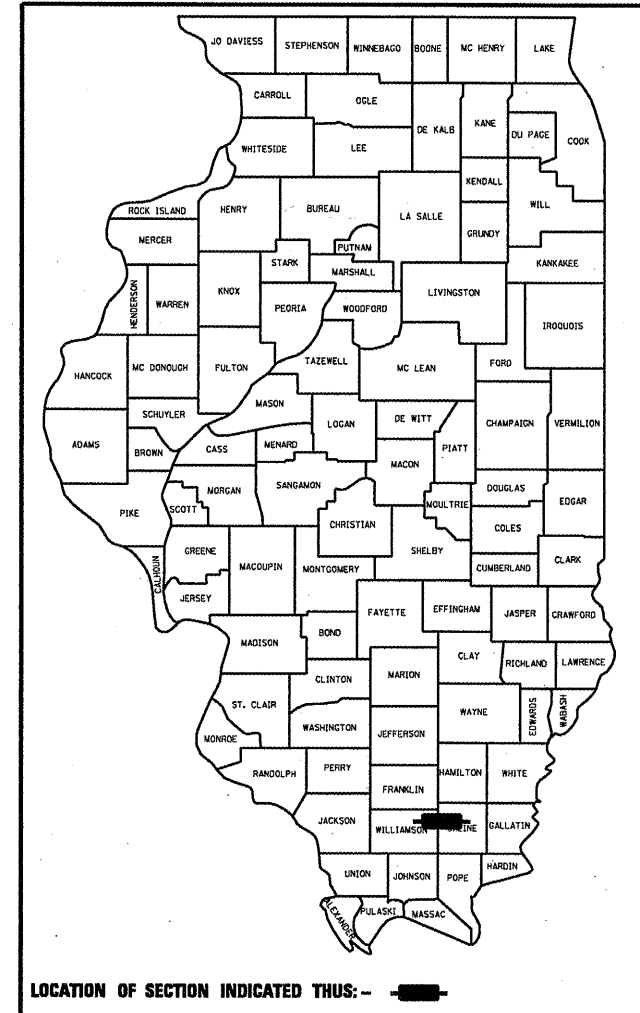
PROJECT ENGINEER CHARLES STEIN (618) 351-5210
 PROJECT MANAGER KATHI MCCORD (618) 351-5319

CONTRACT NO. 78218



GROSS LENGTH = 23706.19 FT. = 4.49 MILE
 NET LENGTH = 23568.19 FT. = 4.46 MILE

D-99-074-10



LOCATION OF SECTION INDICATED THUS: - [thick black line] -

STATE OF ILLINOIS
 DEPARTMENT OF TRANSPORTATION
 DIVISION OF HIGHWAYS

SUBMITTED Feb 1 20 11

Mary C. Jamie
 DEPUTY DIRECTOR OF HIGHWAYS, REGION ENGINEER

March 05 20 11
Scott E. Stitt P.E.
 acting ENGINEER OF DESIGN AND ENVIRONMENT

March 05 20 11
Christine M. Leader
 DIRECTOR OF HIGHWAYS, CHIEF ENGINEER

**PRINTED BY THE AUTHORITY
 OF THE STATE OF ILLINOIS**

Prepared By: *Joe Manfrevia*
DISTRICT STUDIES & PLANS ENGINEER

Examined By: *James Lewis Emery*
DISTRICT LAND ACQUISITION ENGINEER

Examined By: *Carrie Nelson*
DISTRICT PROGRAM DEVELOPMENT ENGINEER

Examined By: *Vict Uily*
DISTRICT OPERATIONS ENGINEER

Examined By: *Ke Ritz*
DISTRICT CONSTRUCTION ENGINEER

Examined By: *Bruce Peebles wgs*
DISTRICT MATERIALS ENGINEER

Examined By: *KE*
DISTRICT PROJECT IMPLEMENTATION ENGINEER

~~Examined By:~~
~~ASSISTANT REGIONAL ENGINEER~~

Approved By: *Mary C-Lamie*
DEPUTY DIRECTOR OF HIGHWAYS, REGION ENGINEER

Feb 2 20*11*
DATE

FILE NAME =	USER NAME = mcoordkr	DESIGNED -	REVISED -
at\p_w\work\pwidot\mcoordkr\d0209826\7828	8-sht-plan.dgn	DRAWN -	REVISED -
	PLOT SCALE = 100.0000 / IN.	CHECKED -	REVISED -
	PLOT DATE = 1/14/2011	DATE -	REVISED -

**STATE OF ILLINOIS
DEPARTMENT OF TRANSPORTATION**

-----**SIGNATURE BLOCK**-----
SCALE: _____ SHEET NO. ____ OF ____ SHEETS STA. _____ TO STA. _____

F.A.P. RTE.	SECTION	COUNTY	TOTAL SHEETS	SHEET NO.
331	09-P&VI-PBES-EX11-1		21	2
CONTRACT NO. 78218				
ILLINOIS FED. AID PROJECT				

*WILLIAMSON/SALINE COUNTIES

INDEX OF SHEETS

SHEET NO.	DESCRIPTION
1	COVER SHEET
2	SIGNATURE BLOCK
3	INDEX OF SHEETS; HIGHWAY STANDARDS; STRUCTURE RATINGS; GENERAL NOTES
4 - 5	TYPICAL SECTIONS
6	SUMMARY OF QUANTITIES
7	RESURFACING SCHEDULE
8	THERMOPLASTIC PAVEMENT MARKING SCHEDULE
9	LOCATION MAP - FAP 331 (IL. 13) EASTBOUND LANES NEAR WILLIAMSON/SALINE COUNTY LINE
10 - 17	PLAN SHEETS
18 - 21	PAVEMENT MARKING DETAIL SHEETS

HIGHWAY STANDARDS

701421-03
 701426-04
 701901-01
 780001-02
 781001-03

GENERAL NOTES

THE AGGREGATE TO BE USED IN THE MICRO-SURFACING SHALL BE TYPE II APPLIED AT 16 LB/SQ YD PER PASS.

BITUMINOUS MATERIAL (PRIME COAT) SHALL BE APPLIED PRIOR TO PLACING THE FIRST PASS OF MICRO-SURFACING AT A RATE OF 0.05 - 0.10 GAL/SQ. YD.

THE QUANTITY OF SHORT TERM PAVEMENT MARKING SHOWN IN THE PLANS WAS BASED ON ONE APPLICATION EACH FOR 1 LAYER OF THE PRIME COAT AND 1 LAYER OF SURFACE TREATMENT.

PRIOR TO PLACEMENT OF THE FINAL PAVEMENT MARKINGS THE RESIDENT ENGINEER SHOULD CONTACT THE BUREAU OF OPERATIONS AND ARRANGE FOR INSPECTION AND APPROVAL OF THE PAVEMENT MARKING LAYOUT.

THE CONTRACTOR SHALL PRESERVE EXISTING STAMPED STATIONING.

THE CONTRACTOR SHOULD FOLLOW THE EXISTING HOT-MIX LAYOUT AS CLOSELY AS POSSIBLE. EACH INDIVIDUAL LANE SHOULD BE DONE EDGE TO EDGE IN ONE PASS. SHOULDERS SHALL BE DONE SEPARATELY.

THE FRICTION AGGREGATE SHALL BE MIXTURE D.

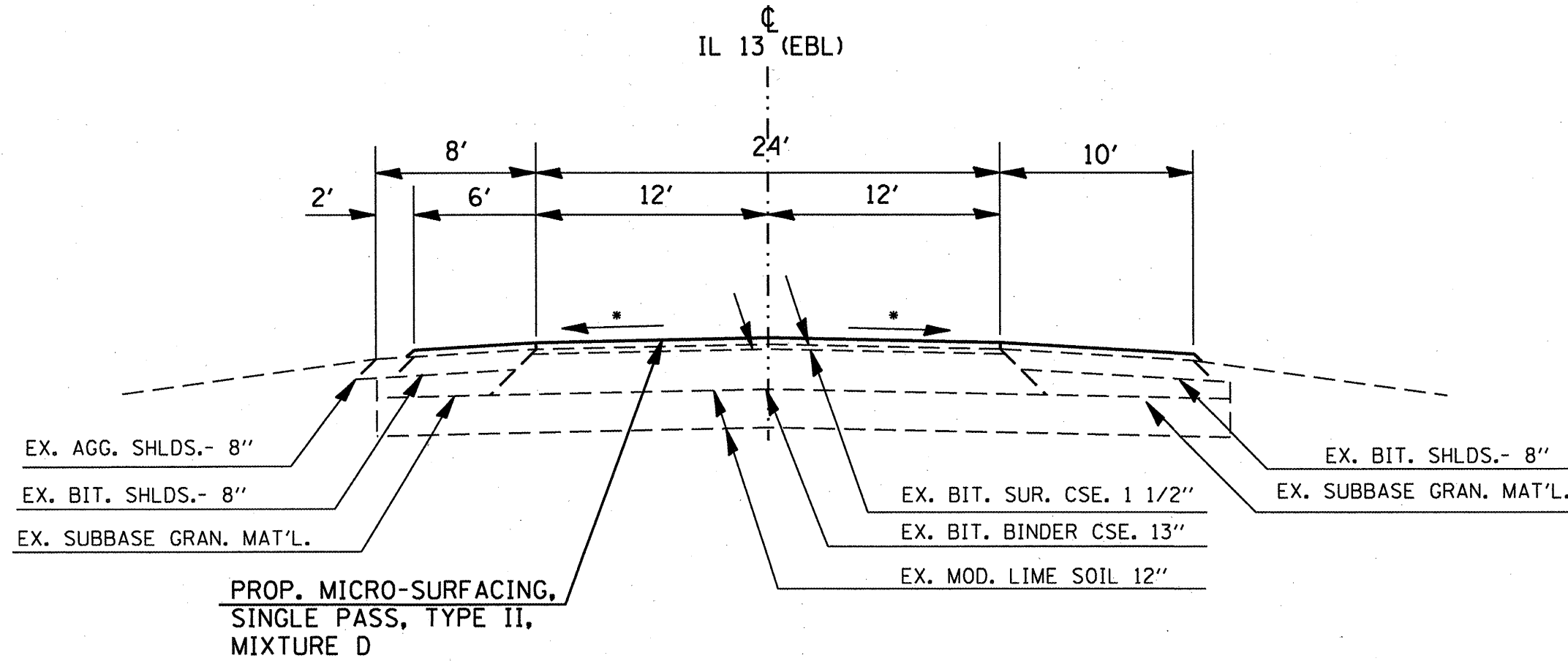
STRUCTURE RATINGS

STRUCTURE NO.	INV. RATING	OPER. RATING	SUFF. RATING
FAI 331 (IL. 13) WESTBOUND LANES - WILLIAMSON COUNTY			
100-2011	20.0	27.2	78.3
FAI 331 (IL. 13) WESTBOUND LANES - SALINE COUNTY			
083-2011	37.6	55.0	84.5
083-0051	24.0	40.2	99.8
083-7036	NA	NA	84.5
083-7037	NA	NA	83.4
083-7038	NA	NA	85.0
083-7039	NA	NA	81.0
083-7040	NA	NA	83.4

•WILLIAMSON/SALINE COUNTIES

FILE NAME *	USER NAME * mcoordkr	DESIGNED - ---	REVISED - ---	STATE OF ILLINOIS DEPARTMENT OF TRANSPORTATION	INDEX OF SHEETS, GENERAL NOTES AND STRUCTURE INFORMATION	F.A.P. RTE.	SECTION	COUNTY	TOTAL SHEETS	SHEET NO.	
o:\pwork\pwork\mcoordkr\0209026\7818-shr-plan.dgn		DRAWN - ---	REVISED - ---			331	09_PAVI_PRES_EX11-1		21	3	
PLOT SCALE = 100.0000' / IN.		CHECKED - ---	REVISED - ---			CONTRACT NO. 70219					
PLOT DATE = 1/24/2011		DATE - ---	REVISED - ---			ILLINOIS FED. AID PROJECT					

TYPICAL SECTION



TO BE USED:
 STA. 513+64 TO STA. 651+98
 OMIT SN 083-0051 - STA. 651+98 TO STA. 653+36
 STA. 653+36 TO STA. 724+21.21
 STA. 725+01.02 TO STA. 751+50

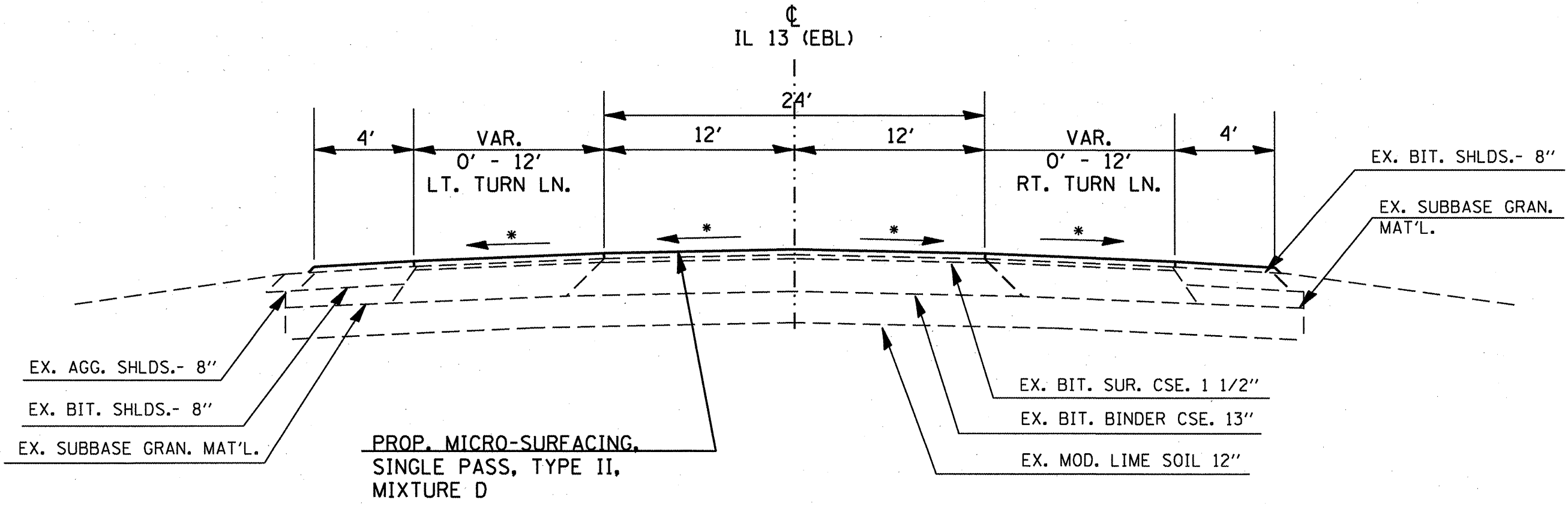
•MATCH EXISTING SLOPE.

EQ. STA. 724+21.21 (BK) = STA. 725+01.02 (AH)

•WILLIAMSON/SALINE COUNTIES

FILE NAME =	USER NAME = mcoordkr	DESIGNED -	REVISED -	STATE OF ILLINOIS DEPARTMENT OF TRANSPORTATION	TYPICAL SECTION MAINLINE AND SHOULDERS	F.A.P. RTE: 331	SECTION 09_PAVT_PRES_EX11:1	COUNTY	TOTAL SHEETS 21	SHEET NO. 4
at:\pw\work\pwidot\mcoordkr\0820982678818-shs-plan.dgn		DRAWN -	REVISED -		SCALE: _____	CONTRACT NO. 78218		ILLINOIS FED. AID PROJECT		
	PLOT SCALE = 100.0000' / IN.	CHECKED -	REVISED -		SHEET NO. _____ OF _____ SHEETS	STA. _____ TO STA. _____				
	PLOT DATE = 2/3/2011	DATE -	REVISED -							

TYPICAL SECTION THRU LEFT AND RIGHT TURNS



TO BE USED:

- LT. STA. 522+51 TO STA. 528+81 (NIXVILLE RD.)
- LT. STA. 545+46 TO STA. 552+51 (FAITH CHAPEL RD.)
- LT. STA. 637+80 TO STA. 646+57 (S. HARCO RD.)
- RT. STA. 711+88 TO STA. 718+40 (HANKINS RD)

*MATCH EXISTING SLOPE.

*WILLIAMSON/SALINE COUNTIES

FILE NAME =	USER NAME = mcoardkr	DESIGNED -	REVISED -	STATE OF ILLINOIS DEPARTMENT OF TRANSPORTATION	TYPICAL SECTION LEFT AND RIGHT TURN LANES	F.A.P. RTE. 331	SECTION 09.PAVT.PRES.EYII-1	COUNTY	TOTAL SHEETS 21	SHEET NO. 5
as\pwork\poidot\mcoardkr\0209826\7818-shr-plen.dgn		DRAWN -	REVISED -							
PLOT SCALE = 100.0000' / IN.		CHECKED -	REVISED -							
PLOT DATE = 2/3/2011		DATE -	REVISED -							
						SCALE: SHEET NO. OF SHEETS STA. TO STA.		CONTRACT NO. 78218 ILLINOIS FED. AID PROJECT		

SUMMARY OF QUANTITIES				FAP 331 (IL 13) WESTBOUND LANES	
				RURAL	RURAL
CODE NUMBER	ITEM DESCRIPTION	UNIT	TOTAL QUANTITY	100% STATE	100% STATE
				MICROSURFACING WILLIAMSON	MICROSURFACING SALINE
				0005 QUANTITY	0005 QUANTITY
X0326218	FIBER-MODIFIED ASPHALT CRACK SEALING	FOOT	98613	10957	87656
Z0063804	MICRO-SURFACING, SINGLE PASS, TYPE II, MIXTURE D	SO YD	107874	11842	96032
40600100	BITUMINOUS MATERIALS (PRIME COAT)	GALLON	9709.0	1065.8	8643.2
67100100	MOBILIZATION	L SUM	1	0.4	0.6
70100310	TRAFFIC CONTROL AND PROTECTION, STANDARD 701421	L SUM	1	0.4	0.6
70300100	SHORT TERM PAVEMENT MARKING	FOOT	8233	879	7354
70300210	TEMPORARY PAVEMENT MARKING LETTERS AND SYMBOLS	SQ FT	291.2	36.4	254.8
70300220	TEMPORARY PAVEMENT MARKING-LINE 4"	FOOT	47590	5036	42554
70300240	TEMPORARY PAVEMENT MARKING-LINE 6"	FOOT	6112	635	5477
70301000	WORK ZONE PAVEMENT MARKING REMOVAL	SQ FT	3732	399	3333
* 78000100	THERMOPLASTIC PAVEMENT MARKING-LETTERS AND SYMBOLS	SQ FT	291.2	36.4	254.8
* 78000200	THERMOPLASTIC PAVEMENT MARKING - LINE 4"	FOOT	47590	5036	42554
* 78000400	THERMOPLASTIC PAVEMENT MARKING - LINE 6"	FOOT	6112	635	5477
* 78100100	RAISED REFLECTIVE PAVEMENT MARKER	EACH	343	39	304
78300100	PAVEMENT MARKING REMOVAL	SQ FT	15705	1662	14043
78300200	RAISED REFLECTIVE PAVEMENT MARKER REMOVAL	EACH	331	29	302
	* SPECIALTY ITEM				

•WILLIAMSON/SALINE COUNTIES

FILE NAME =
c:\p\work\p\dot\mccordkr\d0209826\7818-shr-plan.dgn

USER NAME = mccordkr
PLOT SCALE = 100.0000 / IN.
PLOT DATE = 2/3/2011

DESIGNED -	---	REVISED -	-----
DRAWN -	---	REVISED -	-----
CHECKED -	---	REVISED -	-----
DATE -	-----	REVISED -	-----

STATE OF ILLINOIS
DEPARTMENT OF TRANSPORTATION

----- SUMMARY OF QUANTITIES -----

SCALE: _____ SHEET NO. ____ OF ____ SHEETS STA. _____ TO STA. _____

F.A.P. RTE.	SECTION	COUNTY	TOTAL SHEETS	SHEET NO.
331	09_PAVT_EBES_EY11-1		21	6
CONTRACT NO. 79218			ILLINOIS FED. AID PROJECT	

RESURFACING SCHEDULE WESTBOUND FAP 331

LOCATION - STATION TO STATION				LENGTH	PAVEMENT WIDTH	PAVEMENT AREA	SHOULDER WIDTH		MICRO-SURF., SINGLE PASS, TY. 2, MIX. D SHOULDER AREA		MICRO-SURF., SINGLE PASS, TY. 2, MIX. D PAVEMENT AREA	BIT. MATLS. (PR. CT.) (SEE NOTE 2)	FIBER-MOD. ASPHALT CR. SEAL (SEE NOTE 1)	NOTES
				FOR INFORMATIONAL PURPOSE ONLY			LEFT	RIGHT	LEFT	RIGHT				
				(FT)	(FT)	(SQ YD)	(FT)	(FT)	(SQ YD)	(SQ YD)				
FAP 331 (IL 13) Williamson Co. Westbound Lanes														
	513+64	TO	539+03	2539	24.0	6771					6771	609.4	5,078	Mainline
LT	513+64	TO	522+98	934			10.0		1038			93.4	934	Lt Shld
LT	522+51	TO	524+55	204	12.0	272				272		24.5	204	Nixville Rd.
LT	524+55	TO	526+56	201	12.0	268	4.0		89		268	32.2	402	RTL & Shoulder
LT	526+56	TO	528+81	225	6.0	150	7.0		175		150	29.3	450	RTL & Shoulder
LT	528+81	TO	539+03	1022			10.0		1136			102.2	1,022	Lt Shld
RT	522+64	TO	524+71	207	25.0	308				308		27.7	414	Median Xover
RT	513+64	TO	523+18	954				6.0		636		57.2	954	Rt Shld
RT	524+04	TO	539+03	1499				6.0		999		89.9	1,499	Rt Shld
									2438	1635	7769			
SUB-TOTALS WILLIAMSON CO. WBL									11,842		1065.8	10,957		
FAP 331 (IL 13) Saline Co. Westbound Lanes														
	539+03	TO	651+98	11295	24.0	30,120					30120	2710.8	22,590	Mainline
Lt	539+03	TO	545+97	694			10.0		771			69.4	694	Lt Shld
LT	545+46	TO	548+11	265	12.0	261				261		23.5	265	Falth Chapel Rd.
LT	548+11	TO	550+19	208	12.0	277	4.0		92		277	33.3	416	RTL & Shoulder
LT	550+19	TO	552+51	232	6.0	155	7.0		180		155	30.2	464	RTL & Shoulder
LT	552+51	TO	638+35	8584			10.0		9538			858.4	8,584	Lt Shld
RT	539+03	TO	546+57	754				6.0		503		45.2	754	Rt Shld
RT	546+11	TO	547+99	188	25.0	271				271		24.4	376	Median Xover
Rt	547+38	TO	638+87	9149				6.0		6099		548.9	9,149	Rt Shld
LT	637+79	TO	640+40	261	12.0	268				268		24.1	261	S. Harco Rd.
LT	640+40	TO	643+56	316	12.0	421	4.0		140		421	50.6	632	RTL & Shoulder
LT	643+56	TO	646+56	300	6.0	200	7.0		233		200	39.0	600	RTL & Shoulder
LT	646+56	TO	651+98	542			10.0		602			54.2	542	Lt Shld
RT	638+40	TO	640+20	180	25.0	352				352		31.7	360	Median Xover
RT	639+72	TO	643+35	363				4.0		161		14.5	363	Rt Shld
RT	640+20	TO	643+35	315	12.0	420				420		37.8	315	LTL
RT	643+35	TO	646+35	300	6.0	200	6.0		200	200		36.0	600	LTL & Shoulder
RT	646+35	TO	651+98	563			6.0		375			33.8	563	Rt Shld
S.N. 083-0051									OMIT STA. 651+98 TO STA. 653+36					
	653+36	TO	724+21	7085	24.0	18,894					18894	1700.5	14,170	Mainline
LT	653+36	TO	712+38	5902			10.0		6558			590.2	5,902	Lt Shld
LT	711+88	TO	714+05	217	12.0	243				243		21.9	217	Hankins Rd.
LT	714+05	TO	716+10	205	12.0	273	4.0		91		273	32.8	410	RTL & Shoulder
LT	716+10	TO	718+39	229	6.0	153	7.0		178		153	29.8	458	RTL & Shoulder
LT	718+39	TO	724+21	582			10		647			58.2	582	Lt Shld
RT	653+36	TO	712+66	5930				6.0		3953		355.8	5,930	Rt Shld
RT	712+19	TO	713+99	180	25.0	347				347		31.3	360	Median Xover
RT	713+53	TO	716+04	251				4.0		112		10.0	251	Rt Shld
RT	713+99	TO	716+04	205	12.0	273				273		24.6	205	LTL
RT	716+04	TO	718+34	230	6.0	153	6.0		153	153		27.6	460	LTL & Shoulder
RT	718+34	TO	724+21	587			6.0		391			35.2	587	Rt Shld
EO. STA. 724+21.21 (BK.) = STA. 725+01.02														
	725+01.02	TO	751+50	2649	24	7064					7064	635.8	5298	Mainline
LT	725+01	TO	751+50	2649			10.0		2943			264.9	2,649	Lt Shld
RT	725+01	TO	751+50	2649				6.0		1766		158.9	2,649	Rt Shld
									21,973	13,713	60,346			
SUB-TOTALS SALINE CO. WBL									96,032		8,643.2	87,656		
TOTALS WESTBOUND LANES									107,874		9,709	98,613		

Note 1: Fiber-Modified Asphalt Crack Seal is calculated using 1 lb. of material per 2.8 lined foot. Use 1 strip each for each lane, shoulder and turn lane on IL 13 through the length of the project, unless otherwise noted on plans.

Note 2: Bituminous Materials (Prime Coat) quantity includes shoulder and pavement areas.

*WILLIAMSON/SALINE COUNTIES

FILE NAME =	USER NAME = mcoardkr	DESIGNED -	REVISED -	STATE OF ILLINOIS DEPARTMENT OF TRANSPORTATION	RESURFACING SCHEDULE			F.A.P. RTE. 331	SECTION 09_PAVT_PRES_EY11-1	COUNTY	TOTAL SHEETS 21	SHEET NO. 7
at\pwork\pwork\mcoardkr\d8209826\7818-sht-plan.dgn	PLOT SCALE = 100.0000' / IN.	DRAWN -	REVISED -		SCALE: _____ SHEET NO. ____ OF ____ SHEETS STA. _____ TO STA. _____			CONTRACT NO. 78218				
	PLOT DATE = 2/3/2011	CHECKED -	REVISED -		ILLINOIS FED. AID PROJECT							
		DATE -	REVISED -									

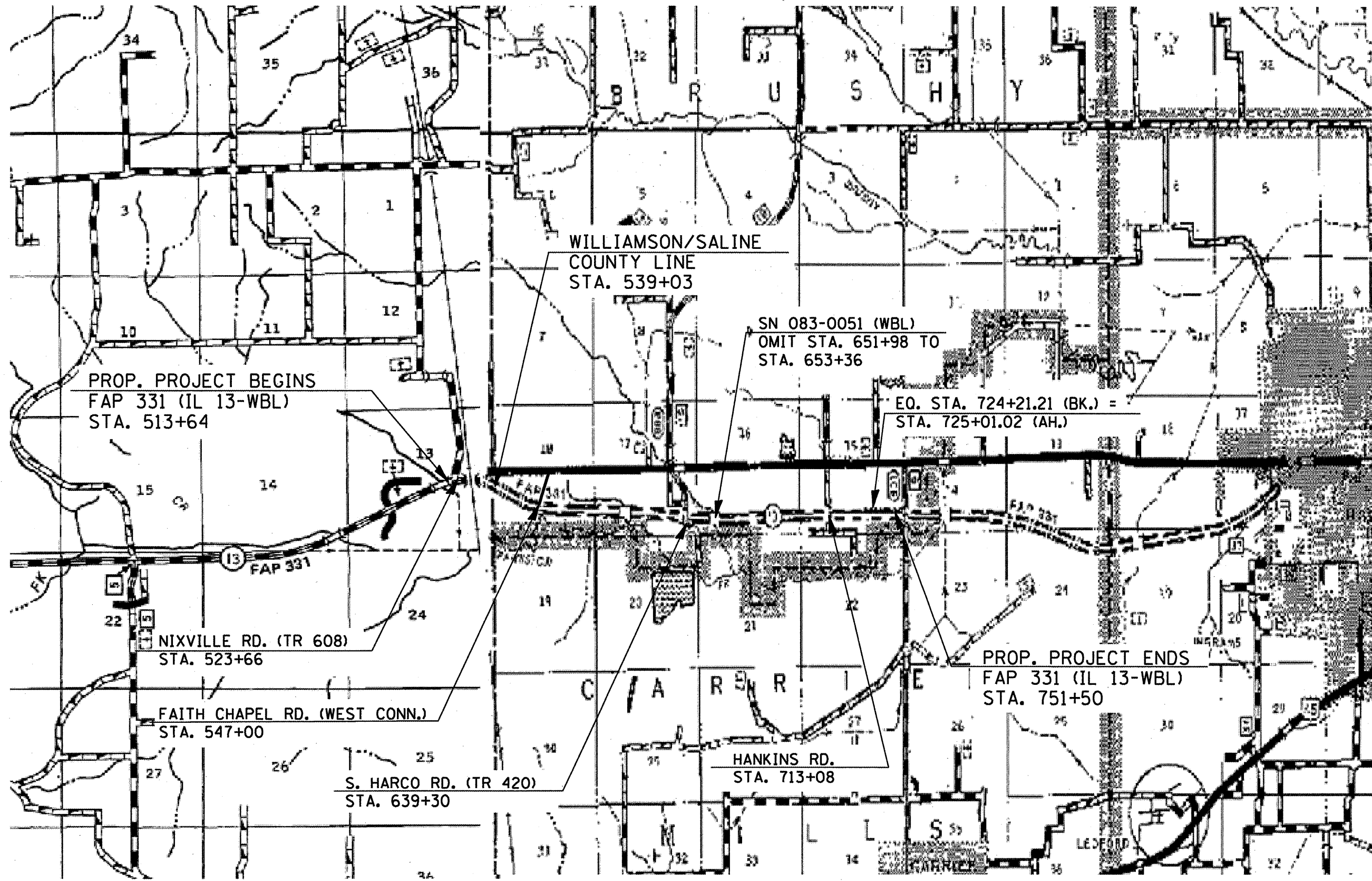
PAVEMENT MARKING SCHEDULE EASTBOUND LANES

STATION TO STATION				THPL PAVEMENT MARKING				TEMPORARY			SHORT TERM PVT MARKING	NOTES
				4 INCH WHITE	4 INCH YELLOW	6 INCH SKIP-DASH YELLOW	LETTERS & SYMBOLS	4 INCH	6 INCH	LETTERS & SYMBOLS		
				FOOT	FOOT	FOOT	SO FT	FOOT	FOOT	SO FT	FOOT	
Williamson Co. Westbound Lanes												
CL IL 13 WBL - STA. 513+64 TO STA. 539+03												
	513+64.0	TO	539+03.0			635			635		508	
LT	513+64.0	TO	522+98.0	934				934			75	See note 1.
LT	524+55.0	TO	539+03.0	1,448				1,448				
LT	524+55.0	TO	526+56.0	201				201				Rt. Turn Ln. Line
LT	526+56.0	TO	528+81.0								18	See note 1.
LT	528+81.0	TO	539+03.0								82	See note 1.
RT	513+64.0	TO	523+18.0		954			954			76	See note 1.
RT	524+04.0	TO	539+03.0		1,499			1,499			120	See note 1.
LT	526+10.0						15.6			15.6		Rt Turn Arrow @ Nixville Rd.
LT	526+38.0						20.8			20.8		ONLY @ Nixville Rd.
Sub-Totals WBL's Williamson Co.				2,583	2,453.0	635	36.4	5,036	635	36.4	879	
Saline County Westbound Lanes												
CL IL 13 WBL - STA. 539+03 TO STA. 751+50												
	539+03.0	TO	651+98.0			2,824			2,824		2,259	
RT	539+03.0	TO	546+57.0		754			754			60	See note 1.
RT	547+38.0	TO	638+87.0		9,149			9,149			732	See note 1.
RT	639+72.0	TO	651+98.0		1,226			1,226				
RT	646+36.0	TO	651+98.0								45	See note 1.
LT	539+03.0	TO	545+98.0	695				695			56	See note 1.
LT	548+11.0	TO	638+36.0	9,025				9,025				
LT	548+11.0	TO	550+19.0	208				208				Rt. Turn Ln. @ Faith Chapel Rd.
LT	550+19.0	TO	552+51.0								19	See note 1.
LT	552+51.0	TO	638+36.0								687	See note 1.
LT	549+73.0						15.6			15.6		Rt. Turn Arrow @ Faith Chapel Rd.
LT	550+01.0						20.8			20.8		ONLY @ Faith Chapel Rd.
LT	640+40.0	TO	651+98.0	1,158				1,158				
LT	643+55.0	TO	646+56.0								24	See note 1.
LT	646+56.0	TO	651+98.0								43	See note 1.
RT	639+79.0	TO	643+35.0	356				356				Lt. Turn Ln. Line @ Harco Rd.
LT	640+39.0	TO	643+56.0	317				317				Rt. Turn Ln. Line @ Harco Rd.
LT	641+24.0						15.6			15.6		Rt. Turn Arrow @ Harco Rd.
LT	641+52.0						20.8			20.8		ONLY @ Harco Rd.
LT	643+10.0						15.6			15.6		Rt. Turn Arrow @ Harco Rd.
LT	643+38.0						20.8			20.8		ONLY @ Harco Rd.
RT	641+03.0						15.6			15.6		Lt. Turn Arrow @ Harco Rd.
RT	641+31.0						20.8			20.8		ONLY @ Harco Rd.
RT	642+89.0						15.6			15.6		Lt. Turn Arrow @ Harco Rd.
RT	643+17.0						20.8			20.8		ONLY @ Harco Rd.
EXIST. STRUCTURE				OMIT STR. NO. 083-0051 - STA. 651+98 TO STA. 653+36								
	653+36.0	TO	724+21.2			1771			1771		1417	
RT	653+36.0	TO	712+66.0		5930			5930			474	See note 1.
RT	713+53.0	TO	724+21.2		1068			1068				
RT	718+34.0	TO	724+21.2								47	See note 1.
LT	653+36.0	TO	712+38.0	5902				5902			472	See note 1.
LT	714+05.0	TO	724+21.2	1016				1016				
LT	716+09.0	TO	718+39.0								18	See note 1.
LT	718+39.0	TO	724+21.2								47	See note 1.
RT	713+57.0	TO	716+04.0	247				247				Lt. Turn Ln. Line @ Hankins Rd.
LT	714+05.0	TO	716+10.0	205				205				Rt. Turn Ln. Line @ Hankins Rd.
LT	715+64.0						15.6			15.6		Rt. Turn Arrow @ Hankins Rd.
LT	715+92.0						20.8			20.8		ONLY @ Hankins Rd.
RT	715+58.0						15.6			15.6		Lt. Turn Arrow @ Hankins Rd.
RT	715+86.0						20.8			20.8		ONLY @ Hankins Rd.
EO. STA. 724+21.21 (BK) = STA. 725+01.02 (AH)												
	725+01.0	TO	751+50.0			662			662		530	
RT	725+01.0	TO	751+50.0		2649			2649			212	See note 1.
LT	725+01.0	TO	751+50.0	2649				2649			212	See note 1.
Sub-Totals EBL's Saline Co.				42,554	5,257	254.8	254.8	42,554	5,257	254.8	7,354	
TOTALS WESTBOUND LANES				47,590	5,892	291.2	291.2	47,590	5,892	291.2	8,233	

Note 1: Quantify under Short-Term Pavement Marking Is for diagonals on shoulder.

WILLIAMSON/SALINE COUNTIES

FILE NAME =	USER NAME = mcoardkr	DESIGNED -	REVISED -	STATE OF ILLINOIS DEPARTMENT OF TRANSPORTATION				PAVEMENT MARKING SCHEDULE				F.A.P. RTE.	SECTION	COUNTY	TOTAL SHEETS	SHEET NO.
at:\pwork\pwork\mcoardkr\d0209826\78218-shr-plot.dgn	PLOT SCALE = 1/8" = 100.0000' / IN.	DRAWN -	REVISED -									331	09_PAVT_PRES_EVII-1		21	9
PLOT DATE = 2/3/2011	DATE -	CHECKED -	REVISED -									SCALE: SHEET NO. OF SHEETS STA. TO STA.				CONTRACT NO. 78218



FILE NAME =
 c:\pwwork\pwwork\mccordkr\d020926\78219-sht-plen.dgn
 PLOT SCALE = 200.0000' / IN.
 PLOT DATE = 1/19/2011

USER NAME = mcoordkr	DESIGNED -	REVISD -
DRAWN -	REVISD -	REVISD -
CHECKED -	REVISD -	REVISD -
DATE -	REVISD -	REVISD -

**STATE OF ILLINOIS
 DEPARTMENT OF TRANSPORTATION**

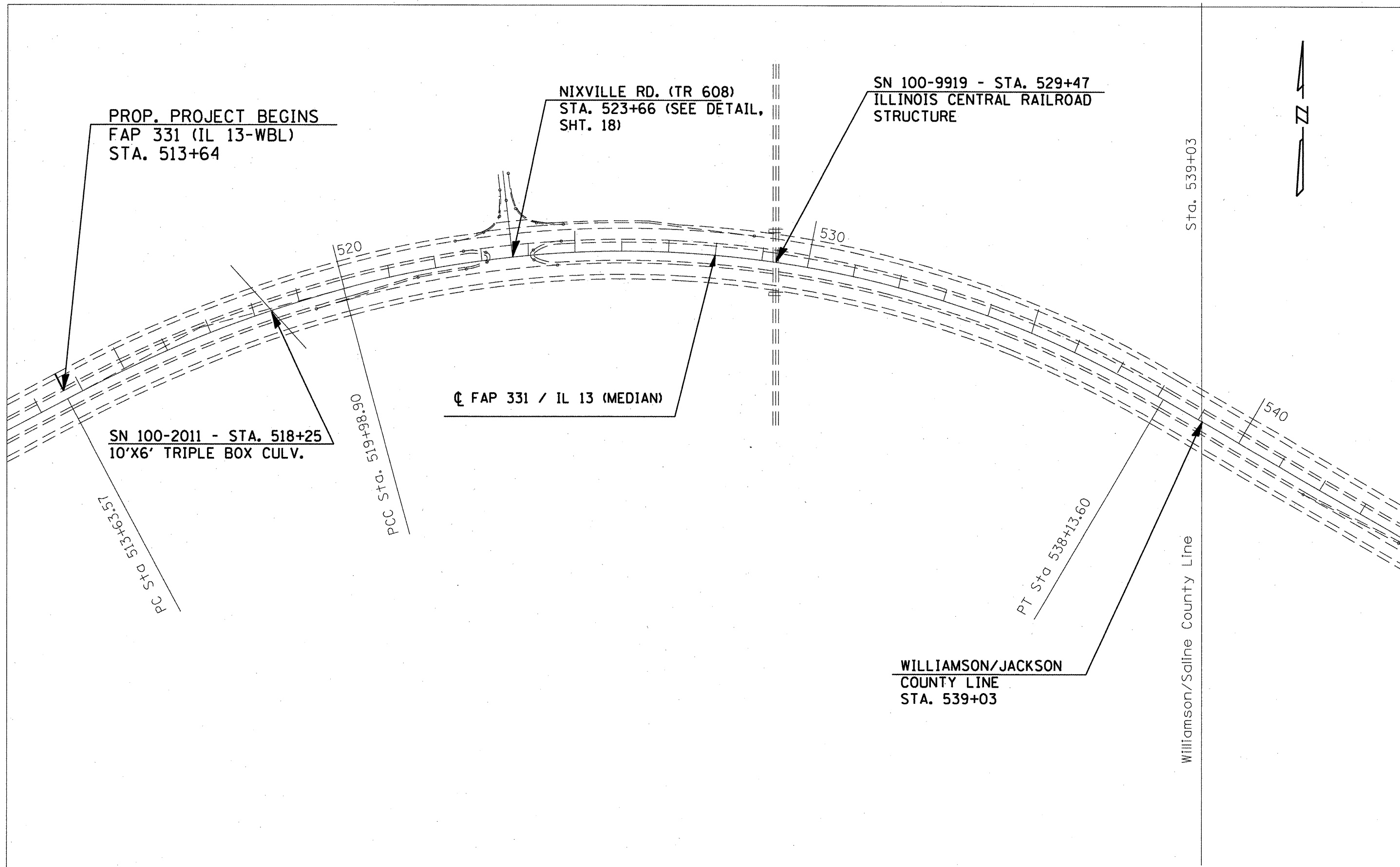
LOCATION MAP FAP 331 (WBL)
STA. 513 ± 64 TO STA. 751 ± 50

SCALE: _____ SHEET NO. ____ OF ____ SHEETS STA. _____ TO STA. _____

F.A.P. RTE.	SECTION	COUNTY	TOTAL SHEETS	SHEET NO.
331	09-PAYI..PBES..2011-1		21	9
				CONTRACT NO. 78218

ILLINOIS FED. AID PROJECT

•WILLIAMSON/SALINE COUNTIES



FILE NAME =	USER NAME = mcoordkr	DESIGNED -	REVISED -
c:\pwwork\pwwork\mcoordkr\d8209826\78	18-sht-plan.dgn	DRAWN -	REVISED -
	PLOT SCALE = 200.0000' / IN.	CHECKED -	REVISED -
	PLOT DATE = 1/14/2011	DATE -	REVISED -

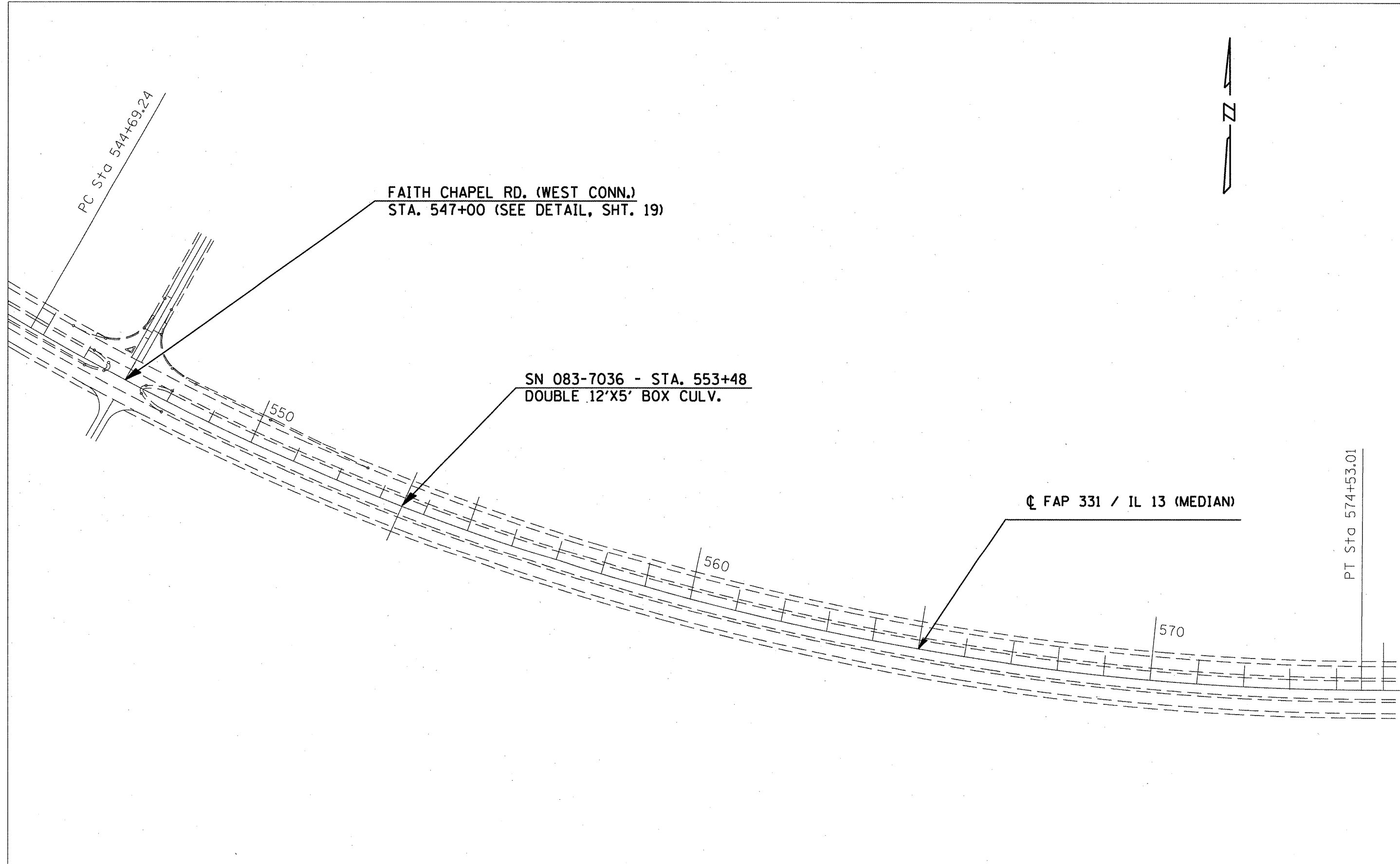
**STATE OF ILLINOIS
DEPARTMENT OF TRANSPORTATION**

PLAN SHEET

SCALE: _____ SHEET NO. _____ OF _____ SHEETS STA. 513+64 TO STA. 544+00

F.A.P. RTE. 331	SECTION 09 PAVT. PRES. EXH-1	COUNTY	TOTAL SHEETS 21	SHEET NO. 10
CONTRACT NO. 78218				ILLINOIS FED. AID PROJECT

•WILLIAMSON/SALINE COUNTIES



PC STA 544+69.24

FAITH CHAPEL RD. (WEST CONN.)
STA. 547+00 (SEE DETAIL, SHT. 19)

SN 083-7036 - STA. 553+48
DOUBLE 12'X5' BOX CULV.

☉ FAP 331 / IL 13 (MEDIAN)

PT STA 574+53.01

550

560

570



*WILLIAMSON/SALINE COUNTIES

FILE NAME =
c:\pwork\pwork\mooordr\08209826\78218

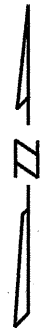
USER NAME = mooordr
B-sh-t-pln.dgn
PLOT SCALE = 200.0000' / IN.
PLOT DATE = 1/14/2011

DESIGNED -	---	REVISED -	-----
DRAWN -	---	REVISED -	-----
CHECKED -	---	REVISED -	-----
DATE -	-----	REVISED -	-----

STATE OF ILLINOIS
DEPARTMENT OF TRANSPORTATION

----- PLAN SHEET -----
SCALE: _____ SHEET NO. ____ OF ____ SHEETS STA. 544+00 TO STA. 575+50

F.A.P. RTE.	SECTION	COUNTY	TOTAL SHEETS	SHEET NO.
331	09_PAVT_PRES_EYII=1		21	11
CONTRACT NO. 78218				
ILLINOIS FED. AID PROJECT				

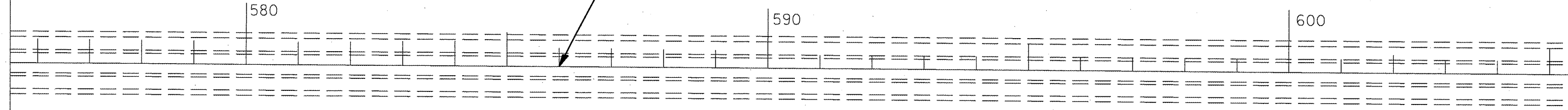


☉ FAP 331 / IL 13 (MEDIAN)

580

590

600



*WILLIAMSON/SALINE COUNTIES

FILE NAME =
c:\p\work\p\idat\mcoordkr\d0209826\78

USER NAME = mcoordkr
18-shr-plan.dgn
PLOT SCALE = 200.0000' / IN.
PLOT DATE = 1/14/2011

DESIGNED - ---
DRAWN - ---
CHECKED - ---
DATE - ---

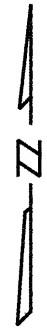
REVISED - ---
REVISED - ---
REVISED - ---
REVISED - ---

STATE OF ILLINOIS
DEPARTMENT OF TRANSPORTATION

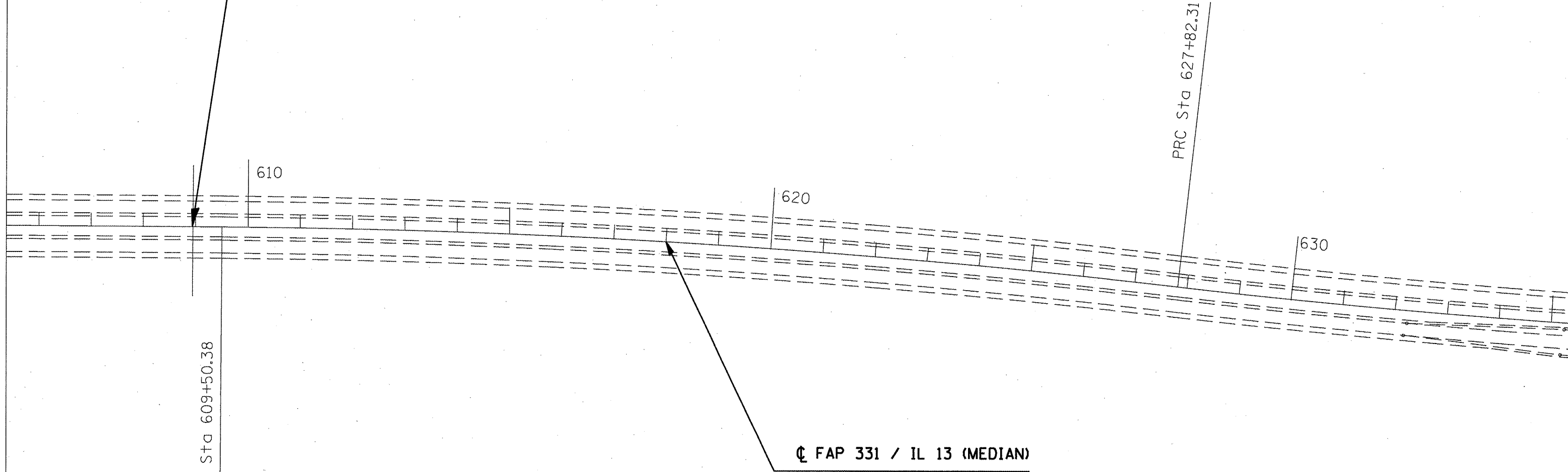
PLAN SHEET

SCALE: _____ SHEET NO. ___ OF ___ SHEETS STA. 757+50 TO STA. 605+25

F.A.P. RTE.	SECTION	COUNTY	TOTAL SHEETS	SHEET NO.
331	09_PAVT_PRES_EXII-1		21	12
CONTRACT NO. 78218				
ILLINOIS FED. AID PROJECT				



SN 083-2011 - STA. 608+95
EX. 8'X5' TRIPLE BOX CULV.



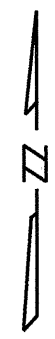
FILE NAME =	USER NAME = mccaordkr	DESIGNED -	REVISIONS
ct:\pw_work\pwidot\mccaordkr\d0209825\78318-sh-t-pln.dgn		DRAWN -	REVISIONS
	PLOT SCALE = 200.0000' / IN.	CHECKED -	REVISIONS
	PLOT DATE = 1/14/2011	DATE -	REVISIONS

**STATE OF ILLINOIS
DEPARTMENT OF TRANSPORTATION**

PLAN SHEET

SCALE: _____ SHEET NO. ____ OF ____ SHEETS STA. 605+25 TO STA. 635+25

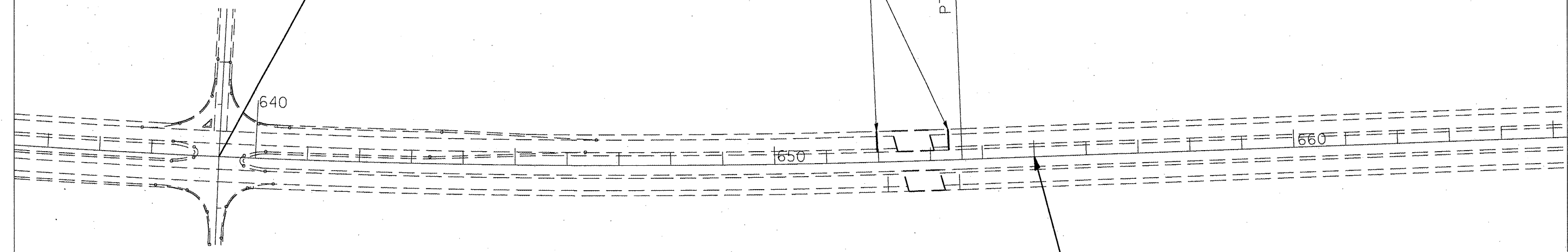
*WILLIAMSON/SALINE COUNTIES				
F.A.P. RTE.	SECTION	COUNTY	TOTAL SHEETS	SHEET NO.
331	09_PAVI_PRES_EX11-1		21	13
CONTRACT NO. 78218				
ILLINOIS FED. AID PROJECT				



S. HARCO RD. (TR 420)
 STA. 639+30 (SEE DETAIL,
 SHT. 20)

EX. S.N. 083-0051 TO BE
 OMITTED
 STA. 651+98 TO STA. 653+36

PT Sta 653+60.51



☉ FAP 331 / IL 13 (MEDIAN)

•WILLIAMSON/SALINE COUNTIES

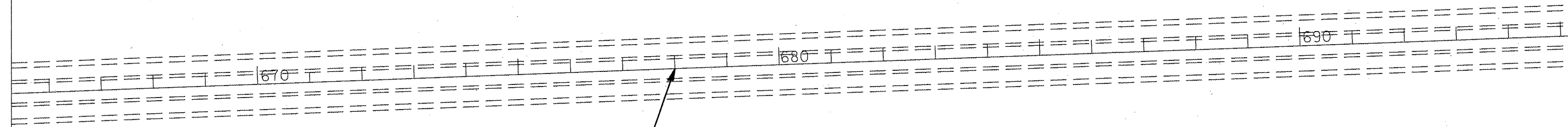
FILE NAME =	USER NAME = mcoardkr	DESIGNED -	REVISED -
ca\pwwork\pwwidat\mcoardkr\d0209826\78218-sht-plan.dgn		DRAWN -	REVISED -
		CHECKED -	REVISED -
		DATE -	REVISED -

STATE OF ILLINOIS
DEPARTMENT OF TRANSPORTATION

----- **PLAN SHEET** -----

SCALE: _____ SHEET NO. _____ OF _____ SHEETS STA. 635+25 TO STA. 665+20

F.A.P. RTE.	SECTION	COUNTY	TOTAL SHEETS	SHEET NO.
331	09_PAVI_PRES_EXI:1		21	14
CONTRACT NO. 78218			ILLINOIS FED. AID PROJECT	



Q FAP 331 / IL 13 (MEDIAN)

WILLIAMSON/SALINE COUNTIES

FILE NAME =
c:\p\work\p\wdot\mcoordkr\ld8209826\78218-sh-t-plan.dgn

USER NAME = mcoordkr
PLOT SCALE = 200.0000 / IN.
PLOT DATE = 1/14/2011

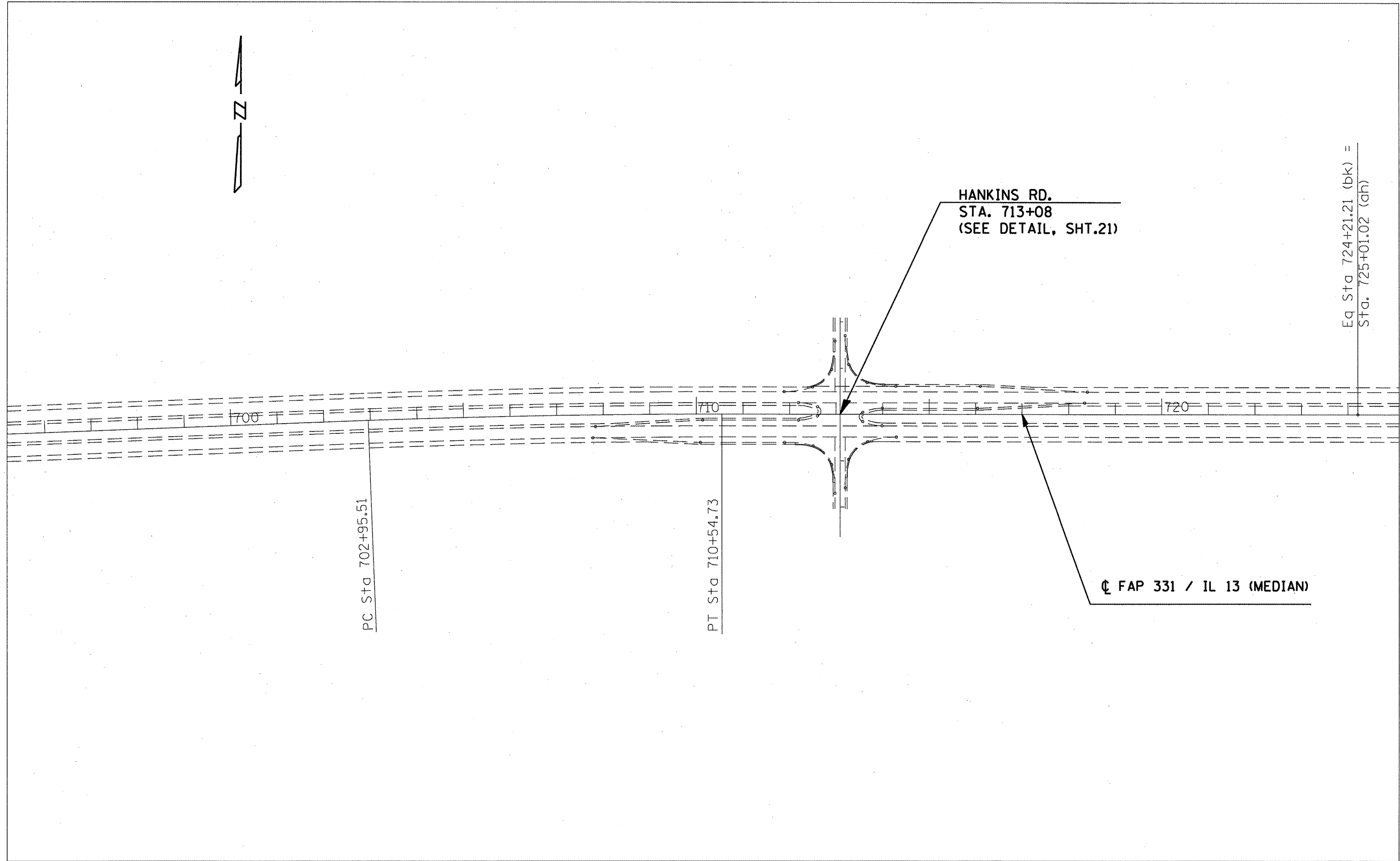
DESIGNED	-	---	REVISED	-	-----
DRAWN	-	---	REVISED	-	-----
CHECKED	-	---	REVISED	-	-----
DATE	-	---	REVISED	-	-----

STATE OF ILLINOIS
DEPARTMENT OF TRANSPORTATION

PLAN SHEET

SCALE: _____ SHEET NO. ____ OF ____ SHEETS STA. 665+20 TO STA. 695+10

F.A.P. RTE.	SECTION	COUNTY	TOTAL SHEETS	SHEET NO.
331	09_PAVT_PRES_EYII-1		21	15
CONTRACT NO. 78218			ILLINOIS FED. AID PROJECT	



WILLIAMSON/SALINE COUNTIES

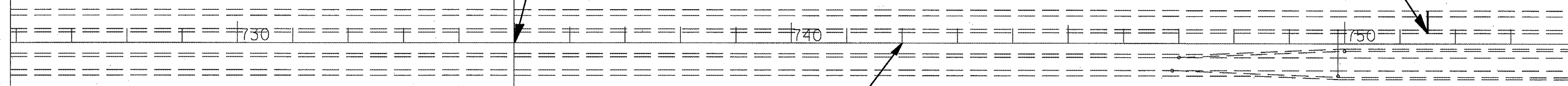
FILE NAME =	USER NAME = mcoordkr	DESIGNED -	REVISIONS	STATE OF ILLINOIS DEPARTMENT OF TRANSPORTATION	PLAN SHEET	F.A.P. RTE.	SECTION	COUNTY	TOTAL SHEETS	SHEET NO.
c:\pwwork\pwwork\mcoordkr\d0209826\78318-sht-plan.dgn	PLOT SCALE = 200.0000' / IN.	DRAWN -	REVISIONS			.331	09_PAVI_PRES_EYII-1		21	16
PLOT DATE = 1/14/2011	DATE -	CHECKED -	REVISIONS			CONTRACT NO. 70210			ILLINOIS FED. AID PROJECT	
		DATE -	REVISIONS			SCALE: _____	SHEET NO. _____ OF _____ SHEETS	STA. 695±10	TO STA. 725±90	



SN 083-7040 - STA. 735+00
BOX CULV.

PROP. PROJECT ENDS
FAP 331 (IL 13-WBL)
STA. 751+50

754+07.29



CL FAP 331 / IL 13 (MEDIAN)

WILLIAMSON/SALINE COUNTIES

FILE NAME *
c:\p\work\p\midot\mccordkr\d0209826\7818-sh1-plan.dgn

USER NAME * mccordkr
PLOT SCALE = 200.0000' / IN.
PLOT DATE = 1/14/2011

DESIGNED -	---	REVISED -	---
DRAWN -	---	REVISED -	---
CHECKED -	---	REVISED -	---
DATE -	---	REVISED -	---

STATE OF ILLINOIS
DEPARTMENT OF TRANSPORTATION

PLAN SHEET

SCALE: SHEET NO. OF SHEETS STA. 725+90 TO STA. 751+50

F.A.P. RTE.	SECTION	COUNTY	TOTAL SHEETS	SHEET NO.
331	09_PAVI_CBES_FY11-1		21	17
CONTRACT NO. 78218			ILLINOIS FED. AID PROJECT	

NIXVILLE RD. (TR 608)
STA. 523+66

☉ WBL FAP 331 (IL 13)

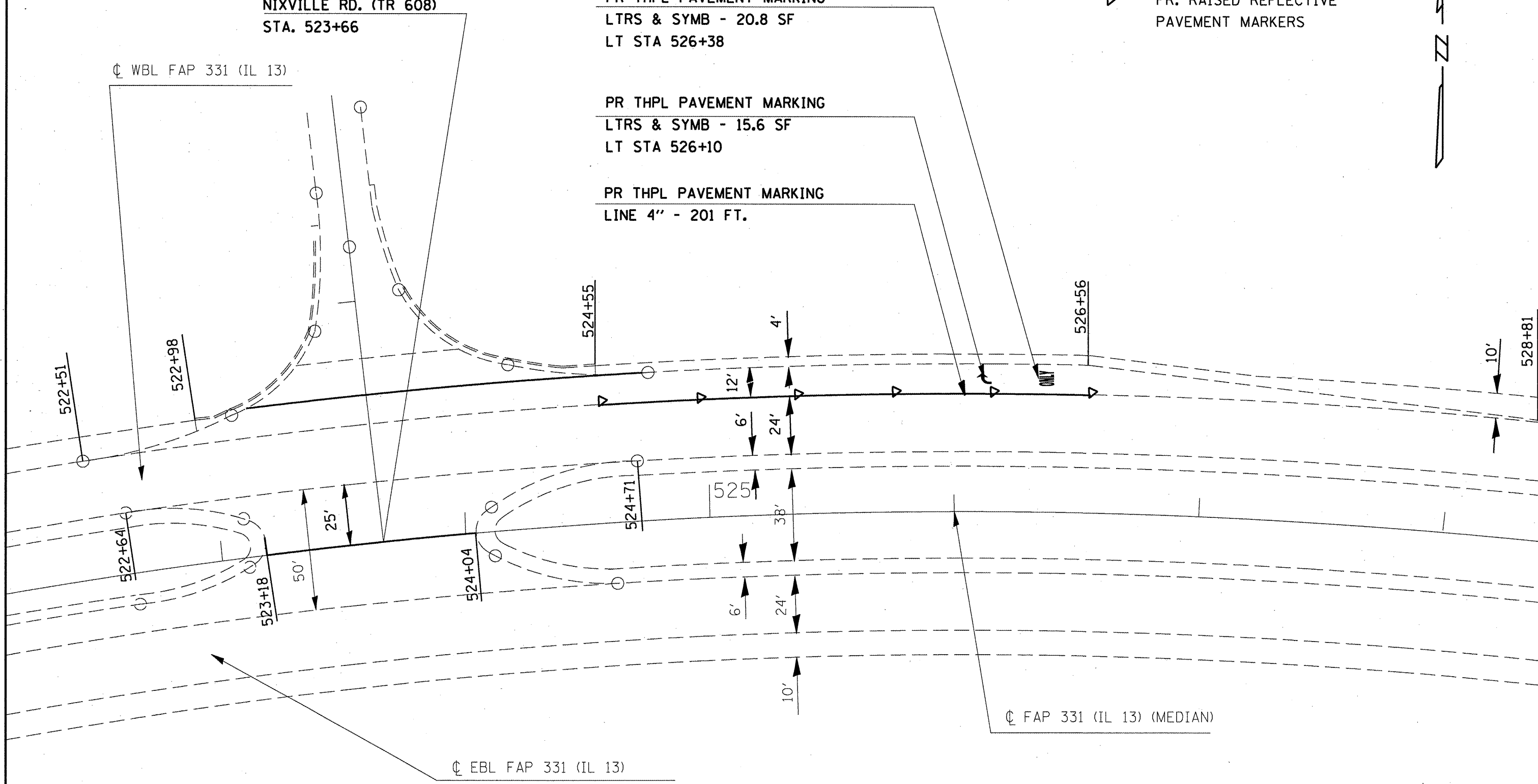
PR THPL PAVEMENT MARKING
LTRS & SYMB - 20.8 SF
LT STA 526+38

PR THPL PAVEMENT MARKING
LTRS & SYMB - 15.6 SF
LT STA 526+10

PR THPL PAVEMENT MARKING
LINE 4" - 201 FT.

LEGEND

▷ PR. RAISED REFLECTIVE
PAVEMENT MARKERS

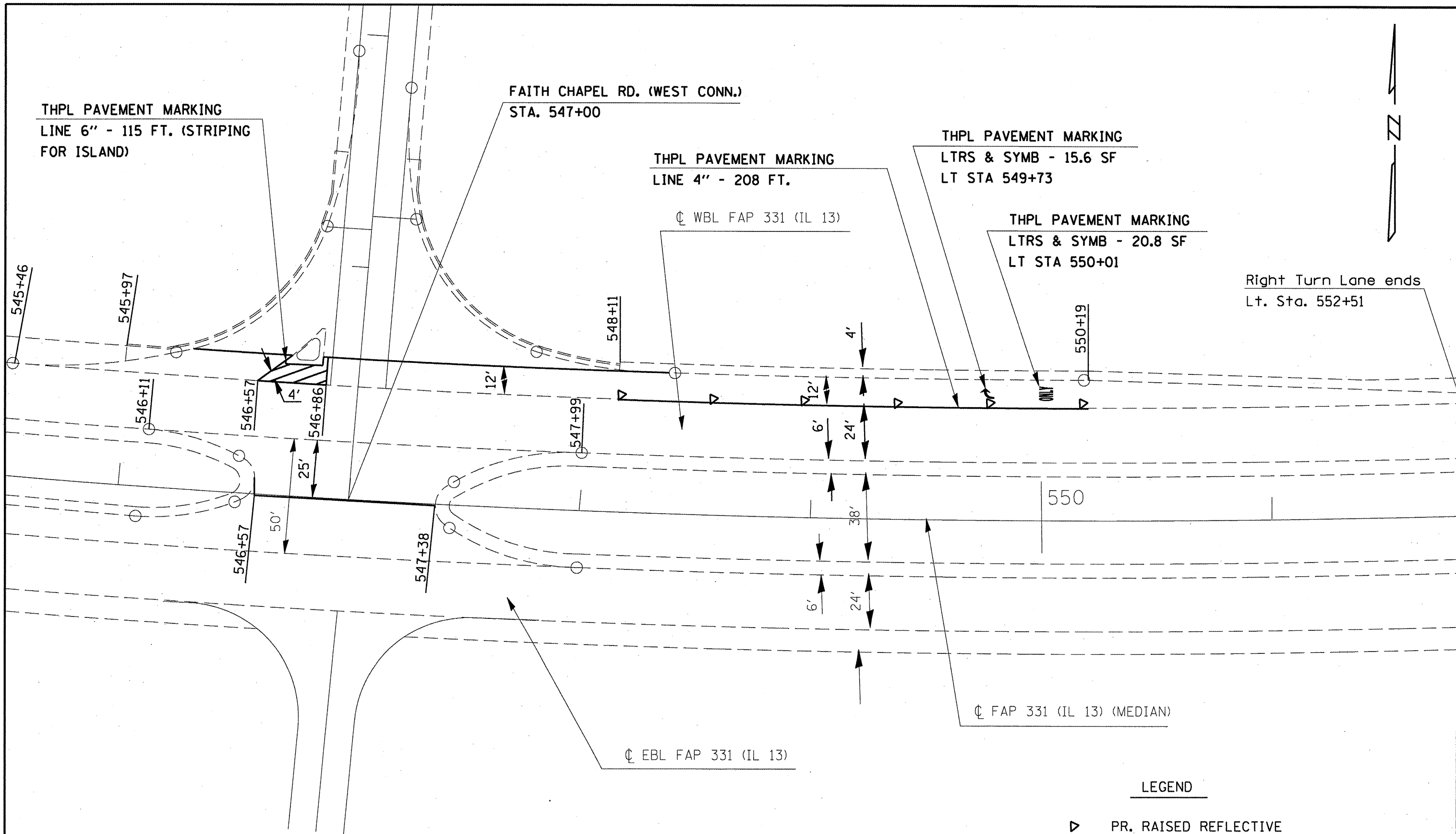


☉ FAP 331 (IL 13) (MEDIAN)

☉ EBL FAP 331 (IL 13)

* WILLIAMSON/SALINE COUNTIES

FILE NAME = c:\p\work\p\dot\mccordkr\0209826\782	USER NAME = mccordkr 18-sht-plen.dgn	DESIGNED - --- DRAWN - --- CHECKED - --- DATE - ---	REVISED - --- REVISED - --- REVISED - --- REVISED - ---	STATE OF ILLINOIS DEPARTMENT OF TRANSPORTATION	PAVEMENT MARKING DETAIL NIXVILLE RD.	F.A.P. RTE: -331	SECTION 09_PAVT_P09E0BY_2011:1	COUNTY	TOTAL SHEETS -21-	SHEET NO. -18-
						SCALE: _____	SHEET NO. _____ OF _____ SHEETS	STA. _____ TO STA. _____	CONTRACT NO. 78218 ILLINOIS FED. AID PROJECT	



Right Turn Lane ends
Lt. Sta. 552+51

LEGEND

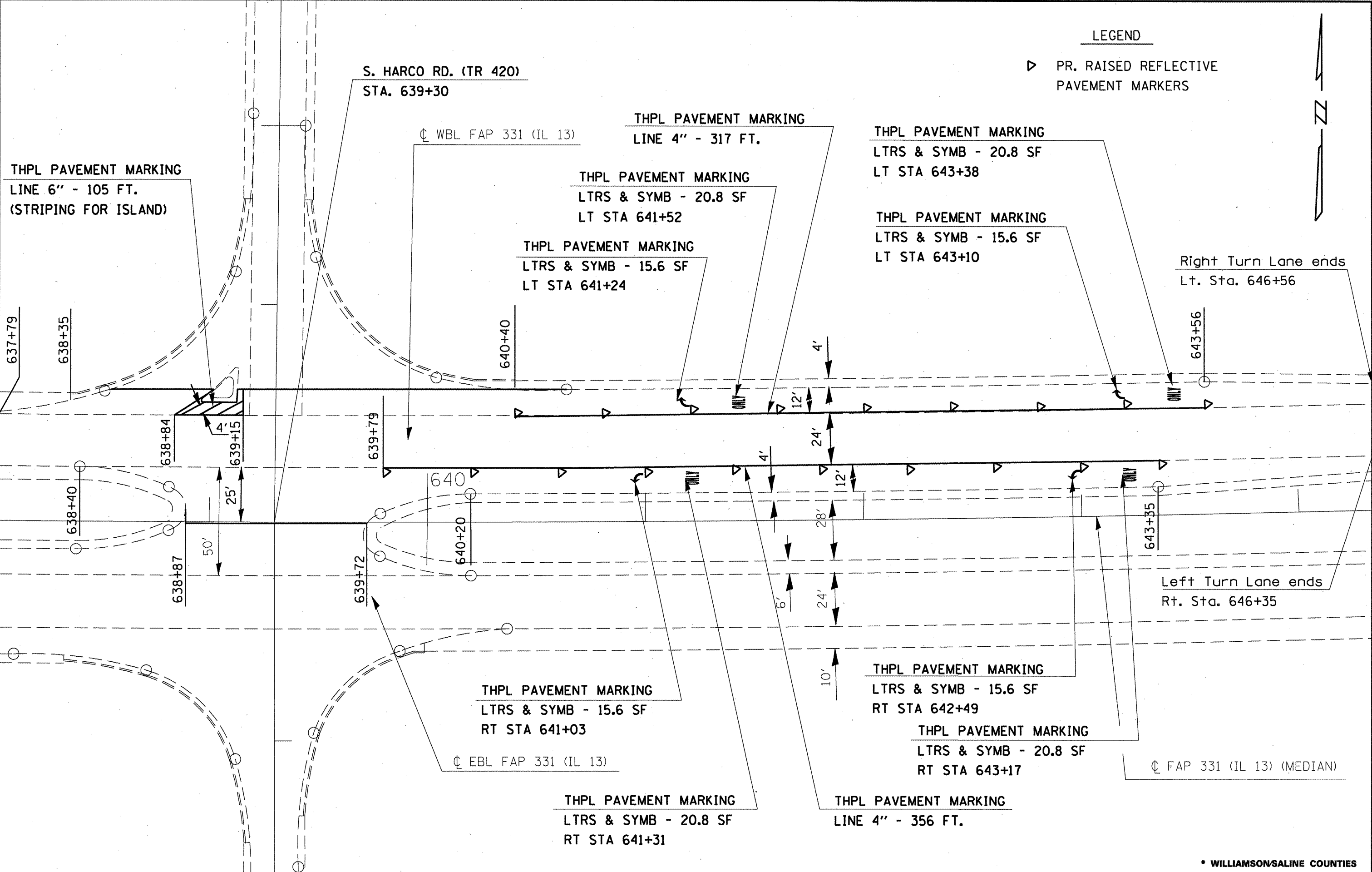
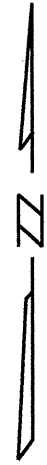
▷ PR. RAISED REFLECTIVE
PAVEMENT MARKERS

FILE NAME = <small>c:\pwwork\pwwork\mooardkr\d0209626\78</small>		USER NAME = mooardkr <small>B-shit-plan.dgn</small>		DESIGNED - DRAWN - CHECKED - DATE -	REVISED - REVISED - REVISED - REVISED -	STATE OF ILLINOIS DEPARTMENT OF TRANSPORTATION	PAVEMENT MARKING DETAIL... FAITH CHAPEL RD.		F.A.P. RTE. -331	SECTION 09_PAVT_PRESBY_2011-1	COUNTY -21-	TOTAL SHEETS -19-	SHEET NO. -19-
PLOT SCALE = 40.0000' / IN. PLOT DATE = 1/14/2011		DATE -		SCALE: _____ SHEET NO. _____ OF _____ SHEETS STA. _____ TO STA. _____			CONTRACT NO. 78218 <small>(ILLINOIS) FED. AID PROJECT</small>						

* WILLIAMSON/SALINE COUNTIES

LEGEND

▷ PR. RAISED REFLECTIVE PAVEMENT MARKERS

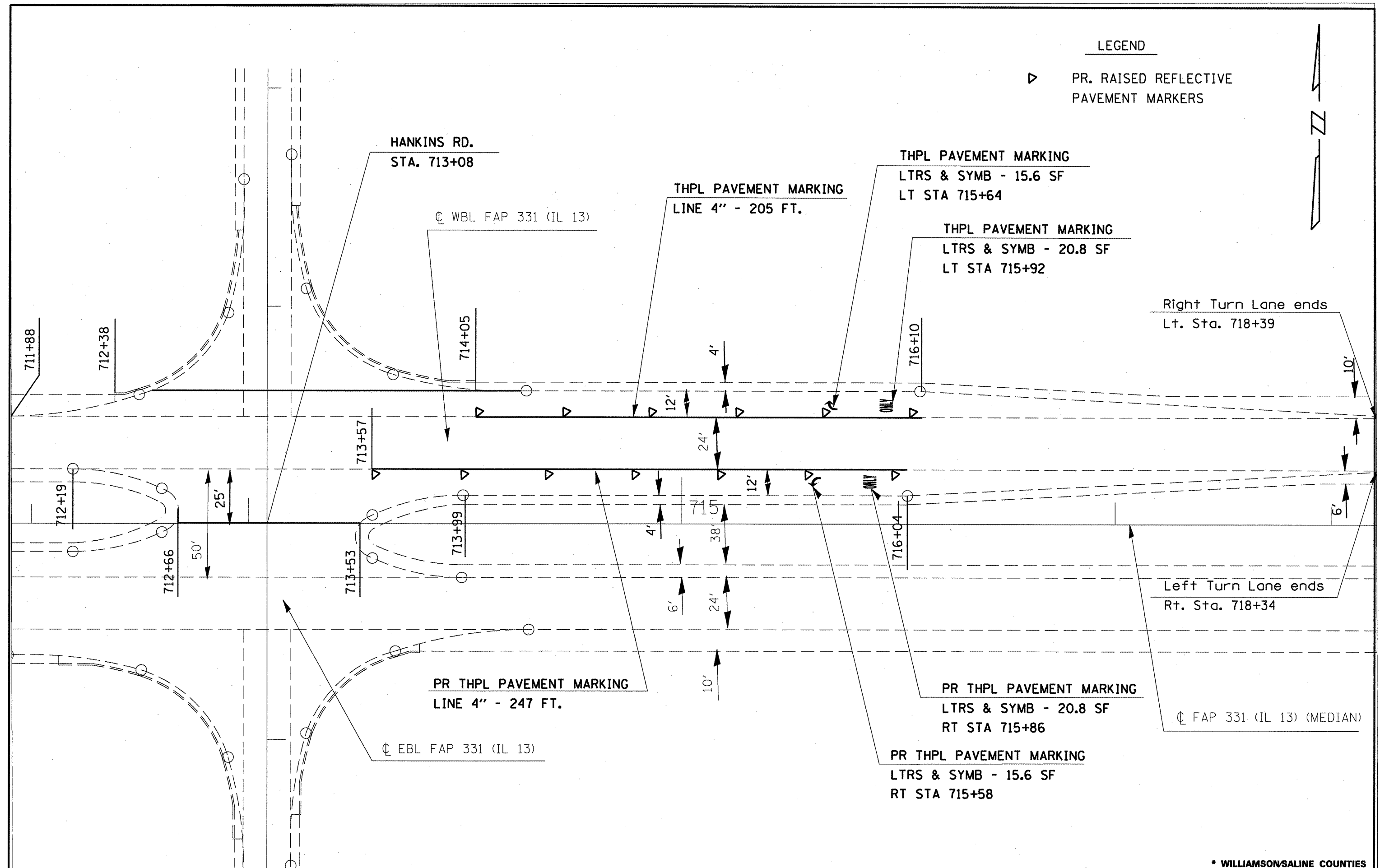


• WILLIAMSON/SALINE COUNTIES

FILE NAME =	USER NAME = mcaordkr	DESIGNED -	REVISD -	STATE OF ILLINOIS DEPARTMENT OF TRANSPORTATION	PAVEMENT MARKING DETAIL S. HARCO RD.	F.A.P. RTE. =	SECTION	COUNTY	TOTAL SHEETS	SHEET NO.	
at:\p_wor\p\sidat\mcaordkr\d0209826\78218-sht-plen.dgn	18-sht-plen.dgn	DRAWN -	REVISD -			331	09_PAVT_PBESEBY_2011-1		21	20	
PLOT SCALE = 48.0000' / IN.		CHECKED -	REVISD -			CONTRACT NO. 78218					
PLOT DATE = 1/14/2011		DATE -	REVISD -			ILLINOIS FED. AID PROJECT					

LEGEND

▷ PR. RAISED REFLECTIVE PAVEMENT MARKERS



Right Turn Lane ends
Lt. Sta. 718+39

Left Turn Lane ends
Rt. Sta. 718+34

☉ FAP 331 (IL 13) (MEDIAN)

* WILLIAMSON/SALINE COUNTIES

FILE NAME =
c:\pw\work\p\p\dot\mccordkr\0209826\7818-shr-plan.dgn

USER NAME = mccordkr
PLOT SCALE = 48.0000' / IN.
PLOT DATE = 1/14/2011

DESIGNED -
DRAWN -
CHECKED -
DATE -

REVISED -
REVISED -
REVISED -
REVISED -

STATE OF ILLINOIS
DEPARTMENT OF TRANSPORTATION

PAVEMENT MARKING DETAIL...
HANKINS RD.
SCALE: SHEET NO. OF SHEETS STA. TO STA.

F.A.P. RTE.	SECTION	COUNTY	TOTAL SHEETS	SHEET NO.
331	09_PAVT_PBESEBY_2011-1		21	21
			CONTRACT NO. 10218	
ILLINOIS FED. AID PROJECT				