

MARCH 11, 2011 LETTING

STATE OF ILLINOIS
DEPARTMENT OF TRANSPORTATION
DIVISION OF HIGHWAYS

PROPOSED
HIGHWAY PLANS

FAI 57 (I-57)
SECTION: (1X-1)A-1,R-6,N-6,TS-5
PROJECT NO. IM-057-2(154)053
WILLIAMSON COUNTY

F.A.P. RTE.	SECTION	COUNTY	TOTAL SHEETS	SHEET NO.
331	(1X-1)A-1,R-6,N-6,TS-5	WILLIAMSON	52	1
ILLINOIS CONTRACT NO. 78223				

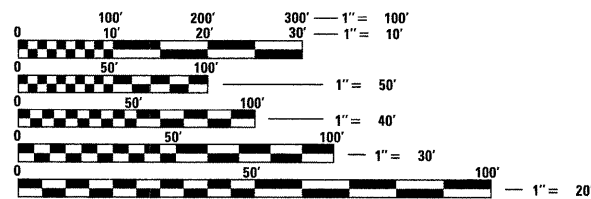
FOR INDEX OF SHEETS, SEE SHEET NO. 3
FOR SUMMARY OF QUANTITIES, SEE SHEETS NO. 5-6

STATION EQUATION:
NONE

OMISSIONS:
NONE

TRAFFIC DATA:
2009 ADT FOR RAMP D (LARGEST RAMP ADT)
3,890 WITH 14 % TRUCKS
2009 ADT FOR FAP 331 (IL 13)
30,700 WITH 7 % TRUCKS

TOWNSHIPS:
W. MARION



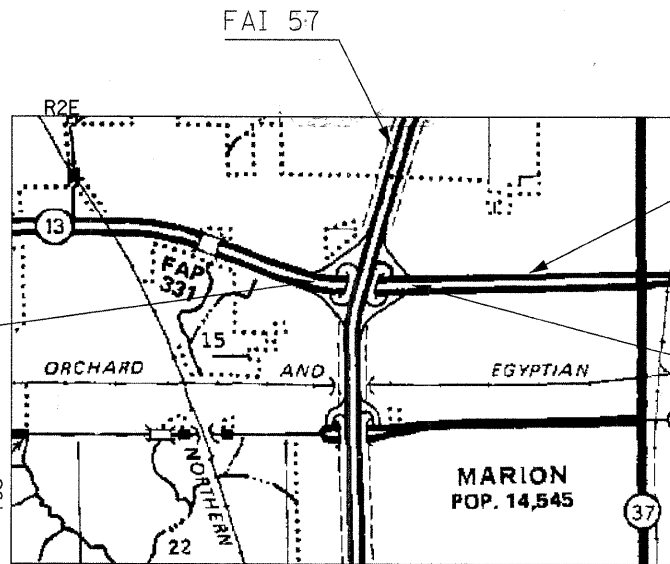
FULL SIZE PLANS HAVE BEEN PREPARED USING STANDARD ENGINEERING SCALES. REDUCED SIZED PLANS WILL NOT CONFORM TO STANDARD SCALES. IN MAKING MEASUREMENTS ON REDUCED PLANS, THE ABOVE SCALES MAY BE USED.

J.U.L.I.E.
JOINT UTILITY LOCATION INFORMATION FOR EXCAVATION
1-800-892-0123
OR 811

PROJECT ENGINEER: CHARLES STEIN
PROJECT MANAGER: RICHARD BRASEL

CONTRACT NO. 78223

C-99-001-11



PROJECT BEGINS
STA. 1802+97 IL 13

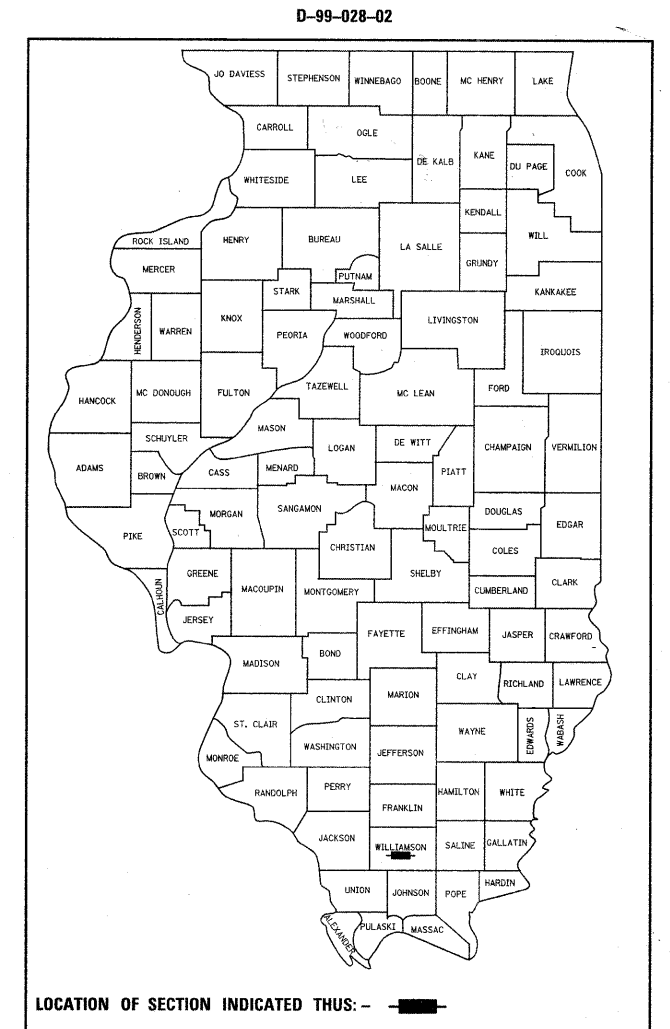
FAP 331 (IL 13)

Marion

PROJECT ENDS
STA. 1822+50 IL 13



APPROX. SCALE
1" = 2000'



GEOTECH
ENGINEERING & TESTING, INC.

601 NORTH 4TH STREET MURRAY, KENTUCKY 42071
500 SOUTH 17th STREET PADUCAH, KENTUCKY 42003
403 NORTH COURT STREET MARION, ILLINOIS 62969
PHONE - 270.753.7307 PHONE - 270.443.1995 PHONE - 618.997.9190
WWW.GEOTECHENGINEERS.NET COPYRIGHT © 2005 GEOTECH ENGINEERING & TESTING, INC.

STATE OF ILLINOIS
DEPARTMENT OF TRANSPORTATION
DIVISION OF HIGHWAYS

SUBMITTED Jan 25 20 11
My C. Ham
DEPUTY DIRECTOR OF HIGHWAYS, REGION ENGINEER

March 25 20 11
Scott E. Stitt, P.E.
acting ENGINEER OF DESIGN AND ENVIRONMENT

March 25 20 11
Christine M. Reed
DIRECTOR OF HIGHWAYS, CHIEF ENGINEER



FAP 331 (IL13) GROSS LENGTH OF PROJECT: 903.00 FT. = 0.171 MILES
NET LENGTH OF PROJECT: 903.00 FT. = 0.171 MILES

PRINTED BY THE AUTHORITY
OF THE STATE OF ILLINOIS