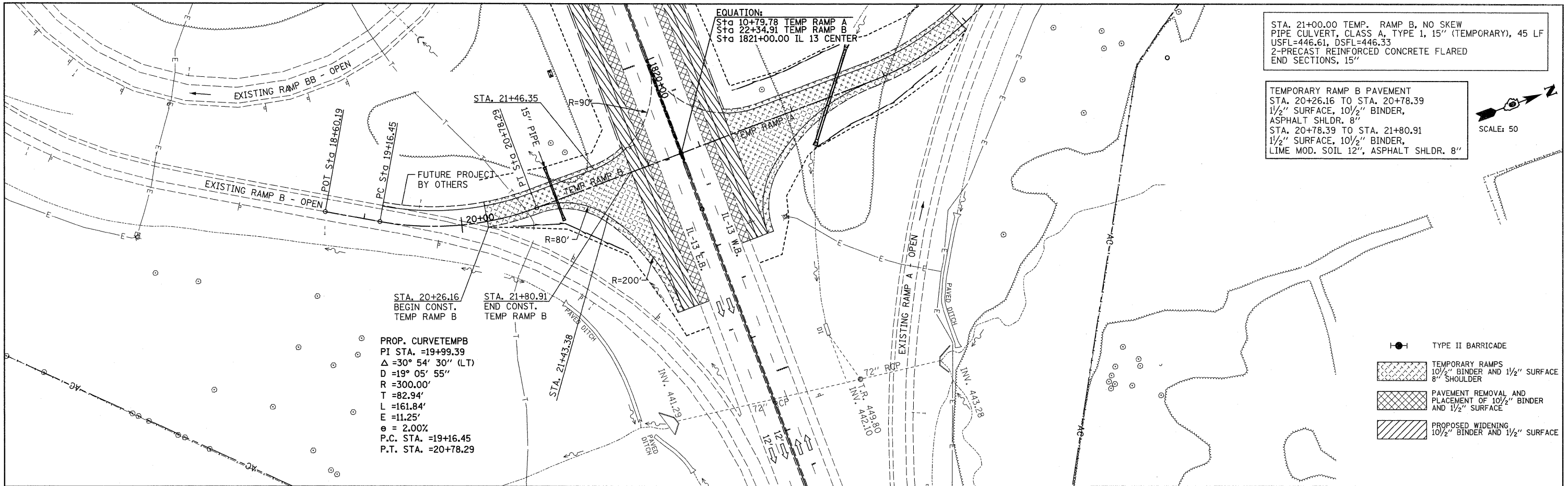


PLAN	SURVEYED	BY	DATE
	ALIGNED		
	RT. OF WAY CHECKED		
	NO. _____		
	ROAD FILE NAME		

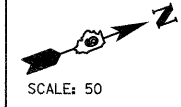
PROFILE	SURVEYED	BY	DATE
	GRADES CHECKED		
	S.M. NOTED		
	STRUCTURE NOTATIONS CHD		
	NO. _____		



EQUATION:  
 Sta 10+79.78 TEMP RAMP A  
 Sta 22+34.91 TEMP RAMP B  
 Sta 1821+00.00 IL 13 CENTER

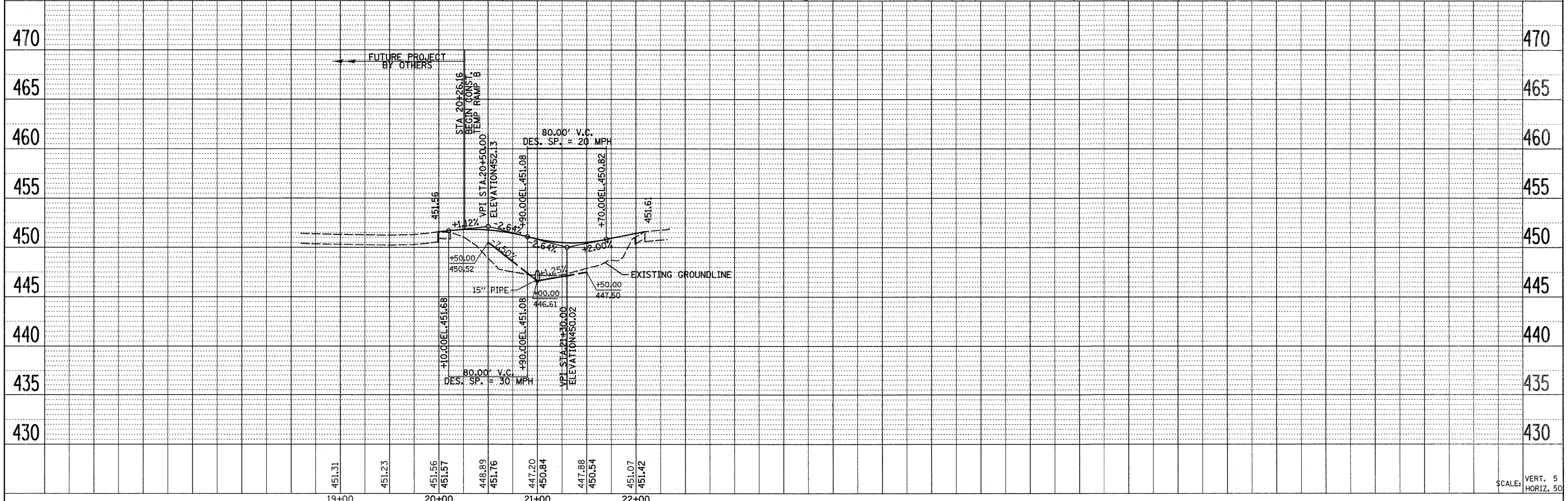
STA. 21+00.00 TEMP. RAMP B, NO SKEW  
 PIPE CULVERT, CLASS A, TYPE 1, 15" (TEMPORARY), 45 LF  
 USFL=446.61, DSFL=446.33  
 2-PRECAST REINFORCED CONCRETE FLARED  
 END SECTIONS, 15"

TEMPORARY RAMP B PAVEMENT  
 STA. 20+26.16 TO STA. 20+78.39  
 1 1/2" SURFACE, 10 1/2" BINDER,  
 ASPHALT SHLDR. 8"  
 STA. 20+78.39 TO STA. 21+80.91  
 1 1/2" SURFACE, 10 1/2" BINDER,  
 LIME MOD. SOIL 12", ASPHALT SHLDR. 8"



PROP. CURVETEMP B  
 PI STA. =19+99.39  
 $\Delta = 30^\circ 54' 30''$  (LT)  
 $D = 19^\circ 05' 55''$   
 $R = 300.00'$   
 $T = 82.94'$   
 $L = 161.84'$   
 $E = 11.25'$   
 $e = 2.00\%$   
 P.C. STA. =19+16.45  
 P.T. STA. =20+78.29

- TYPE II BARRICADE
- TEMPORARY RAMPS  
10 1/2" BINDER AND 1 1/2" SURFACE  
8" SHOULDER
- PAVEMENT REMOVAL AND  
PLACEMENT OF 10 1/2" BINDER  
AND 1 1/2" SURFACE
- PROPOSED WIDENING  
10 1/2" BINDER AND 1 1/2" SURFACE



SCALE: VERT. 5  
 HORIZ. 50

FILE NAME =	USER NAME = *USER*	DESIGNED -	REVISED -	<b>STATE OF ILLINOIS DEPARTMENT OF TRANSPORTATION</b>	<b>TEMPORARY RAMP B PLAN &amp; PROFILE</b>	F.A.P. RTE.	SECTION	COUNTY	TOTAL SHEETS	SHEET NO.	
#FILE#		DRAWN -	REVISED -			331	(1X-1A-1,R-6,N-6,TS-5	WILLIAMSON	52	25	
PLOT SCALE = *SCALE*		CHECKED -	REVISED -			CONTRACT NO. 78223					
PLOT DATE = *DATE*		DATE -	REVISED -			ILLINOIS FED. AID PROJECT					