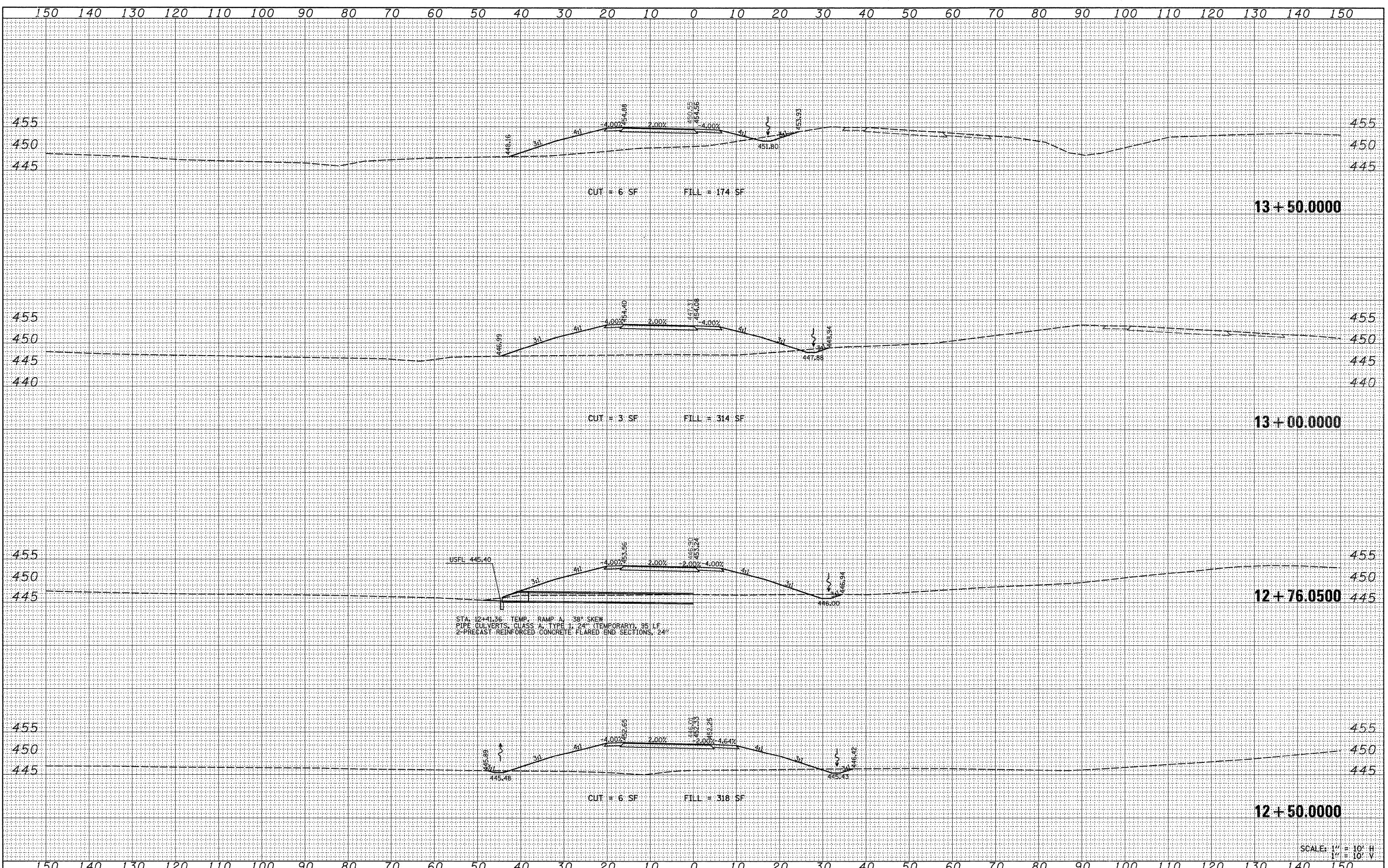


DATE	
BY	
SURVEYED	
PLANNED	
REVISIONS	
NOTE BOOK	
AREAS CHECKED	
NO.	

DATE	
BY	
SURVEYED	
PLANNED	
REVISIONS	
NOTE BOOK	
AREAS CHECKED	
NO.	



STA. 12+41.36 TEMP. RAMP A - 38° SKEW  
 PIPE CULVERTS, CLASS A, TYPE 1, 24" (TEMPORARY), 95 LF  
 2-PRECAST REINFORCED CONCRETE FLARED END SECTIONS, 24"

SCALE: 1" = 10' H  
 1" = 10' V

FILE NAME =	USER NAME = *USER*	DESIGNED -	REVISED -	<b>STATE OF ILLINOIS DEPARTMENT OF TRANSPORTATION</b>	<b>CROSS SECTIONS TEMPORARY RAMP A</b>				F.A.P. RTE.	SECTION	COUNTY	TOTAL SHEETS	SHEET NO.
*FILEL*		DRAWN -	REVISED -		331	(1X-1)A-1,R-6,N-6,TS-5	WILLIAMSON	52	44				
		CHECKED -	REVISED -		CONTRACT NO. 78223								
		DATE -	REVISED -		FED. ROAD DIST. NO. ILLINOIS FED. AID PROJECT								

SCALE: 1" = 10' SHEET NO. 2 OF 3 SHEETS STA. 12+50.0000 TO STA. 13+50.0000