

STATE OF ILLINOIS
DEPARTMENT OF TRANSPORTATION
DIVISION OF HIGHWAYS

**PROPOSED
HIGHWAY PLANS**

FAS ROUTE 944 (US 60 /62)
SECTION (138D-BR)I-6
SN 002-0005 OVER MISSISSIPPI RIVER
FLOOR BEAMS REPAIR AND MISC. REPAIRS
ALEXANDER COUNTY
C-99-037-11

F.A.S. RTE.	SECTION	COUNTY	TOTAL SHEETS	SHEET NO.
944	(138D-BR)I-6	ALEXANDER	22	1
		ILLINOIS	CONTRACT NO. 78250	

D-99-027-11



FOR INDEX OF SHEETS, SEE SHEET NO. 2
FOR SUMMARY OF QUANTITIES, SEE SHEET NO. 3

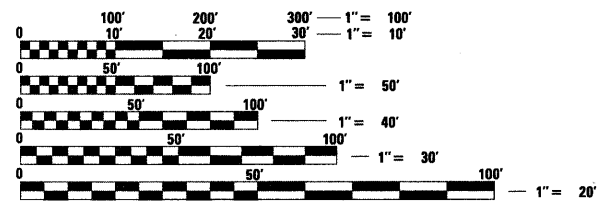
TRAFFIC DATA

US 60 /62 TRAFFIC DATA

2009 ADT = 3500
23% TRUCKS

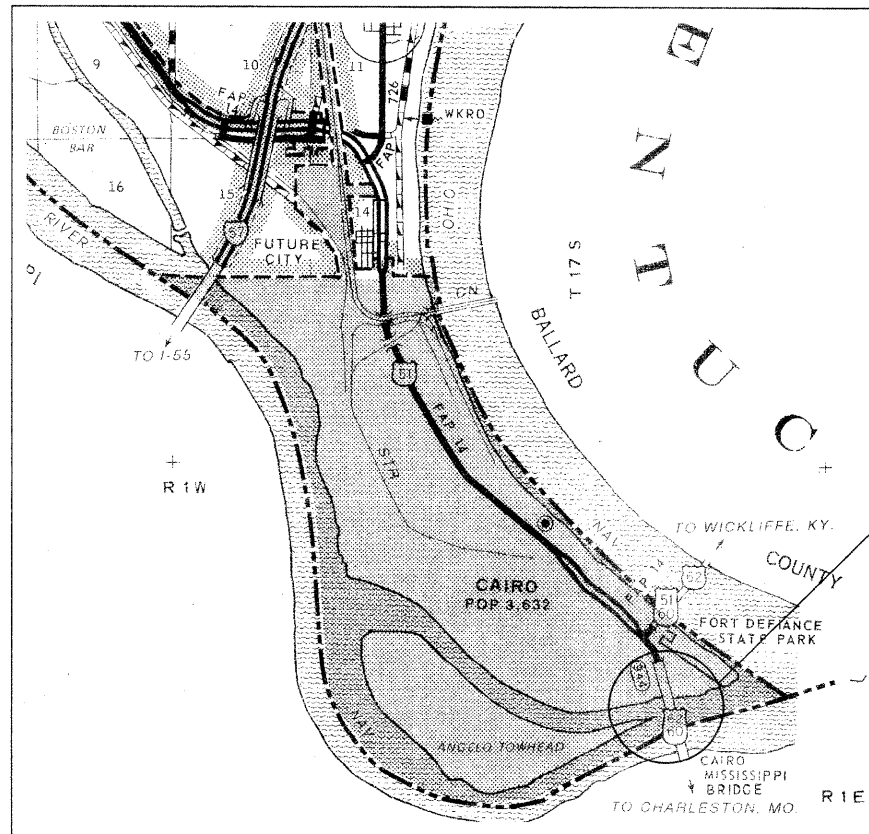
TOWNSHIPS:

ROAD DISTRICT NO. 2



FULL SIZE PLANS HAVE BEEN PREPARED USING STANDARD ENGINEERING SCALES. REDUCED SIZED PLANS WILL NOT CONFORM TO STANDARD SCALES. IN MAKING MEASUREMENTS ON REDUCED PLANS, THE ABOVE SCALES MAY BE USED.

J.U.L.I.E.
JOINT UTILITY LOCATION INFORMATION FOR EXCAVATION
1-800-892-0123
OR 811



NET LENGTH = 5177 FT.

EXISTING STRUCTURE NO. 002-0005
FAS 944 (US 60 /62)

STATE OF ILLINOIS
DEPARTMENT OF TRANSPORTATION
DIVISION OF HIGHWAYS

SUBMITTED Feb 18 20 11
M. C. Adams
DEPUTY DIRECTOR OF HIGHWAYS, REGION ENGINEER

March 05 20 11
Scott E. Stitt, P.E.
Acting ENGINEER OF DESIGN AND ENVIRONMENT

March 05 20 11
Christine M. Reed
DIRECTOR OF HIGHWAYS, CHIEF ENGINEER

**PRINTED BY THE AUTHORITY
OF THE STATE OF ILLINOIS**

PROJECT ENGINEER T. WAYNE HALSTEAD (618)351-5228
PROJECT MANAGER DAVID PICHE (618)351-5227

CONTRACT NO. 78250