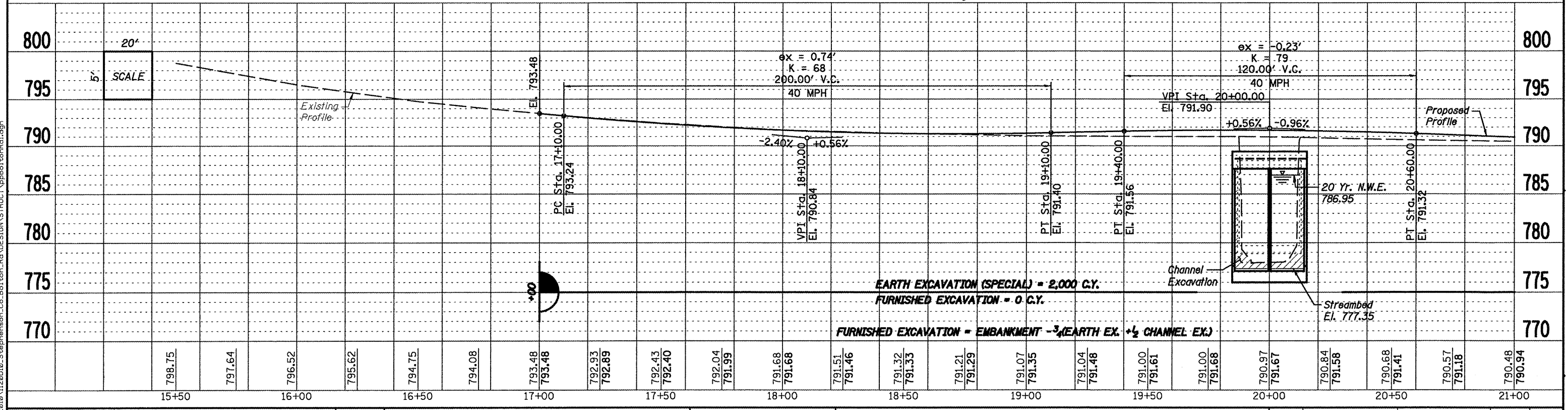
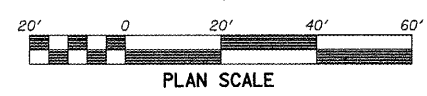
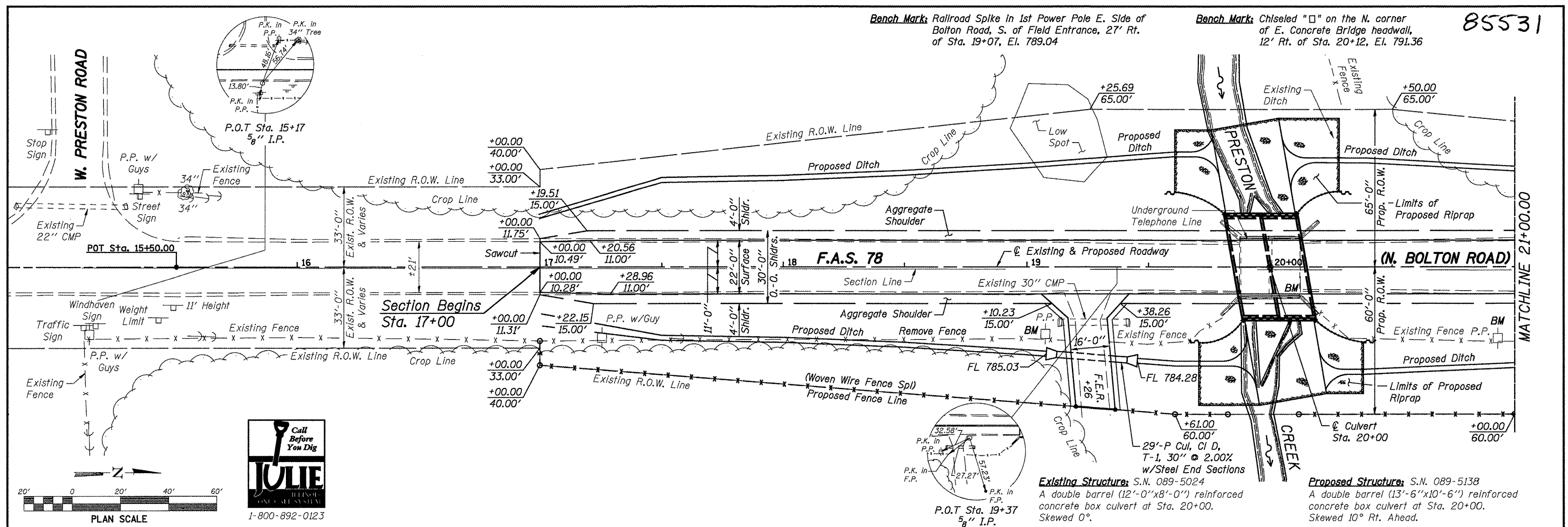


85531

Bench Mark: Railroad Spike in 1st Power Pole E. Side of Bolton Road, S. of Field Entrance, 27' Rt. of Sta. 19+07, El. 789.04

Bench Mark: Chiseled "□" on the N. corner of E. Concrete Bridge headwall, 12' Rt. of Sta. 20+12, El. 791.36



REV.	DATE	BY	REMARKS

**STEPHENSON COUNTY  
CULVERT REPLACEMENT  
F.A.S. 78 (N. BOLTON ROAD) OVER PRESTON CREEK  
2010**

**WILLET, HOFMANN & ASSOCIATES, INC.**  
CONSULTING ENGINEERS  
Land Surveying - Transportation - Structures  
Environmental - Architecture  
808 East Second Street Dixon, Illinois 61021  
Phone 815.284.3381 Fax 815.284.3385  
Design Firm #164-00018  
www.willett-hofmann.com

**PLAN & PROFILE**

ROUTE NO.	SECTION	COUNTY	TOTAL SHEETS	SHEET NO.
F.A.S. 78	10-06118-00-BR	Stephenson	18	6
STA. 15+50.00 - STA. 21+00.00				
FED. ROAD DIST. NO. 7 ILLINOIS FED. AID PROJECT ER-0177(03B)				