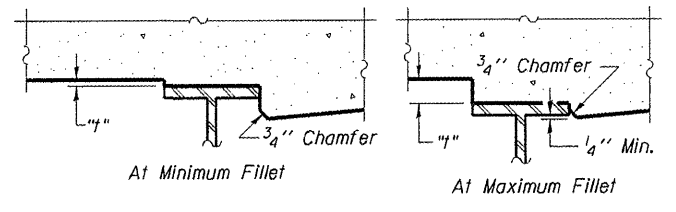


DEAD LOAD DEFLECTION DIAGRAM
(Includes weight of concrete only.)

Note:
The above deflections are not to be used in the field if the engineer is working from the grade elevations adjusted for dead load deflections as shown below.



To determine "f": After all structural steel has been erected, elevations of the top flanges of the beams shall be taken at intervals shown below. These elevations subtracted from the "Theoretical Grade Elevations Adjusted for Dead Load Deflection" shown below, minus slab thickness, equals the fillet heights "f" above top flange of beams.

FILLET HEIGHTS

BEAM 1

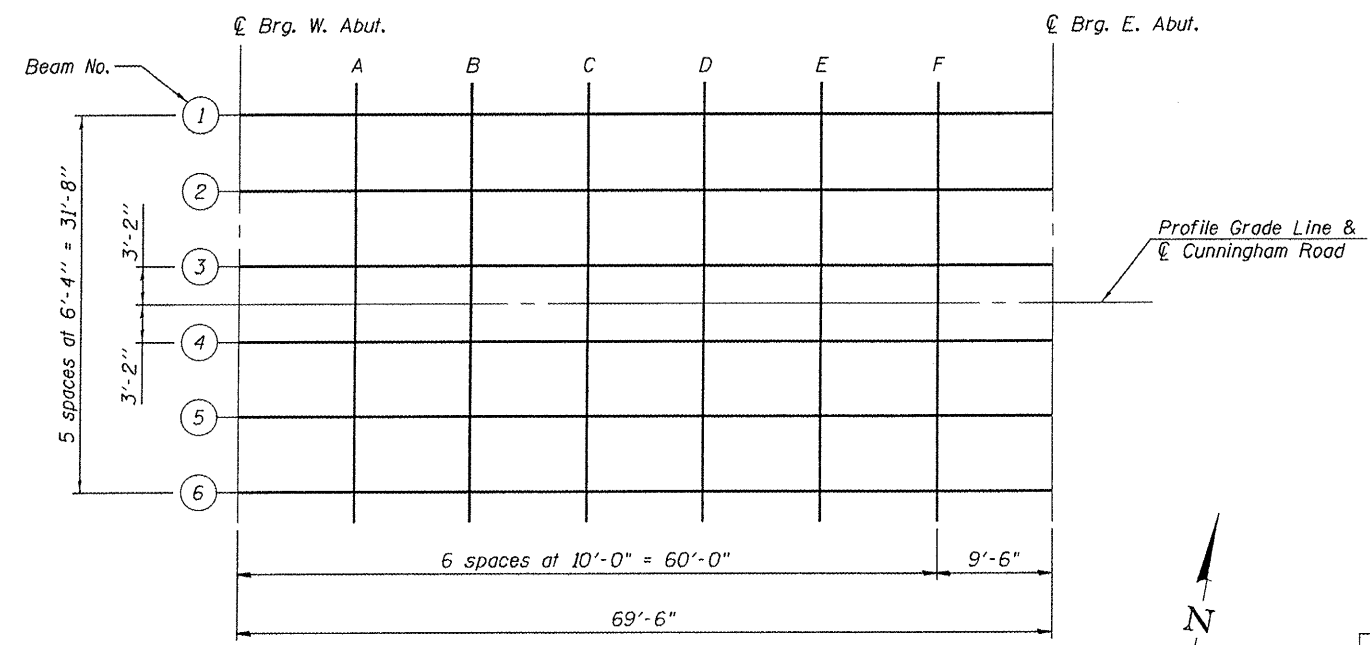
Location	Station	Offset	Theoretical Grade Elevations	Theoretical Grade Elevations Adjusted For Dead Load Deflection
Bk. W. Abut	306+42.50	-15.833	736.719	736.719
CL Brg. W. Abut.	306+43.75	-15.833	736.691	736.691
A	306+53.75	-15.833	736.468	736.526
B	306+63.75	-15.833	736.253	736.357
C	306+73.75	-15.833	736.046	736.174
D	306+83.75	-15.833	735.848	735.975
E	306+93.75	-15.833	735.657	735.759
F	307+03.75	-15.833	735.474	735.530
CL Brg. E. Abut.	307+13.25	-15.833	735.308	735.308
Bk. E. Abut	307+14.50	-15.833	735.287	735.287

BEAM 2

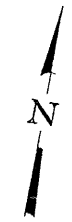
Location	Station	Offset	Theoretical Grade Elevations	Theoretical Grade Elevations Adjusted For Dead Load Deflection
Bk. W. Abut	306+42.50	-9.5	736.846	736.846
CL Brg. W. Abut.	306+43.75	-9.5	736.817	736.817
A	306+53.75	-9.5	736.594	736.649
B	306+63.75	-9.5	736.380	736.477
C	306+73.75	-9.5	736.173	736.294
D	306+83.75	-9.5	735.974	736.094
E	306+93.75	-9.5	735.784	735.879
F	307+03.75	-9.5	735.601	735.653
CL Brg. E. Abut.	307+13.25	-9.5	735.435	735.435
Bk. E. Abut	307+14.50	-9.5	735.414	735.414

BEAM 3

Location	Station	Offset	Theoretical Grade Elevations	Theoretical Grade Elevations Adjusted For Dead Load Deflection
Bk. W. Abut	306+42.50	-3.167	736.972	736.972
CL Brg. W. Abut.	306+43.75	-3.167	736.944	736.944
A	306+53.75	-3.167	736.721	736.776
B	306+63.75	-3.167	736.506	736.604
C	306+73.75	-3.167	736.300	736.420
D	306+83.75	-3.167	736.101	736.221
E	306+93.75	-3.167	735.910	736.006
F	307+03.75	-3.167	735.728	735.780
CL Brg. E. Abut.	307+13.25	-3.167	735.562	735.562
Bk. E. Abut	307+14.50	-3.167	735.540	735.540



DIAGRAMMATIC PLAN - TOP OF CONCRETE ELEVATIONS



**TOP OF SLAB ELEVATIONS
STRUCTURE NUMBER 101-3101**

02/01/2011
 I:\010106\101005\CADD\Struct\Sheets\101-3101.dgn
 LAYOUT: JKR 12/20/10
 DRAWN: MCM 1/14/11
 REVIEWED: SMK 1/14/11

PROFESSIONAL DESIGN FIRM LICENSE #184-001084 © Copyright Hanson Professional Services Inc.		SHEET NO. 3 12 SHEETS	F.A.U. RTE. 5077	SECTION 10-00462-00-BR	COUNTY Winnebago	TOTAL SHEETS 21	SHEET NO. 10
Hanson Professional Services Inc.		DATE 2/3/11	CONTRACT NO. 85534				
FED. ROAD DIST. NO. 2 ILLINOIS FED. AID PROJECT							