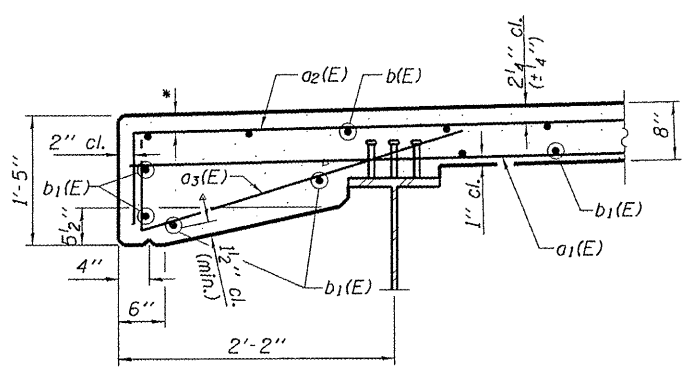
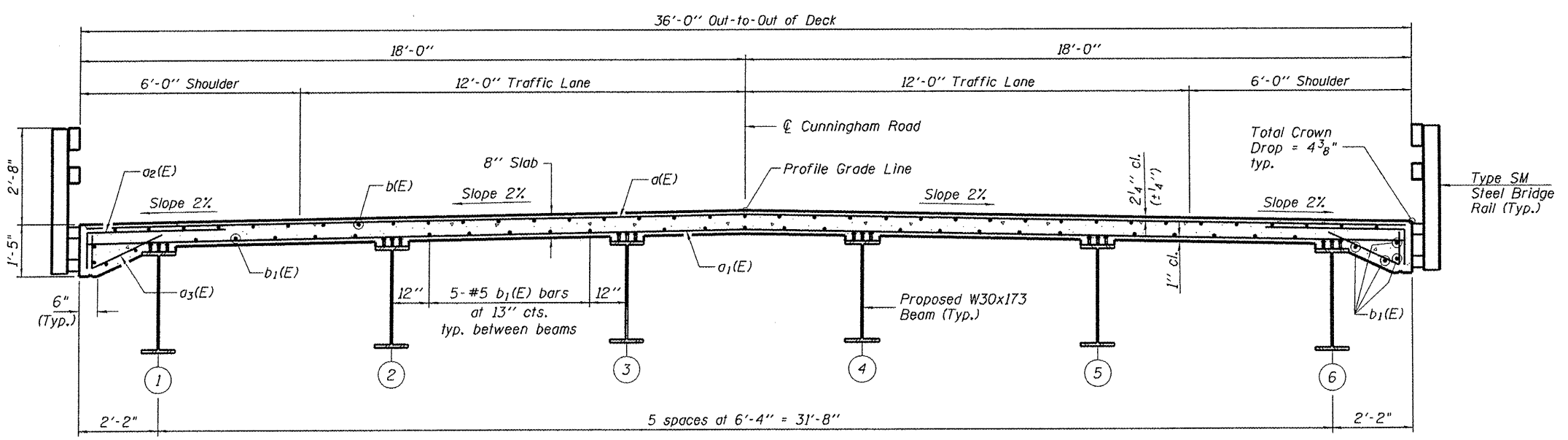


PLAN



SECTION THRU EDGE OF SLAB

* Reinforcement bars in the top deck may be placed with a 1/2 inch minimum clearance in the area of the rail post anchor devices. The studs of the anchor devices shall be placed below the top reinforcement bars and the outermost longitudinal reinforcement bar shall be placed directly above the studs of the rail post anchor device.



CROSS SECTION
(Looking East)

Notes:
See Sheet 6 of 12 for diaphragm details, bar details and Bill of Material.
Bars indicated thus 20 x 3-#5 etc. indicates 20 lines of bars with 3 lengths per line.

SUPERSTRUCTURE
STRUCTURE NUMBER 101-3101

02/04/2011
 I:\010462\10-00462-CADD\Struct\Sheet\5-005-Superstr.dgn
 LAYOUT
 JWR 12/20/10
 MCM 1/17/11
 SWK 1/17/11
 DRAWN
 REVIEWED

PROFESSIONAL DESIGN FIRM LICENSE #184-001084 © Copyright Hanson Professional Services Inc.		SHEET NO. 5 12 SHEETS	F.A.U. RTE. 5077	SECTION 10-00462-00-BR	COUNTY Winnebago	TOTAL SHEETS 21	SHEET NO. 12
Hanson Professional Services Inc.		DATE 2/3/11	CONTRACT NO. 85534				
		FED. ROAD DIST. NO. 2 ILLINOIS FED. AID PROJECT					