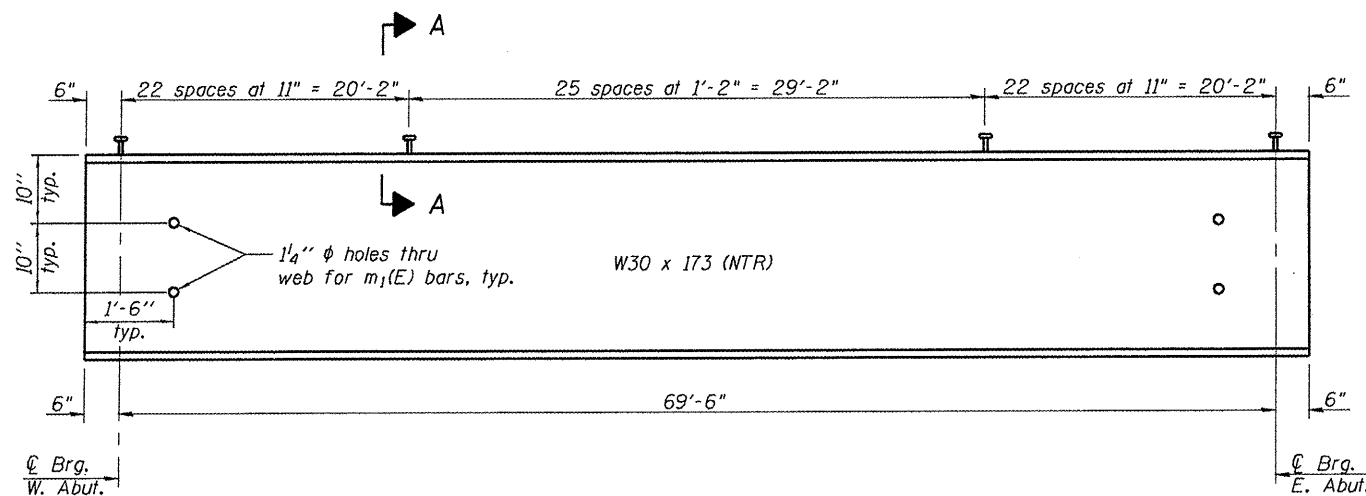
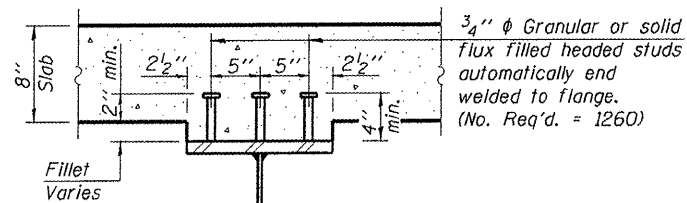


FRAMING PLAN



BEAM ELEVATION
(Looking North)

Notes:
 Load carrying components designated "NTR" shall conform to the Supplemental Requirements for Notch Toughness, Zone 2.
 All diaphragms shall be installed as steel is erected and secured with erection pins and bolts.
 See sheet B of 12 for Diaphragm Details.



SECTION A-A

02/04/2011
 I:\0000000054-CADD-Struct\Sheet\85534-S11.dgn
 LAYOUT 12/20/10
 DRAWN MGN 1/14/11
 REVIEWED SHK 1/14/11

PROFESSIONAL DESIGN FIRM LICENSE #184-001084 © Copyright Hanson Professional Services Inc.		JOB NO. 10L0054	SHEET NO. 7 12 SHEETS	F.A.U. RTE. 5077	SECTION 10-00462-00-BR	COUNTY Winnebago	TOTAL SHEETS 21	SHEET NO. 14
		DATE 2/3/11	CONTRACT NO. 85534	FED. ROAD DIST. NO. 2 ILLINOIS FED. AID PROJECT				