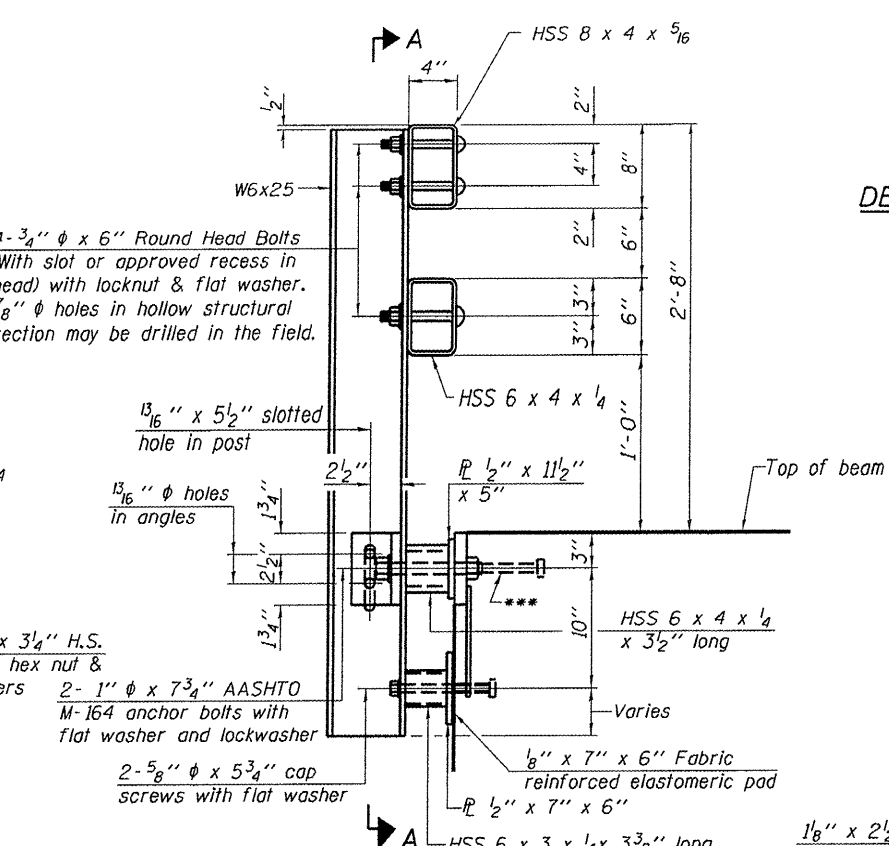
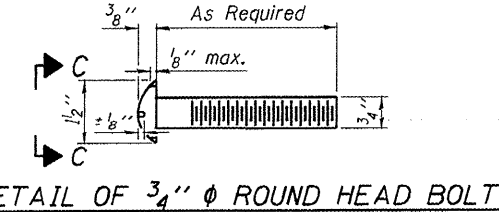


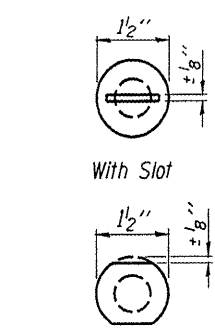
SECTION A-A



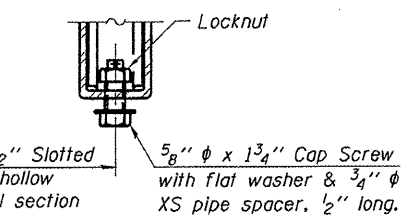
SECTION AT RAIL POST



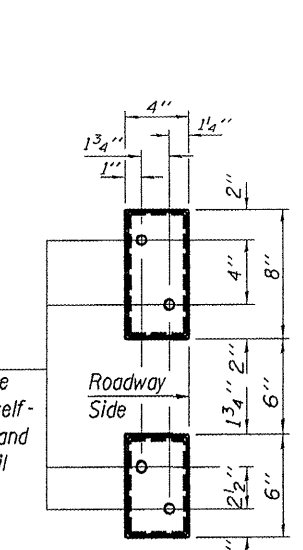
DETAIL OF 3/4"  $\phi$  ROUND HEAD BOLT



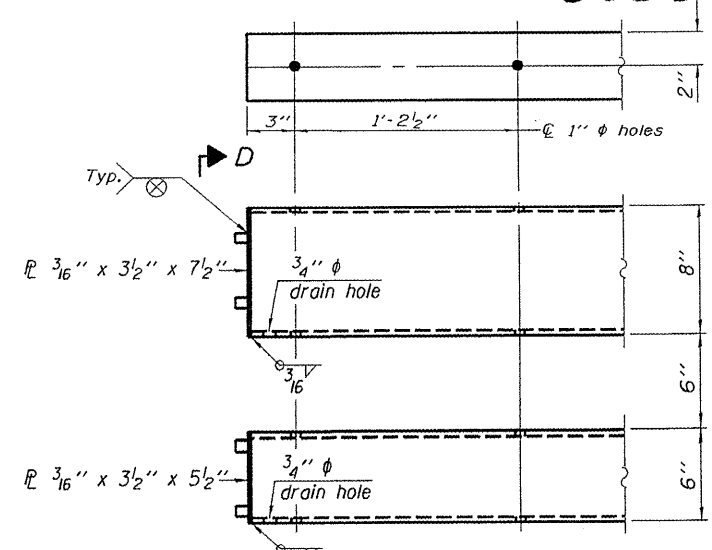
VIEW C-C



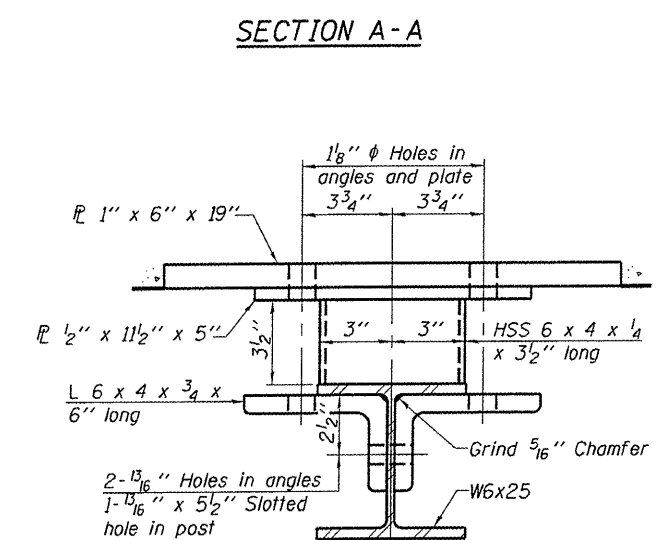
RAIL SPLICE CONNECTION AT EXPANSION JT.



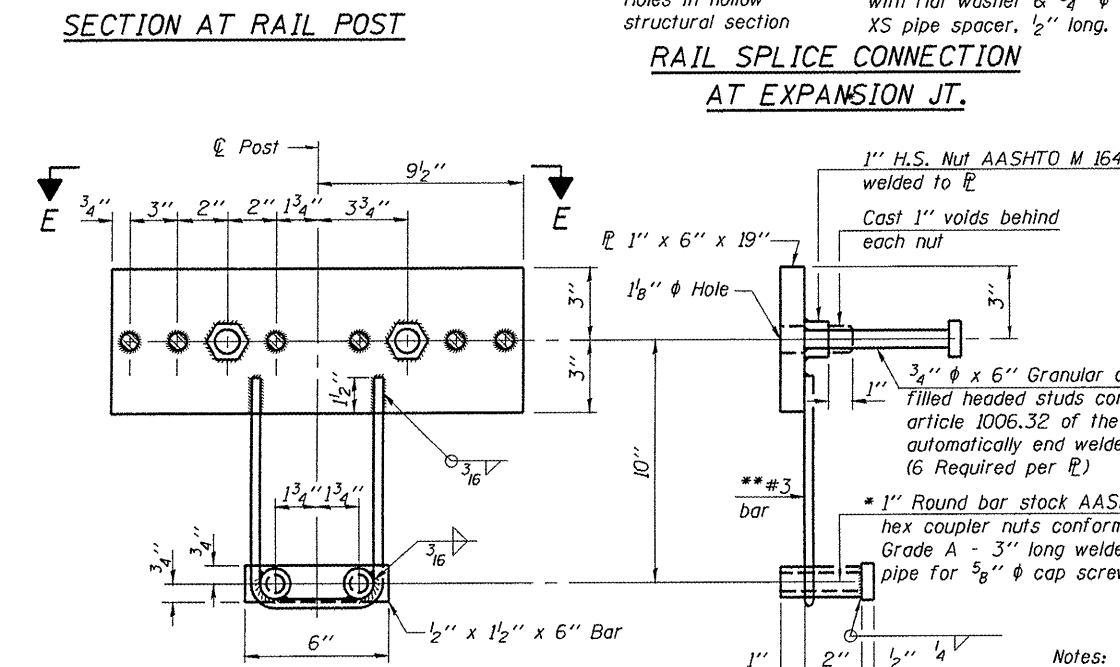
VIEW D-D



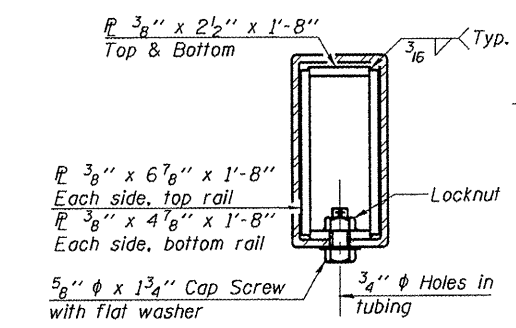
END OF RAIL DETAILS



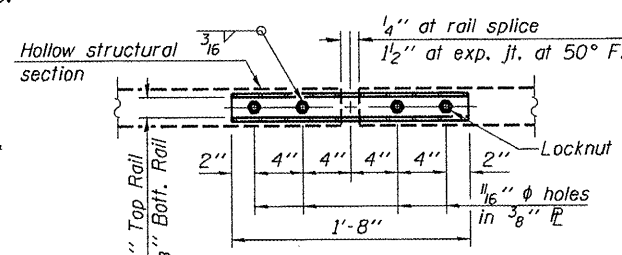
SECTION B-B



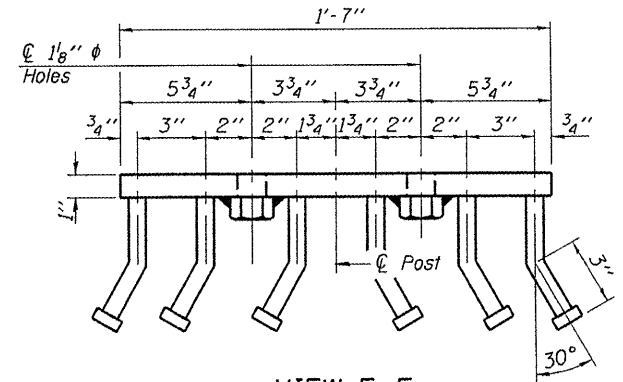
ANCHOR DEVICE



SECTION AT RAIL SPLICE



PLAN-BOTT. SPLICE P TYPICAL



VIEW E-E

Notes:  
 All field drilled holes shall be coated with an approved zinc rich paint before erection.  
 For multi-span bridges, sufficient 1/4" x 6" x 1'-2" galvanized steel shims shall be provided to align rail between adjacent spans. Cost included with Steel Railing, Type SM.  
 All steel rail members shall be galvanized according to Article 509.05 of the Standard Specifications.  
 \*\*\* The studs of the anchor devices shall be placed below the top reinforcement bars and the outermost longitudinal reinforcement bar shall be placed directly above the studs of the rail post anchor device.

BILL OF MATERIAL

Item	Unit	Quantity
Steel Railing, Type SM	Foot	141

STEEL RAILING, TYPE SM  
 STRUCTURE NUMBER 101-3101

PROFESSIONAL DESIGN FIRM LICENSE #184-001084

© Copyright Hanson Professional Services Inc. Hanson Professional Services Inc.	JOB NO. 10L0054 DATE 2/3/11	SHEET NO. 9 12 SHEETS	F.A.U. RTE. 5077 SECTION 10-00462-00-BR	COUNTY Winnebago	TOTAL SHEETS 21 SHEET NO. 16
	CONTRACT NO. 85534			FED. ROAD DIST. NO. 2 ILLINOIS FED. AID PROJECT	

02-01-2011  
 I:\0010054\CADD\Structural\Sheet\101-3101\_Rail.dgn  
 JMR 12/20/10  
 MGN 1/14/11  
 SHK 1/14/11  
 LAYOUT  
 DRAWN  
 REVIEWED