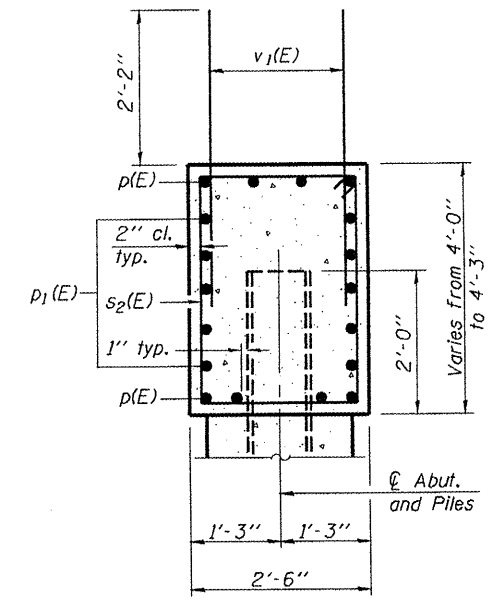
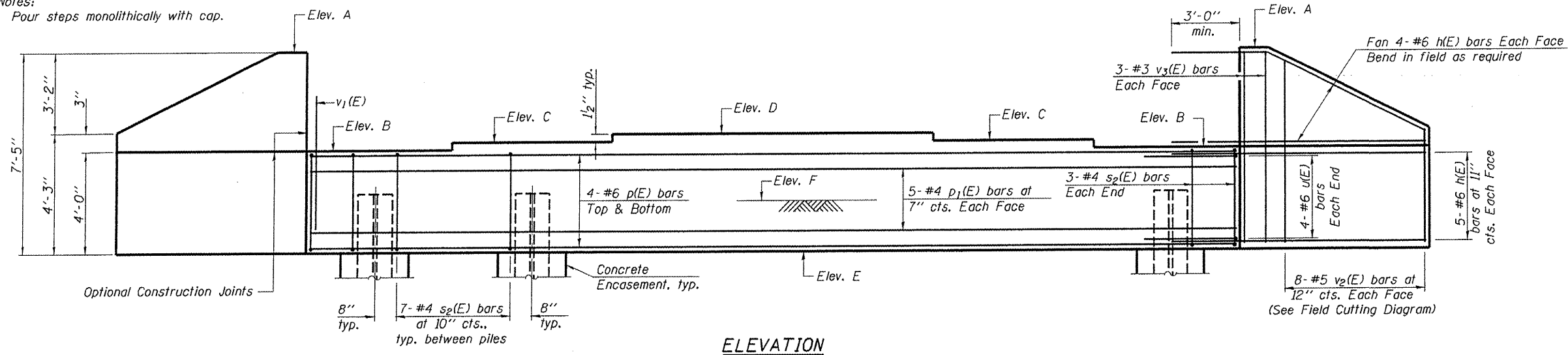


85534

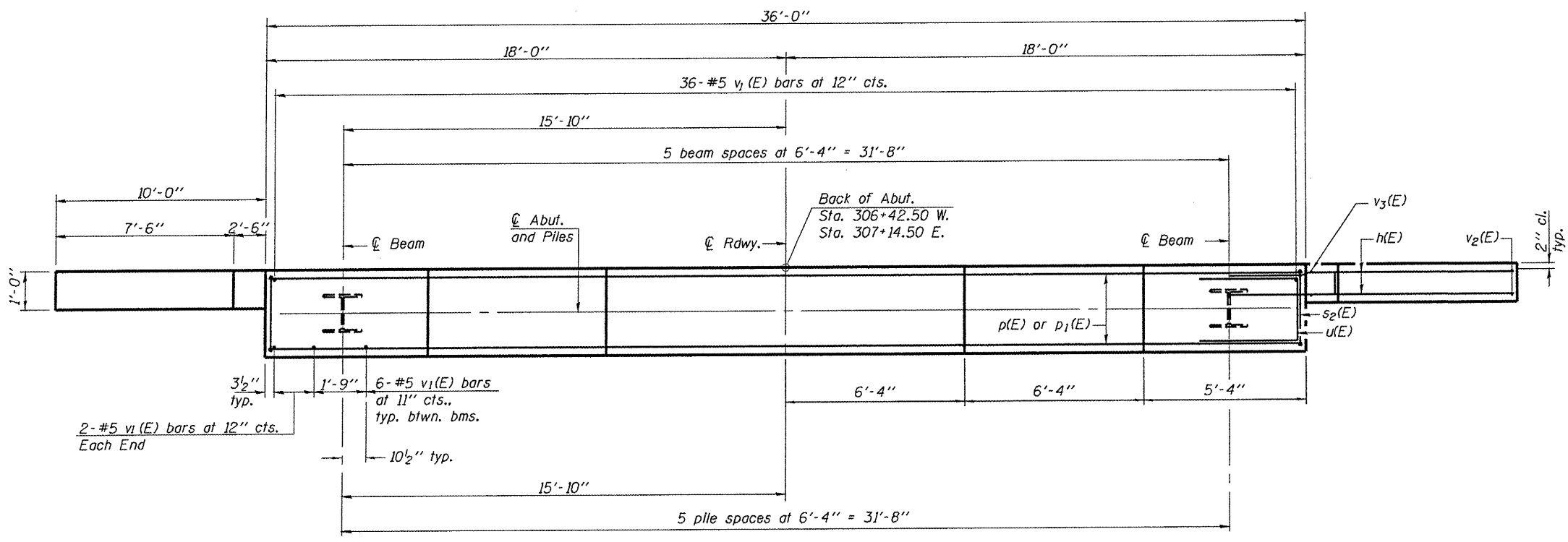
Notes:
Pour steps monolithically with cap.



**BILL OF MATERIAL
(TWO ABUTS)**

Bar	No.	Size	Length	Shape
h(E)	72	#6	13'-6"	—
p(E)	16	#6	35'-8"	—
p ₁ (E)	20	#4	35'-8"	—
s ₂ (E)	82	#4	12'-5"	□
u(E)	16	#6	10'-1"	—
v ₁ (E)	140	#5	4'-4"	—
v ₂ (E)	32	#5	10'-1"	—
v ₃ (E)	24	#5	7'-1"	—
Structure Excavation		Cu. Yd.	153	
Concrete Structures		Cu. Yd.	36.8	
Reinforcement Bars, Epoxy Coated		Pound	4860	
Furnishing Steel Piles, HP12x63		Foot	405	
Driving Piles		Foot	405	
Test Pile, HP12x63		Each	2	
Concrete Encasement		Cu. Yd.	4.2	
Pile Shoes		Each	10	

For details of piles and Concrete Encasement, see sheet 11 of 12.

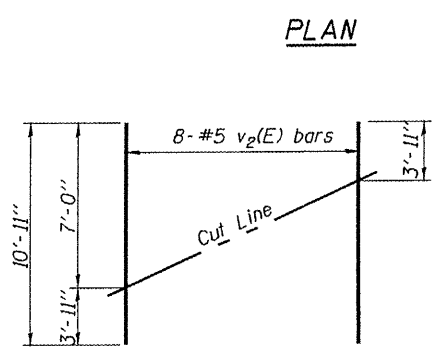


PILE DATA

Type: HP12x63
Nominal Required Bearing: 490k
Factored Resistance Available: 270k
Est. Length: 40'-W. Abut.; 41'-E. Abut.
No. Production Piles: 10 (5 each abut.)
No. Test Piles: 2 (1 each abut.)

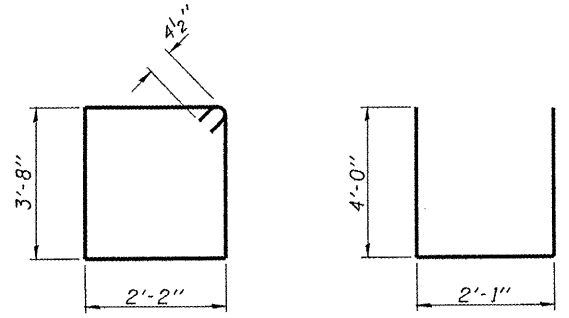
TABLE OF ELEVATIONS

LOCATION	WEST ABUT.	EAST ABUT.
A	736.65	735.27
B	733.23	731.85
C	733.35	731.97
D	733.48	732.10
E	729.23	727.85
F	731.5	730.3



FIELD CUTTING DIAGRAM

Order v₂(E) full length. Cut as shown and use remainder of bars in opposite face.



ABUTMENTS

STRUCTURE NUMBER 101-3101

PROFESSIONAL DESIGN FIRM LICENSE #184-001084
© Copyright Hanson Professional Services Inc.

HANSON
Hanson Professional Services Inc.

JOB NO. 10L0054
DATE 2/3/11

SHEET NO. 10
12 SHEETS

F.A.U. RTE.	SECTION	COUNTY	TOTAL SHEETS	SHEET NO.
5077	10-00462-00-BR	Winnebago	21	17

CONTRACT NO. 85534
FED. ROAD DIST. NO. 2 ILLINOIS FED. AID PROJECT

02/01/2011
 I:\01005\10L0054\ACAD\Drawings\Struct\Sheet\AS-010-abutments.dgn
 LAYOUT: JKR 12/20/10
 DRAWN: MDM 1/14/11
 REVIEWED: SKK 1/14/11