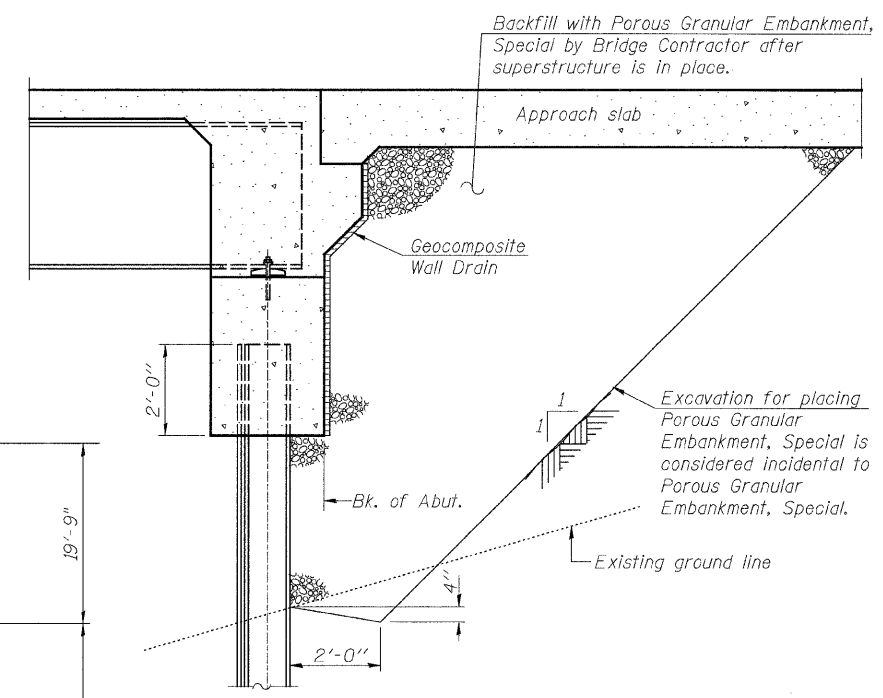
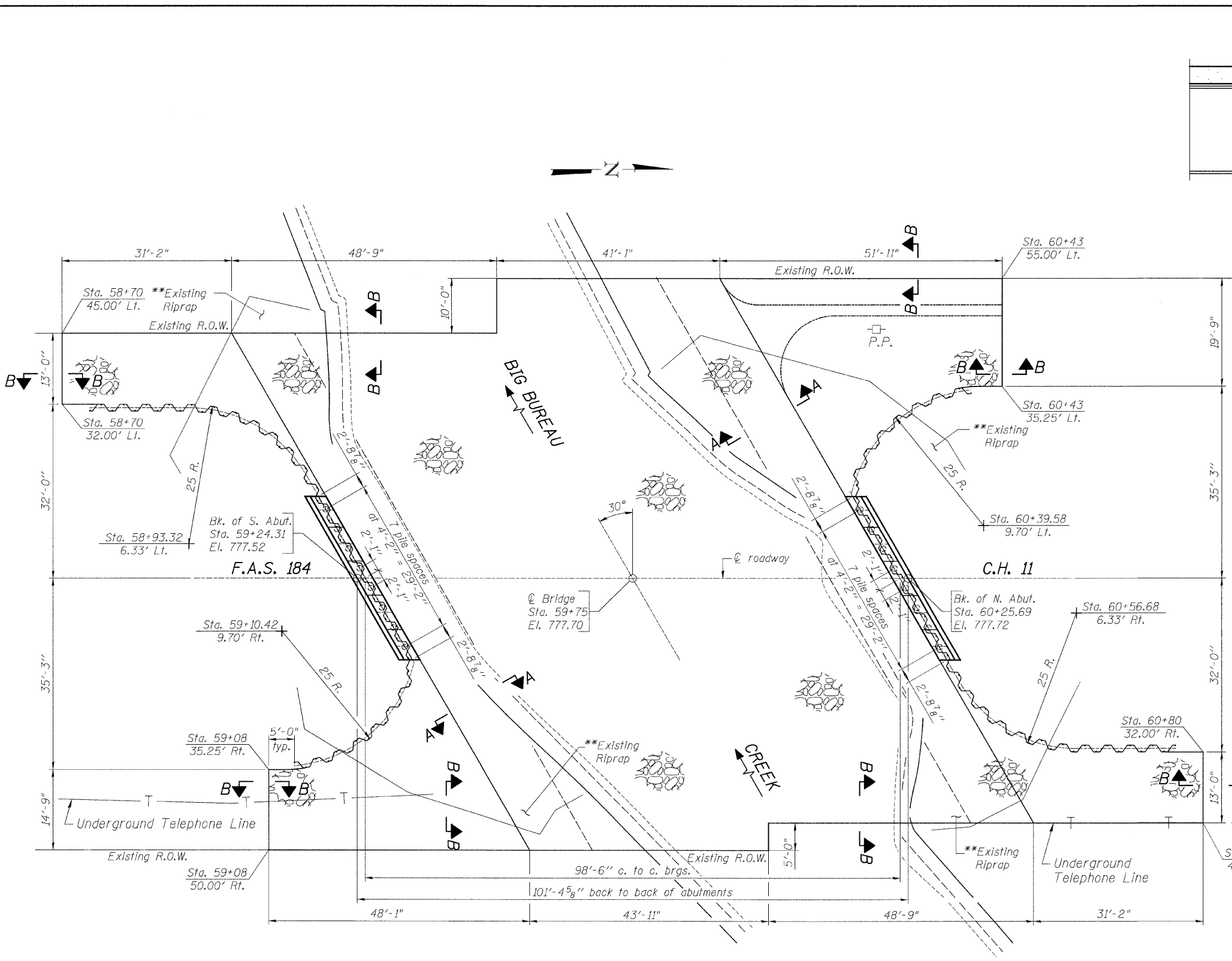
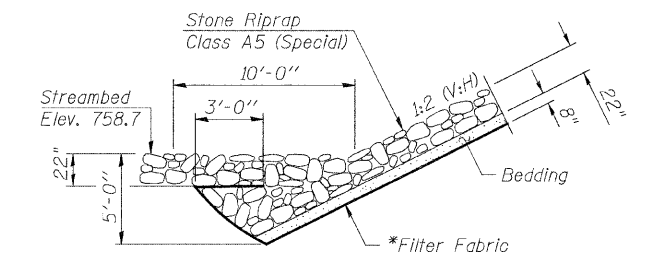


FILE NAME = S:\PROJECTS\2010\1051D10_Bureau_CH11\DESIGN\STRUCT\Drawings\1051D10\br.prapDetails.dgn

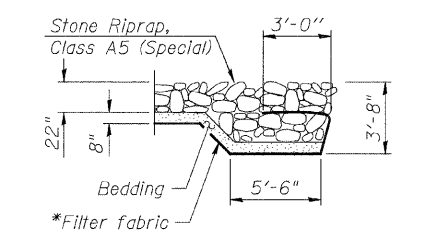


SECTION THRU INTEGRAL ABUTMENT

(Horiz. dim. @ Rt. L's)
 Note: All drainage system components shall extend 2'-0" beyond end of caps and around corners to intersect with sheeting.



SECTION A-A



SECTION B-B

NOTE
 Geocomposite wall drain shall wrap around corners of cap to intersect with sheeting.
 Porous Granular Embankment, Special shall extend 2'-0" beyond end of cap.
 *Included in the cost of Stone Riprap, A5 (Special).
 **Existing riprap to be removed and delivered to the Bureau County Highway Department yard.

BILL OF MATERIAL

ITEM	UNIT	QUANTITY
Stone Riprap, Class A5 (Special)	Ton	1,570

USER NAME =	DESIGNED - M. C. WAGNER	REVISED -
PLOT SCALE =	CHECKED - B. K. CONVERSE	REVISED -
PLOT DATE =	DRAWN - F. D. LACHAT	REVISED -
	CHECKED - M. A. CACKLEY	REVISED -

BUREAU COUNTY
F.A.S. 184 (C.H. 11) OVER BIG BUREAU CREEK
STATION 59 + 75

RIPRAP AND PILE LAYOUT
STRUCTURE NO. 006-3032
 STRUCTURAL SHEET NO. 2 OF 17 SHEETS

F.A.S. RTE. 184	SECTION 08-00211-00-BR	COUNTY BUREAU	TOTAL SHEETS 31	SHEET NO. 11
WHA# 1051D10		CONTRACT NO. 87462		
ILLINOIS FED. AID PROJECT BRS-0184(107)				