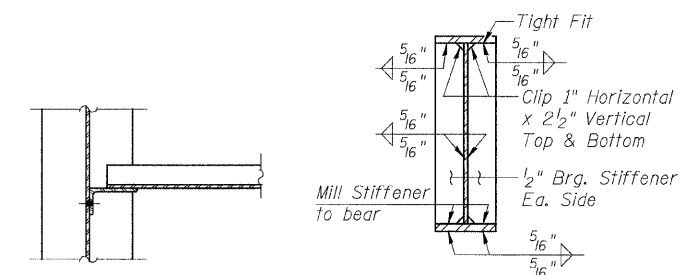
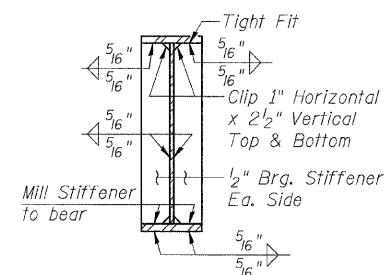


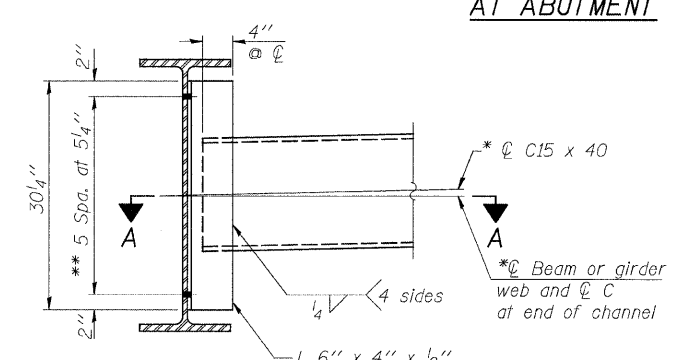
PLAN



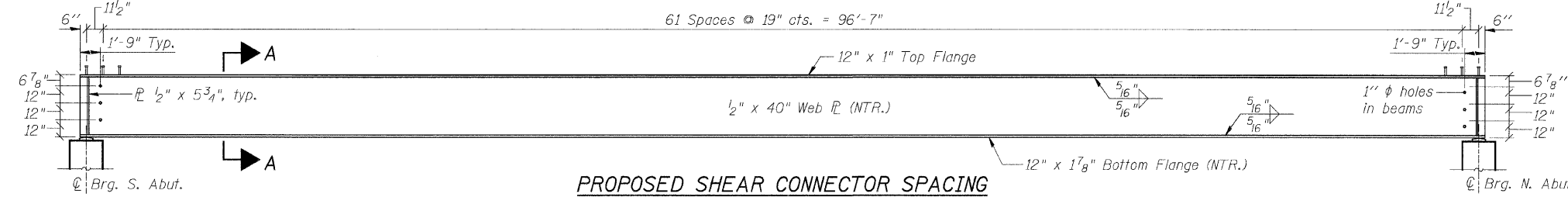
SECTION A-A



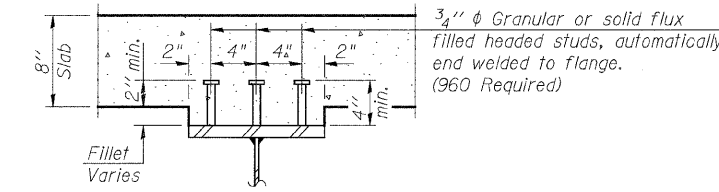
SECTION AT ABUTMENT



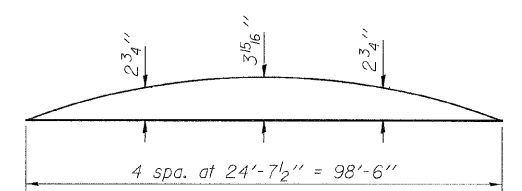
INTERIOR DIAPHRAGM



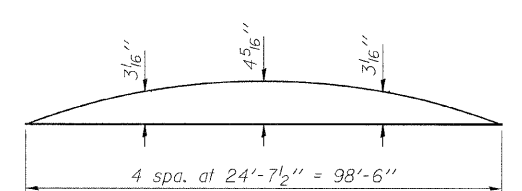
PROPOSED SHEAR CONNECTOR SPACING



SECTION A-A



CAMBER DIAGRAM (Interior Beams)



CAMBER DIAGRAM (Exterior Beams)

INTERIOR & EXTERIOR GIRDER MOMENT TABLE		
	Interior Center of Span	Exterior Center of Span
I_s	(in ⁴) 16,651	16,651
$I_c(n)$	(in ⁴) 42,452	41,205
$I_c(3n)$	(in ⁴) 30,165	29,173
S_s	(in ³) 938	938
$S_c(n)$	(in ³) 1,257	1,248
$S_c(3n)$	(in ³) 1,152	1,141
Z	(in ³)	
DC1	(k') 0.872	0.954
M _{DC1}	(k) 1,058	1,157
DC2	(k') 0.040	0.040
M _{DC2}	(k) 49	49
DW	(k') 0.313	0.281
M _{DW}	(k) 380	341
$M_{\frac{1}{2} + Imp}$	(k) 1,436	1,494
M_u (Strength I)	(k) 4,465	4,633
$\phi_r M_n$	(k) 6,036	5,958
f_s DC1	(ksi) 13.5	14.8
f_s DC2	(ksi) 0.5	0.5
f_s DW	(ksi) 4.0	3.6
f_s 1.3(I+I)	(ksi) 17.8	18.6
f_s (Service II)	(ksi) 35.8	37.5
f_s (Total)(Strength I)	(ksi) 47.5	49.6
V_r	(k) 28.3	30.0

TOP OF WEB ELEVATIONS (FOR FABRICATORS USE ONLY)					
BEAM NUMBER	☉ Brg. South Abutment	0.25 Pt.	0.50 Pt.	0.75 Pt.	☉ Brg. North Abutment
1	776.324	776.694	776.876	776.814	776.564
2	776.468	776.807	776.978	776.916	776.687
3	776.612	776.945	777.111	777.043	776.809
4	776.504	776.832	776.993	776.920	776.680
5	776.396	776.744	776.905	776.821	776.550

INTERIOR & EXTERIOR GIRDER REACTION TABLE HL93 Loading		
	Interior at Abutment	Exterior at Abutment
R _{DC1}	(k) 42.9	47.0
R _{DC2}	(k) 2.0	2.0
R _{DW}	(k) 15.4	13.8
R _{$\frac{1}{2} + Imp$}	(k) 90.2	77.3
R _{Total}	(k) 150.5	140.1

NOTES:

All diaphragms shall be installed as steel is erected and secured with erection pins and bolts except as otherwise noted. Individual or diaphragms at supports may be temporarily disconnected to install bearing anchor rods. Load carrying components designated "NTR" shall conform to the Supplemental Requirements for Notch Toughness, Zone 2.

FILE NAME = S:\PROJECTS\2010\1051D10\Bureau\CH11\DESIGN\STRUCT\Drawings\1051D10\FramingPlan.dgn

USER NAME =	DESIGNED - M. C. WAGNER	REVISED -
PLOT SCALE =	CHECKED - B. K. CONVERSE	REVISED -
PLOT DATE =	DRAWN - F. D. LACHAT	REVISED -
	CHECKED - M. A. CACKLEY	REVISED -

BUREAU COUNTY
F.A.S. 184 (C.H. 11) OVER BIG BUREAU CREEK
STATION 59 + 75

FRAMING PLAN
STRUCTURE NO. 006-3032
STRUCTURAL SHEET NO. 6 OF 17 SHEETS

F.A.S. RTE. 184	SECTION 08-00211-00-BR	COUNTY BUREAU	TOTAL SHEETS 31	SHEET NO. 15
WHA# 1051D10		CONTRACT NO. 87462		
ILLINOIS FED. AID PROJECT BR5-0184(107)				