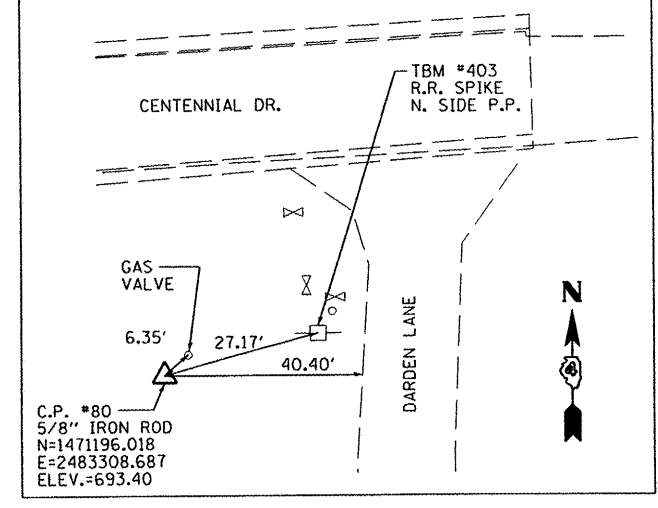
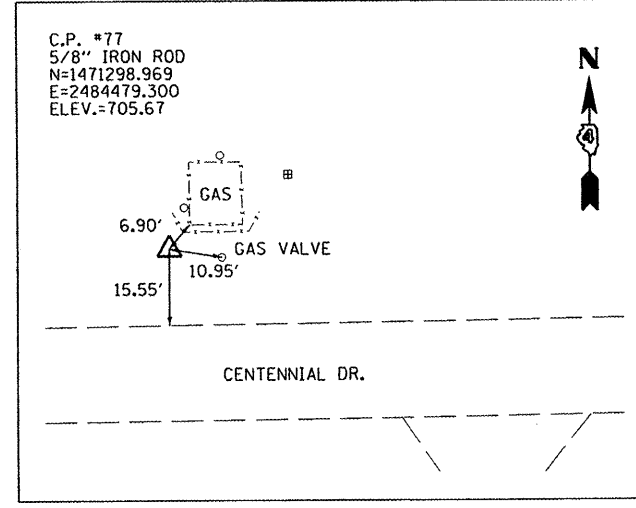
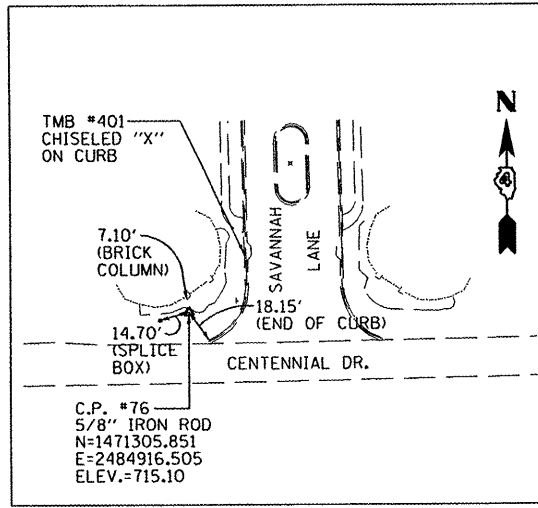
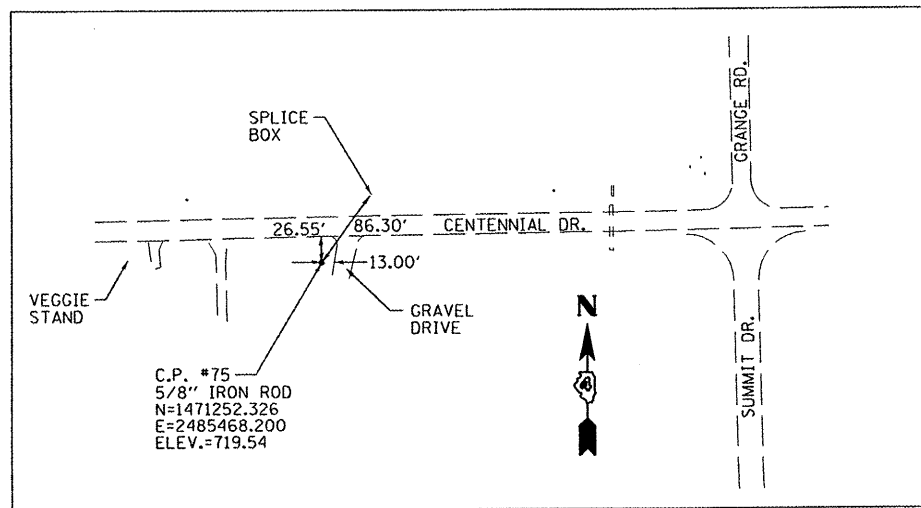
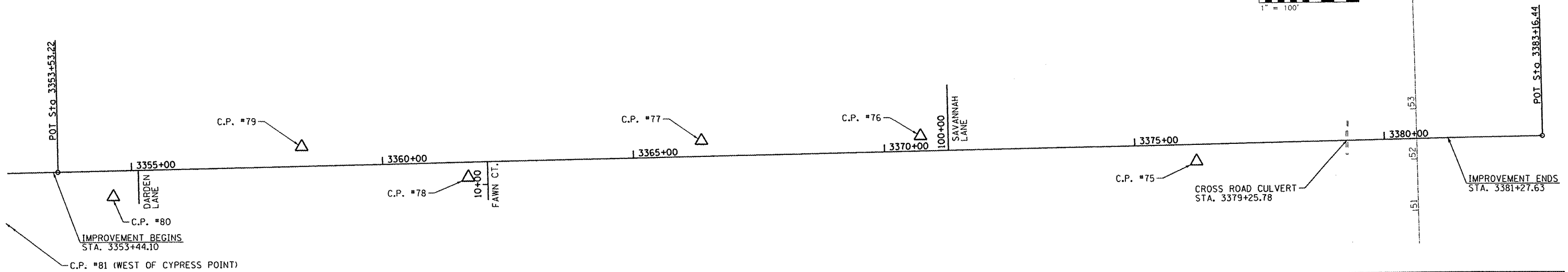
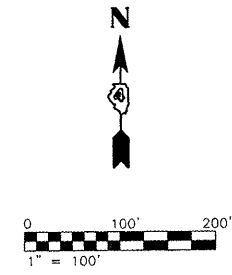


BENCHMARK INFORMATION

TBM #401: CHISELED "X" IN CONCRETE 2" SOUTH OF S.E. CORNER OF INLET ON WEST SIDE OF SAVANNAH LANE
ELEV. = 714.28

TBM #402: N. BOLT OF HYDRANT @ S.W. QUADRANT OF CENTENNIAL & CYPRESS POINT
ELEV. = 690.41

TBM #403: R.R. SPIKE N. SIDE OF POWER POLE IN S.W. QUADRANT OF CENTENNIAL & DARDEN LANE
ELEV. = 694.15



ALIGNMENT DATA FAU 6745 (CENTENNIAL DRIVE)

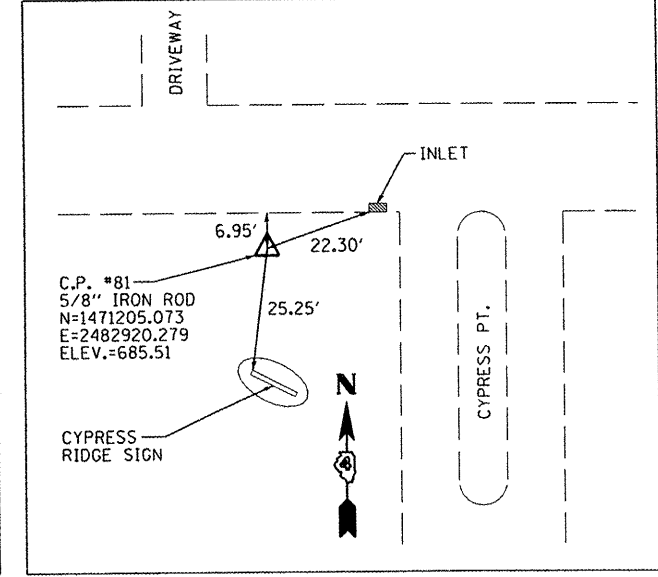
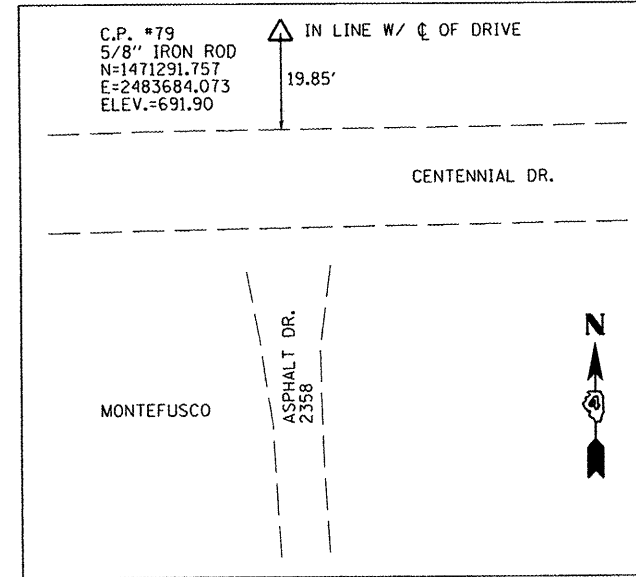
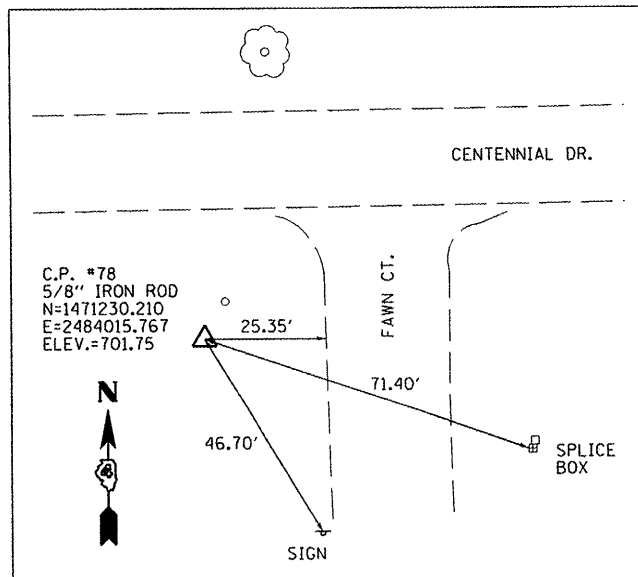
Chain PROPCL contains:

PROPCL1 PROPCL2 PROPCL3

Beginning chain PROPCL description

Point PROPCL1	N	1,471,203.1601	E	2,480,969.5006	Sta	3331+24.3800
Course from PROPCL1 to PROPCL2 88 33/64 56' 45.8062" Dist 2,228.8384						
Point PROPCL2	N	1,471,244.1568	E	2,483,197.9619	Sta	3353+53.2183
Course from PROPCL2 to PROPCL3 88 33/64 56' 51.4451" Dist 2,963.2177						
Point PROPCL3	N	1,471,298.5804	E	2,486,160.6798	Sta	3383+16.4360

Ending chain PROPCL description



FILE NAME: s:\237\2010\23710006 (CentennialDriveSegment)\WP\I\CADD\CADD Sheets\0489481-sht-ATB.dwg	USER NAME: rmbrodie	DESIGNED: BAB/RAW	REVISED:	MAURER & STUTZ, INC. ENGINEERS SURVEYORS	CENTENNIAL DRIVE PHASE IV ALIGNMENT, TIES, AND BENCHMARKS			F.A.U. RTE. 6745	SECTION 07-00130-03-PV	COUNTY TAZEWELL	TOTAL SHEETS 39	SHEET NO. 8	
PLOT SCALE: 1/8" = 1' IN.	CHECKED: RMB	REVISED:	SCALE:		SHEET NO. OF SHEETS	STA. TO STA.	CONTRACT NO. 89481						
PLOT DATE: 3/3/2011	DATE: 03/02/2011	REVISED:	ILLINOIS FED. AID PROJECT										