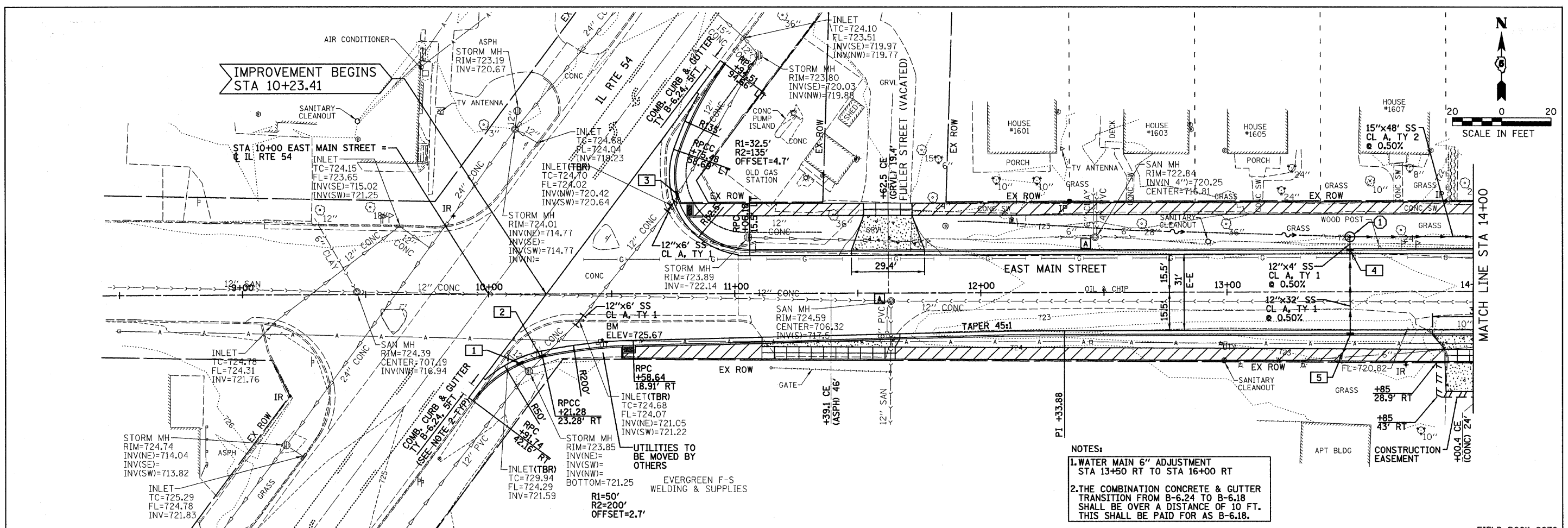
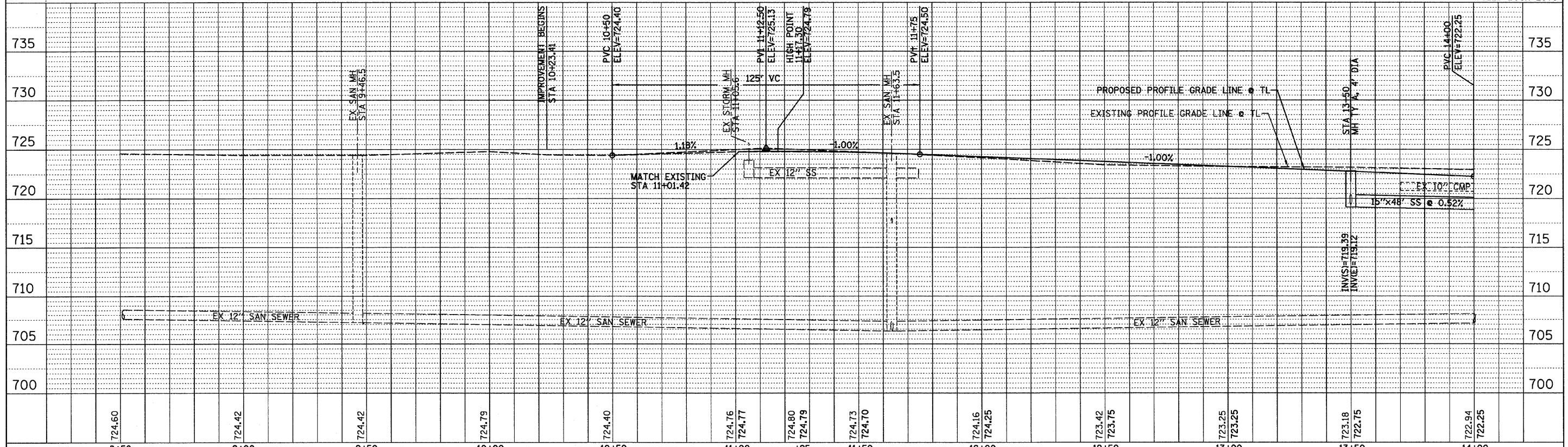


PLAN	DATE
BY	
REVISIONS	
NO.	
DATE	
BY	
REVISIONS	
NO.	
DATE	
BY	
REVISIONS	
NO.	
DATE	

PROFILE	DATE
BY	
REVISIONS	
NO.	
DATE	
BY	
REVISIONS	
NO.	
DATE	
BY	
REVISIONS	
NO.	
DATE	



- NOTES:**
1. WATER MAIN 6" ADJUSTMENT STA 13+50 RT TO STA 16+00 RT
 2. THE COMBINATION CONCRETE & GUTTER TRANSITION FROM B-6.24 TO B-6.18 SHALL BE OVER A DISTANCE OF 10 FT. THIS SHALL BE PAID FOR AS B-6.18.



DESIGNED - PJM/LAT	REVISED -	CITY OF CLINTON EAST MAIN STREET PLAN AND PROFILE SCALE: 1"=20' SHEET NO. 9 OF 28 SHEETS STA. 10+23.41 TO STA. 14+00.00	EAST MAIN STREET SECTION 00-00047-00-RP DeWITT, COUNTY F.A.I.L. 7311 SECTION 09-00047-00-RP COUNTY DeWITT TOTAL SHEETS 28 SHEET NO. 9 CONTRACT NO. 91432 FED. ROAD DIST. NO. ILLINOIS FED. AID PROJECT
DRAWN - DRR	REVISED -		
CHECKED - PJM	REVISED -		
DATE - 12/01/10	REVISED -		

FARNSWORTH GROUP, INC.

CONSULTING ENGINEERS - 2709 MCGRAW DRIVE BLOOMINGTON, ILLINOIS 61704 (309) 663-8435 / (309) 663-1571 FAX

24-8384