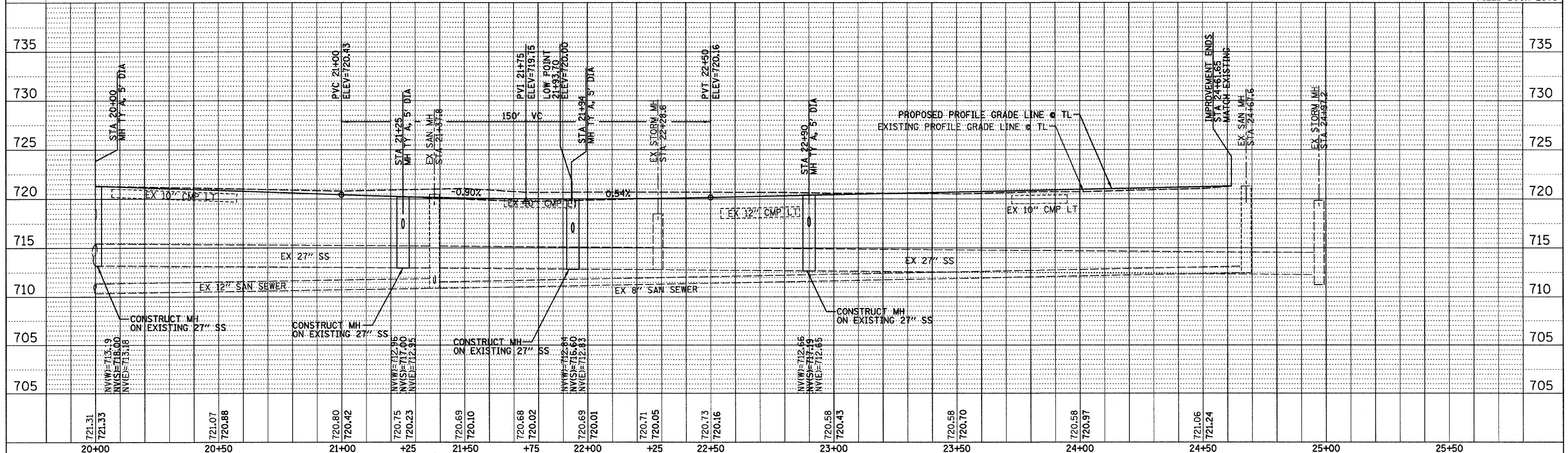
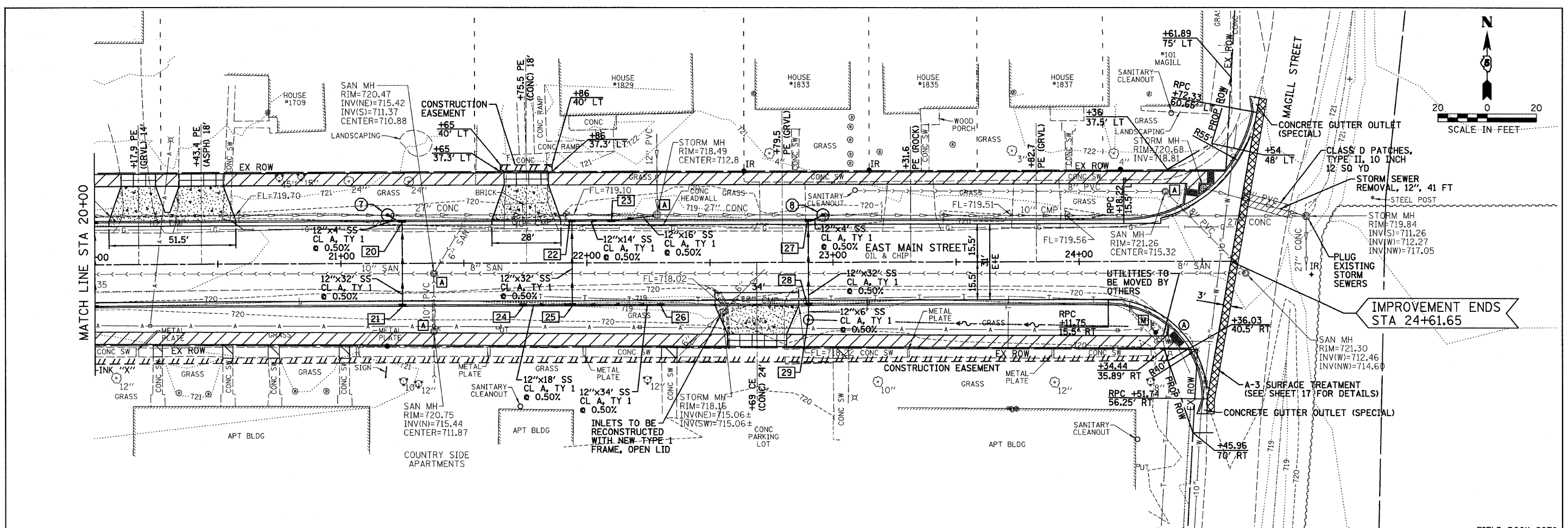


PLAN	SURVEYED	BY	DATE
	ALIGNED		
	NOTED		
	FILE NAME		

PROFILE	SURVEYED	BY	DATE
	PLOTTED		
	STRUCTURE		
	NOTATIONS		

FILE: DATE:



DESIGNED - PJM/LAT	REVISED -	CITY OF CLINTON	EAST MAIN STREET PLAN AND PROFILE	EAST MAIN STREET SECTION 00-00047-00-RP DeWITT, COUNTY	F.A.J.	SECTION	COUNTY	TOTAL SHEETS	SHEET NO.
DRAWN - DRR	REVISED -				7311	09-00047-00-RP	DeWITT	28	11
CHECKED - PJM	REVISED -				CONTRACT NO. 91432				
DATE - 12/01/10	REVISED -				FED. ROAD DIST. NO. ILLINOIS FED. AID PROJECT				

FARNSWORTH GROUP, INC.

CONSULTING ENGINEERS - 2709 MCGRAW DRIVE BLOOMINGTON, ILLINOIS 61704 (309) 663-8435 / (309) 663-1571 FAX

24-8384