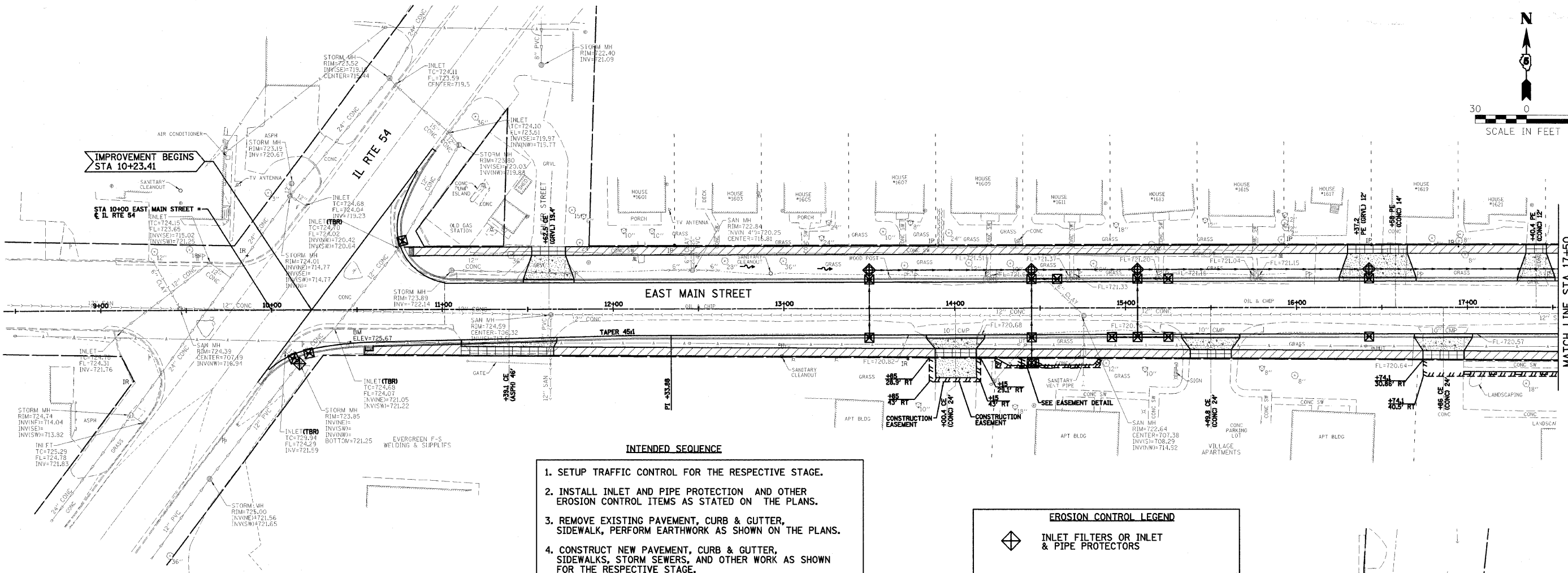


IMPROVEMENT BEGINS  
STA 10+00 EAST MAIN STREET  
IL RTE 54

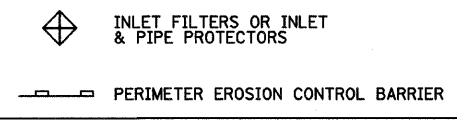
MATCH LINE STA 17+50



**INTENDED SEQUENCE**

1. SETUP TRAFFIC CONTROL FOR THE RESPECTIVE STAGE.
2. INSTALL INLET AND PIPE PROTECTION AND OTHER EROSION CONTROL ITEMS AS STATED ON THE PLANS.
3. REMOVE EXISTING PAVEMENT, CURB & GUTTER, SIDEWALK, PERFORM EARTHWORK AS SHOWN ON THE PLANS.
4. CONSTRUCT NEW PAVEMENT, CURB & GUTTER, SIDEWALKS, STORM SEWERS, AND OTHER WORK AS SHOWN FOR THE RESPECTIVE STAGE.
5. REVISE TRAFFIC CONTROL FOR THE NEXT STAGE AND REPEAT THE ABOVE SEQUENCE UNTIL COMPLETE.

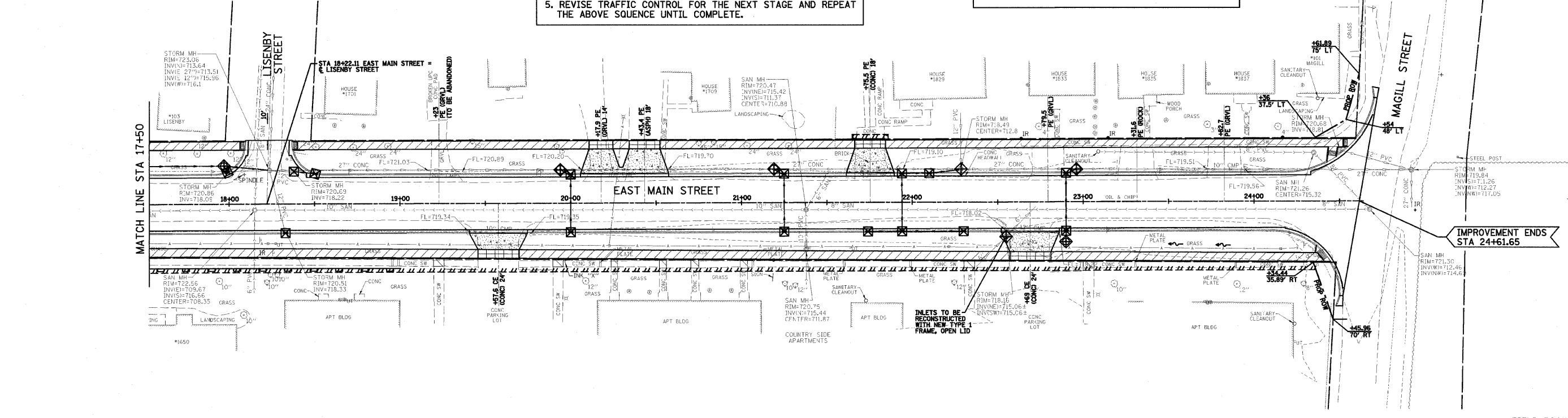
**EROSION CONTROL LEGEND**



MATCH LINE STA 17+50

STA 18+22.11 EAST MAIN STREET =  
LISENBY STREET

IMPROVEMENT ENDS  
STA 24+61.65



DESIGNED - PJM/LAT	REVISED -
DRAWN - DRR	REVISED -
CHECKED - PJM	REVISED -
DATE - 12/01/10	REVISED -

**CITY OF CLINTON**

**EROSION CONTROL PLAN (SWPPP)**

SCALE: 1"=30' SHEET NO. 15 OF 28 SHEETS STA. 10+23.41 TO STA. 24+61.65

**EAST MAIN STREET SECTION 09-00047-00-RP DeWITT, COUNTY**

F.A.U.	SECTION	COUNTY	TOTAL SHEETS	SHEET NO.
7311	09-00047-00-RP	DeWITT	28	15
CONTRACT NO. 91432				
FED. ROAD DIST. NO. ILLINOIS FED. AID PROJECT				

FARNSWORTH GROUP, INC.

CONSULTING ENGINEERS - 2709 MCGRAW DRIVE BLOOMINGTON, ILLINOIS 61704 (309) 663-8435 / (309) 663-1571 FAX

24-8384