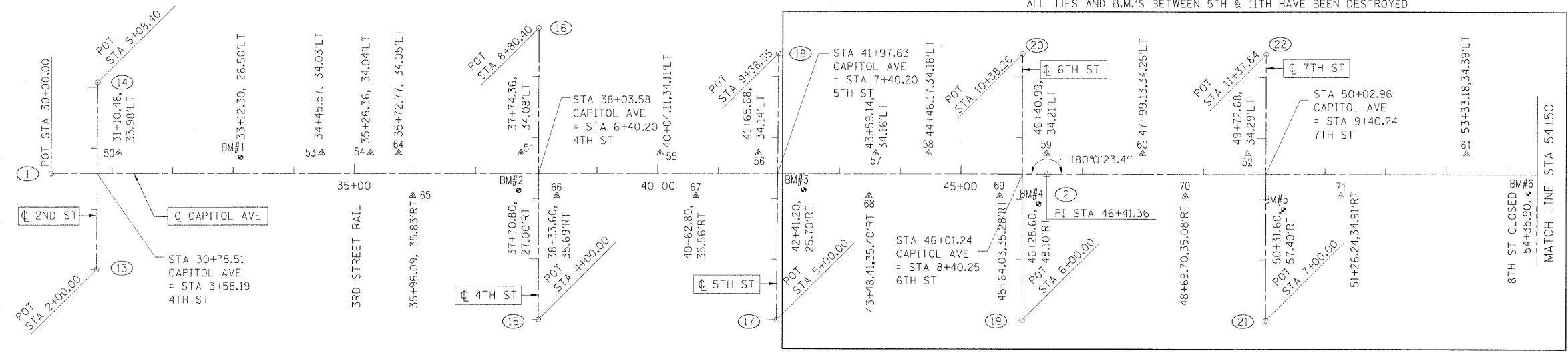


F.A.U. RTE.	SECTION	COUNTY	TOTAL SHEETS	SHEET NO.
7982		SANGAMON	63	19
STA.		TO STA.		
FED. ROAD DIST. NO.		ILLINOIS FED. AID PROJECT		
10-00447-04-PV		CITY OF SPRINGFIELD		

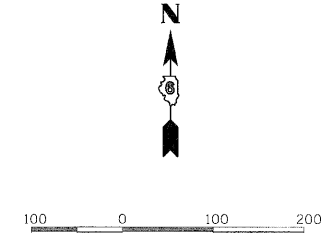
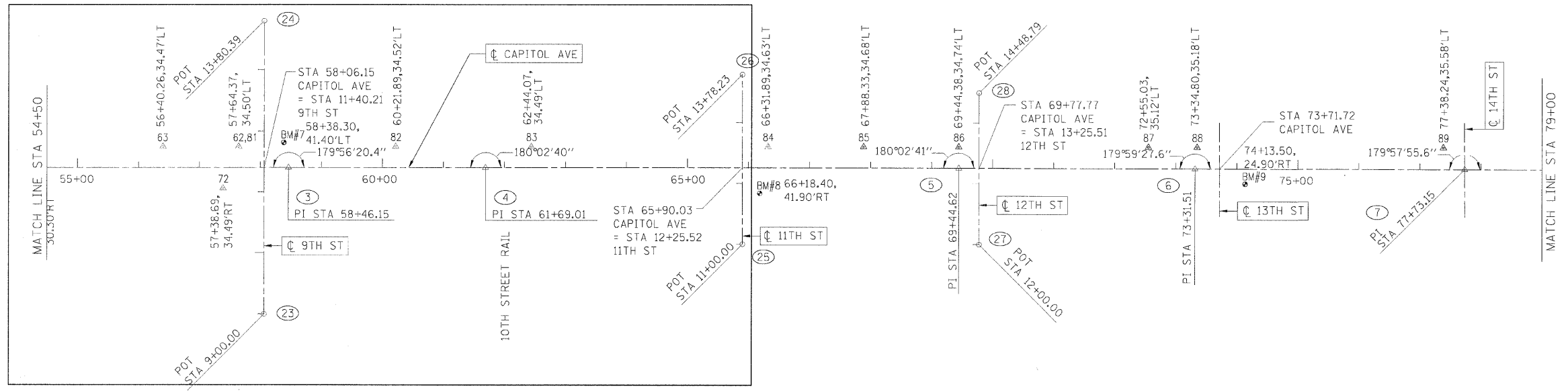
ALL TIES AND B.M.'S BETWEEN 5TH & 11TH HAVE BEEN DESTROYED



LOCATION POINTS @ STREETS

POINT	NORTHING	EASTING
1	0.035	899.512
2	-0.206	2540.870
3	-0.520	3745.667
4	-0.260	4068.523
5	-0.239	4844.136
6	-0.531	5231.022
7	-0.796	5672.665
8	-0.794	6074.165
9	-0.737	6475.795
10	-0.983	6877.177
11	-1.101	7278.035
12	-0.966	7624.001
13	-158.160	974.127
14	150.234	975.875
15	-240.285	1702.978
16	240.115	1703.200
17	-240.339	2095.780
18	198.004	2098.268
19	-240.448	2500.613
20	197.813	2500.870
21	-240.537	2902.361
22	197.306	2902.572
23	-240.715	3705.594
24	239.674	3705.737
25	-125.767	4489.636
26	152.462	4489.435
27	-125.776	4877.318
28	123.012	4877.244

ALL TIES AND B.M.'S BETWEEN 5TH & 11TH HAVE BEEN DESTROYED



LEGEND

61 = CONTROL POINT LOCATION & REFERENCE NUMBER.  
 \* = SEE CONTROL POINT TIES SHEET.

REVISIONS	
NAME	DATE

ILLINOIS DEPARTMENT OF TRANSPORTATION  
 CENTERLINE GEOMETRICS  
 FAU RTE 7982 CAPITOL AVE  
 SEC NO. 10-00447-04-PV  
 SANGAMON COUNTY, ILLINOIS

SCALE: VERT. \_\_\_\_\_  
 HORIZ. \_\_\_\_\_  
 DATE 11/19/10  
 DRAWN BY RSJ  
 CHECKED BY MH



LAYOUT ZZZ 00/00/00  
 DRAWN ZZZ 00/00/00  
 REVIEWED MH 09/19/07  
 PLOT DATE = 01/05/2011  
 FILE NAME = I:\12\abs\12520414\CADD\Road\Microstation\Sheet\Section\_3-11th - 18th\10-00447-04-PV.dgn  
 PLOT SCALE = 100.0000 / 1 in.  
 USER NAME = JohnM20744