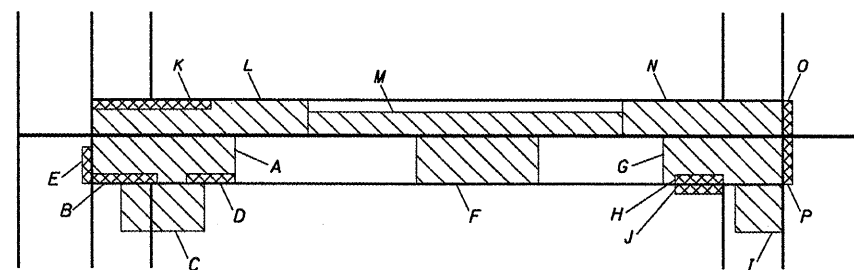


**STRUCTURE REPAIR PLAN AT FLOOR BEAMS**  
(Span 12)



**PLAN AT EXPANSION JOINT**

**LEGEND**

- Indicates Area of Horizontal Structural Repair
- Indicates Area of Vertical Structural Repair

**STRUCTURAL REPAIR OF CONCRETE**  
**SPAN 12**

Patch No.	Vert. or Horiz.	Dimensions	Area (SQ. FT.)
1	H	2.00'x1.33'	2.66
2	H	1.00'x1.33'	1.33
3	V	1.00'x1.00'	1.00
4	V	2.00'x1.00'	2.00
5	V	1.00'x1.00'	1.00
6	H	3.00'x1.33'	4.00
7	V	1.00'x1.00'	1.00
8	V	3.00'x1.00'	3.00
9	H	4.00'x1.33'	5.32
10	V	4.00'x0.50'	2.00
11	H	2.00'x0.67'	1.34
12	V	2.00'x1.00'	2.00
13	V	2.00'x1.00'	2.00
14	V	1.00'x1.00'	1.00
15	V	1.00'x1.00'	1.00
16	H	5.00'x1.33'	6.65
17	V	4.00'x1.00'	4.00
18	V	4.00'x1.00'	4.00
19	H	2.00'x1.00'	2.00
20	V	2.00'x0.67'	1.34
21	H	2.00'x0.67'	1.34
22	V	1.00'x1.00'	1.00
23	V	6.00'x1.00'	6.00
Subtotal of Vertical Repair Areas			32.34
Subtotal of Horizontal Repair Areas			24.64
Subtotal			56.98

**STRUCTURAL REPAIR OF CONCRETE**  
**SPAN 12**

Patch No.	Vert. or Horiz.	Dimensions	Area (SQ. FT.)
A	H	6.00'x1.33'	7.98
B	V	2.75'x2.75'	7.56
C	H	2.00'x3.50'	7.00
D	V	2.00'x2.75'	5.50
E	V	1.50'x1.50'	2.25
F	H	5.00'x1.33'	6.65
G	H	5.00'x1.33'	6.65
H	V	2.00'x1.00'	2.00
I	H	2.00'x2.00'	4.00
J	V	2.00'x2.00'	4.00
K	V	5.00'x1.00'	5.00
L	H	9.00'x2.00'	18.00
M	H	13.00'x1.00'	13.00
N	H	7.00'x2.00'	14.00
O	V	1.00'x1.50'	1.50
P	V	1.50'x1.50'	2.25
Subtotal of Vertical Repair Areas			30.06
Subtotal of Horizontal Repair Areas			77.28
Subtotal			107.34

**STRUCTURE REPAIR DETAILS**  
**SPAN 12**  
**VACHEL LINDSAY BRIDGE REHABILITATION**  
**LONG BAY DRIVE OVER LAKE SPRINGFIELD**  
**SPRINGFIELD, ILLINOIS**

<b>CEC</b> Cummins Engineering Corporation <small>Civil and Structural Engineering</small>	JOB = 2207	DESIGNED	A.A.N.
	FILE = 2207structure.dgn	CHECKED	M.D.C.
	DATE = 2/10/2011	DRAWN	A.J.H.
		CHECKED	M.D.C.

F.A.U. RTE.	SECTION	COUNTY	TOTAL SHEETS	SHEET NO.
8003	09-00469-00-BR	SANGAMON	36	22
CITY OF SPRINGFIELD		CONTRACT NO.		
FED. ROAD DIST. NO.		ILLINOIS FED. AID PROJECT	<b>93546</b>	