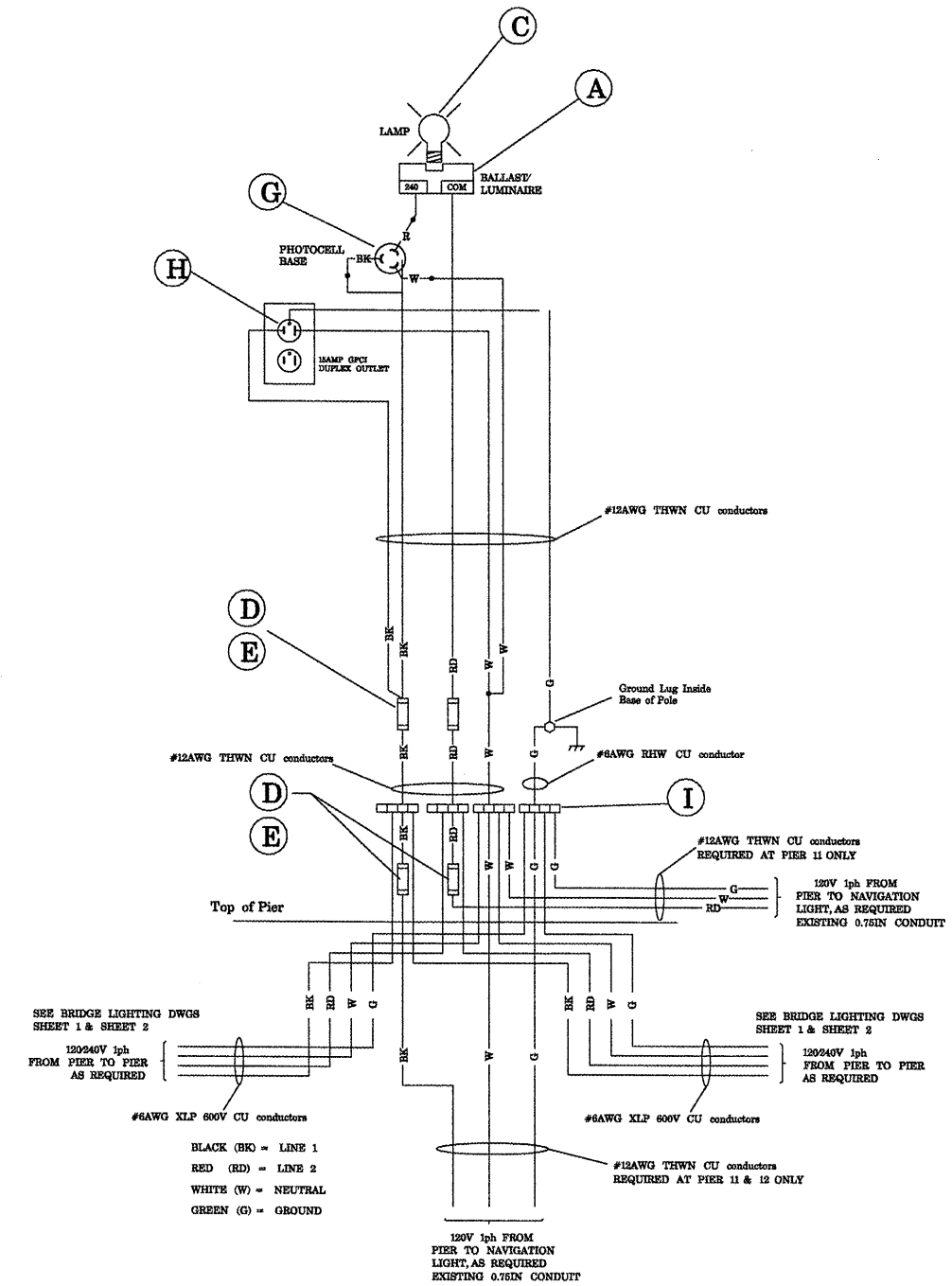
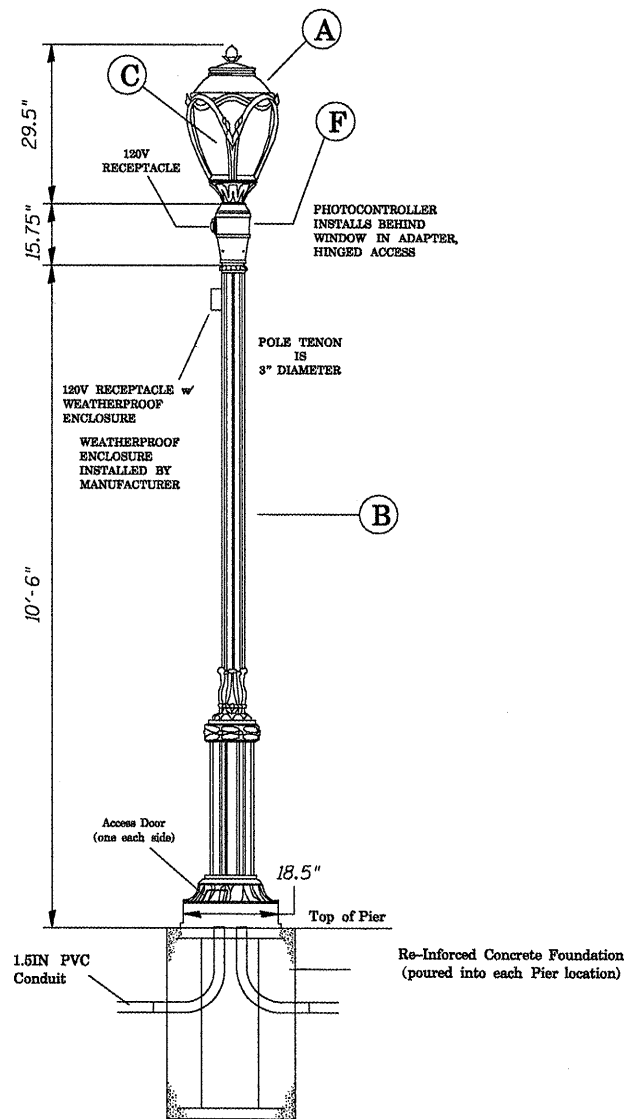


- (A) Luminaire, 150W HPS, Post Top, Black  
240V Multi-Tap Ballast  
Symmetrical Light Distribution  
SENTRY Catalog # SCP-150HPS-240V-MT-V-BK  
Or Approved Equal
- (B) Pole, 10 FT, Aluminum, Black  
Fluted Shaft with Decorative Base  
SENTRY Catalog # SAL-B-10'-6" w/GFI Enclosure  
Or Approved Equal
- (C) Lamp, HPS, 150W, 55V, Non-Cycling  
Mogul Base E39  
Sylvania Catalog # LU150-5-ECO-NC  
Or Approved Equal
- (D) Fuse holder, Inline, 600V, 30A  
Watertight and Submersible  
Non-Glass Cartridge Fuses  
Fuse Size 13/32" Dia x 1 1/2" Long  
HOMAC Part # SLK-22-M, Or Approved Equal
- (E) Fuse, 250V, 10A, Time Delay  
Fuse Size 13/32" Dia x 1 1/2" Long  
10,000AIC at 250VAC  
Bussmann Part # FNM-10, Or Approved Equal
- (F) Adapter Sleeve for Photocontroller  
Hinged Door Access to Photocontroller base  
Rotates 360degrees for photocontrol orientation  
LUMEC Part # SFPH3-SR2-BKTX-LMS34510B
- (G) Electronic Twist-Lock Photocontrol  
120240277V, 2-5 Second Turn-of Delay  
1 footcandle Turn-On Level  
320J13,000amp MOV  
DARK TO LIGHT Part # DP124-1.0-TJ  
Or Approved Equal
- (H) GFCI Duplex Receptacle  
15A, 125V, NEMA 5-15R  
HUBBELL Catalog # GFST15AL  
Or Approved Equal
- (I) Electrical Connector  
3 Taps, #14-10AWG Range  
CU/AL Rated, Insulated  
UTILCO Catalog # SLC3-0C  
Or Approved Equal



**BILL OF MATERIAL**

Item	Unit	Total
Conduit Embedded in Structure, 1 1/2" dia., PVC	Foot	2,620
Electric Cable in Conduit, 600V (XLP-Type Use) 4/C No. 6	Foot	2,680
Lighting Unit, Complete	Each	28

COUNTY	SECTION
TOWNSHIP	14 SECTION
DIG NOTICE NO.	

**CITY WATER LIGHT & POWER  
SPRINGFIELD, ILLINOIS**

**LIGHTING PLAN & ELEVATION  
YACHEL LINDSAY BRIDGE REHABILITATION  
LONG BAY DRIVE OVER LAKE SPRINGFIELD  
SPRINGFIELD, ILLINOIS**

DRAWING BY: \_\_\_\_\_ PLOT SCALE: 1" = 16R  
DRAWING DATE: \_\_\_\_\_

Bridge Lighting Drawing Sheet 3 of 3  
Light Unit Complete

**LIGHTING PLANS  
YACHEL LINDSAY BRIDGE REHABILITATION  
LONG BAY DRIVE OVER LAKE SPRINGFIELD  
SPRINGFIELD, ILLINOIS**

F.A.U. RTE.	SECTION	COUNTY	TOTAL SHEETS	SHEET NO.
8003	09-00469-00-BR	SANGAMON	36	36
CITY OF SPRINGFIELD		CONTRACT NO.		
FED. ROAD DIST. NO.	ILLINOIS FED. AID PROJECT	<b>93546</b>		