

F.A.U. RTE.	SECTION	COUNTY	TOTAL SHEETS	SHEET NO.
8376	07-00112-00-PV	EFFINGHAM	53	1
FED. ROAD DIST. NO.	ILLINOIS	CONTRACT NO. 95635		

STATE OF ILLINOIS
DEPARTMENT OF TRANSPORTATION
DIVISION OF HIGHWAYS

FEDERAL - AID PLANS FOR
LOCAL AGENCY IMPROVEMENT

CITY OF EFFINGHAM, EFFINGHAM COUNTY

PROJECT NO. M-5021(026)

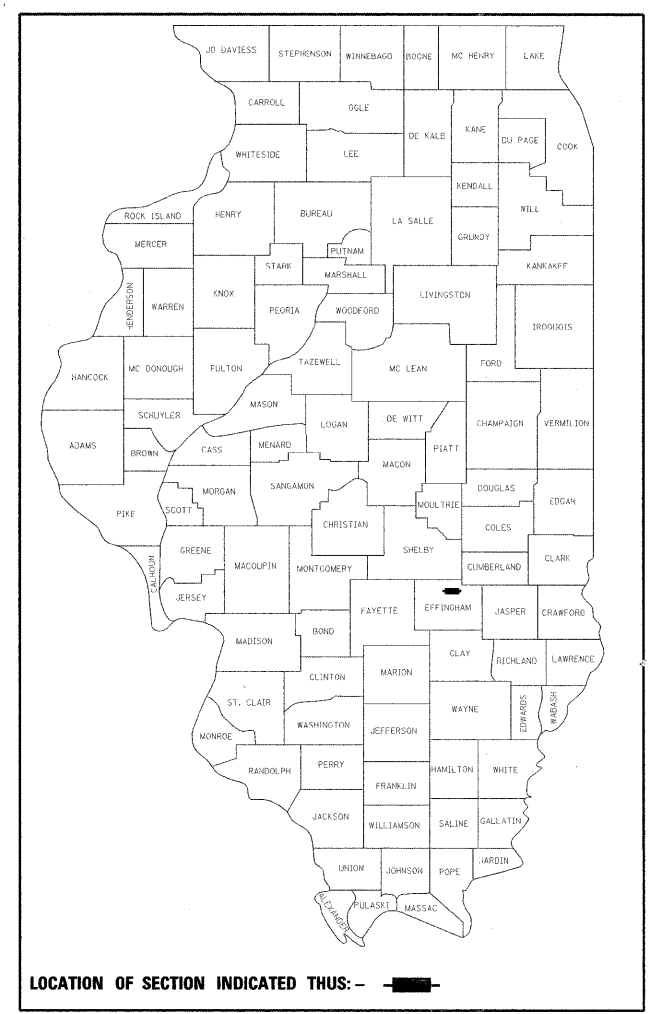
JOB C-97-077-10

RICKELMAN AVENUE (F.A.U. 8376)

(U.S. ROUTE 45 (F.A.U. 8379) TO EAST OF BOX CULVERT STA 24+60)

SECTION 07-00112-00-PV

SURFACE TRANSPORTATION URBAN FUNDS



LOCATION OF SECTION INDICATED THIS: - [Black Rectangle] -

INDEX OF SHEETS

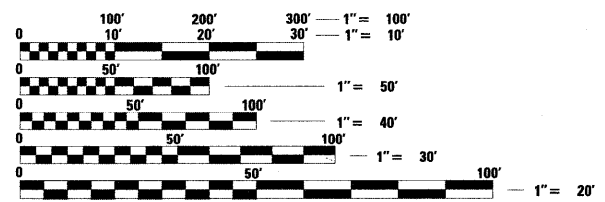
- 1 COVER SHEET
- 2-3 SUMMARY OF QUANTITIES
- 4-5 TYPICAL CROSS SECTIONS, LEGEND, AND PLAN NOTES
- 6-8 SCHEDULE OF QUANTITIES
- 9 CONTROL AND SURVEY TIES
- 10-12 PLAN AND PROFILE
- 13 STAGE CONSTRUCTION LEGEND AND SIGN SCHEDULE
- 14-20 STAGE CONSTRUCTION PLAN
- 21-22 EROSION CONTROL PLAN "SWPPP"
- 23-25 WATER MAIN PLAN
- 26-27 PAVEMENT MARKING AND SIGNAGE PLAN
- 28-29 MISCELLANEOUS ROADWAY DETAILS
- 30-31 WATER MAIN GENERAL NOTES AND DETAILS
- 32 SANITARY SEWER GENERAL NOTES AND DETAILS
- 33-42 STRUCTURE SHEETS
- 43-53 CROSS SECTIONS

STATE STANDARD DETAILS

000001-05	STANDARD SYMBOLS, ABBREVIATIONS AND PATTERNS
280001-05	TEMPORARY EROSION CONTROL SYSTEMS
420001-07	PAVEMENT JOINTS
420111-03	PCC PAVEMENT ROUNDOUTS
420701-02	PAVEMENT FABRIC
424001-05	CURB RAMPS FOR SIDEWALKS
442201-03	CLASS C AND D PATCHES
542301-03	PRECAST REINFORCED CONCRETE FLARED END SECTION
602301-03	INLET - TYPE A
602306-03	INLET - TYPE B
602401-03	MANHOLE TYPE A
602601-02	PRECAST REINFORCED CONCRETE FLAT SLAB TOP
602701-02	MANHOLE STEPS
604001-03	FRAME AND LIDS TYPE 1
604006-04	FRAME AND GRATE TYPE 3
604041-02	FRAME AND GRATE TYPE 9
606001-04	CONCRETE CURB TYPE B AND COMBINATION CONCRETE CURB AND GUTTER
664001-02	CHAIN LINK FENCE
667101-01	PERMANENT SURVEY MARKERS
701006-03	OFF-RD OPERATIONS, 2L, 2W, 15' (4.5 m) TO 24" (600 mm) FROM PAVEMENT EDGE
701011-02	OFF-RD MOVING OPERATIONS, 2L, 2W, DAY ONLY
701301-04	LANE CLOSURE, 2L, 2W, SHORT TIME OPERATIONS
701311-03	LANE CLOSURE, 2L, 2W, MOVING OPERATIONS-DAY ONLY
701321-11	LANE CLOSURE, 2L, 2W, BRIDGE REPAIR WITH BARRIER
701501-06	URBAN LANE CLOSURE, 2L, 2W, UNDIVIDED
701502-04	URBAN LANE CLOSURE, 2L, 2W, WITH BIDIRECTIONAL LEFT TURN LANE
701801-04	LANE CLOSURE MULTILANE 1W OR 2W CROSSWALK OR SIDEWALK CLOSURE
701901-01	TRAFFIC CONTROL DEVICES
704001-06	TEMPORARY CONCRETE BARRIER
720001-01	SIGN PANEL MOUNTING DETAILS
720006-02	SIGN PANEL ERECTION DETAILS
780001-02	TYPICAL PAVEMENT MARKINGS

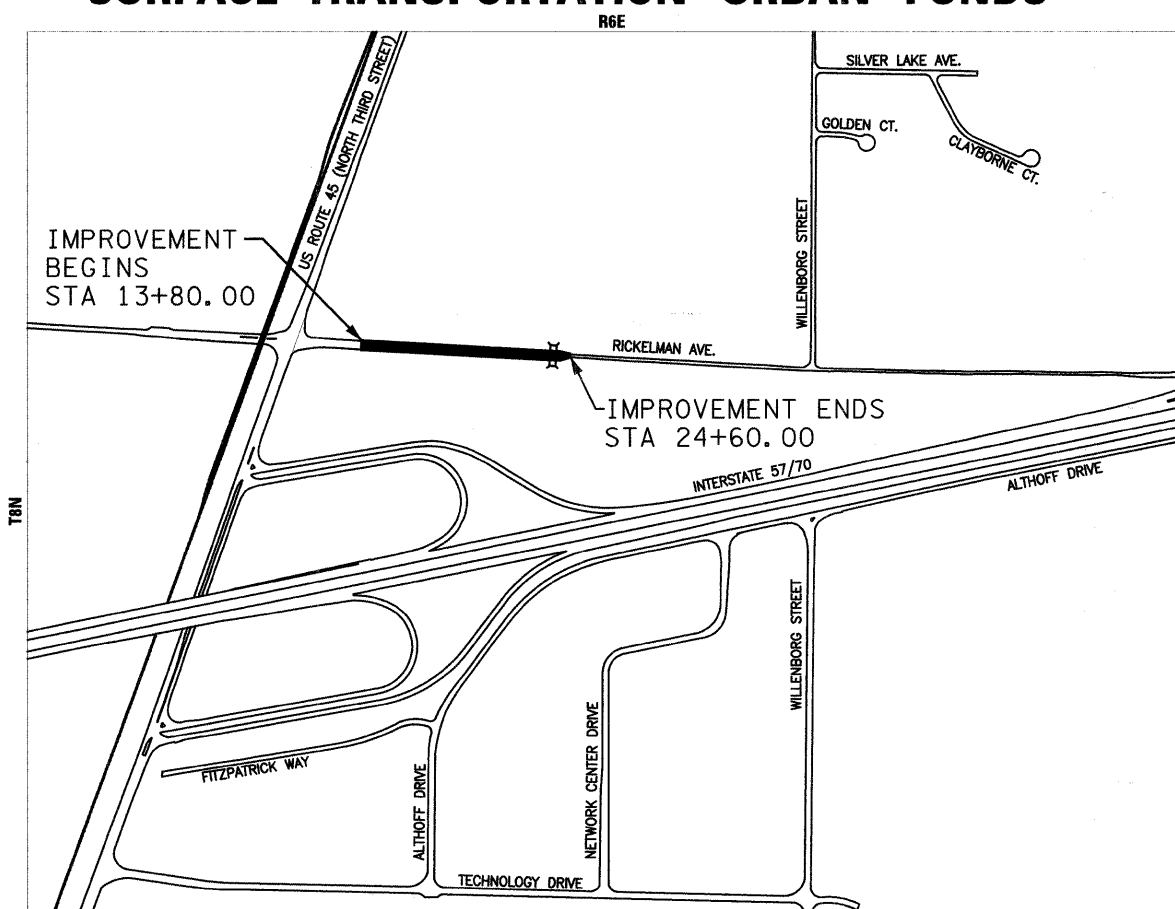
DESIGN DESIGNATION DATA

RICKELMAN AVENUE - URBAN COLLECTOR
 POSTED SPEED = 30 MPH
 DESIGN SPEED = 35 MPH
 ADT (2010) = 4,845, ADT (2030) = 10,262, DHV = 1.026

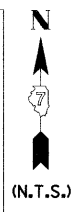


FULL SIZE PLANS HAVE BEEN PREPARED USING STANDARD ENGINEERING SCALES. REDUCED SIZED PLANS WILL NOT CONFORM TO STANDARD SCALES. IN MAKING MEASUREMENTS ON REDUCED PLANS, THE ABOVE SCALES MAY BE USED.

J.U.L.I.E.
JOINT UTILITY LOCATION INFORMATION FOR EXCAVATION
1-800-892-0123
OR 811



LOCATION MAP - CITY OF EFFINGHAM
 TOTAL LENGTH OF PROJECT = 1,080.00 FEET = 0.205 MILES
 NET LENGTH OF PROJECT = 1,080.00 FEET = 0.205 MILES
 [Thick Line] PROPOSED ROADWAY IMPROVEMENTS



Philip S. Allin
 10-19-10
 SIGNATURE
 EXPIRATION DATE NOVEMBER 30, 2011

THE IMPROVEMENTS UNDER THIS CONTRACT ARE IN ACCORDANCE WITH THE ILLINOIS DEPARTMENT OF TRANSPORTATION "BUREAU OF LOCAL ROADS AND STREETS MANUAL, 2005 EDITION"

APPROVED 10-21 2010
Steven W. Mills
 CITY ENGINEER

PASSED Nov 10, 2010
Maureen E. Card
 DISTRICT SEVEN ENGINEER OF LOCAL ROADS & STREETS

Releasing For Bid Based on Limited Review

Nov 10, 2010
Roger L. Dushoff
 DEPUTY DIRECTOR OF HIGHWAYS, REGION FOUR ENGINEER
 STATE OF ILLINOIS
 DEPARTMENT OF TRANSPORTATION

IL 45 TO EAST OF BOX

CONTRACT NO. 95635

FARNSWORTH GROUP, INC.

CONSULTING ENGINEERS - 104 NORTH SECOND STREET, SUITE A, EFFINGHAM, IL 62401 (217)342-5668 / (217)342-5853