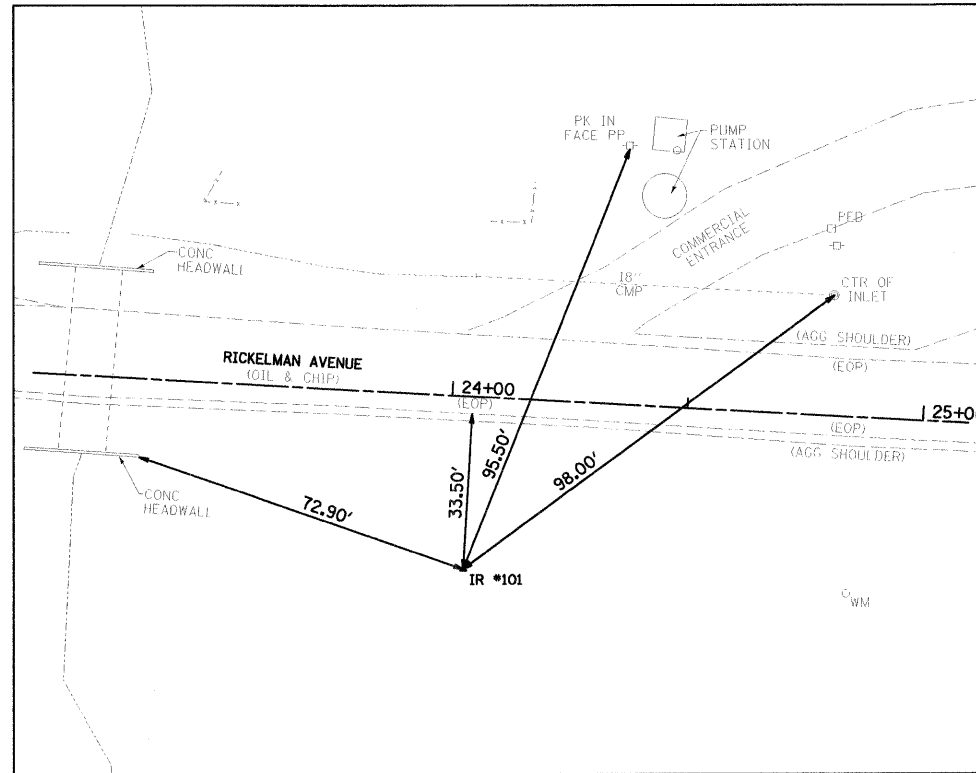
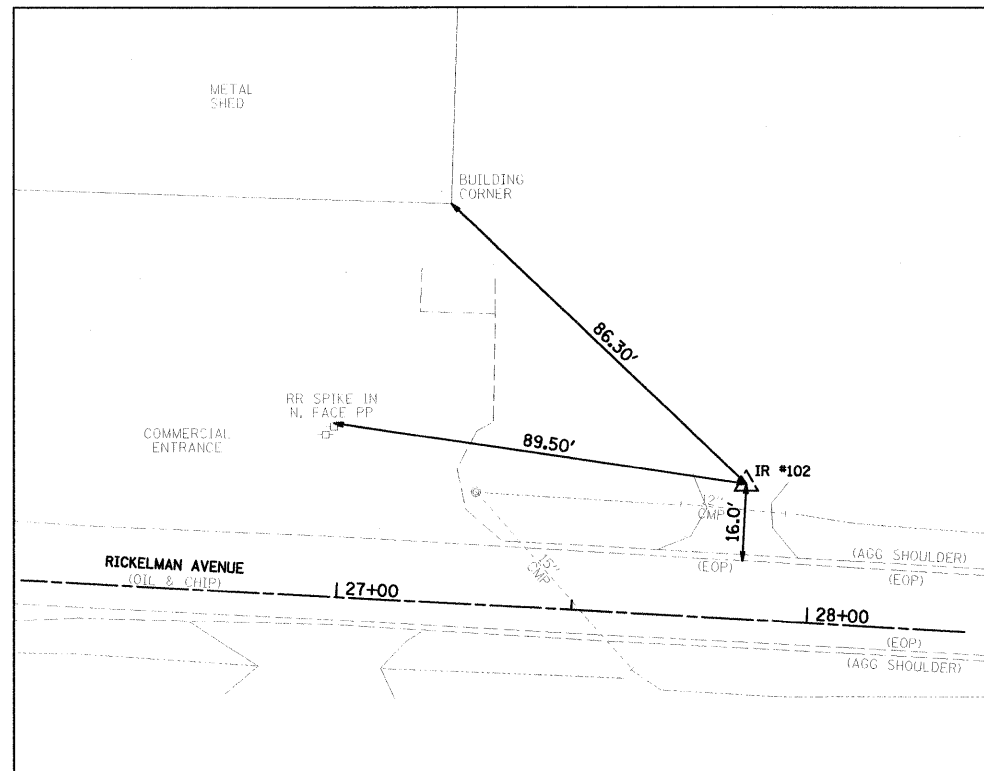


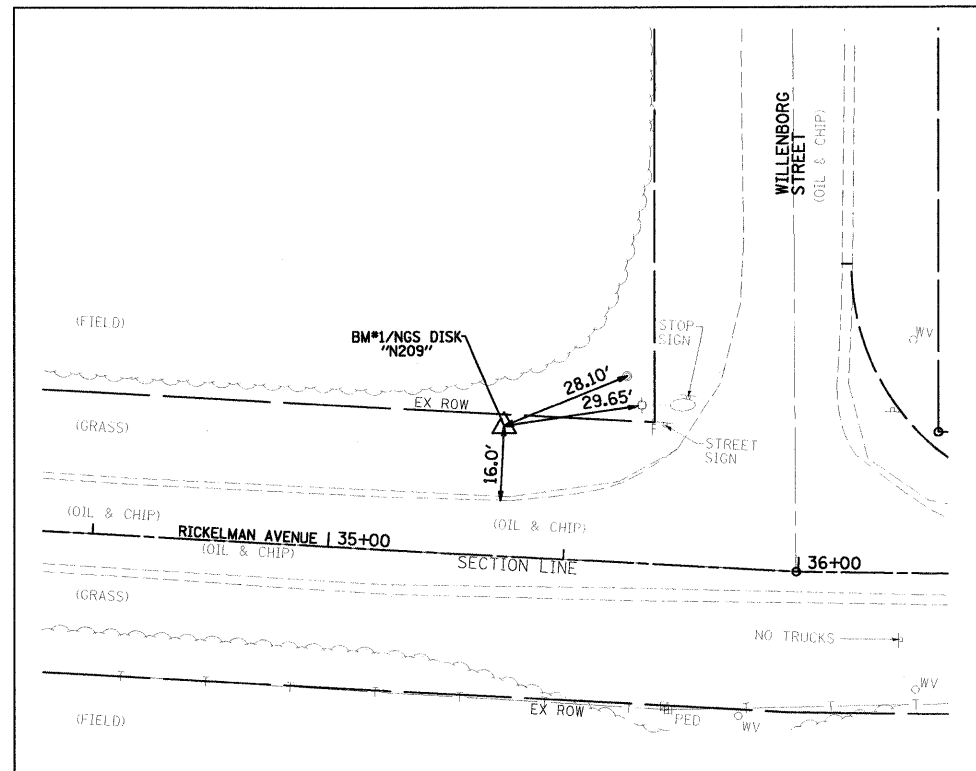
IRON ROD #100 / N 903846.875 / E 929039.194  
STA. 22+29.2 / 38.0' LT



IRON ROD #101 / N 903762.750 / E 929209.914  
STA. 24+04.3 / 36.7' RT



IRON ROD #102 / N 903807.091 / E 929594.241  
STA. 27+85.6 / 28.7' LT



NGS DISK "N209" PID# KB0520 / N 903764.918 / E 930343.418  
STA. 35+36.0 / 27.6' LT

**BENCHMARKS:**

1. NGS DISK "N209" PID# KB0520 IN THE NW QUAD OF RICKELMAN AVE. AND WILLENBURG ST. STA 35+36.0, 27.6' LT ELEV=607.44 (BK EFF-58/2)
2. RR SPIKE IN POWER POLE, FIFTH POLE WEST OF WILLENBURG ST. STA 26+97.6, 36.0' LT ELEV=605.13 (BK EFF-58/2)
3. TOP CAP BOLT OF FIRE HYDRANT ON SOUTH SIDE OF RICKELMAN AVE. IN FRONT OF HOUSE #805 STA 25+60.6, 22.7' RT ELEV=604.03 (BK EFF-58/2)
4. TOP OPERATING NUT OF FIRE HYDRANT ON NORTH SIDE OF RICKELMAN AVE. AT SE CORNER OF "PILOT FUEL" SEMI PARKING LOT. STA 20+23.7, 32.2' LT ELEV=599.75 (BK EFF-58/2)
5. TOP CENTER BOLT OF FIRE HYDRANT IN THE NE QUAD OF U.S. ROUTE 45 AND RICKELMAN AVE STA 11+31.2, 28.8' LT ELEV=607.54 (BK EFF-58/2)



NOT TO SCALE

BASELINE AND PROPOSED C COORDINATES			
DESCRIPTION	STATION	NORTHING	EASTING
IMPROVEMENT BEGINS	13+80.00	903,855.45	928,189.16
PROP STRUCTURE	23+23.00	903,803.81	929,130.74
WILLENBURG STREET	35+99.52	903,733.91	930,405.35
IMPROVEMENT ENDS	38+90.00	903,729.55	930,695.79

IL 45 TO EAST OF BOX

FILE NAME - 0070198_ControlTies.wsdwg	USER NAME - #USER#	DESIGNED - PSA	REVISED -	<b>CITY OF EFFINGHAM</b>	<b>RICKELMAN AVE (FAU 8376) SECTION 07-00112-00-PV CONTROL AND SURVEY TIES</b>	F.A.U. RTE. 8376	SECTION 07-00112-00-PV	COUNTY EFFINGHAM	TOTAL SHEETS 53	SHEET NO. 9	
PLOT SCALE - #SCALE#	CHECKED - PJM	DRAWN - JTC	REVISED -			SCALE: N.T.S.	SHEET NO. OF SHEETS	STA. 13+80.00 TO STA. 24+10.00	FED. ROAD DIST. NO.	ILLINOIS FED. AID PROJECT	CONTRACT NO. 95635
PLOT DATE - 10/19/2010	DATE 10/19/10	DATE 10/19/10	REVISED -								
		FARNSWORTH GROUP, INC.				CONSULTING ENGINEERS - 104 NORTH SECOND STREET, SUITE A, EFFINGHAM, IL 62401 (217)342-5668 / (217)342-5853 FAX					