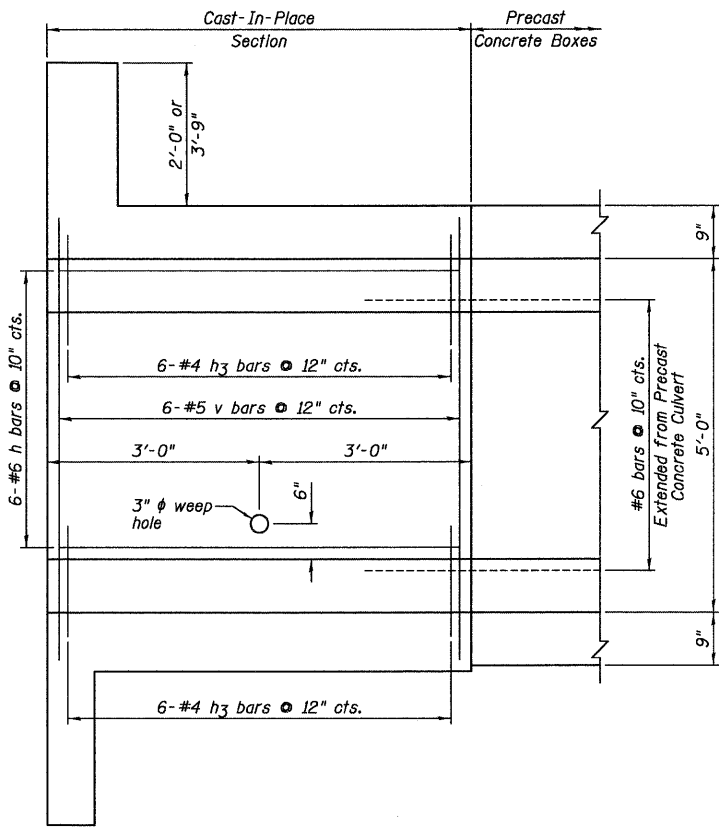
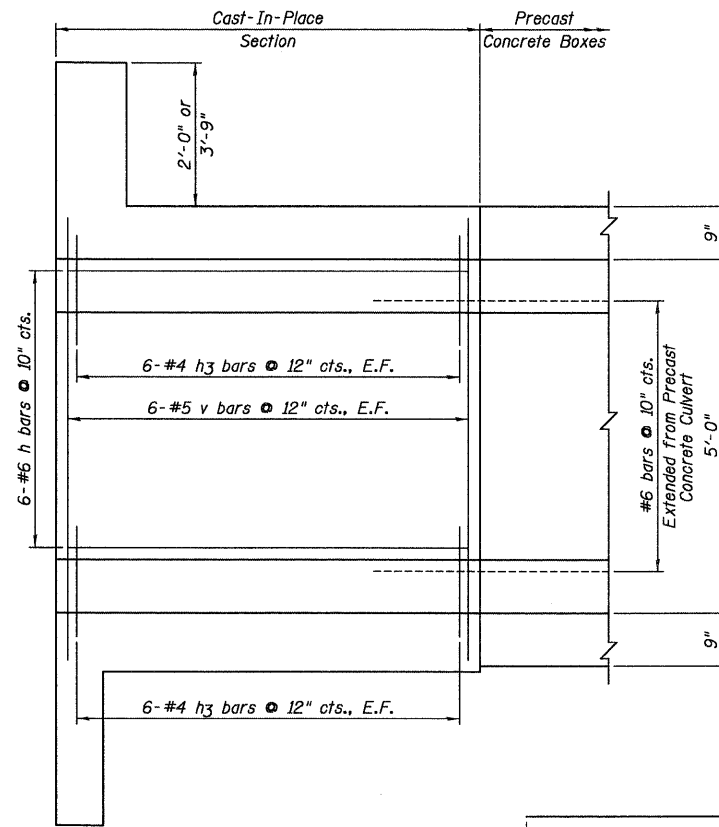


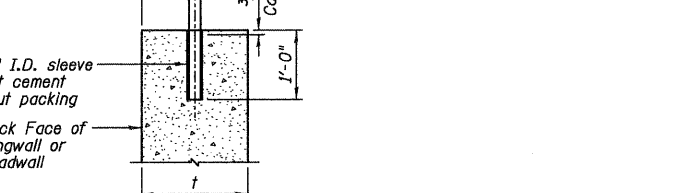
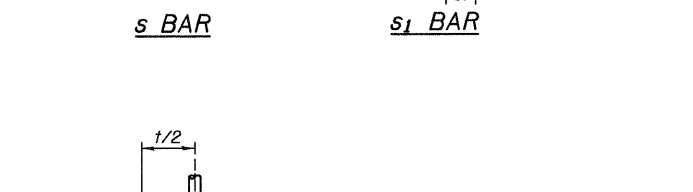
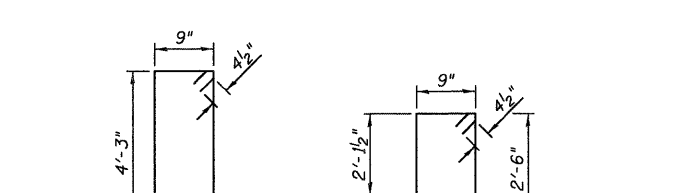
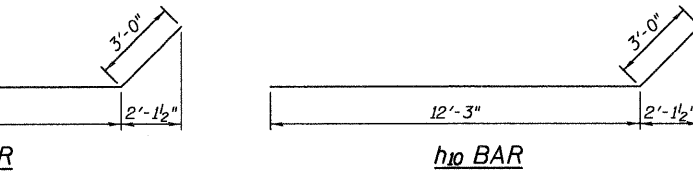
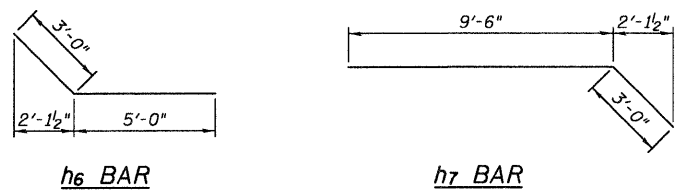
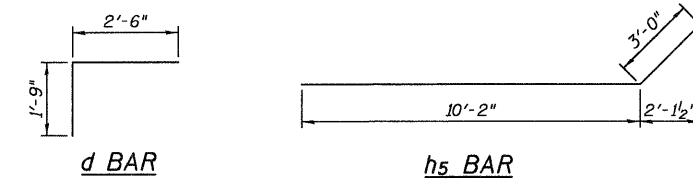
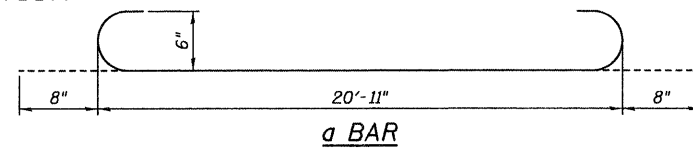
STATE OF ILLINOIS  
DEPARTMENT OF TRANSPORTATION



EXTERIOR WALL

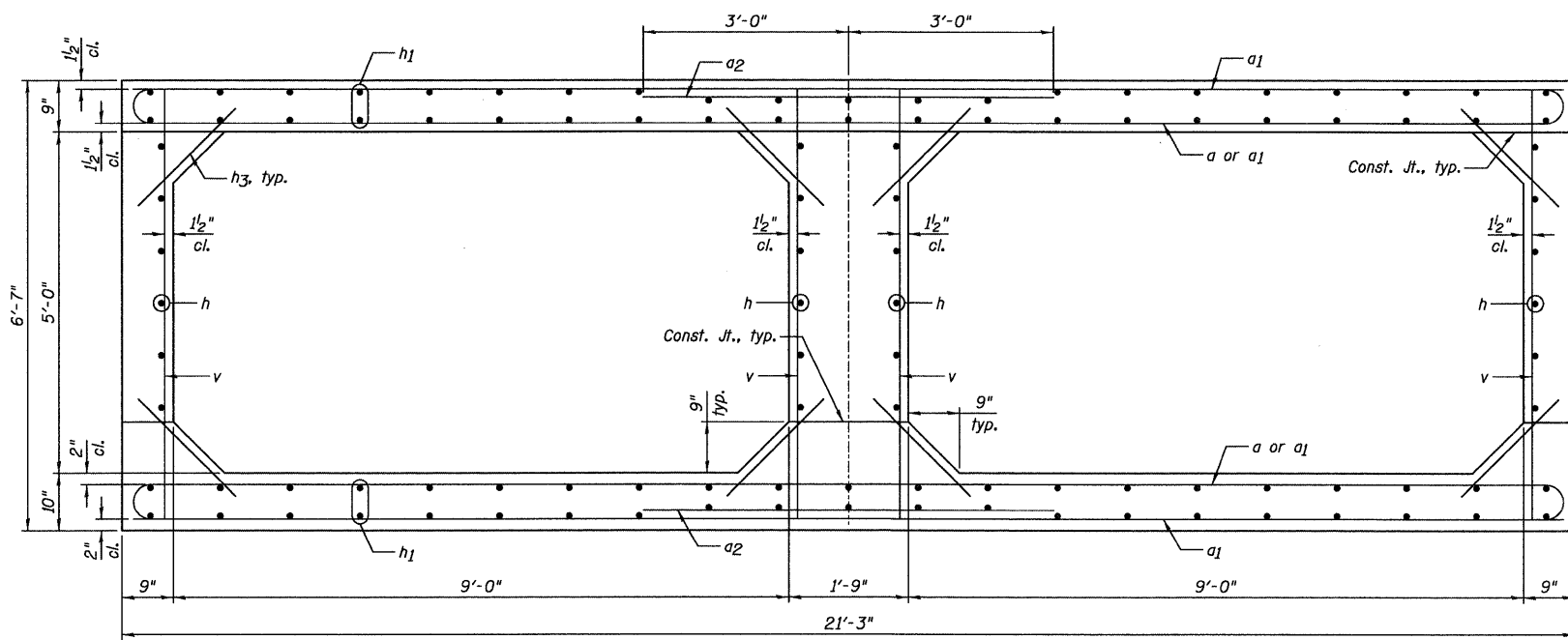


INTERIOR WALL

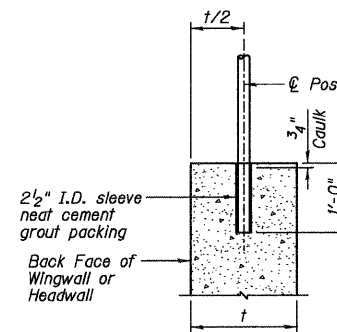
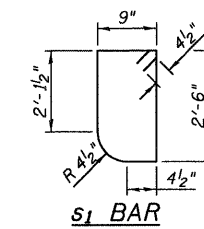
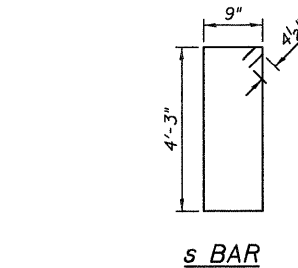


CAST-IN-PLACE CULVERT  
BILL OF MATERIAL

Bar	No.	Size	Length	Shape
a	22	#6	22'-3"	U
a1	46	#6	20'-11"	—
a2	24	#6	6'-0"	—
d	42	#4	4'-3"	L
h	48	#6	5'-8"	—
h1	176	#5	5'-8"	—
h2	16	#6	20'-0"	—
h3	96	#4	1'-11"	—
h4	6	#4	20'-11"	—
h5	14	#6	13'-2"	—
h6	20	#5	8'-0"	—
h7	10	#6	12'-6"	—
h8	10	#6	9'-3"	—
h9	14	#7	15'-11"	—
h10	10	#7	15'-3"	—
h11	12	#7	12'-0"	—
s	21	#4	10'-9"	U
s1	21	#4	7'-1"	U
v	52	#5	6'-3"	—
v1	7	#4	17'-6"	—
v2	3	#4	19'-8"	—
v3	9	#4	20'-1"	—
v4	3	#4	23'-3"	—
Item		Unit	Quantity	
Reinforcement Bars		Pound	7,360	
Concrete Box Culverts		Cu. Yd.	45.1	

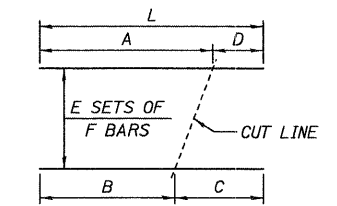


SECTION THRU CAST-IN-PLACE CONCRETE BARRELS



CHAIN LINK FENCE  
POST ANCHORAGE DETAIL

BAR CUTTING DIAGRAM



BAR	A	B	C	D	E	F	L
v1	10'-5"	7'-1"	10'-5"	7'-1"	1	7	17'-6"
v2	10'-5"	9'-3"	10'-5"	9'-3"	1	3	19'-8"
v3	12'-2"	7'-11"	12'-2"	7'-11"	1	9	20'-1"
v4	12'-2"	11'-1"	12'-2"	11'-1"	1	3	23'-3"

CAST-IN-PLACE CONCRETE  
CULVERT SECTION, DETAILS  
AND BILL OF MATERIAL

DESIGNED	SDH
CHECKED	MSW
DRAWN	JWK
CHECKED	MSW

DATE 10/19/10

FARNSWORTH GROUP, INC.

CONSULTING ENGINEERS - 104 N. SECOND ST., SUITE A, EFFINGHAM, ILLINOIS 62401 (217) 342-5668 / (217) 342-5853 FAX

NOTES:

- 1.) Chain Link Fence shall have a 1 5/8" O.D. top post.
- 2.) Maximum Chain Link Fence post spacing = 6'-0"

SHEET NO. C5	F.A.P. RTE.	SECTION	COUNTY	TOTAL SHEETS	SHEET NO.
10 SHEETS		07-00112-00-PV	EFFINGHAM	53	37
			CONTRACT NO. 95635		
FED. ROAD DIST. NO. 3 ILLINOIS FED. AID PROJECT					