

ROUTE NO.	SECTION	COUNTY	TOTAL SHEETS	SHEET NO.
FAS 721	05-00111-00-RS	FAYETTE	7	1
FEDERAL AID PROJECT		ILLINOIS	PROJECT RS-0721 (221)	CONTRACT NO. 95645

INDEX OF SHEETS

- 1 COVER SHEET
- 2 GENERAL NOTES AND SUMMARY OF QUANTITIES
- 3 OVERALL PLAN
- 4 TYPICAL CROSS SECTIONS
- 5 MISCELLANEOUS INTERSECTION DETAILS AND SCHEDULE
- 6 MISCELLANEOUS SCHEDULES AND DETAILS
- 7 ENLARGED PLANS

**STATE OF ILLINOIS
DEPARTMENT OF TRANSPORTATION
DIVISION OF HIGHWAYS
PLANS FOR PROPOSED
FEDERAL AID SECONDARY PROJECT
F.A.S. ROUTE 721 - C.H. 1 (STR FUNDS)
SECTION 05-00111-00-RS
PROJECT NO. RS-0721 (221)
JOB NO. C-97-032-11
FAYETTE COUNTY**

STANDARDS

- STANDARD 000001-06 STANDARD SYMBOLS, ABBREVIATIONS AND PATTERNS
- STANDARD 420001-07 PAVEMENT JOINT
- STANDARD 442201-03 CLASS C AND D PATCHES
- STANDARD 701301-04 LANE CLOSURE, 2L, 2W, SHORT TIME OPERATIONS
- STANDARD 701306-03 LANE CLOSURE, 2L, 2W, MOVING OPERATIONS DAY ONLY, FOR SPEEDS ≥ 45 MPH
- STANDARD 701311-03 LANE CLOSURE, 2L, 2W, MOVING OPERATIONS -DAY ONLY
- STANDARD 701336-06 LANE CLOSURE, 2L, 2W, WORK AREAS IN SERIES, FOR SPEEDS ≥ 45 MPH
- STANDARD 701501-06 URBAN LANE CLOSURE, 2L, 2W, UNDIVIDED
- STANDARD 701901-01 TRAFFIC CONTROL DEVICES
- STANDARD 780001-02 TYPICAL PAVEMENT MARKINGS

UTILITIES

TYPE	NAME OF UTILITY	PHONE NO.
ELECTRIC	AMEREN IP - (SOUTH)	618-236-6281
	SOUTHWESTERN ELECTRIC COOP	618-664-1025
GAS	AMEREN IP - (SOUTH)	618-236-6281
WATER	VILLAGE OF FILLMORE	217-538-2470
	VILLAGE OF RAMSEY	618-423-2019
TELEPHONE	A.T.&T. DISTRIBUTION	630-552-9785
	FRONTIER COMMUNICATIONS	402-250-1095
CABLE	NEW WAVE COMMUNICATIONS	217-287-7992
SEWER	VILLAGE OF FILLMORE	217-538-2470
	VILLAGE OF RAMSEY	618-423-2019



48 HOURS PRIOR TO EXCAVATION CALL J.U.L.I.E.:
811 OR 1-800-892-0123

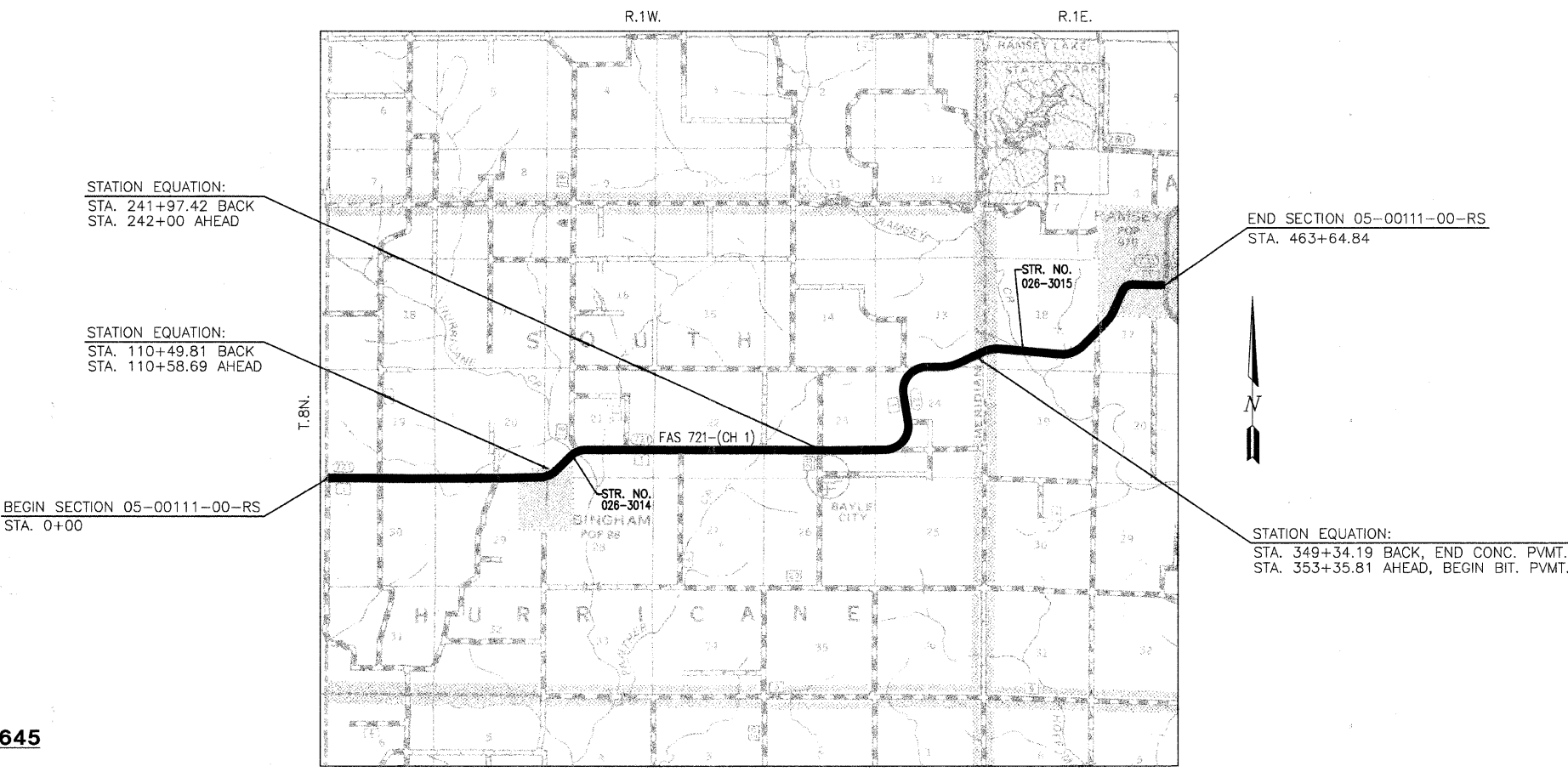
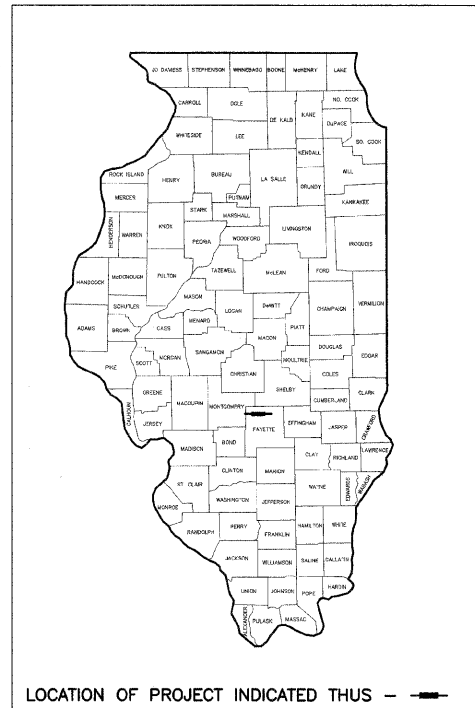
DESIGN CLASSIFICATION: RURAL MAJOR COLLECTOR
RURAL SECTION
A.D.T.(2011) = 900
A.D.T.(2031) = 1050
DESIGN SPEED = 50MPH(LEVEL) 40MPH(ROLLING)
URBAN SECTION
A.D.T.(2011) = 2100
A.D.T.(2031) = 2500
DESIGN SPEED = 30MPH(LEVEL)

CONTRACT NO. 95645

RHUTASEL and ASSOCIATES, INC.
CONSULTING ENGINEERS • LAND SURVEYORS
CENTRALIA, ILLINOIS FREEBURG, ILLINOIS



PREPARED FOR:
AECOM
DATE: FEBRUARY 14, 2011
RHUTASEL JOB NO. 51810



LOCATION MAP
APPROXIMATE SCALE - 1" = 0.70 MILE
NET LENGTH OF IMPROVEMENTS - 45,951.76 FEET = 8.703 MILE

FAYETTE COUNTY
HIGHWAY DEPARTMENT

APPROVED 2-15, 2011
Michael W. [Signature]
FAYETTE COUNTY ENGINEER

PASSED 2/24, 2011
Margaret [Signature]
DISTRICT SEVEN ENGINEER OF
LOCAL ROADS & STREETS

Releasing For
Bid Based on
Limited Review 2/24, 2011
Roger L. [Signature]
DEPUTY DIRECTOR OF HIGHWAYS,
REGION FOUR ENGINEER

STATE OF ILLINOIS
DEPARTMENT OF TRANSPORTATION

Gary L. Hahn 02-15-11
GARY L. HAHN
CENTRALIA, ILLINOIS
ILLINOIS LICENSED PROFESSIONAL
ENGINEER NO. 62-42606
EXPIRES NOV. 30, 2011