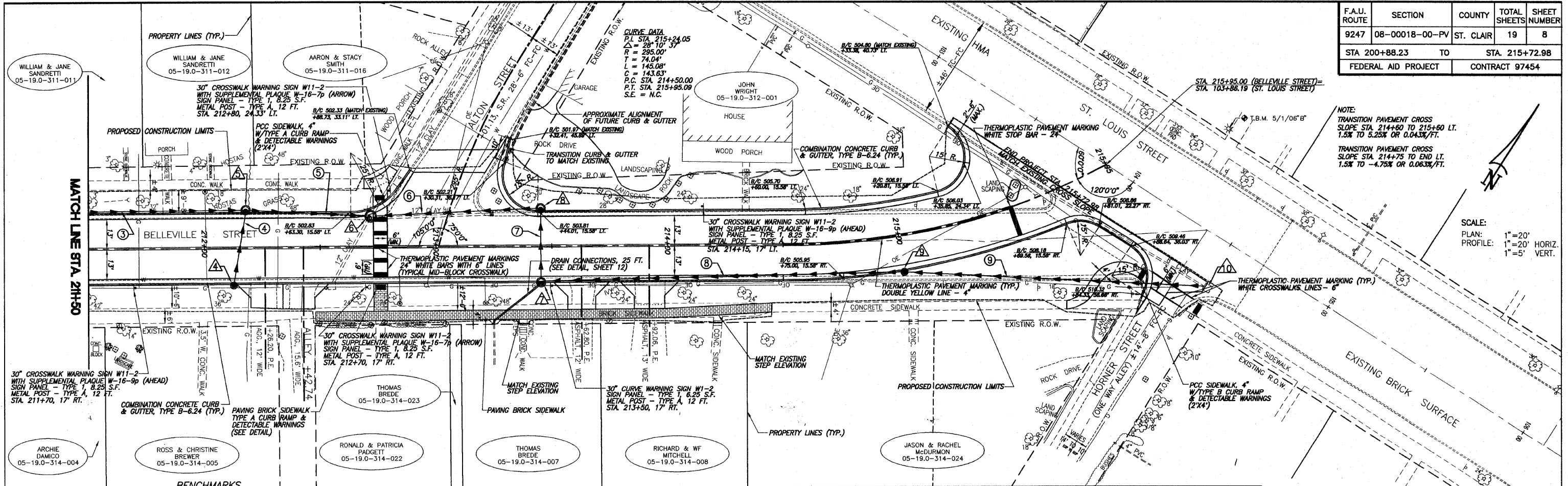
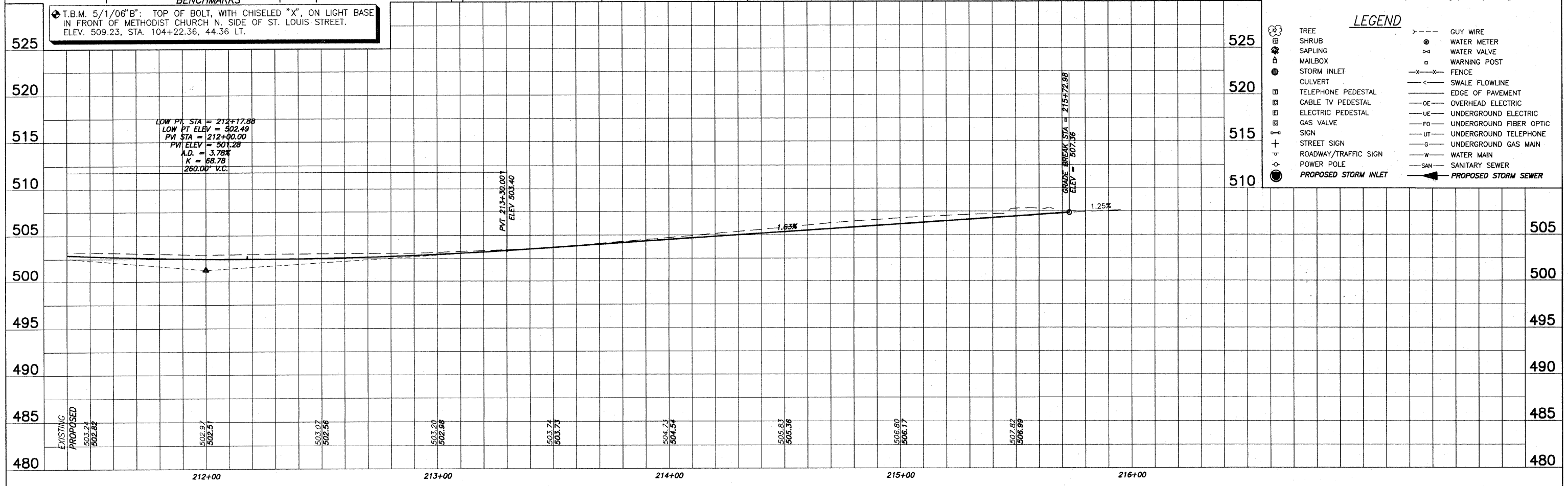


F.A.U. ROUTE	SECTION	COUNTY	TOTAL SHEETS	SHEET NUMBER
9247	08-00018-00-PV	ST. CLAIR	19	8
STA 200+88.23		TO		STA. 215+72.98
FEDERAL AID PROJECT			CONTRACT 97454	



NOTE:
 TRANSITION PAVEMENT CROSS SLOPE STA. 214+60 TO 215+60 LT. 1.5% TO 5.25% OR 0.043%/FT.
 TRANSITION PAVEMENT CROSS SLOPE STA. 214+75 TO END LT. 1.5% TO -4.75% OR 0.063%/FT.

SCALE:
 PLAN: 1"=20'
 PROFILE: 1"=20' HORIZ.
 1"=5' VERT.



BENCHMARKS
 T.B.M. 5/1/06 "B": TOP OF BOLT, WITH CHISELED "X", ON LIGHT BASE IN FRONT OF METHODIST CHURCH N. SIDE OF ST. LOUIS STREET. ELEV. 509.23, STA. 104+22.36, 44.36 LT.

LOW PT STA = 212+17.88
 LOW PT ELEV = 502.49
 PVI STA = 212+00.00
 PVI ELEV = 501.28
 A.D. = 3.78%
 K = 68.78
 260.00' V.C.

LEGEND

(Tree symbol)	TREE	(Dashed line symbol)	GUY WIRE
(Shrub symbol)	SHRUB	(Circle with cross symbol)	WATER METER
(Sapling symbol)	SAPLING	(Square with cross symbol)	WATER VALVE
(Mailbox symbol)	MAILBOX	(Square with X symbol)	WARNING POST
(Storm inlet symbol)	STORM INLET	(X-X symbol)	FENCE
(Culvert symbol)	CULVERT	(Line with arrow symbol)	SWALE FLOWLINE
(Telephone pedestal symbol)	TELEPHONE PEDESTAL	(Line with dots symbol)	EDGE OF PAVEMENT
(Cable TV pedestal symbol)	CABLE TV PEDESTAL	(Line with 'OE' symbol)	OVERHEAD ELECTRIC
(Electric pedestal symbol)	ELECTRIC PEDESTAL	(Line with 'UE' symbol)	UNDERGROUND ELECTRIC
(Gas valve symbol)	GAS VALVE	(Line with 'FO' symbol)	UNDERGROUND FIBER OPTIC
(Sign symbol)	SIGN	(Line with 'UT' symbol)	UNDERGROUND TELEPHONE
(Street sign symbol)	STREET SIGN	(Line with 'G' symbol)	UNDERGROUND GAS MAIN
(Roadway/Traffic sign symbol)	ROADWAY/TRAFFIC SIGN	(Line with 'W' symbol)	WATER MAIN
(Power pole symbol)	POWER POLE	(Line with 'SAN' symbol)	SANITARY SEWER
(Proposed storm inlet symbol)	PROPOSED STORM INLET	(Line with arrow symbol)	PROPOSED STORM SEWER