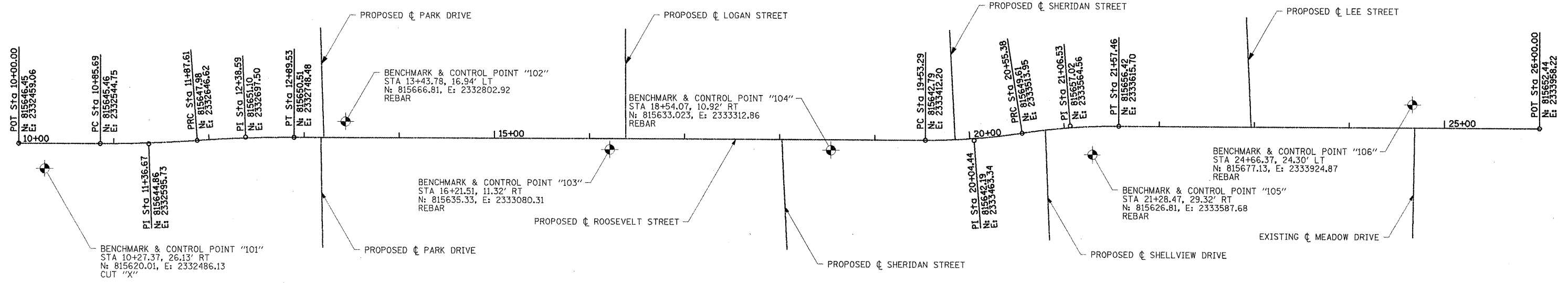
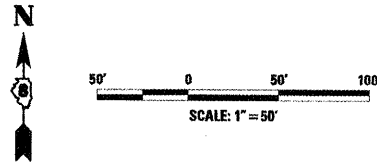


F.A.J. RTE.	SECTION	COUNTY	TOTAL SHEETS	SHEET NO.
8979	05-00017-00-PV	MADISON	37	7
STA. 10+00.00		TO STA. 26+00.00		
FED. ROAD DIST. NO.	ILLINOIS	FEDERAL AID PROJECT		



PROP. CURVE ROOSEVELT-1
 PI STA. = 11+36.67
 $\Delta = 4^{\circ} 10' 16''$ (LT)
 $D = 4^{\circ} 05' 33''$
 $R = 1,400.00'$
 $T = 50.98'$
 $L = 101.92'$
 $E = 0.93'$
 $e = \text{N.C.}$
 $T.R. = \text{N.A.}$
 $S.E. \text{ RUN} = \text{N.A.}$
 $P.C. \text{ STA.} = 10+85.69$
 $P.T. \text{ STA.} = 11+87.61$

PROP. CURVE ROOSEVELT-2
 PI STA. = 12+38.59
 $\Delta = 4^{\circ} 10' 16''$ (RT)
 $D = 4^{\circ} 05' 33''$
 $R = 1,400.00'$
 $T = 50.98'$
 $L = 101.92'$
 $E = 0.93'$
 $e = \text{N.C.}$
 $T.R. = \text{N.A.}$
 $S.E. \text{ RUN} = \text{N.A.}$
 $P.C. \text{ STA.} = 11+87.61$
 $P.T. \text{ STA.} = 12+89.53$

PROP. CURVE ROOSEVELT-3
 PI STA. = 20+04.44
 $\Delta = 8^{\circ} 59' 55''$ (LT)
 $D = 8^{\circ} 48' 53''$
 $R = 650.00'$
 $T = 51.15'$
 $L = 102.09'$
 $E = 2.01'$
 $e = \text{N.C.}$
 $T.R. = \text{N.A.}$
 $S.E. \text{ RUN} = \text{N.A.}$
 $P.C. \text{ STA.} = 19+53.29$
 $P.T. \text{ STA.} = 20+55.38$

PROP. CURVE ROOSEVELT-4
 PI STA. = 21+06.53
 $\Delta = 8^{\circ} 59' 55''$ (RT)
 $D = 8^{\circ} 48' 53''$
 $R = 650.00'$
 $T = 51.15'$
 $L = 102.09'$
 $E = 2.01'$
 $e = \text{N.C.}$
 $T.R. = \text{N.A.}$
 $S.E. \text{ RUN} = \text{N.A.}$
 $P.C. \text{ STA.} = 20+55.38$
 $P.T. \text{ STA.} = 21+57.46$

PLOT DATE = 1/27/2011
 FILE NAME = I:\beshelto\0546803\Draw\Sheet\phase 1\087_ALIGNMENT.dgn
 PLOT SCALE = 1/8" = 50'
 USER NAME = Rusty Miller

REVISIONS	
NAME	DATE

ILLINOIS DEPARTMENT OF TRANSPORTATION

ALIGNMENT AND BENCHMARKS

SCALE: VERT. N.A.
 HORIZ. 1" = 50'
 DATE 1/27/2011

DRAWN BY RJM, AJK
 CHECKED BY JWB