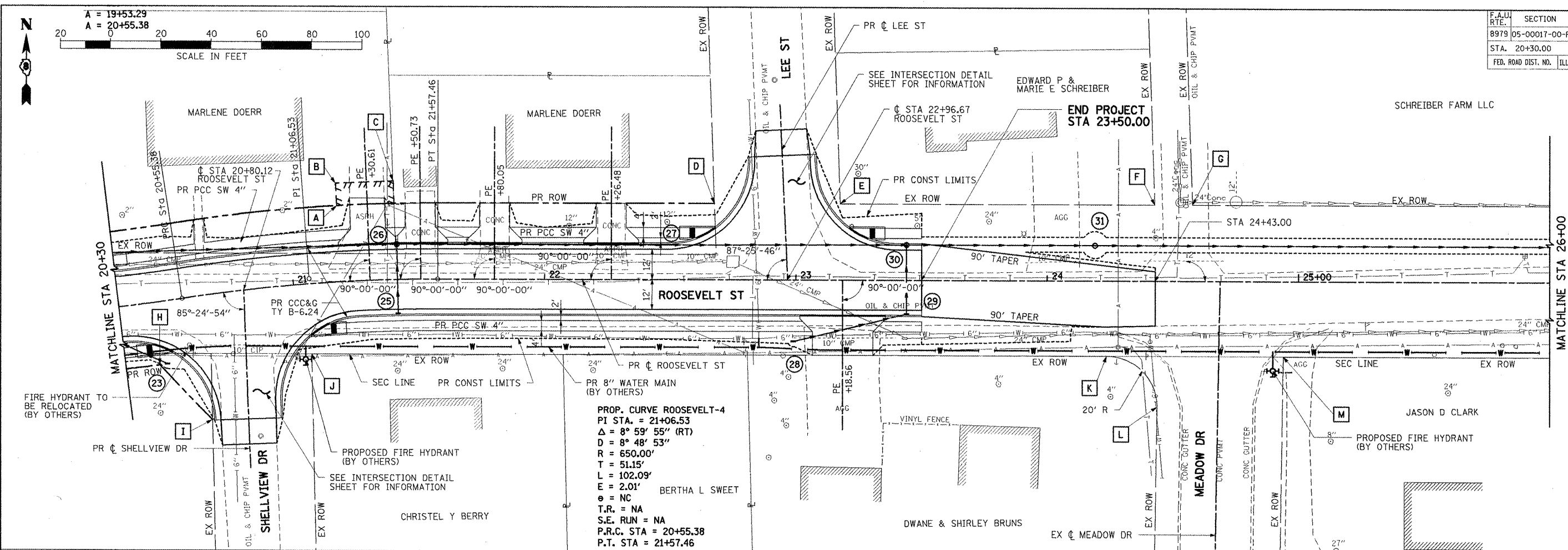
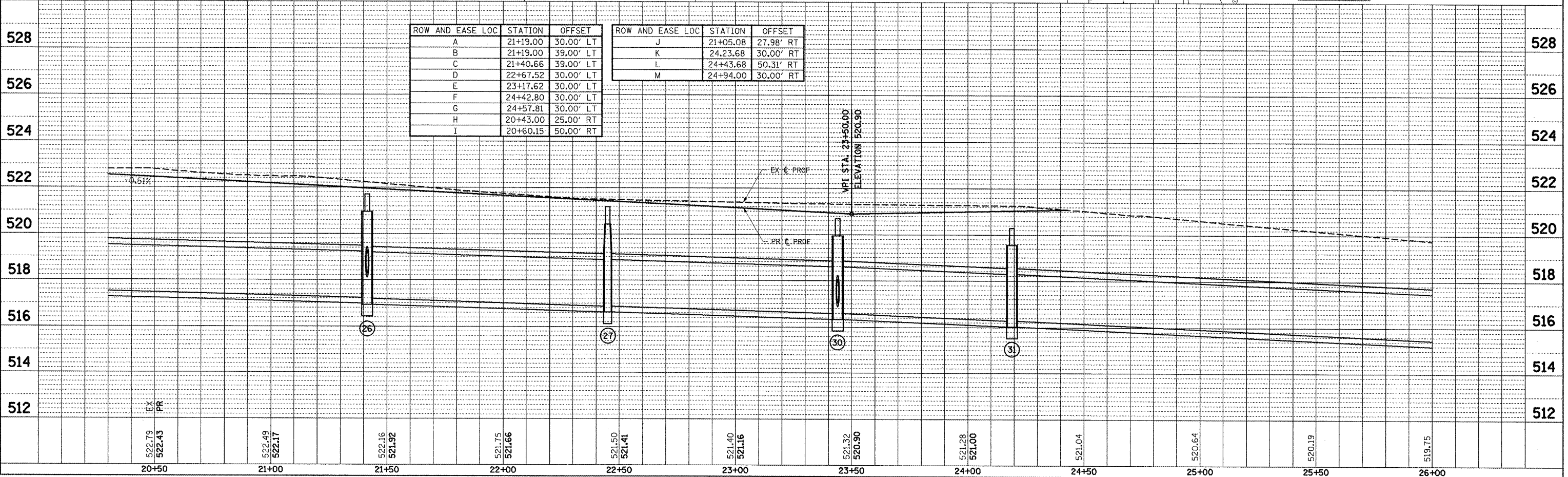


F.A.U. RTE.	SECTION	COUNTY	TOTAL SHEETS	SHEET NO.
8979	05-00017-00-PV	MADISON	37	10
STA. 20+30.00		TO STA. 26+00.00		
FED. ROAD DIST. NO.	ILLINOIS	FEDERAL AID PROJECT		



PROP. CURVE ROOSEVELT-4
 PI STA. = 21+06.53
 $\Delta = 8^\circ 59' 55''$ (RT)
 $D = 8' 48' 53''$
 $R = 650.00'$
 $T = 51.15'$
 $L = 102.09'$
 $E = 2.01'$
 $\theta = NC$
 $T.R. = NA$
 $S.E. RUN = NA$
 $P.R.C. STA = 20+55.38$
 $P.T. STA = 21+57.46$

ROW AND EASE LOC	STATION	OFFSET	ROW AND EASE LOC	STATION	OFFSET
A	21+19.00	30.00' LT	J	21+05.08	27.98' RT
B	21+19.00	39.00' LT	K	24.23.68	30.00' RT
C	21+40.66	39.00' LT	L	24+43.68	50.31' RT
D	22+67.52	30.00' LT	M	24+94.00	30.00' RT
E	23+17.62	30.00' LT			
F	24+42.80	30.00' LT			
G	24+57.81	30.00' LT			
H	20+43.00	25.00' RT			
I	20+60.15	50.00' RT			



PLAN & PROFILE: ROOSEVELT STREET - STA 20+30.00 TO STA 26+00.00

DATE: _____ BY: _____
 PLAN: _____
 NOTE BOOK: _____
 NO. _____

DATE: _____ BY: _____
 PROFILE: _____
 NOTE BOOK: _____
 NO. _____

PLOT DATE: 1/27/2011
 FILE NAME: I:\Projects\11\97458\11\97458\11\97458\11\97458.dgn
 PLOT SCALE: 1/4" = 1'-0"
 USER NAME: R. M. Miller