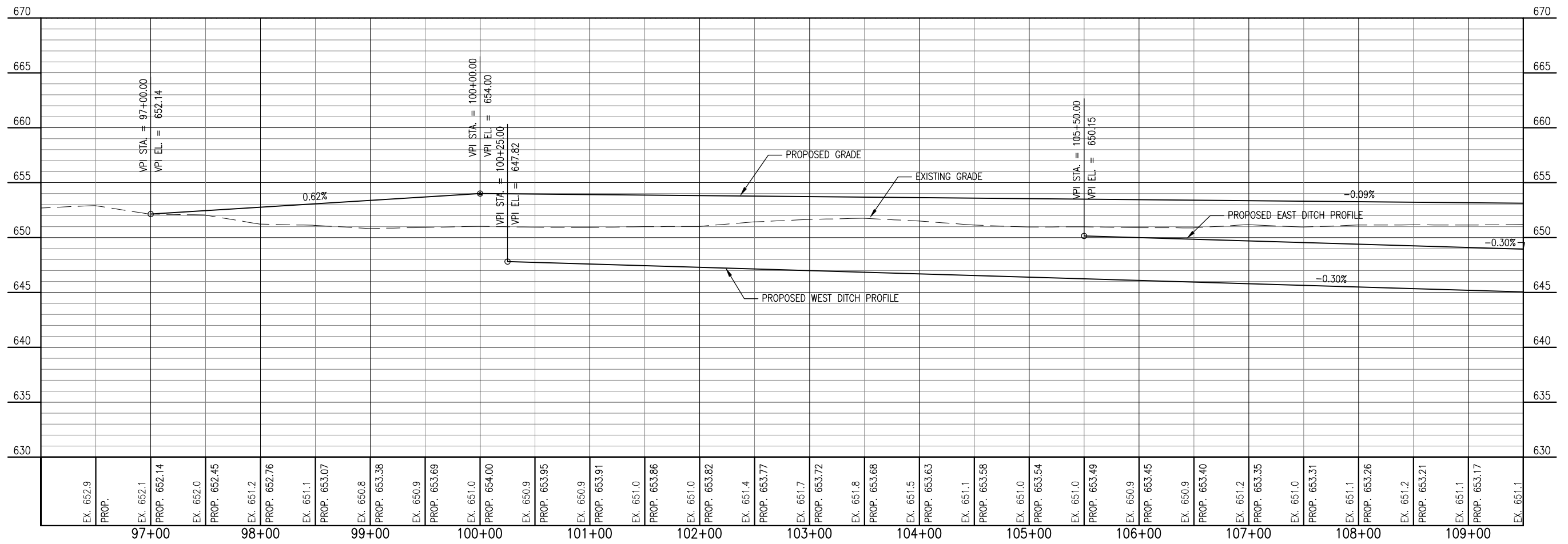
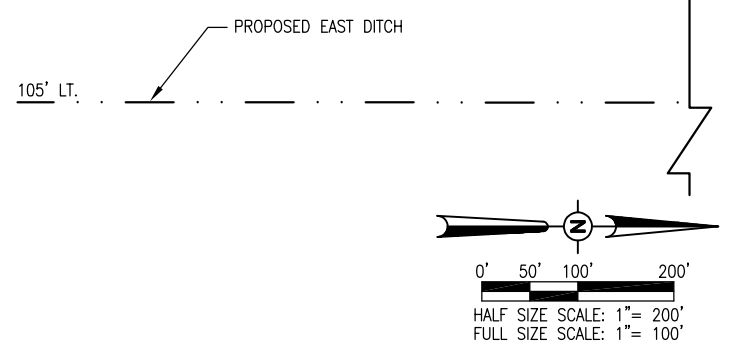
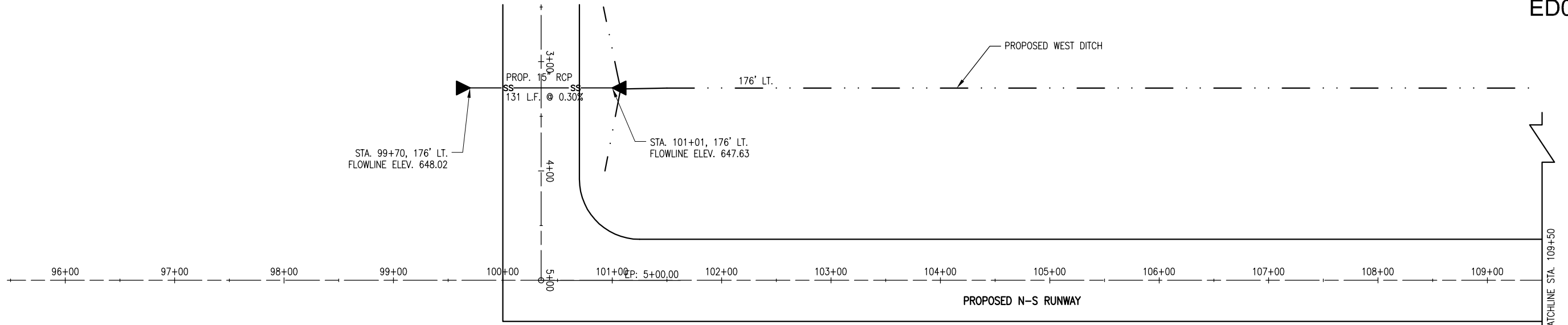


MAR 11, 2011 10:17 AM RINKED0461 C:\PWISE_WORK\DO_NOT_DELETE\DMST8063\18-701PMP.DWG

ED017



REVISION	DATE

EDGAR COUNTY AIRPORT
PARIS, ILLINOIS
A.I.P. PROJ.: 3-17-0077-B13
IL PROJ.: PRG-4018

Hanson Proj. No. 10A0053	BAK	01/11/11
Filename R-701PMP.DWG	BAK	01/11/11
Scale 1" = 50'		
Date 03/10/11		
LAYOUT		
DRAWN		
REVIEWED		

HANSON
Professional Services Inc. 2011
1526 South Sixth Street
Springfield, Illinois 62703-2886
www.hanson-inc.com
Offices Nationwide

CONSTRUCT CROSSWIND
RUNWAY 18-36
RWY 18-36 PLAN AND
PROFILE - STA. 96+00.00
TO STA. 109+50.00