

STATE OF ILLINOIS
DEPARTMENT OF TRANSPORTATION

| | | | | |
|---------------------|------------|--------------------|--------------|-----------|
| F.A.P. RTE. | SECTION | COUNTY | TOTAL SHEETS | SHEET NO. |
| 370 | 2017-060TS | COOK | 24 | 1 |
| FED. ROAD DIST. NO. | ILLINOIS | CONTRACT NO. 62G03 | | |

PROPOSED
HIGHWAY PLANS

FAP 370 – WESTERN AVE AT 139TH ST
SECTION: 2017-060TS
PROJECT: HSIP-HUBG(930)
TRAFFIC SIGNAL MODERNIZATION AND
ADA RAMP INSTALLATION
COOK COUNTY
C-91-103-18

FOR INDEX OF SHEETS, SEE SHEET NO. 2

THIS PROJECT IS LOCATED IN THE VILLAGE OF POSEN,
VILLAGE OF DIXMOOR, AND CITY OF BLUE ISLAND.

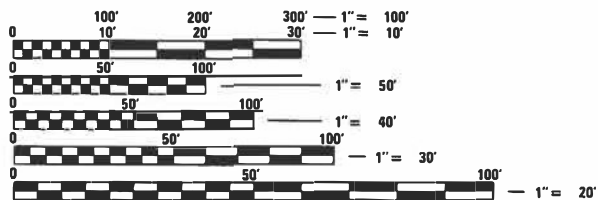
TRAFFIC DATA

WESTERN AVENUE

ADT (2018) = 16050 VPD
POSTED SPEED = 35 MPH

139TH STREET

ADT (2018) = 9750 VPD
POSTED SPEED = 35 MPH



FULL SIZE PLANS HAVE BEEN PREPARED USING STANDARD
ENGINEERING SCALES. REDUCED SIZED PLANS WILL NOT
CONFORM TO STANDARD SCALES. IN MAKING MEASUREMENTS
ON REDUCED PLANS, THE ABOVE SCALES MAY BE USED.

J.U.L.I.E.
JOINT UTILITY LOCATION INFORMATION FOR EXCAVATION
1-800-892-0123
OR 811

PROJECT ENGINEER: IOVAN PLASCENCIA
PROJECT MANAGER: KAMIL KOBYLKA

CONTRACT NO. 62G03



PROJECT
LOCATION



T 3 6 N

R 13 E AND R 14 E

BREMEN AND THORNTON TOWNSHIPS



STATE OF ILLINOIS
DEPARTMENT OF TRANSPORTATION
DIVISION OF HIGHWAYS

SUBMITTED Feb 4 2022
Jim Ross
DEPUTY DIRECTOR OF HIGHWAYS, REGION ENGINEER

March 25 2022
[Signature]
ENGINEER OF DESIGN AND ENVIRONMENT

March 23 2022
Stephen M. Lavin
DIRECTOR OF HIGHWAYS PROJECT IMPLEMENTATION

PRINTED BY THE AUTHORITY
OF THE STATE OF ILLINOIS

INDEX OF SHEETS

| SHT. NO. | DESCRIPTION |
|-----------------------|---|
| 1 | COVER SHEET |
| 2 | INDEX OF SHEETS, HIGHWAY STANDARDS, AND GENERAL NOTES |
| 3-7 | SUMMARY OF QUANTITIES |
| 8-15 | DISTRICT ONE STANDARD TRAFFIC SIGNAL DESIGN DETAILS |
| TRAFFIC SIGNAL PLANS: | |
| 16-20 | TS 5880: WESTERN AVE AT 139TH ST |
| ADA PLANS: | |
| 21-22 | TS 5880: WESTERN AVE AT 139TH ST |
| 23 | TRAFFIC CONTROL AND PROTECTION FOR SIDE ROADS, INTERSECTIONS, AND DRIVEWAYS (TC-10) |
| 24 | ARTERIAL ROAD INFORMATION SIGN (TC-22) |

HIGHWAY STANDARDS

| STD. NO. | TITLE |
|-----------|--|
| 000001-08 | STANDARD SYMBOLS, ABBREVIATIONS, AND PATTERNS |
| 001001-02 | AREAS OF REINFORCEMENT BARS |
| 001006 | DECIMAL OF AN INCH AND OF A FOOT |
| 424001-11 | PERPENDICULAR CURB RAMPS FOR SIDEWALKS |
| 424006-05 | DIAGONAL CURB RAMPS FOR SIDEWALKS |
| 424011-04 | CORNER PARALLEL CURB RAMPS FOR SIDEWALKS |
| 606001-08 | CONCRETE CURB TYPE B AND COMBINATION CURB AND GUTTER |
| 701001-02 | OFF-RD OPERATIONS, 2L, 2W MORE THAN 15' (4.5m) AWAY |
| 701006-05 | OFF-RD OPERATIONS, 2L, 2W, 15' (4.5m) TO 24" (600mm) FROM PAVEMENT EDGE |
| 701101-05 | OFF-RD OPERATIONS, MULTILANE, 15' (4.5 m) TO 24" (600 mm) FROM PAVEMENT EDGE |
| 701106-02 | OFF-RD OPERATIONS, MULTILANE, MORE THAN 15' (4.5m) AWAY |
| 701606-10 | URBAN SINGLE LANE CLOSURE, MULTILANE, 2W WITH MOUNTABLE MEDIAN |
| 701611-01 | URBAN HALF ROAD CLOSURE, MULTILANE, 2W WITH MOUNTABLE MEDIAN |
| 701701-10 | URBAN LANE CLOSURE, MULTILANE INTERSECTION |
| 701801-06 | SIDEWALK, CORNER OR CROSSWALK CLOSURE |
| 701901-08 | TRAFFIC CONTROL DEVICES |
| 720001-01 | SIGN PANEL MOUNTING DETAILS |
| 814001-03 | HANDHOLES |
| 814006-03 | DOUBLE HANDHOLES |
| 862001-01 | UNINTERRUPTABLE POWER SUPPLY (UPS) |
| 873001-02 | TRAFFIC SIGNAL GROUNDING & BONDING |
| 877001-08 | STEEL MAST ARM ASSEMBLY AND POLE 16' THROUGH 55' |
| 878001-11 | CONCRETE FOUNDATION DETAILS |
| 880001-01 | SPAN WIRE MOUNTED SIGNALS AND FLASHING BEACON INSTALLATION |
| 880006-01 | TRAFFIC SIGNAL MOUNTING DETAILS |
| 886001-01 | DETECTOR LOOP INSTALLATIONS |

GENERAL NOTES

BEFORE STARTING ANY EXCAVATION. THE CONTRACTOR SHALL CALL "J.U.L.I.E.," AT (800) 892-0123 OR 811 FOR FIELD LOCATIONS OF BURIED ELECTRIC, TELEPHONE AND GAS UTILITIES. 48 HOUR NOTIFICATION IS REQUIRED.

THE CONTRACTOR SHALL CONTACT THE TRAFFIC CONTROL SUPERVISOR AT KALPANA.KANNAN-HOSADURGA@ILLINOIS.GOV, 72 HOURS IN ADVANCE OF BEGINNING WORK.

IT SHALL BE THE CONTRACTOR'S RESPONSIBILITY TO VERIFY ALL DIMENSIONS AND CONDITIONS EXISTING IN THE FIELD PRIOR TO ORDERING MATERIALS AND BEGINNING CONSTRUCTION. THIS SHALL INCLUDE LOCATING THE MAST ARM FOUNDATIONS AND VERIFYING THE MAST ARMS LENGTHS.

THE EXACT LOCATION OF ALL UTILITIES SHALL BE FIELD VERIFIED BY THE CONTRACTOR BEFORE ORDERING ANY MATERIALS AND STARTING ANY WORK. FOR LOCATIONS OF UTILITIES. LOCALLY OWNED EQUIPMENT, LEASED ENFORCEMENT CAMERA SYSTEM FACILITIES AND IDOT UNDERGROUND FACILITIES. CONTACT THE LOCAL COUNTIES, MUNICIPALITIES AND IDOT FOR LOCATES. THE CONTRACTOR SHALL CALL "JULIE" AT (800) 892-0123 OR 811, IN THE CITY OF CHICAGO CONTACT DIGGER AT (312) 744-7000 FOR FIELD LOCATIONS OF BURIED UTILITIES (48 HOURS NOTIFICATION REQUIRED).

IF THIS CONTRACT REQUIRES THE SERVICES OF AN ELECTRICAL CONTRACTOR. THE CONTRACTOR SHALL BE RESPONSIBLE AT HIS/HER OWN EXPENSE FOR LOCATING EXISTING IDOT ELECTRICAL FACILITIES PRIOR TO PERFORMING ANY WORK. IF THIS CONTRACT DOES NOT REQUIRE THE SERVICES OF AN ELECTRICAL CONTRACTOR. THE CONTRACTOR MAY REQUEST ONE FREE LOCATE FOR EXISTING IDOT ELECTRICAL FACILITIES FROM THE DISTRICT ONE ELECTRICAL MAINTENANCE CONTRACTOR PRIOR TO THE START OF ANY WORK. ADDITIONAL REQUESTS MAY BE AT THE EXPENSE OF THE CONTRACTOR. THE LOCATION OF UNDERGROUND TRAFFIC FACILITIES DOES NOT RELIEVE THE CONTRACTOR OF THEIR RESPONSIBILITY TO REPAIR ANY FACILITIES DAMAGED DURING CONSTRUCTION AT THEIR EXPENSE.

THE CONTRACTOR SHALL CHECK THE PROPOSED TRAFFIC SIGNAL EQUIPMENT LOCATIONS FOR OVERHEAD UTILITY CONFLICTS. THE CONTRACTOR SHALL COORDINATE ANY CONFLICTS WITH THE UTILITY COMPANIES AND RESIDENT ENGINEER BEFORE ORDERING MATERIALS.

THE CONTRACTOR SHALL COORDINATE CONSTRUCTION ACTIVITIES WITH UTILITY COMPANIES, LOCAL GOVERNMENT AGENCIES AND IDOT.

RESTORATION OF THE TRAFFIC SIGNAL WORK AREA SHALL BE INCLUDED IN THE RELATED PAY ITEM SUCH AS FOUNDATION, CONDUIT, HANDHOLE, ETC. , AND NO EXTRA COMPENSATION SHALL BE ALLOWED. ALL ROADWAY SURFACES SUCH AS SHOULDERS, MEDIAN, SIDEWALKS, PAVEMENT, ETC. SHALL BE REPLACED IN KIND. ALL DAMAGE TO MOWED LAWNS SHALL BE REPLACED WITH AN APPROVED SOD, AND ALL DAMAGED TO UNMOWED FIELDS SHALL BE SEEDED IN ACCORDANCE WITH STANDARD SPECIFICATIONS 252 AND 250 RESPECTIVELY.

THE CONTRACTOR SHALL BE RESPONSIBLE FOR THE PROTECTION OF ALL UNDERGROUND AND SURFACE UTILITIES EVEN THOUGH THEY MAY NOT BE SHOWN ON THE PLANS. ANY UTILITY THAT IS DAMAGED DURING CONSTRUCTION SHALL BE RESTORED TO A CONDITION EQUAL TO THAT EXISTING BEFORE THE DAMAGE INCURRED. THIS WORK SHALL BE AT THE CONTRACTOR'S EXPENSE.

PARTIAL PAYMENT AS DESCRIBED IN ARTICLE 109.07(b) OF THE STANDARD SPECIFICATIONS WILL NOT BE ALLOWED FOR ITEMS INCLUDED IN THIS CONTRACT.

LOCATIONS WITH PEDESTRIAN EQUIPMENT HAVE BEEN DESIGNED TO BE ADA COMPLIANT. ANY DEVIATION FROM THE THE PLANS FOR TRAFFIC SIGNAL MAST ARM/POSTS THAT HAVE PEDESTRIAN EQUIPMENT WILL HAVE TO BE APPROVED BY THE ENGINEER TO INSURE ADA COMPLIANCE.

K:\PROJECTS\Projects 2021\21-139-485-Contract 62603 - Western Ave at 139th St\DOT\CADD\Sheets\02_Standards List.dgn

| | | | | | | | | | | | | | |
|---|-----------------------------|-------------------|-----------|---|---|--|--|---|---------|--------|--------------|-----------|------|
|  GANDHI AND ASSOCIATES, INC. ENGINEERS AND PLANNERS 5035 N. NORTHWEST HIGHWAY SUITE 205 CHICAGO, ILLINOIS 60630 TEL: (773) 774-5900 | USER NAME = *USER* | DESIGNED - AV, EA | REVISED - | STATE OF ILLINOIS DEPARTMENT OF TRANSPORTATION | INDEX OF SHEETS, HIGHWAY STANDARDS & GENERAL NOTES | | | F.A.P. RTE. | SECTION | COUNTY | TOTAL SHEETS | SHEET NO. | |
| | DRAWN - EA, AV | REVISED - | 370 | | | | | 2017-060TS | COOK | 24 | 2 | | |
| | PLOT SCALE = 40.0000' / in. | CHECKED - MS | REVISED - | | SCALE: N.T.S. | | | SHEET NO. | OF | SHEETS | STA. | TO | STA. |
| | PLOT DATE = *DATE* | DATE - 2/4/2022 | REVISED - | | CONTRACT NO. 62G03 | | | FED. ROAD DIST. NO. [ILLINOIS] FED. AID PROJECT | | | | | |

FILE NAME: K:\PROJECTS\Projects\2021\21-139-485-Contract 62G03 - Western Ave at 139th St\DOT\CADD\Sheets\03-500-Pl.dgn

| CODE NO. | ITEM | UNIT | TOTAL QUANTITY | CONSTRUCTION CODE | | |
|------------|--|--------|----------------|--------------------------|--------------------------|------------|
| | | | | 90% FEDERAL 10% STATE | 90% FEDERAL 10% STATE | 100% POSEN |
| | | | | TRAFFIC SIGNALS | ROADWAY | EVP |
| | | | | 0021 | 0004 | 0021 |
| | | | | URBAN | URBAN | URBAN |
| 20200100 | EARTH EXCAVATION | CU YD | 10 | - | 10 | |
| 21101615 | TOPSOIL FURNISH AND PLACE, 4" | SQ YD | 8 | - | 8 | |
| 25200100 | SODDING | SQ YD | 8 | - | 8 | |
| 42001300 | PROTECTIVE COAT | SQ YD | 112 | - | 112 | |
| 42400200 | PORTLAND CEMENT CONCRETE SIDEWALK 5 INCH | SQ FT | 1,010 | - | 1,010 | |
| 42400800 | DETECTABLE WARNINGS | SQ FT | 88 | - | 88 | |
| 44000600 | SIDEWALK REMOVAL | SQ FT | 864 | - | 864 | |
| * 66900200 | NON-SPECIAL WASTE DISPOSAL | CU YD | 35 | 35 | | |
| * 66900530 | SOIL DISPOSAL ANALYSIS | EACH | 1 | 1 | | |
| * 66901001 | REGULATED SUBSTANCES PRE-CONSTRUCTION PLAN | L SUM | 1 | 1 | | |
| * 66901003 | REGULATED SUBSTANCES FINAL CONSTRUCTION REPORT | L SUM | 1 | 1 | | |
| * 66901006 | REGULATED SUBSTANCES MONITORING | CAL DA | 2 | 2 | | |
| 67000400 | ENGINEER'S FIELD OFFICE, TYPE A | CAL MO | 6 | 6 | | |
| 67100100 | MOBILIZATION | L SUM | 1 | 1 | | |

*** SPECIALTY ITEM**



GANDHI AND ASSOCIATES, INC.
 ENGINEERS AND PLANNERS
 5015 N. NORTHWEST HIGHWAY
 SUITE 205
 CHICAGO, ILLINOIS 60630 TEL: (773) 774-5900

| | | |
|-----------------------------|-------------------|-----------|
| USER NAME = *USER* | DESIGNED - AV, EA | REVISED - |
| | DRAWN - EA, AV | REVISED - |
| PLOT SCALE = 48.0000' / in. | CHECKED - MS | REVISED - |
| PLOT DATE = *DATE* | DATE - 2/4/2022 | REVISED - |

**STATE OF ILLINOIS
 DEPARTMENT OF TRANSPORTATION**

**SUMMARY OF QUANTITIES
 (SHEET 1 OF 5)**

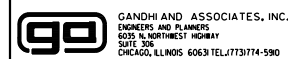
SCALE: N.T.S. SHEET NO. OF SHEETS STA. TO STA.

| F.A.P. RTE. | SECTION | COUNTY | TOTAL SHEETS | SHEET NO. |
|-----------------------|------------|--------|---------------------------|-----------|
| 370 | 2017-060TS | COOK | 24 | 3 |
| FED. ROAD DIST. NO. 1 | | | ILLINOIS FED. AID PROJECT | |
| | | | CONTRACT NO. 62G03 | |

FILE NAME = K:\PROJECTS\Projects 2021\21-139-495-Contract 62G03 - Western Ave at 139th St\DOT\CADD\Sheets\04_500-02.dgn

| CODE NO. | ITEM | UNIT | TOTAL QUANTITY | CONSTRUCTION CODE | | |
|------------|---|-------|----------------|--------------------------|--------------------------|------------|
| | | | | 90% FEDERAL 10% STATE | 90% FEDERAL 10% STATE | 100% POSEN |
| | | | | TRAFFIC SIGNALS | ROADWAY | EVP |
| | | | | 0021 | 0004 | 0021 |
| | | | | URBAN | URBAN | URBAN |
| 70102625 | TRAFFIC CONTROL AND PROTECTION, STANDARD 701606 | L SUM | 1 | 1 | | |
| 70102634 | TRAFFIC CONTROL AND PROTECTION, STANDARD 701611 | L SUM | 1 | 1 | | |
| 70102635 | TRAFFIC CONTROL AND PROTECTION, STANDARD 701701 | L SUM | 1 | 1 | | |
| 70102640 | TRAFFIC CONTROL AND PROTECTION, STANDARD 701801 | L SUM | 1 | 1 | | |
| * 72000100 | SIGN PANEL - TYPE 1 | SQ FT | 28.5 | 28.5 | | |
| 81028200 | UNDERGROUND CONDUIT, GALVANIZED STEEL, 2" DIA. | FOOT | 709 | 709 | | |
| 81028220 | UNDERGROUND CONDUIT, GALVANIZED STEEL, 3" DIA. | FOOT | 135 | 135 | | |
| 81028240 | UNDERGROUND CONDUIT, GALVANIZED STEEL, 4" DIA. | FOOT | 370 | 370 | | |
| 81400100 | HANDHOLE | EACH | 5 | 5 | | |
| 81400300 | DOUBLE HANDHOLE | EACH | 2 | 2 | | |
| 87301215 | ELECTRIC CABLE IN CONDUIT, SIGNAL NO. 14 2C | FOOT | 1,128 | 1,128 | | |
| 87301225 | ELECTRIC CABLE IN CONDUIT, SIGNAL NO. 14 3C | FOOT | 1,474 | 1,474 | | |
| 87301245 | ELECTRIC CABLE IN CONDUIT, SIGNAL NO. 14 5C | FOOT | 1,980 | 1,980 | | |
| 87301255 | ELECTRIC CABLE IN CONDUIT, SIGNAL NO. 14 7C | FOOT | 662 | 662 | | |

*** SPECIALTY ITEM**



| | | |
|-----------------------------|-------------------|-----------|
| USER NAME = \$USER* | DESIGNED - AV, EA | REVISED - |
| | DRAWN - EA, AV | REVISED - |
| PLOT SCALE = 40.0000' / in. | CHECKED - MS | REVISED - |
| PLOT DATE = \$DATE* | DATE - 2/4/2022 | REVISED - |

**STATE OF ILLINOIS
DEPARTMENT OF TRANSPORTATION**

**SUMMARY OF QUANTITIES
(SHEET 2 OF 5)**

| | | | | | | |
|---------------|-----------|----|--------|------|----|------|
| SCALE: N.T.S. | SHEET NO. | OF | SHEETS | STA. | TO | STA. |
|---------------|-----------|----|--------|------|----|------|

| F.A.P. RTE. | SECTION | COUNTY | TOTAL SHEETS | SHEET NO. |
|--------------------|------------|--------|---|-----------|
| 370 | 2017-060TS | COOK | 24 | 4 |
| CONTRACT NO. 62G03 | | | FED. ROAD DIST. NO. - [ILLINOIS] FED. AID PROJECT | |

FILE NAME = K:\PROJECTS\Projects 2021\21-139-485-Contract 62G03 - Western Ave at 139th St\DOT\CADD\Sheets\05-500-03.dgn

| CODE NO. | ITEM | UNIT | TOTAL QUANTITY | CONSTRUCTION CODE | | |
|----------|--|------|----------------|--------------------------|--------------------------|------------|
| | | | | 90% FEDERAL 10% STATE | 90% FEDERAL 10% STATE | 100% POSEN |
| | | | | TRAFFIC SIGNALS | ROADWAY | EVP |
| | | | | 0021 | 0004 | 0021 |
| | | | | URBAN | URBAN | URBAN |
| 87301305 | ELECTRIC CABLE IN CONDUIT, LEAD-IN, NO. 14 1 PAIR | FOOT | 1,556 | 1,556 | | |
| 87301805 | ELECTRIC CABLE IN CONDUIT, SERVICE, NO. 6 2 C | FOOT | 223 | 223 | | |
| 87301900 | ELECTRIC CABLE IN CONDUIT, EQUIPMENT GROUNDING CONDUCTOR, NO. 6 1C | FOOT | 925 | 925 | | |
| 87502500 | TRAFFIC SIGNAL POST, GALVANIZED STEEL 16 FT. | EACH | 4 | 4 | | |
| 87700170 | STEEL MAST ARM ASSEMBLY AND POLE, 26 FT. | EACH | 2 | 2 | | |
| 87700180 | STEEL MAST ARM ASSEMBLY AND POLE, 28 FT. | EACH | 1 | 1 | | |
| 87700200 | STEEL MAST ARM ASSEMBLY AND POLE, 32 FT. | EACH | 1 | 1 | | |
| 87800100 | CONCRETE FOUNDATION, TYPE A | FOOT | 20 | 20 | | |
| 87800150 | CONCRETE FOUNDATION, TYPE C | FOOT | 4 | 4 | | |
| 87800400 | CONCRETE FOUNDATION, TYPE E 30-INCH DIAMETER | FOOT | 43.5 | 43.5 | | |
| 88030020 | SIGNAL HEAD, LED, 1-FACE, 3-SECTION, MAST ARM MOUNTED | EACH | 6 | 6 | | |
| 88030050 | SIGNAL HEAD, LED, 1-FACE, 3-SECTION, BRACKET MOUNTED | EACH | 6 | 6 | | |
| 88030100 | SIGNAL HEAD, LED, 1-FACE, 5-SECTION, BRACKET MOUNTED | EACH | 2 | 2 | | |
| 88030110 | SIGNAL HEAD, LED, 1-FACE, 5-SECTION, MAST ARM MOUNTED | EACH | 2 | 2 | | |



| | | |
|-----------------------------|-------------------|-----------|
| USER NAME = \$USER\$ | DESIGNED - AV, EA | REVISED - |
| | DRAWN - EA, AV | REVISED - |
| PLOT SCALE = 40.0000' / in. | CHECKED - MS | REVISED - |
| PLOT DATE = \$DATE\$ | DATE - 2/4/2022 | REVISED - |

**STATE OF ILLINOIS
DEPARTMENT OF TRANSPORTATION**

| | | | |
|---|-----------|-----------|--------------|
| SUMMARY OF QUANTITIES (SHEET 3 OF 5) | | | |
| SCALE: N.T.S. | SHEET NO. | OF SHEETS | STA. TO STA. |

| | | | | |
|--------------------|------------|--------|---|-----------|
| F.A.P. RTE. | SECTION | COUNTY | TOTAL SHEETS | SHEET NO. |
| 370 | 2017-060TS | COOK | 24 | 5 |
| CONTRACT NO. 62G03 | | | FED. ROAD DIST. NO. - ILLINOIS FED. AID PROJECT | |

K:\PROJECTS\Projects 2021\21-139-485-Contract 62G03 - Western Ave at 139th St\DOT\CADD\Sheets\06-500-04.dgn

| CODE NO. | ITEM | UNIT | TOTAL QUANTITY | CONSTRUCTION CODE | | |
|----------|---|-------|----------------|--------------------------|--------------------------|---------------|
| | | | | 90% FEDERAL 10% STATE | 90% FEDERAL 10% STATE | 100% POSEN |
| | | | | TRAFFIC SIGNALS | ROADWAY | EVP |
| | | | | 0021 URBAN | 0004 URBAN | 0021 URBAN |
| 88102717 | PEDESTRIAN SIGNAL HEAD, LED, 1-FACE, BRACKET MOUNTED WITH COUNTDOWN TIMER | EACH | 8 | 8 | | |
| 88200410 | TRAFFIC SIGNAL BACKPLATE, LOUVERED, FORMED PLASTIC | EACH | 8 | 8 | | |
| 88500100 | INDUCTIVE LOOP DETECTOR | EACH | 4 | 4 | | |
| 88600100 | DETECTOR LOOP, TYPE I | FOOT | 132 | 132 | | |
| 89000100 | TEMPORARY TRAFFIC SIGNAL INSTALLATION | EACH | 1 | 1 | | |
| 89501400 | RELOCATE EXISTING EMERGENCY VEHICLE PRIORITY SYSTEM, DETECTOR UNIT | EACH | 2 | - | | 2 |
| 89501410 | RELOCATE EXISTING EMERGENCY VEHICLE PRIORITY SYSTEM, PHASING UNIT | EACH | 1 | - | | 1 |
| 89502375 | REMOVE EXISTING TRAFFIC SIGNAL EQUIPMENT | EACH | 1 | 1 | | |
| 89502380 | REMOVE EXISTING HANDHOLE | EACH | 8 | 8 | | |
| 89502382 | REMOVE EXISTING DOUBLE HANDHOLE | EACH | 1 | 1 | | |
| 89502385 | REMOVE EXISTING CONCRETE FOUNDATION | EACH | 9 | 9 | | |
| X0320050 | CONSTRUCTION LAYOUT (SPECIAL) | L SUM | 1 | - | 1 | |
| X0324085 | EMERGENCY VEHICLE PRIORITY SYSTEM LINE SENSOR CABLE, NO. 20 3/C | FOOT | 290 | - | | 290 |
| X1400107 | FULL-ACTUATED CONTROLLER AND TYPE SUPER P CABINET | EACH | 1 | 1 | | |

| | | |
|-----------------------------|-------------------|-----------|
| USER NAME = \$USER\$ | DESIGNED - AV, EA | REVISED - |
| | DRAWN - EA, AV | REVISED - |
| PLOT SCALE = 40.0000' / in. | CHECKED - MS | REVISED - |
| PLOT DATE = \$DATE\$ | DATE - 2/4/2022 | REVISED - |

**STATE OF ILLINOIS
DEPARTMENT OF TRANSPORTATION**

**SUMMARY OF QUANTITIES
(SHEET 4 OF 5)**

SCALE: N.T.S. SHEET NO. OF SHEETS STA. TO STA.

| F.A.P. RTE. | SECTION | COUNTY | TOTAL SHEETS | SHEET NO. |
|---|------------|--------|--------------|-----------|
| 370 | 2017-060TS | COOK | 24 | 6 |
| CONTRACT NO. 62G03 | | | | |
| FED. ROAD DIST. NO. - [ILLINOIS] FED. AID PROJECT | | | | |

FILE NAME: K:\PROJECTS\Projects\2021\21-139-495-Contract 62G03 - Western Ave at 139th St\DOT\CADD\Sheets\06-500-05.dgn

| CODE NO. | ITEM | UNIT | TOTAL QUANTITY | CONSTRUCTION CODE | | |
|------------|--|-------|----------------|--------------------------|--------------------------|------------|
| | | | | 90% FEDERAL 10% STATE | 90% FEDERAL 10% STATE | 100% POSEN |
| | | | | TRAFFIC SIGNALS | ROADWAY | EVP |
| | | | | 0021 | 0004 | 0021 |
| | | | | URBAN | URBAN | URBAN |
| X1400150 | SERVICE INSTALLATION, GROUND MOUNTED, METERED | EACH | 1 | 1 | | |
| X1400367 | PEDESTRIAN SIGNAL POST, 10 FT | EACH | 2 | 2 | | |
| X1400388 | VIDEO VEHICLE DETECTION SYSTEM, SINGLE APPROACH | EACH | 2 | 2 | | |
| X8620200 | UNINTERRUPTABLE POWER SUPPLY, SPECIAL | EACH | 1 | 1 | | |
| X8760200 | ACCESSIBLE PEDESTRIAN SIGNALS | EACH | 8 | 8 | | |
| X8780012 | CONCRETE FOUNDATION, TYPE A 12-INCH DIAMETER | FOOT | 8 | 8 | | |
| Z0004562 | COMBINATION CONCRETE CURB AND GUTTER REMOVAL AND REPLACEMENT | FOOT | 111 | - | 111 | |
| Z0030850 | TEMPORARY INFORMATION SIGNING | SQ FT | 51.4 | 51.4 | | |
| Z0073510 | TEMPORARY TRAFFIC SIGNAL TIMING | EACH | 1 | 1 | | |
| Ø Z0076600 | TRAINEES | HOURS | 500 | 500 | | |
| Ø Z0076604 | TRAINEES - TRAINING PROGRAM GRADUTE | HOURS | 500 | 500 | | |
| | | | | | | |
| | | | | | | |
| | | | | | | |
| | | | | | | |
| | | | | | | |
| | | | | | | |
| | | | | | | |
| | | | | | | |
| | | | | | | |



GANDHI AND ASSOCIATES, INC.
ENGINEERS AND PLANNERS
5015 N. NORTHWEST HIGHWAY
SUITE 205
CHICAGO, ILLINOIS 60630 TEL: (773) 774-5900

| | | |
|-----------------------------|-------------------|-----------|
| USER NAME = *USER* | DESIGNED - AV, EA | REVISED - |
| DRAWN - EA, AV | CHECKED - MS | REVISED - |
| PLOT SCALE = 48.0000' / in. | DATE - 2/4/2022 | REVISED - |
| PLOT DATE = *DATE* | | |

**STATE OF ILLINOIS
DEPARTMENT OF TRANSPORTATION**

| | | | |
|---|-----------|-----------|--------------|
| SUMMARY OF QUANTITIES (SHEET 5 OF 5) | | | |
| SCALE: N.T.S. | SHEET NO. | OF SHEETS | STA. TO STA. |

| | | | | |
|---|------------|--------|--------------------|-----------|
| F.A.P. RTE. | SECTION | COUNTY | TOTAL SHEETS | SHEET NO. |
| 370 | 2017-060TS | COOK | 24 | 7 |
| FED. ROAD DIST. NO. [ILLINOIS] FED. AID PROJECT | | | CONTRACT NO. 62G03 | |

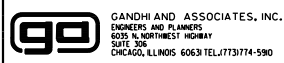
Ø0042

TRAFFIC SIGNAL LEGEND

(NOT TO SCALE)

| ITEM | EXISTING | PROPOSED | ITEM | EXISTING | PROPOSED | ITEM | EXISTING | PROPOSED |
|---|----------|----------|--|----------|----------|---|----------|----------|
| CONTROLLER CABINET | | | HANDHOLE -SQUARE -ROUND | | | SIGNAL HEAD -(P) PROGRAMMABLE SIGNAL HEAD | | |
| COMMUNICATION CABINET | | | HEAVY DUTY HANDHOLE -SQUARE -ROUND | | | SIGNAL HEAD WITH BACKPLATE -(P) PROGRAMMABLE SIGNAL HEAD -(RB) RETROREFLECTIVE BACKPLATE | | |
| MASTER CONTROLLER | | | DOUBLE HANDHOLE | | | PEDESTRIAN SIGNAL HEAD AT RAILROAD INTERSECTIONS | | |
| MASTER MASTER CONTROLLER | | | JUNCTION BOX | | | PEDESTRIAN SIGNAL HEAD WITH COUNTDOWN TIMER | | |
| UNINTERRUPTABLE POWER SUPPLY | | | RAILROAD CANTILEVER MAST ARM | | | ILLUMINATED SIGN "NO LEFT TURN"/"NO RIGHT TURN" | | |
| SERVICE INSTALLATION -(P) POLE MOUNTED | | | RAILROAD FLASHING SIGNAL | | | NUMBER OF CONDUCTORS, ELECTRIC CABLE NO. 14, UNLESS NOTED OTHERWISE. ALL DETECTOR LOOP CABLE TO BE SHIELDED | | |
| SERVICE INSTALLATION -(G) GROUND MOUNTED -(GM) GROUND MOUNTED METERED | | | RAILROAD CROSSING GATE | | | GROUND CABLE IN CONDUIT, NO. 6 SOLID COPPER (GREEN) | | |
| TELEPHONE CONNECTION | | | RAILROAD CROSSBUCK | | | ELECTRIC CABLE IN CONDUIT, TRACER NO. 14 1/C | | |
| STEEL MAST ARM ASSEMBLY AND POLE | | | RAILROAD CONTROLLER CABINET | | | COAXIAL CABLE | | |
| ALUMINUM MAST ARM ASSEMBLY AND POLE | | | UNDERGROUND CONDUIT (UC), GALVANIZED STEEL | | | VENDOR CABLE | | |
| STEEL COMBINATION MAST ARM ASSEMBLY AND POLE WITH LUMINAIRE | | | TEMPORARY SPAN WIRE, TETHER WIRE, AND CABLE | | | COPPER INTERCONNECT CABLE, NO. 18, 3 PAIR TWISTED, SHIELDED | | |
| SIGNAL POST -(BM) BARREL MOUNTED - TEMPORARY | | | SYSTEM ITEM | | | FIBER OPTIC CABLE -NO. 62.5/125, MM12F -NO. 62.5/125, MM12F SM12F -NO. 62.5/125, MM12F SM24F | | |
| WOOD POLE | | | INTERSECTION ITEM | | | GROUND ROD -(C) CONTROLLER -(M) MAST ARM -(P) POST -(S) SERVICE | | |
| GUY WIRE | | | REMOVE ITEM | | | | | |
| SIGNAL HEAD | | | RELOCATE ITEM | | | | | |
| SIGNAL HEAD WITH BACKPLATE | | | ABANDON ITEM | | | | | |
| SIGNAL HEAD OPTICALLY PROGRAMMED | | | CONTROLLER CABINET AND FOUNDATION TO BE REMOVED | | | | | |
| FLASHER INSTALLATION -(FS) SOLAR POWERED | | | MAST ARM POLE AND FOUNDATION TO BE REMOVED | | | | | |
| PEDESTRIAN SIGNAL HEAD | | | SIGNAL POST AND FOUNDATION TO BE REMOVED | | | | | |
| PEDESTRIAN PUSH BUTTON -(APS) ACCESSIBLE PEDESTRIAN PUSH BUTTON | | | DETECTOR LOOP, TYPE I | | | | | |
| RADAR DETECTION SENSOR | | | PREFORMED DETECTOR LOOP | | | | | |
| VIDEO DETECTION CAMERA | | | SAMPLING (SYSTEM) DETECTOR | | | | | |
| RADAR/VIDEO DETECTION ZONE | | | INTERSECTION AND SAMPLING (SYSTEM) DETECTOR | | | | | |
| PAN, TILT, ZOOM (PTZ) CAMERA | | | QUEUE AND SAMPLING (SYSTEM) DETECTOR | | | | | |
| EMERGENCY VEHICLE LIGHT DETECTOR | | | WIRELESS DETECTOR SENSOR | | | | | |
| CONFIRMATION BEACON | | | WIRELESS ACCESS POINT | | | | | |
| WIRELESS INTERCONNECT | | | | | | | | |
| WIRELESS INTERCONNECT RADIO REPEATER | | | | | | | | |

FILE NAME = K:\PROJECTS\Projects\2021\21-139-495-Contract 62603 - Western Ave at 139th St\DOT\CADD\Sheets\07.DOT DETAILS.dgn



| | | |
|----------------------------|-----------------|-----------|
| USER NAME = \$USER\$ | DESIGNED - IP | REVISED - |
| | DRAWN - IP | REVISED - |
| PLOT SCALE = 40.0000' / 1" | CHECKED - IP | REVISED - |
| PLOT DATE = \$DATE\$ | DATE - 6/8/2016 | REVISED - |

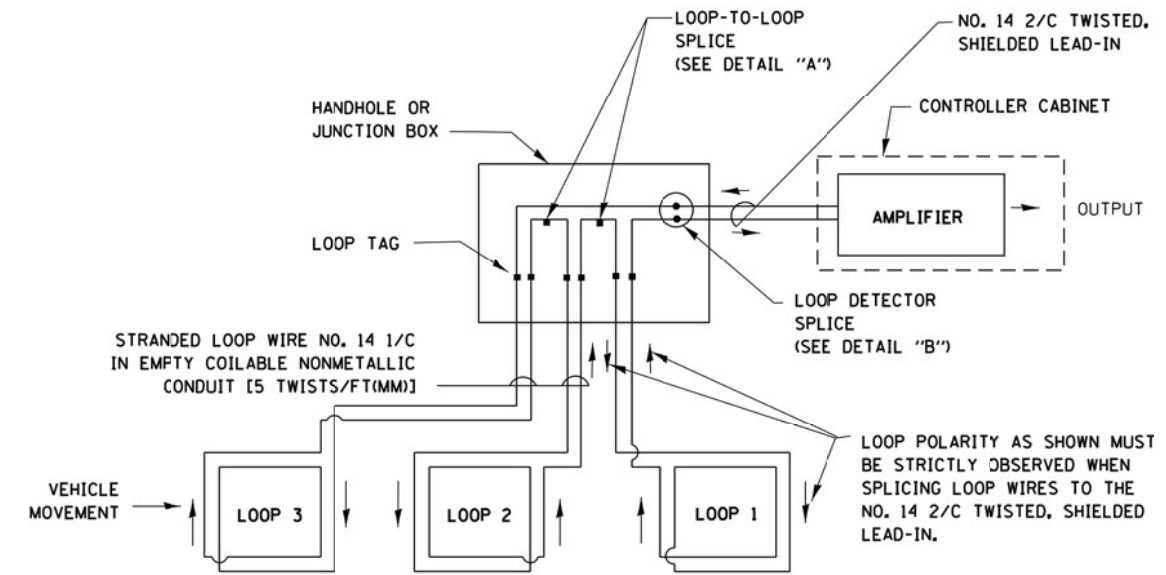
**STATE OF ILLINOIS
DEPARTMENT OF TRANSPORTATION**

| | | | |
|--|-----------|-----------|--------------|
| DISTRICT ONE STANDARD TRAFFIC SIGNAL DESIGN DETAILS | | | |
| SCALE: 1"=20' | SHEET NO. | OF SHEETS | STA. TO STA. |

| | | | | |
|---------------------------|--------------------|---------------------------|-----------------|-------------|
| F.A.P. RTE. 370 | SECTION 2017-060TS | COUNTY COOK | TOTAL SHEETS 24 | SHEET NO. 8 |
| TS-05 | | CONTRACT NO. 62603 | | |
| ILLINOIS FED. AID PROJECT | | | | |

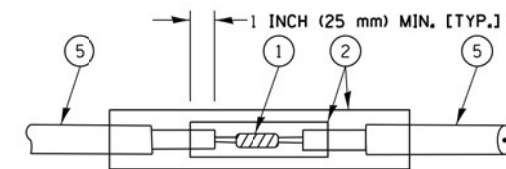
LOOP DETECTOR NOTES

1. EACH PAIR OF LOOP WIRES SHALL BE PLACED IN A SEPARATE EMPTY COILABLE NONMETALLIC CONDUIT FROM THE EDGE OF PAVEMENT TO THE HANDHOLE. SPACING BETWEEN THE HOLES DRILLED IN THE PAVEMENT SHALL NOT BE LESS THAN 6" (150 mm). EMPTY COILABLE NONMETALLIC CONDUIT SHALL BE INCLUDED IN THE COST OF THE LOOP WIRE.
2. THE NUMBER OF LOOP TURNS SHALL BE AS RECOMMENDED BY THE AMPLIFIER MANUFACTURER. ALL ADJACENT SIDES OF THE LOOPS SHALL BE INSTALLED IN SUCH A WAY THAT THE CURRENT FLOW IS IN THE SAME DIRECTION TO REINFORCE ITS MAGNETIC FIELDS FOR SMALL VEHICLE DETECTION.
3. EACH LOOP LEAD-IN SHALL BE IDENTIFIED AND PERMANENTLY TAGGED IN THE HANDHOLE. EACH LEAD-IN CABLE TAG SHALL INDICATE THE LOCATION OF THE LOOP, LOOP ROTATION (CLOCKWISE/COUNTERCLOCKWISE), LOOP LEAD-IN DIRECTION (IN OR OUT), LOOP CABLE NUMBER AND LOCATION IN CABINET, AND NUMBER OF TURNS IN THE DETECTOR LOOPS IN WATER PROOF INK AS INDICATED ON THE DISTRICT 1 STANDARD TRAFFIC SIGNAL DESIGN DETAIL. THE CONTRACTOR SHALL MARK LOOP LOCATIONS ON RECORD DRAWINGS AND PRESENT TO THE ENGINEER AFTER FINAL INSPECTION. LOOPS SHALL BE MARKED BY LANE AND LOOP NUMBER. SEE DETAIL BELOW.
4. ALL LOOP CABLE SHALL BE FASTENED WITH PLASTIC TIE WRAP TO THE HANDHOLE HOOKS.
5. IN ASPHALT PAVEMENT, LOOPS SHOULD BE PLACED IN THE BINDER AND DIVEHOLES MARKED AT THE CURB WITH A SAW-CUT. THE SAW-CUT SHALL BE CUT IN ACCORDANCE WITH LOCAL AND E.P.A. DUST CONTROL REQUIREMENTS. DETECTOR LOOP(S) SHALL NOT BE INSTALLED IN WET CONDITIONS AND THE SAW-CUTS MUST BE FREE OF DEBRIS AND RESIDUE SUCH AS DUST AND WATER WHICH IS TO BE ACHIEVED BY THE USE OF COMPRESSED AIR, WIRE BRUSHING AND HEAT DRYING ACCORDING TO SEALANT MANUFACTURER REQUIREMENTS. THE DETECTOR WIRE SHALL BE HELD IN PLACE BY THE USE OF FORM WEDGES. WEDGES SHALL BE SPACED NO MORE THAN 18" (450 mm) APART.
6. LOOP SPLICES SHALL BE SOLDERED USING A SOLDERING IRON. BLOW TORCHES OR OTHER DEVICES WHICH OXIDIZE COPPER CABLE SHALL NOT BE ALLOWED FOR SOLDERING OPERATIONS. SEE DETAIL BELOW RIGHT.
7. PREFORMED DETECTOR LOOPS SHALL BE USED, AS SHOWN ON THE PLANS, WHERE NEW CONCRETE PAVEMENT IS PROPOSED. THE INSTALLATION OF PREFORMED LOOPS SHALL BE IN ACCORDANCE WITH THE DISTRICT 1 SPECIFICATIONS OR AS DIRECTED BY THE ENGINEER.

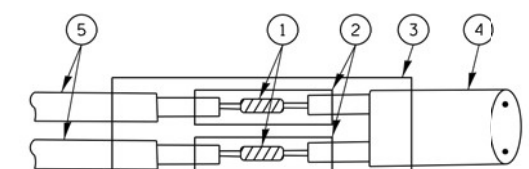


DETECTOR LOOP WIRING SCHEMATIC

- LOOPS SHALL BE SPLICED IN SERIES.
- SAW-CUTS SHALL BE A MINIMUM WIDTH OF 5/16" (8 mm).
- SAW-CUT DEPTHS SHALL BE 3" (75 mm). IF IN CONCRETE, THE SAW-CUT DEPTH SHALL BE TO THE TOP OF THE REINFORCEMENT.
- LOOP CORNERS SHALL BE DRILLED WITH A 2" (50 mm) DIAMETER CORE.



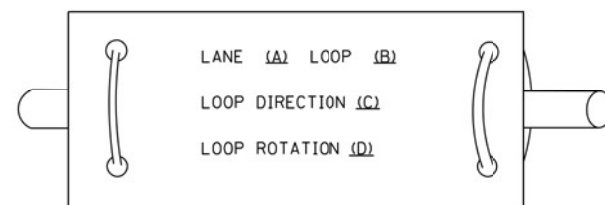
**DETAIL "A"
LOOP-TO-LOOP SPLICE**



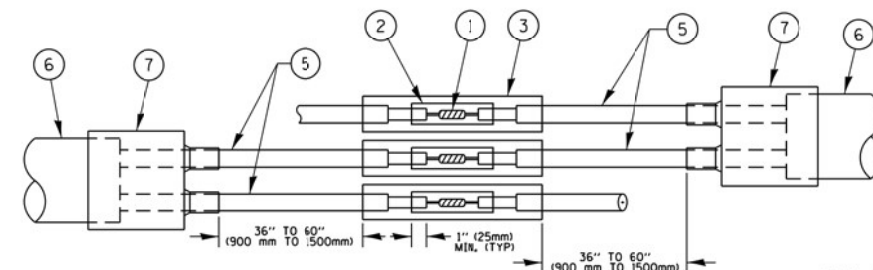
**DETAIL "B"
LOOP-TO-CONTROLLER SPLICE**

TYPE I LOOP

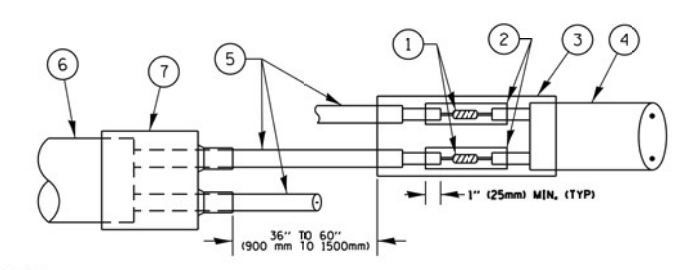
LOOP LEAD-IN CABLE TAG



- A. LANE 1 IS THE LANE CLOSEST TO THE CENTERLINE OF THE ROADWAY
- B. LOOP #1 IS THE LOOP IN THE LANE CLOSEST TO THE INTERSECTION.
- C. LABEL LOOP CABLE "IN" OR LOOP CABLE "OUT".
- D. LABEL LOOP CABLE CLOCKWISE OR LOOP CABLE COUNTERCLOCKWISE.



**DETAIL "A"
LOOP-TO-LOOP SPLICE**



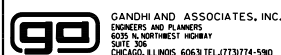
**DETAIL "B"
LOOP-TO-CONTROLLER SPLICE**

PREFORMED LOOP

LOOP DETECTOR SPLICE

- ① WESTERN UNION SPLICE SOLDERED WITH ROSIN CORE FLUX. ALL EXPOSED SURFACES OF THE SOLDER SHALL BE SMOOTH, THE WESTERN UNION SPLICES SHALL BE STAGGERED.
- ② WCSMW 30/100 HEAT SHRINK TUBE, MINIMUM LENGTH 3" (75 mm), UNDERWATER GRADE.
- ③ WCS 200/750 HEAT SHRINK TUBE, MINIMUM LENGTH 6" (150 mm), UNDERWATER GRADE.
- ④ NO. 14 2/C TWISTED, SHIELDED CABLE.
- ⑤ LOOP CONDUCTOR WITH FLEXIBLE PLASTIC TUBE.
- ⑥ PREFORMED LOOP
- ⑦ XL POLYOLEFIN 2 CONDUCTOR BREAKOUT SEALS, TYCO CBR-2 OR APPROVED EQUAL

FILE NAME = K:\PROJECTS\Projects 2021\21-139-495-Contract 62603 - Western Ave at 139th St\DOT\CADD\Sheets\08.IDOT DETAILS.2.dgn



| | | |
|-----------------------------|------------|-----------|
| USER NAME = \$USER\$ | DESIGNED - | REVISED - |
| PLOT SCALE = 40.0000' / in. | DRAWN - | REVISED - |
| PLOT DATE = \$DATE\$ | CHECKED - | REVISED - |
| | DATE - | REVISED - |

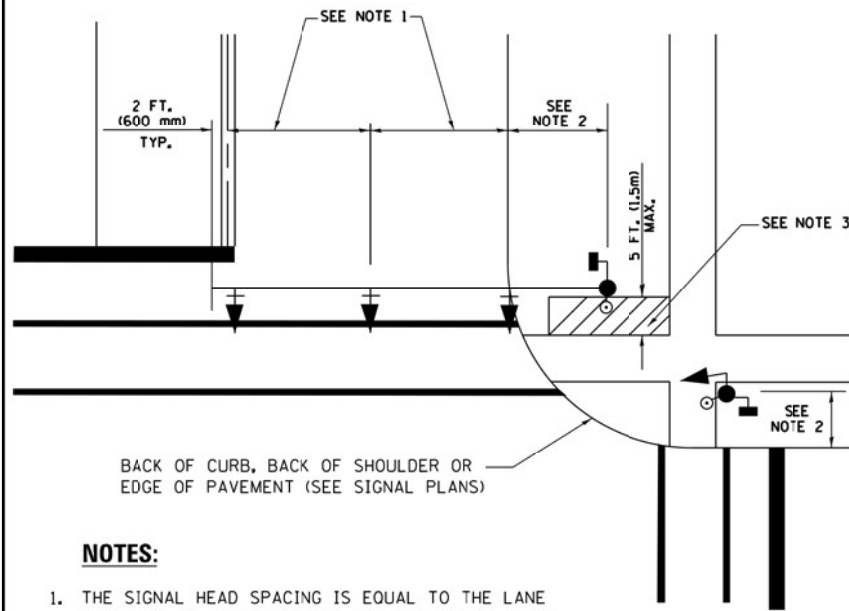
**STATE OF ILLINOIS
DEPARTMENT OF TRANSPORTATION**

**DISTRICT ONE
STANDARD TRAFFIC SIGNAL DESIGN DETAILS**

SCALE: 1"=20' SHEET NO. OF SHEETS STA. TO STA.

| | | | | |
|---------------------------|--------------------|--------------------|-----------------|-------------|
| F.A.P. RTE. 370 | SECTION 2017-060TS | COUNTY COOK | TOTAL SHEETS 24 | SHEET NO. 9 |
| TS-05 | | CONTRACT NO. 62G03 | | |
| ILLINOIS FED. AID PROJECT | | | | |

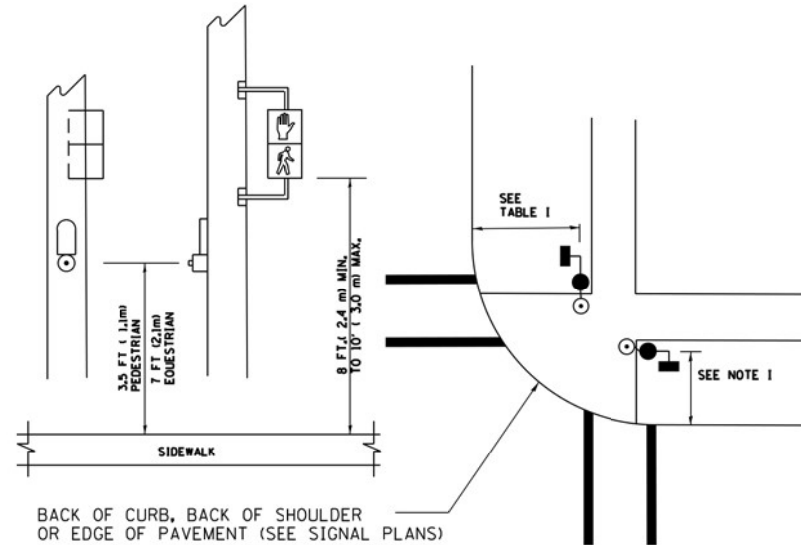
**TRAFFIC SIGNAL MAST ARM AND SIGNAL POST
MAST ARM MOUNTED SIGNALS IN EXISTING, PROPOSED OR
FUTURE SIDEWALK/BICYCLE PATH AREA. INTERSECTION SHOWN
WITH PEDESTRIAN SIGNALS AND PEDESTRIAN PUSHBUTTON DETECTORS.**



NOTES:

1. THE SIGNAL HEAD SPACING IS EQUAL TO THE LANE WIDTH OR AS SHOWN ON THE TRAFFIC SIGNAL PLAN.
2. REFER TO THE TRAFFIC SIGNAL EQUIPMENT OFFSET TABLE.
3. PROVIDE A LEVEL ALL-WEATHER SURFACE (CONCRETE SIDEWALK, ASPHALT BICYCLE PATH SURFACE OR MATCHING MATERIAL TO THE ADJACENT SURFACE) UP TO THE MAST ARM SHAFT OR THE SIGNAL POST.
4. THE FACE OF THE PEDESTRIAN PUSHBUTTON SHALL BE PARALLEL TO THE CROSSWALK TO BE USED.
5. THE LOCATIONS AND INSTALLATION OF PEDESTRIAN SIGNAL HEADS AND PEDESTRIAN PUSHBUTTONS SHALL MEET THE REQUIREMENTS OF THE MUTCD AND INFORMATION FOUND IN THE "AMERICANS WITH DISABILITIES ACT ACCESSIBILITY GUIDELINES FOR BUILDINGS AND FACILITIES."

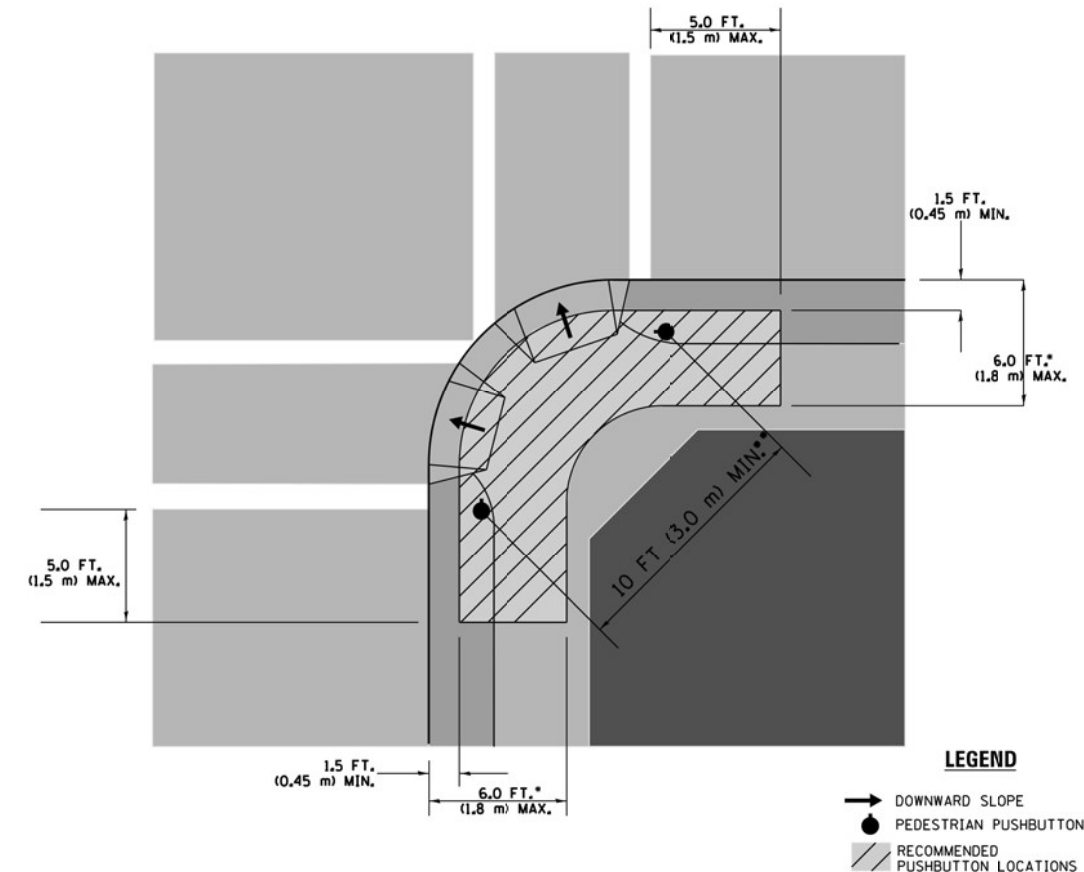
**PEDESTRIAN SIGNAL POST
AND
PEDESTRIAN PUSH BUTTON POST**



NOTES:

1. REFER TO THE TRAFFIC SIGNAL EQUIPMENT OFFSET TABLE.
2. PROVIDE A LEVEL ALL-WEATHER SURFACE (CONCRETE SIDEWALK, ASPHALT BICYCLE PATH SURFACE OR MATCHING MATERIAL TO THE ADJACENT SURFACE) UP TO THE PEDESTRIAN SIGNAL POST OR THE PEDESTRIAN PUSH BUTTON POST.
3. THE FACE OF THE PEDESTRIAN PUSHBUTTON SHALL BE PARALLEL TO THE CROSSWALK TO BE USED.
4. THE LOCATIONS AND INSTALLATION OF PEDESTRIAN SIGNAL HEADS AND PEDESTRIAN PUSHBUTTONS SHALL MEET THE REQUIREMENTS OF THE MUTCD AND INFORMATION FOUND IN THE "AMERICANS WITH DISABILITIES ACT ACCESSIBILITY GUIDELINES FOR BUILDINGS AND FACILITIES."

RECOMMENDED PUSHBUTTON LOCATIONS



LEGEND

- DOWNWARD SLOPE
- PEDESTRIAN PUSHBUTTON
- ▨ RECOMMENDED PUSHBUTTON LOCATIONS

- WHERE THERE ARE CONSTRAINTS THAT MAKE IT IMPRACTICAL TO PLACE THE PEDESTRIAN PUSHBUTTON BETWEEN 1.5 FT (0.45 m) AND 6 FT (1.8 m) FROM THE EDGE OF THE CURB, SHOULDER, OR PAVEMENT, IT SHOULD NOT BE FURTHER THAN 10 FT (3 m) FROM THE EDGE OF CURB, SHOULDER, OR PAVEMENT.
- WHERE THERE ARE CONSTRAINTS ON A PARTICULAR CORNER THAT MAKE IT IMPRACTICAL TO PROVIDE THE 10 FT (3 m) SEPARATION BETWEEN THE TWO PEDESTRIAN PUSHBUTTONS, THE PUSHBUTTONS MAY BE PLACED CLOSER TOGETHER OR ON THE SAME POLE.

NOTES:

1. PEDESTRIAN SIGNAL HEADS SHALL BE MOUNTED WITH THE BOTTOM OF THE SIGNAL HOUSING INCLUDING BRACKETS NOT LESS THAN 8 FT (2.4 m) OR MORE THAN 10 FT (3 m) ABOVE SIDEWALK LEVEL, AND SHALL BE POSITIONED AND ADJUSTED TO PROVIDE MAXIMUM VISIBILITY AT THE BEGINNING OF THE CONTROLLED CROSSWALK.
2. THE BOTTOM OF THE SIGNAL HOUSING (INCLUDING BRACKETS) OF A VEHICULAR SIGNAL FACE THAT IS NOT LOCATED OVER A HIGHWAY SHALL BE AT LEAST 8 FT (2.4 m) BUT NOT MORE THAN 19 FT (5.8 m) ABOVE THE SIDEWALK OR, IF THERE IS NO SIDEWALK, ABOVE THE PAVEMENT GRADE AT THE CENTER OF THE ROADWAY.
3. THE BOTTOM OF THE SIGNAL HOUSING AND ANY RELATED ATTACHMENTS TO A SIGNAL FACE LOCATED OVER ANY PORTION OF A HIGHWAY SHALL BE ACCORDING TO CURRENT STATE STANDARDS 877001, 877002, 877006, 877011 AND 877012 WITH A MINIMUM OF 16 FT (5.0 m) AND A MAXIMUM OF 18 FT. (5.5 m) FROM THE HIGHEST POINT OF PAVEMENT.
4. THE BOTTOM OF THE TEMPORARY SPAN WIRE MOUNTED SIGNAL HOUSING AND ANY RELATED ATTACHMENTS TO A SIGNAL FACE LOCATED OVER ANY PORTION OF A HIGHWAY SHALL BE ACCORDING TO CURRENT STATE STANDARD 880001 WITH A MINIMUM OF 17 FT (5.18 m) FROM THE HIGHEST POINT OF PAVEMENT.
5. THE TOP OF THE SIGNAL HOUSING OF A SIGNAL FACE LOCATED OVER ANY PORTION OF A HIGHWAY SHALL NOT BE MORE THAN 25.6 FT (7.8 m) ABOVE THE PAVEMENT.

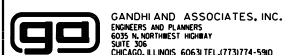
TRAFFIC SIGNAL EQUIPMENT OFFSET

| TRAFFIC SIGNAL EQUIPMENT | COMBINATION CONCRETE CURB AND GUTTER (MINIMUM DISTANCE FROM BACK OF CURB TO CENTERLINE OF FOUNDATION) | SHOULDER/NON-CURBED AREA (MINIMUM DISTANCE FROM EDGE OF PAVEMENT TO CENTERLINE OF FOUNDATION) |
|------------------------------------|---|---|
| TRAFFIC SIGNAL MAST ARM POLE | 6 FT (1.8m) | SHOULDER WIDTH + 2 FT (0.6m), MINIMUM 10 FT (3.0m) |
| TRAFFIC SIGNAL POST | 4 FT (1.2m) | SHOULDER WIDTH + 2 FT (0.6m), MINIMUM 10 FT (3.0m) |
| PEDESTRIAN SIGNAL POST | 4 FT (1.2m) | SHOULDER WIDTH + 2 FT (0.6m), MINIMUM 10 FT (3.0m) |
| PEDESTRIAN PUSHBUTTON POST | 4 FT (1.2m) | SHOULDER WIDTH + 2 FT (0.6m), MINIMUM 10 FT (3.0m) |
| TEMPORARY WOOD POLE | 6 FT (1.8m) | SHOULDER WIDTH + 2 FT (0.6m), MINIMUM 10 FT (3.0m) |
| CONTROLLER CABINET | 6 FT (1.8m) MINIMUM DISTANCE SEE NOTE 2 | SHOULDER WIDTH + 6 FT (1.8m), MINIMUM 16 FT (4.9m) SEE NOTE 3. |
| SERVICE INSTALLATION, GROUND MOUNT | 6 FT (1.8m) MINIMUM DISTANCE SEE NOTE 2 | SHOULDER WIDTH + 6 FT (1.8m), MINIMUM 16 FT (4.9m) SEE NOTE 3. |

NOTES:

1. CONTACT THE "AREA TRAFFIC SIGNAL MAINTENANCE AND OPERATIONS ENGINEER" FOR ASSISTANCE IN LOCATING THE TRAFFIC SIGNAL EQUIPMENT WHEN THERE ARE CONFLICTS WITH DITCHES OR THE MINIMUM OFFSET DISTANCES CANNOT BE MET.
2. MINIMUM DISTANCE FROM THE BACK OF CURB TO THE ROADWAY SIDE OF THE FOUNDATION.
3. MINIMUM DISTANCE FROM THE EDGE OF PAVEMENT TO THE ROADWAY SIDE OF THE FOUNDATION.
4. ANY CHANGES TO THE OFFSETS OF THE FOUNDATIONS, FROM THE MINIMUM DISTANCES LISTED IN THE "TRAFFIC SIGNAL EQUIPMENT OFFSET" CHART AND THE TRAFFIC SIGNAL INSTALLATION PLAN, COULD EFFECT THE PLACEMENT OF THE SIGNAL HEADS, PEDESTRIAN SIGNAL HEADS AND THE PEDESTRIAN PUSHBUTTONS. THE SIGNAL HEAD PLACEMENT ON THE MAST ARMS SHALL REMAIN AS PER THE TRAFFIC SIGNAL INSTALLATION PLAN AND THE "TRAFFIC SIGNAL MAST ARM AND SIGNAL POST" DETAIL ABOVE. THE PROPOSED MAST ARM LENGTHS MAY NEED TO BE REVISED TO MEET THE ABOVE REQUIREMENTS. THE PEDESTRIAN SIGNAL HEADS AND PEDESTRIAN PUSHBUTTONS MUST MEET THE REQUIREMENTS UNDER THE DETAILS ON THIS SHEET.

FILE NAME = K:\PROJECTS\Projects_2021\21-139-485-Contract 62603 - Western Ave at 139th St\DOT\CADD\Sheets\09\DOT DETAILS_3.dgn



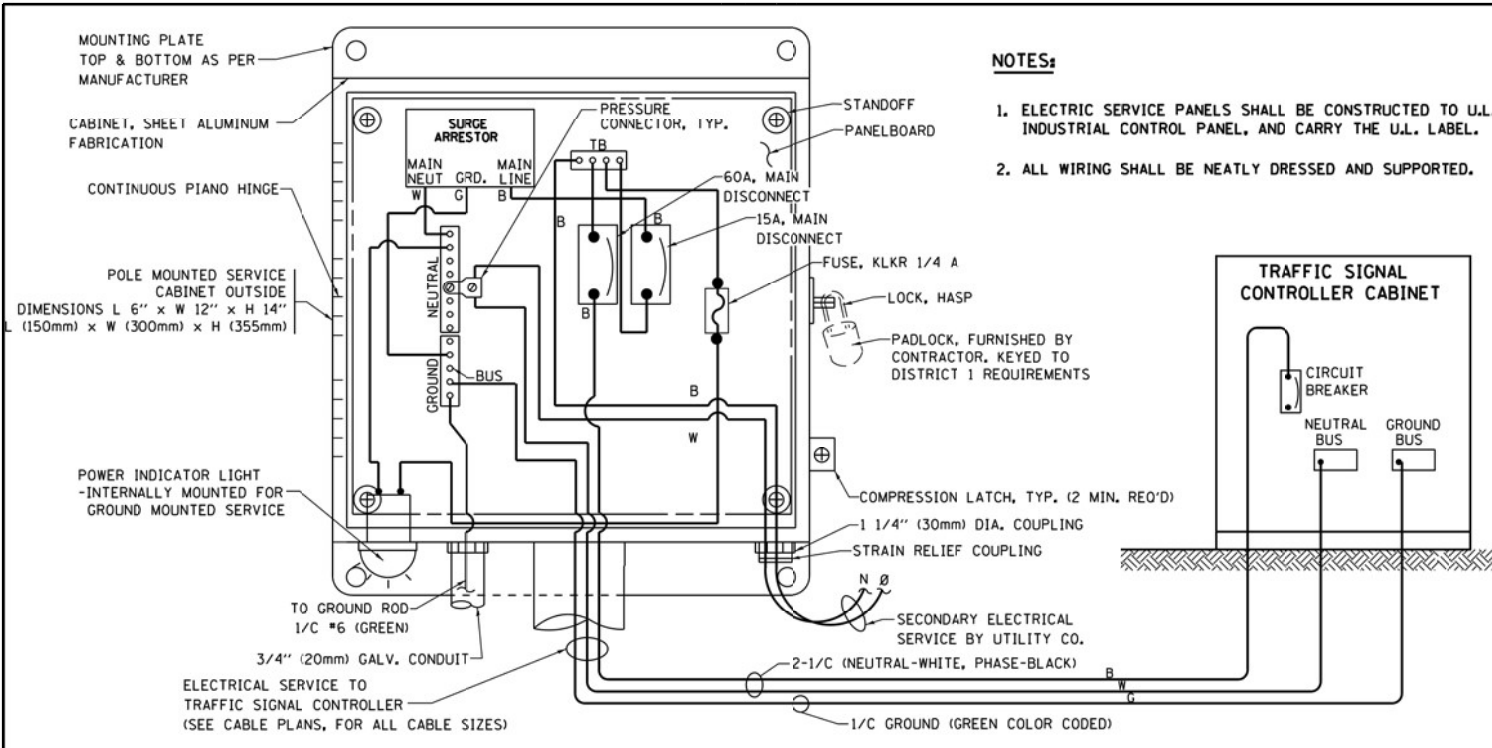
| | | |
|----------------------------|------------|-----------|
| USER NAME = \$USER\$ | DESIGNED - | REVISED - |
| PLOT SCALE = 40.0000' / 1" | DRAWN - | REVISED - |
| PLOT DATE = \$DATE\$ | CHECKED - | REVISED - |
| | DATE - | REVISED - |

**STATE OF ILLINOIS
DEPARTMENT OF TRANSPORTATION**

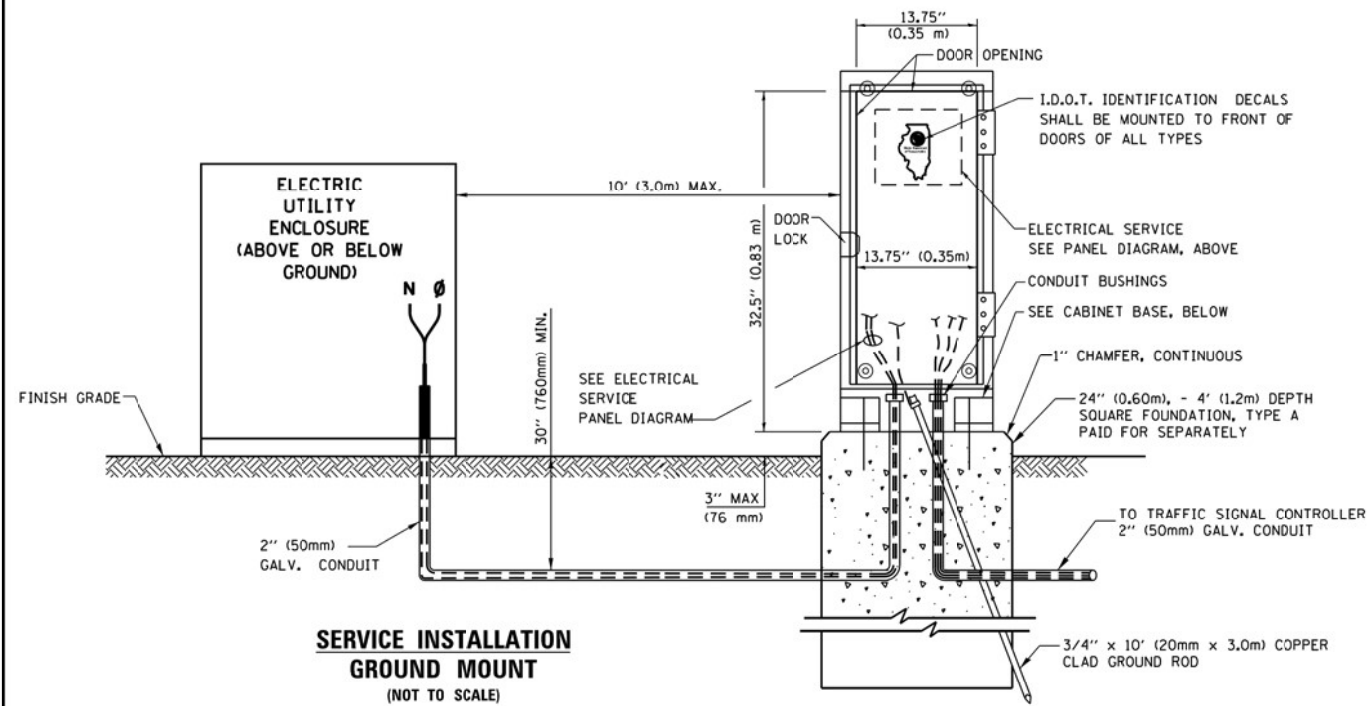
**DISTRICT ONE
STANDARD TRAFFIC SIGNAL DESIGN DETAILS**

SCALE: 1"=20' SHEET NO. OF SHEETS STA. TO STA.

| | | | | |
|---------------------------|------------|--------------------|--------------|-----------|
| F.A.P. RTE. | SECTION | COUNTY | TOTAL SHEETS | SHEET NO. |
| 370 | 2017-060TS | COOK | 24 | 10 |
| TS-05 | | CONTRACT NO. 62603 | | |
| ILLINOIS FED. AID PROJECT | | | | |

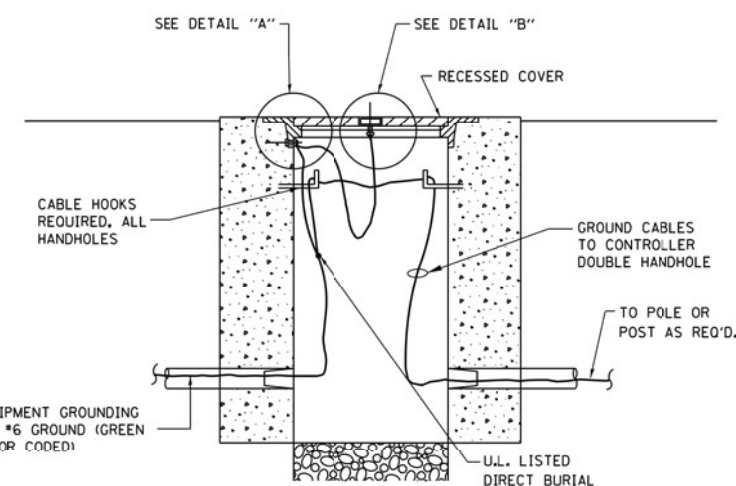
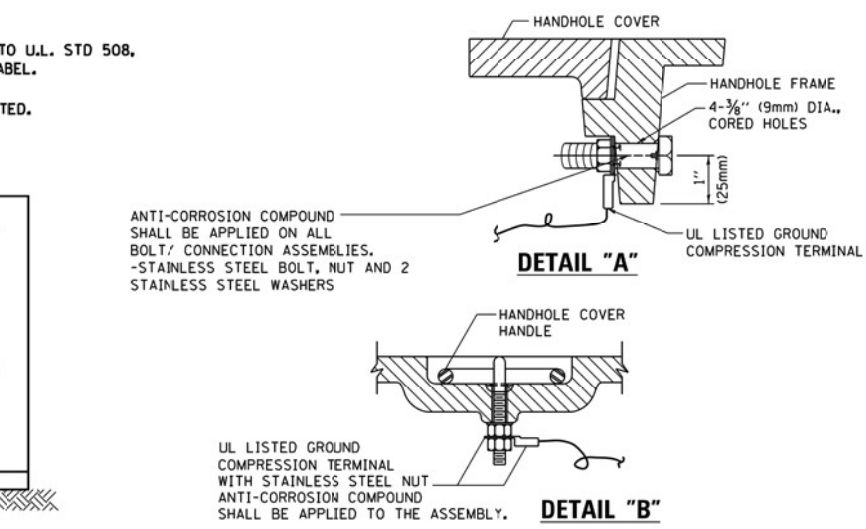
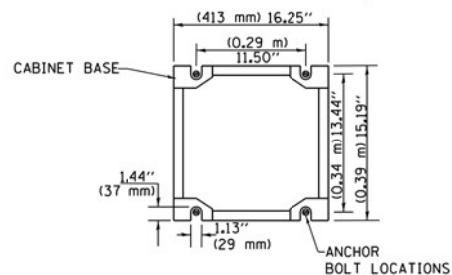


**ELECTRICAL SERVICE - PANEL DIAGRAM (TYPICAL FOR POLE AND GROUND MOUNTED SERVICE)
SERVICE INSTALLATION POLE MOUNT (SHOWN)
(NOT TO SCALE)**

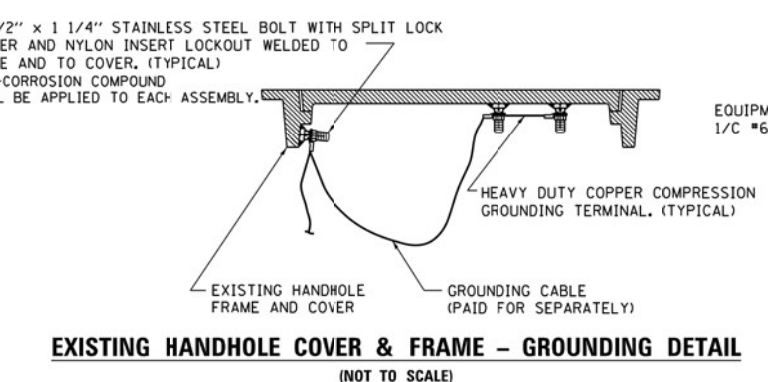


SERVICE INSTALLATION GROUND MOUNT (NOT TO SCALE)

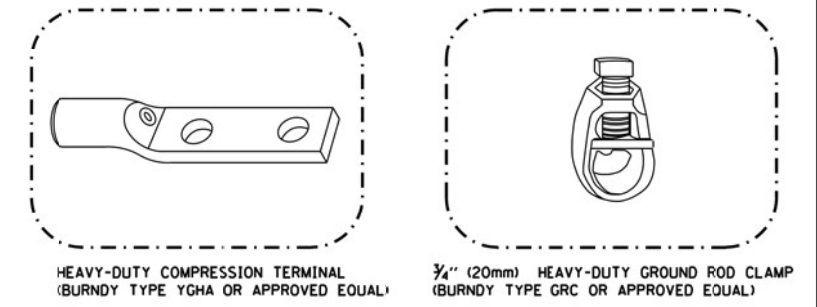
CABINET - BASE BOLT PATTERN (NOT TO SCALE)



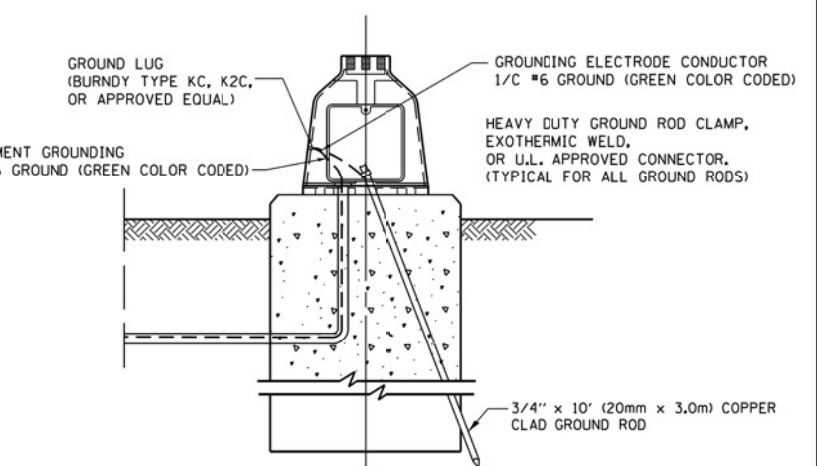
HANDHOLE COVER & FRAME - GROUNDING DETAIL (NOT TO SCALE)



EXISTING HANDHOLE COVER & FRAME - GROUNDING DETAIL (NOT TO SCALE)



- NOTES:**
- ALL CLAMPS SHALL BE BRONZE OR COPPER, U.L. APPROVED.
 - GROUND CABLE SHALL BE LOOPED OVER HOOKS IN THE HANDHOLES
 - 6.5' (2.0m) SLACK SHALL BE PROVIDED IN SINGLE HANDHOLES
 - 13' (4.0m) OF SLACK SHALL BE PROVIDED IN DOUBLE HANDHOLES.
 - 5' (1.4m) OF SLACK SHALL BE PROVIDED BETWEEN FRAME AND COVER.



MAST ARM POLE / POST-GROUNDING DETAIL (NOT TO SCALE)

**NOTES:
GROUNDING SYSTEM**

1. THE GROUNDING SYSTEM SHALL CONSIST OF AN INSULATED CONDUCTOR TYPE XLP, NO. 6 A.W.G., STRANDED COPPER TO BE INSTALLED IN RACEWAYS. THE GROUNDING CABLE SHALL BE INSTALLED IN A CONTINUOUS MANNER AS SHOWN ON THE CABLE PLAN PROVIDED. ALL GROUNDING CONDUCTORS SHALL BE BONDED TO METAL ENCLOSURE (HANDHOLE, POST, MAST ARM, CONTROLLER, ETC.). GROUND ROD SHALL BE 3/4" DIA. x 10'-0" (20mm x 3.0m) LONG, COPPER CLAD. ONE GROUND ROD SHALL BE INSTALLED AT ALL POST FOUNDATIONS, POLE FOUNDATIONS, CONTROLLER CABINET FOUNDATION AND ELECTRICAL SERVICE INSTALLATION AS INDICATED ON THE CABLE PLAN. IF THERE ARE ANY SPECIAL CONDITIONS SUCH AS SUB-SURFACE CONDITIONS OR INSTALLATION PROBLEMS, THE RESIDENT ENGINEER SHALL BE NOTIFIED OR CONTACT THE BUREAU OF TRAFFIC, ILLINOIS DEPARTMENT OF TRANSPORTATION DISTRICT ONE AT (847) 705-4139.
2. THE NEUTRAL CONDUCTOR AND THE GROUND CONDUCTOR SHALL BE CONNECTED IN THE SERVICE INSTALLATION. AT NO OTHER POINT IN THE TRAFFIC SIGNAL SYSTEM SHALL THE NEUTRAL AND GROUND CONDUCTORS BE CONNECTED.
3. ALL EQUIPMENT GROUNDING CONDUCTORS SHALL TERMINATE AT THE GROUND BUS IN THE CONTROLLER CABINET.
4. THE CONTRACTOR SHALL PROVIDE A GROUND CABLE WITH CONNECTORS BETWEEN THE HANDHOLE COVER AND HANDHOLE FRAME.

FILE NAME = K:\PROJECTS\Projects 2021\21-139-485-Contract 62603 - Western Ave at 139th St\IDOT\CADD\Sheets\18.IDOT.DETAILS-4.dgn

GO GANDHI AND ASSOCIATES, INC.
ENGINEERS AND PLANNERS
5035 N. NORTHWEST HIGHWAY
SUITE 200
CHICAGO, ILLINOIS 60630 TEL: (773) 774-5900

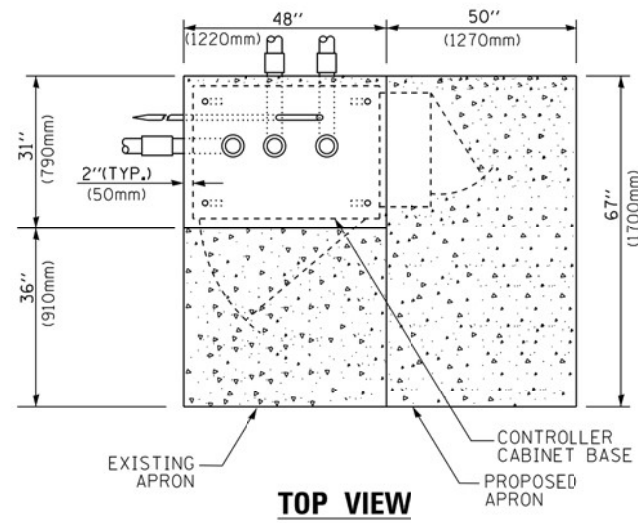
| | | |
|----------------------------|------------|-----------|
| USER NAME = \$USER\$ | DESIGNED - | REVISED - |
| PLOT SCALE = 40.0000' / 1" | DRAWN - | REVISED - |
| PLOT DATE = \$DATE\$ | CHECKED - | REVISED - |
| | DATE - | REVISED - |

**STATE OF ILLINOIS
DEPARTMENT OF TRANSPORTATION**

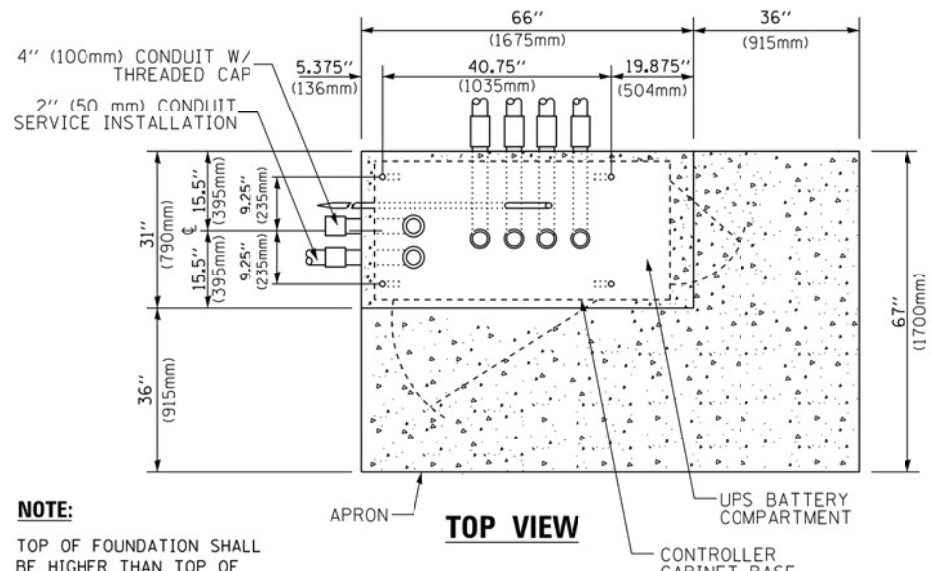
**DISTRICT ONE
STANDARD TRAFFIC SIGNAL DESIGN DETAILS**

SCALE: 1"=20' SHEET NO. OF SHEETS STA. TO STA.

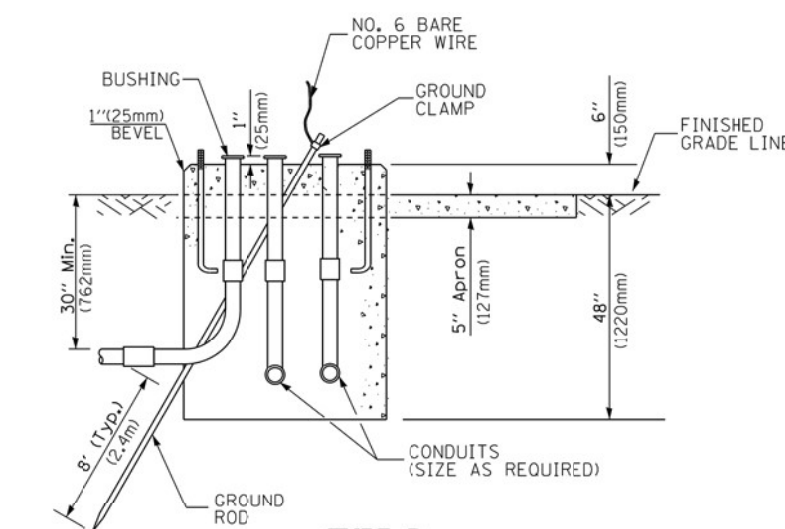
| | | | | |
|---------------------------|------------|---------------------------|--------------|-----------|
| F.A.P. RTE. | SECTION | COUNTY | TOTAL SHEETS | SHEET NO. |
| 370 | 2017-060TS | COOK | 24 | 11 |
| TS-05 | | CONTRACT NO. 62G03 | | |
| ILLINOIS FED. AID PROJECT | | | | |



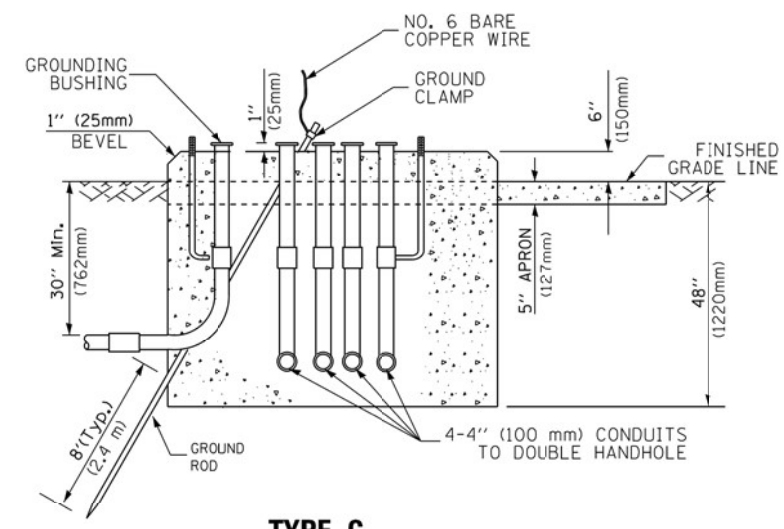
TOP VIEW



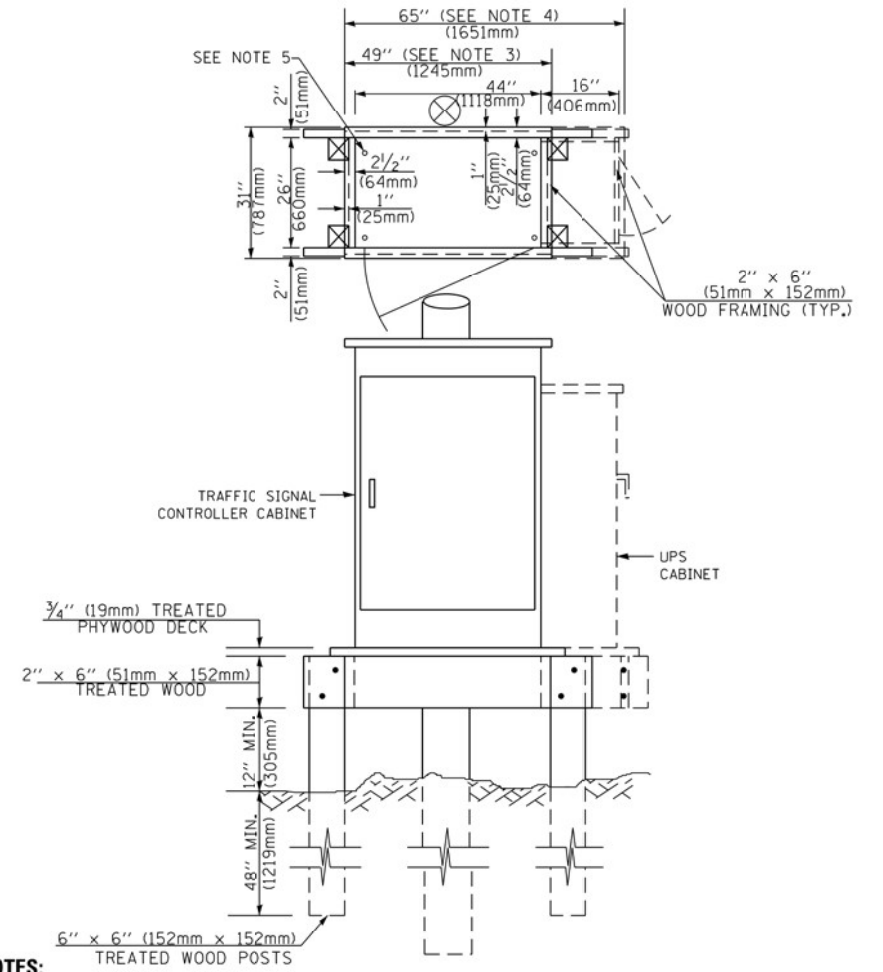
TOP VIEW



**TYPE D
FOR GROUND MOUNTED
CONTROLLER CABINET
AND UPS BATTERY CABINET**



**TYPE C
FOR GROUND MOUNTED
SUPER P (TYPE IV) AND SUPER R (TYPE V)
CONTROLLER CABINETS**



NOTES:

1. BASED ON CONTROLLER CABINET TYPE IV WITH BASE DIMENSIONS OF 26" x 44" (660mm x 1118mm). ADJUST PLATFORM SIZE TO FIT CABINET BASE DIMENSIONS BEING SUPPLIED.
2. BASED ON UNINTERRUPTIBLE POWER SUPPLY CABINET WITH BASE DIMENSIONS OF 16" x 25" (406mm x 635mm). ADJUST PLATFORM SIZE TO FIT CABINET BASE DIMENSIONS BEING SUPPLIED.
3. PLATFORM SIZE FOR CONTROLLER CABINET TYPE IV.
4. PLATFORM SIZE FOR CONTROLLER CABINET TYPE IV AND UNINTERRUPTIBLE POWER SUPPLY CABINET.
5. DRILLED HOLES THROUGH THE PLATFORM BASE TO MATCH THE CONTROLLER CABINET BOLT TEMPLATE. FASTEN THE CONTROLLER CABINET TO THE PLATFORM WITH CARRIAGE BOLTS, WASHERS AND NUTS.
6. FASTEN ALL SUPPORT WOOD FRAMING TO THE WOOD POSTS WITH 2 LAG SCREWS FOR EACH CONNECTION.

**TEMPORARY SIGNAL CONTROLLER
WOOD SUPPORT PLATFORM**

| CABLE SLACK LENGTH | FEET | METER |
|---|------|-------|
| HANDHOLE | 6.5 | 2.0 |
| DOUBLE HANDHOLE | 13.0 | 4.0 |
| SIGNAL POST | 2.0 | 0.6 |
| MAST ARM | 2.0 | 0.6 |
| CONTROLLER CABINET | 1.5 | 0.5 |
| FIBER OPTIC AT CABINET | 13.0 | 4.0 |
| ELECTRIC SERVICE AT (CABINET OR SERVICE LOCATION) | 1.5 | 0.5 |
| GROUND CABLE (SIGNAL POST, MAST ARM, CABINET) | 1.5 | 0.5 |
| GROUND CABLE (BETWEEN FRAME AND COVER) | 5.0 | 1.6 |

CABLE SLACK

| VERTICAL CABLE LENGTH | FEET | METER |
|---|--------|-------|
| MAST ARM POLE (MAST ARM MOUNTED SIGNAL HEAD) (L = MAST ARM LENGTH - DISTANCE TO SIGNAL HEAD FROM END OF ARM) | 20.0+L | 6.0+L |
| BRACKET MOUNTED (MAST ARM POLE OR SIGNAL POLE) | 13.0 | 4.0 |
| PEDESTRIAN PUSH BUTTON | 6.0 | 2.0 |
| SERVICE INSTALLATION POLE MOUNT TO SERVICE DROP | 13.5 | 4.1 |
| SERVICE INSTALLATION POLE MOUNT TO GROUND | 13.5 | 4.1 |
| SERVICE INSTALLATION GROUND MOUNT | 6.0 | 2.0 |
| FOUNDATION (SIGNAL POST, MAST ARM POLE, CONTROLLER CABINET, SERVICE-GROUND MOUNT) | 3.0 | 1.0 |

VERTICAL CABLE LENGTH

| FOUNDATION | DEPTH |
|---|--------------|
| TYPE A - Signal Post | 4'-0" (1.2m) |
| TYPE C - CONTROLLER W/ UPS | 4'-0" (1.2m) |
| TYPE D - CONTROLLER | 4'-0" (1.2m) |
| SERVICE INSTALLATION, GROUND MOUNT, TYPE A - SQUARE | 4'-0" (1.2m) |

DEPTH OF FOUNDATION

| MAST ARM LENGTH | ① FOUNDATION DEPTH | FOUNDATION DIAMETER | SPIRAL DIAMETER | QUANTITY OF REBARS | SIZE OF REBARS |
|--|--------------------|---------------------|-----------------|--------------------|----------------|
| Less than 30' (9.1 m) | 10'-0" (3.0 m) | 30" (750mm) | 24" (600mm) | 8 | 6(19) |
| Greater than or equal to 30' (9.1 m) and less than 40' (12.2 m) | 13'-6" (4.1 m) | 30" (750mm) | 24" (600mm) | 8 | 6(19) |
| | 11'-0" (3.4 m) | 36" (900mm) | 24" (600mm) | 12 | 7(22) |
| Greater than or equal to 40' (12.2 m) and less than 50' (15.2 m) | 13'-0" (4.0 m) | 36" (900mm) | 30" (750mm) | 12 | 7(22) |
| | 15'-0" (4.6 m) | 36" (900mm) | 30" (750mm) | 12 | 7(22) |
| Greater than or equal to 56' (16.8 m) and less than 65' (19.8 m) | 21'-0" (6.4 m) | 42" (1060mm) | 36" (900mm) | 16 | 8(25) |
| | 25'-0" (7.6 m) | 42" (1060mm) | 36" (900mm) | 16 | 8(25) |

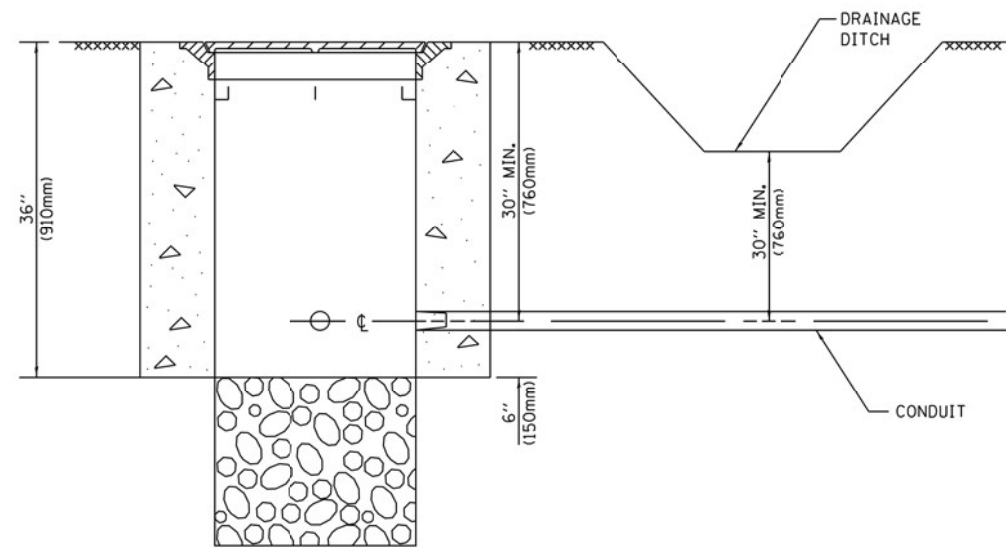
NOTES:

1. These foundation depths are for sites which have cohesive soils (clayey silt, sandy clay, etc.) along the length of the shaft, with an average Unconfined Compressive Strength (Qu) > 1.0 tsf (100 kpa). This strength shall be verified by boring data prior to construction or with testing by the Engineer during foundation drilling. The Bureau of Bridges & Structures should be contacted for a revised design if other conditions are encountered.
2. Combination mast arm assemblies under 55 feet (16.8 m) shall use 36" (900 mm) diameter foundations.
3. Combination mast arm assemblies under 56 feet (16.8 m) through 75 feet (22.9 m) shall use 42" (1060 mm) diameter foundations.
4. For mast arm assemblies with dual arms refer to state standard 878001..

DEPTH OF MAST ARM FOUNDATIONS, TYPE E

FILE NAME = K:\PROJECTS\Projects\2021\21-139-485-Contract 62603 - Western Ave at 139th St\DOT\CADD\Sheets\11.DOT DETAILS.B.dgn

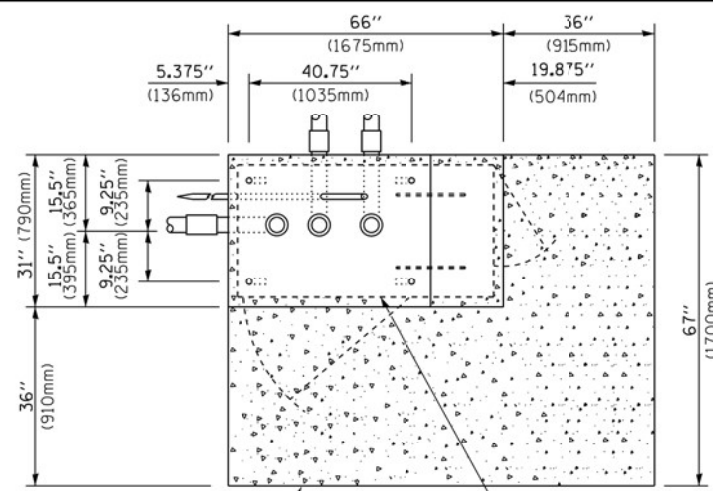
| | | | | | | | | | | |
|----------------------|----------------------------|------------|-----------|---|--|---------------------------|------------|---------------------------|--------------|-----------|
| | USER NAME = \$USER\$ | DESIGNED - | REVISED - | STATE OF ILLINOIS DEPARTMENT OF TRANSPORTATION | DISTRICT ONE STANDARD TRAFFIC SIGNAL DESIGN DETAILS | F.A.P. RTE. | SECTION | COUNTY | TOTAL SHEETS | SHEET NO. |
| | PLOT SCALE = 40.0000' / 1" | CHECKED - | REVISED - | | | 370 | 2017-060TS | COOK | 24 | 12 |
| PLOT DATE = \$DATE\$ | DATE - | REVISED - | | SCALE: 1"=20' | SHEET NO. OF SHEETS STA. TO STA. | TS-05 | | CONTRACT NO. 62603 | | |
| | | | | | | ILLINOIS FED. AID PROJECT | | | | |



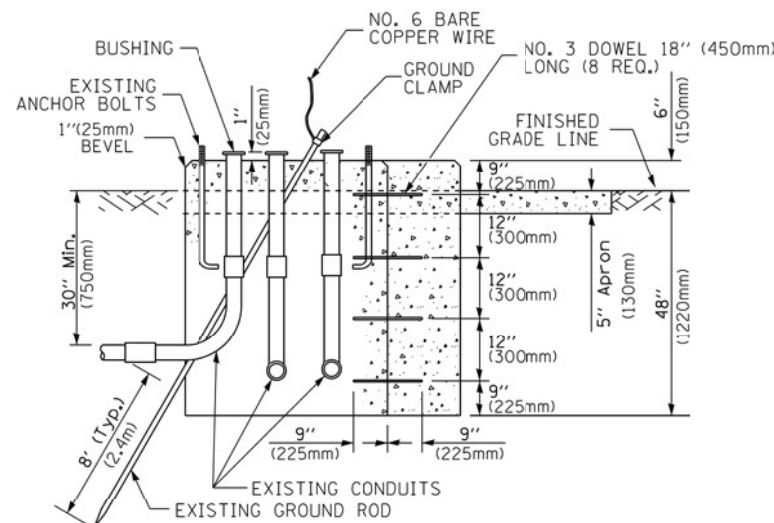
NOTES:

1. CONDUIT DEPTH SHALL BE A MINIMUM OF 30" (760mm) BELOW THE BOTTOM OF THE DRAINAGE DITCH OR ANY SLOPING GROUND
2. THE MINIMUM CONDUIT DEPTH APPLIES TO ALL CONDUIT PLACED UNDER ROADWAY PAVEMENT, MULTI-USE PATHS, SIDEWALKS AND SOIL SURFACES.
3. THE MINIMUM CONDUIT DEPTH APPLIES TO ALL HANDHOLES, HEAVY DUTY HANDHOLES AND DOUBLE HANDHOLES.

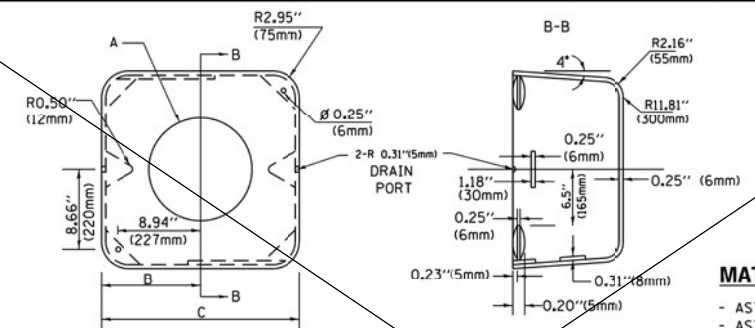
HANDHOLE WITH MINIMUM CONDUIT DEPTH
(NOT TO SCALE)



TOP VIEW
(NOT TO SCALE)



MODIFY EXISTING TYPE "D" FOUNDATION TO TYPE "C" FOUNDATION
(NOT TO SCALE)



MATERIAL:
- ASTM A36 STEEL
- ASTM A-123 HOT DIPPED GALVANIZED

| | A | B | C | HEIGHT | WEIGHT |
|--------|----------------|---------------|--------------------------|-----------------|--------|
| VARIES | 9.5" (241mm) | 19" (483mm) | 7" (178mm) - 12" (300mm) | 53 lbs (24kg) | |
| VARIES | 10.75" (273mm) | 21.5" (546mm) | 7" (178mm) - 12" (300mm) | 68 lbs (31 kg) | |
| VARIES | 13.0" (330mm) | 26" (660mm) | 7" (178mm) - 12" (300mm) | 81 lbs (37 kg) | |
| VARIES | 18.5" (470mm) | 37" (940mm) | 7" (178mm) - 12" (300mm) | 126 lbs (57 kg) | |

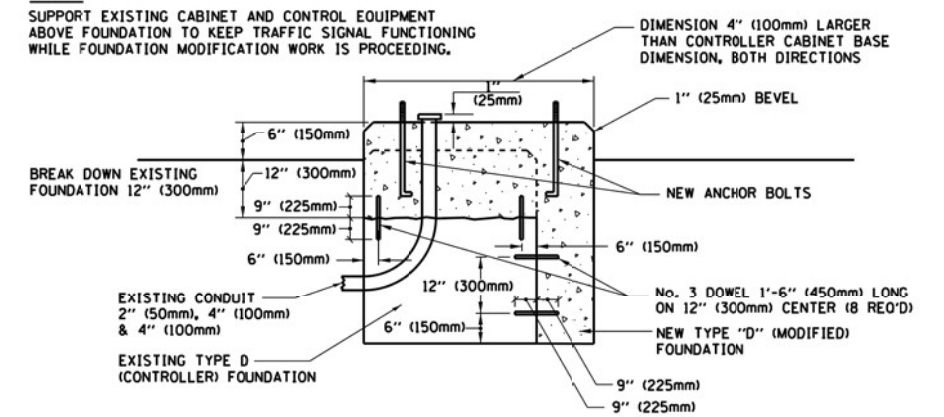
SHROUD

NOTES:

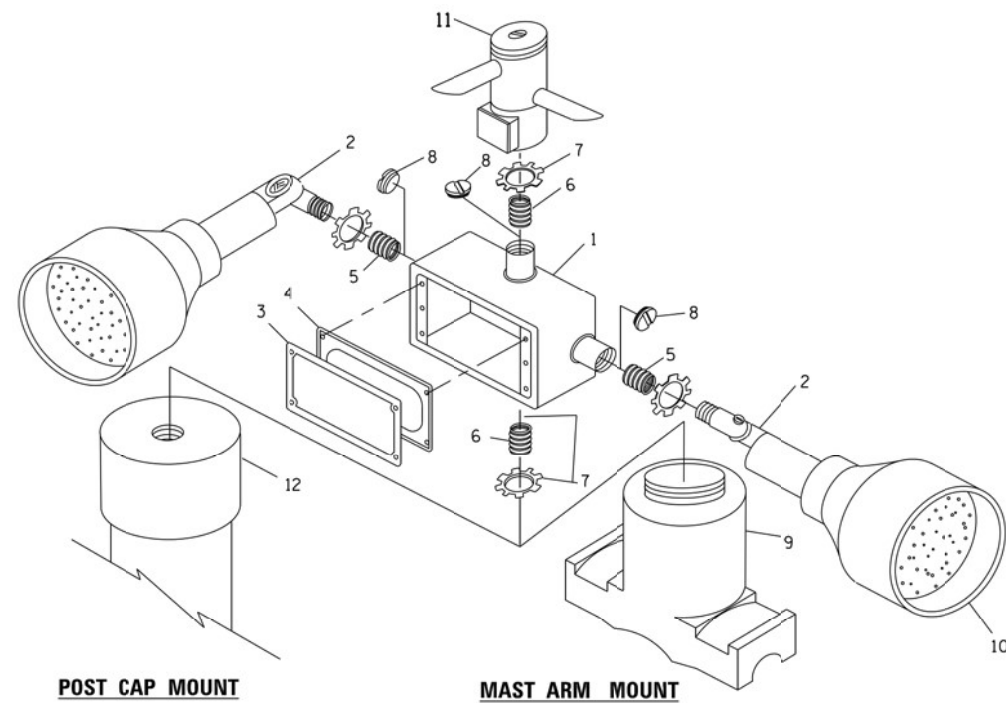
1. DIMENSION "A" IS EQUAL TO THE DIAMETER OF THE MAST ARM POLE AT THE TOP OF THE SHROUD. THE SHROUD SHALL BE TIGHT TO THE MAST ARM POLE.
2. THE SUPPLIER SHALL VERIFY THE ABOVE DIMENSIONS BASED ON MAST ARM REQUIREMENTS.
3. THE HEIGHT OF THE SHROUD SHALL COVER THE ANCHOR BOLTS, NUTS AND MAST ARM POLE BASE.

NOTE:

SUPPORT EXISTING CABINET AND CONTROL EQUIPMENT ABOVE FOUNDATION TO KEEP TRAFFIC SIGNAL FUNCTIONING WHILE FOUNDATION MODIFICATION WORK IS PROCEEDING.



MODIFY EXISTING TYPE "D" FOUNDATION

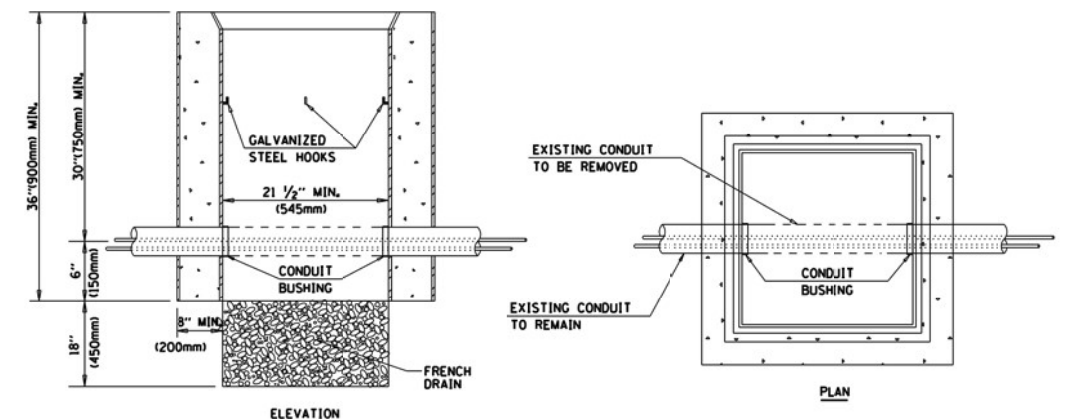


EMERGENCY VEHICLE DETECTOR WITH CONFIRMATION BEACON MOUNTING DETAIL

| ITEM NO. | IDENTIFICATION |
|----------|--|
| 1 | OUTLET BOX- GALV. 21 CU. IN. (0,000344 CU-M) |
| 2 | LAMP HOLDER AND COVER |
| 3 | OUTLET BOX COVER |
| 4 | RUBBER COVER GASKET |
| 5 | REDUCING BUSHING |
| 6 | 3/4" (19 mm) CLOSE NIPPLE |
| 7 | 3/4" (19 mm) LOCKNUT |
| 8 | 3/4" (19 mm) HOLE PLUG |
| 9 | SADDLE BRACKET - GALV. |
| 10 | 6 WATT PAR 38 LED FLOOD LAMP |
| 11 | DETECTOR UNIT |
| 12 | POST CAP [18 FT. (5.4 m) POST MIN.] |

NOTES:

1. ALL ELECTRICAL ITEMS, EXCEPT ITEMS #2 AND #11 SHALL BE ALUMINUM OR GALVANIZED
2. ITEM #1- OZ/GEDNEY FSX-1-50 OR EQUIVALENT
ITEM #2- MULBERRY CON-O-SHADE LAMP SHIELD OR EQUIVALENT
ITEM #9- "BAND-IT" SADDLE BRACKET OR EQUIVALENT
3. WHEN POST MOUNTING IS SPECIFIED, ITEM #9 SHALL NOT BE REQUIRED. THE DETECTION UNIT SHALL BE MOUNTED DIRECTLY ON TOP OF THE CAP BY DRILLING AND TAPPING A 3/4" (19 mm) HOLE WITH PIPE THREADS. THE POST CAP SHALL EITHER BE SCREWED TO THE TOP OF THE POST OR A MINIMUM OF 3 TIGHTENING SCREWS SHALL BE REQUIRED ON EACH CAP.

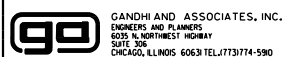


NOTES:

1. HANDHOLE CONSTRUCTED PER STATE STANDARD 814001.
2. REMOVAL OF THE EXISTING CONDUIT FROM THE HANDHOLE AND THE INSTALLATION OF THE CONDUIT BUSHINGS SHALL BE INCLUDED WITH THE COST OF THE HANDHOLE.

HANDHOLE TO INTERCEPT EXISTING CONDUIT

FILE NAME = K:\PROJECTS\Projects_2021\21-139-485-Contract 62603 - Western Ave at 139th St.IDDT.CADD.Sheets\12.IDDT DETAILS.6.dgn



| | | |
|----------------------------|------------|-----------|
| USER NAME = \$USER\$ | DESIGNED - | REVISED - |
| PLOT SCALE = 40.0000' / 1" | DRAWN - | REVISED - |
| PLOT DATE = \$DATE\$ | CHECKED - | REVISED - |
| | DATE - | REVISED - |

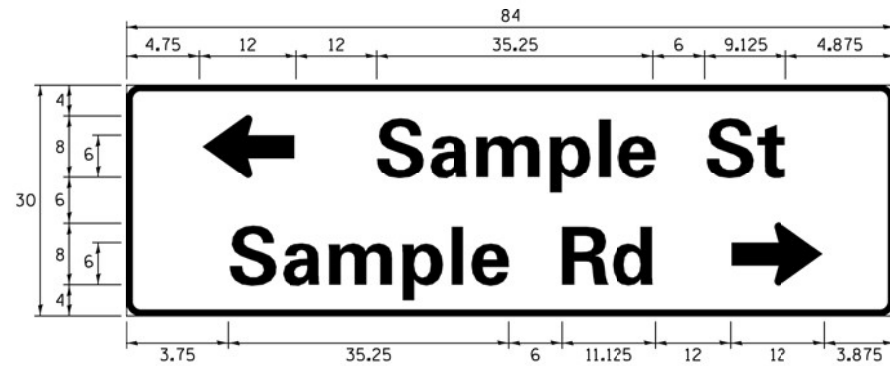
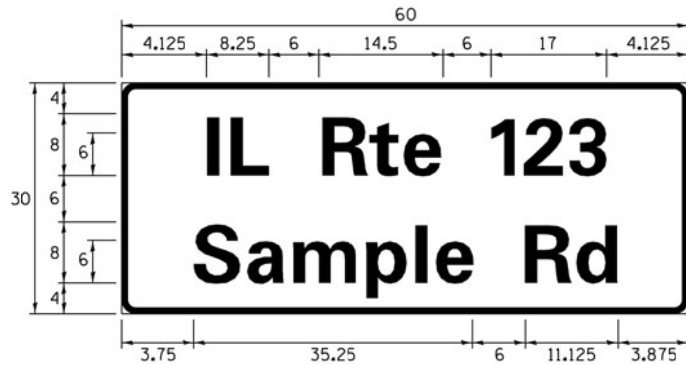
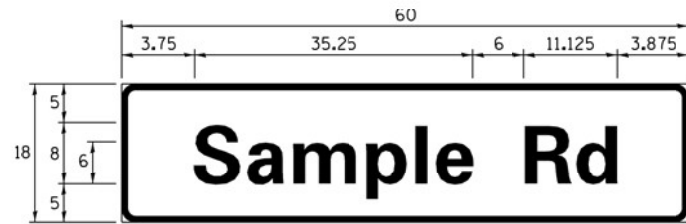
STATE OF ILLINOIS
DEPARTMENT OF TRANSPORTATION

DISTRICT ONE
STANDARD TRAFFIC SIGNAL DESIGN DETAILS

SCALE: 1"=20' SHEET NO. OF SHEETS STA. TO STA.

| | | | | |
|---------------------------|------------|--------------------|--------------|-----------|
| F.A.P. RTE. | SECTION | COUNTY | TOTAL SHEETS | SHEET NO. |
| 370 | 2017-060TS | COOK | 24 | 13 |
| TS-05 | | CONTRACT NO. 62G03 | | |
| ILLINOIS FED. AID PROJECT | | | | |

SIGN PANEL – TYPE 1 OR TYPE 2



| DESIGN SERIES | AREA (SQ FT) | SIGN PANEL TYPE | SHEETING TYPE | QTY. REQUIRED |
|---------------|--------------|-----------------|---------------|---------------|
| D OR C | - | 1 OR 2 | ZZ | - |

ALL DIMENSIONS ARE IN INCHES EXCEPT NOTED OTHERWISE

COMMON STREET NAME ABBREVIATIONS AND WIDTHS

| NAME | ABBREVIATION | WIDTH (INCH) | |
|---------------|--------------|--------------|------------|
| | | SERIES "C" | SERIES "D" |
| AVENUE | Ave | 15.000 | 18.250 |
| BOULEVARD | Blvd | 17.125 | 20.000 |
| CIRCLE | Cir | 11.125 | 13.000 |
| COURT | Ct | 8.250 | 9.625 |
| DRIVE | Dr | 8.625 | 10.125 |
| HIGHWAY | Hwy | 18.375 | 22.000 |
| ILLINOIS | IL | 7.000 | 8.250 |
| LANE | Ln | 9.125 | 10.750 |
| PARKWAY | Pkwy | 23.375 | 27.375 |
| PLACE | Pl | 7.125 | 7.750 |
| ROAD | Rd | 9.625 | 11.125 |
| ROUTE | Rte | 12.625 | 14.500 |
| STREET | St | 8.000 | 9.125 |
| TERRACE | Ter | 12.625 | 14.625 |
| TRAIL | Tr | 7.750 | 9.125 |
| UNITED STATES | US | 10.375 | 12.250 |

GENERAL NOTES

- WHERE MAST ARM MOUNTED STREET NAME SIGNS ARE SPECIFIED, THE MAST ARM ASSEMBLY AND POLES SHALL BE DESIGNED TO SUPPORT THE LOADINGS CALLED FOR ON STANDARDS 877001, 877002, 877006, 877011 AND 877012, AS APPLICABLE, PLUS TWO (2) SIGN PANELS 2'-6" x 8'-0" MOUNTED AS SHOWN. THE DESIGN SHALL BE IN ACCORDANCE WITH THE REQUIREMENTS OF THE CURRENT "STANDARD SPECIFICATIONS FOR STRUCTURAL SUPPORTS FOR HIGHWAY SIGNS, LUMINAIRES, AND TRAFFIC SIGNALS" AS PUBLISHED BY THE AMERICAN ASSOCIATION OF STATE HIGHWAY AND TRANSPORTATION OFFICIALS FOR 80 M.P.H. WIND VELOCITY.
- ALL SIGNS SHALL CONSIST OF A WHITE LEGEND AND BORDER (TYPE ZZ SHEETING) ON A GREEN BACKGROUND (TYPE ZZ SHEETING)
- THE SIGN LENGTH SHALL BE IN 6-INCH INCREMENTS, BUT THE OVERALL LENGTH SHALL NOT EXCEED 8'-0". ALL BORDERS SHALL BE 3/4" WIDE. CORNER RADIUS SHALL BE 1-7/8". THE SPACING BETWEEN THE WORDS SHOULD BE 6", IF POSSIBLE, BUT MAY BE REDUCED TO 5" WHEN SPACING IS CRITICAL. A MINIMUM OF 2-1/2" SHALL BE INCLUDED BETWEEN THE WORD AND THE RIGHT AND LEFT EDGES OF THE SIGN.
- A PREFERRED METHOD FOR THE SIGN DESIGN IS TO USE SERIES "D" LETTER ON A ONE-LINE SIGN 18" IN HEIGHT AND A MAXIMUM OF 8'-0" IN WIDTH. IF SERIES "D" DOES NOT FIT ON A 8'-0" SIGN, THEN SERIES "C" SHOULD BE TRIED. IF SERIES "C" DOES NOT FIT ON A 8'-0" SIGN, A 30" HIGH TWO-LINE SIGN CAN BE USED. THE CROSSROAD DESIGNATION AS TO STREET, AVENUE, ETC. SHOULD BE SPELLED OUT ON THE SECOND LINE, IF THE ABBREVIATION CANNOT FIT ON THE FIRST LINE.
- LED ILLUMINATED STREET NAME SIGNS CAN BE USED IN PLACE OF REGULAR SIGN PANELS BUT ANY SPECIAL WORDING AND SYMBOLOGY MUST BE APPROVED BY THE DEPARTMENT. GENERAL DESIGN REQUIREMENT AS LISTED ABOVE (COLOR, FONT, SIZE, ETC.) MUST BE FOLLOWED.
- SIGNFIX ALUMINUM CHANNEL FRAMING SYSTEM SHALL BE USED FOR ALL SIGNS ATTACHED TO SIGNAL POLES AND POSTS.

LOCAL SUPPLIERS:

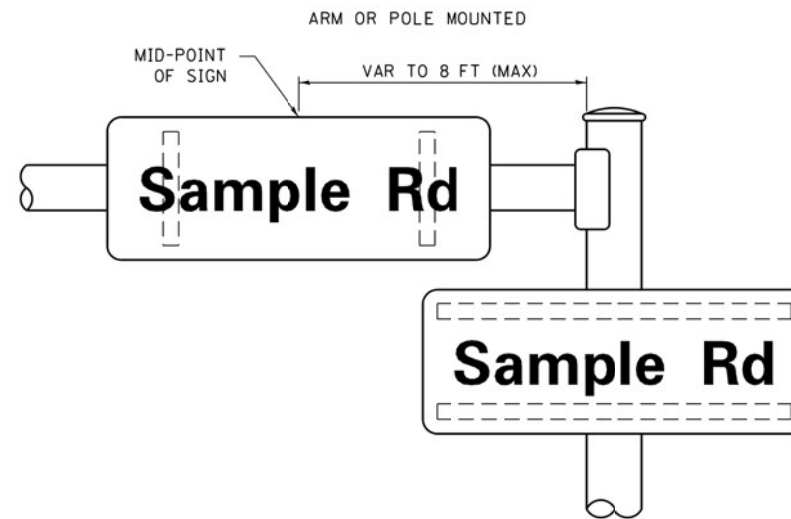
- J.O. HERBERT COMPANY, INC
MIDLOTHIAN, VA
- WESTERN REMAC, INC.
WOODRIDGE, IL

PARTS LISTING:

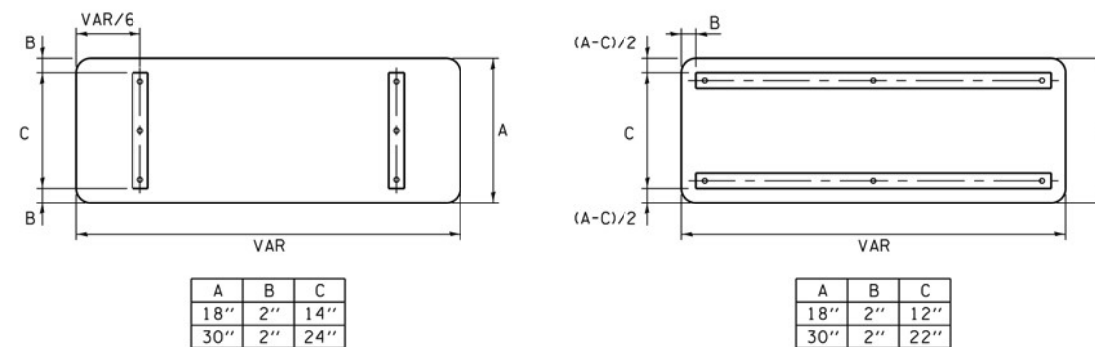
- SIGN CHANNEL PART #HPN053 (MED. CHANNEL)
1/4" x 14 x 1" H.W.H. #3
SELF TAPPING WITH NEOPRENE WASHER
- SIGN SCREWS PART #HPN034 (UNIVERSAL)
CHANNEL CLAMPS WITH STAINLESS STEEL STRAPPING
- BRACKETS

OTHER BRANDS OF MOUNTING HARDWARE ARE ACCEPTABLE, BASED UPON THE DEPARTMENT'S APPROVAL AND COMPATIBILITY WITH THE CHANNEL/BRACKET OF THE ABOVE PRODUCT.

MOUNTING LOCATION



SUPPORTING CHANNELS

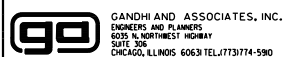


STANDARD ALPHABETS SPACING CHART

(8") UPPER CASE AND (6") LOWER CASE

| FHWA SERIES "C" | | | | FHWA SERIES "D" | | | |
|-----------------|---------------------|--------------|----------------------|-----------------|---------------------|--------------|----------------------|
| CHARACTER | LEFT SPACING (INCH) | WIDTH (INCH) | RIGHT SPACING (INCH) | CHARACTER | LEFT SPACING (INCH) | WIDTH (INCH) | RIGHT SPACING (INCH) |
| A | 0.240 | 5.122 | 0.240 | A | 0.240 | 6.804 | 0.240 |
| B | 0.880 | 4.482 | 0.480 | B | 0.960 | 5.446 | 0.400 |
| C | 0.720 | 4.482 | 0.720 | C | 0.800 | 5.446 | 0.800 |
| D | 0.880 | 4.482 | 0.720 | D | 0.960 | 5.446 | 0.800 |
| E | 0.880 | 4.082 | 0.480 | E | 0.960 | 4.962 | 0.400 |
| F | 0.880 | 4.082 | 0.240 | F | 0.960 | 4.962 | 0.240 |
| G | 0.720 | 4.482 | 0.720 | G | 0.800 | 5.446 | 0.800 |
| H | 0.880 | 4.482 | 0.880 | H | 0.960 | 5.446 | 0.960 |
| I | 0.880 | 1.120 | 0.880 | I | 0.960 | 1.280 | 0.960 |
| J | 0.240 | 4.082 | 0.880 | J | 0.240 | 5.122 | 0.960 |
| K | 0.880 | 4.482 | 0.480 | K | 0.960 | 5.604 | 0.400 |
| L | 0.880 | 4.082 | 0.240 | L | 0.960 | 4.962 | 0.240 |
| M | 0.880 | 5.284 | 0.880 | M | 0.960 | 6.244 | 0.960 |
| N | 0.880 | 4.482 | 0.880 | N | 0.960 | 5.446 | 0.960 |
| O | 0.720 | 4.722 | 0.720 | O | 0.800 | 5.684 | 0.800 |
| P | 0.880 | 4.482 | 0.720 | P | 0.960 | 5.446 | 0.240 |
| Q | 0.720 | 4.722 | 0.720 | Q | 0.800 | 5.684 | 0.800 |
| R | 0.880 | 4.482 | 0.480 | R | 0.960 | 5.446 | 0.400 |
| S | 0.480 | 4.482 | 0.480 | S | 0.400 | 5.446 | 0.400 |
| T | 0.240 | 4.082 | 0.240 | T | 0.240 | 4.962 | 0.240 |
| U | 0.880 | 4.482 | 0.880 | U | 0.960 | 5.446 | 0.960 |
| V | 0.240 | 4.962 | 0.240 | V | 0.240 | 6.084 | 0.240 |
| W | 0.240 | 6.084 | 0.240 | W | 0.240 | 7.124 | 0.240 |
| X | 0.240 | 4.722 | 0.240 | X | 0.400 | 5.446 | 0.400 |
| Y | 0.240 | 5.122 | 0.240 | Y | 0.240 | 6.884 | 0.240 |
| Z | 0.480 | 4.482 | 0.480 | Z | 0.400 | 5.446 | 0.400 |
| a | 0.320 | 3.842 | 0.640 | a | 0.400 | 4.562 | 0.720 |
| b | 0.720 | 4.082 | 0.480 | b | 0.800 | 4.802 | 0.480 |
| c | 0.480 | 4.002 | 0.240 | c | 0.480 | 4.722 | 0.240 |
| d | 0.480 | 4.082 | 0.720 | d | 0.480 | 4.802 | 0.800 |
| e | 0.480 | 4.082 | 0.320 | e | 0.480 | 4.722 | 0.320 |
| f | 0.320 | 2.480 | 0.160 | f | 0.320 | 2.882 | 0.160 |
| g | 0.480 | 4.082 | 0.720 | g | 0.480 | 4.802 | 0.800 |
| h | 0.720 | 4.082 | 0.640 | h | 0.800 | 4.722 | 0.720 |
| i | 0.720 | 1.120 | 0.720 | i | 0.800 | 1.280 | 0.800 |
| j | 0.000 | 2.320 | 0.720 | j | 0.000 | 2.642 | 0.800 |
| k | 0.720 | 4.322 | 0.160 | k | 0.800 | 5.122 | 0.160 |
| l | 0.720 | 1.120 | 0.720 | l | 0.800 | 1.280 | 0.800 |
| m | 0.720 | 6.724 | 0.640 | m | 0.800 | 7.926 | 0.720 |
| n | 0.720 | 4.082 | 0.640 | n | 0.800 | 4.722 | 0.720 |
| o | 0.480 | 4.082 | 0.480 | o | 0.480 | 4.882 | 0.480 |
| p | 0.720 | 4.082 | 0.480 | p | 0.800 | 4.802 | 0.480 |
| q | 0.480 | 4.082 | 0.720 | q | 0.480 | 4.802 | 0.800 |
| r | 0.720 | 2.642 | 0.160 | r | 0.800 | 3.042 | 0.160 |
| s | 0.320 | 3.362 | 0.240 | s | 0.320 | 3.762 | 0.240 |
| t | 0.080 | 2.882 | 0.080 | t | 0.080 | 3.202 | 0.080 |
| u | 0.640 | 4.082 | 0.720 | u | 0.720 | 4.722 | 0.800 |
| v | 0.160 | 4.722 | 0.160 | v | 0.160 | 5.684 | 0.160 |
| w | 0.160 | 7.524 | 0.160 | w | 0.160 | 9.046 | 0.160 |
| x | 0.000 | 5.202 | 0.000 | x | 0.000 | 6.244 | 0.000 |
| y | 0.160 | 4.962 | 0.160 | y | 0.160 | 6.004 | 0.160 |
| z | 0.240 | 3.362 | 0.240 | z | 0.240 | 4.002 | 0.240 |
| 1 | 0.720 | 1.680 | 0.880 | 1 | 0.800 | 2.000 | 0.960 |
| 2 | 0.480 | 4.482 | 0.480 | 2 | 0.800 | 5.446 | 0.800 |
| 3 | 0.480 | 4.482 | 0.480 | 3 | 1.440 | 5.446 | 0.800 |
| 4 | 0.240 | 4.962 | 0.720 | 4 | 0.160 | 6.004 | 0.960 |
| 5 | 0.480 | 4.482 | 0.480 | 5 | 0.800 | 5.446 | 0.800 |
| 6 | 0.720 | 4.482 | 0.720 | 6 | 0.800 | 5.446 | 0.800 |
| 7 | 0.240 | 4.482 | 0.720 | 7 | 0.560 | 5.446 | 0.560 |
| 8 | 0.480 | 4.482 | 0.480 | 8 | 0.800 | 5.446 | 0.800 |
| 9 | 0.480 | 4.482 | 0.480 | 9 | 0.800 | 5.446 | 0.800 |
| 0 | 0.720 | 4.722 | 0.720 | 0 | 0.800 | 5.684 | 0.800 |
| - | 0.240 | 2.802 | 0.240 | - | 0.240 | 2.802 | 0.240 |

FILE NAME = K:\PROJECTS\Projects\2021\21-139-485-Contract 62603 - Western Ave at 139th St\DOT\CADD\Sheets\14_IDOT_DETAILS.dgn



| | | |
|-----------------------------|-------------------|-------------------------|
| USER NAME = \$USER\$ | DESIGNED - LP/IP | REVISED - LP 07/01/2015 |
| PLOT SCALE = 40.0000 ' / 1" | DRAWN - LP | REVISED - |
| PLOT DATE = \$DATE\$ | CHECKED - IP | REVISED - |
| | DATE - 10/01/2014 | REVISED - |

**STATE OF ILLINOIS
DEPARTMENT OF TRANSPORTATION**

**DISTRICT ONE
STANDARD TRAFFIC SIGNAL DESIGN DETAILS**

SCALE: 1"=20' SHEET NO. OF SHEETS STA. TO STA.

| | | | | |
|---------------------------|--------------------|--------------------|-----------------|--------------|
| F.A.P. RTE. 370 | SECTION 2017-060TS | COUNTY COOK | TOTAL SHEETS 24 | SHEET NO. 15 |
| TS-02 | | CONTRACT NO. 62603 | | |
| ILLINOIS FED. AID PROJECT | | | | |

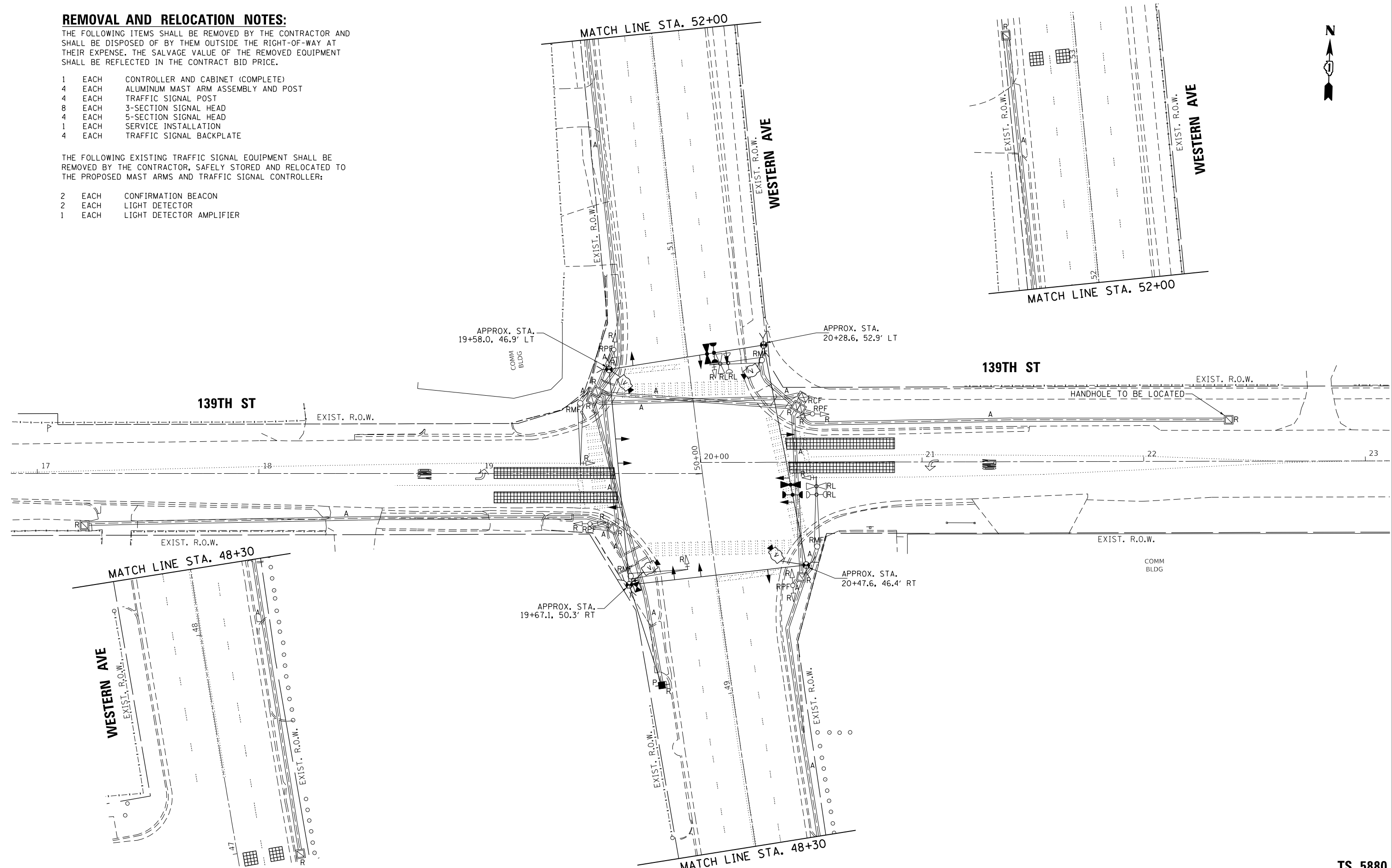
REMOVAL AND RELOCATION NOTES:

THE FOLLOWING ITEMS SHALL BE REMOVED BY THE CONTRACTOR AND SHALL BE DISPOSED OF BY THEM OUTSIDE THE RIGHT-OF-WAY AT THEIR EXPENSE. THE SALVAGE VALUE OF THE REMOVED EQUIPMENT SHALL BE REFLECTED IN THE CONTRACT BID PRICE.

- 1 EACH CONTROLLER AND CABINET (COMPLETE)
- 4 EACH ALUMINUM MAST ARM ASSEMBLY AND POST
- 4 EACH TRAFFIC SIGNAL POST
- 8 EACH 3-SECTION SIGNAL HEAD
- 4 EACH 5-SECTION SIGNAL HEAD
- 1 EACH SERVICE INSTALLATION
- 4 EACH TRAFFIC SIGNAL BACKPLATE

THE FOLLOWING EXISTING TRAFFIC SIGNAL EQUIPMENT SHALL BE REMOVED BY THE CONTRACTOR, SAFELY STORED AND RELOCATED TO THE PROPOSED MAST ARMS AND TRAFFIC SIGNAL CONTROLLER:

- 2 EACH CONFIRMATION BEACON
- 2 EACH LIGHT DETECTOR
- 1 EACH LIGHT DETECTOR AMPLIFIER

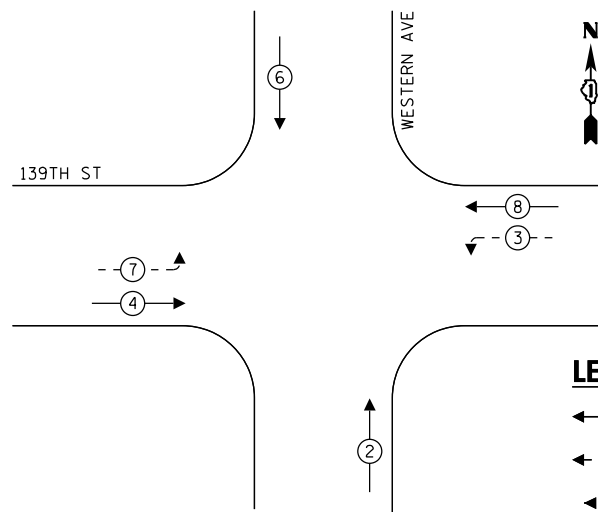


K:\PROJECTS\Projects 2021\21-139-485-Contract 62603 - Western Ave at 139th St\DOT\CADD\Sheets\15.Western Ave @ 139th Street.TEMP.INT.dgn

| | | | | | | | | | | | | |
|---|-----------------------------|-------------------|-----------|---|---|--|--|-----------------|---------------------|--------------|--------------------|--------------|
|  GANDHI AND ASSOCIATES, INC. ENGINEERS AND PLANNERS 5035 N. NORTHWEST HIGHWAY SUITE 205 CHICAGO, ILLINOIS 60630 TEL: 773-774-5900 | USER NAME = \$USER\$ | DESIGNED - AV, EA | REVISED - | STATE OF ILLINOIS DEPARTMENT OF TRANSPORTATION | TEMPORARY TRAFFIC SIGNAL INSTALLATION PLAN AND REMOVE EXISTING TRAFFIC SIGNAL EQUIPMENT PLAN WESTERN AVE AT 139TH ST | | | F.A.P. RTE. 370 | SECTION 2017-060TS | COUNTY COOK | TOTAL SHEETS 24 | SHEET NO. 16 |
| | PLOT SCALE = 40.0000' / in. | CHECKED - MS | REVISED - | | | | | SCALE: 1"=20' | SHEET NO. OF SHEETS | STA. TO STA. | CONTRACT NO. 62603 | |
| PLOT DATE = \$DATE\$ | DATE - 2/4/2022 | REVISED - | | | | | | | | | | |

TS 5880

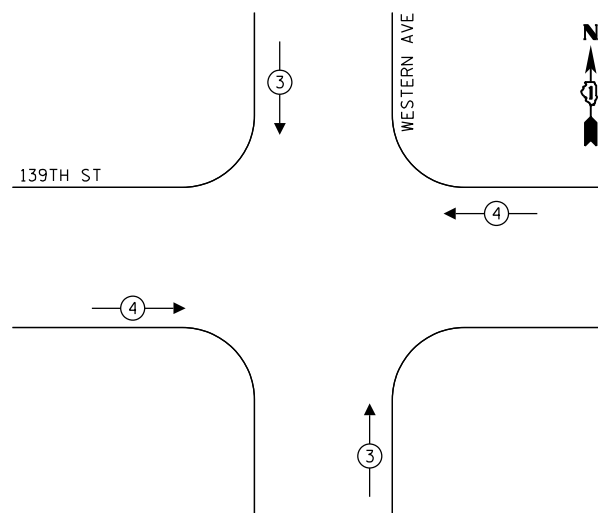
TEMPORARY CONTROLLER SEQUENCE



LEGEND:

- ← * → PROTECTED PHASE
- ← - * - → PROTECTED/PERMITTED PHASE
- ← * → PEDESTRIAN PHASE
- ← * OL → OVERLAP

TEMPORARY EMERGENCY VEHICLE PREEMPTION SEQUENCE



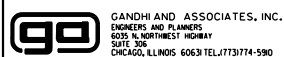
TRAFFIC SIGNAL ELECTRICAL SERVICE REQUIREMENTS

| TYPE | NO. OF LAMPS | LED WATTAGE | % OPERATION | TOTAL WATTAGE |
|------------------|--------------|-------------|-------------|---------------|
| SIGNAL (RED) | 12 | 11 | 50 | 66.0 |
| (YELLOW) | 12 | 20 | 5 | 12.0 |
| (GREEN) | 12 | 12 | 45 | 64.8 |
| PERMISSIVE ARROW | 8 | 10 | 10 | 8.0 |
| PED. SIGNAL | - | 20 | 100 | - |
| CONTROLLER | 1 | 100 | 100 | 100.0 |
| UPS | 1 | 25 | 100 | 25.0 |
| VIDEO SYSTEM | 1 | 150 | 100 | 150.0 |
| BLANK-OUT SIGN | - | 25 | 5 | - |
| FLASHER | - | - | 50 | - |
| STREET NAME SIGN | - | 120 | 50 | - |
| LUMINAIRE | - | 240 | 50 | - |
| TOTAL = | | | | 425.8 |

ENERGY COSTS TO:

ILLINOIS DEPARTMENT OF TRANSPORTATION
201 WEST CENTER COURT
SCHAUMBURG, IL 60196

ENERGY SUPPLY: CONTACT: ILYAS MOHIUDDIN
PHONE: (708) 235-2692
COMPANY: COMMONWEALTH EDISON
ACCOUNT NUMBER: _____



| | | |
|-----------------------------|-------------------|-----------|
| USER NAME = \$USER\$ | DESIGNED - AV, EA | REVISED - |
| PLOT SCALE = 40.0000' / in. | DRAWN - EA, AV | REVISED - |
| PLOT DATE = \$DATE\$ | CHECKED - MS | REVISED - |
| | DATE - 2/4/2022 | REVISED - |

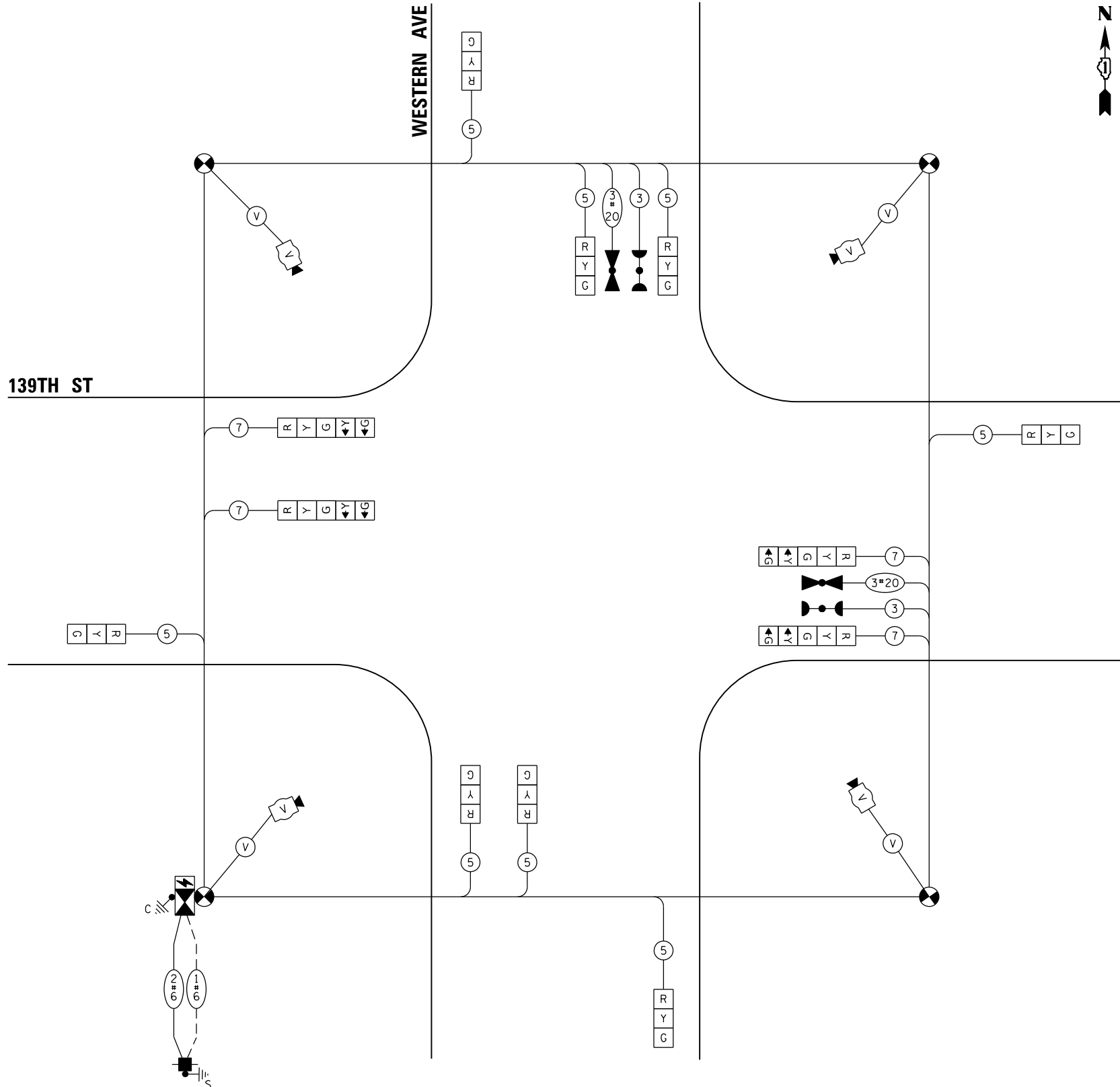
**STATE OF ILLINOIS
DEPARTMENT OF TRANSPORTATION**

**TEMPORARY CABLE PLAN, TEMPORARY PHASE DESIGNATION DIAGRAM,
AND TEMPORARY EMERGENCY VEHICLE PREEMPTION SEQUENCE
WESTERN AVE AT 139TH ST**

SCALE: N.T.S. SHEET NO. OF SHEETS STA. TO STA.

| F.A.P. RTE. | SECTION | COUNTY | TOTAL SHEETS | SHEET NO. |
|--------------------|------------|--------|--------------|-----------|
| 370 | 2017-060TS | COOK | 24 | 17 |
| CONTRACT NO. 62G03 | | | | |

TS 5880

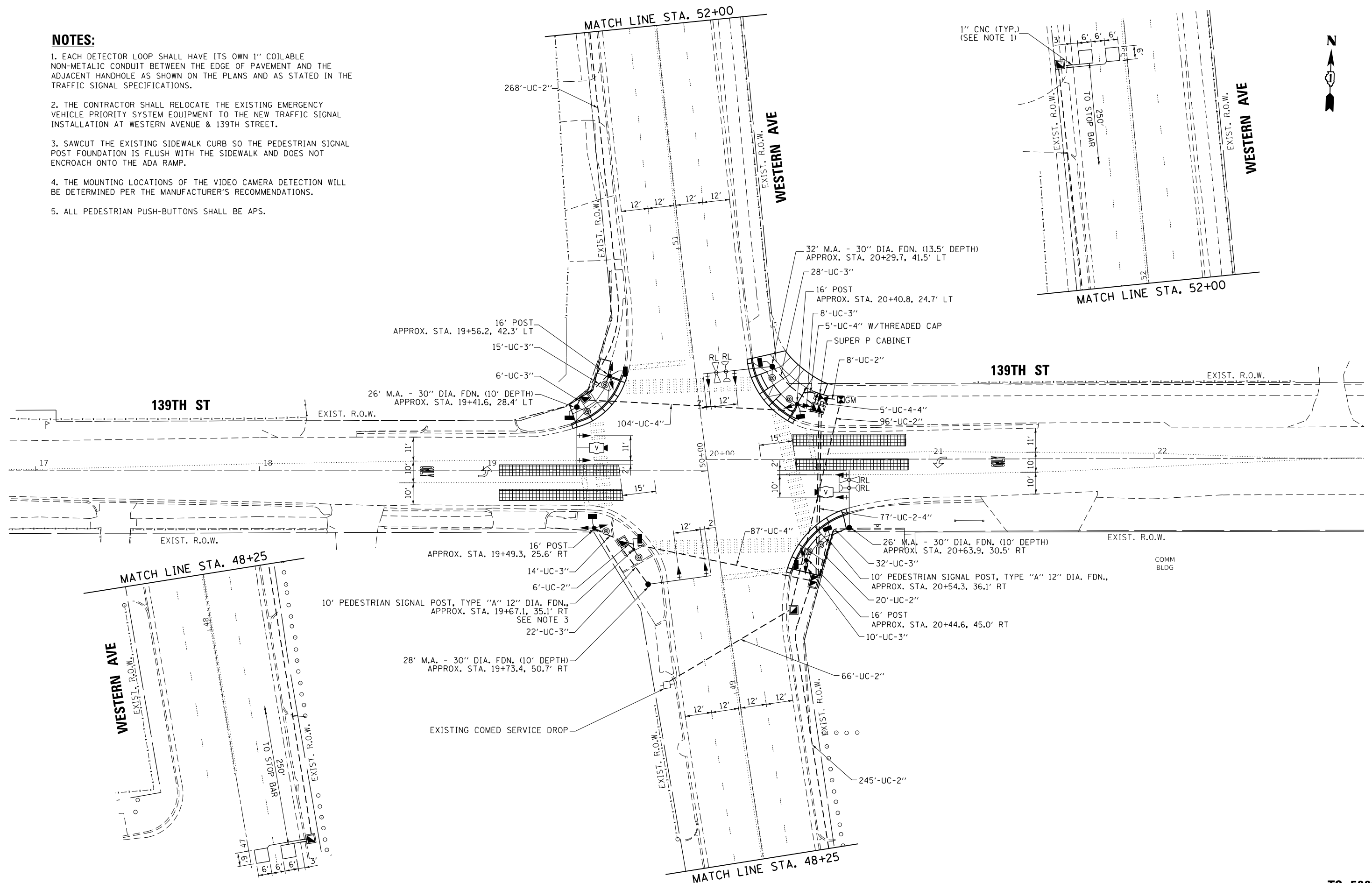


CABLE PLAN
(NOT TO SCALE)

FILE NAME = K:\PROJECTS\Projects 2021\21-139-485-Contract 62G03 - Western Ave at 139th St\DOT\CADD\Sheets\16.WESTERN AVE @ 139TH STREET.TEMP.CO.dgn

NOTES:

1. EACH DETECTOR LOOP SHALL HAVE ITS OWN 1" COILABLE NON-METALIC CONDUIT BETWEEN THE EDGE OF PAVEMENT AND THE ADJACENT HANDHOLE AS SHOWN ON THE PLANS AND AS STATED IN THE TRAFFIC SIGNAL SPECIFICATIONS.
2. THE CONTRACTOR SHALL RELOCATE THE EXISTING EMERGENCY VEHICLE PRIORITY SYSTEM EQUIPMENT TO THE NEW TRAFFIC SIGNAL INSTALLATION AT WESTERN AVENUE & 139TH STREET.
3. SAWCUT THE EXISTING SIDEWALK CURB SO THE PEDESTRIAN SIGNAL POST FOUNDATION IS FLUSH WITH THE SIDEWALK AND DOES NOT ENCROACH ONTO THE ADA RAMP.
4. THE MOUNTING LOCATIONS OF THE VIDEO CAMERA DETECTION WILL BE DETERMINED PER THE MANUFACTURER'S RECOMMENDATIONS.
5. ALL PEDESTRIAN PUSH-BUTTONS SHALL BE APS.



FILE NAME = K:\PROJECTS\Projects 2021\21-139-485-Contract 62603 - Western Ave at 139th St\DOT\CADD\Sheets\17.Western Ave @ 139th Street_INT.dgn

GA GANDHI AND ASSOCIATES, INC.
 ENGINEERS AND PLANNERS
 5035 N. NORTHWEST HIGHWAY
 SUITE 206
 CHICAGO, ILLINOIS 60630 TEL: (773) 774-5900

| | | |
|-----------------------------|-------------------|-----------|
| USER NAME = \$USER\$ | DESIGNED - AV, EA | REVISED - |
| PLOT SCALE = 40.0000' / in. | DRAWN - EA, AV | REVISED - |
| PLOT DATE = \$DATE\$ | CHECKED - MS | REVISED - |
| | DATE - 2/4/2022 | REVISED - |

**STATE OF ILLINOIS
 DEPARTMENT OF TRANSPORTATION**

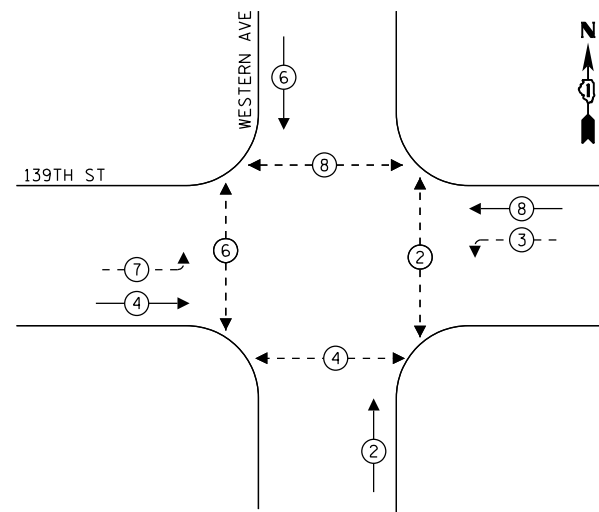
**TRAFFIC SIGNAL MODERNIZATION PLAN
 WESTERN AVE AT 139TH ST**

SCALE: 1"=20' SHEET NO. OF SHEETS STA. TO STA.

| | | | | |
|---|------------|--------|--------------|-----------|
| F.A.P. RTE. | SECTION | COUNTY | TOTAL SHEETS | SHEET NO. |
| 370 | 2017-060TS | COOK | 24 | 18 |
| CONTRACT NO. 62603 | | | | |
| FED. ROAD DIST. NO. - ILLINOIS FED. AID PROJECT | | | | |

TS 5880

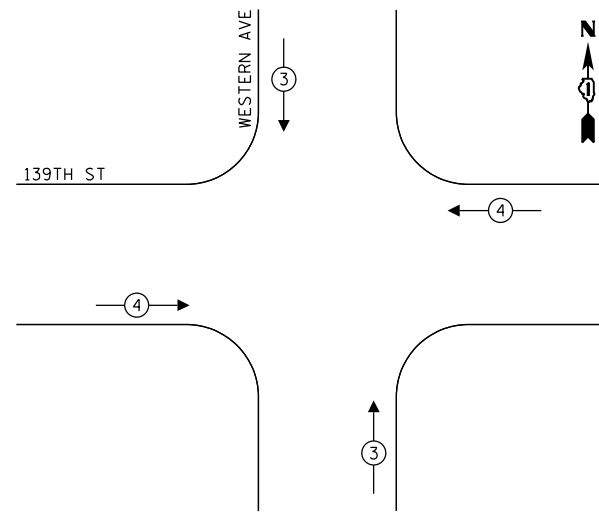
PROPOSED CONTROLLER SEQUENCE



LEGEND:

- ← ⊙ ← PROTECTED PHASE
- ← ⊙ - - PROTECTED/PERMITTED PHASE
- ← ⊙ → PEDESTRIAN PHASE
- ⊙ OL OVERLAP

**PROPOSED EMERGENCY VEHICLE
PREEMPTION SEQUENCE**



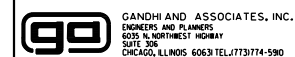
**TRAFFIC SIGNAL
ELECTRICAL SERVICE REQUIREMENTS**

| TYPE | NO. OF LAMPS | LED WATTAGE | % OPERATION | TOTAL WATTAGE |
|------------------|--------------|-------------|-------------|---------------|
| SIGNAL (RED) | 16 | 11 | 50 | 88.0 |
| (YELLOW) | 16 | 20 | 5 | 16.0 |
| (GREEN) | 16 | 12 | 45 | 86.4 |
| PERMISSIVE ARROW | 8 | 10 | 10 | 8.0 |
| PED. SIGNAL | 8 | 20 | 100 | 160.0 |
| CONTROLLER | 1 | 100 | 100 | 100.0 |
| UPS | 1 | 25 | 100 | 25.0 |
| VIDEO SYSTEM | 1 | 150 | 100 | 150.0 |
| BLANK-OUT SIGN | - | 25 | 5 | - |
| FLASHER | - | - | 50 | - |
| STREET NAME SIGN | - | 120 | 50 | - |
| LUMINAIRE | - | 240 | 50 | - |
| TOTAL = | | | | 633.4 |

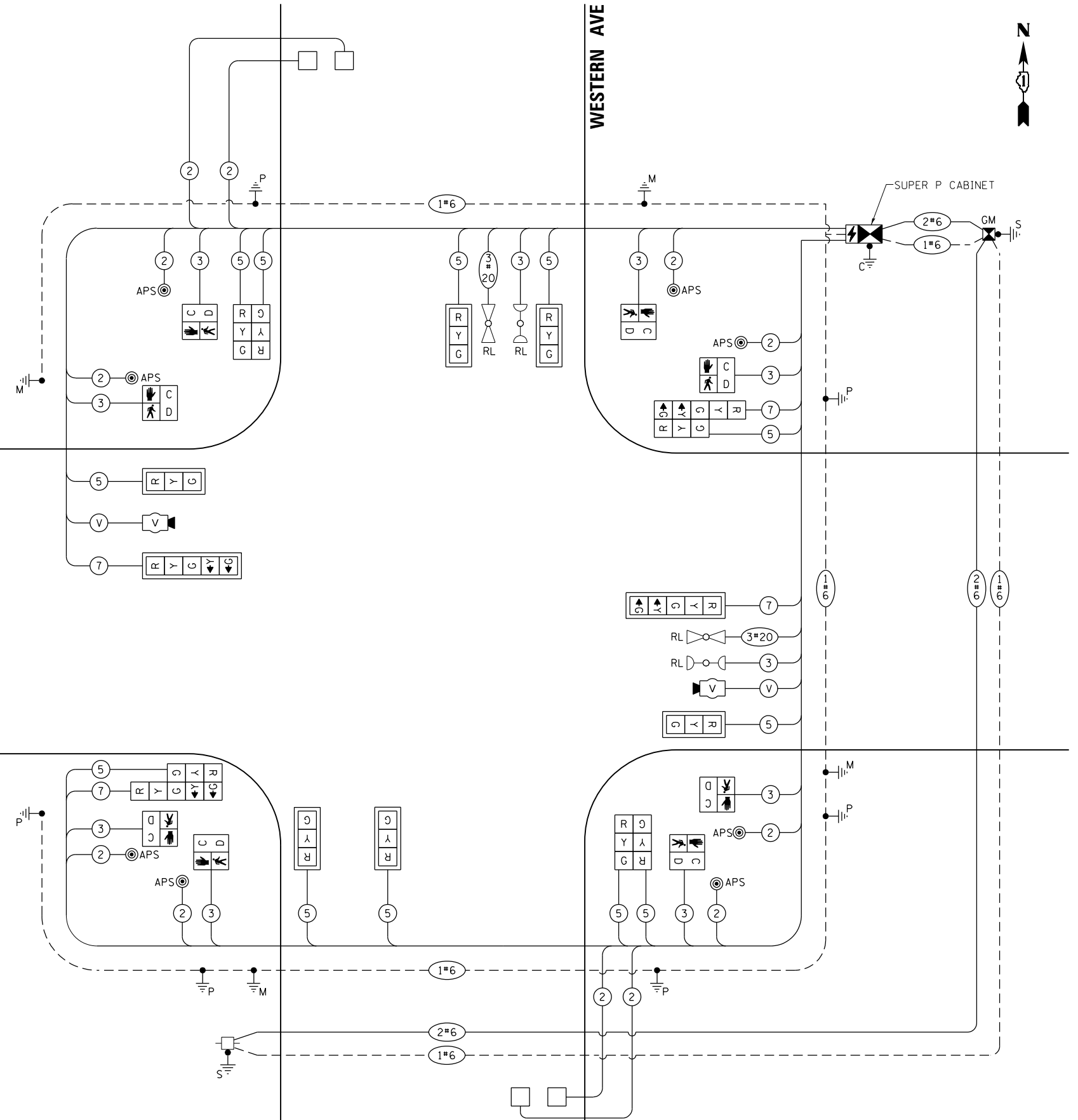
ENERGY COSTS TO:

ILLINOIS DEPARTMENT OF TRANSPORTATION
201 WEST CENTER COURT
SCHAUMBURG, IL 60196

ENERGY SUPPLY: CONTACT: ILYAS MOHIUDDIN
PHONE: (708) 235-2692
COMPANY: COMMONWEALTH EDISON
ACCOUNT NUMBER: 22980-77168



| | |
|-------------------|-----------|
| DESIGNED - AV, EA | REVISED - |
| DRAWN - EA, AV | REVISED - |
| CHECKED - MS | REVISED - |
| DATE - 2/4/2022 | REVISED - |



CABLE PLAN
(NOT TO SCALE)

STATE OF ILLINOIS
DEPARTMENT OF TRANSPORTATION

**CABLE PLAN, PHASE DESIGNATION DIAGRAM,
AND EMERGENCY VEHICLE PREEMPTION SEQUENCE
WESTERN AVE AT 139TH ST**

SCALE: N.T.S. SHEET NO. OF SHEETS STA. TO STA.

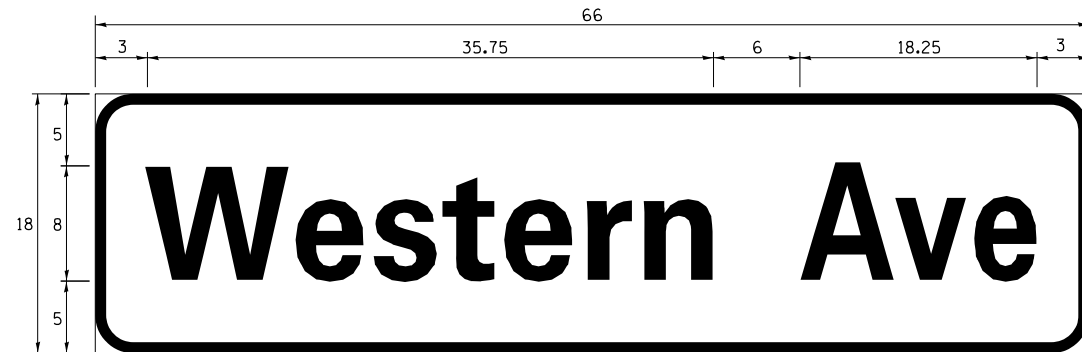
| | | | | |
|---|------------|--------|--------------|-----------|
| F.A.P. RTE. | SECTION | COUNTY | TOTAL SHEETS | SHEET NO. |
| 370 | 2017-060TS | COOK | 24 | 19 |
| CONTRACT NO. 62G03 | | | | |
| FED. ROAD DIST. NO. - [ILLINOIS] FED. AID PROJECT | | | | |

TS 5880

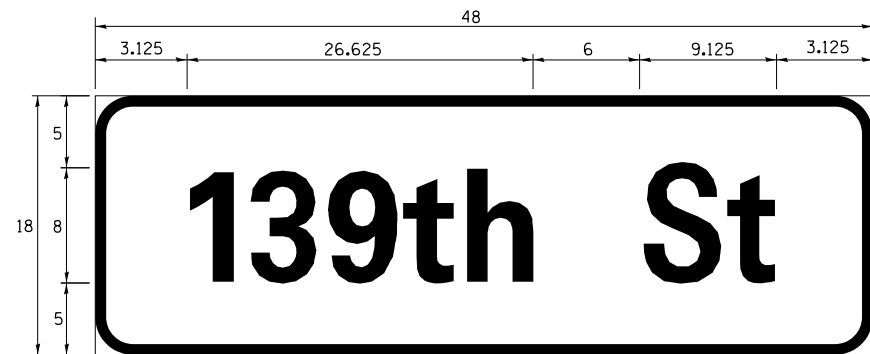
FILE NAME = K:\PROJECTS\Projects\2021\21-139-485-Contract 62G03 - Western Ave at 139th St\DOT\CADD\Sheets\18.WESTERN AVE @ 139TH STREET.CAD.dgn

SIGN PANEL – TYPE 1 OR TYPE 2

ALL DIMENSIONS ARE IN INCHES UNLESS NOTED OTHERWISE



| DESIGN SERIES | AREA (SQ FT) | SIGN PANEL TYPE | SHEETING TYPE | QTY. REQUIRED |
|---------------|--------------|-----------------|---------------|---------------|
| D | 8.25 | 1 | ZZ | 2 |



| DESIGN SERIES | AREA (SQ FT) | SIGN PANEL TYPE | SHEETING TYPE | QTY. REQUIRED |
|---------------|--------------|-----------------|---------------|---------------|
| D | 6.0 | 1 | ZZ | 2 |

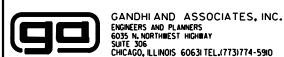
NOTE: FOR ADDITIONAL DESIGN AND INSTALLATION INFORMATION PLEASE SEE DISTRICT ONE MAST ARM MOUNTED STREET NAME SIGNS DETAIL.

SCHEDULE OF QUANTITIES

| ITEM DESCRIPTION | UNITS | TOTAL QTY. |
|---|-------|------------|
| SIGN PANEL - TYPE 1 | SQ FT | 28.5 |
| UNDERGROUND CONDUIT, GALVANIZED STEEL, 2" DIA. | FOOT | 709 |
| UNDERGROUND CONDUIT, GALVANIZED STEEL, 3" DIA. | FOOT | 135 |
| UNDERGROUND CONDUIT, GALVANIZED STEEL, 4" DIA. | FOOT | 370 |
| HANDHOLE | EACH | 5 |
| DOUBLE HANDHOLE | EACH | 2 |
| ELECTRIC CABLE IN CONDUIT, SIGNAL NO. 14 2C | FOOT | 1,128 |
| ELECTRIC CABLE IN CONDUIT, SIGNAL NO. 14 3C | FOOT | 1,474 |
| ELECTRIC CABLE IN CONDUIT, SIGNAL NO. 14 5C | FOOT | 1,980 |
| ELECTRIC CABLE IN CONDUIT, SIGNAL NO. 14 7C | FOOT | 662 |
| ELECTRIC CABLE IN CONDUIT, LEAD-IN, NO. 14 1 PAIR | FOOT | 1,556 |
| ELECTRIC CABLE IN CONDUIT, SERVICE, NO. 6 2C | FOOT | 223 |
| ELECTRIC CABLE IN CONDUIT, EQUIPMENT GROUNDING CONDUCTOR, NO. 6 1C | FOOT | 925 |
| TRAFFIC SIGNAL POST, GALVANIZED STEEL 16 FT. | EACH | 4 |
| STEEL MAST ARM ASSEMBLY AND POLE, 26 FT. | EACH | 2 |
| STEEL MAST ARM ASSEMBLY AND POLE, 28 FT. | EACH | 1 |
| STEEL MAST ARM ASSEMBLY AND POLE, 32 FT. | EACH | 1 |
| CONCRETE FOUNDATION, TYPE A | FOOT | 20 |
| CONCRETE FOUNDATION, TYPE C | FOOT | 4 |
| CONCRETE FOUNDATION, TYPE E 30-INCH DIAMETER | FOOT | 43.5 |
| SIGNAL HEAD, LED, 1-FACE, 3-SECTION, MAST ARM MOUNTED | EACH | 6 |
| SIGNAL HEAD, LED, 1-FACE, 3-SECTION, BRACKET MOUNTED | EACH | 6 |
| SIGNAL HEAD, LED, 1-FACE, 5-SECTION, BRACKET MOUNTED | EACH | 2 |
| SIGNAL HEAD, LED, 1-FACE, 5-SECTION, MAST ARM MOUNTED | EACH | 2 |
| PEDESTRIAN SIGNAL HEAD, LED, 1-FACE, BRACKET MOUNTED WITH COUNTDOWN TIMER | EACH | 8 |
| TRAFFIC SIGNAL BACKPLATE, LOUVERED, FORMED PLASTIC | EACH | 8 |
| INDUCTIVE LOOP DETECTOR | EACH | 4 |
| DETECTOR LOOP, TYPE I | FOOT | 132 |
| TEMPORARY TRAFFIC SIGNAL INSTALLATION | EACH | 1 |
| * RELOCATE EXISTING EMERGENCY VEHICLE PRIORITY SYSTEM, DETECTOR UNIT | EACH | 2 |
| * RELOCATE EXISTING EMERGENCY VEHICLE PRIORITY SYSTEM, PHASING UNIT | EACH | 1 |
| REMOVE EXISTING TRAFFIC SIGNAL EQUIPMENT | EACH | 1 |
| REMOVE EXISTING HANDHOLE | EACH | 8 |
| REMOVE EXISTING DOUBLE HANDHOLE | EACH | 1 |
| REMOVE EXISTING CONCRETE FOUNDATION | EACH | 9 |
| * EMERGENCY VEHICLE PRIORITY SYSTEM LINE SENSOR CABLE, NO. 20 3/C | FOOT | 290 |
| FULL-ACTUATED CONTROLLER AND TYPE SUPER P CABINET | EACH | 1 |
| SERVICE INSTALLATION, GROUND MOUNTED, METERED | EACH | 1 |
| PEDESTRIAN SIGNAL POST, 10 FT | EACH | 2 |
| VIDEO VEHICLE DETECTION SYSTEM, SINGLE APPROACH | EACH | 2 |
| UNINTERRUPTABLE POWER SUPPLY, SPECIAL | EACH | 1 |
| ACCESSIBLE PEDESTRIAN SIGNALS | EACH | 8 |
| CONCRETE FOUNDATION, TYPE A 12-INCH DIAMETER | FOOT | 8 |
| TEMPORARY TRAFFIC SIGNAL TIMING | EACH | 1 |

* 100% COST TO VILLAGE OF POSEN

K:\PROJECTS\Projects\2021\21-139-485-Contract 62603 - Western Ave at 139th St\DOT\CADD\Sheets\19_Western Ave at 139th Street.dgn



GANDHI AND ASSOCIATES, INC.
ENGINEERS AND PLANNERS
6035 N. NORTHWEST HIGHWAY
SUITE 206
CHICAGO, ILLINOIS 60630 TEL: 773/774-5900

| | | |
|-----------------------------|-------------------|-----------|
| USER NAME = \$USER* | DESIGNED - AV, EA | REVISED - |
| | DRAWN - EA, AV | REVISED - |
| PLOT SCALE = 40.0000' / in. | CHECKED - MS | REVISED - |
| PLOT DATE = \$DATE* | DATE - 2/4/2022 | REVISED - |

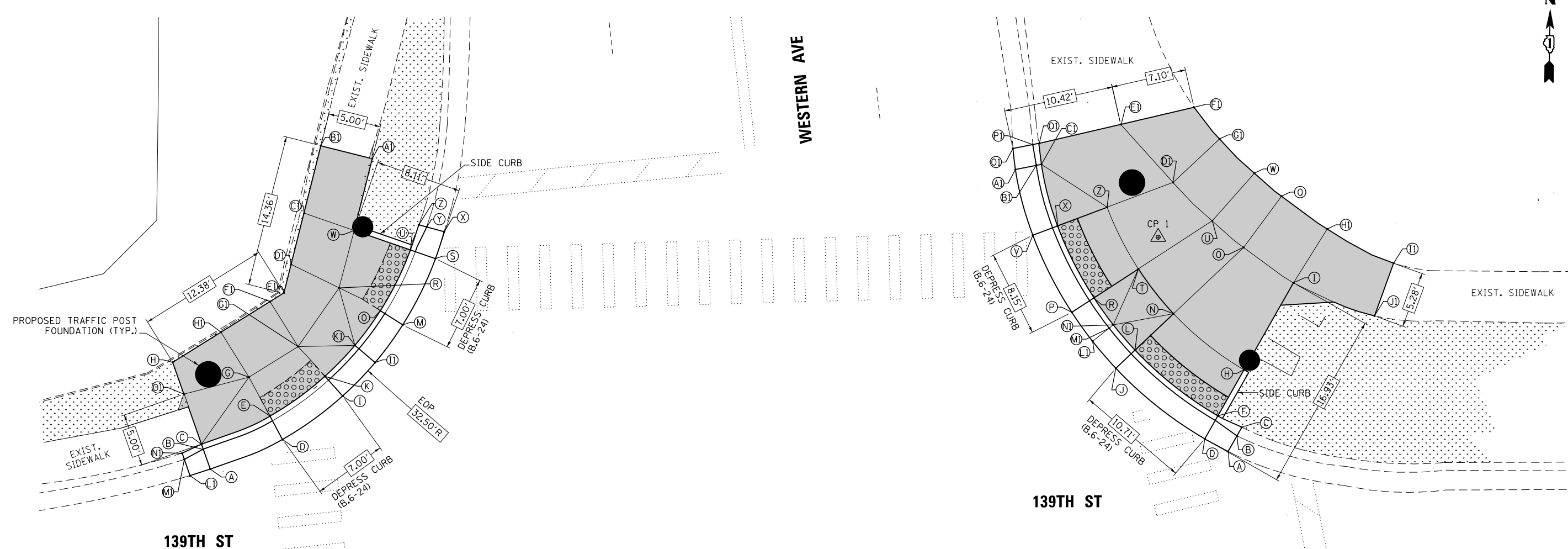
STATE OF ILLINOIS
DEPARTMENT OF TRANSPORTATION

MAST ARM MOUNTED STREET NAME SIGNS
AND SCHEDULE OF QUANTITIES
WESTERN AVE AT 139TH ST

SCALE: N.T.S. SHEET NO. OF SHEETS STA. TO STA.

| | | | | |
|--------------------------------|------------|--------|--------------------|-----------|
| F.A.P. RTE. | SECTION | COUNTY | TOTAL SHEETS | SHEET NO. |
| 370 | 2017-060TS | COOK | 24 | 20 |
| FED. ROAD DIST. NO. - ILLINOIS | | | FED. AID PROJECT | |
| | | | CONTRACT NO. 62603 | |

TS 5880



| POINT | EX. ELEV. | PR. ELEV. |
|-------|-----------|-----------|
| A | (599.100) | 599.100 |
| B | (599.106) | 599.000 |
| C | (599.465) | 599.500 |
| D | (599.030) | 599.030 |
| E | (598.010) | 598.950 |
| F | NOT USED | |
| G | (599.380) | 599.029 |
| H | (599.706) | 599.500 |
| I | (598.960) | 598.960 |
| J | NOT USED | |
| K | (598.950) | 598.880 |
| L | NOT USED | |
| M | (599.020) | 599.020 |
| N | NOT USED | |
| O | (599.010) | 598.993 |
| P | NOT USED | |
| Q | NOT USED | |
| R | (599.570) | 599.077 |
| S | (599.200) | 599.200 |
| T | NOT USED | |

| POINT | EX. ELEV. | PR. ELEV. |
|-------|-----------|-----------|
| U | (599.570) | 599.120 |
| V | NOT USED | |
| W | (599.880) | 599.183 |
| X | (599.250) | 599.250 |
| Y | (599.200) | 599.200 |
| Z | (599.710) | 599.710 |
| AI | (599.930) | 599.900 |
| BI | (599.930) | 599.891 |
| CI | (599.880) | 599.220 |
| DI | (599.820) | 599.150 |
| EI | (599.760) | 599.100 |
| FI | (599.760) | 599.047 |
| GI | (599.700) | 598.952 |
| HI | (599.700) | 599.100 |
| II | (598.959) | 598.959 |
| JI | NOT USED | |
| KI | (599.247) | 599.089 |
| LI | (599.110) | 599.110 |
| MI | (599.116) | 599.116 |
| NI | (599.475) | 599.475 |
| OI | (599.300) | 599.300 |

| SEGMENT | LENGTH (FT) | SLOPE (%) |
|---------|-------------|-----------|
| D1-E1 | 2.75 | 1.82 |
| E1-F1 | 1.56 | 3.39 |
| R-C1 | 7.77 | -1.84 |
| F1-H1 | 5.45 | -0.97 |
| O-K1 | 4.06 | -2.37 |
| K-K1 | 4.06 | -5.15 |
| C-E | 6.98 | 7.88 |
| W-U | 6.00 | 1.6 |
| G1-F1 | 3.83 | -5.15 |
| K-G1 | 3.79 | -1.90 |
| E-K | 6.41 | 1.09 |
| R-W | 5.60 | -1.89 |
| G-HI | 5.00 | -1.42 |
| G-F1 | 7.40 | -0.24 |
| HI-G1 | 7.40 | 2.00 |
| O-U | 6.39 | -1.99 |
| R-D1 | 5.02 | -1.45 |
| W-C1 | 5.00 | -0.74 |

| SEGMENT | LENGTH (FT) | SLOPE (%) |
|---------|-------------|-----------|
| D1-C1 | 5.00 | -1.40 |
| R-C1 | 7.77 | -1.84 |
| F1-H1 | 5.45 | -0.97 |
| O-K1 | 4.06 | -2.37 |
| K-K1 | 4.06 | -5.15 |
| C-E | 6.98 | 7.88 |
| G-O1 | 6.35 | -4.27 |
| HI-H | 5.36 | -7.46 |
| O1-C | 5.00 | -4.00 |
| A-D | 7.37 | 0.95 |
| W-A1 | 6.98 | -10.27 |
| BI-C1 | 6.55 | 10.25 |
| A1-B1 | 5.00 | 0.18 |
| M-S | 6.98 | -2.58 |
| D-I | 6.99 | 1.00 |
| S-X | 2.67 | -1.87 |
| O1-H | 3.18 | -6.29 |

| SEGMENT | LENGTH (FT) | SLOPE (%) |
|---------|-------------|-----------|
| D1-C1 | 6.00 | -1.60 |
| I-HI | 6.00 | -1.50 |
| O-HI | 5.31 | 1.32 |
| HI-II | 7.04 | 1.93 |
| G1-W | 4.61 | -1.58 |
| X-C1 | 6.01 | -6.81 |
| R-N1 | 3.14 | -8.26 |
| L-N1 | 3.14 | -8.89 |
| II-J1 | 5.28 | -2.44 |
| Q-O | 6.00 | 0.83 |
| W-U | 6.00 | 1.6 |
| G1-F1 | 3.83 | -5.15 |
| F1-E1 | 7.10 | 2.66 |
| E1-O1 | 7.93 | 4.99 |
| N-T | 5.37 | -0.37 |
| T-R | 5.00 | 1.80 |

| SEGMENT | LENGTH (FT) | SLOPE (%) |
|---------|-------------|-----------|
| NI-N | 5.78 | 3.27 |
| H-I | 9.43 | -7.22 |
| N-O | 9.10 | -8.02 |
| Z-C1 | 7.41 | -4.31 |
| Z-D1 | 6.64 | -7.99 |
| T-U | 8.32 | -8.00 |
| Z-U | 9.99 | -6.04 |
| D1-E1 | 7.37 | -1.41 |
| T-N1 | 5.78 | -2.92 |
| I-J1 | 8.26 | -1.01 |
| U-O | 3.89 | -1.16 |
| W-Q | 3.36 | -3.54 |
| N-H | 8.56 | -0.69 |
| F-H | 5.00 | 0.14 |
| F-L | 9.98 | 1.56 |
| L-N | 5.00 | -1.80 |
| Q-I | 5.76 | -0.17 |
| R-X | 7.61 | -0.80 |
| X-Z | 5.00 | -1.80 |
| T-Z | 6.52 | -0.94 |
| U-D1 | 5.17 | 1.41 |
| N-H | 8.56 | -0.69 |

| POINT | EX. ELEV. | PR. ELEV. |
|-------|-----------|-----------|
| A | (599.066) | 599.080 |
| B | (599.016) | 599.030 |
| C | (599.416) | 599.383 |
| D | (598.969) | 599.066 |
| E | NOT USED | |
| F | NOT USED | |
| G | NOT USED | |
| H | (599.600) | 599.979 |
| I | (599.819) | 599.660 |
| J | (598.910) | 598.910 |
| K | NOT USED | |
| L | NOT USED | |
| M | NOT USED | |
| N | (599.390) | 598.920 |
| O | (599.700) | 599.650 |
| P | (598.930) | 598.930 |
| Q | NOT USED | |
| R | (599.300) | 598.850 |
| S | NOT USED | |
| T | (599.400) | 598.940 |
| U | (599.720) | 599.605 |
| V | NOT USED | |

| POINT | EX. ELEV. | PR. ELEV. |
|-------|-----------|-----------|
| W | (599.850) | 599.701 |
| X | (599.301) | 598.911 |
| Y | NOT USED | |
| Z | (599.580) | 599.001 |
| A1 | (598.941) | 598.941 |
| B1 | (598.993) | 598.820 |
| C1 | (599.424) | 599.320 |
| D1 | (599.700) | 599.532 |
| E1 | (599.636) | 599.636 |
| F1 | (599.825) | 599.825 |
| G1 | (599.840) | 599.628 |
| H1 | (599.750) | 599.750 |
| I1 | (599.614) | 599.614 |
| J1 | (599.743) | 599.743 |
| K1 | NOT USED | |
| L1 | (598.929) | 598.929 |
| M1 | (598.756) | 598.809 |
| N1 | (599.113) | 599.109 |
| O1 | (598.950) | 598.950 |
| P1 | (598.670) | 598.670 |
| Q1 | (599.240) | 599.240 |

LEGEND:

- PROPOSED SIDEWALK
- PROPOSED DETECTABLE WARNINGS
- EXISTING GRASS AREA
- PROPOSED C & G (B.6-24)

CONTROL POINT; 1
 ELEVATION; 599.541
 NORTHING; 1,812,443.095
 EASTING; 1,162,998.516
 DESCRIPTION; X-CUT ON SIDEWALK AT NORTHEAST CORNER OF WESTERN AVE AND 139th STREET

FILE NAME = K:\PROJECTS\Projects\2021\21-139-485-Contract 62603 - Western Ave at 139th St\1001\CADD\Sheets\20-Western Ave\139th St NW-NE.dwg Ramp.dgn



| | | |
|--------------------------|-----------------|---------------------|
| USER NAME = \$USER\$ | DESIGNED - AV | REVISED - 3/18/2022 |
| PLOT SCALE = 10.00' / 1" | DRAWN - AV | REVISED - |
| PLOT DATE = \$DATE\$ | CHECKED - MS | REVISED - |
| | DATE - 2/4/2022 | REVISED - |

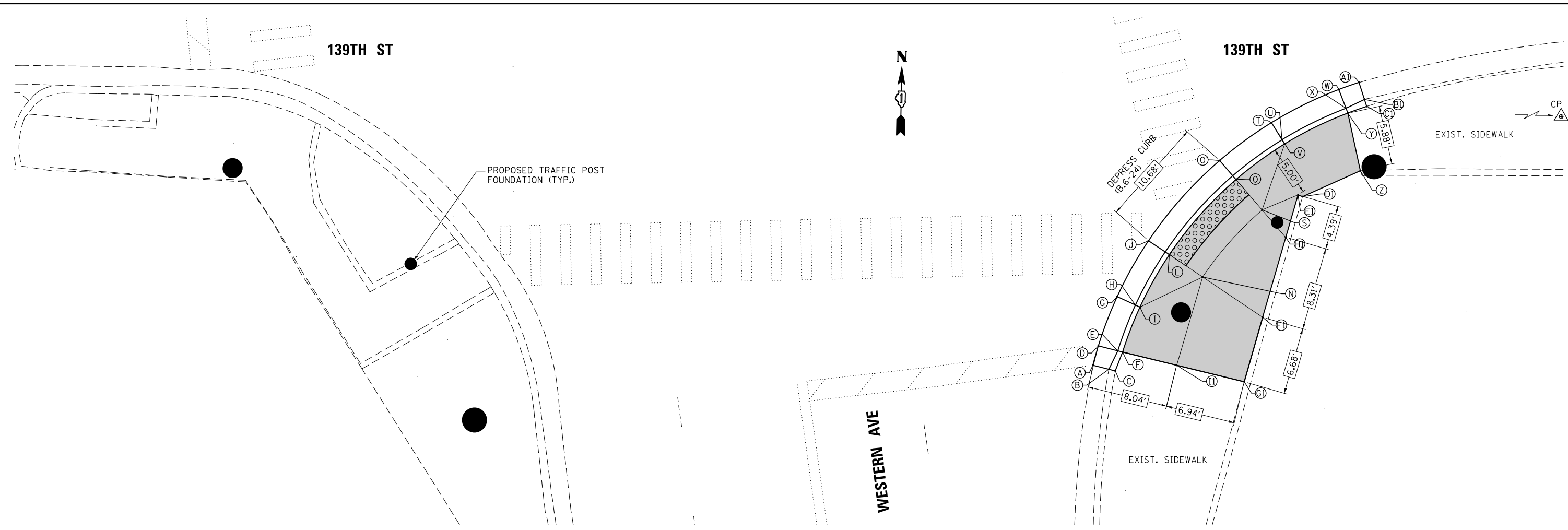
**STATE OF ILLINOIS
 DEPARTMENT OF TRANSPORTATION**

**PROPOSED ADA RAMP DESIGN
 WESTERN AVE AT 139TH ST**

SCALE: 1"=5' SHEET NO. OF SHEETS STA. TO STA.

| | | | | |
|---|--------------------|-------------|-----------------|--------------|
| F.A.P. RTE. 370 | SECTION 2017-060TS | COUNTY COOK | TOTAL SHEETS 24 | SHEET NO. 21 |
| CONTRACT NO. 62603 | | | | |
| FED. ROAD DIST. NO. - ILLINOIS FED. AID PROJECT | | | | |

FILE NAME = K:\PROJECTS\Projects 2021\21-139-485-Contract 62603 - Western Ave at 139th St\DOT\CADD\Sheets\21.Western Ave\139th St SW-SE-ADA Ramp.dgn



| SEGMENT | LENGTH (FT) | SLOPE (%) |
|---------|-------------|-----------|
| L-M | 2.00 | -1.50 |
| M-N | 4.00 | -1.8 |
| Q-R | 2.00 | -1.50 |
| R-S | 4.00 | -1.80 |
| S-N | 8.41 | -1.14 |
| M-R | 9.48 | 1.01 |
| Q-V | 6.00 | -8.65 |
| L-I | 6.00 | -2.80 |
| N-F1 | 5.22 | -1.99 |
| S-H1 | 1.60 | -4.80 |
| H1-E1 | 4.39 | -6.77 |
| G1-F1 | 6.68 | 8.05 |
| V-Y | 7.02 | -1.00 |
| V-Z | 8.02 | -3.33 |
| N-G1 | 9.66 | -6.65 |
| I-F | 4.81 | 0.02 |
| G1-I1 | 5.02 | 1.79 |
| N-I1 | 8.49 | -6.50 |
| S-E1 | 3.76 | -9.95 |
| F-I1 | 7.46 | -6.53 |
| N-G1 | 9.66 | -6.65 |

| POINT | EX. ELEV. | PR. ELEV. |
|-------|-----------|-----------|
| A | (598.923) | 598.923 |
| B | (598.850) | 598.850 |
| C | (599.237) | 599.237 |
| D | (598.923) | 598.923 |
| E | (598.853) | 598.803 |
| F | (599.233) | 599.303 |
| G | (598.924) | 598.924 |
| H | (598.788) | 598.804 |
| I | (599.349) | 599.304 |
| J | (599.006) | 599.006 |
| K | NOT USED | |
| L | (599.260) | 599.136 |
| M | (599.400) | |
| N | (599.759) | 599.238 |
| O | (599.130) | 599.130 |
| P | NOT USED | |
| Q | (599.460) | 599.040 |

| POINT | EX. ELEV. | PR. ELEV. |
|-------|-----------|-----------|
| R | NOT USED | |
| S | (599.763) | 599.142 |
| T | (599.180) | 599.180 |
| U | (599.075) | 599.060 |
| V | (599.476) | 599.560 |
| W | (599.250) | 599.250 |
| X | (599.130) | 599.130 |
| Y | (599.600) | 599.630 |
| Z | (599.827) | 599.827 |
| A1 | (599.272) | 599.272 |
| B1 | (599.200) | 599.200 |
| C1 | (599.607) | 599.607 |
| D1 | (599.680) | 599.680 |
| E1 | (599.716) | 599.516 |
| F1 | (599.900) | 599.342 |
| G1 | (599.880) | 599.880 |
| H1 | (599.219) | 599.219 |
| I1 | (599.625) | 599.790 |

CONTROL POINT; 1
 ELEVATION; 599.541
 NORTHING; 1,812,443.095
 EASTING; 1,162,998.516
 DESCRIPTION; X-CUT ON SIDEWALK AT NORTHEAST CORNER OF WESTERN AVE AND 139th STREET

LEGEND:

- PROPOSED SIDEWALK
- PROPOSED DETECTABLE WARNINGS
- EXISTING GRASS AREA
- PROPOSED C & G (B,6-24)

CONTROL POINT; 5
 ELEVATION; 599.541
 NORTHING; 1,812,393.402
 EASTING; 1,163,182.655
 DESCRIPTION; X-CUT ON SIDEWALK AT SOUTH EAST LEG OF 139th STREET EAST OF WESTERN AVE



| | | |
|----------------------------|-----------------|---------------------|
| USER NAME = \$USER* | DESIGNED - AV | REVISED - 3/18/2022 |
| DRAWN - AV | REVISOR - | |
| PLOT SCALE = 10.00' / 1" = | CHECKED - MS | REVISED - |
| PLOT DATE = \$DATE* | DATE - 2/4/2022 | REVISED - |

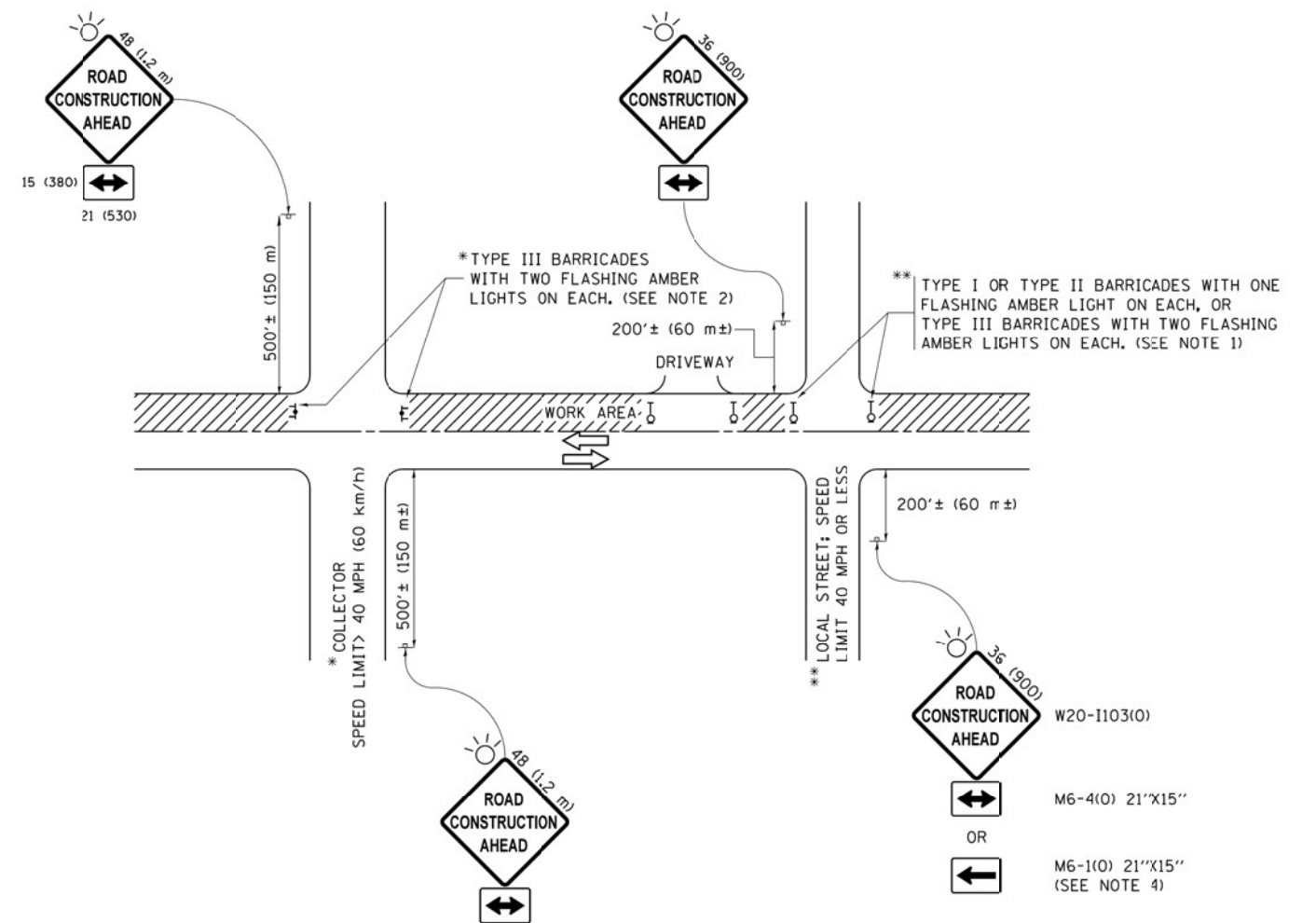
STATE OF ILLINOIS
DEPARTMENT OF TRANSPORTATION

PROPOSED ADA RAMP DESIGN
WESTERN AVE AT 139TH ST

SCALE: 1"=5' SHEET NO. OF SHEETS STA. TO STA.

| F.A.P. RTE. | SECTION | COUNTY | TOTAL SHEETS | SHEET NO. |
|---|------------|--------|--------------|-----------|
| 370 | 2017-060TS | COOK | 24 | 22 |
| CONTRACT NO. 62603 | | | | |
| FED. ROAD DIST. NO. - ILLINOIS FED. AID PROJECT | | | | |

K:\PROJECTS\Projects 2021\21-139-485-Contract 62603 - Western Ave at 139th St\DOT\CADD\Sheets\22_Traffic Control and Protection\tdgn



NOTES:

1. SIDE ROAD WITH A SPEED LIMIT OF 40 MPH (60 km/h) OR LESS AS SHOWN ON THE DRAWING AND AS DIRECTED BY THE ENGINEER:
 - a) ONE "ROAD CONSTRUCTION AHEAD" SIGN 36 x 36 (900x900) WITH A FLASHER MOUNTED ON IT APPROXIMATELY 200' (60 m) IN ADVANCE OF THE MAIN ROUTE.
 - b) THE CLOSED PORTION OF THE MAIN ROUTE SHALL BE PROTECTED BY BLOCKING WITH TYPE I, TYPE II OR TYPE III BARRICADES, 1/3 OF THE CROSS SECTION OF THE CLOSED PORTION.
2. SIDE ROAD WITH A SPEED LIMIT GREATER THAN 40 MPH (60 km/h) AS SHOWN ON THE DRAWING AND AS DIRECTED BY THE ENGINEER:
 - a) ONE "ROAD CONSTRUCTION AHEAD" SIGN 48 x 48 (1.2 m x 1.2 m) WITH A FLASHER MOUNTED ON IT APPROXIMATELY 500' (150 m) IN ADVANCE OF THE MAIN ROUTE.
 - b) THE CLOSED PORTION OF THE MAIN ROUTE SHALL BE PROTECTED BY BLOCKING WITH TYPE III BARRICADES, 1/2 OF THE CROSS SECTION OF THE CLOSED PORTION.
3. CONES MAY BE SUBSTITUTED FOR BARRICADES OR DRUMS AT HALF THE SPACING DURING DAY OPERATIONS. CONES SHALL BE A MINIMUM OF 28 (710) IN HEIGHT.
4. WHEN THE SIDE ROAD LIES BETWEEN THE BEGINNING OF THE MAINLINE SIGNING AND THE WORK ZONE, A SINGLE HEADED ARROW (M6-1) SHALL BE USED IN LIEU OF THE DOUBLE HEADED ARROW (M6-4).
5. WHEN WORK IS BEING PERFORMED ON A SIDE ROAD OR DRIVEWAY, FOLLOW THE APPLICABLE STANDARD(S). THE DIRECTIONAL ARROW (M6-1 OR M6-4) SHALL BE COVERED OR REMOVED WHEN NO LONGER CONSISTENT WITH THE TRAFFIC CONTROL SET-UP.
6. ADVANCE WARNING SIGNS ARE TO BE OMITTED ON DRIVEWAYS UNLESS OTHERWISE SPECIFIED IN THE PLANS OR BY THE ENGINEER.
7. THE TRAFFIC CONTROL AND PROTECTION FOR SIDE ROADS, INTERSECTIONS, AND DRIVEWAYS SHALL BE INCLUDED IN THE COST OF SPECIFIED TRAFFIC CONTROL STANDARDS OR ITEMS.

All dimensions are in inches (millimeters) unless otherwise shown.



| | | |
|-----------------------------|-------------------|---------------------------------|
| USER NAME = \$USER* | DESIGNED - L.H.A. | REVISED - A. HOUSEH 10-15-96 |
| PLOT SCALE = 40.0000' / in. | CHECKED - | REVISED - T. RAMMACHER 01-06-00 |
| PLOT DATE = \$DATE* | DATE - 06-89 | REVISED - A. SCHUETZE 07-01-13 |
| | | REVISED - A. SCHUETZE 09-15-16 |

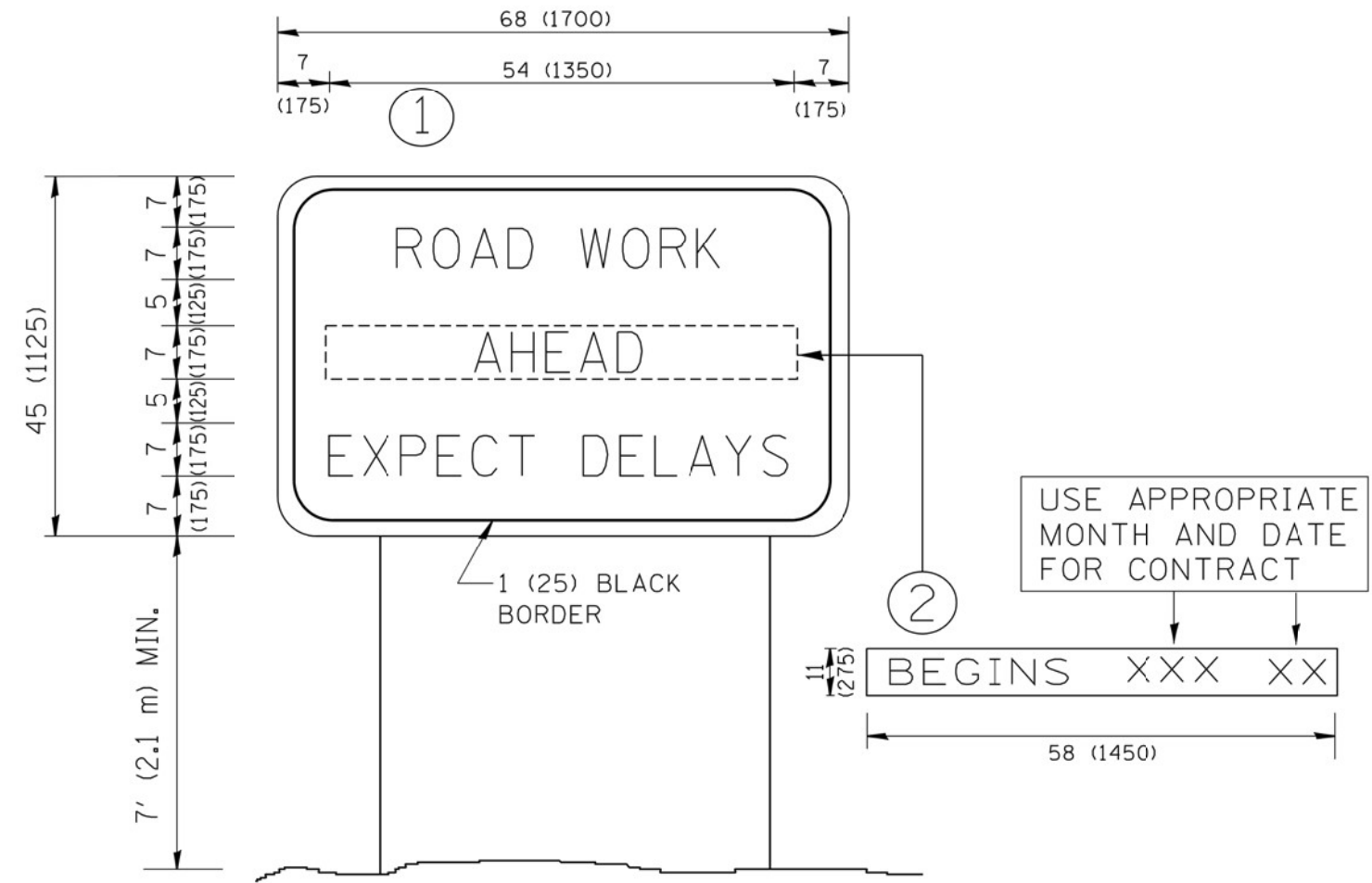
**STATE OF ILLINOIS
DEPARTMENT OF TRANSPORTATION**

**TRAFFIC CONTROL AND PROTECTION FOR
SIDE ROADS, INTERSECTIONS, AND DRIVEWAYS**

SCALE: 1"=20' SHEET NO. OF SHEETS STA. TO STA.

| F.A.P. RTE. | SECTION | COUNTY | TOTAL SHEETS | SHEET NO. |
|---------------------------|------------|--------|---------------------------|-----------|
| 370 | 2017-060TS | COOK | 24 | 23 |
| TC-10 | | | CONTRACT NO. 62G03 | |
| ILLINOIS FED. AID PROJECT | | | | |

FILE NAME = K:\PROJECTS\Projects 2021\21-139-485-Contract 62603 - Western Ave at 139th St\DOT\CADD\Sheets\23-ARTERIAL ROAD INFORMATION SIGN.dgn



NOTES:

1. USE BLACK LETTERING ON ORANGE BACKGROUND.
2. ERECT SIGNS IN ADVANCE OF THE LOCATION FOR THE "ROAD CONSTRUCTION AHEAD" SIGN AT LOCATIONS AS DIRECTED BY THE ENGINEER.
3. ERECT SIGN ① WITH INSTALLED PANEL ② ONE WEEK PRIOR TO THE START OF CONSTRUCTION.
4. REMOVE PANEL ② SOON AFTER THE START OF CONSTRUCTION.
5. SEE SPECIAL PROVISION FOR "TEMPORARY INFORMATION SIGNING" FOR ADDITIONAL INFORMATION.
6. ONE SIGN ASSEMBLY EQUALS 25.70 SQ. FT. (2.3 SQ. M.)
7. SHALL BE PAID FOR AS TEMPORARY INFORMATION SIGNING.

ALL DIMENSIONS ARE IN INCHES (MILLIMETERS) UNLESS OTHERWISE SHOWN.

| | | | |
|--|------------------------------|------------|---------------------------------|
| <p>GANDHI AND ASSOCIATES, INC. ENGINEERS AND PLANNERS 6035 N. NORTHWEST HIGHWAY SUITE 205 CHICAGO, ILLINOIS 60639 TEL: (773) 774-590</p> | USER NAME = \$USER\$ | DESIGNED - | REVISED - R. MIRS 09-15-97 |
| | PLOT SCALE = 40.0000' / 1" = | DRAWN - | REVISED - R. MIRS 12-11-97 |
| | DATE = \$DATE\$ | CHECKED - | REVISED - T. RAMMACHER 02-02-99 |
| | | DATE - | REVISED - C. JUCIUS 01-31-07 |

**STATE OF ILLINOIS
DEPARTMENT OF TRANSPORTATION**

| | | | |
|---|-----------|-----------|--------------|
| ARTERIAL ROAD INFORMATION SIGN | | | |
| SCALE: 1"=20' | SHEET NO. | OF SHEETS | STA. TO STA. |

| | | | | |
|---|------------|--------------------|--------------|-----------|
| F.A.P. RTE. | SECTION | COUNTY | TOTAL SHEETS | SHEET NO. |
| 370 | 2017-060TS | COOK | 24 | 24 |
| TC-22 | | CONTRACT NO. 62G03 | | |
| FED. ROAD DIST. NO. 1 ILLINOIS FED. AID PROJECT | | | | |