

STATE OF ILLINOIS

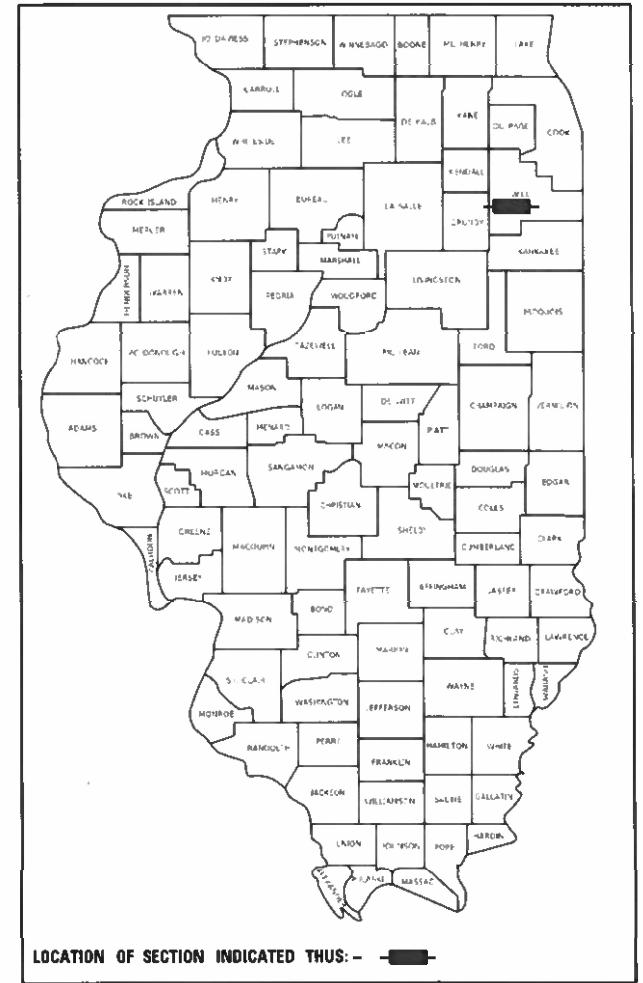
DEPARTMENT OF TRANSPORTATION

PROPOSED HIGHWAY PLANS

MS 4561: I-55 WEST FRONTAGE ROAD
BIRDS BRIDGE MAINTENANCE YARD
22608 S FRONTAGE RD, CHANNAHON
SECTION: 2018-120-RS
PARKING IMPROVEMENT
WILL COUNTY
C-91-272-19

MS RTE.	SECTION	COUNTY	TOTAL SHEETS	SHEET NO.
4561	2018-120-RS	WILL	9	1
		ILLINOIS	CONTRACT NO. 62H62	

D-91-078-19



FOR INDEX OF SHEETS, SEE SHEET NO. 2

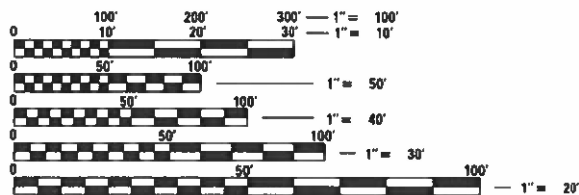
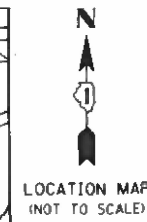
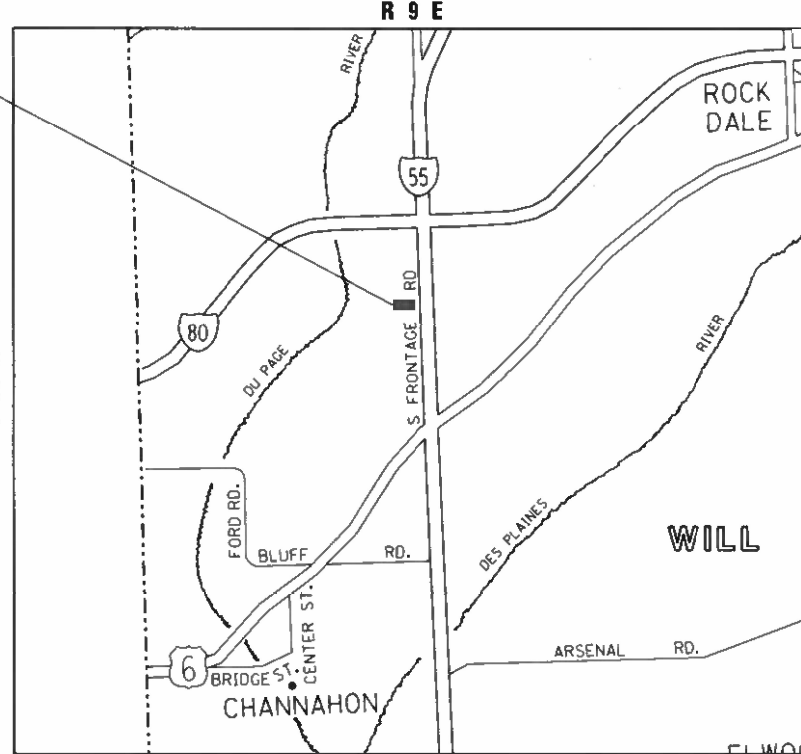
THIS PROJECT IS LOCATED IN CHANNAHON

TRAFFIC DATA:

S FRONTAGE RD:

ADT (2019) = 2,000
SPEED LIMIT = 45 MPH

IMPROVEMENT LOCATION



FULL SIZE PLANS HAVE BEEN PREPARED USING STANDARD ENGINEERING SCALES. REDUCED SIZED PLANS WILL NOT CONFORM TO STANDARD SCALES. IN MAKING MEASUREMENTS ON REDUCED PLANS, THE ABOVE SCALES MAY BE USED.

J.U.L.I.E.
JOINT UTILITY LOCATION INFORMATION FOR EXCAVATORS
1-800-892-0123
OR 811

PROJECT ENGINEER: LUKASZ POCIECHA (847) 705-4255
PROJECT MANAGER: FAWAD AQUEEL

CONTRACT NO. 62H62

GROSS & NET LENGTH = N/A (SPOT IMPROVEMENT)

STATE OF ILLINOIS
DEPARTMENT OF TRANSPORTATION

SUBMITTED February 8 20 22
Jose Luis Lopez REGIONAL ENGINEER
March 25 2022
[Signature] ENGINEER OF DESIGN AND ENVIRONMENT
March 25 2022
Stephen McFadden DIRECTOR OF HIGHWAYS PROJECT IMPLEMENTATION

PRINTED BY THE AUTHORITY OF THE STATE OF ILLINOIS

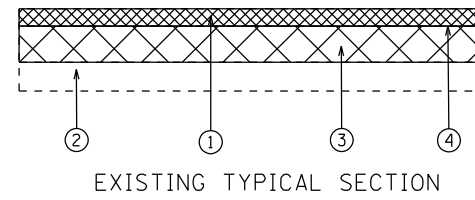
SUMMARY OF QUANTITIES			TOTAL QUANTITIES URBAN	CONSTRUCTION TYPE CODE				
CODE NO	ITEM	UNIT		0044 100% STATE				
20200100	EARTH EXCAVATION	CU YD	1507	1507				
20201200	REMOVAL AND DISPOSAL OF UNSUITABLE MATERIAL	CU YD	74	74				
21101615	TOPSOIL FURNISH AND PLACE, 4"	SO YD	238	238				
21400100	GRADING AND SHAPING DITCHES	FOOT	155	155				
25000210	SEEDING, CLASS 2A	ACRE	0.03	0.03				
25000400	NITROGEN FERTILIZER NUTRIENT	POUND	3.4	3.4				
25000600	POTASSIUM FERTILIZER NUTRIENT	POUND	3.4	3.4				
25100630	EROSION CONTROL BLANKET	SO YD	238	238				
25200200	SUPPLEMENTAL WATERING	UNIT	2.7	2.7				
31101400	SUBBASE GRANULAR MATERIAL, TYPE B 6"	SO YD	6958	6958				
40600275	BITUMINOUS MATERIALS (PRIME COAT)	POUND	13956	13956				
40600290	BITUMINOUS MATERIALS (TACK COAT)	POUND	1396	1396				
40603085	HOT-MIX ASPHALT BINDER COURSE, IL-19.0, N70	TON	1063	1063				

SUMMARY OF QUANTITIES			TOTAL QUANTITIES	CONSTRUCTION TYPE CODE				
CODE NO	ITEM	UNIT		0044 100% STATE				
40604062	HOT-MIX ASPHALT SURFACE COURSE, IL-9.5, MIX "D", N70	TON	527	527				
42000060	WELDED WIRE REINFORCEMENT	SO YD	837	837				
42000300	PORTLAND CEMENT CONCRETE PAVEMENT 8"	SO YD	837	837				
42001300	PROTECTIVE COAT	SO YD	1023	1023				
44000100	PAVEMENT REMOVAL	SO YD	6726	6726				
44000300	CURB REMOVAL	FOOT	445	445				
44213204	TIE BARS 3/4"	EACH	30	30				
48102100	AGGREGATE WEDGE SHOULDER, TYPE B	TON	0.8	0.8				
55100500	STORM SEWER REMOVAL 12"	FOOT	45	45				
60500050	REMOVING CATCH BASINS	EACH	1	1				
60600095	CLASS SI CONCRETE (OUTLET)	CU YD	5	5				
60605000	COMBINATION CONCRETE CURB AND GUTTER, TYPE B-6.24	FOOT	445	445				
60615400	PAVED DITCH, TYPE A-15	FOOT	45	45				

* = SPECIALTY ITEMS

FILE NAME =	USER NAME = mullaneed	DESIGNED -	REVISED -	STATE OF ILLINOIS DEPARTMENT OF TRANSPORTATION	BIRDS BRIDGE MAINTENANCE YARD SUMMARY OF QUANTITIES	MS. RTE. 4561	SECTION 2018-120-R5	COUNTY WILL	TOTAL SHEETS 9	SHEET NO. 3		
pw:\nidat-pw.bentley.com\PW\DOT\Documents\UDOT - Offices\District 1\Projects\DOT\BIR\CADData\Design\107819-str-50.dwg	DRAWN -	CHECKED -	REVISED -			SCALE:	SHEET NO. OF SHEETS	STA. TO STA.	CONTRACT NO. 62H62			
PLOT SCALE = 100,0000' / 1in.	DATE -	REVISED -	REVISED -			FED. ROAD DIST. NO. 1 ILLINOIS FED. AID PROJECT						
PLOT DATE = 2/9/2022	DATE -	REVISED -	REVISED -									

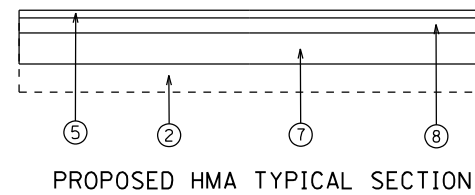
BIRDS BRIDGE MAINTENANCE YARD



LEGEND

- ① EXISTING HMA PAVEMENT (3'-5" TYP)
- ② EXISTING SUBGRADE
- ③ PROPOSED SUBGRADE REMOVAL (EARTH EXCAVATION)
- ④ PROPOSED PAVEMENT REMOVAL (FULL DEPTH)
- ⑤ HOT-MIX ASPHALT SURFACE COURSE, MIX "D", N70 (IL-9.5 MM), 1 1/2"
- ⑥ PROPOSED PCC PAVEMENT 8"
- ⑦ PROPOSED SUBBASE GRANULAR MATERIAL TYPE B, 6"
- ⑧ PROPOSED HOT-MIX ASPHALT BINDER COURSE, IL-19.0, N70, 3"

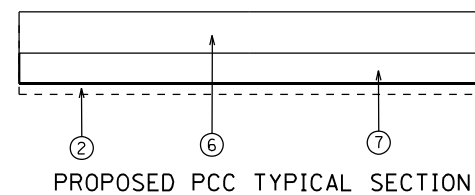
BIRDS BRIDGE MAINTENANCE YARD



NOTES

PROPOSED HMA AND PCC SECTIONS DO NOT HAVE THE SAME TOTAL DEPTH OF EXCAVATION. PLEASE BE AWARE OF ELEVATIONS WHILE EXCAVATING.

BIRDS BRIDGE MAINTENANCE YARD



HOT-MIX ASPHALT MIXTURE REQUIREMENTS		QUALITY MANAGEMENT PROGRAM (QMP)
MIXTURE TYPE	AIR VOIDS(%) @ N _{DES.}	
PAVEMENT RECONSTRUCTION		
HOT-MIX ASPHALT SURFACE COURSE, MIX "D", N70 (IL-9.5 MM), 1 1/2"	4% @ 70 GYR	QC/OA
HOT-MIX ASPHALT BINDER COURSE, IL-19.0, N70, 3"	4% @ 70 GYR	QC/OA
ENTRANCE		
HOT-MIX ASPHALT SURFACE COURSE, MIX "D", N70 (IL-9.5 MM), 1 1/2"	4% @ 70 GYR	QC/OA
HOT-MIX ASPHALT BINDER COURSE, IL-19.0, N70, 8 1/2"	4% @ 70 GYR	QC/OA

QMP DESIGNATION: QUALITY CONTROL/QUALITY ASSURANCE(QA/QC); QUALITY CONTROL FOR PERFORMANCE(OCP); PAY FOR PERFORMANCE(PFP)

THE UNIT WEIGHT USED TO CALCULATE ALL HMA SURFACE MIXTURE QUANTITIES IS 112 LBS/SQ YD/IN.

THE "AC TYPE" FOR POLYMERIZED HMA MIXES SHALL BE "SBS/SBR PG 76-22" AND FOR NON-POLYMERIZED HMA THE "AC TYPE" SHALL BE "PG 64-22" UNLESS MODIFIED BY RECLAIMED MATERIALS SPECIFICATIONS.

MODEL: Default
FILE: \\mlls-pw-bentley.com\PIV\DOT\Documents\DOT Office\District 1\Project\107819\CADD\data\Design\107819-18t-zyp\pic1.dgn

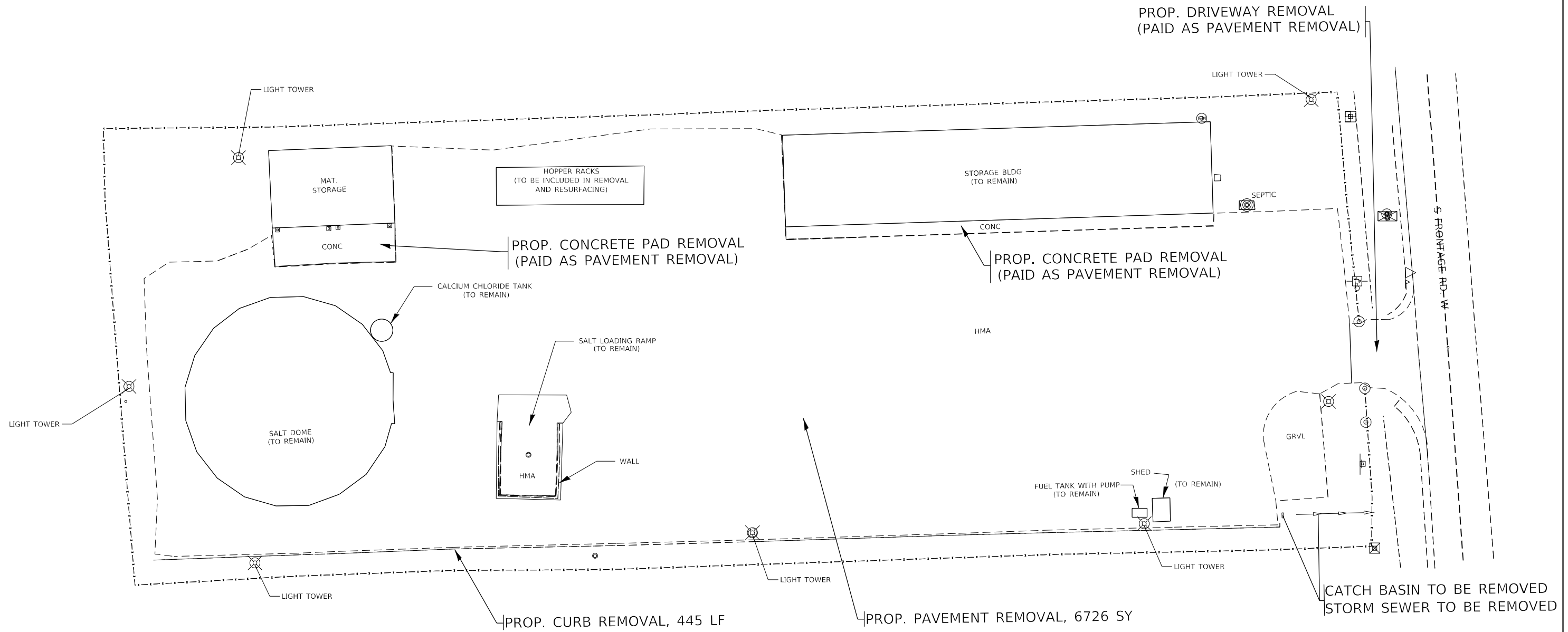
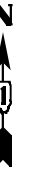
USER NAME = mullanecd	DESIGNED -	REVISED -
PLOT SCALE = 100,0000' / in.	DRAWN -	REVISED -
PLOT DATE = 2/9/2022	CHECKED -	REVISED -
	DATE -	REVISED -

**STATE OF ILLINOIS
DEPARTMENT OF TRANSPORTATION**

**BIRDS BRIDGE MAINTENANCE YARD
TYPICAL SECTIONS**

SCALE: SHEET OF SHEETS STA. TO STA.

MS RTE.	SECTION	COUNTY	TOTAL SHEETS	SHEET NO.
4561	2018-120-R5	WILL	9	5
			CONTRACT NO. 62H62	
		ILLINOIS FED. AID PROJECT		



MODEL: Default
 FILE NAME: p:\ultra-cw-beadley.com\PIV\DOT\Documents\DOT Office\Birds Bridge\11\Project\1107319\CADD\Drawings\1107319-shr-bldg.dwg

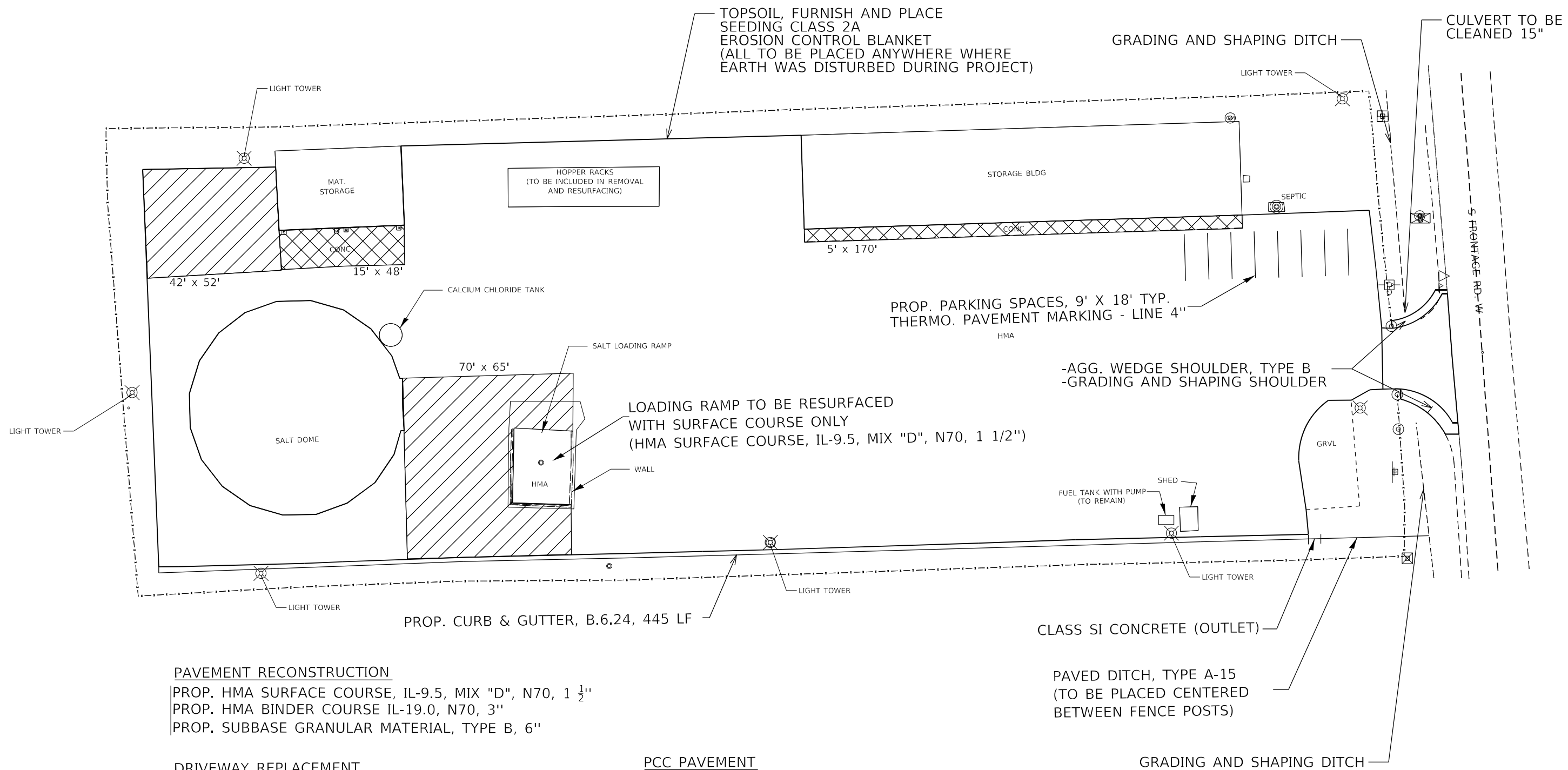
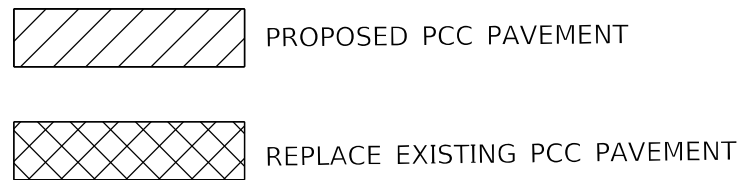
USER NAME = mullanecd	DESIGNED -	REVISED -
	DRAWN -	REVISED -
PLOT SCALE = 40,0000 * / in.	CHECKED -	REVISED -
PLOT DATE = 2/9/2022	DATE -	REVISED -

STATE OF ILLINOIS
DEPARTMENT OF TRANSPORTATION

BIRDS BRIDGE MAINTENANCE YARD
EXISTING SITE CONDITION AND PROPOSED REMOVAL

SCALE: SHEET OF SHEETS STA. TO STA.

MS RTE.	SECTION	COUNTY	TOTAL SHEETS	SHEET NO.
4561	2018-120-R5	WILL	9	6
CONTRACT NO. 62H62				
ILLINOIS FED. AID PROJECT				



PAVEMENT RECONSTRUCTION

PROP. HMA SURFACE COURSE, IL-9.5, MIX "D", N70, 1 1/2"
 PROP. HMA BINDER COURSE IL-19.0, N70, 3"
 PROP. SUBBASE GRANULAR MATERIAL, TYPE B, 6"

DRIVEWAY REPLACEMENT

PROP. HMA SURFACE COURSE, IL-9.5, MIX "D", N70, 1 1/2"
 PROP. HMA BINDER COURSE, IL-19.0 N70, 8 1/2"

PCC PAVEMENT

PROP. PORTLAND CEMENT CONCRETE PAVEMENT, 8"
 PROP. SUBBASE GRANULAR MATERIAL, TYPE B, 6"
 PROP. WELDED WIRE REINFORCEMENT
 PROP. PROTECTIVE COAT

MODEL: Default
 FILE: \\nafe.pw.bea.com\FW\DOT\Documents\DOT Office\Birds Bridge\BIRDS BRIDGE MAINTENANCE YARD\BIRDS BRIDGE MAINTENANCE YARD.dwg
 PROJECT: 107819\CADD\BIRDS BRIDGE MAINTENANCE YARD\BIRDS BRIDGE MAINTENANCE YARD.dwg
 DATE: 2/9/2022

USER NAME = nullanecd	DESIGNED -	REVISED -
	DRAWN -	REVISED -
PLOT SCALE = 40,0000 */ in.	CHECKED -	REVISED -
PLOT DATE = 2/9/2022	DATE -	REVISED -

**STATE OF ILLINOIS
 DEPARTMENT OF TRANSPORTATION**

**BIRDS BRIDGE MAINTENANCE YARD
 PROPOSED SITE PLAN**

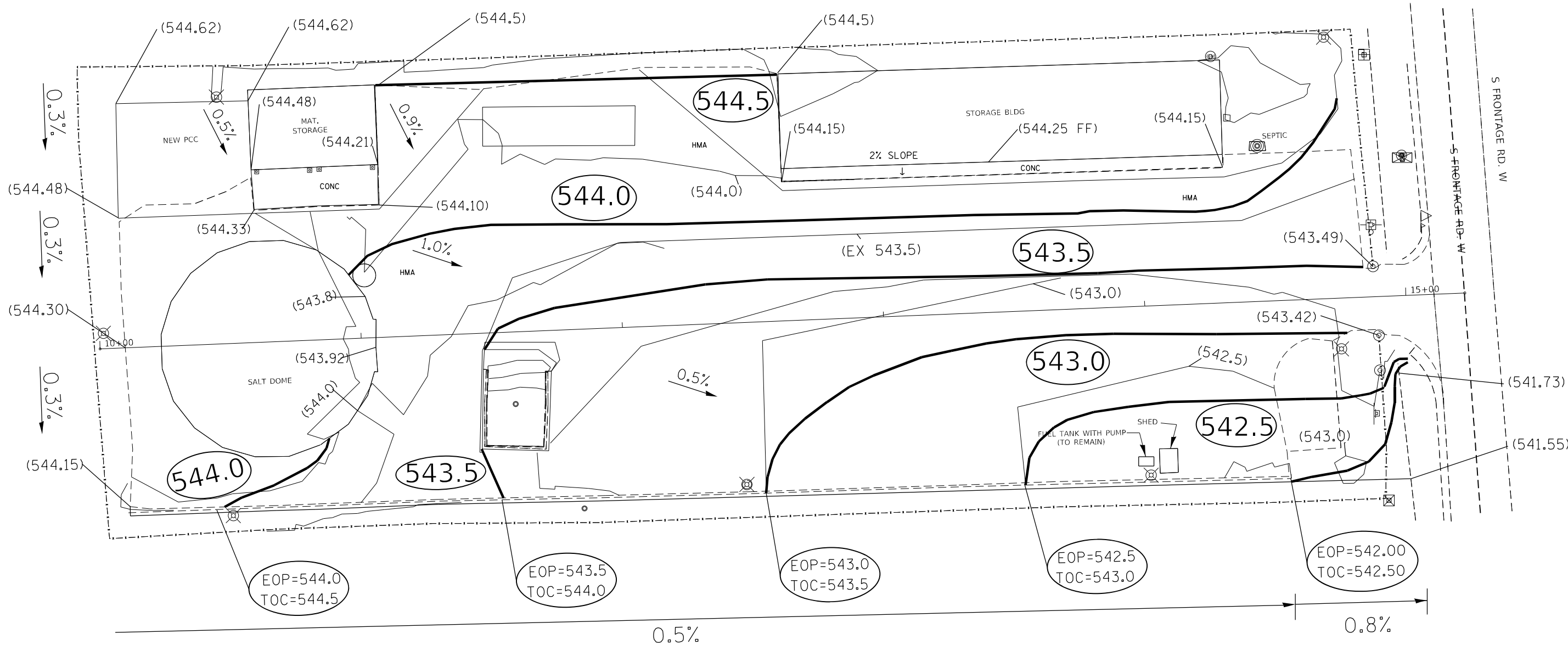
SCALE: SHEET OF SHEETS STA. TO STA.

MS RTE.	SECTION	COUNTY	TOTAL SHEETS	SHEET NO.
4561	2018-120-R5	WILL	9	7
			CONTRACT NO. 62H62	
ILLINOIS FED. AID PROJECT				

LEGEND

(544.5) EXISTING GRADING

544.5 PROPOSED GRADING

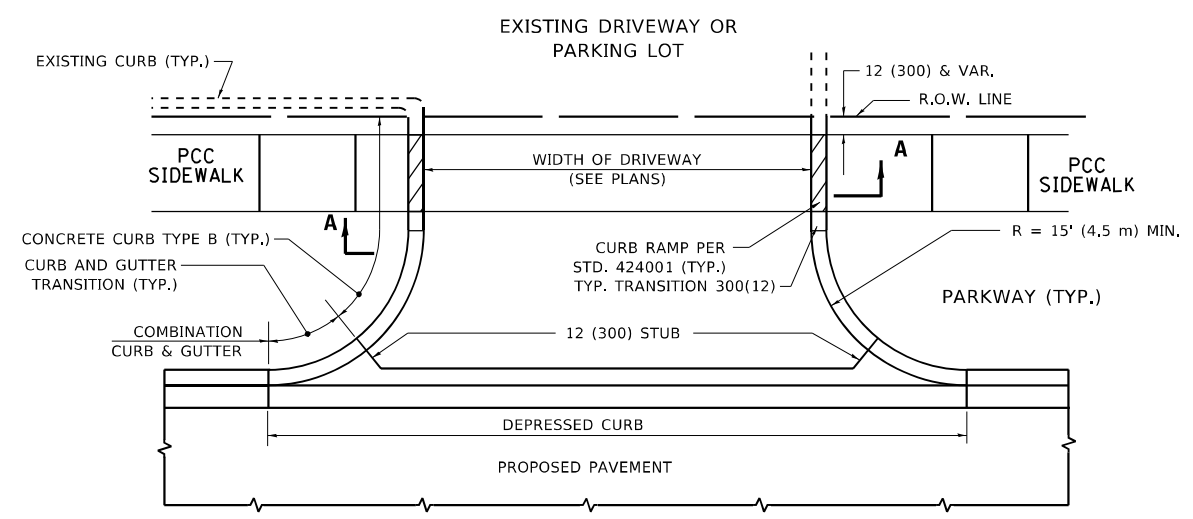


USER NAME = mullanecd	DESIGNED -	REVISED -
PLOT SCALE = 40,3010' / in.	DRAWN -	REVISED -
PLOT DATE = 2/9/2022	CHECKED -	REVISED -
	DATE -	REVISED -

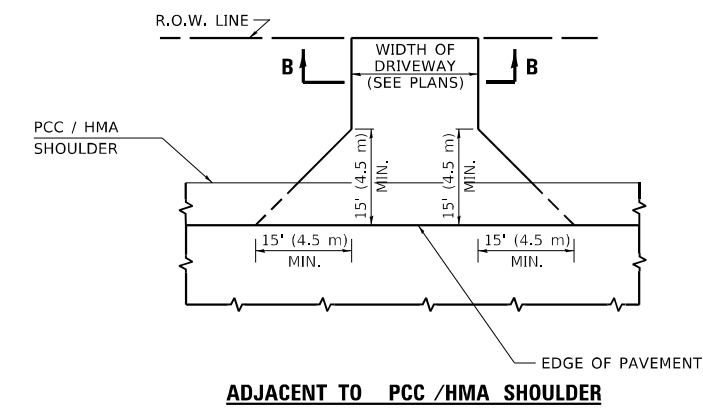
STATE OF ILLINOIS
DEPARTMENT OF TRANSPORTATION

BIRDS BRIDGE MAINTENANCE YARD			
PROPOSED GRADING PLAN			
SCALE:	SHEET	OF	SHEETS
	STA.		TO STA.

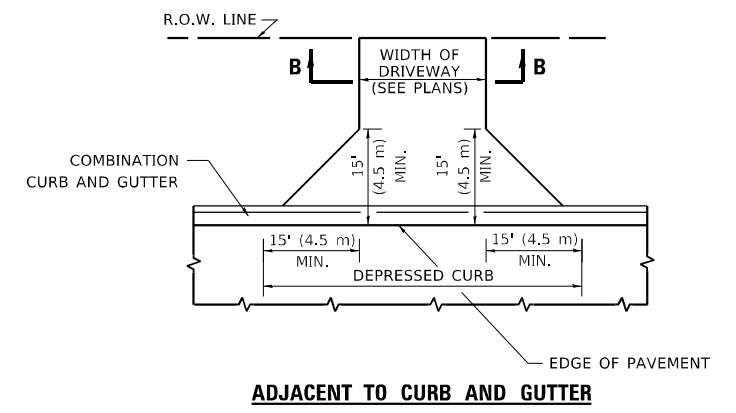
MS RTE.	SECTION	COUNTY	TOTAL SHEETS	SHEET NO.
4561	2018-120-RS	WILL	9	8
CONTRACT NO. 62H62				
ILLINOIS FED. AID PROJECT				



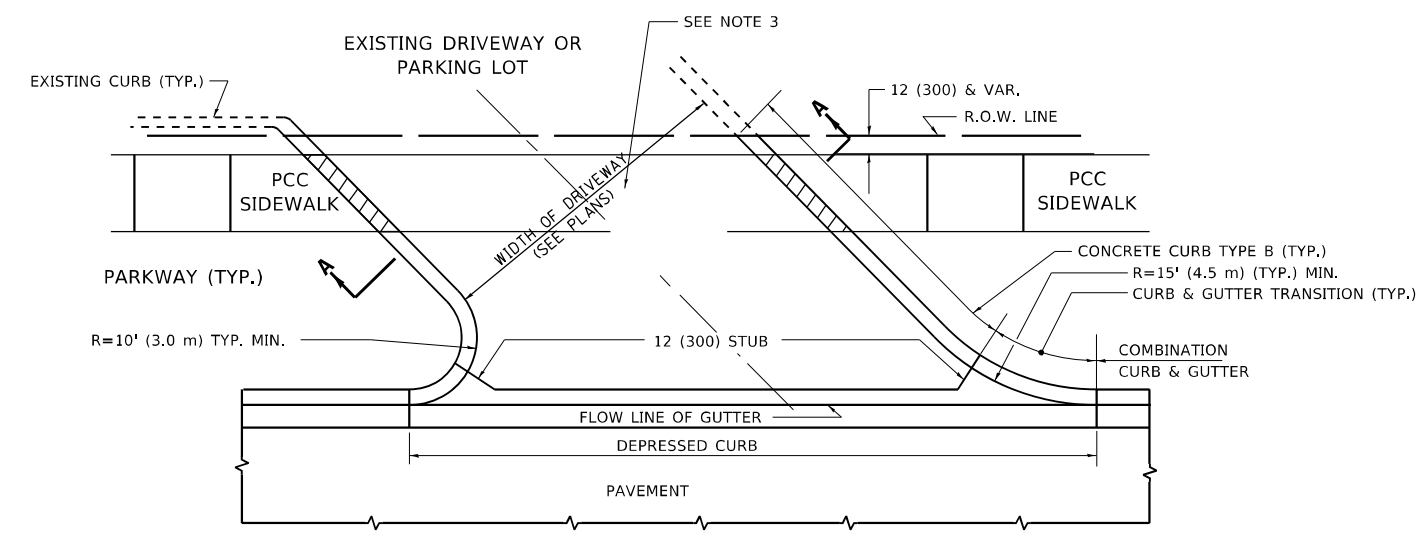
WITH CONCRETE CURB, TYPE B



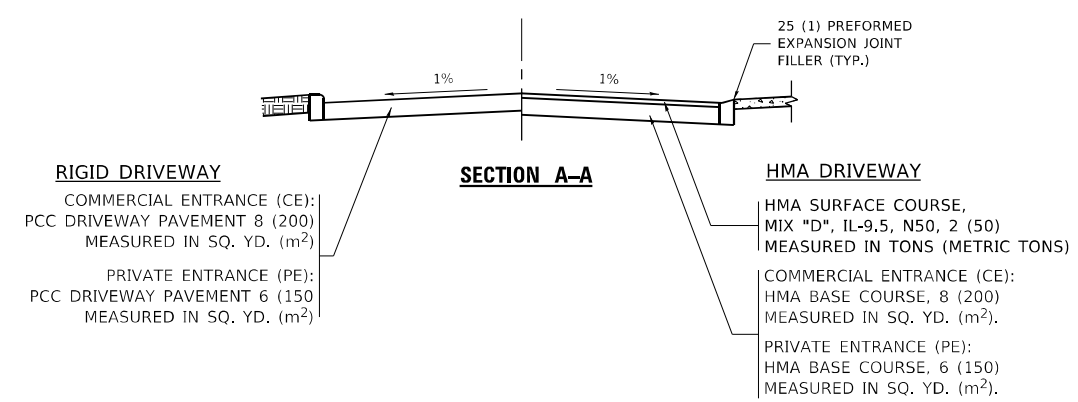
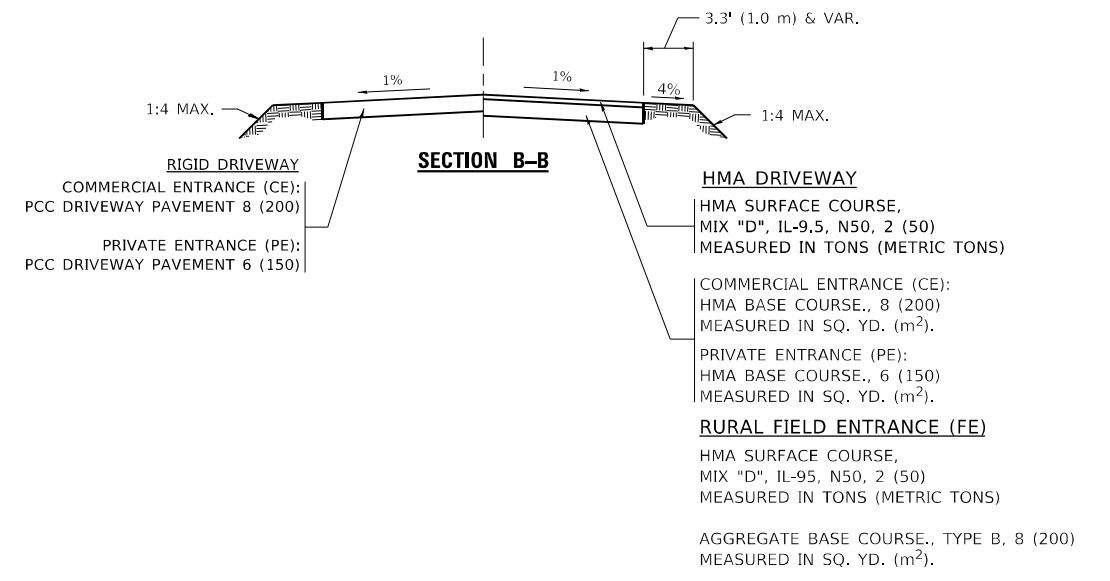
ADJACENT TO PCC /HMA SHOULDER



ADJACENT TO CURB AND GUTTER



WITH CONCRETE CURB, TYPE B



GENERAL NOTES

1. DRIVEWAY SLOPES, LOCATIONS, & GEOMETRIC LAYOUT SHALL BE IN ACCORDANCE WITH THE LATEST EDITION OF THE "HANDBOOK FOR POLICY ON PERMITS FOR ACCESS DRIVEWAYS TO STATE HIGHWAYS". FOR FURTHER LAYOUT REQUIREMENTS, REFER TO ILLUSTRATIONS IN THE PERMIT HANDBOOK. DRIVEWAYS SHALL BE REPLACED IN KIND, UNLESS OTHERWISE NOTED ON THE PLANS.
2. COMMERCIAL DRIVEWAYS SHALL BE CONSTRUCTED WITH CONCRETE CURB, TYPE B RETURNS EXCEPT WHEN THE SIDEWALK EDGE IS 4 FEET (1.2 METERS) OR LESS FROM THE BACK OF CURB, CONSTRUCT A FLARE DRIVEWAY WITHOUT CURB.

ALL DIMENSIONS ARE IN INCHES (MILLIMETERS) UNLESS OTHERWISE NOTED.

MODEL: Default
FILE NAME: p:\projects\paw_bentley.com\p\w\DOT\Documents\DOT Office\Drawings\11\Project\11073 9\CAD\DATA\Design\DrStk.dgn

USER NAME = nullanecd	DESIGNED - R. SHAH	REVISED - R. BORO 06-11-08
	DRAWN -	REVISED - R. BORO 09-06-11
PLOT SCALE = 100,0000' / in.	CHECKED -	REVISED - K. SMITH 08-28-19
PLOT DATE = 2/9/2022	DATE - 11-04-95	REVISED - K. SMITH 02-01-22

**STATE OF ILLINOIS
DEPARTMENT OF TRANSPORTATION**

DRIVEWAY DETAILS - DISTANCE BETWEEN R.O.W. AND FACE OF CURB & EDGE OF SHOULDER ≥ 15'(4.5m)			
SCALE: NONE	SHEET 1 OF 1 SHEETS	STA. TO STA.	

MS RTE.	SECTION	COUNTY	TOTAL SHEETS	SHEET NO.
4561	2018-120-R5	WILL	9	9
BD400-01 (BD-01)		CONTRACT NO. 62H62		
ILLINOIS		FED. AID PROJECT		