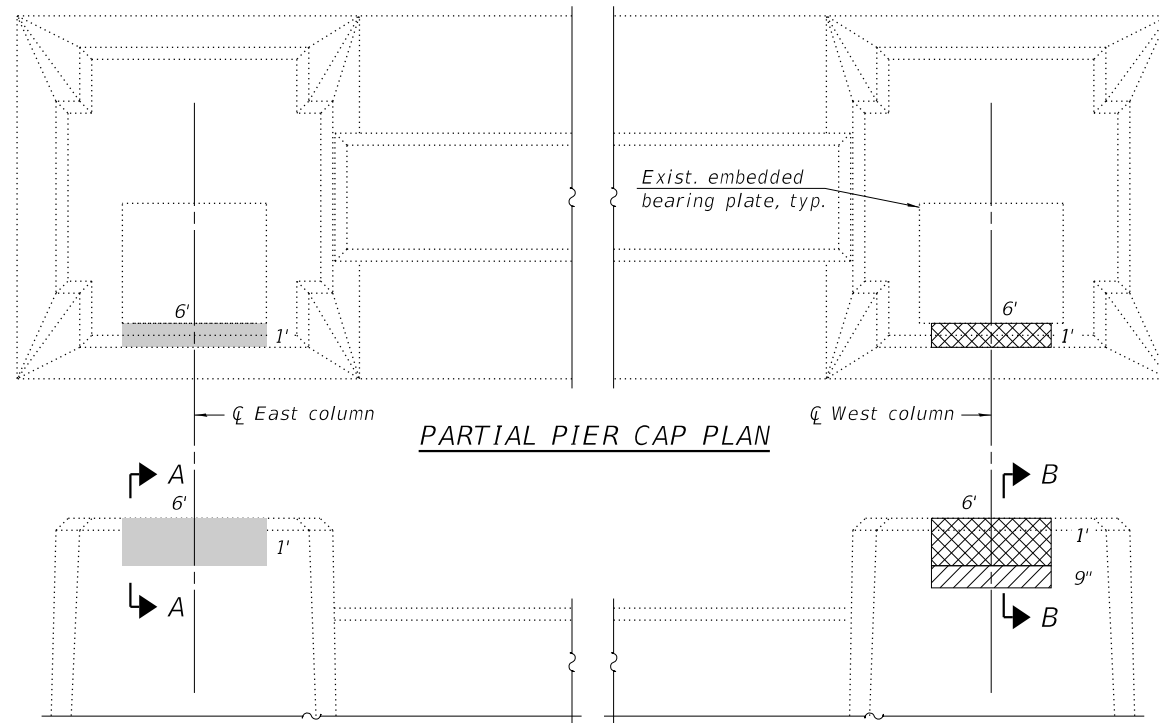




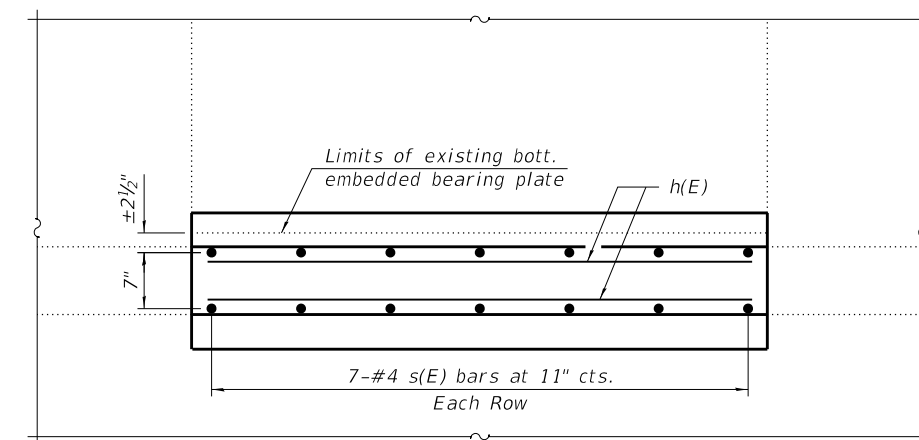
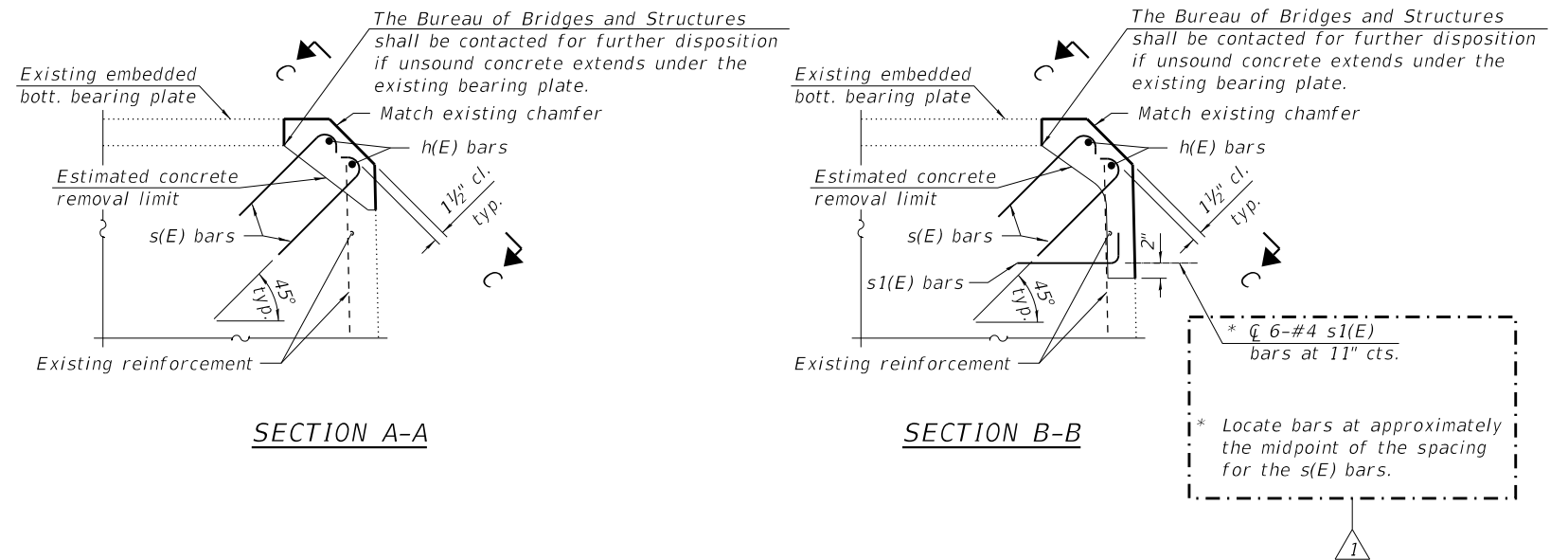
EAST COLUMN PHOTO



WEST COLUMN PHOTO



PARTIAL PIER 2 ELEVATION  
(Looking South)



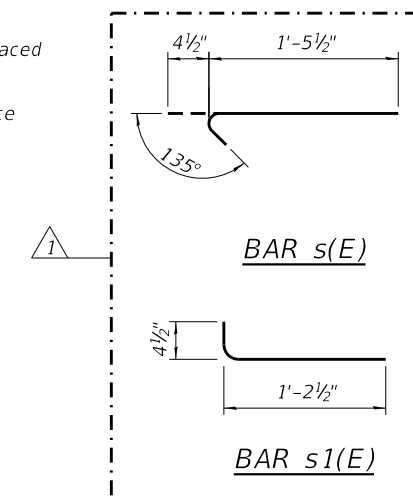
VIEW C-C  
(East column shown. West column similar.)

Notes:

- The concrete repair limits shown are estimated. The Engineer shall field verify the repair limits during construction.
- The concrete area specified for the east column should be removed and replaced to the limits shown (at a minimum) to anchor the area during jacking and prevent an occurrence of the condition observed at the west column.
- The concrete repairs shall be completed prior to commencing jacking for the bearing replacement. The concrete repairs at both locations may be completed at the beginning of construction and do not have to be coordinated with stage construction traffic.
- Concrete removal shall be performed prior to ordering the reinforcement to ensure the reinforcement details shown are sufficient. The Bureau of Bridges and Structures shall be contacted for further disposition if the actual concrete removal limits exceed those shown.
- Hooked s(E) and s1(E) reinforcement bars shall be drilled and grouted in 12 in. min. deep holes and according to Section 584 of the Standard Specifications. Additionally, proof shall be provided that the chemical adhesive chosen by the Contractor satisfies the ICC-ES AC 308 Table 3.8 test requirements.
- Fabricate s(E) and s1(E) bars with a 1 1/2" outside bend radius.

LEGEND

- Concrete to be replaced
- Delaminated concrete
- Spalled concrete



BILL OF MATERIAL

| Bar                                     | No. | Size | Length  | Shape |
|---|-----|------|---------|-------|
| h(E)                                    | 4   | #4   | 5'-8"   | —     |
| s(E)                                    | 28  | #4   | 1'-10"  | —     |
| s1(E)                                   | 6   | #4   | 1'-7"   | —     |
| Structural Repair of Concrete (Special) |     |      | Sq. Ft. | 28.5  |

FILE NAME: C:\SP\WHKS & COL\obs-spring - Projects\DOT BBS\0353 BBS Various\Various\0353.03 Centennial Repairs - Ph II\CADD\CAD\_Sheets\011905200204.dgn



|                        |                   |                       |
|------------------------|-------------------|-----------------------|
| USER NAME = dheberling | DESIGNED - CEH    | REVISED - CEH 4-15-22 |
| PLOT DATE = 4/15/2022  | CHECKED - MJR     | REVISED -             |
| PLOT DATE = 7:23:43 AM | DRAWN - DLH       | REVISED -             |
|                        | CHECKED - CEH/MJR | REVISED -             |

STATE OF ILLINOIS  
DEPARTMENT OF TRANSPORTATION

CONCRETE REPAIR DETAILS  
STRUCTURE NO. 081-9905

SHEET 4 OF 7 SHEETS

|                           |            |             |                    |           |
|---------------------------|------------|-------------|--------------------|-----------|
| F.A.P. RTE.               | SECTION    | COUNTY      | TOTAL SHEETS       | SHEET NO. |
| 308                       | (3B) BRR-1 | ROCK ISLAND | 37                 | 24        |
| ILLINOIS FED. AID PROJECT |            |             | CONTRACT NO. 64N71 |           |

REV. 4/15/22