

STATE OF ILLINOIS
DEPARTMENT OF TRANSPORTATION

F.A.S. RTE.	SECTION	COUNTY	TOTAL SHEETS	SHEET NO.
315	(121,122)RS-3	IROQUOIS	33	1
		ILLINOIS	CONTRACT NO. 66D60	

INDEX OF SHEETS

- 1 COVER SHEET
- 2 GENERAL NOTES
- 3-8 SUMMARY OF QUANTITIES
- 9-10 TYPICAL SECTIONS
- 11 CURVE DATA
- 12 PERMANENT MARKER TABLE
- 13 LINE DIAGRAM
- 14-17 SCHEDULE OF QUANTITIES
- 18-19 PATCHING DETAILS
- 20-22 TAPER DETAILS
- 23-25 DRAINAGE DETAILS
- 26 PAVEMENT MARKING DETAILS
- 27-29 ADA DETAILS
- 30-33 MISC DETAILS

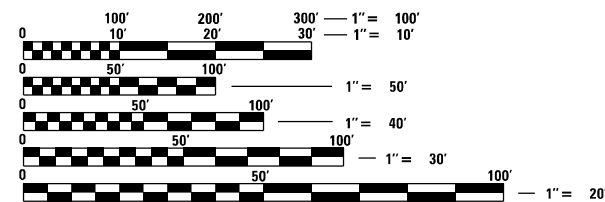
LIST OF ILLINOIS DOT HIGHWAY STANDARDS

- 000001-08 STANDARD SYMBOLS, ABBREVIATIONS AND PATTERNS
- 001006 DECIMAL OF AN INCH AND OF A FOOT
- 424001-11 PERPENDICULAR CURB RAMP FOR SIDEWALKS
- 442101-09 CLASS B PATCHES
- 542301-03 PRECAST REINFORCED CONCRETE FLARED END SECTION
- 606001-0 8 CONCRETE CURB TYPE B AND COMBINATION CONCRETE CURB AND GUTTER
- 635001-02 DELINEATORS
- 701006-05 OFF-ROAD OPERATIONS 2L, 2W, 15' (4.5 m) TO 24" (600 mm) FROM PAVEMENT EDGE
- 701011-04 OFF-ROAD MOVING OPERATIONS 2L, 2W, DAY ONLY
- 701201-05 LANE CLOSURE, 2L, 2W, DAY ONLY, FOR SPEEDS ≥ 45 MPH
- 701301-04 LANE CLOSURE, 2L, 2W, SHORT TIME OPERATIONS
- 701306-04 LANE CLOSURE, 2L, 2W, SLOW MPH MOVING OPERATIONS DAY ONLY, FOR SPEEDS ≥ 45 MPH
- 701311-03 LANE CLOSURE, 2L, 2W, MOVING OPERATIONS - DAY ONLY
- 701801-06 SIDEWALK, CORNER OR CROSSWALK CLOSURE
- 701901-08 TRAFFIC CONTROL DEVICES
- 780001-05 TYPICAL PAVEMENT MARKINGS
- 781001-04 TYPICAL APPLICATIONS RAISED REFLECTIVE PAVEMENT MARKERS

PROPOSED HIGHWAY PLANS

FAS ROUTE 315 (US 52) SECTION (121,122)RS-3 PROJECT STP-KSK7(650) MILLING & RESURFACING (DESIGNED OVERLAY) & ADA IROQUOIS COUNTY

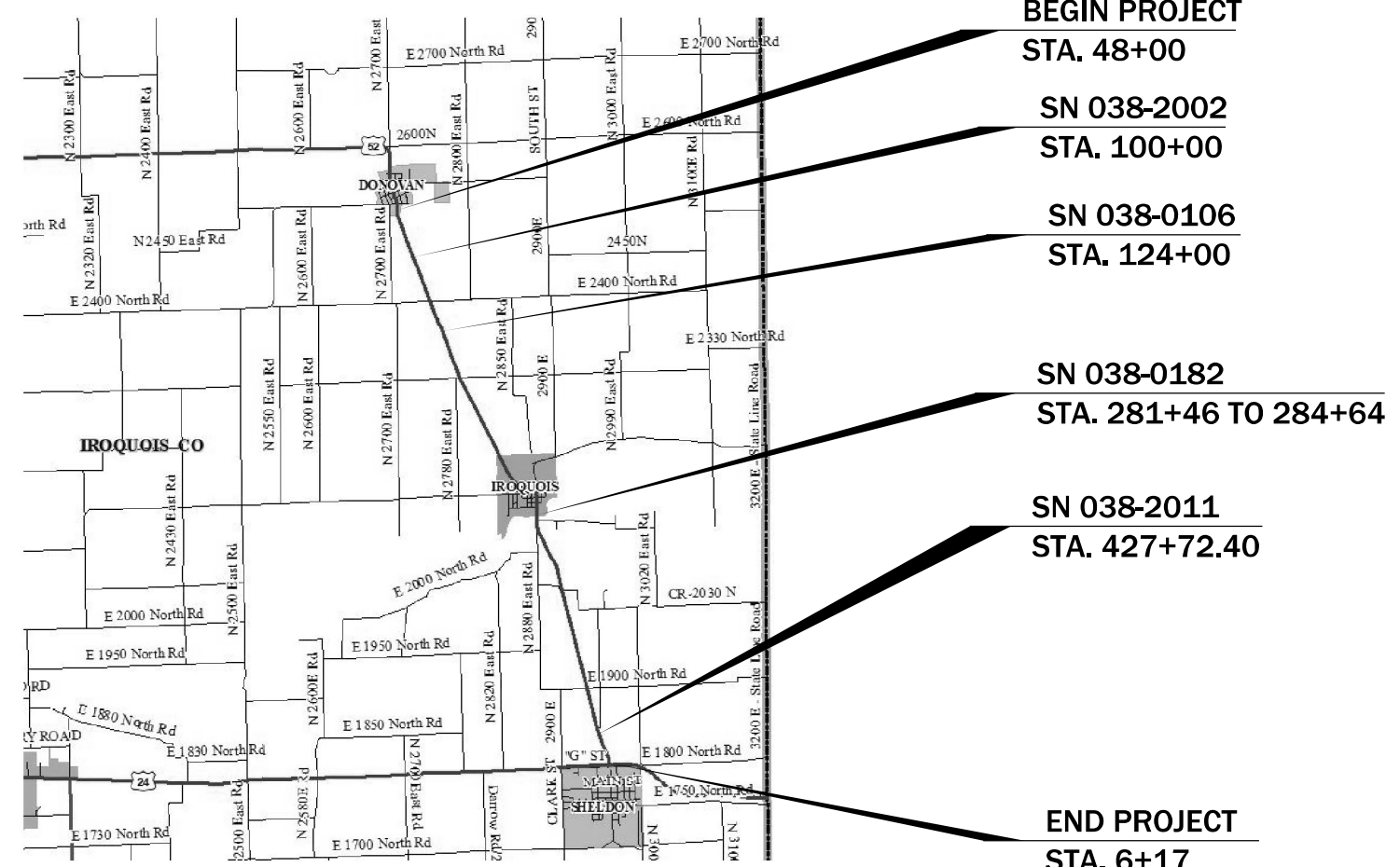
C-93-070-22



FULL SIZE PLANS HAVE BEEN PREPARED USING STANDARD ENGINEERING SCALES, REDUCED SIZED PLANS WILL NOT CONFORM TO STANDARD SCALES. IN MAKING MEASUREMENTS ON REDUCED PLANS, THE ABOVE SCALES MAY BE USED.

J.U.L.I.E.
JOINT UTILITY LOCATION INFORMATION FOR EXCAVATION
1-800-892-0123
OR 811

PROJECT ENGINEER: JACOB OYIER, P.E
UNIT CHIEF: STEPHENIE CARMIN
DISTRICT 3 NO. (815) 434-6131
CONTRACT NO. 66D60



GROSS LENGTH = 39,921 FT. = 7.56 MILE
NET LENGTH = 39,603 FT. = 7.50 MILE

- BEGIN PROJECT
STA. 48+00
- SN 038-2002
STA. 100+00
- SN 038-0106
STA. 124+00
- SN 038-0182
STA. 281+46 TO 284+64
- SN 038-2011
STA. 427+72.40
- END PROJECT
STA. 6+17

FUNCTION CLASSIFICATION
MAJOR COLLECTOR
2019 ADT = 1450
P.V. = 72.8% S.U. = 4.8% M.U. = 22.4%

STATE OF ILLINOIS
DEPARTMENT OF TRANSPORTATION

SUBMITTED February 07, 2022

David Almond
REGIONAL ENGINEER

March 25, 2022
Stephen M. Frantz
ENGINEER OF DESIGN AND ENVIRONMENT

March 2, 2022
Stephen M. Frantz
DIRECTOR OF HIGHWAYS PROJECT IMPLEMENTATION 2

PRINTED BY THE AUTHORITY
OF THE STATE OF ILLINOIS

GENERAL NOTES

THE THICKNESS OF HMA SHOWN ON THE PLANS IS THE NOMINAL THICKNESS. DEVIATIONS FROM THE NOMINAL THICKNESS WILL BE PERMITTED WHEN SUCH DEVIATIONS OCCUR DUE TO IRREGULARITIES IN THE EXISTING SURFACE OR BASE ON WHICH THE HMA IS PLACED.

THE HMA SURFACE OF ALL MAILBOX TURNOUTS, PRIVATE ENTRANCES, COMMERCIAL ENTRANCES, AND SIDE ROADS SHALL BE MADE NEATLY, IN A WORKMANLIKE MANNER, AND SHALL ACCURATELY CONFORM TO THE SHAPES AND DIMENSIONS SHOWN ON THE PLAN DETAILS. IF REQUIRED BY THE ENGINEER, THE CONTRACTOR SHALL SAW CUT THE HMA SURFACE TO CONFORM TO THE SHAPES AND DIMENSIONS SHOWN ON THE PLAN DETAILS. THIS WORK WILL BE INCLUDED IN THE COST OF THE HMA SURFACE.

THE ENGINEER WILL BE THE SOLE JUDGE CONCERNING CURING TIME FOR THE VARIOUS HMA LIFTS.

ON EXISTING PAVEMENT WHICH MAY BE SUPERELEVATED, THE NEW HMA PAVEMENT SHALL BE BUILT WITH THE SAME SUPERELEVATION UNLESS NEW SUPERELEVATION RATES ARE GIVEN ON THE PLANS.

ANY REFERENCE TO A STANDARD IN THESE PLANS SHALL BE INTERPRETED TO MEAN THE EDITION AS INDICATED BY THE SUBNUMBER SHOWN IN THE LIST OF STANDARDS OR THE COPY INCLUDED IN THESE PLANS.

THE FOLLOWING RATES OF APPLICATION HAVE BEEN USED IN CALCULATING PLAN QUANTITIES:

GRANULAR MATERIALS	2.05	TONS / CU YD
HMA RESURFACING	112	LBS / SQ YD / IN
SHORT TERM PAVEMENT MARKING	10	FT /100 FT OF APPLICATION
MIX FOR CRACKS, JTS & FLGWYS	0.0003	TONS / SQ YD
BINDER (HAND METHOD)	0.0005	M TONS / SQ M

ALL DAMAGE TO DEPARTMENT OWNED UNDERGROUND FACILITIES, CAUSED BY THE CONTRACTOR SHALL BE REPAIRED TO THE SATISFACTION OF THE DEPARTMENT AT THE CONTRACTOR'S EXPENSE. THIS SHALL INCLUDE ALL TEMPORARY REPAIRS REQUIRED TO KEEP THE FACILITY OPERATIONAL WHILE MATERIAL IS BEING OBTAINED TO MAKE PERMANENT REPAIRS. SPlicing OF ELECTRIC CABLE WILL NOT BE ALLOWED. ELECTRIC CABLE SHALL BE REPLACED FROM POLE TO POLE OR CONTROLLER.

MEMBERS OF JULIE KNOWN TO BE WITHIN THE LIMITS OF THE IMPROVEMENT ARE: AMEREN, EIEC, MCI/VERIZON, NICOR AND MEDIACOM

NON-MEMBERS OF JULIE KNOWN TO BE WITHIN THE LIMITS OF THE IMPROVEMENT ARE:

THE CONTRACTOR SHALL CONTACT JULIE AT LEAST 48 HOURS PRIOR TO EXCAVATION TO DETERMINE WHICH UTILITIES ARE IN THE AREA.

COMMITMENTS

HMA MIXTURE REQUIREMENT TABLE			
LOCATION(S):	ENTIRE PROJECT	ENTIRE PROJECT	ENTIRE PROJECT
MIXTURE USE(S):	HMA BINDER	HMA SURFACE	HMA INCIDENTAL
BINDER GRADE (PG):	PG 64-22	PG 64-22	PG 64-22
DESIGN AIR VOIDS:	4.0% @ N50	4.0% @ N50	4.0% @ N50
MIXTURE COMPOSITION:	IL 19.0	IL 9.5	IL 9.5
(MIXTURE GRADATION)			
FRICTION AGGREGATE:		MIXTURE C	
MIXTURE WEIGHT:	112.0 LB/SY/IN	112.0 LB/SY/IN	112.0 LB/SY/IN
QUALITY MANAGEMENT PROGRAM:	QCP	QCP	QCQA
SUBLOT SIZE:	1000 TONS	1000 TONS	N/A
DENSITY TEST METHOD:	CORES	CORES	SATISFACTION OF ENGINEER
MATERIAL TRANSFER DEVICE (REQUIRED?)	YES	YES	NO

STATE OF ILLINOIS
DEPARTMENT OF TRANSPORTATION
DISTRICT THREE
AS BUILT INFORMATION

STATE OF ILLINOIS
DEPARTMENT OF TRANSPORTATION
DISTRICT THREE

SUPERVISING CONSTRUCTION FIELD ENGINEER

PREPARED BY: _____
DISTRICT STUDIES & PLANS ENGINEER

RESIDENT ENGINEER / TECHNICIAN

DATE: _____

START & END DATES
OF CONSTRUCTION: _____

EXAMINED BY: _____
DISTRICT CONSTRUCTION ENGINEER

INSPECTORS: _____

DISTRICT MATERIALS ENGINEER

DISTRICT OPERATIONS ENGINEER

FILE NAME =	USER NAME = NOLASCOCJ	DESIGNED -	REVISED -
p:\dot-pw.bentley.com\PWIDOT\Documents\DOT Offices\District 3\Projects\0366060\CAD\DRAWING\0366060-shr-cover.dgn		CHECKED -	REVISED -
Default	PLOT DATE = 2/7/2022	DATE -	REVISED -

STATE OF ILLINOIS
DEPARTMENT OF TRANSPORTATION

GENERAL NOTES

SCALE: SHEET OF SHEETS STA. TO STA.

F.A.S. RTE.	SECTION	COUNTY	TOTAL SHEETS	SHEET NO.
315	(121,122)RS-3	IROQUOIS	33	2
ILLINOIS FED. AID PROJECT			CONTRACT NO. 66D60	

CODE NO.	ITEM	UNIT	TOTAL QUANTITY	CONSTR. CODE	
				80% FED 20% STATE	
				FUND CODE	STP
				ROADWAY	
				0005	
				RURAL	
20200100	EARTH EXCAVATION	CU YD	5		5
20300100	CHANNEL EXCAVATION	CU YD	105		105
20400800	FURNISHED EXCAVATION	CU YD	125		125
20800150	TRENCH BACKFILL	CU YD	45		45
21400100	GRADING AND SHAPING DITCHES	FOOT	1115		1115
25000210	SEEDING, CLASS 2A	ACRE	0.75		0.75
25000400	NITROGEN FERTILIZER NUTRIENT	POUND	68		68
25000500	PHOSPHORUS FERTILIZER NUTRIENT	POUND	68		68
25000600	POTASSIUM FERTILIZER NUTRIENT	POUND	68		68
25100630	EROSION CONTROL BLANKET	SQ YD	3332		3332
28100105	STONE RIPRAP, CLASS A3	SQ YD	172		172
28100107	STONE RIPRAP, CLASS A4	SQ YD	4		4
28200200	FILTER FABRIC	SQ YD	176		176
40200900	AGGREGATE SURFACE COURSE, TYPE B	CU YD	5		5

MODEL: Default
 FILE NAME: p:\ultra-cw-bee\paw.com\PIV\DOT\Documents\DOT Office\Dir\dir: 3\Project\10366960\CAD\DATA\B366D60-ht-500.dgn

USER NAME = NOLASCOCJ	DESIGNED -	REVISED -
	DRAWN -	REVISED -
PLOT SCALE = 100,0000 ' / in.	CHECKED -	REVISED -
PLOT DATE = 2/7/2022	DATE -	REVISED -

**STATE OF ILLINOIS
DEPARTMENT OF TRANSPORTATION**

SUMMARY OF QUANTITIES

SCALE: SHEET OF SHEETS STA. TO STA.

F.A.S. RTE.	SECTION	COUNTY	TOTAL SHEETS	SHEET NO.
315	(121,122)RS-3	IROQUOIS	33	3
ILLINOIS FED. AID PROJECT			CONTRACT NO. 66D60	

MODEL: Default
 FILE NAME: p:\ultra-pw-bentley.com\PIV\DOT\Documents\DOT Office\Dir\dir: 3\Project\366696\CAD\DATA\366696-INT-500.dgn

CODE NO.	ITEM	UNIT	TOTAL QUANTITY	CONSTR. CODE	
				80% FED 20% STATE	
				FUND CODE	STP
				ROADWAY	
				0005	RURAL
40600290	BITUMINOUS MATERIALS (TACK COAT)	POUND	83513	83513	
40600370	LONGITUDINAL JOINT SEALANT	FOOT	44993	44993	
40600400	MIXTURE FOR CRACKS, JOINTS, AND FLANGWAYS	TON	37.1	37.1	
40600900	HOT-MIX ASPHALT BINDER COURSE (HAND METHOD), N50	TON	61.3	61.3	
40600982	HOT-MIX ASPHALT SURFACE REMOVAL - BUTT JOINT	SQ YD	362	362	
40600990	TEMPORARY RAMP	SQ YD	706	706	
40603080	HOT-MIX ASPHALT BINDER COURSE, 1L-19.0, N50	TON	14834	14834	
40604050	HOT-MIX ASPHALT SURFACE COURSE, 1L-9.5, MIX "C", N50	TON	10163	10163	
40800050	INCIDENTAL HOT-MIX ASPHALT SURFACING	TON	620	620	
42000060	WELDED WIRE REINFORCEMENT	SQ YD	1031	1031	
42400100	PORTLAND CEMENT CONCRETE SIDEWALK 4 INCH	SQ FT	512	512	
* 42400800	DETECTABLE WARNINGS	SQ FT	100	100	
44000100	PAVEMENT REMOVAL	SQ YD	55	55	
44000164	HOT-MIX ASPHALT SURFACE REMOVAL, 3 3/4"	SQ YD	117737	117737	

*= SPECIALTY ITEM

USER NAME = NOLASCOCJ	DESIGNED -	REVISED -	STATE OF ILLINOIS DEPARTMENT OF TRANSPORTATION	SUMMARY OF QUANTITIES				F.A.S. RTE.	SECTION	COUNTY	TOTAL SHEETS	SHEET NO.		
PLOT SCALE = 100,0000' / in.	DRAWN -	REVISED -		SCALE:	SHEET	OF	SHEETS	STA.	TO STA.	315	(121,122)RS-3	IROQUOIS	33	4
PLOT DATE = 2/7/2022	CHECKED -	REVISED -		CONTRACT NO. 66D60										
	DATE -	REVISED -		ILLINOIS FED. AID PROJECT										

CODE NO.	ITEM	UNIT	TOTAL QUANTITY	CONSTR. CODE	
				80% FED 20% STATE	
				FUND CODE	
				ROADWAY	STP
				0005	RURAL
44000600	SIDEWALK REMOVAL	SQ FT	299	299	
44200976	CLASS B PATCHES, TYPE IV, 10 INCH	SQ YD	974	974	
44200998	CLASS B PATCHES, TYPE III, 12 INCH	SQ YD	69	69	
44201299	DOWEL BARS 1 1/2"	EACH	630	630	
44213200	SAW CUTS	FOOT	1034	1034	
48102100	AGGREGATE WEDGE SHOULDER, TYPE B	TON	1499	1499	
50105220	PIPE CULVERT REMOVAL	FOOT	126	126	
542A5473	PIPE CULVERTS, CLASS A, TYPE 1 EQUIVALENT ROUND-SIZE 18"	FOOT	160	160	
54213663	PRECAST REINFORCED CONCRETE FLARED END SECTIONS 18"	EACH	8	8	
54390160	INSERTION CULVERT LINER 21"	FOOT	42	42	
60605000	COMBINATION CONCRETE CURB AND GUTTER, TYPE B-6.24	FOOT	238	238	
60905305	BOX CULVERTS TO BE CLEANED	FOOT	396	396	
60920018	PIPE CULVERTS TO BE CLEANED 18"	FOOT	174	174	
63500105	DELINEATORS	EACH	26	26	

MODEL: Default
 FILE NAME: p:\ultra-cw-bentley.com\PIV\DOT\Documents\DOT Office\Dir\dir: 3\Project\10366960\CAD\DATA\B366D60-ht-500.dgn

USER NAME = NOLASCOCJ	DESIGNED -	REVISED -
	DRAWN -	REVISED -
PLOT SCALE = 100,0000 ' / in.	CHECKED -	REVISED -
PLOT DATE = 2/7/2022	DATE -	REVISED -

**STATE OF ILLINOIS
DEPARTMENT OF TRANSPORTATION**

SUMMARY OF QUANTITIES

SCALE: SHEET OF SHEETS STA. TO STA.

F.A.S. RTE.	SECTION	COUNTY	TOTAL SHEETS	SHEET NO.
315	(121,122)RS-3	IROQUOIS	33	5
			CONTRACT NO. 66D60	
ILLINOIS			FED. AID PROJECT	

MODEL: Default
 FILE NAME: p:\ultra-pw-beaufay.com\FW\DOT\Documents\DOT Office\Dir\dir: 3\Project\366960\CAD\DATA\366960-INT-500.dgn

CODE NO.	ITEM	UNIT	TOTAL QUANTITY	CONSTR. CODE	
				80% FED 20% STATE	
				FUND CODE	STP
				ROADWAY	
* 66900200	NON-SPECIAL WASTE DISPOSAL	CU YD	300		300
67000400	ENGINEER'S FIELD OFFICE, TYPE A	CAL MO	4		4
* 66900530	SOIL DISPOSAL ANALYSIS	EACH	3		3
67100100	MOBILIZATION	L SUM	1		1
* 66901001	REGULATED SUBSTANCES PRE-CONSTRUCTION PLAN	L SUM	1		1
70100450	TRAFFIC CONTROL AND PROTECTION, STANDARD 701201	L SUM	1		1
* 66901003	REGULATED SUBSTANCES FINAL CONSTRUCTION REPORT	L SUM	1		1
70100460	TRAFFIC CONTROL AND PROTECTION, STANDARD 701306	L SUM	1		1
* 66901006	REGULATED SUBSTANCES MONITORING	CAL DA	4		4
70300100	SHORT TERM PAVEMENT MARKING	FOOT	4032		4032
70102640	TRAFFIC CONTROL AND PROTECTION, STANDARD 701801	L SUM	1		1
70300150	SHORT TERM PAVEMENT MARKING REMOVAL	SQ FT	1341		1341
* 78000100	THERMOPLASTIC PAVEMENT MARKING - LETTERS AND SYMBOLS	SQ FT	62		62
* 78000200	THERMOPLASTIC PAVEMENT MARKING - LINE 4"	FOOT	4238		4238
* 78000400	THERMOPLASTIC PAVEMENT MARKING - LINE 6"	FOOT	40		40
* 78000500	THERMOPLASTIC PAVEMENT MARKING - LINE 8"	FOOT	397		397
* 78000600	THERMOPLASTIC PAVEMENT MARKING - LINE 12"	FOOT	538		538
* 78001110	PAINT PAVEMENT MARKING - LINE 4"	FOOT	182662		182662
* 78001130	PAINT PAVEMENT MARKING - LINE 6"	FOOT	17142		17142
* 78003181	PREFORMED PLASTIC PAVEMENT MARKING, TYPE B - STANDARD - LINE 24"	FOOT	80		80

*= SPECIALTY ITEM

USER NAME = NOLASCOCJ	DESIGNED -	REVISED -	STATE OF ILLINOIS DEPARTMENT OF TRANSPORTATION	SUMMARY OF QUANTITIES				F.A.S. RTE.	SECTION	COUNTY	TOTAL SHEETS	SHEET NO.	
PLOT SCALE = 100,0000' / in.	DRAWN -	REVISED -		SCALE:	SHEET	OF	SHEETS	STA.	TO STA.	(121,122)RS-3	IROQUOIS	33	6
PLOT DATE = 2/7/2022	CHECKED -	REVISED -		CONTRACT NO. 66D60									
	DATE -	REVISED -		ILLINOIS FED. AID PROJECT									

MODEL: Default
 FILE NAME: p:\ultra-pw-bea\paw.com\PIV\DOT\Documents\DOT Office\Dir\dir: 3\Project\10366960\CAD\DATA\B366D60-ht-500.dgn

CODE NO.	ITEM	UNIT	TOTAL QUANTITY	CONSTR. CODE	
				80% FED 20% STATE	
				FUND CODE	STP
				ROADWAY	RURAL
* 78011000	GROOVING FOR RECESSED PAVEMENT MARKING, LETTERS AND SYM	SQ FT	62		62
* 78011025	GROOVING FOR RECESSED PAVEMENT MARKING 5"	FOOT	4238		4238
* 78011035	GROOVING FOR RECESSED PAVEMENT MARKING 7"	FOOT	40		40
* 78011045	GROOVING FOR RECESSED PAVEMENT MARKING 9"	FOOT	397		397
* 78011065	GROOVING FOR RECESSED PAVEMENT MARKING 13"	FOOT	538		538
* 78011125	GROOVING FOR RECESSED PAVEMENT MARKING 25"	FOOT	80		80
* 78100100	RAISED REFLECTIVE PAVEMENT MARKER	EACH	611		611
* 78200020	CURB REFLECTORS	EACH	13		13
	78300200	RAISED REFLECTIVE PAVEMENT MARKER REMOVAL	EACH	611	611
	X0100025	FLOWABLE FILL	CU YD	1	1
	X0320050	CONSTRUCTION LAYOUT (SPECIAL)	L SUM	1	1
	X0326649	LINEAR DELINEATOR PANELS, 6 INCH	EACH	8	8
	X0327809	LINEAR DELINEATOR PANELS, 4 INCH	EACH	43	43
	X4401198	HOT-MIX ASPHALT SURFACE REMOVAL, VARIABLE DEPTH	SQ YD	6965	6965

*= SPECIALTY ITEM

USER NAME = NOLASCOCJ	DESIGNED -	REVISED -	STATE OF ILLINOIS DEPARTMENT OF TRANSPORTATION	SUMMARY OF QUANTITIES				F.A.S. RTE.	SECTION	COUNTY	TOTAL SHEETS	SHEET NO.
PLOT SCALE = 100,0000 ' / in.	DRAWN -	REVISED -						315	(121,122)RS-3	IROQUOIS	33	7
PLOT DATE = 2/8/2022	CHECKED -	REVISED -		SCALE: SHEET OF SHEETS STA. TO STA.				CONTRACT NO. 66D60				
	DATE -	REVISED -		ILLINOIS FED. AID PROJECT								

MODEL: Default
 FILE NAME: p:\ultra-cw-beadley.com\PIV\DOT\Documents\DOT Office\Dir\dir: 3\Project\10366960\CAD\DATA\B\66D60-INT-500.dwg

CODE NO.	ITEM	UNIT	TOTAL QUANTITY	CONSTR. CODE	
				80% FED 20% STATE	FUND CODE STP
				ROADWAY	
				0005	
				RURAL	
X5010523	REMOVE CONCRETE END SECTION	EACH	6	6	
X5537800	STORM SEWERS TO BE CLEANED 12"	FOOT	52	52	
Z0010615	CLEANING EXISTING INLETS	EACH	2	2	
Z0029300	GROUT REPAIR	FOOT	5	5	
Z0030850	TEMPORARY INFORMATION SIGNING	SQ FT	42	42	
Z0034105	MATERIAL TRANSFER DEVICE	TON	24997	24997	
Z0048665	RAILROAD PROTECTIVE LIABILITY INSURANCE	L SUM	1	1	

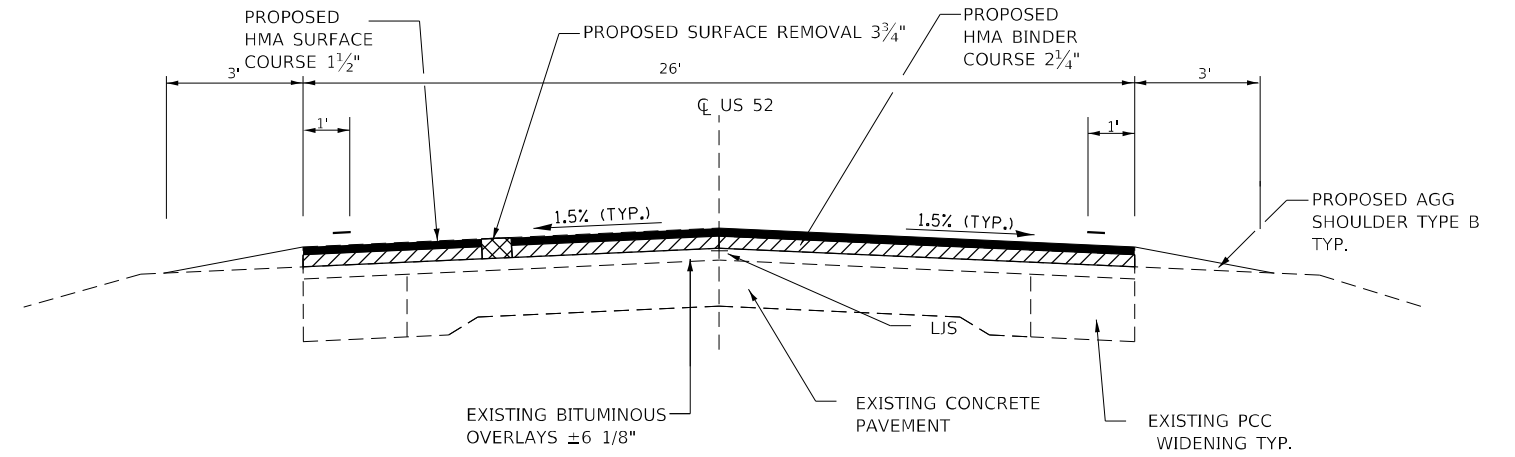
USER NAME = NOLASCOCJ	DESIGNED -	REVISED -
	DRAWN -	REVISED -
PLOT SCALE = 100,0000 ' / in.	CHECKED -	REVISED -
PLOT DATE = 2/8/2022	DATE -	REVISED -

**STATE OF ILLINOIS
DEPARTMENT OF TRANSPORTATION**

SUMMARY OF QUANTITIES

SCALE: SHEET OF SHEETS STA. TO STA.

F.A.S. RTE.	SECTION	COUNTY	TOTAL SHEETS	SHEET NO.
315	(121,122)RS-3	IROQUOIS	33	8
			CONTRACT NO. 66D60	
		ILLINOIS FED. AID PROJECT		

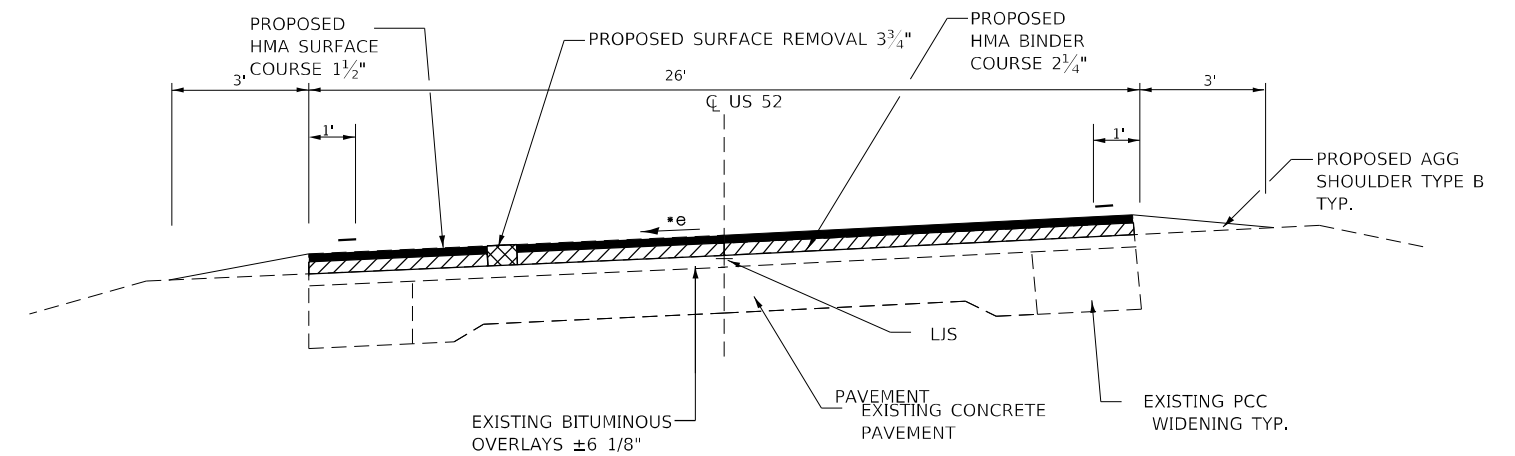


TYPICAL SECTION 1

STA 48+00 TO STA 238+80
 STA 267+05 TO STA 285+94
 STA 298+20 TO STA 316+20
 STA 326+00 TO STA 430+09.16

STATION EQUATIONS

STA 77+00.00 BK = STA 77+06.65 AH
 STA 105+94.32 BK = STA 106+00.00 AH
 STA 150+79.22 BK = STA 151+00.00 AH
 STA 161+00.00 BK = STA 160+89.77 AH
 STA 213+00.00 BK = STA 213+10.81 AH
 STA 274+48.81 BK = STA 274+56.20 AH
 STA 358+37.21 BK = STA 358+00.00 AH



TYPICAL SECTION 2

STA 238+80 TO STA 267+05
 STA 285+94 TO STA 298+20
 STA 316+20 TO STA 326+00
 *e- MATCH EXISTING

STATION EQUATIONS

STA 251+65.71 BK = STA 253+08.55 AH
 STA 256+66.43 BK = STA 256+58.17 AH
 STA 263+71.43 BK = STA 265+70.37 AH
 STA 323+ 34.10 BK = STA 323+79.25 AH

MODEL: Default
 FILE: \\na11e2-pw-bentley.com\pl\id\DOT\Documents\1\DOT Office\Dir\dir: 3\Project\1\366660\CADD\366660-INT-CY\sec1.dgn

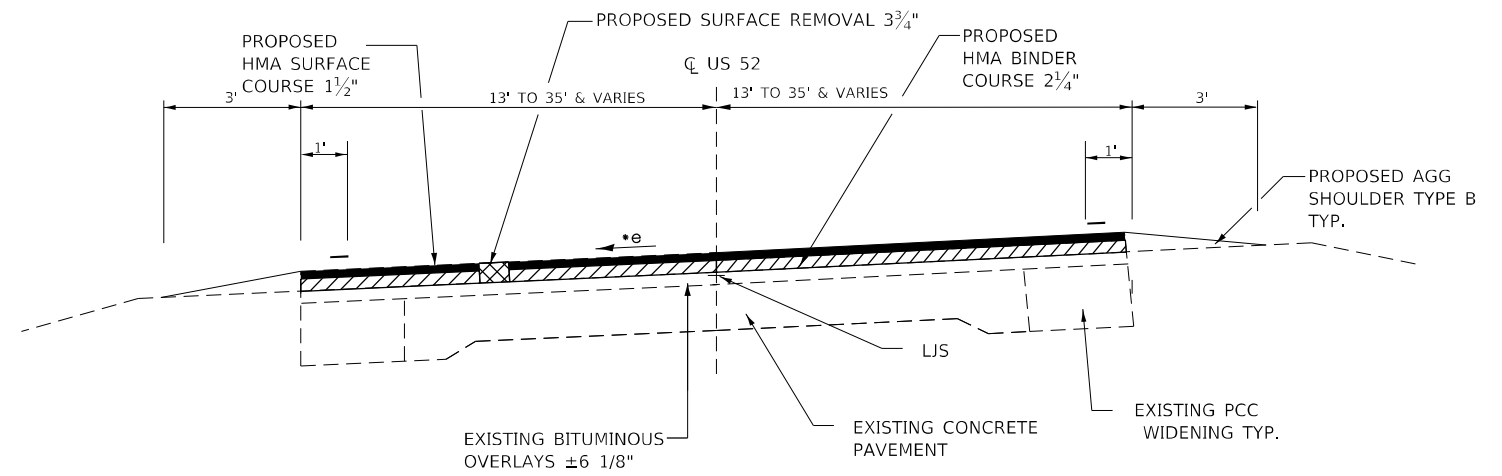
USER NAME = NOLASCOCJ	DESIGNED -	REVISED -
	DRAWN -	REVISED -
PLOT SCALE = 100,0000' / in.	CHECKED -	REVISED -
PLOT DATE = 2/7/2022	DATE -	REVISED -

**STATE OF ILLINOIS
 DEPARTMENT OF TRANSPORTATION**

TYPICAL SECTIONS

SCALE: SHEET OF SHEETS STA. TO STA.

F.A.S. RTE.	SECTION	COUNTY	TOTAL SHEETS	SHEET NO.
315	(121,122)RS-3	IROQUOIS	33	9
CONTRACT NO. 66D60				
ILLINOIS FED. AID PROJECT				



TYPICAL SECTION 3

STA 33+12.17 TO STA 6+17

*e- MATCH EXISTING

STATION EQUATIONS

STA 430+09.16 BK = STA 33+12.17 AH

MODEL: Default
 FILE: \\nlfpc-pw-beadley.com\PW\DOT\Documents\DOT Office\Dir\rdt_3\Project\10366960\CAD\DATA\B366D60-CHT-TYPICAL.dgn

USER NAME = NOLASCOCJ	DESIGNED -	REVISED -
	DRAWN -	REVISED -
PLOT SCALE = 100,0000 ' / in.	CHECKED -	REVISED -
PLOT DATE = 2/7/2022	DATE -	REVISED -

**STATE OF ILLINOIS
DEPARTMENT OF TRANSPORTATION**

TYPICAL SECTIONS

SCALE: SHEET OF SHEETS STA. TO STA.

F.A.S. RTE.	SECTION	COUNTY	TOTAL SHEETS	SHEET NO.
315	(121,122)RS-3	IROQUOIS	33	10
CONTRACT NO. 66D60				
ILLINOIS FED. AID PROJECT				

MODEL: Default
 FILE NAME: p:\ultra-cw-bentley.com\PIV\DOT\Documents\DOT Office\Dir\dir: 3\Project\0366960\CAD\DATA\0366960-ct-PS4_half & line.dwg
 PLOT DATE = 2/7/2022

EXIST. CURVE EXCL_US52N_25
 PI STA. = 165+89.77
 $\Delta = 5^\circ 53' 24''$ (LT)
 $D = 0^\circ 35' 22''$
 $R = 9,719.12'$
 $T = 500.00'$
 $L = 999.12'$
 $E = 12.85'$
 $e = \underline{\hspace{1cm}}$
 $T.R. = \underline{\hspace{1cm}}$
 S.E. RUN =
 P.C. STA. = 160+89.77
 P.T. STA. = 170+88.89

EXIST. CURVE EXCL_US52N_34
 PI STA. = 246+60.00
 $\Delta = 64^\circ 54' 27''$ (LT)
 $D = 5^\circ 37' 47''$
 $R = 1,017.71'$
 $T = 647.20'$
 $L = 1,152.92'$
 $E = 188.36'$
 $e = \underline{\hspace{1cm}}$
 $T.R. = \underline{\hspace{1cm}}$
 S.E. RUN =
 P.C. STA. = 240+12.80
 P.T. STA. = 251+65.71

EXIST. CURVE EXCL_US52N_37
 PI STA. = 261+13.00
 $\Delta = 90^\circ 15' 42''$ (RT)
 $D = 12^\circ 39' 17''$
 $R = 452.76'$
 $T = 454.83'$
 $L = 713.26'$
 $E = 189.01'$
 $e = \underline{\hspace{1cm}}$
 $T.R. = \underline{\hspace{1cm}}$
 S.E. RUN =
 P.C. STA. = 256+58.17
 P.T. STA. = 263+71.43

EXIST. CURVE EXCL_US52N_44
 PI STA. = 291+61.63
 $\Delta = 26^\circ 15' 51''$ (LT)
 $D = 2^\circ 39' 26''$
 $R = 2,156.18'$
 $T = 503.03'$
 $L = 988.38'$
 $E = 57.90'$
 $e = \underline{\hspace{1cm}}$
 $T.R. = \underline{\hspace{1cm}}$
 S.E. RUN =
 P.C. STA. = 286+58.60
 P.T. STA. = 296+46.98

EXIST. CURVE EXCL_US52N_49
 PI STA. = 320+11.26
 $\Delta = 12^\circ 50' 33''$ (RT)
 $D = 1^\circ 58' 50''$
 $R = 2,892.81'$
 $T = 325.57'$
 $L = 648.41'$
 $E = 18.26'$
 $e = \underline{\hspace{1cm}}$
 $T.R. = \underline{\hspace{1cm}}$
 S.E. RUN =
 P.C. STA. = 316+85.69
 P.T. STA. = 323+34.10

EXIST. CURVE EXCL_US52S_11
 PI STA. = 23+11.32
 $\Delta = 12^\circ 06' 00''$ (RT)
 $D = 2^\circ 00' 00''$
 $R = 2,864.79'$
 $T = 303.63'$
 $L = 605.00'$
 $E = 16.05'$
 $e = \underline{\hspace{1cm}}$
 $T.R. = \underline{\hspace{1cm}}$
 S.E. RUN =
 P.C. STA. = 20+07.70
 P.T. STA. = 26+12.70

EXIST. CURVE EXCL_US52S_8
 PI STA. = 12+81.11
 $\Delta = 14^\circ 00' 00''$ (LT)
 $D = 1^\circ 30' 00''$
 $R = 3,819.71'$
 $T = 469.00'$
 $L = 933.33'$
 $E = 28.69'$
 $e = \underline{\hspace{1cm}}$
 $T.R. = \underline{\hspace{1cm}}$
 S.E. RUN =
 P.C. STA. = 8+12.10
 P.T. STA. = 17+45.44

EXIST. CURVE EXCL_US52S_3
 PI STA. = 1+99.99
 $\Delta = 10^\circ 19' 00''$ (LT)
 $D = 5^\circ 00' 00''$
 $R = 1,145.92'$
 $T = 103.45'$
 $L = 206.33'$
 $E = 4.66'$
 $e = \underline{\hspace{1cm}}$
 $T.R. = \underline{\hspace{1cm}}$
 S.E. RUN =
 P.C. STA. = 0+96.54
 P.T. STA. = 3+02.87

USER NAME = NOLASCOCJ	DESIGNED -	REVISED -
	DRAWN -	REVISED -
PLOT SCALE = 100,0000 ' / in.	CHECKED -	REVISED -
PLOT DATE = 2/7/2022	DATE -	REVISED -

**STATE OF ILLINOIS
 DEPARTMENT OF TRANSPORTATION**

EXISTING CURVE DATA

SCALE: SHEET OF SHEETS STA. TO STA.

F.A.S. RTE.	SECTION	COUNTY	TOTAL SHEETS	SHEET NO.
315	(121,122)RS-3	IROQUOIS	33	11
CONTRACT NO. 66D60			ILLINOIS FED. AID PROJECT	

MONUMENT NUMBER	DESCRIPTION	EXISTING MONUMENT TYPE	PROPOSED MONUMENT TYPE	MONUMENT RECORD TO BE RECORDED	RESPONSIBILITY
N/A	NO CENTERLINE CONTROL OR LAND SURVEY	N/A	N/A	N/A	N/A
	PERMANENT SURVEY MARKERS TO BE SET ON THIS JOB				

ONLY THE ORIGINAL SCOPE OF THIS JOB HAS BEEN SEARCHED FOR MONUMENTS. R.E. MUST INFORM PLATS AND PLANS TO SEARCH FOR ADDITIONAL MONUMENTS PRIOR TO MILLING IF ADDENDUMS HAVE BEEN ADDED.

NO KNOWN LAND SURVEY OR CENTERLINE CONTROL MONUMENTS ARE ON THE ROAD SURFACE THAT WILL BE DISTURBED BY THE RESURFACING.

UNKNOWN MONUMENTS MAY EXIST. IF AN UNLISTED MONUMENT IS FOUND, R.E. IS REQUIRED TO PROTECT THE MONUMENT FROM DAMAGE UNTIL A PLATS AND PLANS LAND SURVEYOR CAN DOCUMENT THE MONUMENT. PLATS AND PLANS WILL RESET SUCH MONUMENTS IN KIND FOLLOWING CONSTRUCTION.

NO MONUMENT RECORDS ARE REQUIRED FOR THIS JOB.

MODEL: Default
 FILE NAME: p:\ultra-cw-beach\p\p\DOT Documents\DOT Office\Dir\dir: 3\Project\366666\CAD\DATA\366666\ch-PSM.tbl & line diagram.dgn

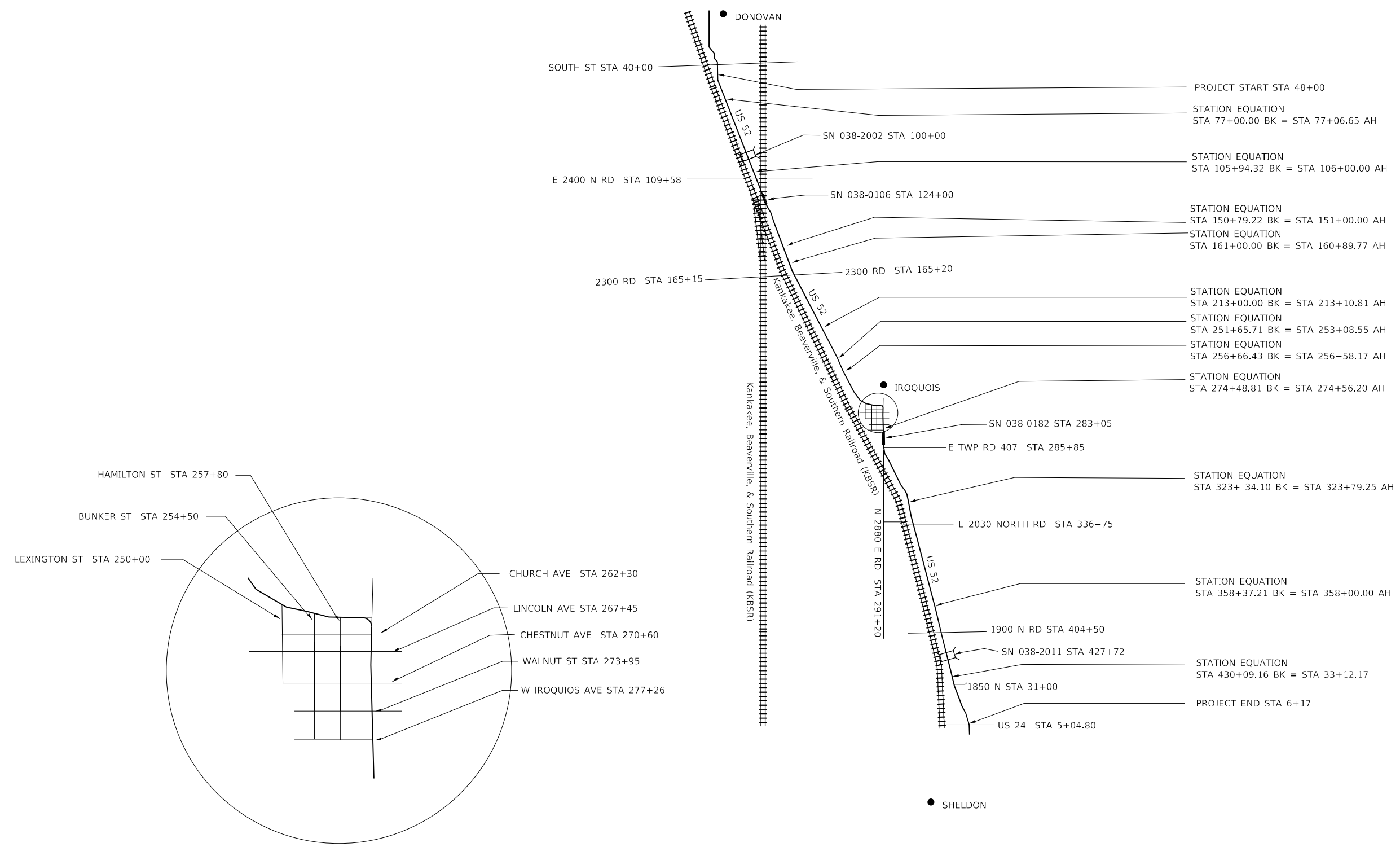
USER NAME = NOLASCOCJ	DESIGNED -	REVISED -
	DRAWN -	REVISED -
PLOT SCALE = 100,0000 ' / in.	CHECKED -	REVISED -
PLOT DATE = 2/7/2022	DATE -	REVISED -

**STATE OF ILLINOIS
DEPARTMENT OF TRANSPORTATION**

PERMANENT SURVEY MARKER TABLE

SCALE: SHEET OF SHEETS STA. TO STA.

F.A.S. RTE.	SECTION	COUNTY	TOTAL SHEETS	SHEET NO.
315	(121,122)RS-3	IROQUOIS	33	12
CONTRACT NO. 66D60			ILLINOIS FED. AID PROJECT	



MODEL: Default
 FILE: h:\m\p\p\ulldet-pw-beaverville.com\p\ulldet\Documents\DOT Office\Drawings\3\Project\10366960\CADD\DATA\0366960-01-054.tbl & line diagram.dgn

USER NAME = NOLASCOCJ	DESIGNED -	REVISED -
	DRAWN -	REVISED -
PLOT SCALE = 100,0000' / in.	CHECKED -	REVISED -
PLOT DATE = 2/7/2022	DATE -	REVISED -

STATE OF ILLINOIS
DEPARTMENT OF TRANSPORTATION

LINE DIAGRAM				
SCALE:	SHEET	OF	SHEETS	STA. TO STA.

F.A.S. RTE.	SECTION	COUNTY	TOTAL SHEETS	SHEET NO.
315	(121,122)RS-3	IROQUOIS	33	13
CONTRACT NO. 66D60				
ILLINOIS FED. AID PROJECT				

MAINLINE SCHEDULE																			
LOCATION			LENGTH	WIDTH	RESURF AREA	HMA SURF REM-BUTT JT	HMA SURF REM VARIABLE DEPTH	HMA SURF REM 3.75"	HMA SURF CSE, IL 9.5 MIX C, N50 1.5"	HMA BIND CSE IL-19.0, N50 2.25"	MATL TRANS DEVICE	BIT MATL (TACK COAT)	MIXTURE CRACKS JTS & FLANGEWYS	HMA BINDER CSE (HM) N50	LONG JOINT SEAL	TEMP RAMP	AGG WEDGE SHLD TY B		
STATION			FOOT	FOOT	SQ FT	SQ YD	SQ YD	SQ YD	TON	TON	TON	POUND	TON	TON	FOOT	SQ YD	TON		
RURAL																			
STA	48+00.00	TO STA	71+00.00	BK	2300	26	59800		6644	558	837	1395	4485	2.0	3.3	2300	36	87	
STA	77+06.65	AH TO STA	97+70.00		2063	26	53638		5950	501	751	1252	4023	1.8	3.0	2063		78	
STA	97+70.00	TO STA	101+75.00		405	26	10530			98	10530	98	790	0.4	0.6	405		15	
STA	101+75.00	TO STA	105+94.32	BK	419	26	10894			1210	102	254	817	0.4	0.6	419		16	
STA	106+00.00	AH TO STA	123+08.00		1708	26	44408		4934	414	622	1036	3331	1.5	2.5	1708		65	
STA	123+08.00	TO STA	125+25.00		217	26	5642			53	627	53	423	0.2	0.3	217		8	
STA	125+25.00	TO STA	150+79.22	BK	2554	26	66404			7378	620	930	1550	2.2	3.7	2554		97	
STA	151+00.00	AH TO STA	161+00.00	BK	1000	26	26000		2889	243	364	607	1950	0.9	1.4	1000		38	
STA	160+89.77	AH TO STA	213+00.00	BK	5210	26	135460		15051	1264	1896	3160	10160	4.5	7.5	5210		197	
STA	213+10.81	AH TO STA	238+80.00		2569	26	66794		7422	623	935	1558	5010	2.2	3.7	2569		97	
STA	238+80.00	TO STA	251+65.71	BK	1286	26	33436		3715	312	468	780	2508	1.1	1.9	1286		49	
STA	253+08.55	AH TO STA	256+66.43	BK	358	26	9308		1034	87	130	217	698	0.3		358		14	
STA	256+58.17	AH TO STA	263+71.43	BK	713	26	18538		2050	173	260	433	1390	0.6	1.0	713		27	
STA	265+70.37	AH TO STA	267+05.00		135	26	3510		390	33	49	82	263	0.1	0.2	135		5	
STA	267+05.00	TO STA	274+48.81	BK	744	26	19344		2149	181	271	452	1451	0.6	1.1	744		28	
STA	274+56.20	AH TO STA	279+56.00		500	26	13000		1444	121	102	303	975	0.4	0.7	500		19	
STA	279+56.00	TO STA	280+46.00		90	26	2340			22	22	176	176	0.1	0.1	90		3	
STA	280+46.00	TO STA	281+46.00		100	26	2600			24	24	195	195	0.1	0.1	100	14	4	
STA	281+46.00	TO STA	284+64.00		318														
BRIDGE OMISSION SN 038-0182 STA 283+05																			
STA	284+64.00	TO STA	285+94.00		130	26	3380			376		32	254	0.1	0.2	130	14	5	
STA	285+94.00	TO STA	286+54.00		60	26	1560			173		15	117	0.1	0.1	60		2	
STA	286+54.00	TO STA	298+20.00		1166	26	30316			3358	283	424	707	1.0	1.7	1166		44	
STA	298+20.00	TO STA	306+35.00		815	26	21190			2354	198	297	495	0.7	1.2	815		31	
STA	306+35.00	TO STA	307+05.00		70	26	1820	202			17	137	137	0.5	0.9	70		3	
STA	307+05.00	TO STA	316+20.00		915	26	23790			2643	222	333	555	0.8	1.3	915		35	
STA	316+20.00	TO STA	323+34.10	BK	714	26	18564			2053	173	260	433	0.6	1.0	714		27	
STA	323+34.10	AH TO STA	326+00.00		221	26	5746			638	54	80	134	0.2	0.3	221		8	
STA	326+00.00	TO STA	358+37.21	BK	3237	26	84162			9351	785	1178	1963	2.8	4.7	3237		122	
STA	358+00.00	AH TO STA	430+09.16	BK	7209	26	187434			20826	1749	2624	4373	6.2	10.4	7209		273	
STA	33+12.17	AH TO STA	7+15.00		2597	48	124656			13851	1163	1745	2908	4.2	6.9	7791		98	
STA	7+15.00	TO STA	6+85.00		30	48	1440	160			13	13	108	0.4	0.7	90		1	
STA	6+85.00	TO STA	6+17.00		68	48	3264				363	30	245	0.1	0.2	204	67	3	
TOTAL								362	2895	117737	10163	14834	24997	81675	37.1	61.3	44993	131	1499

STA 430+09.16 BK = 33+12.17 - NEW STATIONING (STATIONS DECREASING SOUTH)

SIDE ROAD SCHEDULE										
LOCATION			LENGTH	WIDTH	RESURF AREA	HMA SURF REMOVAL VARIABLE DEPTH	BIT MATL (TACK COAT)	INCIDENTAL HMA SURFACING	TEMP RAMP	FURNISHED EXCAVATION
ROAD NAME	SIDE	STATION	FT	FT	SQ FT	SQ YD	POUND	TON	SQ YD	CU YD
RURAL										
E 2400 NORTH RD	LT	109+58.00	20	40	800	89	40	14	22	0.8
E 2400 NORTH RD	RT	109+58.00	20	40	800	89	40	14	22	0.8
E 2300 NORTH RD	LT	165+20.00	20	40	800	89	40	14	22	0.8
E 2300 NORTH RD	RT	165+15.00	20	40	800	89	40	14	22	0.8
LEXINGTON ST.	RT	250+00.00	30	45	1350	150	68	23	25	1.3
BUNKER ST	RT	254+50.00	30	40	1200	133	60	20	22	1.3
GREELY ST	LT	257+75.00	30	49	1470	163	74	25	27	1.3
HAMILTON ST	RT	257+80.00	30	38	1140	127	57	19	21	1.3
MAIN ST	LT	262+00.00	30	48	1440	160	72	25	27	1.3
CHURCH AVE	RT	262+30.00	33	33	1089	121	54	19	18	1.5
LINCOLN AVE	RT	267+45.00	30	50	1500	167	75	26	28	1.3
LINCOLN AVE	LT	267+55.00	30	39	1170	130	59	20	22	1.3
CHESTNUT AVE	LT	270+66.00	30	39	1170	130	59	20	22	1.3
CHESTNUT AVE	RT	270+60.00	30	38	1140	127	57	19	21	1.3
WALNUT ST	LT	273+95.00	30	33	990	110	50	17	18	1.3
WALNUT ST	RT	273+95.00	30	60	1800	200	90	31	33	1.3
W IROQUOIS AVE	RT	277+26.00	30	34	1020	113	51	17	19	1.3
E TWP RD 407	LT	285+85.00	30	40	1200	133	60	20	22	1.3
N 2880 EAST RD	RT	291+20.00	40	108	4320	480	216	74	60	1.8
E2030 NORTH RD	LT	336+90.00	30	38	1140	127	57	19	21	1.3
E2030 NORTH RD	RT	336+75.00	30	38	1140	127	57	19	21	1.3
COUNTY RD 1900 N	LT	404+60.00	40	35	1400	156	70	24	19	1.8
COUNTY RD 1900 N	RT	404+50.00	30	39	1170	130	59	20	22	1.3
1850 N	LT	31+00.00	20	35	700	78	35	12	19	0.8
TOTAL							3418	1540	575	30

MOEEL Defaul
FILE NAME: p:\uldest-pw-bentley.com\FW\DOT\Documents\DOT Office\Dir\Dir: 3\Project\366960\CD\DATA\366960-01-01-01-01.dwg

USER NAME = NOLASCOCJ	DESIGNED -	REVISED -
	DRAWN -	REVISED -
PLOT SCALE = 100,0000 ' / in.	CHECKED -	REVISED -
PLOT DATE = 2/7/2022	DATE -	REVISED -

**STATE OF ILLINOIS
DEPARTMENT OF TRANSPORTATION**

SCHEDULE OF QUANTITIES

SCALE: SHEET OF SHEETS STA. TO STA.

F.A.S. RTE.	SECTION	COUNTY	TOTAL SHEETS	SHEET NO.
315	(121,122)R5-3	IROQUOIS	33	14
CONTRACT NO. 66D60				
ILLINOIS FED. AID PROJECT				

ENTRANCE SCHEDULE									
LOCATION	SIDE	TYPE	MAT'L	WIDTH	AREA	HMA SURF REMOVAL VARIABLE DEPTH	BITUMINOUS MATERIALS (TACK COAT)	INCIDENTAL HMA SURFACING	AGG SURF CSE . TYPE B
				FT	SQ FT	SQ YD	POUND	TON	TON
RURAL									
STA 67+55	RT	CE	HMA	84	840	93	42	14	
STA 68+00	LT	FE	AGG	18	54				0.3
STA 98+23	LT	FE	AGG	15	45				0.3
STA 127+00	RT	FE	AGG	22	66				0.4
STA 136+90	LT	FE	AGG	21	63				0.4
STA 139+05	RT	CE	HMA	49	490	54	25	8	
STA 191+00	LT	FE	AGG	17	51				0.3
STA 221+80	LT	FE	AGG	14	42				0.3
STA 242+25	LT	FE	AGG	18	54				0.3
STA 248+00	RT	CE	HMA	38	380	42	19	6	
STA 256+20	RT	PE	HMA	11	110	12	6	2	
STA 259+00	RT	PE	HMA	20	200	22	10	3	
STA 271+80	RT	CE	HMA	107	1070	119	54	18	
STA 273+05	LT	PE	HMA	17	170	19	9	3	
STA 276+00	LT	FE	AGG	14	42				0.3
STA 286+00	RT	PE	HMA	20	200	22	10	3	
STA 286+40	RT	PE	HMA	25	250	28	13	4	
STA 294+20	LT	FE	AGG	16	48				0.3
STA 348+35	LT	FE	HMA	23	230	26	12	4	
STA 377+60	LT	FE	AGG	18	54				0.3
STA 19+50	RT	FE	AGG	24	72				0.5
STA 17+00	LT	FE	AGG	21	63				0.4
STA 09+75	RT	FE	AGG	27	81				0.5
STA 09+40	LT	FE	AGG	16	48				0.3
TOTAL						437	200	65	5

PATCHING SCHEDULE							
LOCATION	PATCH LENGTH	PATCH WIDTH	CLASS B PATCH TYPE III 12"	CLASS B PATCH TYPE IV 10"	WELDED WIRE REINFORCEMENT	DOWEL BARS 1 1/2"	SAW CUTS
STA	FOOT	FOOT	SQ YD	SQ YD	SQ YD	w	FOOT
RURAL							
85+00	26	8	23		20	42	94
120+18	26	8	23		20	42	94
123+87	26	337		974	971	504	752
247+00	26	8	23		20	42	94
TOTAL			69	974	1031	630	1034

MODEL: Default
 FILE: \\mifs-pw-backend.com\PW\DOT\Documents\DOT Office\Dir\dir: 3\Project\366666\CD\DATA\366666-ent-schedule.dgn

USER NAME = NOLASCOCJ	DESIGNED -	REVISED -
	DRAWN -	REVISED -
PLOT SCALE = 100,0000 ' / in.	CHECKED -	REVISED -
PLOT DATE = 2/7/2022	DATE -	REVISED -

**STATE OF ILLINOIS
DEPARTMENT OF TRANSPORTATION**

SCHEDULE OF QUANTITIES			
SCALE:	SHEET	OF	SHEETS

F.A.S. RTE.	SECTION	COUNTY	TOTAL SHEETS	SHEET NO.
315	(121,122)RS-3	IROQUOIS	33	15
CONTRACT NO. 66D60				
ILLINOIS FED. AID PROJECT				

PAVEMENT MARKINGS																										
LOCATION		LENGTH	COMMENT	PAINT - 2 APPLICATIONS			THERMOPLASTIC PM					PREFORMED PLASTIC PM, TY B, -STD- LINE 24" WHITE	GROOVING FOR RECESSED PM					RAISED REF PM	RAISED REF PM	CURB REF						
				4" LINE WHITE	6" LINE YELLOW	6" LINE YELLOW	4" LINE WHITE	6" LINE YELLOW	8" LINE YELLOW	8" LINE WHITE	12" LINE WHITE		12" LINE YELLOW	LTR & SYM	5"	7"	9"				13"	25"	LTR & SYM			
STATION		FOOT		FOOT	FOOT	FOOT	FOOT	FOOT	FOOT	FOOT	FOOT	FOOT	FOOT	FOOT	FOOT	FOOT	FOOT	FOOT	FOOT	FOOT	FOOT	FOOT	FOOT			
RURAL																										
STA 48+00.00	TO STA 71+00.00	BK 2300		9200		1150																29	29			
STA 77+06.65	AH TO STA 105+94.32	BK 2888		11552		1444																36	36			
STA 106+00.00	AH TO STA 150+79.22	BK 4479		17916		2240																56	56			
STA 151+00.00	AH TO STA 161+00.00	BK 1000		4000		500																13	13			
STA 160+89.77	AH TO STA 213+00.00	BK 5210		20840		2606																65	65			
STA 213+10.81	AH TO STA 236+00.00		2289	9156		1144																29	29			
STA 236+00.00	TO STA 240+75.00		475	NO SB PASS	1900	950	238															12	12			
STA 240+75.00	TO STA 251+65.71	BK 1091		NO PASS	4364	4364																27	27			
STA 253+08.55	AH TO STA 256+66.43	BK 358		NO PASS	1432	1432																9	9			
STA 256+58.17	AH TO STA 274+48.81	BK 1791		NO PASS	7164	7164																45	45			
STA 274+56.20	AH TO STA 293+00.00		1844	NO PASS	7376	7376																46	46			
STA 293+00.00	TO STA 304+00.00		1100	NO NB PASS	4400	2200	550															14	14			
STA 304+00.00	TO STA 323+34.10	BK 1934		7736		968																24	24			
STA 323+79.25	AH TO STA 358+37.21	BK 3458		13832		1730																43	43			
STA 358+00.00	AH TO STA 430+09.16	BK 7209		28836		3604																90	90			
STA 33+12.17	AH TO STA 17+45.44		1567		6268		784															20	20			
STA 17+45.44	TO STA 13+79.02		366	NO SB PASS	1464	732	184															5	5			
STA 13+79.02	TO STA 12+52.57		126	NO PASS	504	504																2	2			
STA 12+52.57	TO STA 8+50.00		403	NO PASS			806	1612				114										2418		114		
STA 8+50.00	TO STA 6+90.00		160	NO PASS			320	640		40		64										960		40	64	
STA 6+90.00	TO STA 5+04.80		185	NO PASS			490	370	40	357	360		62									860	40	357	360	
TOTALS			40233				182662	17142	4238	40	397	538	62									80	4238	40	397	538

ADA SCHEDULE								
DESCRIPTION	LOCATION		PVMT REM	PORTLAND CEMENT CONCRETE SIDEWALK 4"	SIDEWALK REMOVAL	DETECTABLE WARNINGS	CCC&G TYPE B- 6.24	EROSION CONTROL BLANKET
	STA	QUADRANT						
RURAL								
		NW	2.32	68	50	8	29	
CHESTNUT AVE	270+66	NE	0.31	46	41	8	21	
		SW	0.17	34	31	8	12	
		SE	0.67	74	72	8	25	
		NW	24	214	71	20	38	16
LINCOLN AVE	267+45	NE	15	25	18	20	57	13
		SW	11	36	11	10	34	19
		SE	2	7		10	11	
CHURCH	262+30	NW		8	5	8	11	
TOTALS			55	512	299	100	238	48

SHORT TERM PAVEMENT MARKINGS					
LOCATION		LENGTH	COMMENT	SHORT TERM PM	SHORT TERM PM REM
STATION				FOOT	FOOT
RURAL					
STA 48+00.00	TO STA 71+00.00	BK 2300		230	77
STA 77+06.65	AH TO STA 105+94.32	BK 2888		289	96
STA 106+00.00	AH TO STA 150+79.22	BK 4479		448	149
STA 151+00.00	AH TO STA 161+00.00	BK 1000		100	33
STA 160+89.77	AH TO STA 213+00.00	BK 5210		521	174
STA 213+10.81	AH TO STA 236+00.00		2289	229	76
STA 236+00.00	TO STA 240+75.00		475	NO SB PASS	48
STA 240+75.00	TO STA 251+65.71	BK 1091	NO PASS	109	36
STA 253+08.55	AH TO STA 256+66.43	BK 358	NO PASS	36	12
STA 256+58.17	AH TO STA 274+48.81	BK 1791	NO PASS	179	60
STA 274+56.20	AH TO STA 293+00.00		1844	NO PASS	184
STA 293+00.00	TO STA 304+00.00		1100	NO NB PASS	110
STA 304+00.00	TO STA 323+34.10	BK 1934		193	64
STA 323+79.25	AH TO STA 358+37.21	BK 3458		346	115
STA 358+00.00	AH TO STA 430+09.16	BK 7209		721	240
STA 33+12.17	AH TO STA 17+45.44		1567		157
STA 17+45.44	TO STA 13+79.02		366	NO SB PASS	37
STA 13+79.02	TO STA 12+52.57		126	NO PASS	13
STA 12+52.57	TO STA 8+50.00		403	NO PASS	40
STA 8+50.00	TO STA 6+90.00		160	NO PASS	16
STA 6+90.00	TO STA 5+04.80		185	NO PASS	26
TOTALS			40233		4032
					1341

MODEL: Default
 FILE: \\mifs-pw-beadley.com\FW\DOT\Documents\DOT Office\Dir\dir: 3\Project\366960\CAD\DATA\366960-INT-sched.ada.com

USER NAME = NOLASCOCJ	DESIGNED -	REVISED -
	DRAWN -	REVISED -
PLOT SCALE = 100,0000' / in.	CHECKED -	REVISED -
PLOT DATE = 2/7/2022	DATE -	REVISED -

STATE OF ILLINOIS
DEPARTMENT OF TRANSPORTATION

SCHEDULE OF QUANTITIES			
SCALE:	SHEET	OF	SHEETS

F.A.S. RTE.	SECTION	COUNTY	TOTAL SHEETS	SHEET NO.
315	(121,122)RS-3	IROQUOIS	33	16
CONTRACT NO. 66D60				
ILLINOIS FED. AID PROJECT				

MAINTENANCE SCHEDULE

STATION	SIZE/TYPE	STR NO.	SIDE	WORK DESCRIPTION	PIPE CULVS TO BE CLEANED	BOX CULV TO BE CLEANED	CHANNEL EXCAVATION	EARTH EXCAVATION	GRADING & SHAPING DITCH	STONE RIPRAP CLASS A3	STONE RIPRAP CLASS A4	FILTER FABRIC	GROUT REPAIR	FLOWABLE FILL	SS TO BE CLEANED 12"	CLEANING EXISTING INLETS	DELINEATORS
					18" FT	FT	CU YD	CU YD	FOOT	SQ YD	SQ YD	SQ YD	FT	CU YD	FT	EA	EACH
RURAL																	
57+00	4x2 BOX CULVERT	643	LT TO RT	CLEAN BARREL		72											2
70+00	4x3 BOX CULVERT	187	LT TO RT	CLEAN BARREL		56											2
73+40	18" CLAY PIPE	186	LT TO RT	CLEAN PIPE CULVERT	58												2
110+00	18" CLAY PIPE	183	LT TO RT	*CLEAN PIPE CULVERT, GROUT DISCONTINUED TILE & PLACE 2 SY RR3	58					2		2	5				2
126+00	12" SS TY 1		RT	CLEAN SS & PLACE 6'X6' APRON RR3 @ STA 126+00 CATCH BASIN						4		4			52		2
169+00	3X2 BOX CULV	180	LT TO RT	CLEAN BARREL		58											2
230+00	4x3 BOX CULVERT	177	RT	PLACE 4 SY OF RR4 AT CULVERT OUTLET							4	4					2
283+00	BRIDGE	038-0182	RT	CLEAN SOUTH APPROACH SHLD DRAINS, GRADE OUTLET TO DRAIN & PLUG UNDERMINING AT NE APPROACH				2.2	25					1		2	2
300+50	3X2 BOX CULV	174	LT TO RT	CLEAN BARREL		58											2
318+57	18" CLAY PIPE	173	LT TO RT	CLEAN PIPE CULVERT	58												2
27+72	CIP DOUBLE 10X9 BOX CULV	038-2011	LT TO RT	CLEAN BOTH BARRELS REMOVING SILTS ON THE CHANNEL BOTH LT & RT		152	59.2										2
TOTAL					174	396	60	5	25	6	4	10	5	1	52	2	18

* THERE IS A TILE JUST SOUTH OF 2400N RD @ OUTLET OF CULVERT# 183. GROUT AND PLACE RR3 TO PREVENT FURTHER EROSION

**PLUG UNDERMINING PAID FOR AS FLOWABLE FILL

CULVERT SCHEDULE

STA	TYPE/SIZE	END SECTION EXISTING	STR NO	LOCATION DESCRIPTION	PIPE CULV REM	REM CONC END SEC	PIPE CULVERTS, CLASS A, TYPE 1, EQUIVALENT ROUND-SIZE 18"	PRECAST REINFORCED CONC FLARED END SEC 18"	INSERT CULVERT LINER 21"	STONE RIPRAP CLASS A3	FILTER FABRIC	TRENCH BACKFILL	CHANNEL EXCAVATION	DELINEATORS
					FOOT	EA	FOOT	EACH	FOOT	SQ YD	SQ YD	CU YD	CU YD	EACH
85+00	18" CLAY	CONCRETE	185	0.8 MILES SOUTH OF IQOQUOIS TOWN	42	2	40	2		48	48	10.48	14.8	2
120+18	15" CLAY	CONCRETE	642	0.2 MILE SE OF E 2400 N RD	42	2	40	2		48	48	10.48	14.8	2
247+00	18" CLAY	CONCRETE	176	0.2 MILE WEST OF GREELY ST.	42	2	80	4		70	70	20.96	14.8	2
363+80	3X2 BOX CULV	CONCRETE	170	0.5 MILE SOUTH OF E 2030 NORTH RD.					42					2
TOTAL					126	6	160	8	42	166	166	45	45	8

SEEDING SCHEDULE

LOCATION	DESCRIPTION	SIDE	LENGTH	WIDTH	SEEDING, CLASS 2A	NITROGEN FERTILIZER NUTRIENT (90 LB/ACRE)	PHOSPHORUS FERTILIZER NUTRIENT (90 LB/ACRE)	POTASSIUM FERTILIZER NUTRIENT (90 LB/ACRE)	EROSION CONTROL BLANKET	
						FOOT	FOOT	ACRE	POUND	POUND
RURAL										
STA 69+50 TO STA 70+00	900' S OF S ST	WEST	50	27	0.031	2.8	2.8	2.8	150	
STA 113+20 TO STA 115+60	370' S OF CO RD E2400N	WEST	240	27	0.149	13.4	13.4	13.4	720	
STA 118+20 TO STA 120+20	870' S OF CO RD E2400N	EAST	200	27	0.124	11.2	11.2	11.2	600	
STA 122+50 TO STA 124+00	150' N OF SN 038-0106	WEST	150	27	0.093	8.4	8.4	8.4	450	
STA 124+50 TO STA 126+00	50' S OF SN 038-0106	EAST	150	27	0.093	8.4	8.4	8.4	450	
STA 168+50 TO STA 169+00	330' S OF E2300 N RD	EAST	50	27	0.031	2.8	2.8	2.8	150	
STA 277+50 TO STA 279+00	50' S OF W IROQUOIS AVE.	EAST	150	27	0.093	8.4	8.4	8.4	450	
STA 284+08 TO STA 284+13	SN 038-0182	WEST	5	12	0.001	0.1	0.1	0.1	7	
STA 284+08 TO STA 284+13	SN 038-0182	EAST	5	12	0.001	0.1	0.1	0.1	7	
STA 17+00 TO STA 16+00	1170 N OF US 24	WEST	100	27	0.062	5.6	5.6	5.6	300	
TOTAL						0.75	68	68	68	3284

DELINEATOR PANEL SCHEDULE

STRUCTURE NUMBER	SIDE	STR CL STA	LENGTH FT	LINEAR DELINEATION PANELS, 4"	LINEAR DELINEATION PANELS, 6"
				EACH	EACH
RURAL					
038-2002	RT	100+00	230	4	
038-2002	LT	100+00	230	4	
038-0106	RT	124+00	312.5	5	4
038-0106	LT	124+00	518	7	4
038-0182	RT	283+05	850	12	
038-0182	LT	283+05	800	11	
TOTAL				43	8

DITCH CLEANING SCHEDULE

LOCATION	DESCRIPTION	SIDE	LENGTH	FLOW DIRECTION	GRADING & SHAPING DITCH
					FOOT
RURAL					
STA 69+50 TO STA 70+00	1800' S OF CONTRACT START	WEST	50	NORTH	50
STA 113+20 TO STA 115+60	370' S OF CO RD E2400N	WEST	240	NORTH	240
STA 118+20 TO STA 120+20	870' S OF CO RD E2400N	EAST	200	NORTH	200
STA 122+50 TO STA 124+00	150' N OF SN 038-0106	WEST	150	NORTH	150
STA 124+50 TO STA 126+00	50' S OF SN 038-0106	EAST	150	NORTH	150
STA 168+50 TO STA 169+00	330' S OF E2300 N RD	EAST	50	NORTH	50
STA 277+50 TO STA 279+00	50' S OF W IROQUOIS AVE.	EAST	150	SOUTH	150
STA 17+00 TO STA 16+00	1170 N OF US 24	WEST	100	NORTH	100
TOTAL					1090

MODEL: Default
 FILE: \\blueteam-bea-bay.com\PIV\DOT\Documents\DOT Office\Dir\Dir: 3\Project\10366960\CAD\DATA\0366960-INT-schedule.dwg

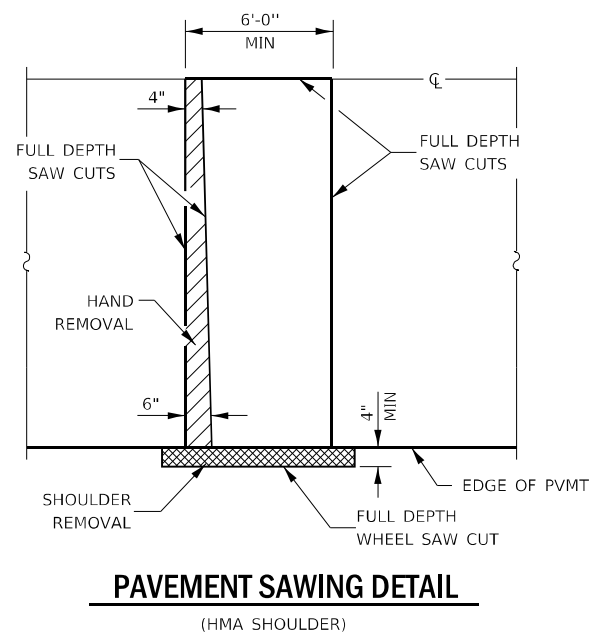
USER NAME = NOLASCOCJ	DESIGNED -	REVISED -
	DRAWN -	REVISED -
PLOT SCALE = 100,0000' / in.	CHECKED -	REVISED -
PLOT DATE = 2/7/2022	DATE -	REVISED -

**STATE OF ILLINOIS
DEPARTMENT OF TRANSPORTATION**

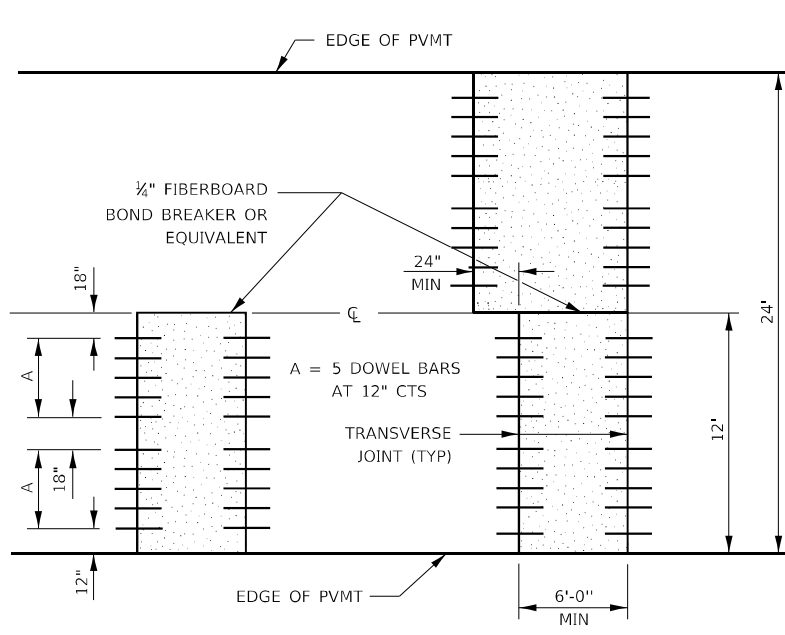
SCHEDULE OF QUANTITIES

SCALE: SHEET OF SHEETS STA. TO STA.

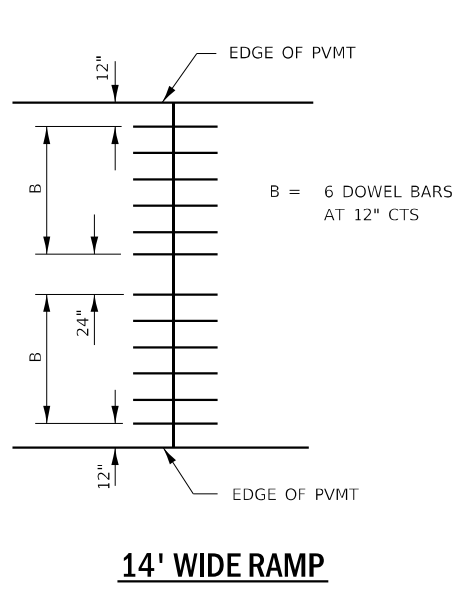
F.A.S. RTE.	SECTION	COUNTY	TOTAL SHEETS	SHEET NO.
315	(121,122)RS-3	IROQUOIS	33	17
CONTRACT NO. 66D60				
ILLINOIS FED. AID PROJECT				



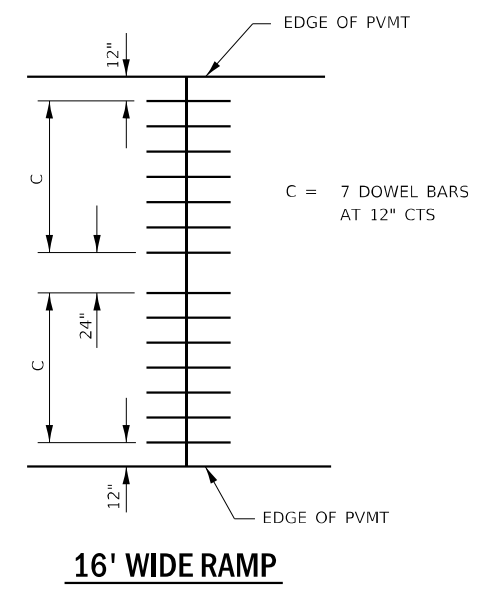
PAVEMENT SAWING DETAIL
(HMA SHOULDER)



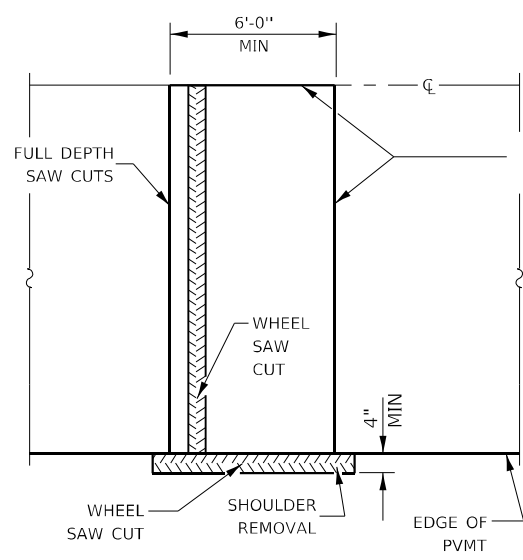
12' WIDE LANES



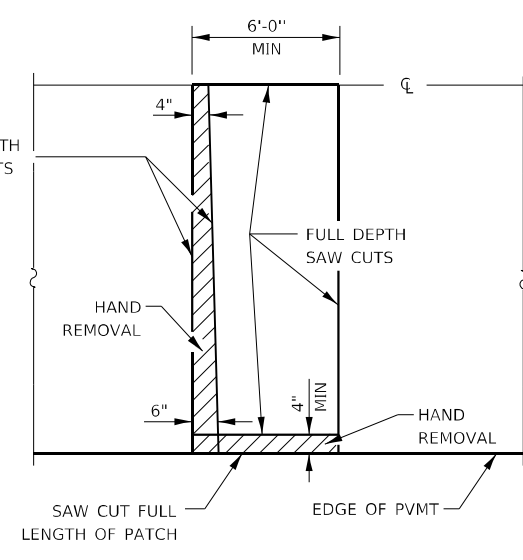
14' WIDE RAMP



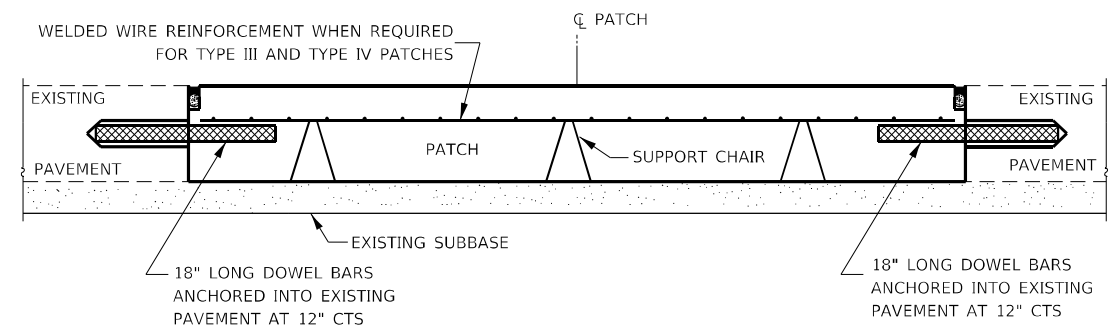
16' WIDE RAMP



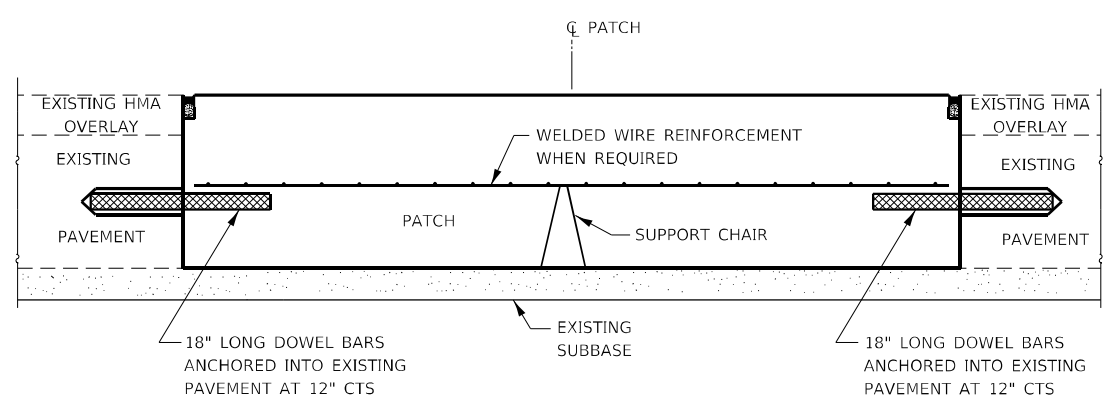
ALTERNATE SAWING DETAIL
(HMA SHOULDER)



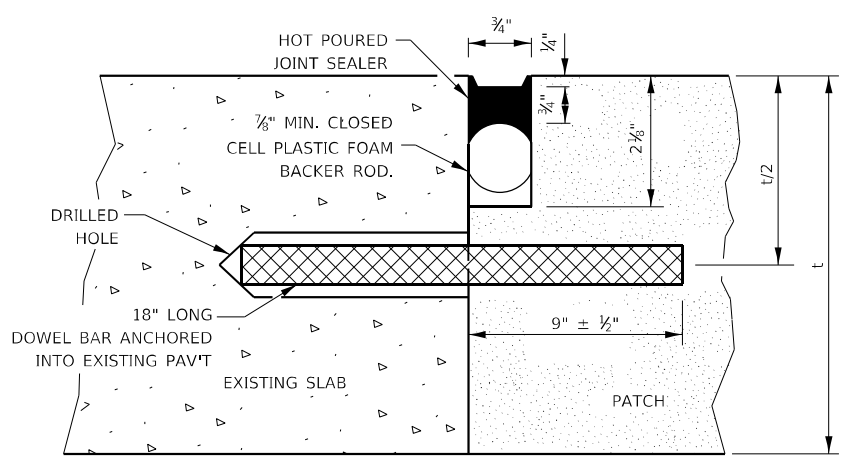
PAVEMENT SAWING DETAIL
(PCC SHOULDER)



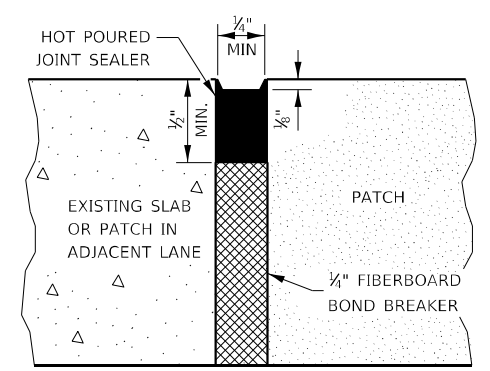
PATCHING WITHOUT HMA OVERLAY



PATCHING WITH HMA OVERLAY



TRANSVERSE JOINT



CENTERLINE JOINT

DOWEL BAR TABLE		
PAVEMENT THICKNESS	DOWEL BAR DIAMETER	HOLE DIAMETER
8" OR GREATER	1 1/2"	1 3/8"
7" THRU 7.99"	1 1/4"	1 3/8"
LESS THAN 7"	1"	1 3/8"

GENERAL NOTES

THE TRANSVERSE JOINTS FOR CLASS B PATCHES SHALL ALIGN WITH JOINTS OR CRACKS IN THE ADJACENT LANE WHENEVER POSSIBLE.
SEE STANDARD 420701 FOR DETAILS OF PAVEMENT WELDED WIRE REINFORCEMENT.

MODEL: Default; FILE: 66d60.ctb; PROJECT: 66D60; SHEET: 315; DATE: 2/7/2022

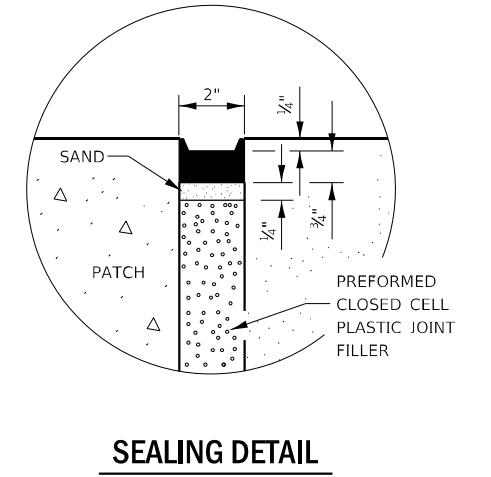
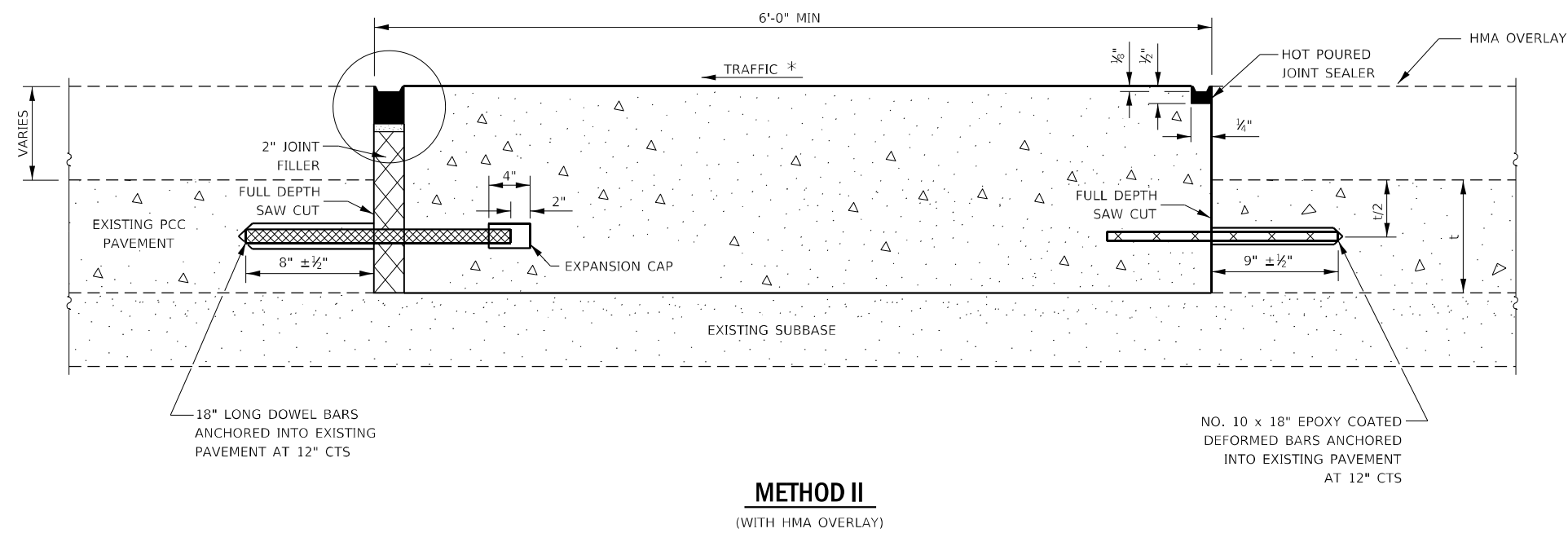
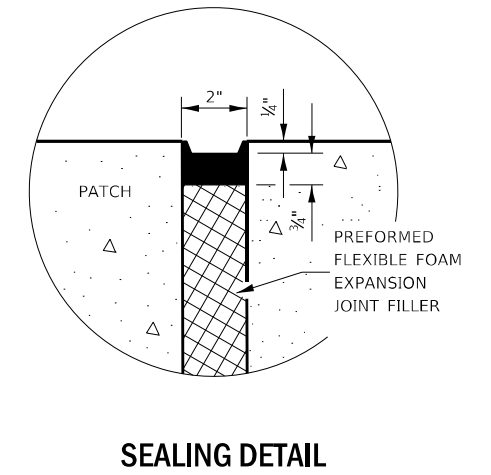
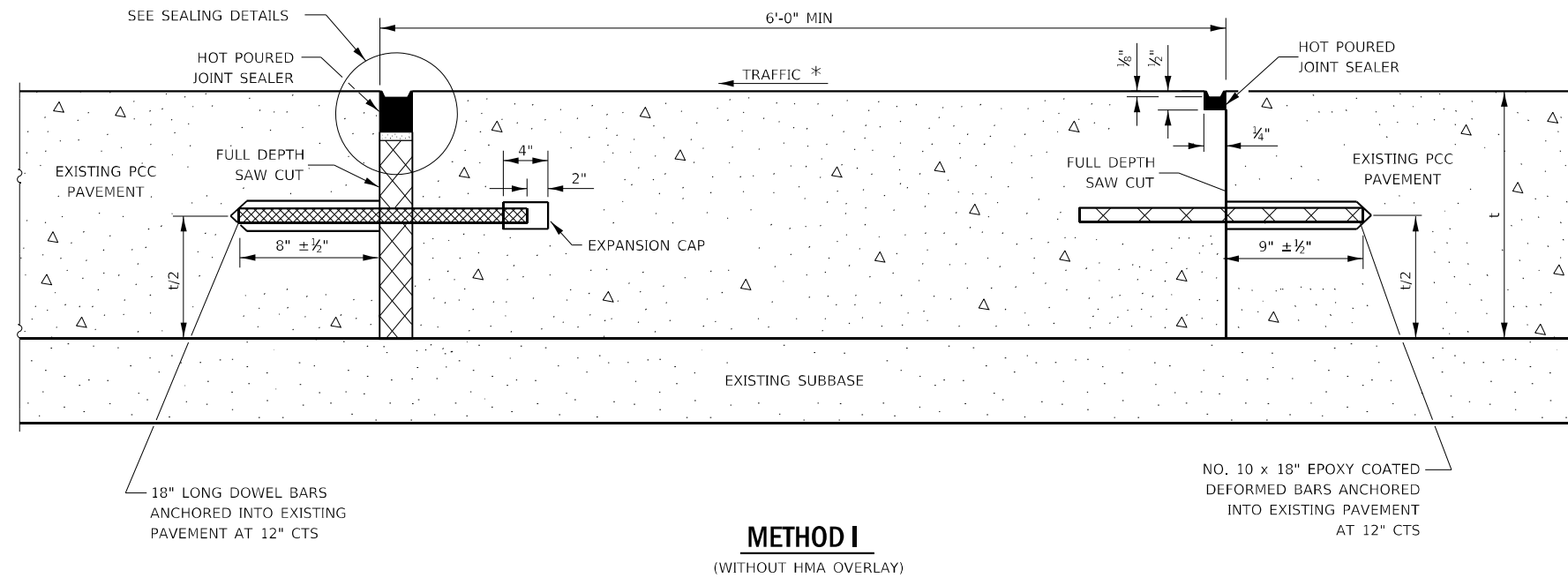
USER NAME = NOLASCOCJ	DESIGNED -	REVISED -
PLOT SCALE = 100,0000' / in.	DRAWN -	REVISED -
PLOT DATE = 2/7/2022	CHECKED -	REVISED -
	DATE -	REVISED -

**STATE OF ILLINOIS
DEPARTMENT OF TRANSPORTATION**

CLASS B PATCHING DETAILS

SCALE: SHEET OF SHEETS STA. TO STA.

F.A. RTE.	SECTION	COUNTY	TOTAL SHEETS	SHEET NO.
315	(121,122)RS-3	IROQUOIS	33	18
CONTRACT NO. 66D60				
ILLINOIS FED. AID PROJECT				

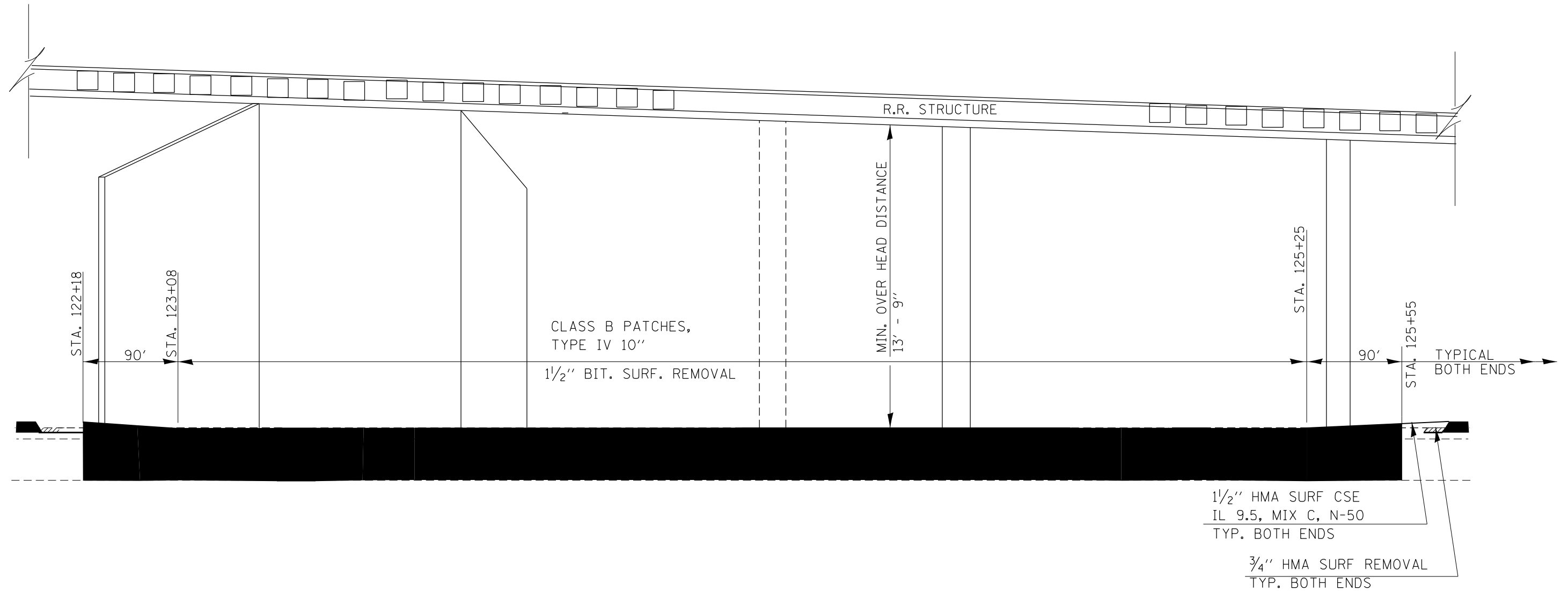


NOTE

* WHEN RE-ESTABLISHING A TRANSVERSE EXPANSION JOINT ON A TWO-WAY ROAD, REVERSE THE ORIENTATION OF THE DOWEL BARS WITH RESPECT TO TRAFFIC FOR ONE OF THE PATCHES SUCH THAT THE JOINT WILL BE CONTINUOUS ACROSS BOTH LANES.

MODEL: Default
 FILE NAME: p:\bulletect-pw-bentley.com\p\INDOT\Documents\DOT Office\Dir\dr: 3\Project\10366960\CADD\10366960-01-01-01-01.dgn

USER NAME = NOLASCOCJ DESIGNED - DRAWN - PLOT SCALE = 100,0000' / in. CHECKED - DATE - DATE = 2/7/2022	DESIGNED - DRAWN - CHECKED - DATE -	REVISED - REVISED - REVISED - REVISED -	STATE OF ILLINOIS DEPARTMENT OF TRANSPORTATION	CLASS B PATCHING DETAILS	F.A. RTE. 315 SECTION (121,122)RS-3 COUNTY IROQUOIS TOTAL SHEETS 33 SHEET NO. 19 CONTRACT NO. 66D60 ILLINOIS FED. AID PROJECT
--	--	--	---	--------------------------	---



PROPOSED TAPERS AT
BRIDGE #038-0106
STA. 123 + 08 to STA. 125 + 25

MODEL: Default
 FILE: h:\m\p\p\subject-pw-bee\paw.com\PIV\DOT\Documents\DOT Office\Dir\ret. 3\Project\10366960\CAD\Drawings\666D60-rr-taper.dgn

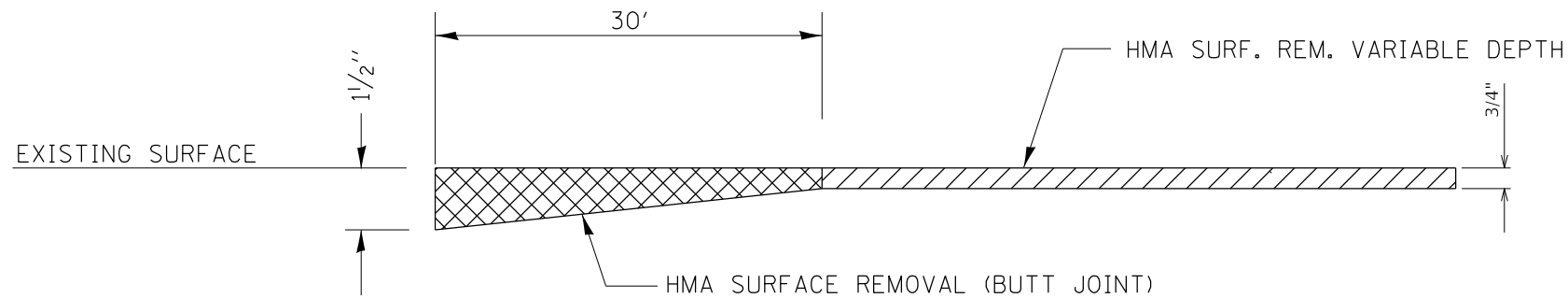
USER NAME = NOLASCOCJ	DESIGNED -	REVISED -
	DRAWN -	REVISED -
PLOT SCALE = 100,0000 ' / in.	CHECKED -	REVISED -
PLOT DATE = 2/7/2022	DATE -	REVISED -

STATE OF ILLINOIS
DEPARTMENT OF TRANSPORTATION

RR TAPER DETAILS

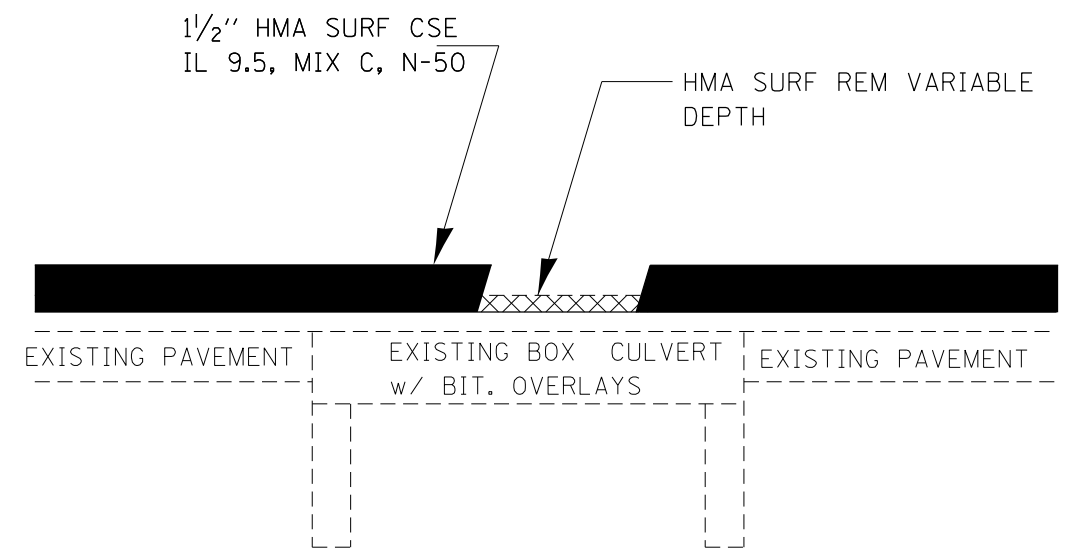
SCALE: SHEET OF SHEETS STA. TO STA.

F.A.S. RTE.	SECTION	COUNTY	TOTAL SHEETS	SHEET NO.
315	(121,122)RS-3	IROQUOIS	33	20
ILLINOIS FED. AID PROJECT			CONTRACT NO. 66D60	

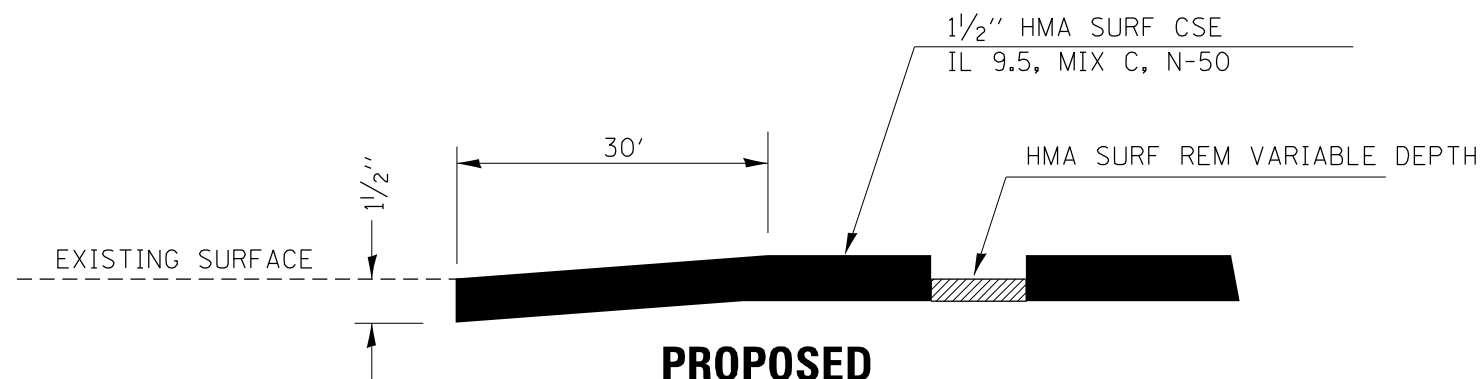


**PROPOSED
BITUMINOUS SURFACE REMOVAL TAPER
DETAIL (TYPICAL)**

STA. 306+35 - STA. 306+65
STA. 306+75 - STA. 307+05
STA. 7+15 - STA. 6+85



**BITUMINOUS SURFACE REMOVAL AT
BOX CULVERTS S.N. 038-2011**



**PROPOSED
BITUMINOUS TAPER DETAIL**

STA. 306+35 - STA. 306+65
STA. 306+75 - STA. 307+05
STA. 7+15 - STA. 6+85

MODEL: Default
FILE NAME: p:\ultra-cad\bea\paw.com\PIV\DOT\Documents\DOT Office\Dir\drf: 3\Project\306696\CAD\DATA\306696\cst-detail.dgn

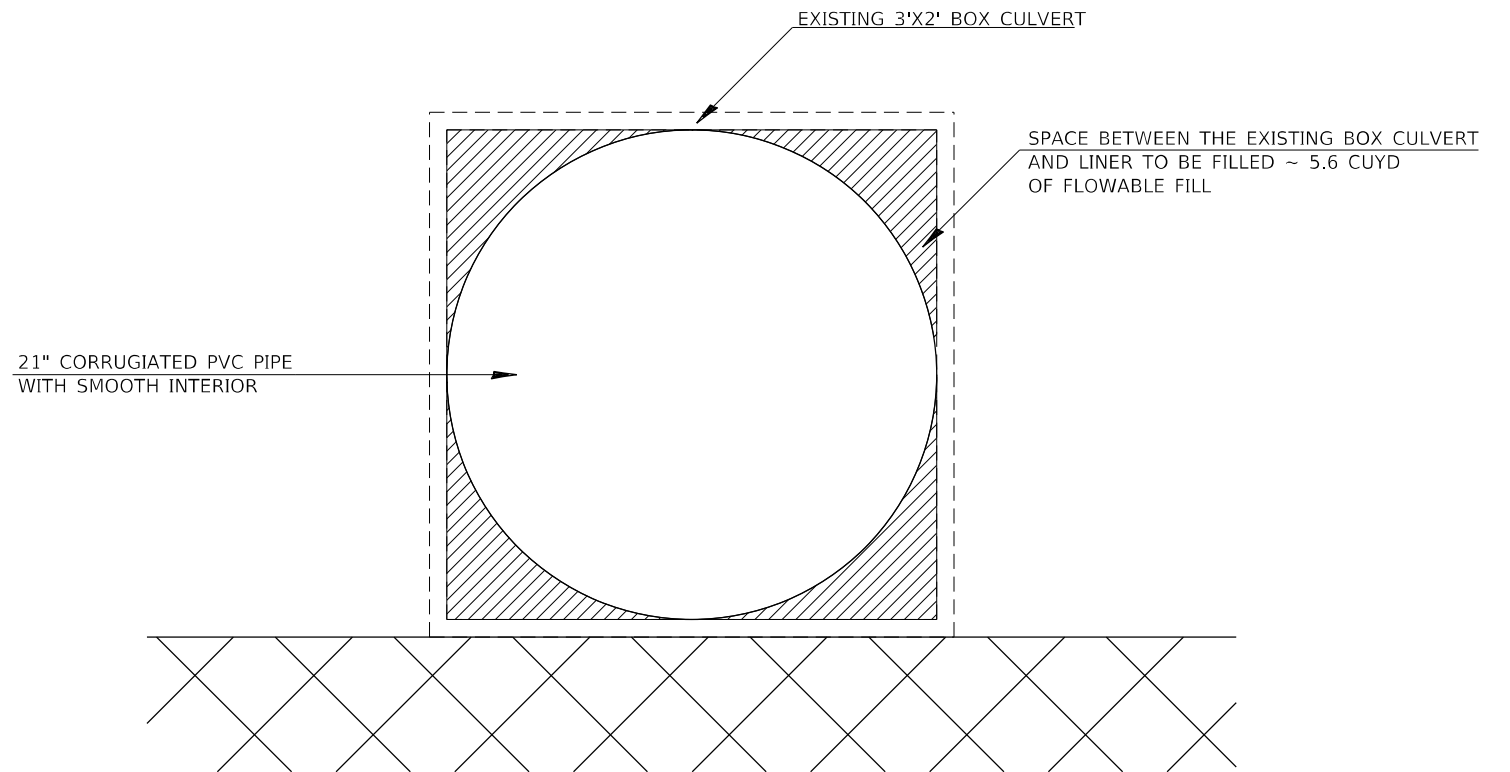
USER NAME = NOLASCOCJ	DESIGNED -	REVISED -
PLOT SCALE = 100,0000' / in.	DRAWN -	REVISED -
PLOT DATE = 2/7/2022	CHECKED -	REVISED -
	DATE -	REVISED -

**STATE OF ILLINOIS
DEPARTMENT OF TRANSPORTATION**

TAPER DETAILS

SCALE: SHEET OF SHEETS STA. TO STA.

F.A.S. RTE.	SECTION	COUNTY	TOTAL SHEETS	SHEET NO.
315	(121,122)RS-3	IROQUOIS	33	21
ILLINOIS FED. AID PROJECT			CONTRACT NO. 66D60	



CULVERT #170

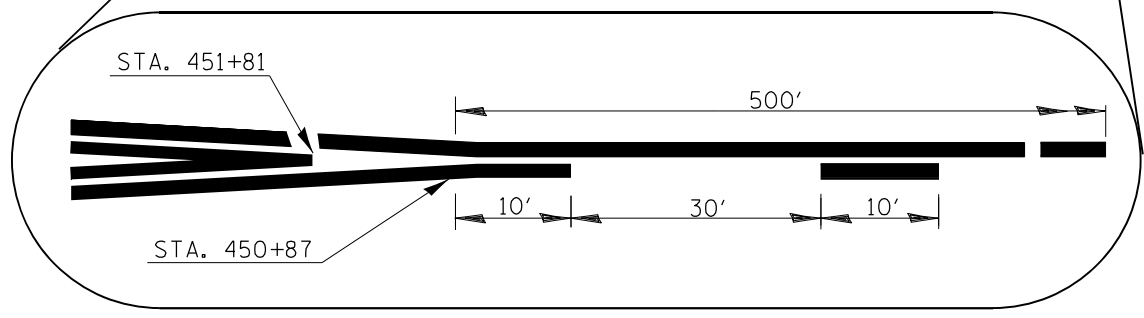
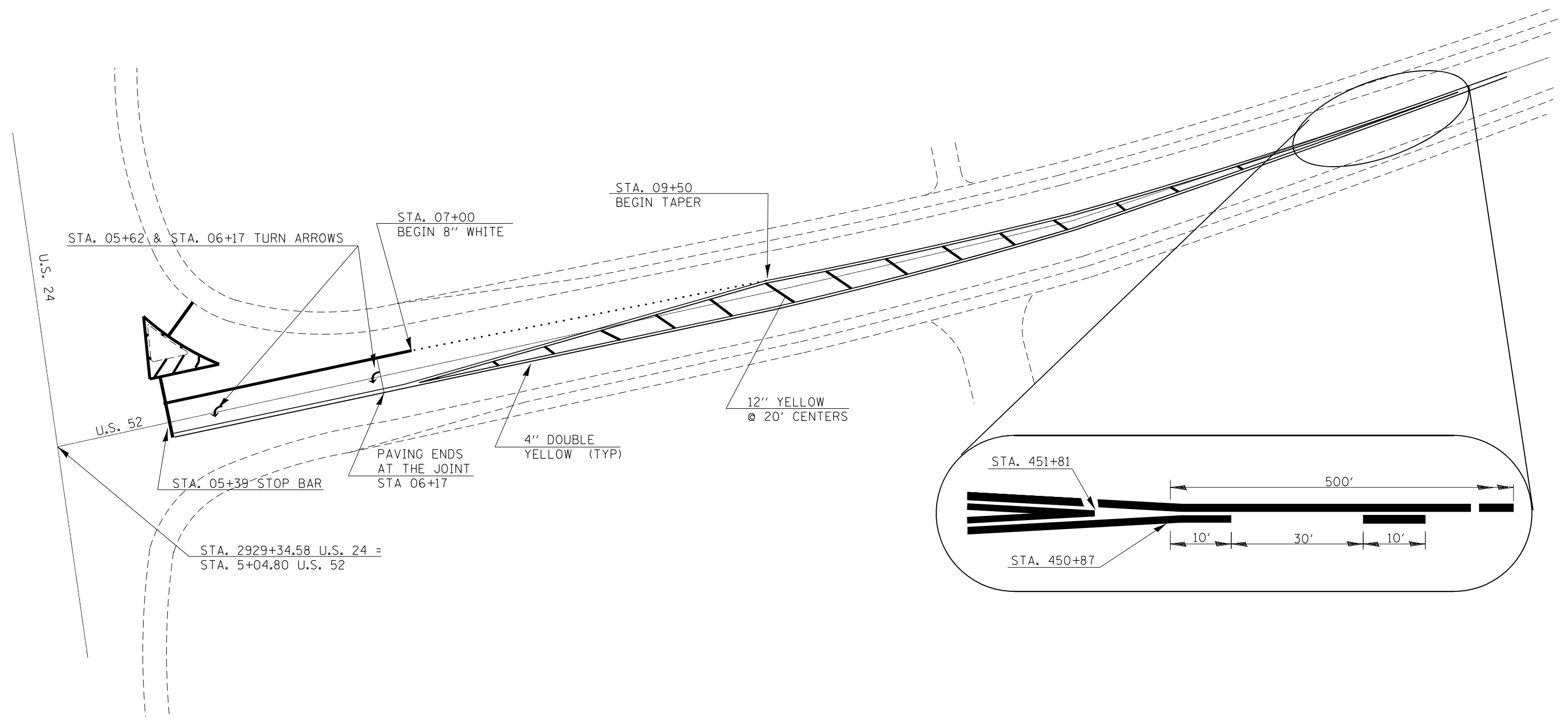
NOTES:

1. EXISTING 3X2 BOX CULVERT SHALL BE DEWATERED AND CLEANED OF ALL FOREIGN MATERIALS
2. 21" CORRUGATED PVC PIPE WITH SMOOTH INTERIOR SHALL BE INSERTED INTO EXISTING 3X2 BOX CULVERT AS SHOWN ON PLAN DETAIL.
3. THIS WORK WILL BE PAID FOR AT THE CONTRACT UNIT PER FOOT FOR INSERTION CULVERT LINER.

MODEL: Default
 FILE NAME: p:\ultra-cw-beadray.com\PIV\DOT\Documents\DOT Office\Dir\dir: 3\Project\0366960\CAD\DATA\0366960-ct-detail.dgn

	USER NAME = NOLASCOCJ PLOT SCALE = 100,0000 ' / in. PLOT DATE = 2/7/2022	DESIGNED - DRAWN - CHECKED - DATE -	REVISED - REVISED - REVISED - REVISED -	STATE OF ILLINOIS DEPARTMENT OF TRANSPORTATION	CULVERT LINER DETAILS	SCALE: SHEET OF SHEETS STA. TO STA.	<table border="1" style="width: 100%; border-collapse: collapse;"> <tr> <th>F.A.S. RTE.</th> <th>SECTION</th> <th>COUNTY</th> <th>TOTAL SHEETS</th> <th>SHEET NO.</th> </tr> <tr> <td>315</td> <td>(121,122)RS-3</td> <td>IROQUOIS</td> <td>33</td> <td>23</td> </tr> <tr> <td colspan="5" style="text-align: center;">CONTRACT NO. 66D60</td> </tr> <tr> <td colspan="5" style="text-align: center;">ILLINOIS FED. AID PROJECT</td> </tr> </table>	F.A.S. RTE.	SECTION	COUNTY	TOTAL SHEETS	SHEET NO.	315	(121,122)RS-3	IROQUOIS	33	23	CONTRACT NO. 66D60					ILLINOIS FED. AID PROJECT				
F.A.S. RTE.	SECTION	COUNTY	TOTAL SHEETS	SHEET NO.																							
315	(121,122)RS-3	IROQUOIS	33	23																							
CONTRACT NO. 66D60																											
ILLINOIS FED. AID PROJECT																											

MODEL: Default
 FILE: \\nlp1101\pww\bluestar\bluestar.com\PIV\DOT\Documents\DOT Office\Dir\Dir: 3\Project\10366960\CAD\DATA\366960-INT-DETAILS.dgn



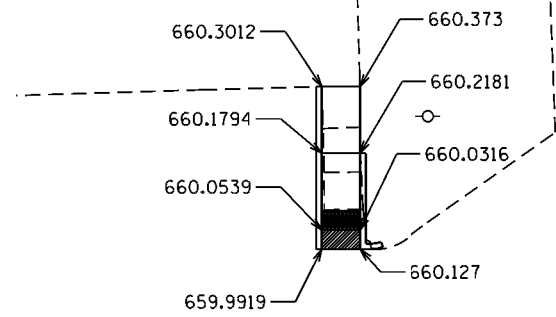
USER NAME = NOLASCOCJ	DESIGNED -	REVISED -
DRAWN -	REVISOR -	
PLOT SCALE = 100,0000' / in.	CHECKED -	REVISED -
PLOT DATE = 2/7/2022	DATE -	REVISED -

**STATE OF ILLINOIS
 DEPARTMENT OF TRANSPORTATION**

PAVEMENT MARKING DETAILS US 52 & US 24 INTERSECTION

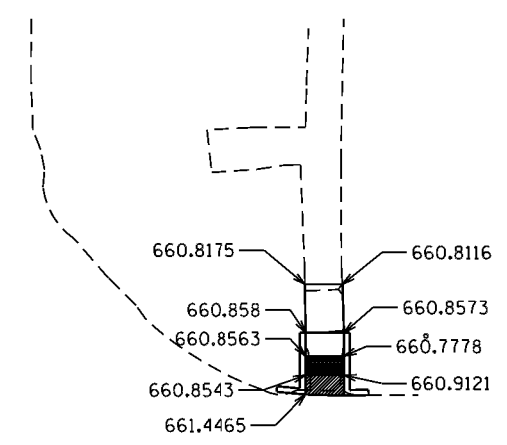
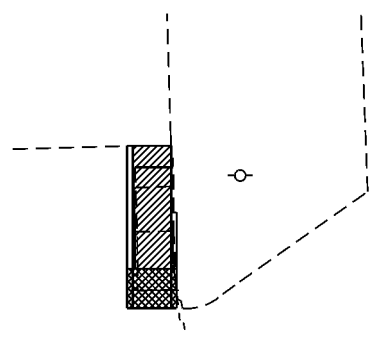
SCALE: SHEET OF SHEETS STA. TO STA.

F.A.S. RTE. 315	SECTION (121,122)RS-3	COUNTY IROQUOIS	TOTAL SHEETS 33	SHEET NO. 26
CONTRACT NO. 66D60			ILLINOIS FED. AID PROJECT	



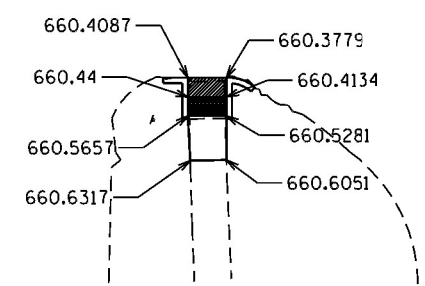
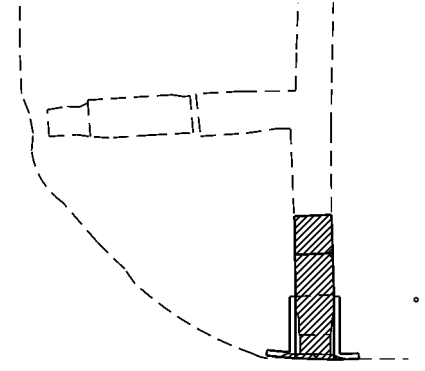
SIDEWALK REMOVAL = 50 SF
 SIDEWALK 4" = 68 SF
 DETECTABLE WARNING = 8 SF
 CCC&G = 29 FT
 PAVEMENT REMOVAL = 2.32 SQ YD

NW QUADRANT



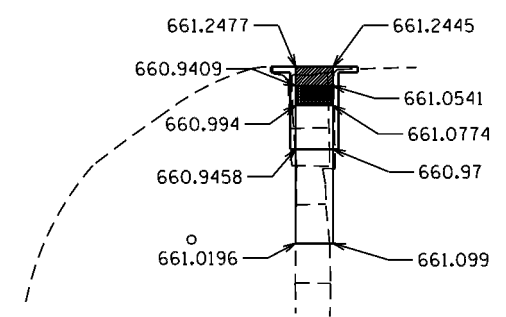
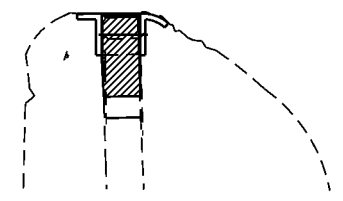
SIDEWALK REMOVAL = 41 SF
 SIDEWALK 4" = 46 SF
 DETECTABLE WARNING = 8 SF
 CCC&G = 21 FT
 PAVEMENT REMOVAL = 0.31 SQ YD

NE QUADRANT



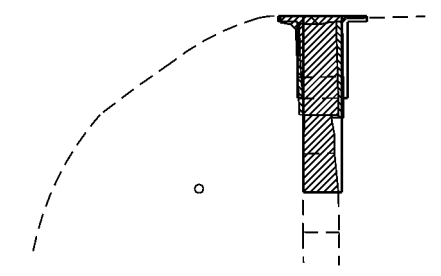
SIDEWALK REMOVAL = 31 SF
 SIDEWALK 4" = 34 SF
 DETECTABLE WARNING = 8 SF
 CCC&G = 12 FT
 PAVEMENT REMOVAL = 0.17 SQ YD

SW QUADRANT



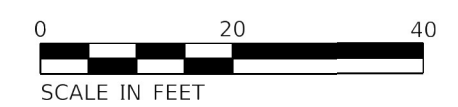
SIDEWALK REMOVAL = 72 SF
 SIDEWALK 4" = 74 SF
 DETECTABLE WARNING = 8 SF
 CCC&G = 25 FT
 PAVEMENT REMOVAL = 0.67 SQ YD

SE QUADRANT



- CURB AND GUTTER REMOVAL
- SIDEWALK REMOVAL
- PAVEMENT REMOVAL
- DETECTABLE WARNING
- TURNING SPACE / LEVEL LANDING
15% CROSS-SLOPE BOTH DIRECTION
- SEEDING/FERTILIZER AREA
INCLUDED IN SW WORK

- NOTES:
- SEE HIGHWAY STANDARDS 424001 - 424031 FOR MAX SLOPES AND ADDITIONAL REQUIREMENTS.
 - SEE HIGHWAY STANDARD 606001 FOR CURB AND GUTTER REQUIREMENTS NEXT TO ADA RAMP.
 - ALL CROSS-SLOPES IN THE DIRECTION OF TRAVEL ARE AN ABSOLUTE MAXIMUM OF 2% LAYOUT SHOULD BE AT 1.5% TO ALLOW FOR ERROR WHILE REMAINING WITH THE MAXIMUM SLOPE.
 - SIDEWALK CURBS ARE SHOWN ONLY AS REQUIRED BY FIELD CONDITIONS AND MAY BE OMITTED IF FOUND TO BE UNNECESSARY.
 - PEDESTRIAN PUSH BUTTON SIGN PAY ITEM TO BE INCIDENTAL TO THE PEDESTRIAN PUSH BUTTON PAY ITEM.



MODEL: Default
 FILE: \\miller-pw-bentley.com\PWID\Documents\DOT Offices\District_3\Projects\0366660\CADD\1410266660-141 PROPOSED.dwg
 PROJECT: 0366660

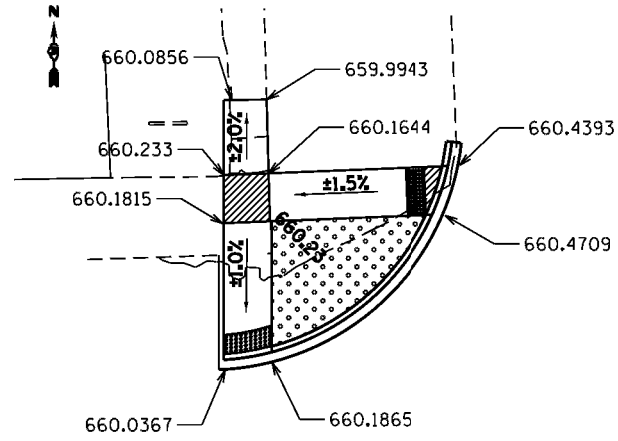
USER NAME = NOLASCOCJ	DESIGNED -	REVISED -
	DRAWN -	REVISED -
PLOT SCALE = 20.0000' / 1"	CHECKED -	REVISED -
PLOT DATE = 2/7/2022	DATE -	REVISED -

STATE OF ILLINOIS
 DEPARTMENT OF TRANSPORTATION

ADA DETAILS CHESTNUT AVENUE

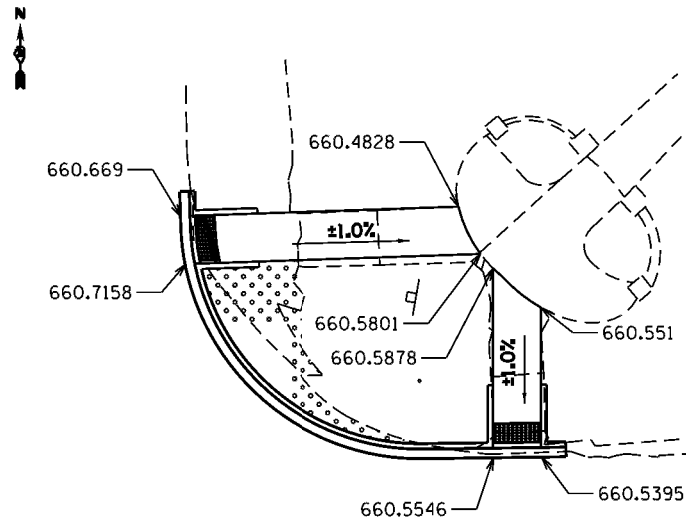
SCALE: SHEET OF SHEETS STA. TO STA.

F.A.S. RTE.	SECTION	COUNTY	TOTAL SHEETS	SHEET NO.
315	(121,122)R5-3	IROQUOIS	33	27
CONTRACT NO. 66D60				
ILLINOIS FED. AID PROJECT				



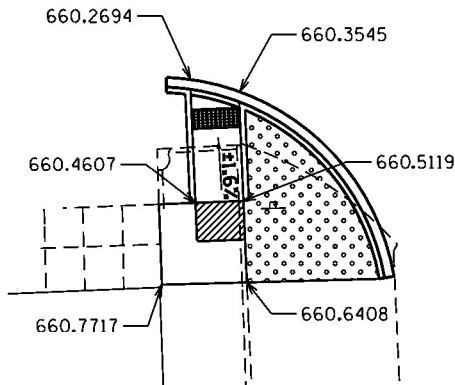
SIDEWALK REMOVAL = 71 SF
 SIDEWALK 4" = 214 SF
 DETECTABLE WARNING = 20 SF
 CCC&G = 38 FT
 PAVEMENT REMOVAL = 24 SQ YD
 LAND SCAPING = 16 SQ YD

NW QUADRANT



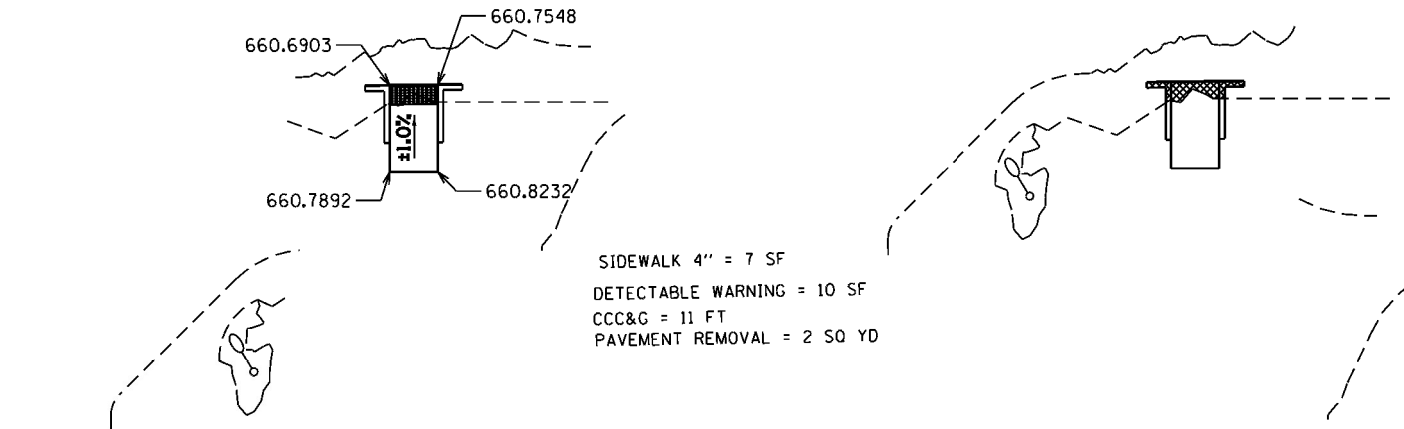
SIDEWALK REMOVAL = 18 SF
 SIDEWALK 4" = 25 SF
 DETECTABLE WARNING = 20 SF
 CCC&G = 57 FT
 PAVEMENT REMOVAL = 15 SQ YD
 LAND SCAPING = 13 SQ YD

NE QUADRANT



SIDEWALK REMOVAL = 11 SF
 SIDEWALK 4" = 36 SF
 DETECTABLE WARNING = 10 SF
 CCC&G = 34 FT
 PAVEMENT REMOVAL = 11 SQ YD
 LAND SCAPING = 19 SQ YD

SW QUADRANT

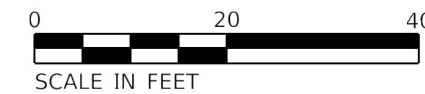


SIDEWALK 4" = 7 SF
 DETECTABLE WARNING = 10 SF
 CCC&G = 11 FT
 PAVEMENT REMOVAL = 2 SQ YD

SE QUADRANT

- CURB AND GUTTER REMOVAL
- SIDEWALK REMOVAL
- PAVEMENT REMOVAL
- DETECTABLE WARNING
- TURNING SPACE / LEVEL LANDING
15% CROSS-SLOPE BOTH DIRECTION
- SEEDING/FERTILIZER AREA
INCLUDED IN SW WORK

- NOTES:
- SEE HIGHWAY STANDARDS 424001 - 424031 FOR MAX SLOPES AND ADDITIONAL REQUIREMENTS.
 - SEE HIGHWAY STANDARD 606001 FOR CURB AND GUTTER REQUIREMENTS NEXT TO ADA RAMP.
 - ALL CROSS-SLOPES IN THE DIRECTION OF TRAVEL ARE AN ABSOLUTE MAXIMUM OF 2% LAYOUT SHOULD BE AT 1.5% TO ALLOW FOR ERROR WHILE REMAINING WITH THE MAXIMUM SLOPE.
 - SIDEWALK CURBS ARE SHOW ONLY AS REQUIRED BY FIELD CONDITIONS AND MAY BE OMITTED IF FOUND TO BE UNNECESSARY.
 - PEDESTRIAN PUSH BUTTON SIGN PAY ITEM TO BE INCIDENTAL TO THE PEDESTRIAN PUSH BUTTON PAY ITEM.



MODEL: Default
 FILE: \\miller-pw-bentley.com\PWD\DOT\Documents\DOT_Civil\as\Drawings_3\Project\10366660\CADD\10366660-114_PROPOSED.dwg

USER NAME = NOLASCOCJ	DESIGNED -	REVISED -
	DRAWN -	REVISED -
PLOT SCALE = 20.0000' / 1"	CHECKED -	REVISED -
PLOT DATE = 2/7/2022	DATE -	REVISED -

STATE OF ILLINOIS
DEPARTMENT OF TRANSPORTATION

LINCOLN AVENUE

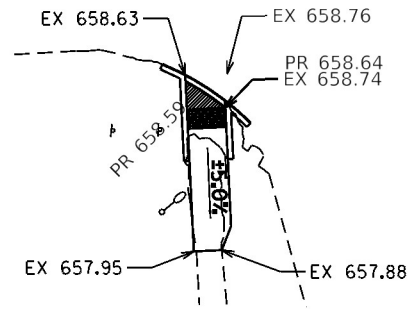
SCALE: SHEET OF SHEETS STA. TO STA.

F.A.S. RTE.	SECTION	COUNTY	TOTAL SHEETS	SHEET NO.
315	(121,122)R5-3	IRROQUOIS	33	28
CONTRACT NO. 66D60				
ILLINOIS FED. AID PROJECT				

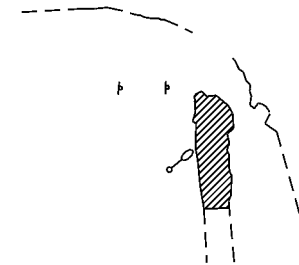


- DETECTABLE WARNING
- TURNING SPACE / LEVEL LANDING
15% CROSS-SLOPE BOTH DIRECTION
- SEEDING/FERTILIZER AREA
INCLUDED IN SW WORK

- CURB AND GUTTER REMOVAL
- SIDEWALK REMOVAL
- PAVEMENT REMOVAL



SIDEWALK REMOVAL = 5 SF
 SIDEWALK 4" = 8 SF
 DETECTABLE WARNING = 8 SF
 CCC&G = 11 FT



NW QUADRANT

NOTES:

1. SEE HIGHWAY STANDARDS 424001 - 424031 FOR MAX SLOPES AND ADDITIONAL REQUIREMENTS.
2. SEE HIGHWAY STANDARD 606001 FOR CURB AND GUTTER REQUIREMENTS NEXT TO ADA RAMP.
3. ALL CROSS-SLOPES IN THE DIRECTION OF TRAVEL ARE AN ABSOLUTE MAXIMUM OF 2% LAYOUT SHOULD BE AT 1.5% TO ALLOW FOR ERROR WHILE REMAINING WITH THE MAXIMUM SLOPE.
4. SIDEWALK CURBS ARE SHOW ONLY AS REQUIRED BY FIELD CONDITIONS AND MAY BE OMITTED IF FOUND TO BE UNNECESSARY.
5. PEDESTRIAN PUSH BUTTON SIGN PAY ITEM TO BE INCIDENTAL TO THE PDESTRIAN PUSH BUTTON PAY ITEM.



MODEL: Default
 FILE: Model - pw_bentley.com/PWIDOT/Drawings/DOIT_Civil/Std/Draw/3/Project/103366660/CADD/103366660-114-PROPOSED.dwg

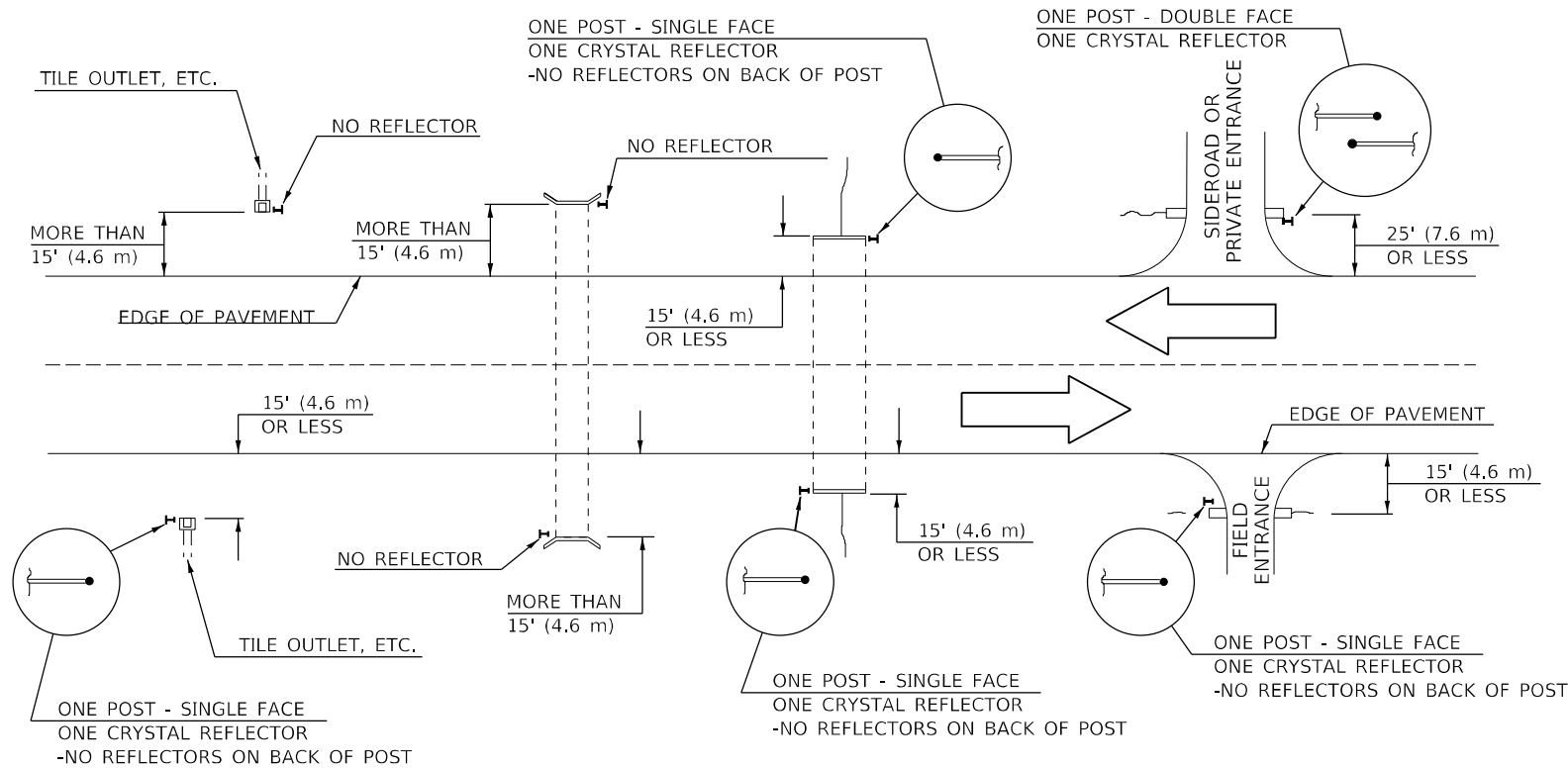
USER NAME = NOLASCOCJ	DESIGNED -	REVISED -
	DRAWN -	REVISED -
PLOT SCALE = 20.0000' / 1"	CHECKED -	REVISED -
PLOT DATE = 2/7/2022	DATE -	REVISED -

**STATE OF ILLINOIS
 DEPARTMENT OF TRANSPORTATION**

CHURCH AVENUE

SCALE: SHEET OF SHEETS STA. TO STA.

F.A.S RTE.	SECTION	COUNTY	TOTAL SHEETS	SHEET NO.
315	(121,122)R5-3	IROQUOIS	33	29
CONTRACT NO. 66D60			ILLINOIS FED. AID PROJECT	



IDENTIFICATION OF ROADSIDE HAZARDS FOR TWO-LANE ROADWAYS

BILL OF MATERIALS

DELINEATOR TYPE	SINGLE FACE	DOUBLE FACE	NO REFLECTOR	TOTAL DELINEATORS
SINGLE CRYSTAL	26		N/A	26
SINGLE CRYSTAL			TOTAL	26

NOTES

DELINEATORS FOR ROADSIDE HAZARDS SHALL ONLY BE PLACED AT LOCATIONS WHERE THERE IS NO GUARDRAIL, OR OTHER PERMANENT BARRIER, ON THE SAME SIDE OF ROAD AS THE HAZARD.

DELINEATORS FOR ROADSIDE HAZARDS SHALL ONLY BE PLACED AT LOCATIONS WHERE DELINEATORS ARE NOT IN PLACE ALONG THE EDGE OF SHOULDER.

EACH POST SHALL BE CONSIDERED AS ONE DELINEATOR FOR PAYMENT, REGARDLESS OF THE NUMBER OF DELINEATORS ATTACHED TO IT.

FOR ONE-WAY ROADWAYS THE APPLICATION SHALL BE SIMILAR WITH DELINEATORS PLACED ON THE TRAFFIC APPROACH SIDE OF HAZARDS AND OBJECTS. ONLY SINGLE FACE DELINEATORS WILL BE REQUIRED ON ONE-WAY ROADWAYS. CRYSTAL ON RIGHT SIDE, AMBER ON LEFT.

FOR OTHER DELINEATOR APPLICATIONS, REFER TO HIGHWAY STANDARD 635001.

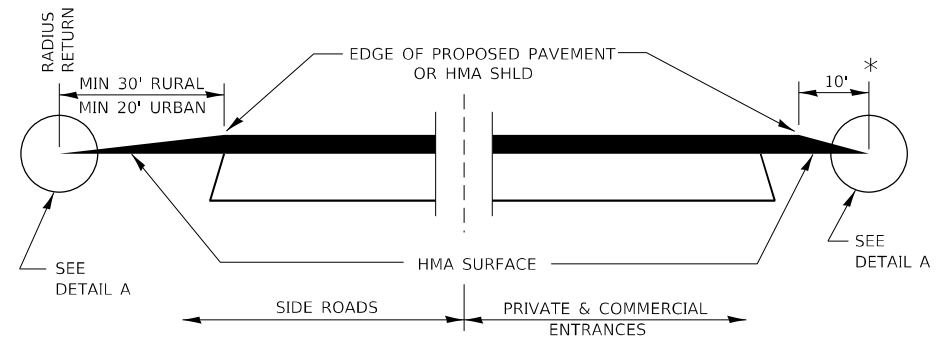
MODEL: Default
 FILE NAME: p:\project-aw-bee\paw.com\p\INDOT\Documents\DOT Office\Dir\dr. 3\Project\366666\366666-ct-detail.dgn

USER NAME = NOLASCOCJ	DESIGNED -	REVISED -
	DRAWN -	REVISED -
PLOT SCALE = 100,0000 ' / in.	CHECKED -	REVISED -
PLOT DATE = 2/7/2022	DATE -	REVISED -

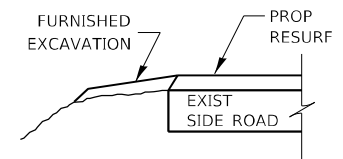
**STATE OF ILLINOIS
DEPARTMENT OF TRANSPORTATION**

SCALE:		SHEET OF SHEETS		STA.	TO STA.

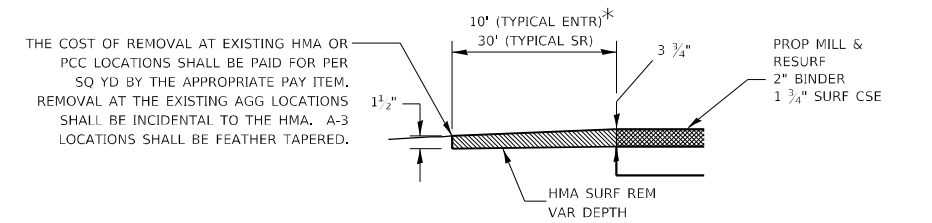
F.A.S. RTE.	SECTION	COUNTY	TOTAL SHEETS	SHEET NO.
315	(121,122)RS-3	IROQUOIS	33	30
CONTRACT NO. 66D60			ILLINOIS FED. AID PROJECT	



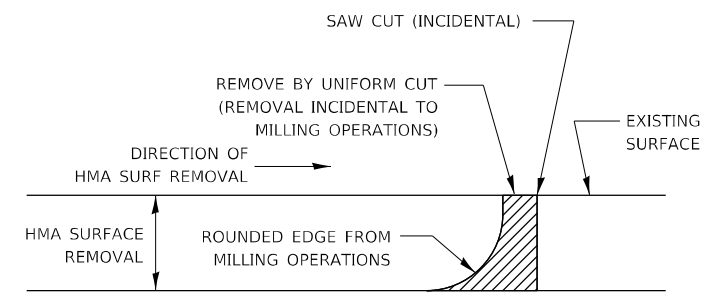
SECTION A-A
DETAILS AT ENTRANCES & SIDE ROADS



SECTION B-B

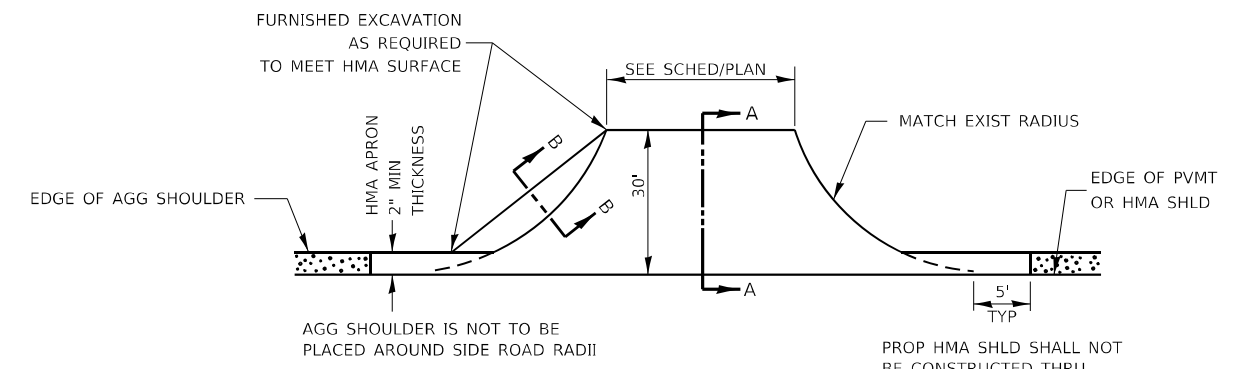


DETAIL A

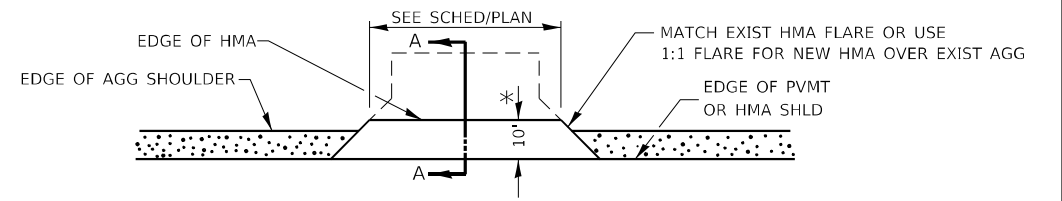


NOTE:
WHEN MILLING OPERATIONS PRODUCE A ROUNDED EDGE, THEN A SAW CUT SHALL BE USED TO MANUFACTURE A PERPENDICULAR EDGE AS SHOWN IN THE DETAIL. THE ENGINEER SHALL BE THE SOLE JUDGE CONCERNING THE USE OF THIS DETAIL.

HMA DETAIL AT BUTT JOINTS



PLAN AT SIDE ROADS



PLAN AT PRIVATE & COMMERCIAL ENTRANCES

(DO NOT RESURFACE FIELD ENTRANCES)

* PROPOSED HMA RESURFACING AT PUBLIC EDUCATIONAL FACILITY ENTRANCES SHALL BE EXTENDED TO THE RIGHT-OF-WAY LIMITS.

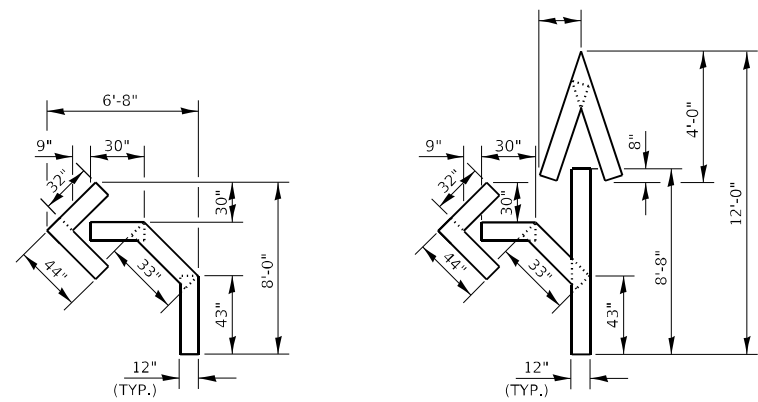
MODEL: Default
FILE: hma.dwg
PROJECT: \\dot-offices\dot\projects\10366960\10366960\10366960-10366960.dwg

USER NAME = NOLASCOCJ	DESIGNED -	REVISED -
	DRAWN -	REVISED -
PLOT SCALE = 100,0000' / in.	CHECKED -	REVISED -
PLOT DATE = 2/7/2022	DATE -	REVISED -

STATE OF ILLINOIS
DEPARTMENT OF TRANSPORTATION

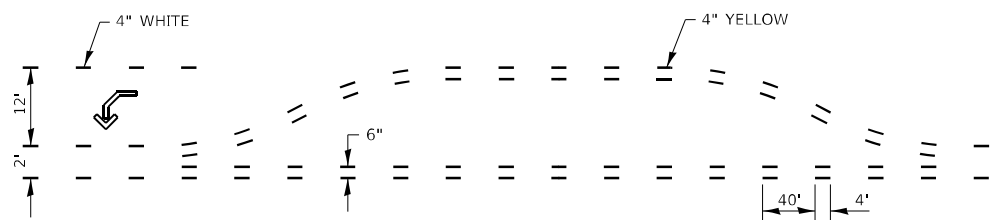
DETAILS	
SCALE:	SHEET OF SHEETS STA. TO STA.

F.A.S. RTE.	SECTION	COUNTY	TOTAL SHEETS	SHEET NO.
315	(121,122)RS-3	IROQUOIS	33	31
CONTRACT NO. 66D60			ILLINOIS FED. AID PROJECT	

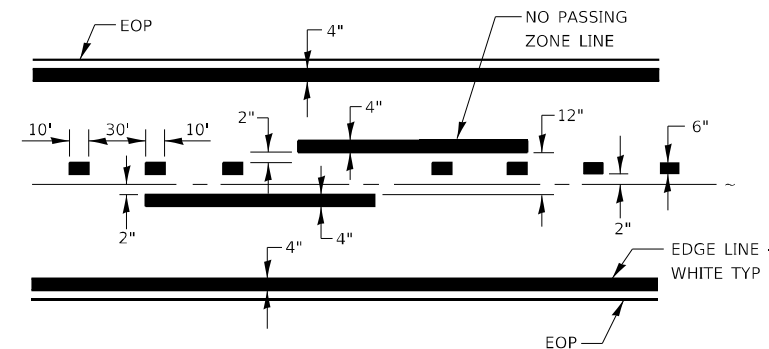


QUANTITY
12" LINE = 16 LIN FT
OR 4" LINE = 48 LIN FT

QUANTITY
12" LINE = 29 LIN FT
OR 4" LINE = 87 LIN FT

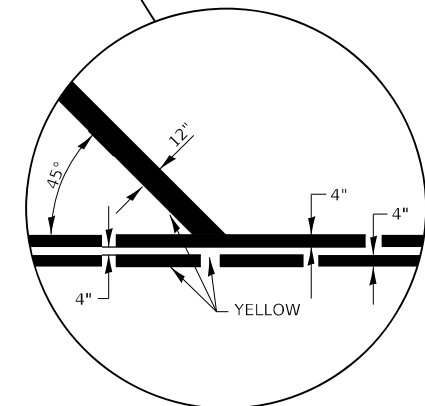
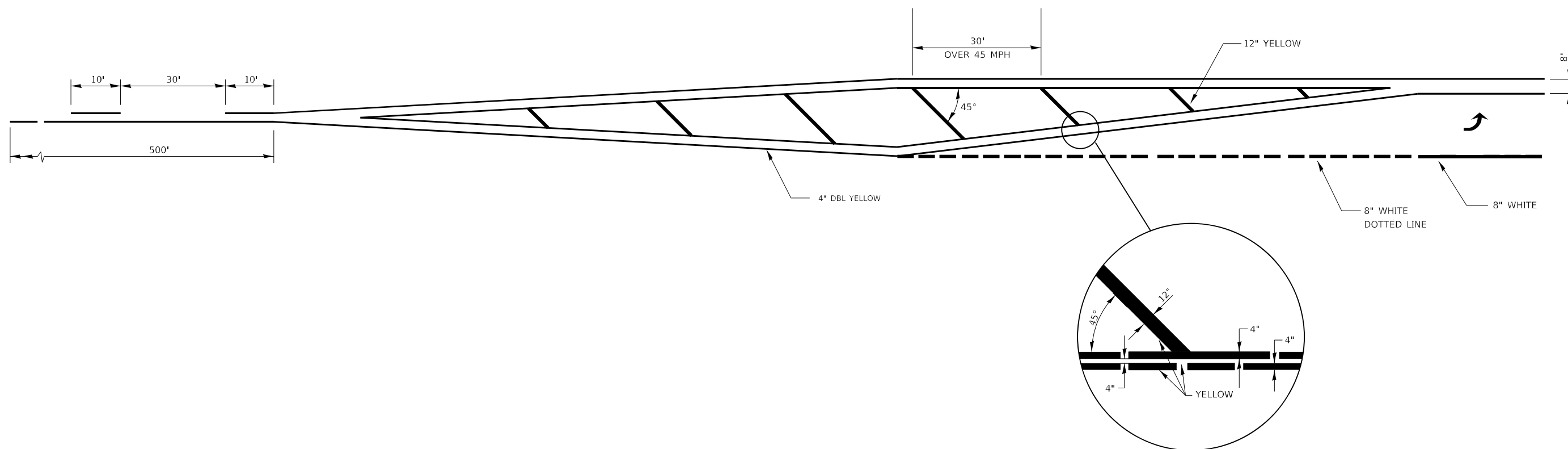


**SHORT-TERM PAVEMENT MARKING
FOR MEDIANS AND ARROWS**



CENTERLINE & NO PASSING
ZONE LINES - YELLOW

PAVEMENT MARKING



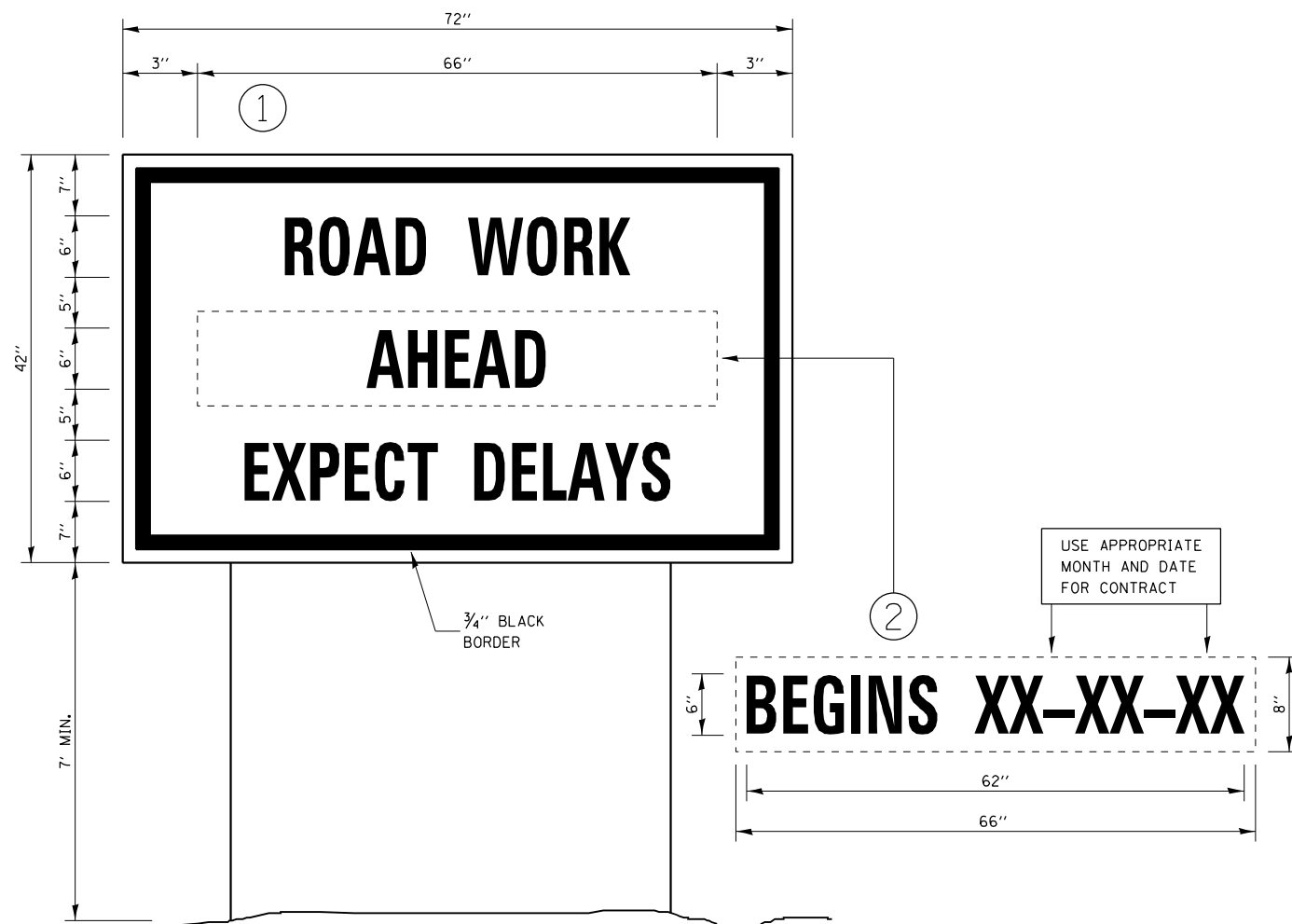
MODEL: Default
FILE: Mainfile.pxl
PROJECT: \Project\Documents\DOT Office\Dir\dir: \Project\3666960\CADD\3666960\3666960-01-01.dgn

USER NAME = NOLASCOCJ	DESIGNED -	REVISED -
DRAWN -	REVISED -	
PLOT SCALE = 100,0000' / in.	CHECKED -	REVISED -
PLOT DATE = 2/7/2022	DATE -	REVISED -

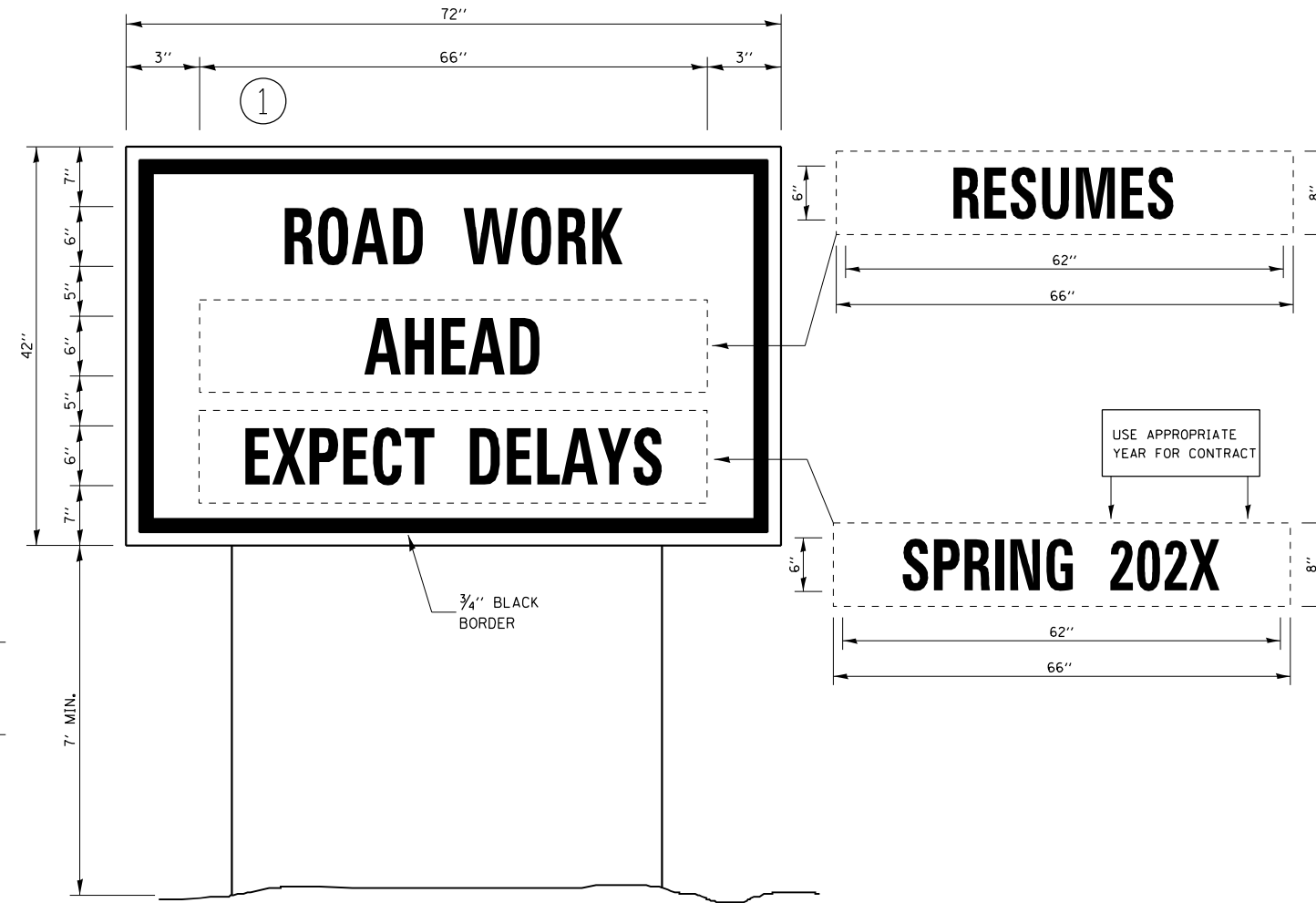
**STATE OF ILLINOIS
DEPARTMENT OF TRANSPORTATION**

DETAILS				
SCALE:	SHEET	OF	SHEETS	STA. TO STA.

F.A.S. RTE.	SECTION	COUNTY	TOTAL SHEETS	SHEET NO.
315	(121,122)RS-3	IROQUOIS	33	32
ILLINOIS FED. AID PROJECT			CONTRACT NO. 66D60	



TEMPORARY INFORMATION SIGNING



WINTER SHUT DOWN SIGNING

NOTES:

1. USE 6" D BLACK LETTERING ON FLOURESENT ORANGE BACKGROUND.
2. ERECT SIGNS AT LOCATIONS IN ADVANCE OF THE "ROAD CONSTRUCTION AHEAD" SIGNS AS DIRECTED BY THE ENGINEER.
3. ERECT SIGN ① WITH INSTALLED PANEL ② A MINIMUM OF ONE WEEK PRIOR TO THE START OF THE LANE CLOSURE.
4. REMOVE PANEL ② ON THAT DATE.
5. SEE SPECIAL PROVISION "TEMPORARY INFORMATION SIGNING" FOR ADDITIONAL INFORMATION.
6. WILL BE PAID FOR PER SQ FT AS "TEMPORARY INFORMATION SIGNING". EACH SIGN = 21 SQ FT AND THE DATE PANEL ② WILL NOT BE MEASURED SEPARATELY FOR PAYMENT.

MODEL: Default
 FILE: \\na11e1-pw-bentley.com\PW\DOT\Documents\DOT Office\District 3\Project\10366960\CADD\10366960-ct-detail.dgn

USER NAME = NOLASCOCJ	DESIGNED -	REVISED -
PLOT SCALE = 100,0000' / in.	DRAWN -	REVISED -
PLOT DATE = 2/7/2022	CHECKED -	REVISED -
	DATE -	REVISED -

**STATE OF ILLINOIS
DEPARTMENT OF TRANSPORTATION**

DETAILS			
SCALE:	SHEET	OF	SHEETS
	STA.	TO	STA.

F.A.S. RTE.	SECTION	COUNTY	TOTAL SHEETS	SHEET NO.
315	(121,122)RS-3	IROQUOIS	33	33
CONTRACT NO. 66D60			ILLINOIS FED. AID PROJECT	