

04-29-2022 LETTING ITEM 027

FOR LIST OF HIGHWAY STANDARDS, SEE SHEET NO. 2.

STATE OF ILLINOIS
DEPARTMENT OF TRANSPORTATION

F.A.P. RTE.	SECTION	COUNTY	TOTAL SHEETS	SHEET NO.
326	(108)RS-6	KENDALL	18	1
		ILLINOIS	CONTRACT NO. 66M41	

INDEX OF SHEETS

- 1 COVER SHEET
- 2 HIGHWAY STANDARDS, GENERAL NOTES & LEGEND
- 3-5 SUMMARY OF QUANTITIES
- 6-7 TYPICAL SECTIONS
- 8-9 SCHEDULES OF QUANTITIES
- 10-12 PLANS
- 13-15 PAVEMENT MARKING PLANS
- 16-18 SPECIAL DETAILS

**PROPOSED
HIGHWAY PLANS**

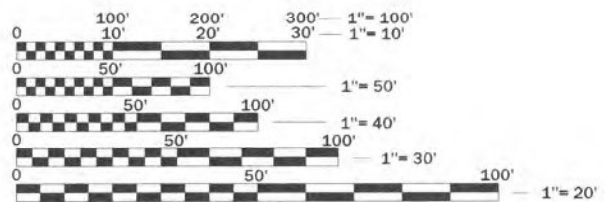
FAP ROUTE 326 (IL RTE 47)
SECTION (108)RS-6
PROJECT STATE
MILLING AND RESURFACING OF IL RTE 47
KENDALL COUNTY

D-93-041-22/C-93-064-22

C-93-064-22



FUNCTIONAL CLASSIFICATION
OTHER PRINCIPAL ARTERIAL
2019 ADT = 19800
P.U. = 88% S.U. = 7% M.U. = 5%
DESIGN SPEED = 55 MPH



FULL SIZE PLANS HAVE BEEN PREPARED USING STANDARD ENGINEERING SCALES. REDUCED SIZED PLANS WILL NOT CONFORM TO STANDARD SCALES. IN MAKING MEASUREMENTS ON REDUCED PLANS, THE ABOVE SCALES MAY BE USED.

J.U.L.I.E.
JOINT UTILITY LOCATION INFORMATION FOR EXCAVATION
1-800-892-0123
OR 811

PROJECT ENGINEER: JACOB OYIER, P.E.
UNIT CHIEF: STEPHANIE CARMIN
DISTRICT 3 NO. (815) 434-6131
CONTRACT NO. 66M41

END IMPROVEMENT
STA 83 + 37

BEGIN IMPROVEMENT
STA 10 + 48



BRISTOL TOWNSHIP
LOCATION MAP
NOT TO SCALE

GROSS LENGTH = 7289 FT. = 1.380 MILE
NET LENGTH = 7289 FT. = 1.380 MILE

Hutchinson Engineering, Inc.
Jacksonville - Moline - Peoria - Shorewood
Since 1945
2022 JOB #4845.10

2/1/22
DATE
LUNG D. ZELLER
082-084301
REGISTERED
PROFESSIONAL
ENGINEER OF
STATE OF ILLINOIS
SIGNATURE
ENGINEER'S SEAL

STATE OF ILLINOIS
DEPARTMENT OF TRANSPORTATION
SUBMITTED February 07, 2022
David Alford
REGIONAL ENGINEER
March 25, 2022
[Signature]
ENGINEER OF DESIGN AND ENVIRONMENT
March 25, 2022
Stephen M. Farris
DIRECTOR OF HIGHWAYS PROJECT IMPLEMENTATION

**PRINTED BY THE AUTHORITY
OF THE STATE OF ILLINOIS**

GENERAL NOTES

THE THICKNESS OF HMA SHOWN ON THE PLANS IS THE NOMINAL THICKNESS. DEVIATIONS FROM THE NOMINAL THICKNESS WILL BE PERMITTED WHEN SUCH DEVIATIONS OCCUR DUE TO IRREGULARITIES IN THE EXISTING SURFACE OR BASE ON WHICH THE HMA IS PLACED.

EXCEPT AS NOTED ON THE PLANS, PAVEMENT GRADES SHOWN ARE AT THE TOP OF PAVEMENT SURFACES.

THE ENGINEER WILL BE THE SOLE JUDGE CONCERNING CURING TIME FOR THE VARIOUS HMA LIFTS.

FOR STABILIZATION, ALL TYPE III BARRICADES SHALL REQUIRE A MINIMUM OF FOUR SAND BAGS PER BARRICADE.

SEEDING SHALL NOT BE PERMITTED AT ANY TIME WHEN THE GROUND IS FROZEN, WET, OR IN AN UNTILLABLE CONDITION. LOCATIONS TO BE SEEDED WILL BE DETERMINED BY THE ENGINEER.

ALL ELEVATIONS REFERRING TO U.S.G.S. MEAN SEA LEVEL DATUM.

ANY REFERENCE TO A STANDARD IN THESE PLANS SHALL BE INTERPRETED TO MEAN THE EDITION AS INDICATED BY THE SUBNUMBER SHOWN IN THE LIST OF STANDARDS OR THE COPY INCLUDED IN THESE PLANS.

MEMBERS OF J.U.L.I.E. KNOWN TO BE WITHIN THE LIMITS OF THE IMPROVEMENT ARE:

1.

NON-MEMBERS OF J.U.L.I.E. KNOWN TO BE WITHIN THE LIMITS ARE:

1. ILLINOIS DEPARTMENT OF TRANSPORTATION

THE CONTRACTOR SHALL CONTACT J.U.L.I.E. AT LEAST 48 HOURS PRIOR TO EXCAVATION TO DETERMINE WHICH UTILITIES ARE IN THE AREA.

ALL DAMAGE TO THE DEPARTMENT OWNED UNDERGROUND FACILITIES, CAUSED BY THE CONTRACTOR SHALL BE REPAIRED TO THE SATISFACTION OF THE DEPARTMENT AT THE CONTRACTOR'S EXPENSE. THIS SHALL INCLUDE ALL TEMPORARY REPAIRS REQUIRED TO KEEP THE FACILITY OPERATIONAL WHILE MATERIAL IS BEING OBTAINED TO MAKE PERMANENT REPAIRS.

BEFORE BEGINING ANY WORK, THE CONTRACTOR SHALL RETAIN AND RECORD FOR FUTURE REFERENCE, ALL EXISTING PAVEMENT MARKING LINES AND RAISED REFLECTIVE PAVEMENT MARKERS THAT CONFLICT WITH THE PROPOSED STRIPING AT THE COMPLETION OF THIS CONTRACT. EXACT LOCATIONS OF ALL PROPOSED PAVEMENT MARKINGS SHALL BE DIRECTED BY THE RESIDENT ENGINEER.

THE BITUMINOUS SURFACE, OF ALL MAILBOX TURNOUTS, PRIVATE ENTRANCES, COMMERCIAL ENTRANCES, AND SIDE ROADS SHALL BE MADE NEATLY, IN A WORKMANLIKE MANNER, AND SHALL ACCURATELY CONFORM TO THE SHAPES AND DIMENSIONS SHOWN ON THE PLAN DETAILS. IF REQUIRED BY THE ENGINEER, THE CONTRACTOR SHALL BE REQUIRED TO SAW CUT THE BITUMINOUS SURFACE TO CONFORM TO THE SHAPES AND DIMENSIONS SHOWN ON THE PLAN DETAILS. THIS WORK SHALL BE INCLUDED IN THE COST OF THE BITUMINOUS SURFACE.

WHERE SECTION OR SUBSECTION MONUMENTS ARE ENCOUNTERED, THE ENGINEER SHALL BE NOTIFIED BEFORE SUCH MONUMENTS ARE REMOVED. THE CONTRACTOR SHALL PROTECT AND CAREFULLY PRESERVE ALL MONUMENTS UNTIL AN AUTHORIZED SURVEYOR OR AGENT HAS WITNESSED OR OTHERWISE REFERENCED THEIR LOCATION. THE CONTRACTOR SHALL BE RESPONSIBLE FOR HAVING AN AUTHORIZED SURVEYOR REESTABLISH ANY SECTION OR SUBSECTION MONUMENTS DESTROYED BY HIS OPERATIONS.

ON EXISTING PAVEMENT WHICH MAY BE SUPERELEVATED, THE NEW BITUMINOUS PAVEMENT SHALL BE BUILT WITH THE SAME SUPERELEVATION UNLESS NEW SUPERELEVATION RATES ARE GIVEN ON THE PLANS.

THE FOLLOWING RATES OF APPLICATION HAVE BEEN ASSUMED IN CALCULATING PLAN QUANTITIES:

GRANULAR MATERIALS-----	2.05	TONS/CU YD		
BITUMINOUS MATERIALS PRIME COAT-----	0.05	LBS/SQ FT OR		
	0.025	LBS/SQ FT		
PRIME COAT FOR AGGREGATE BASES-----	0.25	TONS/SQ YD		
HOT-MIX ASPHALT SURFACE COURSE-----	112	LBS/SQ YD/INCH		
HOT-MIX ASPHALT BINDER COURSE-----	115	LBS/SQ YD/INCH		
LEVELING BINDER (MACHINE METHOD)-----	112	LBS/SQ YD/INCH		
NITROGEN FERTILIZER NUTRIENT-----	60	LBS/ACRE (SODDING)	90	LBS/ACRE (SEEDING)
PHOSPHORUS FERTILIZER NUTRIENT-----	60	LBS/ACRE (SODDING)	90	LBS/ACRE (SEEDING)
POTASSIUM FERTILIZER NUTRIENT-----	60	LBS/ACRE (SODDING)	90	LBS/ACRE (SEEDING)



COMMITMENTS

NONE.

HIGHWAY STANDARDS

000001-08	STANDARD SYMBOLS, ABBREVIATIONS AND PATTERNS
001006	DECIMAL OF AN INCH AND OF A FOOT
280001-07	TEMPORARY EROSION CONTROL SYSTEMS
630001-12	STEEL PLATE BEAM GUARDRAIL
630201-07	PCC/HMA STABILIZATION AT STEEL PLATE BEAM GUARDRAIL
630301-09	SHOULDER WIDENING FOR TYPE I (SPECIAL) GUARDRAIL TERMINALS
701001-02	OFF-RD OPERATIONS, 2L, 2W, MORE THAN 15' AWAY
701006-05	OFF-RD OPERATIONS, 2L, 2W, 15' TO 24" FROM PAVEMENT EDGE
701011-04	OFF-RD MOVING OPERATIONS, 2L, 2W, DAY ONLY
701201-05	LANE CLOSURE, 2L, 2W, DAY ONLY, FOR SPEEDS ≥ 45 MPH
701206-05	LANE CLOSURE, 2L, 2W, NIGHT ONLY, FOR SPEEDS ≥ 45 MPH
701301-04	LANE CLOSURE, 2L, 2W, SHORT TIME OPERATIONS
701306-04	LANE CLOSURE, 2L, 2W, SLOW MOVING OPERATIONS DAY ONLY, FOR SPEEDS ≥ 45 MPH
701311-03	LANE CLOSURE, 2L, 2W, MOVING OPERATIONS - DAY ONLY
701501-06	URBAN LANE CLOSURE, 2L, 2W, UNDIVIDED
701901-08	TRAFFIC CONTROL DEVICES
780001-05	TYPICAL PAVEMENT MARKINGS
781001-04	TYPICAL APPLICATIONS RAISED REFLECTIVE PAVEMENT MARKERS

LEGEND

	HOT-MIX ASPHALT BUTT JOINT
	PROPOSED DITCH FLOW
TBR	TO BE REMOVED

STATE OF ILLINOIS
DEPARTMENT OF TRANSPORTATION
DISTRICT THREE
AS BUILT INFORMATION

STATE OF ILLINOIS
DEPARTMENT OF TRANSPORTATION
DISTRICT THREE

SUPERVISING CONSTRUCTION FIELD ENGINEER

PREPARED BY: _____
DISTRICT STUDIES & PLANS ENGINEER

RESIDENT ENGINEER / TECHNICIAN

DATE: _____

START & END DATES
OF CONSTRUCTION:

EXAMINED BY: _____
DISTRICT CONSTRUCTION ENGINEER

INSPECTORS:

DISTRICT MATERIALS ENGINEER

DISTRICT OPERATIONS ENGINEER

STATE OF ILLINOIS
DEPARTMENT OF TRANSPORTATION

FAP ROUTE 326 (IL RTE 47)
HIGHWAY STANDARDS, GENERAL NOTES, INDEX & LEGEND

F.A.P. RTE.	SECTION	COUNTY	TOTAL SHEETS	SHEET NO.
326	(108)RS-6	KENDALL	18	2
CONTRACT NO. 66M41				
ILLINOIS		FED. AID PROJECT		

SCALE: N/A SHEET 1 OF 1 SHEETS STA. N/A TO STA. N/A

USER NAME = BDeCraene	DESIGNED - LDZ	REVISED -
	DRAWN - RMD	REVISED -
PLOT SCALE = 2,0000' / in.	CHECKED - WLP	REVISED -
PLOT DATE = 2/1/2022	DATE - 1/4/2022	REVISED -

CODE NO.	ITEM	UNIT	TOTAL QUANTITY	CONSTR. CODE
				100% STATE
				ROADWAY
				0004
RURAL				
40600290	BITUMINOUS MATERIALS (TACK COAT)	POUND	12611	12611
40600370	LONGITUDINAL JOINT SEALANT	FOOT	9742	9742
40600982	HOT-MIX ASPHALT SURFACE REMOVAL - BUTT JOINT	SQ YD	548	548
40604164	POLYMERIZED HOT-MIX ASPHALT SURFACE COURSE, 1L-9.5, MIX "D", N90	TON	2730	2730
40800050	INCIDENTAL HOT-MIX ASPHALT SURFACING	TON	58	58
44000158	HOT-MIX ASPHALT SURFACE REMOVAL, 2 1/4"	SQ YD	27303	27303
44201747	CLASS D PATCHES, TYPE IV, 8 INCH	SQ YD	422	422
48102100	AGGREGATE WEDGE SHOULDER, TYPE B	TON	906	906
67100100	MOBILIZATION	L SUM	1	1
70100455	TRAFFIC CONTROL AND PROTECTION, STANDARD 701206	L SUM	1	1
70100460	TRAFFIC CONTROL AND PROTECTION, STANDARD 701306	L SUM	1	1
70102620	TRAFFIC CONTROL AND PROTECTION, STANDARD 701501	L SUM	1	1
70200100	NIGHTTIME WORK ZONE LIGHTING	L SUM	1	1
70300100	SHORT TERM PAVEMENT MARKING	FOOT	3700	3700
70300150	SHORT TERM PAVEMENT MARKING REMOVAL	SQ FT	1233	1233

MODEL Path: \\s001\...
 FILE NAME: V:\BAS\10 - IL 47 Resurfacing_P\1\CADD\CADD_Sheets\66M41-Sub-S001.dgn

Hutchison Engineering, Inc.
 Jacksonville Moline Peoria Shorewood
 Since 1945

USER NAME = BDeCraene	DESIGNED - LDZ	REVISED -
	DRAWN - RMD	REVISED -
PLOT SCALE = 100,0000' / in.	CHECKED - WLP	REVISED -
PLOT DATE = 2/1/2022	DATE - 1/4/2022	REVISED -

**STATE OF ILLINOIS
 DEPARTMENT OF TRANSPORTATION**

**FAP ROUTE 326 (IL RTE 47)
 SUMMARY OF QUANTITIES**

SCALE: N/A SHEET 1 OF 3 SHEETS STA. N/A TO STA. N/A

F.A.P. RTE.	SECTION	COUNTY	TOTAL SHEETS	SHEET NO.
326	(108)RS-6	KENDALL	18	3
CONTRACT NO. 66M41				
ILLINOIS FED. AID PROJECT				

CONSTR. CODE
100% STATE

CODE NO.	ITEM	UNIT	TOTAL QUANTITY	ROADWAY 0004 RURAL
* 78000100	THERMOPLASTIC PAVEMENT MARKING - LETTERS AND SYMBOLS	SQ FT	187.2	187.2
* 78000200	THERMOPLASTIC PAVEMENT MARKING - LINE 4"	FOOT	24444	24444
* 78000400	THERMOPLASTIC PAVEMENT MARKING - LINE 6"	FOOT	1306	1306
* 78000500	THERMOPLASTIC PAVEMENT MARKING - LINE 8"	FOOT	842	842
* 78000600	THERMOPLASTIC PAVEMENT MARKING - LINE 12"	FOOT	393	393
* 78000650	THERMOPLASTIC PAVEMENT MARKING - LINE 24"	FOOT	99	99
* 78011000	GROOVING FOR RECESSED PAVEMENT MARKING, LETTERS AND SYMBOLS	SQ FT	187.2	187.2
* 78011025	GROOVING FOR RECESSED PAVEMENT MARKING 5"	FOOT	24319	24319
* 78011035	GROOVING FOR RECESSED PAVEMENT MARKING 7"	FOOT	1100	1100
* 78011045	GROOVING FOR RECESSED PAVEMENT MARKING 9"	FOOT	842	842
* 78011125	GROOVING FOR RECESSED PAVEMENT MARKING 25"	FOOT	75	75
* 78100100	RAISED REFLECTIVE PAVEMENT MARKER	EACH	218	218
78300200	RAISED REFLECTIVE PAVEMENT MARKER REMOVAL	EACH	35	35
* 85000200	MAINTENANCE OF EXISTING TRAFFIC SIGNAL INSTALLATION	EACH	1	1

*= SPECIALTY ITEM

MODEL: Default
FILE NAME: V:\326\10 - IL 47 Resurfacing PE\ICADD\CADD Sheets\66M41-2hr-500-2.dgn

Hutchison Engineering, Inc.
Jacksonville Moline Peoria Shorewood
Since 1945

USER NAME = BDeCraene	DESIGNED - LDZ	REVISED -
	DRAWN - RMD	REVISED -
PLOT SCALE = 100,0000' / in.	CHECKED - WLP	REVISED -
PLOT DATE = 2/1/2022	DATE - 1/4/2022	REVISED -

STATE OF ILLINOIS
DEPARTMENT OF TRANSPORTATION

FAP ROUTE 326 (IL RTE 47)
SUMMARY OF QUANTITIES

SCALE: N/A SHEET 2 OF 3 SHEETS STA. N/A TO STA. N/A

F.A.P. RTE.	SECTION	COUNTY	TOTAL SHEETS	SHEET NO.
326	(108)RS-6	KENDALL	18	4
CONTRACT NO. 66M41				
ILLINOIS FED. AID PROJECT				

REV. 2/23/22 REV. 2/22/22

MODEL: Default
 FILE NAME: V:\1815.10 - IL 47 Resurfacing, PE 11\CADD\CADD Sheets\66M1-sht-500-3.dgn

Hutchison Engineering, Inc.
 Jacksonville Moline Peoria Shorewood
 Since 1945

USER NAME = BDeCrane	DESIGNED - LDZ	REVISED -
	DRAWN - RMD	REVISED -
PLOT SCALE = 100.0000' / in.	CHECKED - WLP	REVISED -
PLOT DATE = 2/1/2022	DATE - 1/4/2022	REVISED -

**STATE OF ILLINOIS
 DEPARTMENT OF TRANSPORTATION**

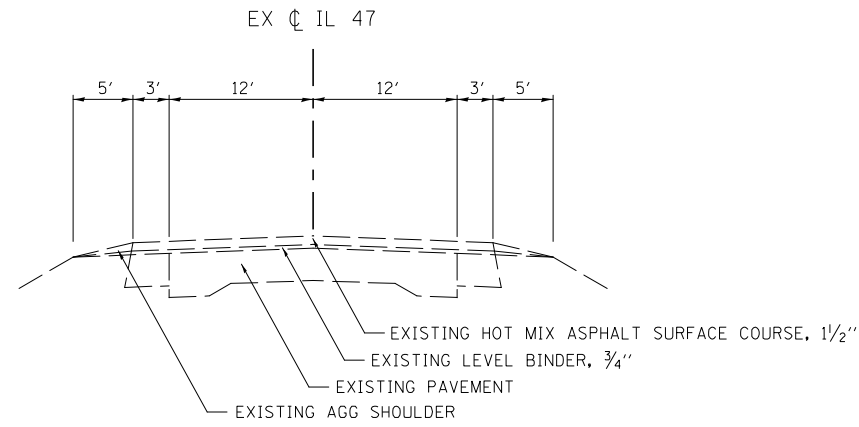
**FAP ROUTE 326 (IL RTE 47)
 SUMMARY OF QUANTITIES**

SCALE: N/A SHEET 3 OF 3 SHEETS STA. N/A TO STA. N/A

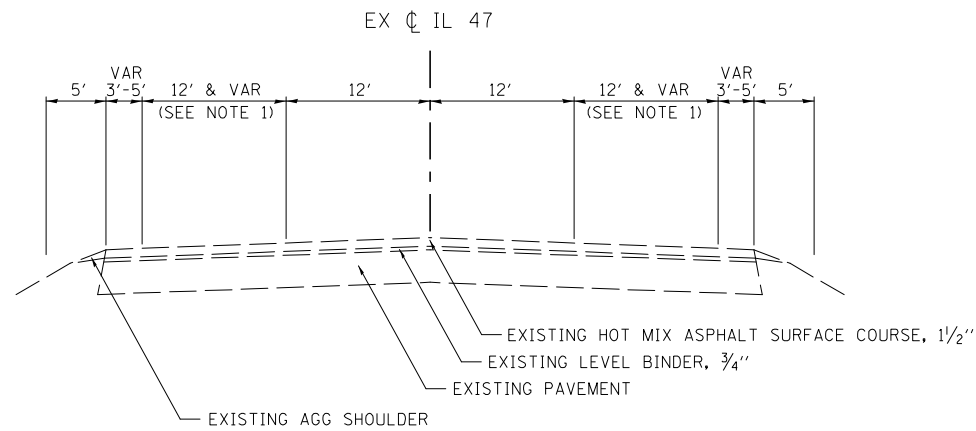
F.A.P. RTE.	SECTION	COUNTY	TOTAL SHEETS	SHEET NO.
326	(108)RS-6	KENDALL	18	5
ILLINOIS FED. AID PROJECT			CONTRACT NO. 66M41	

CONSTR. CODE
100% STATE

CODE NO.	ITEM	UNIT	TOTAL QUANTITY	ROADWAY
				0004 RURAL
* 89502375	REMOVE EXISTING TRAFFIC SIGNAL EQUIPMENT	EACH	1	1
* X1400215	REMOTE CONTROLLED VIDEO SYSTEM	EACH	1	1
X4401198	HOT-MIX ASPHALT SURFACE REMOVAL, VARIABLE DEPTH	SQ YD	581	581
* X8950114	MODIFY EXISTING CONTROLLER AND CABINET	EACH	1	1
Z0030850	TEMPORARY INFORMATION SIGNING	SQ FT	42	42
* Z0033072	VIDEO VEHICLE DETECTION SYSTEM	EACH	1	1
Z0034105	MATERIAL TRANSFER DEVICE	TON	2730	2730



EXISTING TYPICAL SECTION
FAP ROUTE 326 (IL RTE 47)
 STA 10+48.2 TO STA 17+00.0
 STA 30+16.46 TO STA 78+35.47



EXISTING TYPICAL SECTION
FAP ROUTE 326 (IL RTE 47)
 STA 17+00.0 TO STA 30+16.46
 STA 78+35.47 TO STA 83+37.13

NOTES:

- VARIES FROM 0' AT STA 20+20.0 TO 12' AT STA 21+52.2
 VARIES FROM 12' AT STA 25+69.7 TO 0' AT STA 27+62.05

MODEL: D:\p1\h
 FILE NAME: V:\326\10 - IL 47 Resurfacing_P1\10CADD\CADD_Sheets\66M41-ehz\typical1.dgn

Hutchison Engineering, Inc.
 Jacksonville - Moline - Peoria - Shorewood
 Since 1945

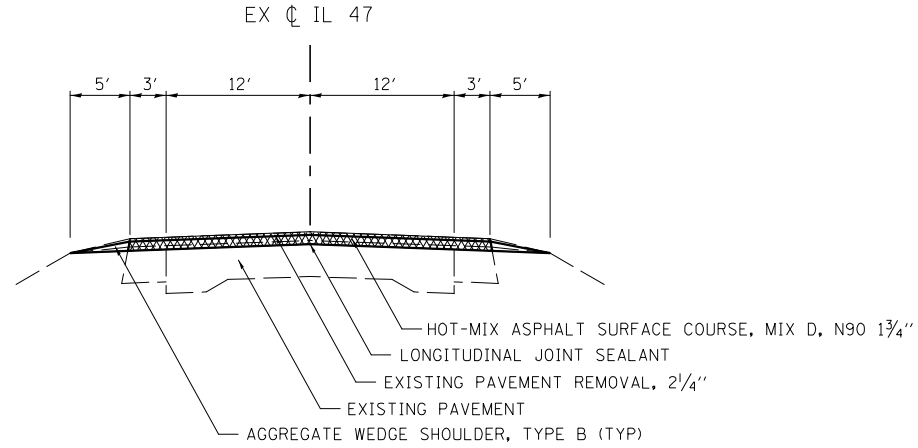
USER NAME = BDeCraene	DESIGNED - LDZ	REVISED -
	DRAWN - RMD	REVISED -
PLOT SCALE = 16,0000 * / in.	CHECKED - WLP	REVISED -
PLOT DATE = 2/1/2022	DATE - 1/4/2022	REVISED -

STATE OF ILLINOIS
DEPARTMENT OF TRANSPORTATION

FAP ROUTE 326 (IL RTE 47)
EXISTING TYPICAL SECTIONS

SCALE: N/A SHEET 1 OF 1 SHEETS STA. N/A TO STA. N/A

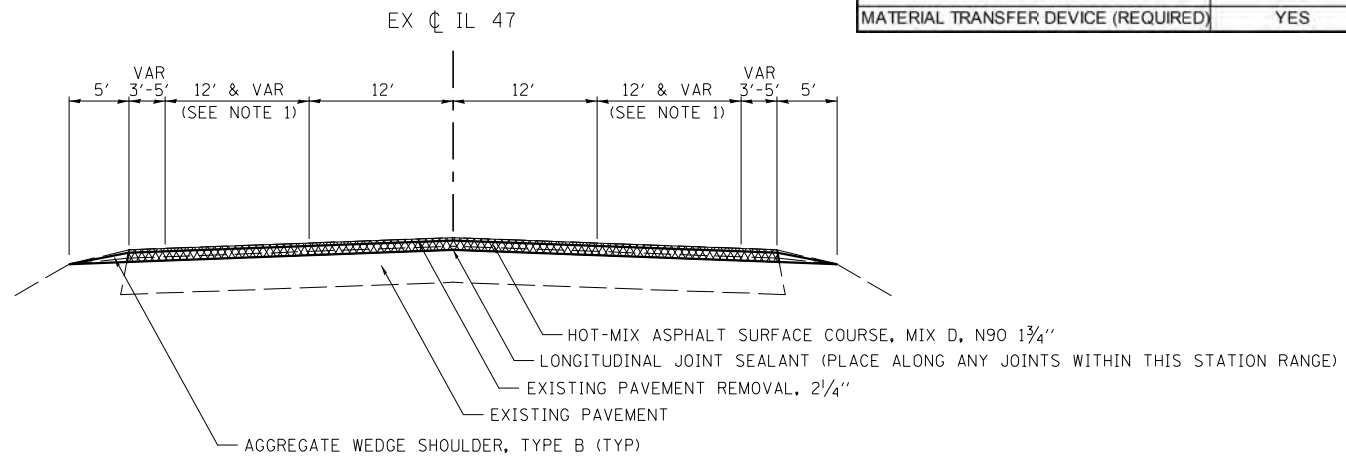
F.A.P. RTE.	SECTION	COUNTY	TOTAL SHEETS	SHEET NO.
326	(108)RS-6	KENDALL	18	6
CONTRACT NO. 66M41				
ILLINOIS			FED. AID PROJECT	



**PROPOSED TYPICAL SECTION
FAP ROUTE 326 (IL RTE 47)**

STA 10+48.2 TO STA 17+00.0
STA 30+16.46 TO STA 78+35.47

HMA MIXTURE REQUIREMENT TABLE				
LOCATIONS:	ENTIRE PROJECT	ENTIRE PROJECT	GALENA RD	ENTIRE PROJECT
MIXTURE USE(S):	HMA SURFACE COURSE	CLASS D PATCHES	INCIDENTAL HMA	INCIDENTAL HMA
BINDER GRADE (PG):	SBS PG 70-28	PG 64-22	SBS PG 70-28	PG 64-22
DESIGN AIR VOIDS:	4.0% @ N90	4.0% @ N90	4.0% @ N90	4.0% @ N50
MIXTURE COMPOSITION: (MIXTURE GRADATION)	IL-9.5	IL-19.0	IL-9.5	IL-9.5
FRICTION AGGREGATE:	MIXTURE D		MIXTURE D	MIXTURE C
MIXTURE WEIGHT:	112.0 LB/SY/IN	112.0 LB/SY/IN	112.0 LB/SY/IN	112.0 LB/SY/IN
QUALITY MANAGEMENT PROGRAM:	QCP	QC/QA	QC/QA	QC/QA
SUBLOT SIZE:	1000 TONS	N/A	N/A	N/A
DENSITY TEST METHOD:	CORES	CORES	SATISFACTION OF THE ENGINEER	SATISFACTION OF THE ENGINEER
MATERIAL TRANSFER DEVICE (REQUIRED)	YES	NO	NO	NO



**PROPOSED TYPICAL SECTION
FAP ROUTE 326 (IL RTE 47)**

STA 17+00.0 TO STA 30+16.46
STA 78+35.47 TO STA 83+37.13

NOTES:

- VARIES FROM 0' AT STA 20+20.0 TO 12' AT STA 21+52.2
VARIES FROM 12' AT STA 25+69.7 TO 0' AT STA 27+62.05

MODEL: Default
FILE NAME: V:\9345.10 - IL 47 Resurfacing_P6\11\CADD\CADD_Sheets\66M41-ehc-hydrcl2.dgn

Hutchison Engineering, Inc.
Jacksonville - Moline - Peoria - Shorewood
Since 1945

USER NAME = BDeCraene	DESIGNED - LDZ	REVISED -
	DRAWN - RMD	REVISED -
PLOT SCALE = 16,0000 * / in.	CHECKED - WLP	REVISED -
PLOT DATE = 2/1/2022	DATE - 1/4/2022	REVISED -

STATE OF ILLINOIS
DEPARTMENT OF TRANSPORTATION

FAP ROUTE 326 (IL RTE 47)
PROPOSED TYPICAL SECTIONS

SCALE: N/A SHEET 1 OF 1 SHEETS STA. N/A TO STA. N/A

F.A.P. RTE.	SECTION	COUNTY	TOTAL SHEETS	SHEET NO.
326	(108)RS-6	KENDALL	18	7
CONTRACT NO. 66M41				
ILLINOIS			FED. AID PROJECT	

PAVEMENT						
LOCATION		BITUMINOUS MATERIALS (TACK COAT)	POLYMERIZED HOT-MIX ASPHALT SURFACE COURSE, IL-9.5, MIX "D", N90	1 3/4" INCIDENTAL HOT-MIX ASPHALT SURFACING (IL-9.5, MIX "D", N90)	AGGREGATE WEDGE SHOULDER, TYPE B	LONGITUDINAL JOINT SEALANT
STATION	TO STATION	POUND	TON	TON	TON	FOOT
IL 47						
10+48.23	TO 20+27.13	1612	351		124	979
20+27.13	TO 27+16.13	1819	396		75	2067
27+16.13	TO 78+00.00	7953	1732		639	5084
78+00.00	TO 83+37.17	1150	251		68	1612
GALENA ROAD				41		
TOTAL		12534	2730	41	906	9742

ENTRANCES					
LOCATION			BITUMINOUS MATERIALS (TACK COAT)	1 3/4" INCIDENTAL HOT-MIX ASPHALT SURFACING (IL-9.5, MIX "C", N50)	HOT-MIX ASPHALT SURFACE REMOVAL, VARIABLE DEPTH
STATION	SIDE	TYPE	POUND	TON	SQ YD
IL 47					
53+08.8	RT	PE	77	17	170
TOTAL			77	17	170

HOT-MIX ASPHALT SURFACE REMOVAL				
LOCATION			HOT-MIX ASPHALT SURFACE REMOVAL, 2 1/4"	HOT-MIX ASPHALT SURFACE REMOVAL, VARIABLE DEPTH
STATION	TO STATION	STATION	SQ YD	SQ YD
IL 47				
11+08	TO 20+27		3376	
20+27	TO 27+16		4041	
27+16	TO 78+00		17672	
78+00	TO 82+77		2214	
GALENA ROAD				411
TOTAL			27303	411

HOT-MIX ASPHALT SURFACE REMOVAL - BUTT JOINT			
LOCATION			AREA
STATION	TO STATION	STATION	SQ YD
IL 47			
10+48	TO 11+08		206
82+77	TO 83+37		342
TOTAL			548

CLASS D PATCHES		
STATION +/-	SIDE	TYPE IV 8 INCH SQ YD
IL 47		
23+11.8	34.9' LT	154
23+41.6	0.3' RT	150
25+37.5	12.0' LT	34
78+25.1	7.5' RT	84
TOTAL		422

MODEL: Default
 FILE NAME: 66M41_0 - IL 47 Resurfacing PE_ILCADDD\CADD_Sheets\66M41_ehtr-schedulr-1.dgn

Hutchison Engineering, Inc.
 Jacksonville Moline Peoria Shorewood
 Since 1945

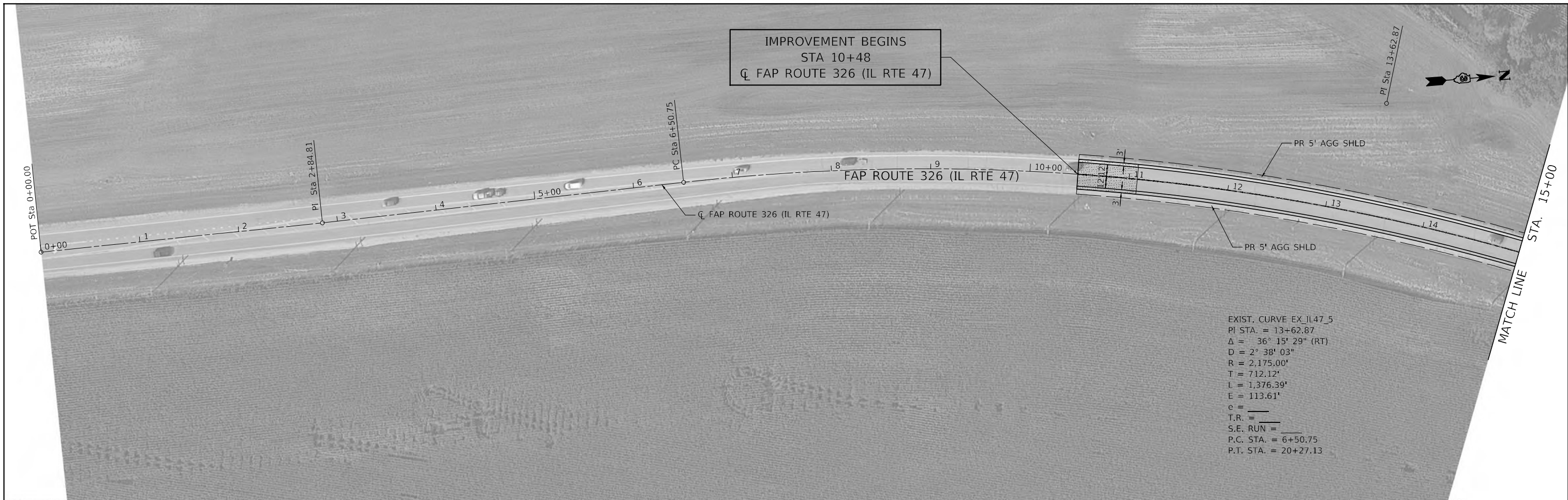
USER NAME = BDeCraene	DESIGNED - LDZ	REVISED -
PLOT SCALE = 100,0000' / in.	DRAWN - RMD	REVISED -
PLOT DATE = 2/1/2022	CHECKED - WLP	REVISED -
	DATE - 1/4/2022	REVISED -

STATE OF ILLINOIS
 DEPARTMENT OF TRANSPORTATION

FAP ROUTE 326 (IL RTE 47)
 SCHEDULE OF QUANTITIES

SCALE: N/A SHEET 1 OF 2 SHEETS STA. N/A TO STA. N/A

F.A.P. RTE. 326	SECTION (108)RS-6	COUNTY KENDALL	TOTAL SHEETS 18	SHEET NO. 8
CONTRACT NO. 66M41				
ILLINOIS FED. AID PROJECT				



MODEL Default
 FILE NAME: \\sbs110 - il 47 Resurfacing_PR_ILCADDCADD_Sheets\66M41-shr-pla-1.dgn

Hutchinson Engineering, Inc.
 Jacksonville Moline Peoria Shorewood
 Since 1945

USER NAME = BDeCraene	DESIGNED -	REVISED -
PLOT SCALE = 100,000' / in.	DRAWN -	REVISED -
PLOT DATE = 2/1/2022	CHECKED -	REVISED -
	DATE -	REVISED -

STATE OF ILLINOIS
DEPARTMENT OF TRANSPORTATION

FAP ROUTE 326 (IL RTE 47)
PLAN
 SCALE: 1"=50'
 SHEET 1 OF 3 SHEETS STA. 0+00.00 TO STA. 30+00.00

F.A.P. RTE.	SECTION	COUNTY	TOTAL SHEETS	SHEET NO.
326	(108)RS-6	KENDALL	18	10
CONTRACT NO. 66M41				

ILLINOIS FED. AID PROJECT



MODEL: Default
 FILE NAME: V:\B45.10 - IL 47 Resurfacing_P66M41\CADD\CADD_Sheets\66M41-2hr-pln2.dgn

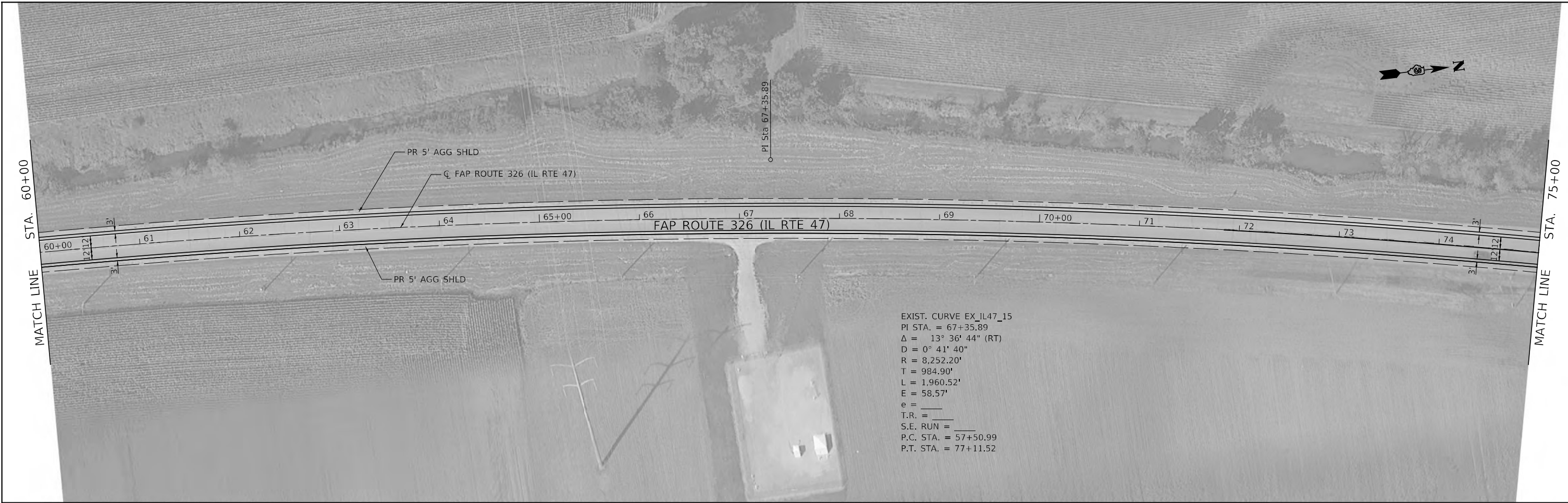
Hutchinson Engineering, Inc.
 Jacksonville Moline Peoria Shorewood
 Since 1945

USER NAME = BDeCraene	DESIGNED -	REVISED -
PLOT SCALE = 100,0000' / in.	DRAWN -	REVISED -
PLOT DATE = 2/1/2022	CHECKED -	REVISED -
	DATE -	REVISED -

STATE OF ILLINOIS
DEPARTMENT OF TRANSPORTATION

FAP ROUTE 326 (IL RTE 47)
PLAN
 SCALE: 1"=50' SHEET 2 OF 3 SHEETS STA. 30+00.00 TO STA. 60+00.00

F.A.P. RTE.	SECTION	COUNTY	TOTAL SHEETS	SHEET NO.
326	(108)RS-6	KENDALL	18	11
CONTRACT NO. 66M41				
ILLINOIS FED. AID PROJECT				



MODEL: D:\p1\h\h
 FILE NAME: V:\B45.10 - IL 47 Resurfacing_P1\ICADD\CADD_Sheets\66M41-eh-rplb-3.dgn

Hutchinson Engineering, Inc.
 Jacksonville Moline Peoria Shorewood
 Since 1945

USER NAME = BDeCraene	DESIGNED -	REVISED -
DRAWN -	REVISED -	
PLOT SCALE = 100,000' / in.	CHECKED -	REVISED -
PLOT DATE = 2/1/2022	DATE -	REVISED -

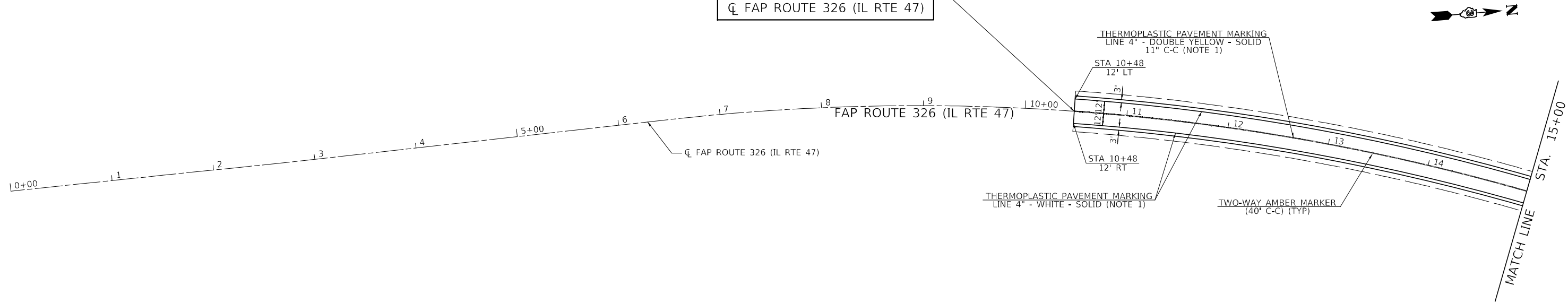
STATE OF ILLINOIS
DEPARTMENT OF TRANSPORTATION

FAP ROUTE 326 (IL RTE 47)
PLAN

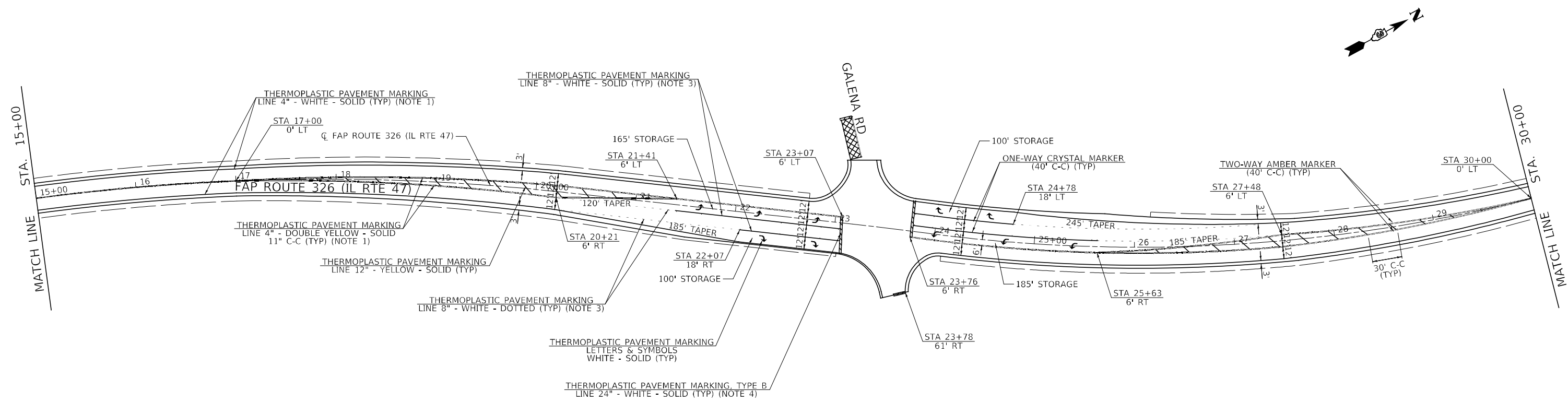
SCALE: 1"=50' SHEET 3 OF 3 SHEETS STA. 60+00.00 TO STA. 84+91.65

F.A.P. RTE.	SECTION	COUNTY	TOTAL SHEETS	SHEET NO.
326	(108)RS-6	KENDALL	18	12
CONTRACT NO. 66M41				
ILLINOIS FED. AID PROJECT				

IMPROVEMENT BEGINS
 STA 10+48
 ☐ FAP ROUTE 326 (IL RTE 47)



- NOTES:
1. GROOVING FOR RECESSED PAVEMENT MARKING, 5"
 2. GROOVING FOR RECESSED PAVEMENT MARKING, 7"
 3. GROOVING FOR RECESSED PAVEMENT MARKING, 9"
 4. GROOVING FOR RECESSED PAVEMENT MARKING, 25"



MODEL: D:\p1\h\n\...
 FILE NAME: V:\B045.10 - IL 47 Resurfacing_Plan\CAD\CADD\CADD_Sheets\66M41-shr-pmk-1.dgn

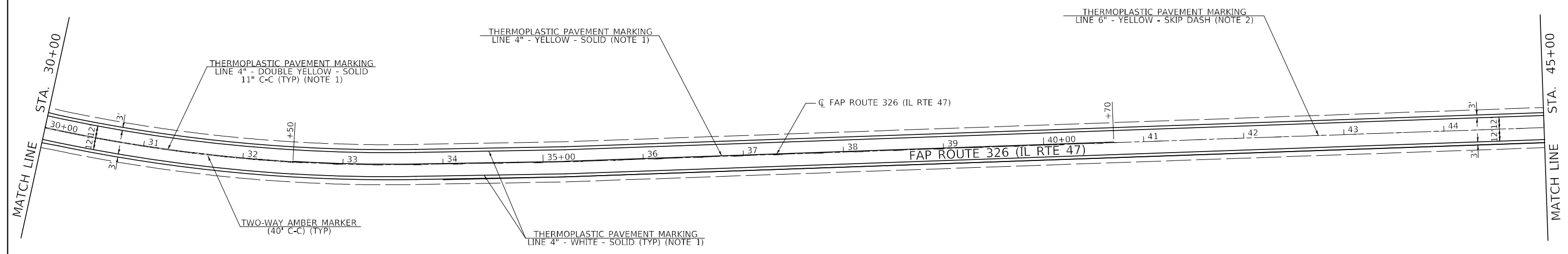
Hutchinson Engineering, Inc.
 Jacksonville Moline Peoria Shorewood
 Since 1945

USER NAME = BDeCraene	DESIGNED -	REVISED -
PLOT SCALE = 100,0000' / in.	DRAWN -	REVISED -
PLOT DATE = 2/1/2022	CHECKED -	REVISED -
	DATE -	REVISED -

**STATE OF ILLINOIS
 DEPARTMENT OF TRANSPORTATION**

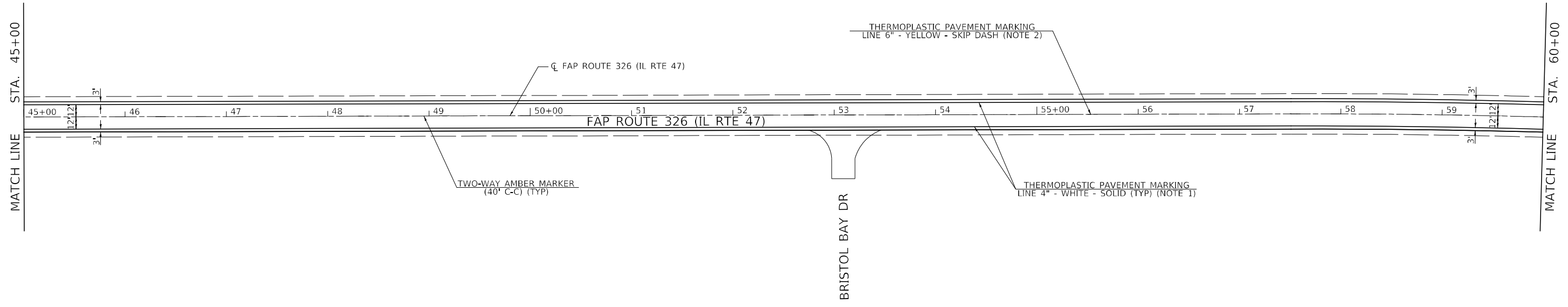
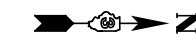
**FAP ROUTE 326 (IL RTE 47)
 PAVEMENT MARKING PLAN**
 SCALE: 1"=50' SHEET 1 OF 3 SHEETS STA. 0+00.00 TO STA. 30+00.00

F.A.P. RTE.	SECTION	COUNTY	TOTAL SHEETS	SHEET NO.
326	(108)RS-6	KENDALL	18	13
CONTRACT NO. 66M41				
ILLINOIS FED. AID PROJECT				



NOTES:

1. GROOVING FOR RECESSED PAVEMENT MARKING, 5"
2. GROOVING FOR RECESSED PAVEMENT MARKING, 7"
3. GROOVING FOR RECESSED PAVEMENT MARKING, 9"
4. GROOVING FOR RECESSED PAVEMENT MARKING, 25"



MODEL: D:\p1\h\h
 FILE NAME: V:\326\10 - IL 47 Resurfacing_P1\CAD\CADD\CADD_Sheets\66M41-2br-pmk-2.dgn

Hutchinson Engineering, Inc.
 Jacksonville Moline Peoria Shorewood
 Since 1945

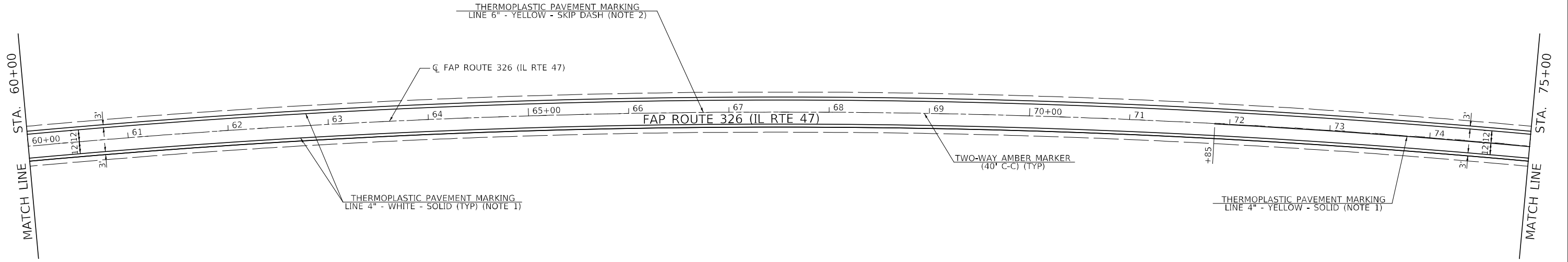
USER NAME = BDeCraene	DESIGNED -	REVISED -
PLOT SCALE = 100,0000' / in.	DRAWN -	REVISED -
PLOT DATE = 2/1/2022	CHECKED -	REVISED -
	DATE -	REVISED -

STATE OF ILLINOIS
DEPARTMENT OF TRANSPORTATION

FAP ROUTE 326 (IL RTE 47)
PAVEMENT MARKING PLAN

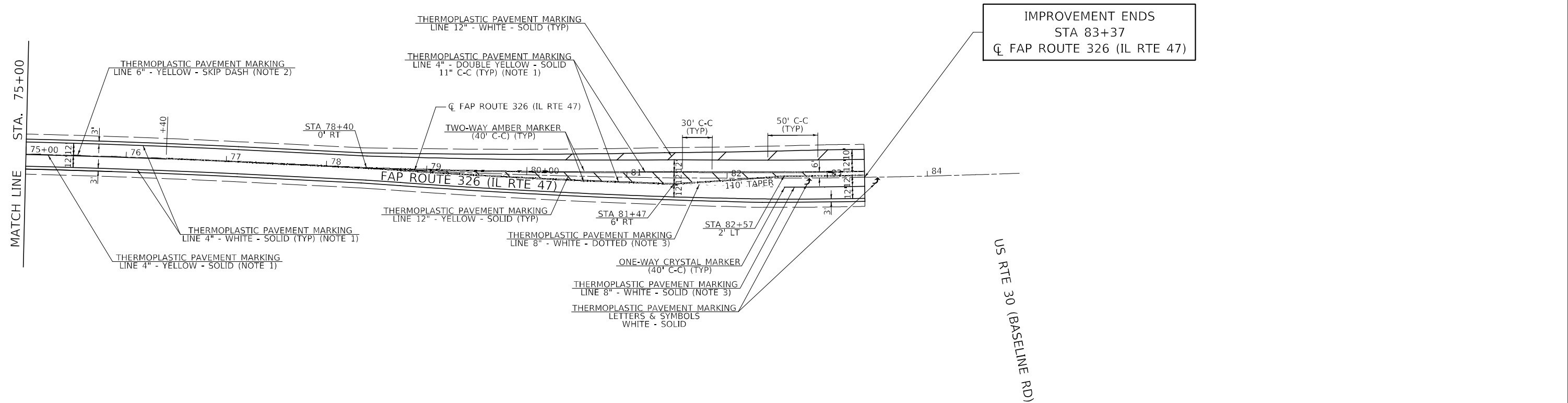
SCALE: 1"=50' SHEET 2 OF 3 SHEETS STA. 30+00.00 TO STA. 60+00.00

F.A.P. RTE.	SECTION	COUNTY	TOTAL SHEETS	SHEET NO.
326	(108)RS-6	KENDALL	18	14
CONTRACT NO. 66M41				
ILLINOIS FED. AID PROJECT				



NOTES:

1. GROOVING FOR RECESSED PAVEMENT MARKING, 5"
2. GROOVING FOR RECESSED PAVEMENT MARKING, 7"
3. GROOVING FOR RECESSED PAVEMENT MARKING, 9"
4. GROOVING FOR RECESSED PAVEMENT MARKING, 25"



IMPROVEMENT ENDS
STA 83+37
☐ FAP ROUTE 326 (IL RTE 47)

US RTE 30 (BASELINE RD)

MODEL: D:\p\h\h\...
 FILE NAME: V:\B\B\...
 SHEETS: 66M41-20-2.dwg
 PROJECT: ILLINOIS STATE HIGHWAY 47 RECONSTRUCTION, PE

Hutchinson Engineering, Inc.
 Jacksonville Moline Peoria Shorewood
 Since 1945

USER NAME =	BDcraene
PLOT SCALE =	100,0000' / in.
PLOT DATE =	2/1/2022

DESIGNED -	
DRAWN -	
CHECKED -	
DATE -	

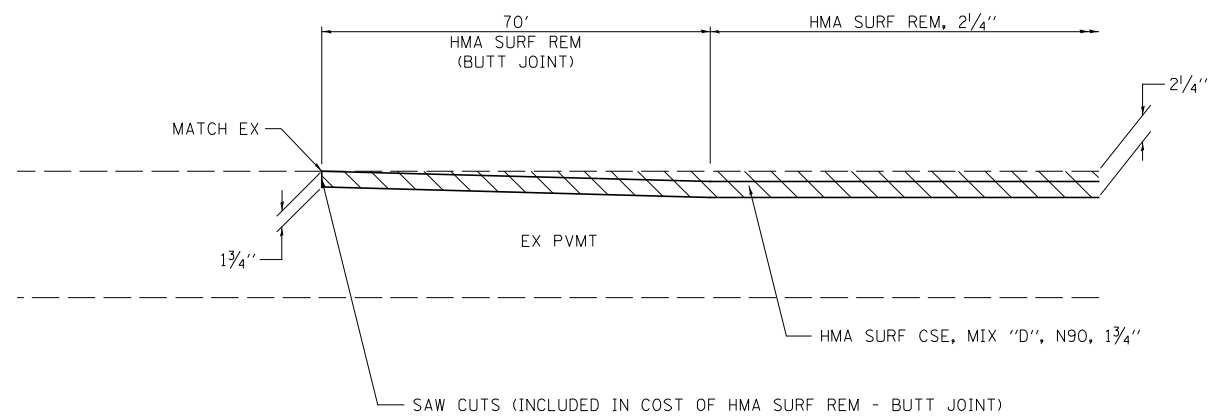
REVISED -	
REVISED -	
REVISED -	
REVISED -	

**STATE OF ILLINOIS
DEPARTMENT OF TRANSPORTATION**

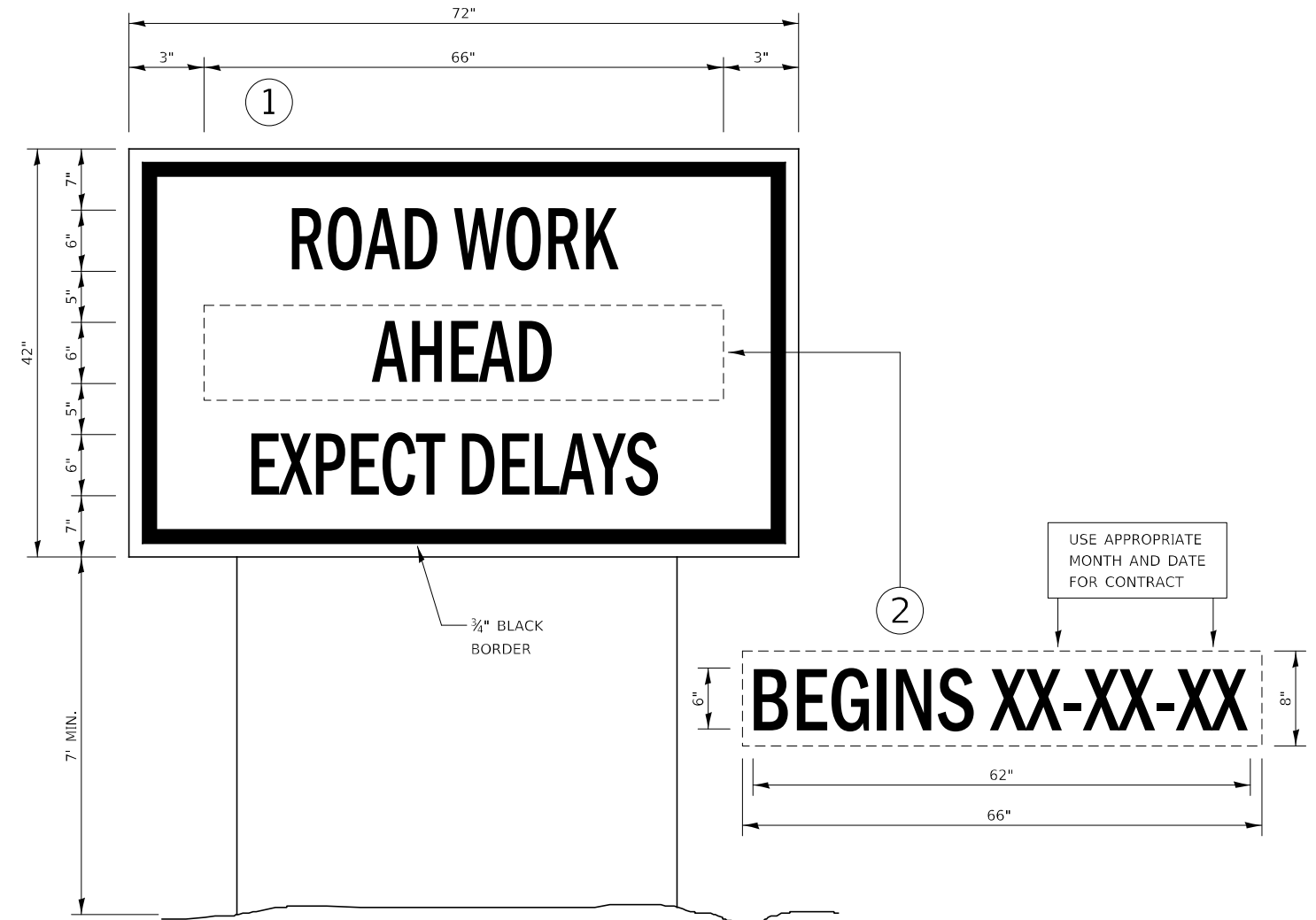
**FAP ROUTE 326 (IL RTE 47)
PAVEMENT MARKING PLAN**

SCALE: 1"=50' SHEET 3 OF 3 SHEETS STA. 60+00.00 TO STA. 84+91.65

F.A.P. RTE.	SECTION	COUNTY	TOTAL SHEETS	SHEET NO.
326	(108)RS-6	KENDALL	18	15
CONTRACT NO. 66M41				
ILLINOIS FED. AID PROJECT				



BEGINNING /ENDING TRANSITION DETAIL



TEMPORARY INFORMATION SIGNING

NOTES:

1. USE 6" D BLACK LETTERING ON FLUORESCENT ORANGE BACKGROUND.
2. ERECT SIGNS AT LOCATIONS IN ADVANCE OF THE "ROAD CONSTRUCTION AHEAD" SIGNS AS DIRECTED BY THE ENGINEER.
3. ERECT SIGN ① WITH INSTALLED PANEL ② A MINIMUM OF ONE WEEK PRIOR TO THE START OF THE LANE CLOSURE.
4. REMOVE PANEL ② ON THAT DATE.
5. SEE SPECIAL PROVISION "TEMPORARY INFORMATION SIGNING" FOR ADDITIONAL INFORMATION.
6. WILL BE PAID FOR PER SQ FT AS "TEMPORARY INFORMATION SIGNING". EACH SIGN = 21 SQ FT AND THE DATE PANEL ② WILL NOT BE MEASURED SEPARATELY FOR PAYMENT.

MODEL: D:\p4\h
FILE NAME: V:\326\45_10 - IL 47 Resurfacing PE_IL\CADD\CADD_Sheets\66M41_sht-detailed-1.dgn

Hutchison Engineering, Inc.
Jacksonville Moline Peoria Shorewood
Since 1945

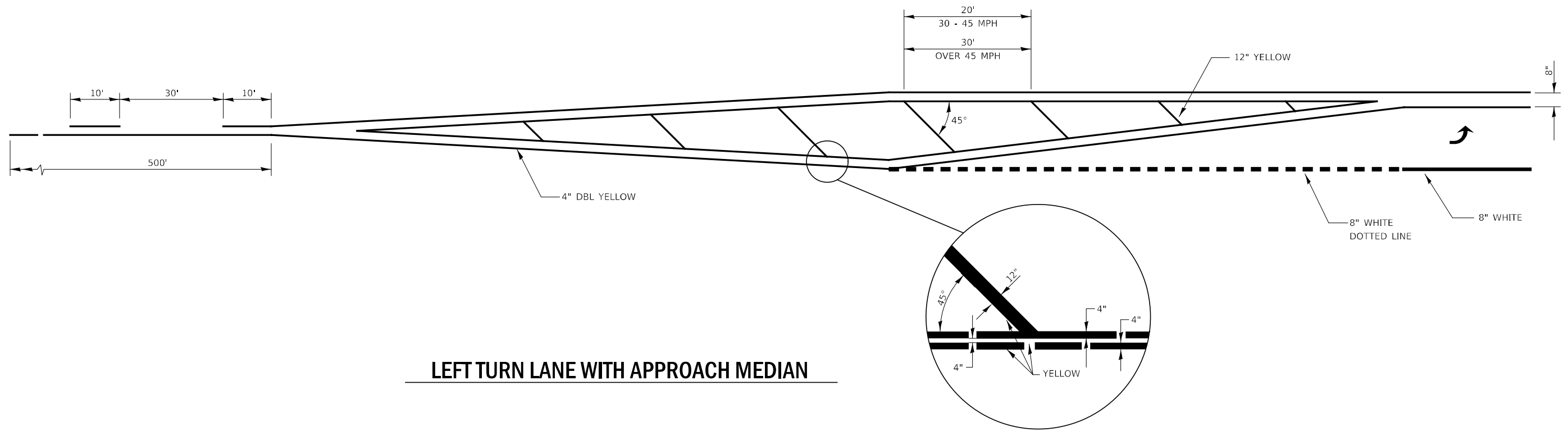
USER NAME = BDeCraene	DESIGNED -	REVISED -
	DRAWN -	REVISED -
PLOT SCALE = 2,000' / in.	CHECKED -	REVISED -
PLOT DATE = 2/1/2022	DATE -	REVISED -

**STATE OF ILLINOIS
DEPARTMENT OF TRANSPORTATION**

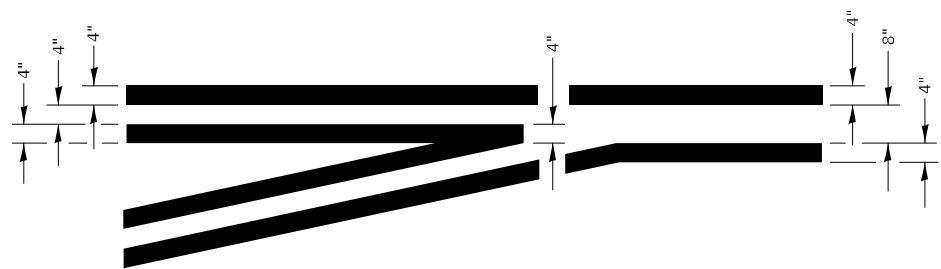
**FAP ROUTE 326 (IL RTE 47)
SPECIAL DETAILS**

SCALE: N/A SHEET 1 OF 3 SHEETS STA. N/A TO STA. N/A

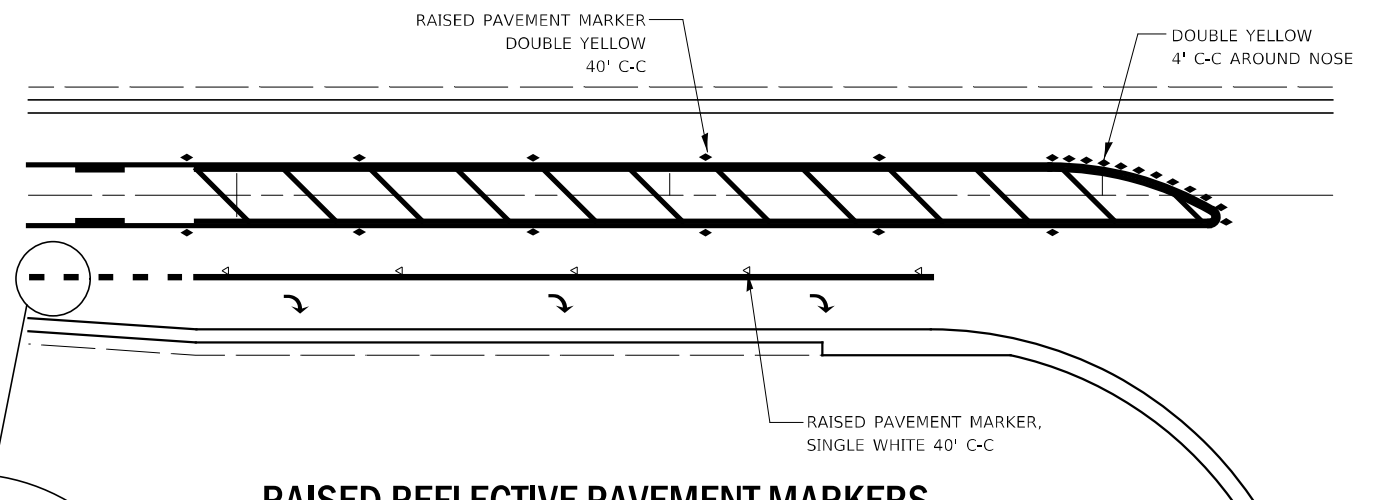
F.A.P. RTE.	SECTION	COUNTY	TOTAL SHEETS	SHEET NO.
326	(108)RS-6	KENDALL	18	16
CONTRACT NO. 66M41				
ILLINOIS FED. AID PROJECT				



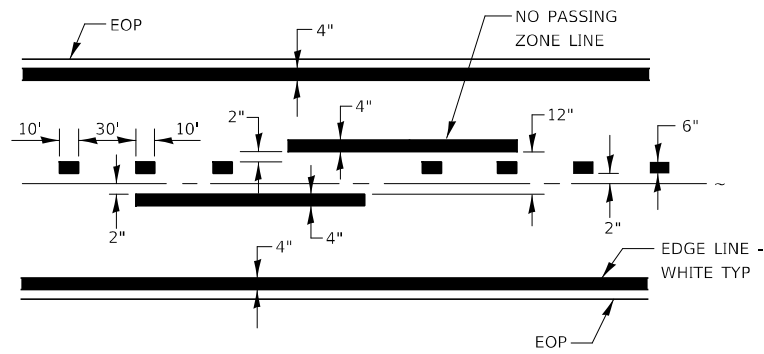
LEFT TURN LANE WITH APPROACH MEDIAN



**LEFT TURN LANE
TYPICAL APPLICATION**



**RAISED REFLECTIVE PAVEMENT MARKERS
@ RIGHT TURN LANE**



CENTERLINE & NO PASSING
ZONE LINES - YELLOW

EDGE LINE -
WHITE TYP

PAVEMENT MARKING

**ADVANCE AND INTERSECTION LANE
DIVIDER LINES**

MODEL: Default
FILE NAME: V:\326\10 - IL 47 Resurfacing - PE\10CAD\CADD - Sheets\66M41-sht-detailed-2.dgn

Hutchison Engineering, Inc.
Jacksonville Moline Peoria Shorewood
Since 1945

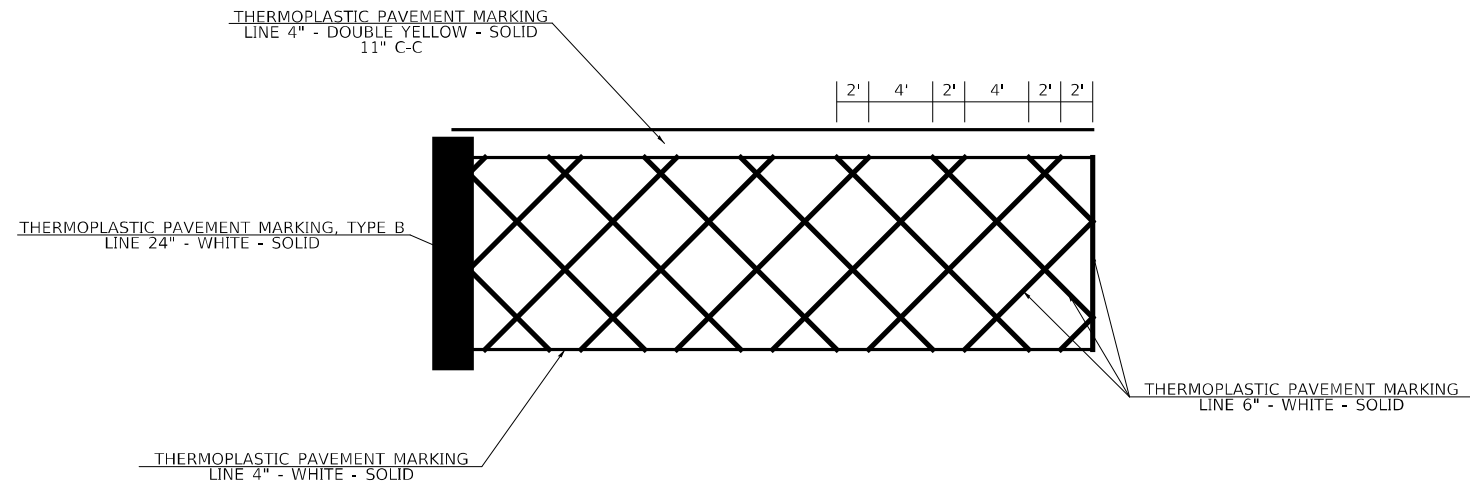
USER NAME = BDeCrane	DESIGNED -	REVISED -
	DRAWN -	REVISED -
PLOT SCALE = 2,000' / in.	CHECKED -	REVISED -
PLOT DATE = 2/1/2022	DATE -	REVISED -

**STATE OF ILLINOIS
DEPARTMENT OF TRANSPORTATION**

**FAP ROUTE 326 (IL RTE 47)
SPECIAL DETAILS**

SCALE: N/A SHEET 2 OF 3 SHEETS STA. N/A TO STA. N/A

F.A.P. RTE.	SECTION	COUNTY	TOTAL SHEETS	SHEET NO.
326	(108)RS-6	KENDALL	18	17
CONTRACT NO. 66M41				
ILLINOIS FED. AID PROJECT				



**GALENA RD W OF IL 47
PAVEMENT MARKING DETAIL**

MODEL: Default
FILE NAME: V:\326\10 - IL 47 Resurfacing_P1\ICADD\CADD_Sheets\66M41-Sub-Galena_PkDetail.dgn

Hutchison Engineering, Inc.
Jacksonville - Moline - Peoria - Shawneer
Since 1945

USER NAME = BDeCraene	DESIGNED -	REVISED -
	DRAWN -	REVISED -
PLOT SCALE = 4,0000' / in.	CHECKED -	REVISED -
PLOT DATE = 2/1/2022	DATE -	REVISED -

**STATE OF ILLINOIS
DEPARTMENT OF TRANSPORTATION**

**FAP ROUTE 326 (IL RTE 47)
SPECIAL DETAILS**

SCALE: N/A SHEET 3 OF 3 SHEETS STA. N/A TO STA. N/A

F.A.P. RTE.	SECTION	COUNTY	TOTAL SHEETS	SHEET NO.
326	(108)RS-6	KENDALL	18	18
CONTRACT NO. 66M41			ILLINOIS FED. AID PROJECT	