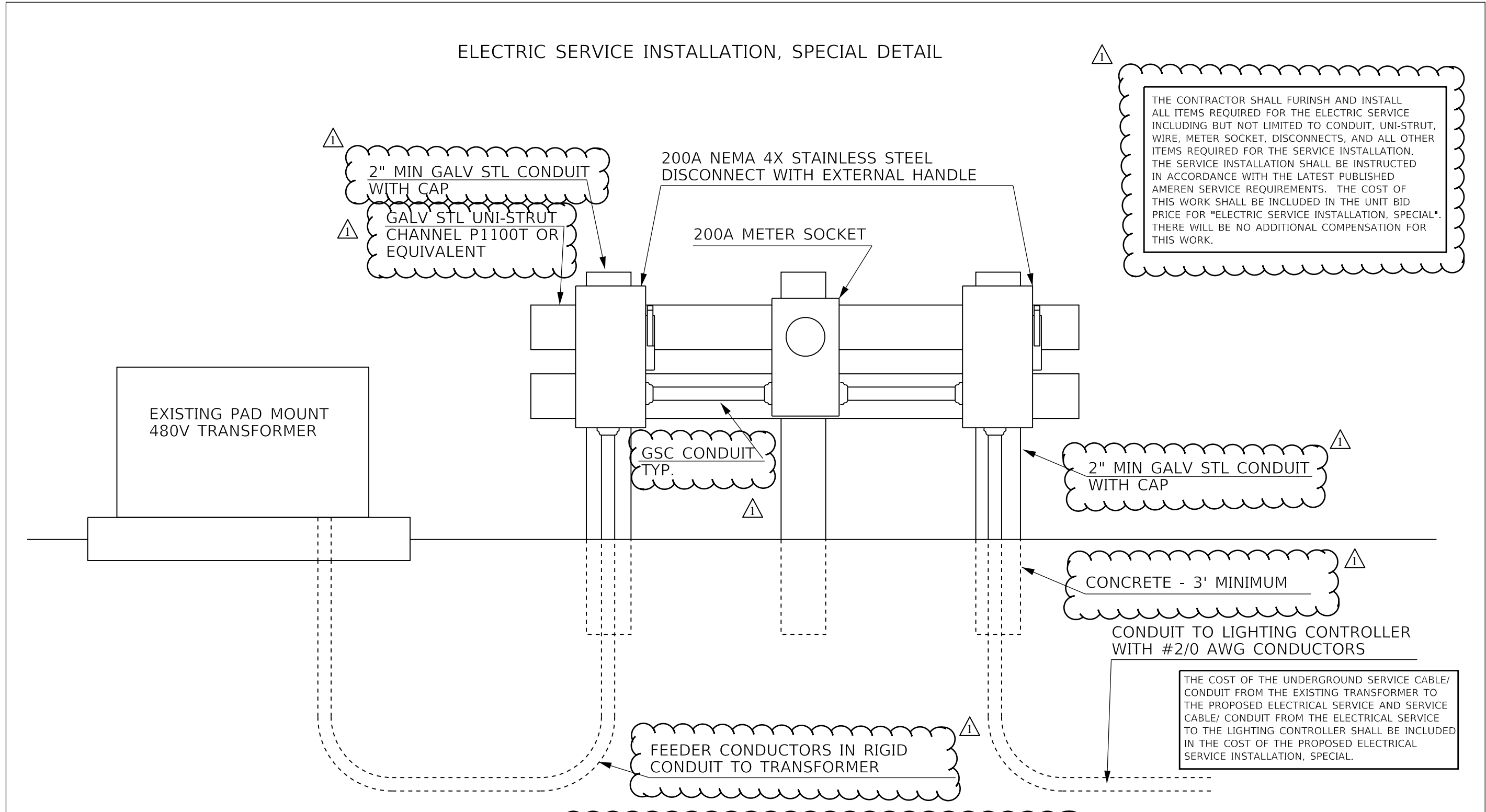


ELECTRIC SERVICE INSTALLATION, SPECIAL DETAIL

THE CONTRACTOR SHALL FURINSH AND INSTALL ALL ITEMS REQUIRED FOR THE ELECTRIC SERVICE INCLUDING BUT NOT LIMITED TO CONDUIT, UNI-STRUT, WIRE, METER SOCKET, DISCONNECTS, AND ALL OTHER ITEMS REQUIRED FOR THE SERVICE INSTALLATION. THE SERVICE INSTALLATION SHALL BE INSTRUCTED IN ACCORDANCE WITH THE LATEST PUBLISHED AMEREN SERVICE REQUIREMENTS. THE COST OF THIS WORK SHALL BE INCLUDED IN THE UNIT BID PRICE FOR "ELECTRIC SERVICE INSTALLATION, SPECIAL". THERE WILL BE NO ADDITIONAL COMPENSATION FOR THIS WORK.



~~* WOOD MAY BE REPLACED WITH COMPARABLE METAL STRUCTURE IF REQUIRED BY UTILITY COMPANY~~

THE COST OF THE UNDERGROUND SERVICE CABLE/ CONDUIT FROM THE EXISTING TRANSFORMER TO THE PROPOSED ELECTRICAL SERVICE AND SERVICE CABLE/ CONDUIT FROM THE ELECTRICAL SERVICE TO THE LIGHTING CONTROLLER SHALL BE INCLUDED IN THE COST OF THE PROPOSED ELECTRICAL SERVICE INSTALLATION, SPECIAL.

MODEL: 1400BELNAMES
FILE: 1400BELNAMES.DWG

USER NAME = \$USERS	DESIGNED -	REVISED -
PLOT SCALE = \$SCALES	DRAWN -	REVISED -
PLOT DATE = \$DATES	CHECKED -	REVISED -
	DATE -	REVISED -

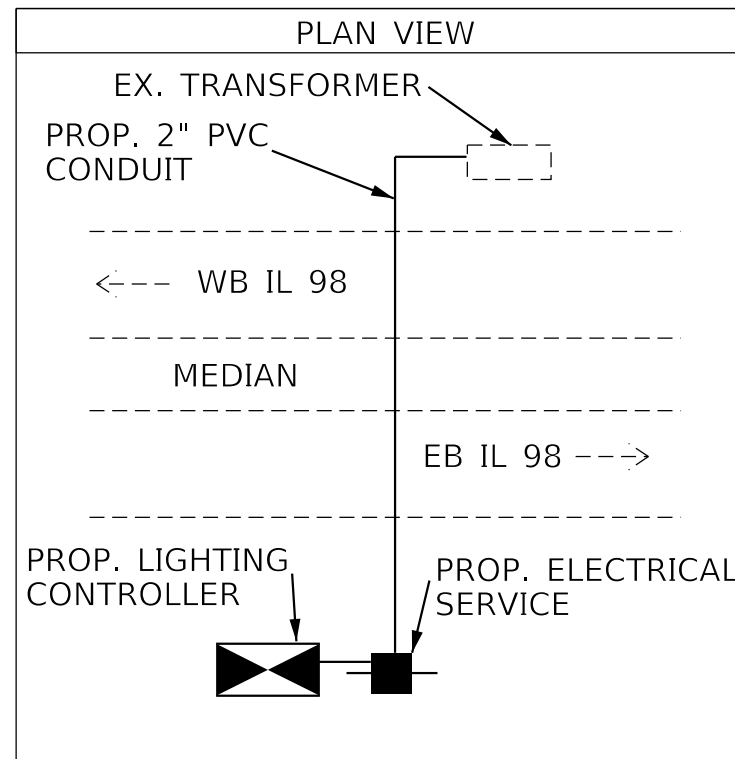
STATE OF ILLINOIS
DEPARTMENT OF TRANSPORTATION

PROPOSED ELECTRIC SERVICE INSTALLATION, SPECIAL DETAIL
I-474 & US24/IL 29 - TAZEWELL COUNTY
SCALE: SHEET OF SHEETS STA. TO STA.

F.A.I. RTE.	SECTION	COUNTY	TOTAL SHEETS	SHEET NO.
474	90(6,106)L	TAZEWELL	20	10
CONTRACT NO. 68G73				
ILLINOIS FED. AID PROJECT				

NOT TO SCALE

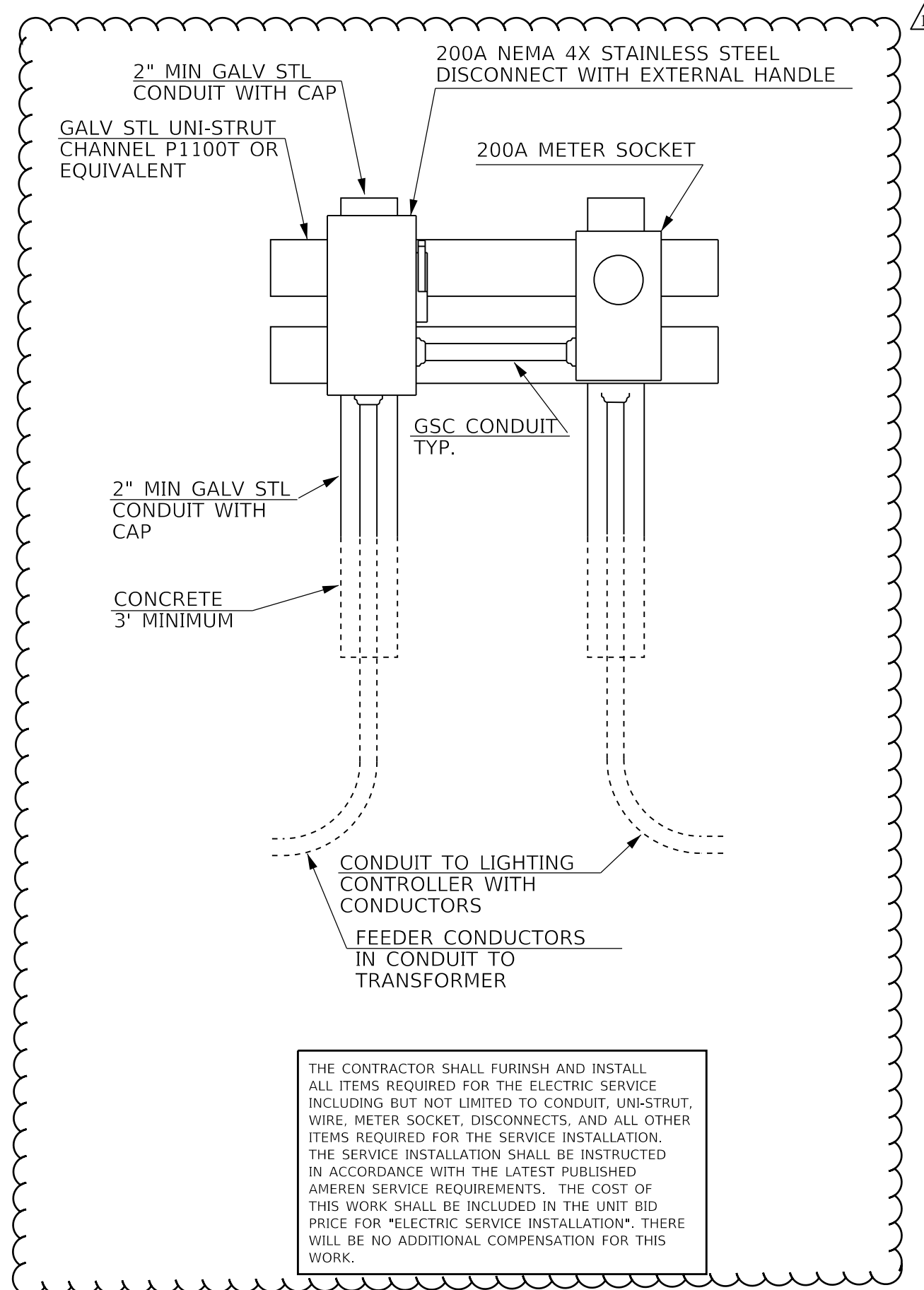
ELECTRIC SERVICE INSTALLATION



THE COST OF THE UNDERGROUND SERVICE CABLE/ CONDUIT FROM THE EXISTING TRANSFORMER TO THE PROPOSED ELECTRICAL SERVICE AND SERVICE CABLE/ CONDUIT FROM THE ELECTRICAL SERVICE TO THE LIGHTING CONTROLLER SHALL BE INCLUDED IN THE COST OF THE PROPOSED ELECTRICAL SERVICE INSTALLATION.

THE CONTRACTOR SHALL VERIFY UTILITY COMPANY SERVICE INSTALLATION REQUIREMENTS, THERE WILL BE NO ADDITIONAL COMPENSATION TO ACCOMMODATE ADDITIONAL REQUIREMENTS.

THE PROPOSED ELECTRICAL SERVICE INSTALLATION SHALL BE LOCATED EAST OF THE PROPOSED LIGHTING CONTROLLER ACCORDING TO ALL UTILITY COMPANY REQUIREMENTS.



THE CONTRACTOR SHALL FURNISH AND INSTALL ALL ITEMS REQUIRED FOR THE ELECTRIC SERVICE INCLUDING BUT NOT LIMITED TO CONDUIT, UNI-STRUT, WIRE, METER SOCKET, DISCONNECTS, AND ALL OTHER ITEMS REQUIRED FOR THE SERVICE INSTALLATION. THE SERVICE INSTALLATION SHALL BE INSTRUCTED IN ACCORDANCE WITH THE LATEST PUBLISHED AMEREN SERVICE REQUIREMENTS. THE COST OF THIS WORK SHALL BE INCLUDED IN THE UNIT BID PRICE FOR "ELECTRIC SERVICE INSTALLATION". THERE WILL BE NO ADDITIONAL COMPENSATION FOR THIS WORK.

MODEL: 140DELMNAMES
FILE NUMBER: 31115

USER NAME = \$USERS	DESIGNED -	REVISED -
PLOT SCALE = \$SCALES	DRAWN -	REVISED -
PLOT DATE = \$DATES	CHECKED -	REVISED -
	DATE -	REVISED -

**STATE OF ILLINOIS
DEPARTMENT OF TRANSPORTATION**

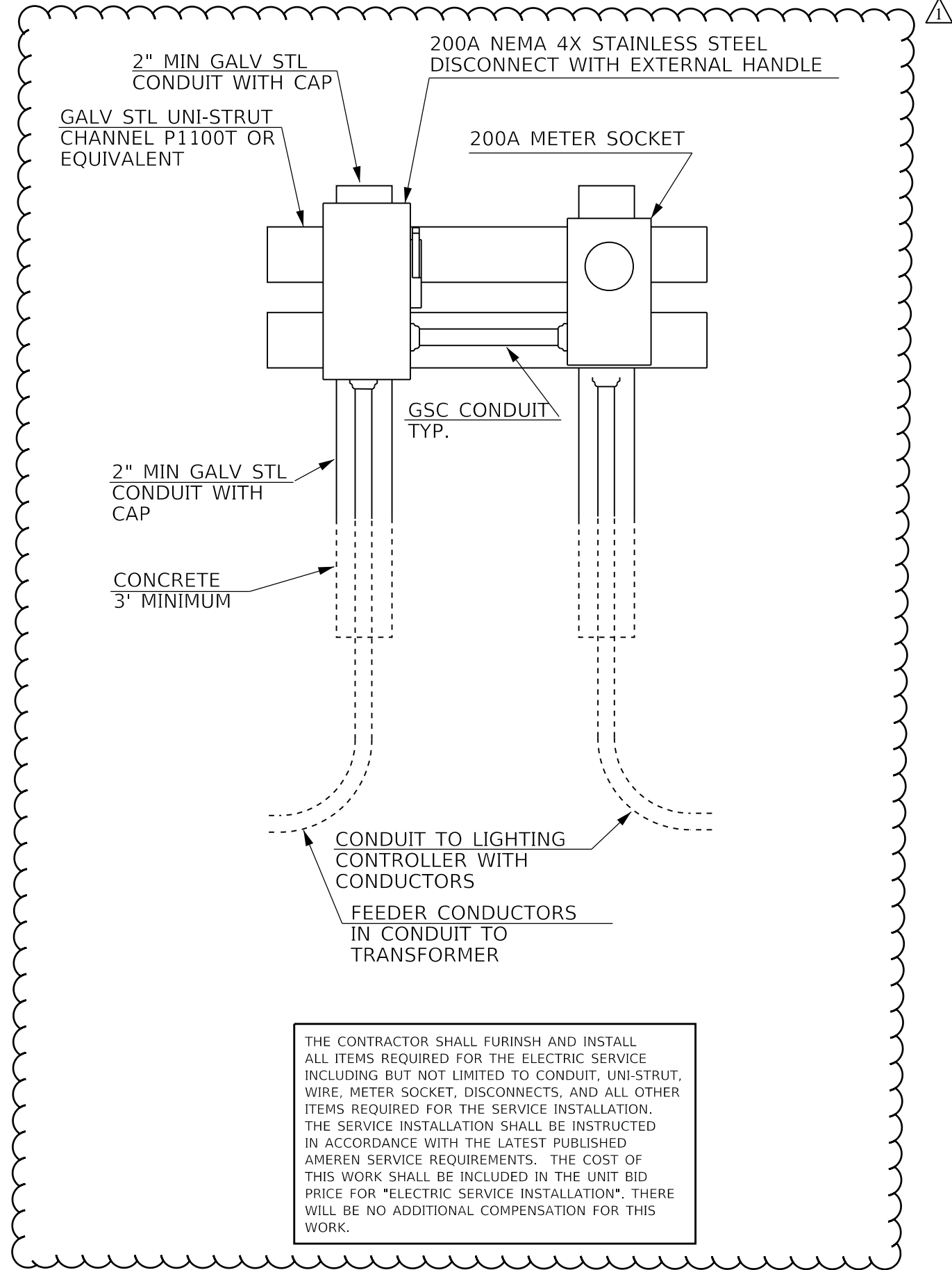
PROPOSED ELECTRIC SERVICE DETAIL
I-155 & IL 98 - TAZEWELL COUNTY

SCALE: SHEET OF SHEETS STA. TO STA.

F.A.I. RTE.	SECTION	COUNTY	TOTAL SHEETS	SHEET NO.
155	90(6,106)L	TAZEWELL	20	15
CONTRACT NO. 68G73				
ILLINOIS FED. AID PROJECT				

NOT TO SCALE

ELECTRIC SERVICE INSTALLATION



THE CONTRACTOR SHALL FURINSH AND INSTALL ALL ITEMS REQUIRED FOR THE ELECTRIC SERVICE INCLUDING BUT NOT LIMITED TO CONDUIT, UNI-STRUT, WIRE, METER SOCKET, DISCONNECTS, AND ALL OTHER ITEMS REQUIRED FOR THE SERVICE INSTALLATION. THE SERVICE INSTALLATION SHALL BE INSTRUCTED IN ACCORDANCE WITH THE LATEST PUBLISHED AMEREN SERVICE REQUIREMENTS. THE COST OF THIS WORK SHALL BE INCLUDED IN THE UNIT BID PRICE FOR "ELECTRIC SERVICE INSTALLATION". THERE WILL BE NO ADDITIONAL COMPENSATION FOR THIS WORK.

NOT TO SCALE

MODEL: 140DELENAME
FILE: 140MDEP_STEELS

USER NAME = \$USERS	DESIGNED -	REVISED -
	DRAWN -	REVISED -
PLOT SCALE = \$SCALES	CHECKED -	REVISED -
PLOT DATE = \$DATES	DATE -	REVISED -

**STATE OF ILLINOIS
DEPARTMENT OF TRANSPORTATION**

**PROPOSED ELECTRIC SERVICE DETAIL
I-155 & QUEENWOOD RD. - TAZEWELL COUNTY**

SCALE: SHEET OF SHEETS STA. TO STA.

F.A.I. RTE.	SECTION	COUNTY	TOTAL SHEETS	SHEET NO.
155	90(6,106)L	TAZEWELL	20	19
CONTRACT NO. 68G73				
ILLINOIS FED. AID PROJECT				



Luminaire Performance Table



Project

Table with 4 columns: Date, Contract Number, Section Number, County. Values: 02/09/22, 68G73, 90(6,106)L, Tazewell

Table with 2 columns: Marked Route Number, Municipality. Values: I-474, I-155, Tazewell County

Roadway

Table with 5 columns: Lane Width, # of Lanes, Median Width, I.E.S. Surface Classification, Q-Zero Value. Values: 12 ft, 3, N/A, R3, 0.07

Structure

Table with 4 columns: Mounting Height, Arm Length, Set-Back, Number of Luminares. Values: 45.0 FT., 1.0 FT., 30 FT., N/A

Luminaire

Table with 3 columns: Description, I.E.S. Lateral Distribution, I.E.S. Vertical Distribution. Values: LED, OUTPUT DESIGNATION G, TYPE II, MEDIUM

Layout

Table with 2 columns: Spacing (to Nearest 5 ft), Configuration (Opposite, Staggered, 1 Sided, or Median). Values: 280 FT., ONE SIDED

Performance

Table with 4 columns: Average Illuminance, Uniformity Ratio, Average Luminance, Veiling Luminance Ratio. Values: ≥ 0.8, ≤ 3.0:1, ≥ 0.6, ≤ 3.5:1, ≤ 6.0:1, ≤ 0.4:1

Light Trespass

Table with 3 columns: Distance to ROW, Max. Horizontal Illuminance, Max. Vertical Illuminance. Values: N/A, N/A, N/A

Notes

- 1. Set-Back is from Edge of Pavement (white line) except for sign luminaires when it is vertical and horizontal distance from the sign to the luminaire.
2. Lighting calculations shall be performed with all luminaires oriented toward and perpendicular to the roadway.
3. Total Light Loss Factor (LLF) = the product of "Lumen Maintenance" (LLD) = 0.9, "Dirt Depreciation" (LDD) = 0.8, and "Equipment Factors" (EF) = 0.95.
4. Performance requirements shall be the minimum acceptable standards of photometric performance for the luminaire, based on the given conditions listed above.

BE GREATER THAN

INITIAL LUMENS OF THE PROPOSED LUMINAIRE MAY VARY FROM THE VALUES SPECIFIED IN THE TABLE GIVEN IN ARTICLE 1067.06 OF BDE SPECIAL PROVISION OF LUMINAIRE, LED. PERFORMANCE CRITERIA SHALL BE HELD TO ONE SIGNIFICANT DIGIT.

THERE WILL BE NO ADDITIONAL COMPENSTATION PAID FOR FURNISHING LUMINAIRES THAT EXCEED THE SPECIFIED VALUES FOR INITIAL LUMENS AND EXCEED THE MINIMUM VALUES AS SHOWN IN THE LUMINAIRE PERFORMANCE TABLES.

Printed 02/09/22

BDE 5630 (04/10/19)



Luminaire Performance Table



Project

Table with 4 columns: Date, Contract Number, Section Number, County. Values: 02/09/22, 68G73, 90(6,106)L, Tazewell

Table with 2 columns: Marked Route Number, Municipality. Values: I-474, Tazewell County

Roadway

Table with 5 columns: Lane Width, # of Lanes, Median Width, I.E.S. Surface Classification, Q-Zero Value. Values: 12 ft, 3, N/A, R3, 0.07

Structure

Table with 4 columns: Mounting Height, Arm Length, Set-Back, Number of Luminares. Values: 45.0 FT., 1.0 FT., 30 FT., N/A

Luminaire

Table with 3 columns: Description, I.E.S. Lateral Distribution, I.E.S. Vertical Distribution. Values: LED, OUTPUT DESIGNATION H, TYPE II, MEDIUM

Layout

Table with 2 columns: Spacing (to Nearest 5 ft), Configuration (Opposite, Staggered, 1 Sided, or Median). Values: 280 FT., ONE SIDED

Performance

Table with 4 columns: Average Illuminance, Uniformity Ratio, Average Luminance, Veiling Luminance Ratio. Values: ≥ 0.8, ≤ 3.0:1, ≥ 0.6, ≤ 3.5:1, ≤ 6.0:1, ≤ 0.4:1

Light Trespass

Table with 3 columns: Distance to ROW, Max. Horizontal Illuminance, Max. Vertical Illuminance. Values: N/A, N/A, N/A

Notes

- 1. Set-Back is from Edge of Pavement (white line) except for sign luminaires when it is vertical and horizontal distance from the sign to the luminaire.
2. Lighting calculations shall be performed with all luminaires oriented toward and perpendicular to the roadway.
3. Total Light Loss Factor (LLF) = the product of "Lumen Maintenance" (LLD) = 0.9, "Dirt Depreciation" (LDD) = 0.8, and "Equipment Factors" (EF) = 0.95.
4. Performance requirements shall be the minimum acceptable standards of photometric performance for the luminaire, based on the given conditions listed above.

BE GREATER THAN

INITIAL LUMENS OF THE PROPOSED LUMINAIRE MAY VARY FROM THE VALUES SPECIFIED IN THE TABLE GIVEN IN ARTICLE 1067.06 OF BDE SPECIAL PROVISION OF LUMINAIRE, LED. PERFORMANCE CRITERIA SHALL BE HELD TO ONE SIGNIFICANT DIGIT.

BDE 5630 (04/10/19)

BDE 5630 (04/10/19)

MODEL: ILMODEL\MAMES FILE NAME: ILMFILES

Table with 4 columns: USER NAME, DESIGNED, DRAWN, PLOT SCALE, PLOT DATE. Values: = \$USERS, -, -, = \$SCALES, = \$DATES

STATE OF ILLINOIS DEPARTMENT OF TRANSPORTATION

PROPOSED LUMINAIRE PERFORMANCE TABLES

SCALE: SHEET OF SHEETS STA. TO STA.

* FAI 474, FAI 155

Table with 5 columns: F.A.I. RTE., SECTION, COUNTY, TOTAL SHEETS, SHEET NO. Values: -, 90(6,106)L, TAZEWELL, 20, 20