

STATE OF ILLINOIS
DEPARTMENT OF TRANSPORTATION

F.A. R.T.E.	SECTION	COUNTY	TOTAL SHEETS	SHEET NO.
	90(6,106)L	TAZEWELL	20	1

FAI 474, FAI 155

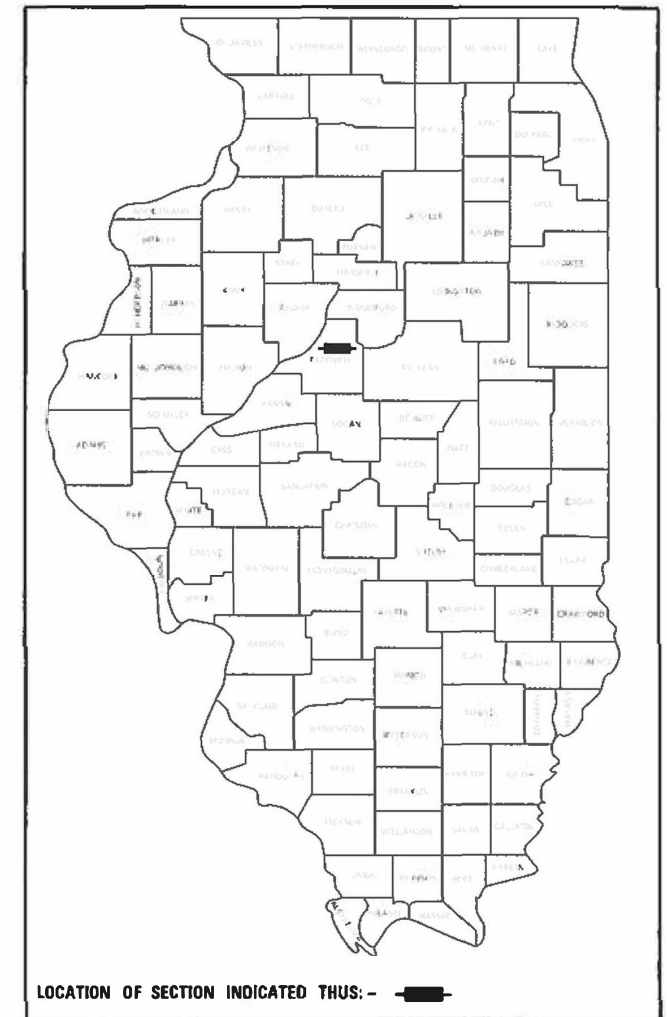
D-94-075-21

INDEX OF SHEETS:
SEE SHEET 2 FOR INDEX OF SHEETS

PROPOSED
HIGHWAY PLANS

FAI ROUTE 474 (I-474/US 24),
FAI ROUTE 155 (I-155)
90(6,106)L
TAZEWELL COUNTY

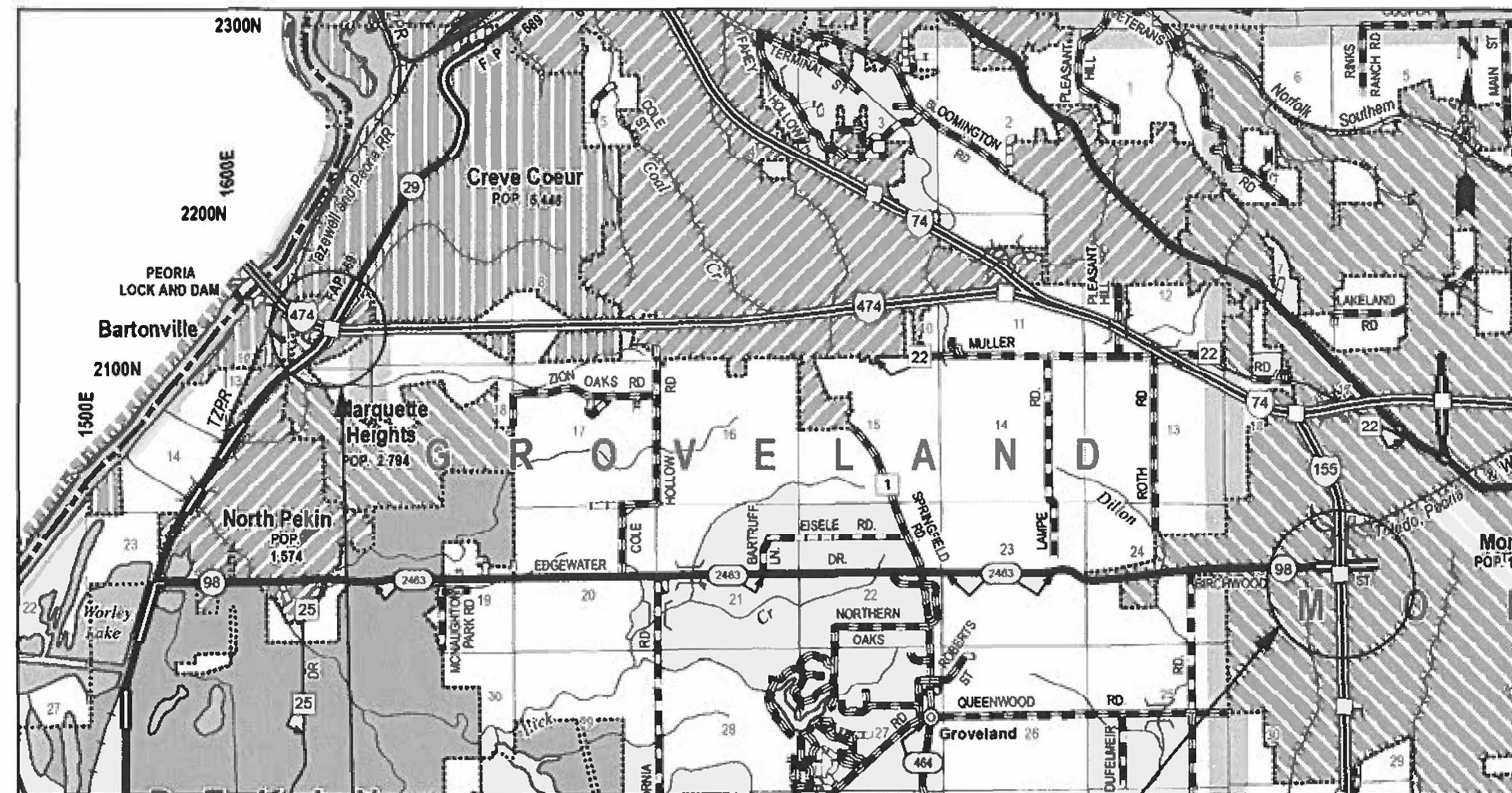
C-94-097-21



LOCATION OF SECTION INDICATED THIS: - [black rectangle]

HIGHWAY STANDARDS:
SEE SHEET 2 FOR A LIST OF
APPLICABLE HIGHWAY STANDARDS

PROJECT DESCRIPTION:
LIGHTING UPGRADES AT IL 29/I-474
INTERCHANGE IN CREVE COEUR,
I-155/IL 98 AND I-155/QUEENWOOD RD.
INTERCHANGES IN MORTON.



I-474 & US 24/ IL 29
INTERCHANGE

I-155 & IL 89
I-155 & QUEENWOOD
INTERCHANGES

J.U.L.I.E.
JOINT UTILITY LOCATION INFORMATION FOR EXCAVATORS
1-800-892-0123
OR 811

PROJECT ENGINEER : TREVOR HANSON (309) 671-4474
PROJECT MANAGER : ERIC HOWALD (309) 671-4481
CATALOG NO. 036260-00D
CONTRACT NO. 68G73

STATE OF ILLINOIS
DEPARTMENT OF TRANSPORTATION

SUBMITTED Feb 09 20 22
Kensel A Barnett RSD
REGIONAL ENGINEER

March 25 20 22
[Signature]
ENGINEER OF DESIGN AND ENVIRONMENT

March 25 20 22
Stephen M. Lewis
DIRECTOR OF HIGHWAYS PROJECT IMPLEMENTATION

PRINTED BY THE AUTHORITY
OF THE STATE OF ILLINOIS

NO COMMITMENTS HAVE BEEN MADE IN CONJUNCTION WITH THIS PROJECT

INDEX OF SHEETS	
SHEET	DESCRIPTION
1	COVER SHEET
2	COMMITMENTS, INDEX OF SHEETS, HIGHWAY STANDARDS
3	CONSTRUCTION NOTES
4	SUMMARY OF QUANTITIES
5	SCHEDULE OF QUANTITIES
6 - 7	EXISTING LIGHTING PLANS & REMOVAL ITEMS - I-474 & US24/ IL 29 - TAZEWELL COUNTY
8	PROPOSED LUMINAIRE SCHEDULE - I-474 & US24/ IL 29 - TAZEWELL COUNTY
9	PROPOSED LIGHTING CONTROLLER & ELECTRIC SERVICE DETAILS - I-474 & US24/ IL 29 - TAZEWELL COUNTY
10	PROPOSED ELECTRICAL SERVICE INSTALLATION, SPECIAL DETAIL - I-474 & US24/ IL 29 - TAZEWELL COUNTY
11 - 12	EXISTING LIGHTING PLANS & REMOVAL ITEMS - I-155 & IL 98 - TAZEWELL COUNTY
13	PROPOSED LUMINAIRE SCHEDULE - I-155 & IL 98 - TAZEWELL COUNTY
14	PROPOSED LIGHTING CONTROLLER DETAIL - I-155 & IL 98 - TAZEWELL COUNTY
15	PROPOSED ELECTRIC SERVICE DETAIL - I-155 & IL 98 - TAZEWELL COUNTY
16	EXISTING LIGHTING PLANS & REMOVAL ITEMS - I-155 & QUEENWOOD RD. - TAZEWELL COUNTY
17	PROPOSED LUMINAIRE SCHEDULE - I-155 & QUEENWOOD RD. - TAZEWELL COUNTY
18	PROPOSED LIGHTING CONTROLLER DETAIL - I-155 & QUEENWOOD RD. - TAZEWELL COUNTY
19	PROPOSED ELECTRIC SERVICE DETAIL - I-155 & QUEENWOOD RD. - TAZEWELL COUNTY
20	PROPOSED LUMINAIRE PERFORMANCE TABLES

HIGHWAY STANDARDS	
STANDARD	APPLICATION
000001-08	STANDARD SYMBOLS, ABBREVIATIONS AND PATTERNS
001006	DECIMAL OF AN INCH AND OF A FOOT
701001-02	OFF-ROAD OPERATIONS, 2L, 2W, MORE THAN 15' AWAY
701006-05	OFF-ROAD OPERATIONS, 2L, 2W, 15' TO 24" FROM PAVEMENT EDGE
701101-05	OFF-ROAD OPERATIONS, MULTILANE, 15' TO 24" FROM PAVEMENT EDGE
701106-02	OFF-ROAD OPERATIONS, MULTILANE, MORE THAN 15' AWAY
701301-04	LANE CLOSURE, 2L, 2W, SHORT TIME OPERATIONS
701400-11	APPROACH TO LANE CLOSURE, FREEWAY / EXPRESSWAY
701406-13	LANE CLOSURE, FREEWAY / EXPRESSWAY, DAY OPERATIONS ONLY
701411-09	LANE CLOSURE, MULTILANE, AT ENTRANCE OR EXIT RAMP, FOR SPEEDS ≥ 45 MPH
701422-10	LANE CLOSURE, MULTILANE, FOR SPEEDS ≥ 45 MPH TO 55 MPH
701426-09	LANE CLOSURE, MULTILANE, INTERMITTENT OR MOVING OPERATIONS, FOR SPEEDS ≥ 45 MPH
701427-05	LANE CLOSURE, MULTILANE, INTERMITTENT OR MOVING OPERATIONS, FOR SPEEDS ≤ 40 MPH
701456-05	PARTIAL EXIT RAMP CLOSURE FREEWAY / EXPRESSWAY
701901-08	TRAFFIC CONTROL DEVICES
821101-02	LUMINAIRE WIRING IN POLE
830021-02	LIGHT POLE STEEL TENON TOP
838001-01	BREAKAWAY DEVICES

MODEL: Default
FILE NAME: G:\COMMONCEN\Transfer - Bureau\68G73 - Final Plans\68G73 Lighting CM 2022 (2-9-22).dgn

* FAI 474, FAI 155

USER NAME = howalter PLOT SCALE = 206.2628' / in. PLOT DATE = 2/10/2022	DESIGNED - DRAWN - CHECKED - DATE -	REVISED - REVISED - REVISED - REVISED -	STATE OF ILLINOIS DEPARTMENT OF TRANSPORTATION	COMMITMENTS, INDEX OF SHEETS AND HIGHWAY STANDARDS	F.A.I. RTE. * SECTION 90(6.106)L COUNTY TAZEWELL TOTAL SHEETS 20 SHEET NO. 2 CONTRACT NO. 68G73 ILLINOIS FED. AID PROJECT
SCALE:			SHEET OF SHEETS STA. TO STA.		

CONSTRUCTION NOTES

1. EXISTING UTILITY LOCATION INFORMATION IS NOT SHOWN ON THE PLAN SHEETS. THE CONTRACTOR SHALL FIELD VERIFY THE LOCATION OF ALL UTILITIES AND PRIVATELY OWNED FACILITIES PRIOR TO THE INSTALLATION OF ANY COMPONENTS. THE CONTRACTOR SHALL VERIFY EXISTING FIELD CONDITIONS AND TERRAIN PRIOR TO COMMENCING WORK ON THE PROJECT.
2. THE LOCAITON OF ALL UTILITIES AND PRIVATELY OWNED FACILITIES SHALL BE FIELD VERIFIED BY THE CONTRACTOR PRIOR TO THE INSTALLATION OF ANY COMPONENTS.
3. THE CONTRACTOR SHALL BE RESPONSIBLE FOR LOCATING EXISTING IDOT ELECTRICAL FACILITIES AT HIS/HER OWN EXPENSE IF REQUIRED. THE CONTRACTOR SHALL ALSO BE LIABLE FOR ANY DAMAGE TO IDOT FACILITIES RESULTING FROM INACCURATE LOCATING.
4. ELECTRICAL WORK SHALL CONFORM WITH NATIONAL, STATE, AND LOCAL CODES.
5. THE CONTRACTOR SHALL PROVIDE ELECTRICAL CABLE SLACK IN ACCORDANCE WITH ARTICLE 873.03 UNLESS SPECIFIED OTHERWISE.
6. ALL SURPLUS MATERIALS SHALL BE DISPOSED OF IN ACCORDANCE WITH ARTICLE 202.03 OF THE STANDARD SPECIFICATIONS.
7. THE LOCATIONS FOR LIGHT POLES ARE PROVIDED FOR REFERENCE ONLY.
8. ANY MAINTENANCE OF EXISTING ELECTRICAL FACILITIES WILL BE CONSIDERED EXTRA WORK IN ACCORDANCE WITH ARTICLE 109.04 OF THE STANDARD SPECIFICATIONS.
9. THE EXISTING LIGHTING SYSTEM SHALL REMAIN IN OPERATION DURING THE INSTALLATION OF THE PROPOSED LUMINAIRES, LIGHT POLES, BREAKAWAY DEVICES AND LIGHTING CONTROLLERS.
10. REMOVAL OF EXISTING ITEMS (LUMINAIRES, WIRING, METAL SCREENS, LIGHTING CONTROLLERS, ELECTRICAL SERVICES, ETC.) WILL NOT BE PAID FOR SEPARATELY, BUT SHALL BE INCLUDED IN THE UNIT BID PRICES FOR THE PROPOSED ITEMS.
11. THE CONTRACTOR SHALL FURNISH AND INSTALL NEW FUSEHOLDERS, FUSES, SURGE ARRESTORS, AND LUMINAIRE WIRING INSIDE THE POLE. THE COST OF THIS WORK SHALL BE INCLUDED IN THE PRICE OF THE PROPOSED LUMINAIRES.
12. THE CONTRACTOR SHALL DISPOSE OF THE EXISTING HPS LAMPS AT A CERTIFIED RECYCLING FACILITY. THE COST OF THIS WORK SHALL BE INCLUDED IN THE BID PRICE OF THE PROPOSED LUMINAIRES.
13. THE CONTRACTOR SHALL FURNISH AND INSTALL 1 FT. LUMINAIRE ARMS ONTO THE PROPOSED AND EXISTING TENON TOP LIGHT POLES AS SHOWN IN THE PLANS. THE COST OF THIS WORK SHALL BE INCLUDED IN THE UNIT BID PRICE OF THE LUMINAIRE MOUNTING BRACKET - SPECIAL.
14. THE CONTRACTOR SHALL FURNISH AND INSTALL NEW STAINLESS STEEL OR PERFORATED ALUMINUM SCREENING AROUND AN EXISTING LIGHT POLE. THE CONTRACTOR SHALL REMOVE THE EXISTING SCREEN AND DISPOSE OF IT OFF OF THE RIGHT OF WAY. THE PROPOSED SCREEN SHALL BE SECURELY BANDED ON THE TOP AND BOTTOM OF THE BREAKAWAY COUPLINGS TO PREVENT RODENT ENTRY AND NO GAPS IN EXCESS OF 0.25 INCH WILL BE ALLOWED. THE COST OF THIS WORK SHALL BE INCLUDED IN THE PAY ITEM "FURNISH AND INSTALL METAL SCREEN."
15. THE CONTRACTOR SHALL FURNISH AND INSTALL ALL ITEMS REQUIRED TO INSTALL THE PROPOSED ELECTRIC SERVICE, INCLUDING BUT NOT LIMITED TO SERVICE DISCONNECT, MOUNTING STRUCTURE, CONDUIT, ELECTRIC CABLE, JUNCTION BOXES, BRACKETS, HARDWARE, AND ALL OTHER ITEMS REQUIRED FOR THE SERVICE INSTALLATION AND SERVICE CONNECTION TO THE LIGHTING CONTROLLER. THE CONTRACTOR SHALL VERIFY REQUIREMENTS WITH THE UTILITY COMPANY AND COORDINATE AS NEEDED WITH THE UTILITY COMPANY. THE CONTRACTOR SHALL VERIFY EXISTING FIELD CONDITIONS AND UTILITY COMPANY REQUIREMENTS PRIOR TO BIDDING. THIS WORK WILL BE PAID FOR AS "ELECTRICAL SERVICE INSTALLATION" AND SHALL BE PAYMENT IN FULL FOR ALL LABOR, EQUIPMENT, AND MATERIALS REQUIRED FOR THE SERVICE INSTALLATION. THERE WILL BE NO ADDITIONAL COMPENSATION.
16. THE CONTRACTOR SHALL FURNISH AND INSTALL ALL ITEMS REQUIRED TO INSTALL THE PROPOSED 480V COLD SEQUENCE ELECTRIC SERVICE, INCLUDING BUT NOT LIMITED TO SERVICE DISCONNECTS, WOOD RACK STRUCTURE, CONDUIT, ELECTRIC CABLE, JUNCTION BOXES, BRACKETS, HARDWARE, AND ALL OTHER ITEMS REQUIRED FOR THE SERVICE INSTALLATION AND SERVICE CONNECTION TO THE LIGHTING CONTROLLER. THE CONTRACTOR SHALL VERIFY REQUIREMENTS WITH THE UTILITY COMPANY AND COORDINATE AS NEEDED WITH THE UTILITY COMPANY. THE CONTRACTOR SHALL VERIFY EXISTING FIELD CONDITIONS AND UTILITY COMPANY REQUIREMENTS PRIOR TO BIDDING. THIS WORK WILL BE PAID FOR AS "ELECTRICAL SERVICE INSTALLATION, SPECIAL" AND SHALL BE PAYMENT IN FULL FOR ALL LABOR, EQUIPMENT, AND MATERIALS REQUIRED FOR THE SERVICE INSTALLATION. THERE WILL BE NO ADDITIONAL COMPENSATION.
17. THE EXISTING LIGHTING CONTROLLER LOCATED AT I-155 & QUEENWOOD RD. IS A POLE MOUNTED CONTROLLER. THE CONTRACTOR SHALL FURNISH AND INSTALL A SCREW-IN FOUNDATION FOR THE PROPOSED LIGHTING CONTROLLER. THE CONTRACTOR SHALL FURNISH AND INSTALL CONDUIT, WIRING, JUNCTION BOXES AND ALL OTHER ITEMS REQUIRED TO CONNECT THE PROPOSED LIGHTING CONTROLLER TO THE EXISTING LIGHTING CIRCUITS. THE COST OF THIS WORK SHALL BE INCLUDED IN THE COST OF THE PROPOSED LIGHTING CONTROLLER. THERE WILL BE NO ADDITIONAL COMPENSATION FOR THIS WORK.
18. THE CONTRACTOR SHALL REMOVE THE LIGHTING CONTROLLER EQUIPMENT FROM THE EXISTING LIGHTING CONTROLLER CABINET AT THE I-155 & QUEENWOOD RD. INTERCHANGE. THE EXISTING LIGHTING CONTROLLER CABINET SHALL REMAIN IN PLACE AND BE USED TO HOUSE CIRCUIT CONNECTIONS BETWEEN THE FIELD WIRES AND THE PROPOSED LIGHTING CONTROLLER.
19. THE EXISTING LIGHTING CONTROLLER AT THE I-474 & US 24/ IL 29 INTERCHANGE SHALL BE REMOVED AND DELIVERED TO THE IDOT TRAFFIC BUILDING AT 1025 DETWEILLER DR. PEORIA, IL. THE REMOVAL AND DELIVERY OF THE EXISTING LIGHTING CONTROLLER WILL NOT BE PAID FOR SEPARATELY, BUT SHALL BE INCLUDED IN THE BID PRICE OF THE PROPOSED LIGHTING CONTROLLER.
20. THE CONTRACTOR SHALL FURNISH AND INSTALL UNDERGROUND SERVICE CABLE/ CONDUIT FROM THE EXISTING TRANSFORMER TO THE PROPOSED ELECTRICAL SERVICE AND SERVICE CABLE/ CONDUIT FROM THE PROPOSED ELECTRICAL SERVICE TO THE PROPOSED LIGHTING CONTROLLER. THIS WORK WILL NOT BE PAID FOR SEPARATELY, BUT SHALL BE INCLUDED IN THE COST OF THE PROPOSED ELECTRICAL SERVICE INSTALLATION.

* FAI 474, FAI 155

MODEL: Default
FILE NAME: C:\COMMON\GENT\Transfer - Bureau\68G73 - Final\Plan\68G73 Lighting.ctb 2022 (2:52:21)am

USER NAME = howaldier	DESIGNED -	REVISED -
	DRAWN -	REVISED -
PLOT SCALE = 206,2628' / in.	CHECKED -	REVISED -
PLOT DATE = 2/10/2022	DATE -	REVISED -

**STATE OF ILLINOIS
DEPARTMENT OF TRANSPORTATION**

CONSTRUCTION NOTES

SCALE: SHEET OF SHEETS STA. TO STA.

F.A.I. RTE.	SECTION	COUNTY	TOTAL SHEETS	SHEET NO.
*	90(6,106)L	TAZEWELL	20	3
			CONTRACT NO. 68G73	
		ILLINOIS FED. AID PROJECT		

SUMMARY OF QUANTITIES

TAZEWELL COUNTY
CONST. CODE 0021
100% STATE
LIGHTING
URBAN

ITEM NUMBER	ITEM DESCRIPTION	UNIT	TOTAL QTY.	
67100100	MOBILIZATION	L SUM	1.0	1.0
80400100	ELECTRIC SERVICE INSTALLATION	EACH	2.0	2.0
82110007	LUMINAIRE, LED, ROADWAY, OUTPUT DESIGNATION G	EACH	67.0	67.0
82110008	LUMINAIRE, LED, ROADWAY, OUTPUT DESIGNATION H	EACH	20.0	20.0
82500330	LIGHTING CONTROLLER, PEDESTAL MOUNTED, 240VOLT, 60AMP	EACH	2.0	2.0
82500380	LIGHTING CONTROLLER, BASE MOUNTED, 480VOLT, 200AMP	EACH	1.0	1.0
83060830	LIGHT POLE, GALVANIZED STEEL, 45 FT. M.H., TENON MOUNT	EACH	15.0	15.0
83800650	BREAKAWAY DEVICE, COUPLING WITH STAINLESS STEEL SCREEN	EACH	60.0	60.0
X7010216	TRAFFIC CONTROL AND PROTECTION, (SPECIAL)	L SUM	1.0	1.0
X8040102	ELECTRIC SERVICE INSTALLATION, SPECIAL	EACH	1.0	1.0
X8210402	LUMINAIRE MOUNTING BRACKET - SPECIAL	EACH	86.0	86.0
X8380070	BREAKAWAY DEVICE, TRANSFORMER BASE, 15 INCH TOP & 17 INCH BOTTOM BOLT CIRCLE	EACH	5.0	5.0
Z0025615	FURNISH AND INSTALL METAL SCREEN	EACH	7.0	7.0

* FAI 474, FAI 155

MODEL: Default
FILE NAME: C:\COMMON\GENTransfer - Bureau\68G73 - Final\Bldg\68G73 Lighting C4 2022 (2-29-22).dgn

USER NAME = howalter	DESIGNED -	REVISED -
	DRAWN -	REVISED -
PLOT SCALE = 206,2628 ' / in.	CHECKED -	REVISED -
PLOT DATE = 2/10/2022	DATE -	REVISED -

**STATE OF ILLINOIS
DEPARTMENT OF TRANSPORTATION**

SUMMARY OF QUANTITIES

SCALE: SHEET OF SHEETS STA. TO STA.

F.A.I. RTE.	SECTION	COUNTY	TOTAL SHEETS	SHEET NO.
*	90(6,106)L	TAZEWELL	20	4
CONTRACT NO. 68G73				
ILLINOIS FED. AID PROJECT				

SCHEDULE OF QUANTITIES

DESCRIPTION	UNIT	TOTAL QTY.	TAZEWELL COUNTY		
			I-474 & US 24/ IL 29	I-155 & IL 98	I-155 & QUEENWOOD RD.
MOBILIZATION	L SUM	1.0	0.6	0.2	0.2
ELECTRIC SERVICE INSTALLATION	EACH	2.0		1.0	1.0
LUMINAIRE, LED, ROADWAY, OUTPUT DESIGNATION G	EACH	67.0	44.0	15.0	8.0
LUMINAIRE, LED, ROADWAY, OUTPUT DESIGNATION H	EACH	20.0	20.0		
LIGHTING CONTROLLER, PEDESTAL MOUNTED, 240VOLT, 60AMP	EACH	2.0		1.0	1.0
LIGHTING CONTROLLER, BASE MOUNTED, 480VOLT, 200AMP	EACH	1.0	1.0		
LIGHT POLE, GALVANIZED STEEL, 45 FT. M.H., TENON MOUNT	EACH	15.0		15.0	
BREAKAWAY DEVICE, COUPLING WITH STAINLESS STEEL SCREEN	EACH	60.0		60.0	
TRAFFIC CONTROL AND PROTECTION, (SPECIAL)	L SUM	1.0	0.6	0.2	0.2
ELECTRIC SERVICE INSTALLATION, SPECIAL	EACH	1.0	1.0		
LUMINAIRE MOUNTING BRACKET - SPECIAL	EACH	86.0	64.0	15.0	7.0
BREAKAWAY DEVICE, TRANSFORMER BASE, 15 INCH TOP & 17 INCH BOTTOM BOLT CIRCLE	EACH	5.0	5.0		
FURNISH AND INSTALL METAL SCREEN	EACH	7.0			7.0

* FAI 474, FAI 155

MODEL Path: \\... FILE NAME: G:\COMMON\GENTransfer - Bureau\68G73 - Final\Bldg\68G73 Lighting C4 2022 (2-9-22).dgn

USER NAME = howaldt	DESIGNED -	REVISED -
PLOT SCALE = 206,2628 ' / in.	DRAWN -	REVISED -
PLOT DATE = 2/10/2022	CHECKED -	REVISED -
	DATE -	REVISED -

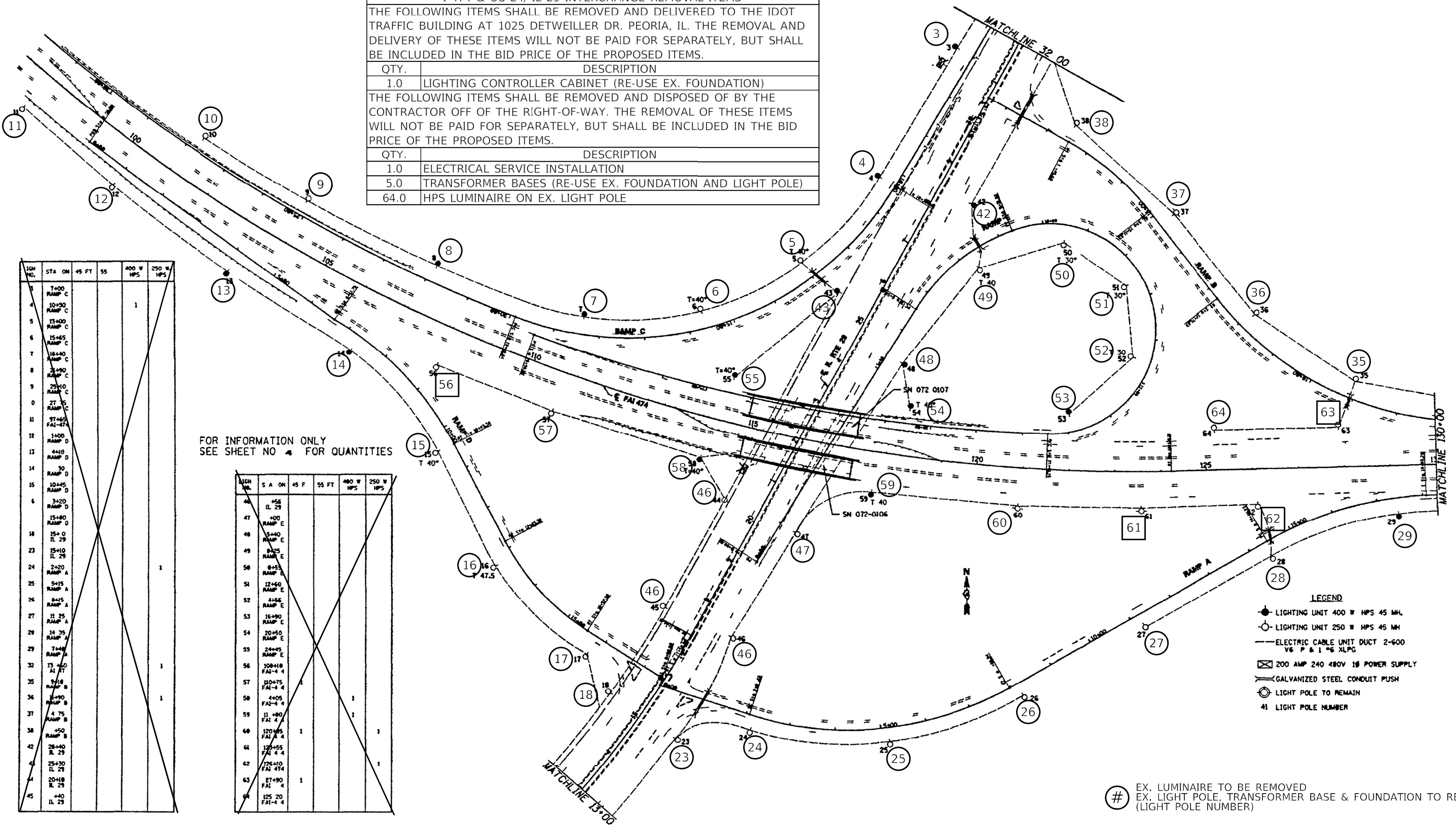
**STATE OF ILLINOIS
DEPARTMENT OF TRANSPORTATION**

SCHEDULE OF QUANTITIES

SCALE: SHEET OF SHEETS STA. TO STA.

F.A.I. RTE.	SECTION	COUNTY	TOTAL SHEETS	SHEET NO.
*	90(6,106)L	TAZEWELL	20	5
CONTRACT NO. 68G73				
ILLINOIS FED. AID PROJECT				

I-474 & US 24/ IL 29 INTERCHANGE REMOVAL ITEMS	
THE FOLLOWING ITEMS SHALL BE REMOVED AND DELIVERED TO THE IDOT TRAFFIC BUILDING AT 1025 DETWEILLER DR. PEORIA, IL. THE REMOVAL AND DELIVERY OF THESE ITEMS WILL NOT BE PAID FOR SEPARATELY, BUT SHALL BE INCLUDED IN THE BID PRICE OF THE PROPOSED ITEMS.	
QTY.	DESCRIPTION
1.0	LIGHTING CONTROLLER CABINET (RE-USE EX. FOUNDATION)
THE FOLLOWING ITEMS SHALL BE REMOVED AND DISPOSED OF BY THE CONTRACTOR OFF OF THE RIGHT-OF-WAY. THE REMOVAL OF THESE ITEMS WILL NOT BE PAID FOR SEPARATELY, BUT SHALL BE INCLUDED IN THE BID PRICE OF THE PROPOSED ITEMS.	
QTY.	DESCRIPTION
1.0	ELECTRICAL SERVICE INSTALLATION
5.0	TRANSFORMER BASES (RE-USE EX. FOUNDATION AND LIGHT POLE)
64.0	HPS LUMINAIRE ON EX. LIGHT POLE



IGN NO.	STA ON	45 FT	55	400 W HPS	250 W HPS
1	T+00				1
2	10+30				
3	13+00				
4	15+65				
5	18+40				
6	21+90				
7	25+10				
8	27+35				
9	27+65				
10	3+00				
11	4+10				
12	3+0				
13	10+45				
14	3+20				
15	15+80				
16	15+0				
17	15+10				
18	2+20				
19	5+15				
20	8+15				
21	11+25				
22	14+35				
23	7+45				
24	13+40				
25	9+8				
26	11+90				
27	4+75				
28	150				
29	28+40				
30	25+30				
31	20+18				
32	7+40				
33	125				

FOR INFORMATION ONLY
SEE SHEET NO. 4 FOR QUANTITIES

IGN NO.	S A ON	45 F	55 FT	400 W HPS	250 W HPS
34	45E				
35	IL 29				
36	4+00				
37	5+40				
38	RAMP E				
39	8+25				
40	RAMP E				
41	8+55				
42	RAMP E				
43	12+60				
44	RAMP E				
45	16+90				
46	RAMP E				
47	20+50				
48	RAMP E				
49	24+45				
50	RAMP E				
51	108+18				
52	FAI-4 4				
53	110+75				
54	FAI-4 4				
55	4+05				
56	FAI-4 4				
57	11+40				
58	FAI 4				
59	120+55				
60	FAI 4 4				
61	125+55				
62	FAI 4 4				
63	126+10				
64	FAI 474				
65	27+90				
66	FAI 4				
67	125 20				
68	FAI-4 4				

- LEGEND**
- LIGHTING UNIT 400 W HPS 45 MH
 - LIGHTING UNIT 250 W HPS 45 MH
 - ELECTRIC CABLE UNIT DUCT 2-600 V6 P & 1 #6 XLPG
 - ⊠ 200 AMP 240 480V 1Φ POWER SUPPLY
 - GALVANIZED STEEL CONDUIT PUSH
 - LIGHT POLE TO REMAIN
 - 41 LIGHT POLE NUMBER

- # EX. LUMINAIRE TO BE REMOVED
EX. LIGHT POLE, TRANSFORMER BASE & FOUNDATION TO REMAIN
(LIGHT POLE NUMBER)
- # EX. LUMINAIRE AND TRANSFORMER BASE TO BE REMOVED
EX. LIGHT POLE AND FOUNDATION TO REMAIN
(LIGHT POLE NUMBER)

NOTES:
1. THE COST OF REMOVAL AND DISPOSAL OFF OF RIGHT-OF-WAY WILL NOT BE PAID FOR SEPARATELY, BUT SHALL BE INCLUDED IN THE BID PRICE OF THE PROPOSED ITEMS.

NOT TO SCALE

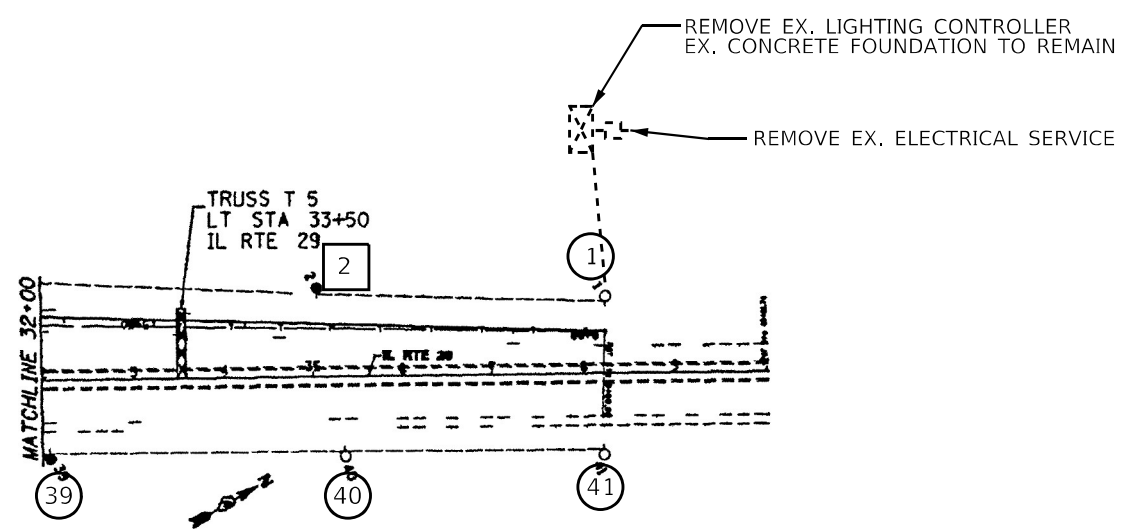
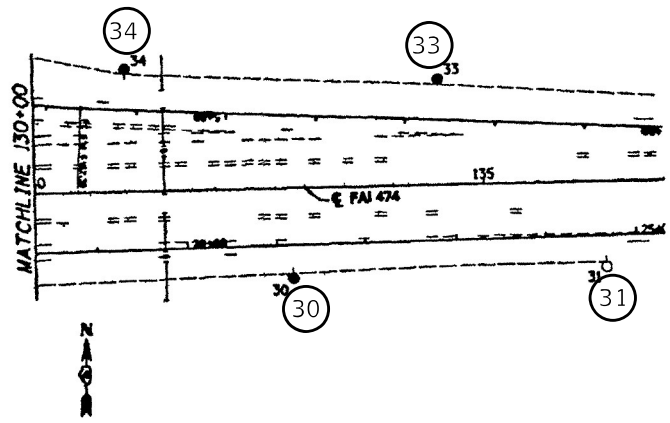
MODEL: Default
FILE NAME: G:\COMMON\GENT\Transfer - Bureau\68G73 - Final\Plan\68G73 Lighting CL4 2022 (2-23-22).dgn

USER NAME = howalter	DESIGNED -	REVISED -
PLOT SCALE = 206,2628' / in.	DRAWN -	REVISED -
PLOT DATE = 2/10/2022	CHECKED -	REVISED -
	DATE -	REVISED -

STATE OF ILLINOIS
DEPARTMENT OF TRANSPORTATION

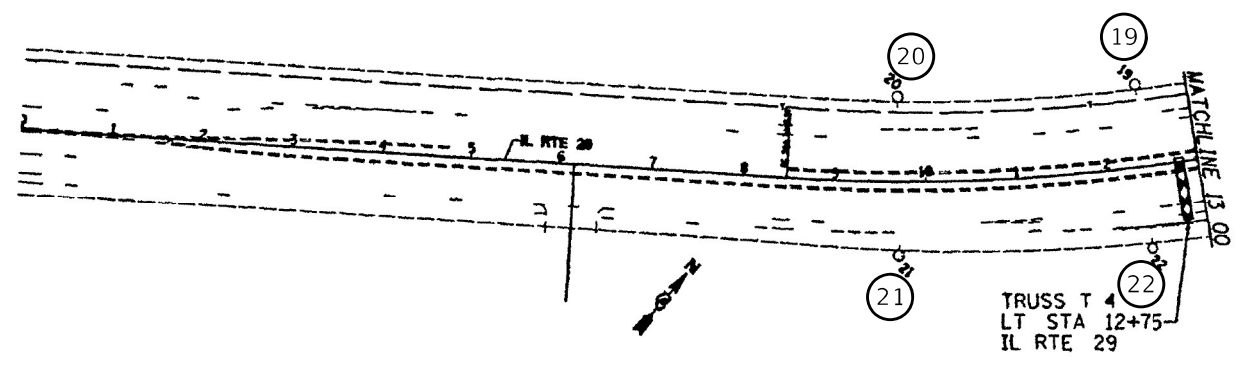
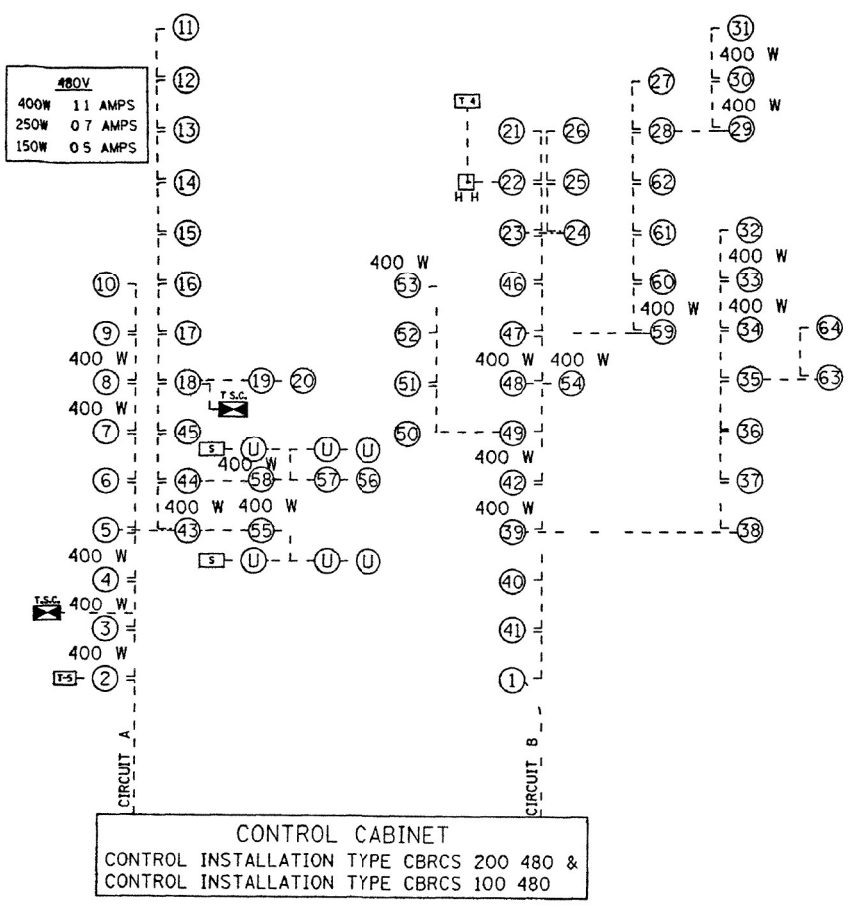
EXISTING LIGHTING PLANS & REMOVAL ITEMS	
I-474 & US24/IL 29 - TAZEWELL COUNTY	
SCALE:	SHEET OF SHEETS STA. TO STA.

F.A.I. RTE.	SECTION	COUNTY	TOTAL SHEETS	SHEET NO.
474	90(6,106)L	TAZEWELL	20	6
CONTRACT NO. 68G73				
ILLINOIS FED. AID PROJECT				



PORT NO.	STATION	45 F	55 FT	400 W HPS	250 W HPS
1	D400 RAMP C	1			1
2	3420 RAMP C	1		1	
19	12+40 IL 29	1			
20	9+78 IL 29	1			1
21	9+70 IL 29				1
22	12+40 IL 29				1
30	24+65 RAMP A				
31	24+65 RAMP A				1
33	24+65 RAMP B				
34	5+15 RAMP A				
38	32+05 IL 29		1	1	
40	32+25 IL 29	1			1
41	38+20 IL 29				1

FOR INFORMATION ONLY
SEE SHEET NO. 4 FOR QUANTITIES



LEGEND

- LIGHTING UNIT 400 W HPS 45 MM
- LIGHTING UNIT 250 W HPS 45 MM
- ELECTRIC CABLE UNIT DUCT 2-600 V6 IP & 1 1/2 XLPG
- ⊠ 200 AMP 240 480V 1Ø POWER SUPPLY
- GALVANIZED STEEL CONDUIT PUSH
- LIGHT POLE TO REMAIN
- # LIGHT POLE NUMBER

TAZEWELL COUNTY

- ⑦ LIGHT POLE NUMBER
- ⊠ TRUSS SIGN
- ⊠ BRIDGE MOUNT SIGN
- UNDERPASS LIGHT
- ⊠ TRAFFIC SIGNAL CONTROLLER

- EX. LUMINAIRE TO BE REMOVED
EX. LIGHT POLE, TRANSFORMER BASE & FOUNDATION TO REMAIN
(LIGHT POLE NUMBER)
- ⊠ EX. LUMINAIRE AND TRANSFORMER BASE TO BE REMOVED
EX. LIGHT POLE AND FOUNDATION TO REMAIN
(LIGHT POLE NUMBER)

NOTES:
1. THE COST OF REMOVAL AND DISPOSAL OFF OF RIGHT-OF-WAY WILL NOT BE PAID FOR SEPARATELY, BUT SHALL BE INCLUDED IN THE BID PRICE OF THE PROPOSED ITEMS.

NOT TO SCALE

MODEL Path: \\... FILE NAME: G:\COMMON\GEN\Transfer - Bureau\68G73 - Final\Plan\68G73 Lighting CLM 2022 (2-9-22).dgn

USER NAME = howaldier	DESIGNED -	REVISED -
	DRAWN -	REVISED -
PLOT SCALE = 206,2628' / in.	CHECKED -	REVISED -
PLOT DATE = 2/10/2022	DATE -	REVISED -

**STATE OF ILLINOIS
DEPARTMENT OF TRANSPORTATION**

**EXISTING LIGHTING PLANS & REMOVAL ITEMS - CONTINUED
I-474 & US24/IL 29 - TAZEWELL COUNTY**

SCALE: SHEET OF SHEETS STA. TO STA.

F.A.I. RTE.	SECTION	COUNTY	TOTAL SHEETS	SHEET NO.
474	90(6,106)L	TAZEWELL	20	7
CONTRACT NO. 68G73				
ILLINOIS FED. AID PROJECT				

LUMINAIRE SCHEDULE
I-474 & US 24/ IL 29

POLE NUMBER	EXISTING LUMINAIRE TYPE	VOLTAGE	MOUNTING HEIGHT	PROPOSED LUMINAIRE TYPE	PROPOSED LUMINAIRE QTY.	LUMINAIRE MOUNTING BRACKET - SPECIAL QTY.	BREAKAWAY DEVICE, TRANSFORMER BASE, 15 INCH TOP & 17 INCH BOTTOM BOLT CIRCLE QTY.	INSTALLATION NOTES
1	250W HPS	480V	45 FT.	LUMINAIRE, LED, ROADWAY, OUTPUT DESIGNATION G	1.0	1.0		
2	400W HPS	480V	45 FT.	LUMINAIRE, LED, ROADWAY, OUTPUT DESIGNATION H	1.0	1.0	1.0	
3	400W HPS	480V	45 FT.	LUMINAIRE, LED, ROADWAY, OUTPUT DESIGNATION H	1.0	1.0		
4	400W HPS	480V	45 FT.	LUMINAIRE, LED, ROADWAY, OUTPUT DESIGNATION H	1.0	1.0		
5	250W HPS	480V	45 FT.	LUMINAIRE, LED, ROADWAY, OUTPUT DESIGNATION G	1.0	1.0		
6	250W HPS	480V	45 FT.	LUMINAIRE, LED, ROADWAY, OUTPUT DESIGNATION G	1.0	1.0		
7	400W HPS	480V	45 FT.	LUMINAIRE, LED, ROADWAY, OUTPUT DESIGNATION H	1.0	1.0		
8	400W HPS	480V	45 FT.	LUMINAIRE, LED, ROADWAY, OUTPUT DESIGNATION H	1.0	1.0		
9	250W HPS	480V	45 FT.	LUMINAIRE, LED, ROADWAY, OUTPUT DESIGNATION G	1.0	1.0		
10	250W HPS	480V	45 FT.	LUMINAIRE, LED, ROADWAY, OUTPUT DESIGNATION G	1.0	1.0		
11	250W HPS	480V	45 FT.	LUMINAIRE, LED, ROADWAY, OUTPUT DESIGNATION G	1.0	1.0		
12	250W HPS	480V	45 FT.	LUMINAIRE, LED, ROADWAY, OUTPUT DESIGNATION G	1.0	1.0		
13	400W HPS	480V	45 FT.	LUMINAIRE, LED, ROADWAY, OUTPUT DESIGNATION H	1.0	1.0		
14	400W HPS	480V	45 FT.	LUMINAIRE, LED, ROADWAY, OUTPUT DESIGNATION H	1.0	1.0		
15	250W HPS	480V	45 FT.	LUMINAIRE, LED, ROADWAY, OUTPUT DESIGNATION G	1.0	1.0		
16	250W HPS	480V	45 FT.	LUMINAIRE, LED, ROADWAY, OUTPUT DESIGNATION G	1.0	1.0		
17	250W HPS	480V	45 FT.	LUMINAIRE, LED, ROADWAY, OUTPUT DESIGNATION G	1.0	1.0		
18	250W HPS	480V	45 FT.	LUMINAIRE, LED, ROADWAY, OUTPUT DESIGNATION G	1.0	1.0		
19	250W HPS	480V	45 FT.	LUMINAIRE, LED, ROADWAY, OUTPUT DESIGNATION G	1.0	1.0		
20	250W HPS	480V	45 FT.	LUMINAIRE, LED, ROADWAY, OUTPUT DESIGNATION G	1.0	1.0		
21	250W HPS	480V	45 FT.	LUMINAIRE, LED, ROADWAY, OUTPUT DESIGNATION G	1.0	1.0		
22	250W HPS	480V	45 FT.	LUMINAIRE, LED, ROADWAY, OUTPUT DESIGNATION G	1.0	1.0		
23	250W HPS	480V	45 FT.	LUMINAIRE, LED, ROADWAY, OUTPUT DESIGNATION G	1.0	1.0		
24	250W HPS	480V	45 FT.	LUMINAIRE, LED, ROADWAY, OUTPUT DESIGNATION G	1.0	1.0		
25	250W HPS	480V	45 FT.	LUMINAIRE, LED, ROADWAY, OUTPUT DESIGNATION G	1.0	1.0		
26	250W HPS	480V	45 FT.	LUMINAIRE, LED, ROADWAY, OUTPUT DESIGNATION G	1.0	1.0		
27	250W HPS	480V	45 FT.	LUMINAIRE, LED, ROADWAY, OUTPUT DESIGNATION G	1.0	1.0		
28	250W HPS	480V	45 FT.	LUMINAIRE, LED, ROADWAY, OUTPUT DESIGNATION G	1.0	1.0		
29	400W HPS	480V	45 FT.	LUMINAIRE, LED, ROADWAY, OUTPUT DESIGNATION H	1.0	1.0		
30	400W HPS	480V	45 FT.	LUMINAIRE, LED, ROADWAY, OUTPUT DESIGNATION H	1.0	1.0		
31	250W HPS	480V	45 FT.	LUMINAIRE, LED, ROADWAY, OUTPUT DESIGNATION G	1.0	1.0		
32	250W HPS	480V	45 FT.	LUMINAIRE, LED, ROADWAY, OUTPUT DESIGNATION G	1.0	1.0		
33	400W HPS	480V	45 FT.	LUMINAIRE, LED, ROADWAY, OUTPUT DESIGNATION H	1.0	1.0		
34	400W HPS	480V	45 FT.	LUMINAIRE, LED, ROADWAY, OUTPUT DESIGNATION H	1.0	1.0		
35	250W HPS	480V	45 FT.	LUMINAIRE, LED, ROADWAY, OUTPUT DESIGNATION G	1.0	1.0		
36	250W HPS	480V	45 FT.	LUMINAIRE, LED, ROADWAY, OUTPUT DESIGNATION G	1.0	1.0		
37	250W HPS	480V	45 FT.	LUMINAIRE, LED, ROADWAY, OUTPUT DESIGNATION G	1.0	1.0		
38	250W HPS	480V	45 FT.	LUMINAIRE, LED, ROADWAY, OUTPUT DESIGNATION G	1.0	1.0		
39	400W HPS	480V	45 FT.	LUMINAIRE, LED, ROADWAY, OUTPUT DESIGNATION H	1.0	1.0		
40	250W HPS	480V	45 FT.	LUMINAIRE, LED, ROADWAY, OUTPUT DESIGNATION G	1.0	1.0		
41	250W HPS	480V	45 FT.	LUMINAIRE, LED, ROADWAY, OUTPUT DESIGNATION G	1.0	1.0		
42	400W HPS	480V	45 FT.	LUMINAIRE, LED, ROADWAY, OUTPUT DESIGNATION H	1.0	1.0		
43	400W HPS	480V	45 FT.	LUMINAIRE, LED, ROADWAY, OUTPUT DESIGNATION H	1.0	1.0		
44	250W HPS	480V	45 FT.	LUMINAIRE, LED, ROADWAY, OUTPUT DESIGNATION G	1.0	1.0		
45	250W HPS	480V	45 FT.	LUMINAIRE, LED, ROADWAY, OUTPUT DESIGNATION G	1.0	1.0		
46	250W HPS	480V	45 FT.	LUMINAIRE, LED, ROADWAY, OUTPUT DESIGNATION G	1.0	1.0		
47	250W HPS	480V	45 FT.	LUMINAIRE, LED, ROADWAY, OUTPUT DESIGNATION G	1.0	1.0		
48	400W HPS	480V	45 FT.	LUMINAIRE, LED, ROADWAY, OUTPUT DESIGNATION H	1.0	1.0		
49	250W HPS	480V	45 FT.	LUMINAIRE, LED, ROADWAY, OUTPUT DESIGNATION G	1.0	1.0		
50	250W HPS	480V	45 FT.	LUMINAIRE, LED, ROADWAY, OUTPUT DESIGNATION G	1.0	1.0		
51	250W HPS	480V	45 FT.	LUMINAIRE, LED, ROADWAY, OUTPUT DESIGNATION G	1.0	1.0		
52	250W HPS	480V	45 FT.	LUMINAIRE, LED, ROADWAY, OUTPUT DESIGNATION G	1.0	1.0		
53	400W HPS	480V	45 FT.	LUMINAIRE, LED, ROADWAY, OUTPUT DESIGNATION H	1.0	1.0		
54	400W HPS	480V	45 FT.	LUMINAIRE, LED, ROADWAY, OUTPUT DESIGNATION H	1.0	1.0		
55	400W HPS	480V	45 FT.	LUMINAIRE, LED, ROADWAY, OUTPUT DESIGNATION H	1.0	1.0		
56	250W HPS	480V	45 FT.	LUMINAIRE, LED, ROADWAY, OUTPUT DESIGNATION G	1.0	1.0	1.0	
57	250W HPS	480V	45 FT.	LUMINAIRE, LED, ROADWAY, OUTPUT DESIGNATION G	1.0	1.0		
58	400W HPS	480V	45 FT.	LUMINAIRE, LED, ROADWAY, OUTPUT DESIGNATION H	1.0	1.0		
59	400W HPS	480V	45 FT.	LUMINAIRE, LED, ROADWAY, OUTPUT DESIGNATION H	1.0	1.0		
60	250W HPS	480V	45 FT.	LUMINAIRE, LED, ROADWAY, OUTPUT DESIGNATION G	1.0	1.0		
61	250W HPS	480V	45 FT.	LUMINAIRE, LED, ROADWAY, OUTPUT DESIGNATION G	1.0	1.0	1.0	
62	250W HPS	480V	45 FT.	LUMINAIRE, LED, ROADWAY, OUTPUT DESIGNATION G	1.0	1.0	1.0	
63	250W HPS	480V	45 FT.	LUMINAIRE, LED, ROADWAY, OUTPUT DESIGNATION G	1.0	1.0	1.0	
64	250W HPS	480V	45 FT.	LUMINAIRE, LED, ROADWAY, OUTPUT DESIGNATION G	1.0	1.0		

FURNISH 1 FT. ARM AND INSTALL ON EX. TENON TOP LIGHT POLE, FURNISH AND INSTALL NEW SURGE ARRESTOR, FUSEHOLDER, FUSES, AND LUMINAIRE WIRING

NOT TO SCALE

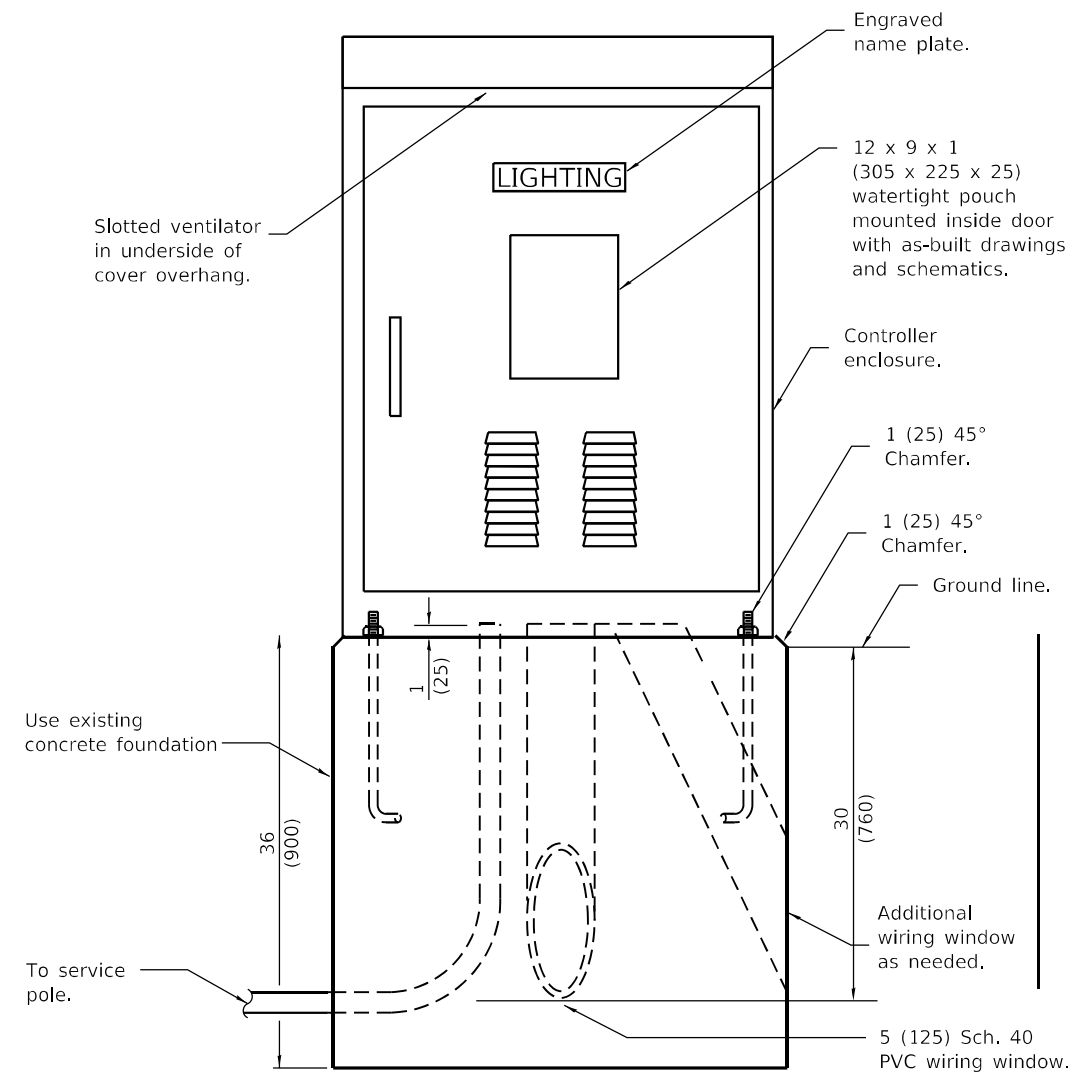
MODEL Path: \\...
FILE NAME: G:\COMMON\GENT\Transfer - Bureau\68G73 - Final\68G73 Lighting C4 2022 (2-9-22).dgn

USER NAME = howalter	DESIGNED -	REVISED -
	DRAWN -	REVISED -
PLOT SCALE = 206,2628' / in.	CHECKED -	REVISED -
PLOT DATE = 2/10/2022	DATE -	REVISED -

STATE OF ILLINOIS
DEPARTMENT OF TRANSPORTATION

PROPOSED LUMINAIRE SCHEDULE			
I-474 & US24/IL 29 - TAZEWELL COUNTY			
SCALE:	SHEET	OF	SHEETS
	STA.	TO	STA.

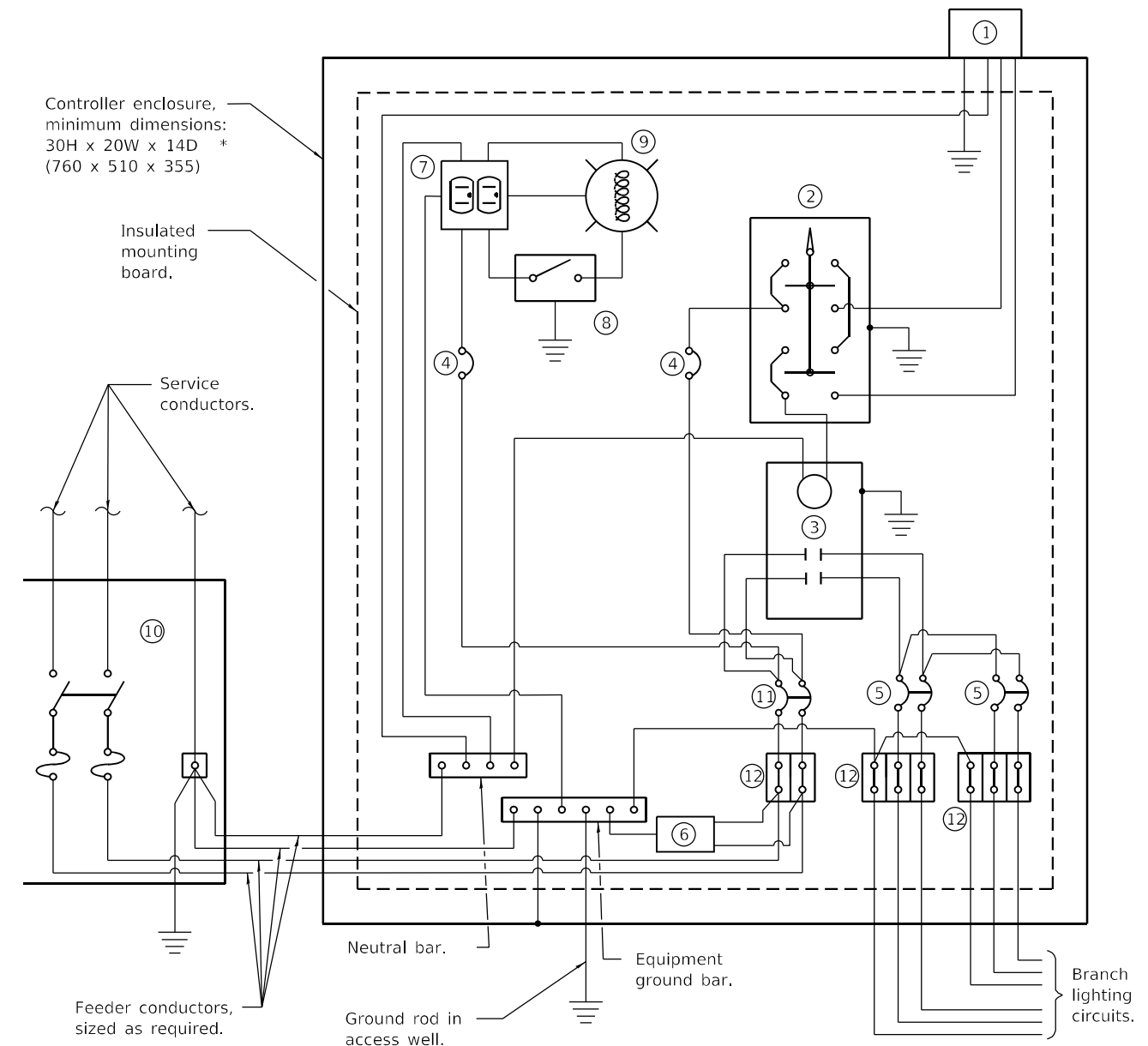
F.A.I. RTE.	SECTION	COUNTY	TOTAL SHEETS	SHEET NO.
474	90(6,106)L	TAZEWELL	20	8
CONTRACT NO. 68G73				
ILLINOIS FED. AID PROJECT				



**LIGHTING CONTROLLER
(480V/ 200A)**

THE COST OF THE UNDERGROUND SERVICE CABLE/ CONDUIT FROM THE EXISTING TRANSFORMER TO THE PROPOSED ELECTRICAL SERVICE AND SERVICE CABLE/ CONDUIT FROM THE ELECTRICAL SERVICE TO THE LIGHTING CONTROLLER SHALL BE INCLUDED IN THE COST OF THE PROPOSED ELECTRICAL SERVICE INSTALLATION, SPECIAL.

NOTE:
THE ELECTRIC SERVICE IS A 480V COLD SERVICE INSTALLATION. SEE PROPOSED ELECTRIC SERVICE INSTALLATION, SPECIAL DETAIL I-474 & US24/ IL 29 - TAZEWELL COUNTY SHEET FOR DETAILS.



CONTROL SCHEMATIC

- ① Photocell with integral surge arrester.
- ② HAND-OFF-AUTO selector switch.
- ③ 200 amp*, electrically held contactor.
- ④ 15 amp, 1-pole circuit breaker.
- ⑤ 30 amp*, 2-pole circuit breaker (QTY 5.0 PLUS 2 SPARE).
- ⑥ Surge arrester.
- ⑦ GFCI duplex receptacle.
- ⑧ Single-pole, single-throw switch.
- ⑨ LED light bulb, enclosed and gasketed with 800 lumen lamp.
- ⑩ Service disconnect switch - 2-pole, 3-wire, 200 amp*, fused at 200 amp*, solid neutral in NEMA 4X enclosure having lockable external handle.
- ⑪ 200 amp*, 2-pole circuit breaker.
- ⑫ Terminal block sized for conductors as shown on plans.

* Size larger as needed.

All dimensions are in inches (millimeters) unless otherwise shown.

MODEL: Default; FILE NAME: C:\COMMON\GENENT\Transfer - Bureau\68G73 - Final\Plan\68G73 Lighting CM 2022 (2-9-22).dgn

USER NAME = howalter	DESIGNED -	REVISED -
DRAWN -	REVISED -	
PLOT SCALE = 206,2628 ' / in.	CHECKED -	REVISED -
PLOT DATE = 2/10/2022	DATE -	REVISED -

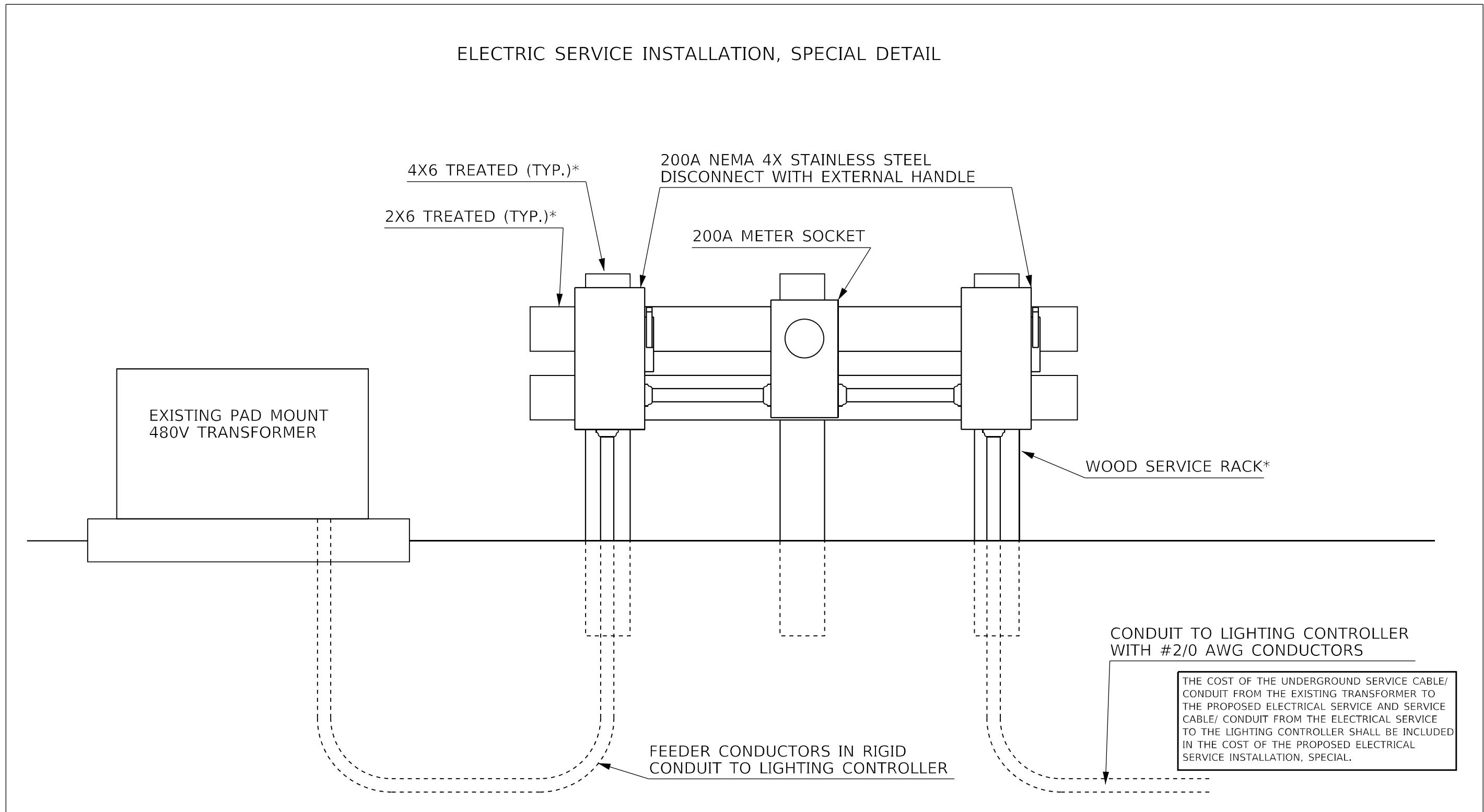
**STATE OF ILLINOIS
DEPARTMENT OF TRANSPORTATION**

**PROPOSED LIGHTING CONTROLLER & ELECTRIC SERVICE DETAILS
I-474 & US24/IL 29 - TAZEWELL COUNTY**

F.A.I. RTE.	SECTION	COUNTY	TOTAL SHEETS	SHEET NO.
474	90(6,106)L	TAZEWELL	20	9
CONTRACT NO. 68G73				
ILLINOIS FED. AID PROJECT				

NOT TO SCALE

ELECTRIC SERVICE INSTALLATION, SPECIAL DETAIL



* WOOD MAY BE REPLACED WITH COMPARABLE METAL STRUCTURE IF REQUIRED BY UTILITY COMPANY

NOT TO SCALE

MODEL: Default
FILE NAME: C:\COMMON\GEN\TRANSFER - Bureau\68G73 - Final\Plan\68G73 Lighting CM 2022 (2-9-22).dgn

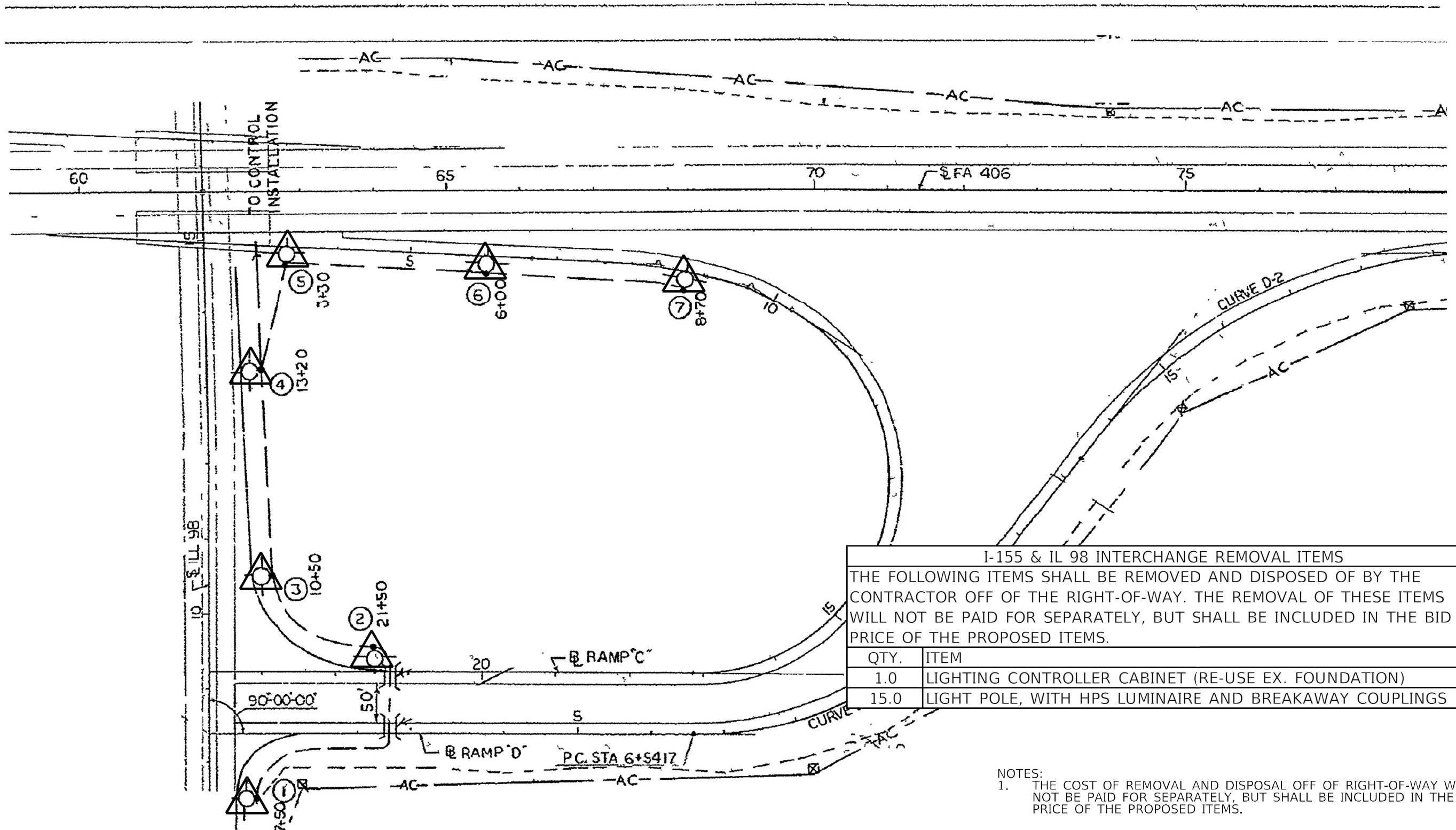
USER NAME = howaldier	DESIGNED -	REVISED -
	DRAWN -	REVISED -
PLOT SCALE = 206,2628 ' / in.	CHECKED -	REVISED -
PLOT DATE = 2/10/2022	DATE -	REVISED -

STATE OF ILLINOIS
DEPARTMENT OF TRANSPORTATION

PROPOSED ELECTRIC SERVICE INSTALLATION, SPECIAL DETAIL
I-474 & US24/IL 29 - TAZEWELL COUNTY

SCALE: SHEET OF SHEETS STA. TO STA.

F.A.I. RTE.	SECTION	COUNTY	TOTAL SHEETS	SHEET NO.
474	90(6,106)L	TAZEWELL	20	10
ILLINOIS FED. AID PROJECT			CONTRACT NO. 68G73	



I-155 & IL 98 INTERCHANGE REMOVAL ITEMS	
THE FOLLOWING ITEMS SHALL BE REMOVED AND DISPOSED OF BY THE CONTRACTOR OFF OF THE RIGHT-OF-WAY. THE REMOVAL OF THESE ITEMS WILL NOT BE PAID FOR SEPARATELY, BUT SHALL BE INCLUDED IN THE BID PRICE OF THE PROPOSED ITEMS.	
QTY.	ITEM
1.0	LIGHTING CONTROLLER CABINET (RE-USE EX. FOUNDATION)
15.0	LIGHT POLE, WITH HPS LUMINAIRE AND BREAKAWAY COUPLINGS

NOTES:
 1. THE COST OF REMOVAL AND DISPOSAL OFF OF RIGHT-OF-WAY WILL NOT BE PAID FOR SEPARATELY, BUT SHALL BE INCLUDED IN THE BID PRICE OF THE PROPOSED ITEMS.

EX. LIGHT POLE, LUMINAIRE AND COUPLINGS TO BE REMOVED
 EX. FOUNDATION TO REMAIN
 (LIGHT POLE NUMBER)

NOT TO SCALE

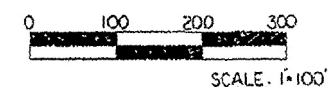
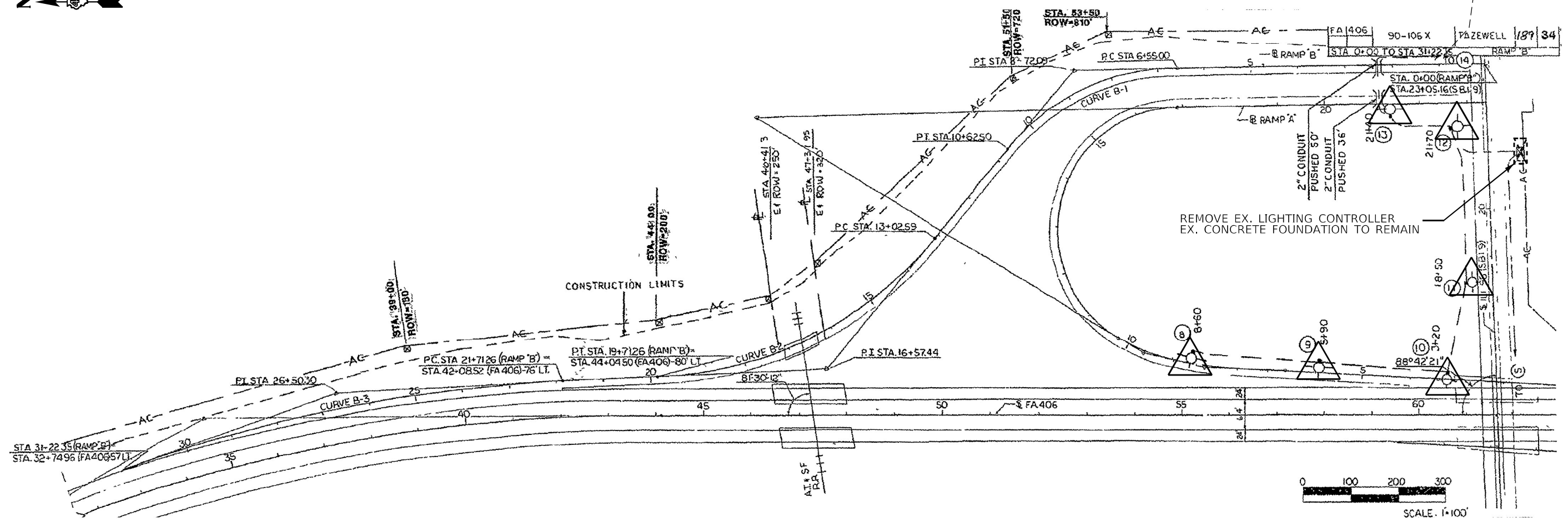
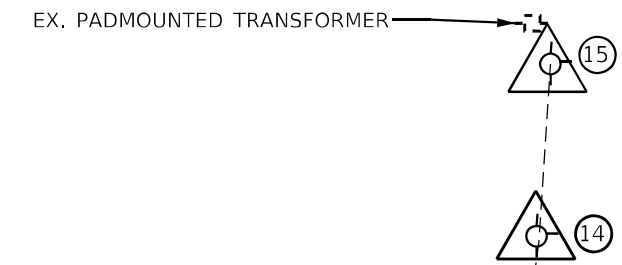
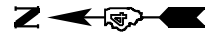
MODEL: Default
 FILE NAME: C:\COMMON\GENT\Transfer - Bureau\68G73 - Final\Plan\68G73 Lighting CM 2022 (2-9-22).dgn

USER NAME = howalter	DESIGNED -	REVISED -
	DRAWN -	REVISED -
PLOT SCALE = 206,2628' / in.	CHECKED -	REVISED -
PLOT DATE = 2/10/2022	DATE -	REVISED -

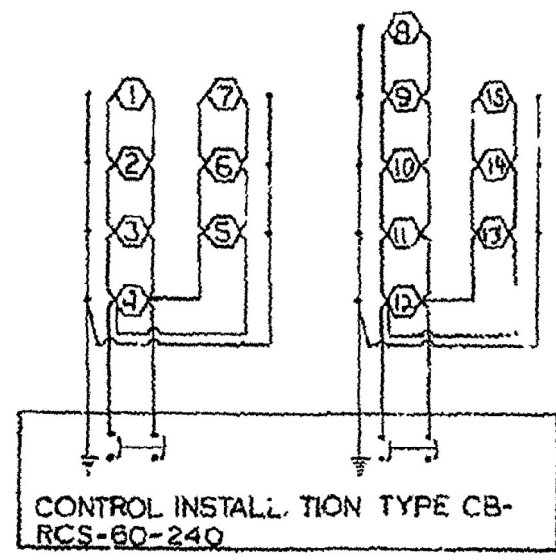
**STATE OF ILLINOIS
 DEPARTMENT OF TRANSPORTATION**

EXISTING LIGHTING PLANS & REMOVAL ITEMS			
I-155 & IL 98 - TAZEWELL COUNTY			
SCALE:	SHEET	OF SHEETS	STA. TO STA.

F.A.I. RTE.	SECTION	COUNTY	TOTAL SHEETS	SHEET NO.
155	90(6,106)L	TAZEWELL	20	11
CONTRACT NO. 68G73				
ILLINOIS FED. AID PROJECT				



 EX. LIGHT POLE, LUMINAIRE AND COUPLINGS TO BE REMOVED
 EX. FOUNDATION TO REMAIN
 (LIGHT POLE NUMBER)



NOTES:
 1. THE COST OF REMOVAL AND DISPOSAL OFF OF RIGHT-OF-WAY WILL NOT BE PAID FOR SEPARATELY, BUT SHALL BE INCLUDED IN THE BID PRICE OF THE PROPOSED ITEMS.

NOT TO SCALE

MODEL: Default
 FILE NAME: G:\COMMON\GENTTransfer - Bureau\68G73 - Final\Plan\68G73 Lighting C4 2022 (2-9-22).dgn

USER NAME = howalter	DESIGNED -	REVISED -
DRAWN -	REVISED -	
PLOT SCALE = 206,2628' / in.	CHECKED -	REVISED -
PLOT DATE = 2/10/2022	DATE -	REVISED -

STATE OF ILLINOIS
DEPARTMENT OF TRANSPORTATION

EXISTING LIGHTING PLANS & REMOVAL ITEMS - CONTINUED			
I-155 & IL 98 - TAZEWELL COUNTY			
SCALE:	SHEET	OF SHEETS	STA. TO STA.

F.A.I. RTE.	SECTION	COUNTY	TOTAL SHEETS	SHEET NO.
155	90(6,106)L	TAZEWELL	20	12
ILLINOIS FED. AID PROJECT			CONTRACT NO. 68G73	

LUMINAIRE SCHEDULE
I-155 & IL 98

POLE NUMBER	EXISTING LUMINAIRE TYPE	VOLTAGE	MOUNTING HEIGHT	LIGHT POLE, GALVANIZED STEEL, 45 FT. M.H., TENON MOUNT QTY.	PROPOSED LUMINAIRE TYPE	PROPOSED LUMINAIRE QTY.	LUMINAIRE MOUNTING BRACKET - SPECIAL QTY.	INSTALLATION NOTES
1	250W HPS	240V	45 FT.	1.0	LUMINAIRE, LED, ROADWAY, OUTPUT DESIGNATION G	1.0	1.0	INSTALL ON PROP. BREAKWAY COUPLINGS ON EX. FOUNDATION. FURNISH 1 FT. ARM AND INSTALL ON PROP. TENON TOP LIGHT POLE, FURNISH AND INSTALL NEW SURGE ARRESTOR, FUSEHOLDER, FUSES, AND LUMINAIRE WIRING
2	250W HPS	240V	45 FT.	1.0	LUMINAIRE, LED, ROADWAY, OUTPUT DESIGNATION G	1.0	1.0	
3	250W HPS	240V	45 FT.	1.0	LUMINAIRE, LED, ROADWAY, OUTPUT DESIGNATION G	1.0	1.0	
4	250W HPS	240V	45 FT.	1.0	LUMINAIRE, LED, ROADWAY, OUTPUT DESIGNATION G	1.0	1.0	
5	250W HPS	240V	45 FT.	1.0	LUMINAIRE, LED, ROADWAY, OUTPUT DESIGNATION G	1.0	1.0	
6	250W HPS	240V	45 FT.	1.0	LUMINAIRE, LED, ROADWAY, OUTPUT DESIGNATION G	1.0	1.0	
7	250W HPS	240V	45 FT.	1.0	LUMINAIRE, LED, ROADWAY, OUTPUT DESIGNATION G	1.0	1.0	
8	250W HPS	240V	45 FT.	1.0	LUMINAIRE, LED, ROADWAY, OUTPUT DESIGNATION G	1.0	1.0	
9	250W HPS	240V	45 FT.	1.0	LUMINAIRE, LED, ROADWAY, OUTPUT DESIGNATION G	1.0	1.0	
10	250W HPS	240V	45 FT.	1.0	LUMINAIRE, LED, ROADWAY, OUTPUT DESIGNATION G	1.0	1.0	
11	250W HPS	240V	45 FT.	1.0	LUMINAIRE, LED, ROADWAY, OUTPUT DESIGNATION G	1.0	1.0	
12	250W HPS	240V	45 FT.	1.0	LUMINAIRE, LED, ROADWAY, OUTPUT DESIGNATION G	1.0	1.0	
13	250W HPS	240V	45 FT.	1.0	LUMINAIRE, LED, ROADWAY, OUTPUT DESIGNATION G	1.0	1.0	
14	250W HPS	240V	45 FT.	1.0	LUMINAIRE, LED, ROADWAY, OUTPUT DESIGNATION G	1.0	1.0	
15	250W HPS	240V	45 FT.	1.0	LUMINAIRE, LED, ROADWAY, OUTPUT DESIGNATION G	1.0	1.0	

MODEL Default
FILE NAME: G:\COMMON\GENTTransfer - Bureau\68G73 - Final\Bbox\68G73 Lighting CD 2022 (2-9-22).dgn

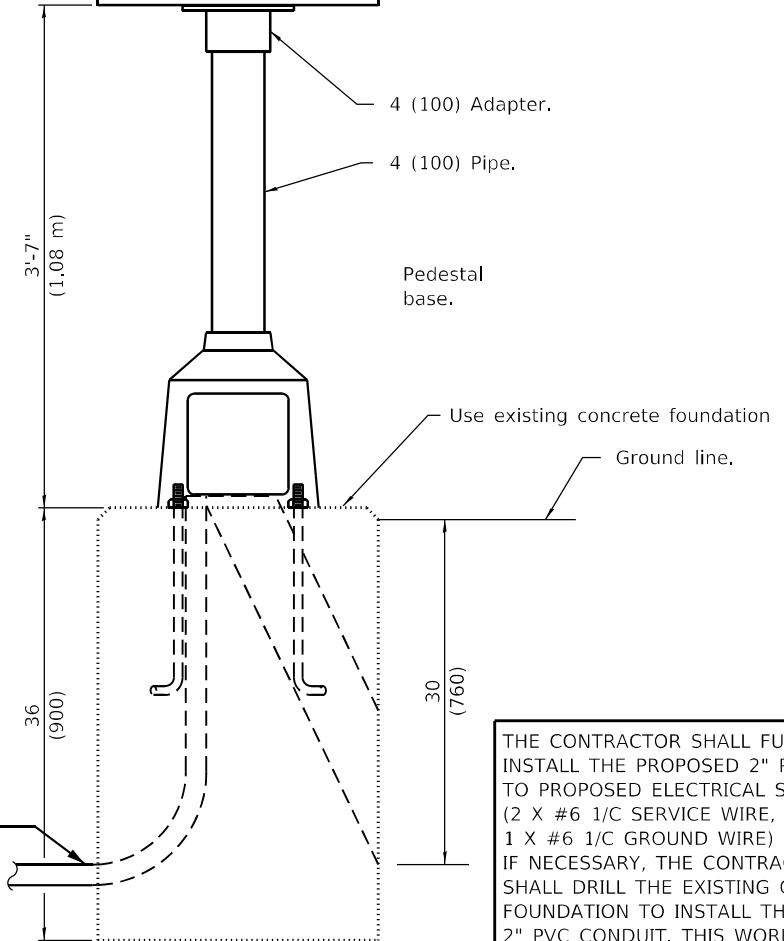
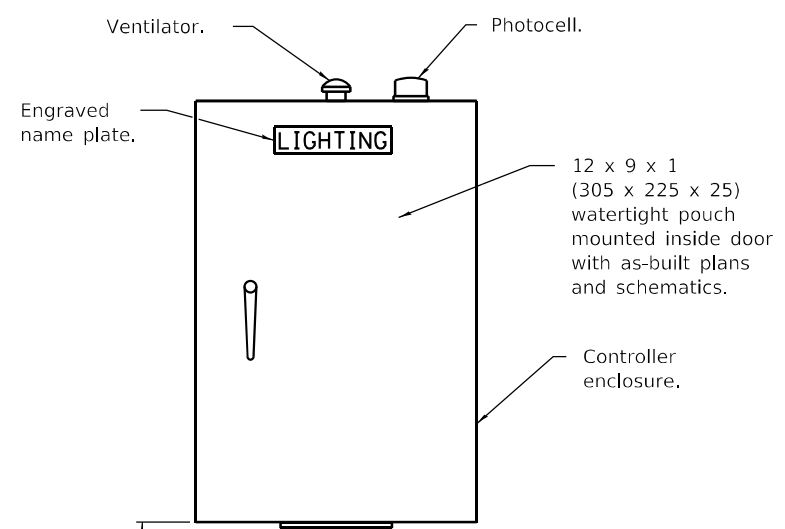
USER NAME = howaldt	DESIGNED -	REVISED -
	DRAWN -	REVISED -
PLOT SCALE = 206,2628 ' / in.	CHECKED -	REVISED -
PLOT DATE = 2/10/2022	DATE -	REVISED -

STATE OF ILLINOIS
DEPARTMENT OF TRANSPORTATION

PROPOSED LUMINAIRE SCHEDULE
I-155 & IL 98 - TAZEWELL COUNTY

SCALE: SHEET OF SHEETS STA. TO STA.

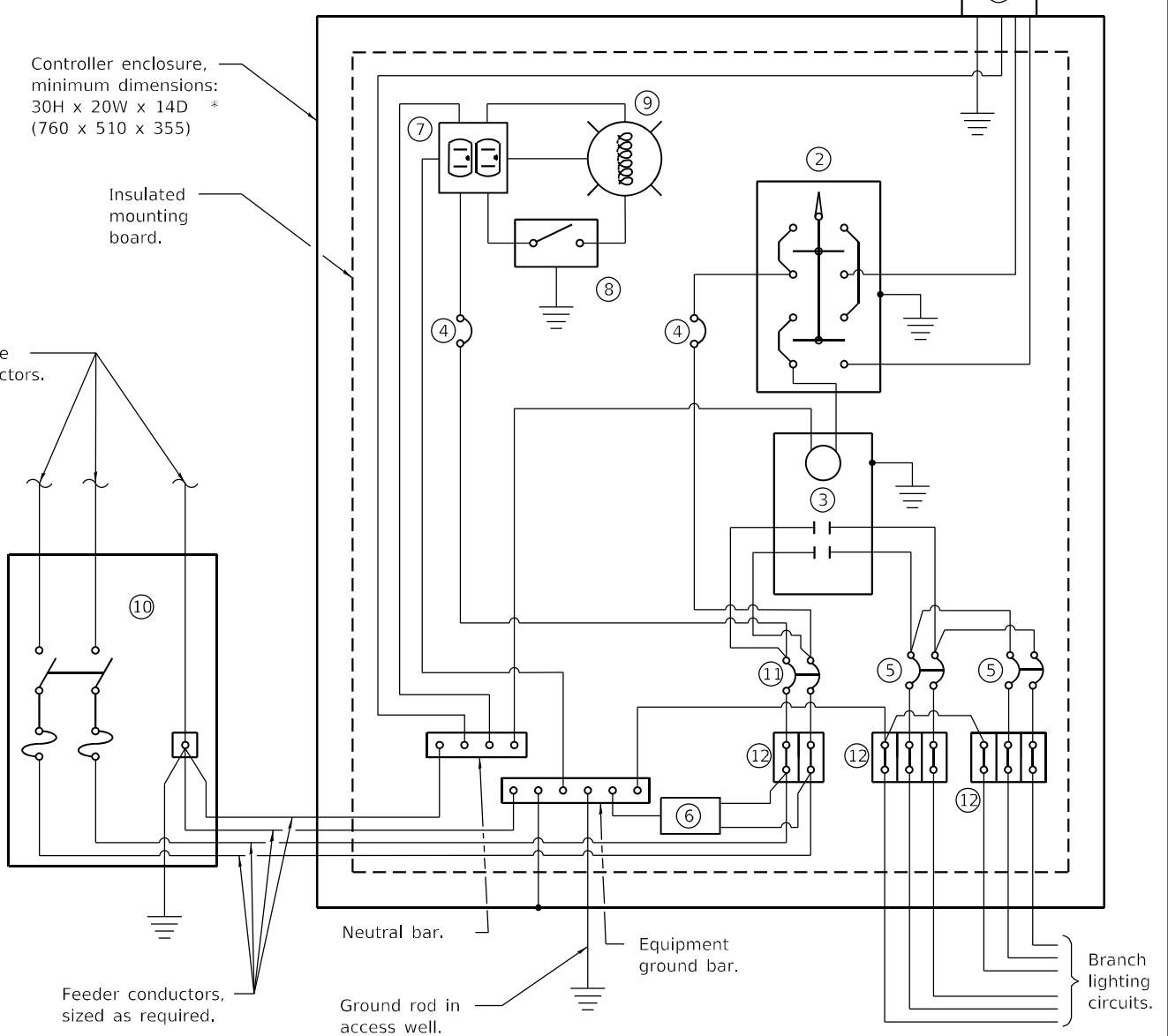
F.A.I. RTE.	SECTION	COUNTY	TOTAL SHEETS	SHEET NO.
155	90(6,106)L	TAZEWELL	20	13
CONTRACT NO. 68G73			ILLINOIS FED. AID PROJECT	



LIGHTING CONTROLLER

THE CONTRACTOR SHALL FURNISH AND INSTALL THE PROPOSED 2" PVC CONDUIT TO PROPOSED ELECTRICAL SERVICE (2 X #6 1/C SERVICE WIRE, 1 X #6 1/C GROUND WIRE) IF NECESSARY, THE CONTRACTOR SHALL DRILL THE EXISTING CONCRETE FOUNDATION TO INSTALL THE PROP. 2" PVC CONDUIT. THIS WORK WILL NOT BE PAID FOR SEPARATELY, BUT SHALL BE INCLUDED IN THE BID PRICE OF THE ELECTRICAL SERVICE INSTALLATION.

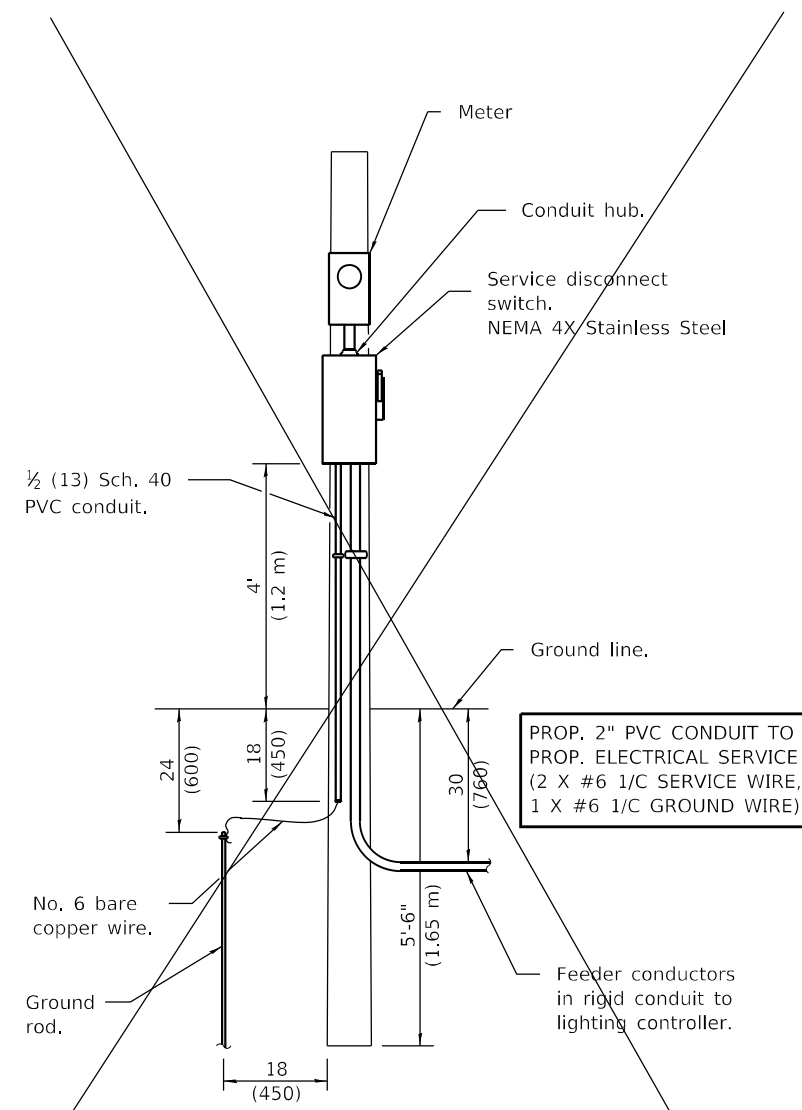
THE COST OF THE UNDERGROUND SERVICE CABLE/ CONDUIT FROM THE EXISTING TRANSFORMER TO THE PROPOSED ELECTRICAL SERVICE AND SERVICE CABLE/ CONDUIT FROM THE ELECTRICAL SERVICE TO THE LIGHTING CONTROLLER SHALL BE INCLUDED IN THE COST OF THE PROPOSED ELECTRICAL SERVICE INSTALLATION.



CONTROL SCHEMATIC

- ① Photocell with integral surge arrester.
 - ② HAND-OFF-AUTO selector switch.
 - ③ 60 amp*, electrically held contactor.
 - ④ 15 amp, 1-pole circuit breaker.
 - ⑤ 30 amp*, 2-pole circuit breaker (QTY 2.0 PLUS 2 SPARE).
 - ⑥ Surge arrester.
 - ⑦ GFCI duplex receptacle.
 - ⑧ Single-pole, single-throw switch.
 - ⑨ LED light bulb, enclosed and gasketed with 800 lumen lamp.
 - ⑩ Service disconnect switch - 2-pole, 3-wire, 60 amp*, fused at 60 amp*, solid neutral in NEMA 4X enclosure having lockable external handle.
 - ⑪ 60 amp*, 2-pole circuit breaker.
 - ⑫ Terminal block sized for conductors as shown on plans.
- * Size larger as needed.

All dimensions are in inches (millimeters) unless otherwise shown.



ELECTRIC SERVICE INSTALLATION

(Typical overhead service shown. Cut pole off for underground service and treat cut surface with preservative. Consult utility company standards for exact requirements.)
* Size larger as needed.

MODEL: Default
FILE NAME: C:\COMMON\GEN\Transfer - Bureau\68G73 - Final\Plan\68G73 Lighting.dwg 2022 (2:59:21)dm

USER NAME = howalter	DESIGNED -	REVISED -
PLOT SCALE = 206,2628 ' / in.	DRAWN -	REVISED -
PLOT DATE = 2/10/2022	CHECKED -	REVISED -
	DATE -	REVISED -

**STATE OF ILLINOIS
DEPARTMENT OF TRANSPORTATION**

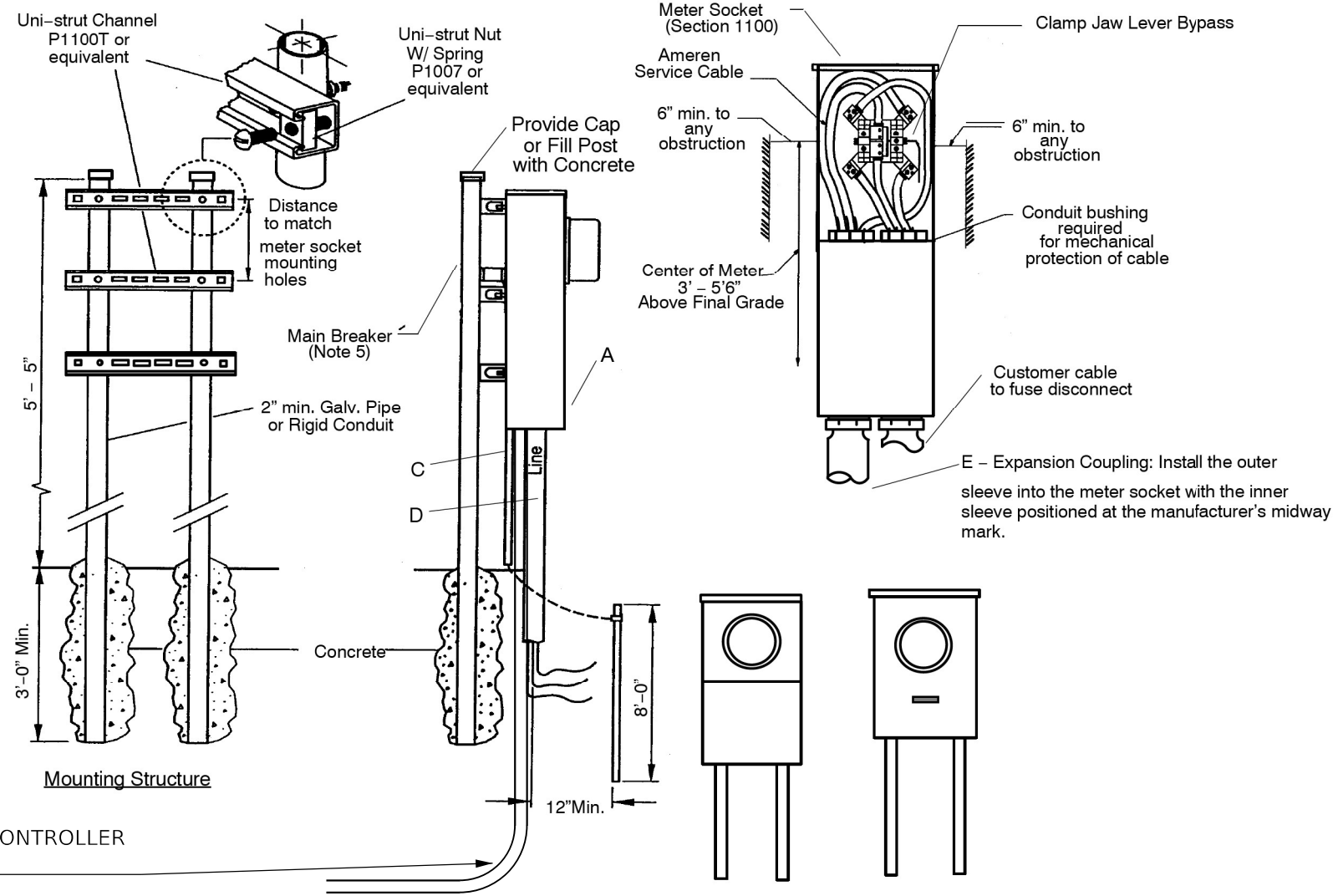
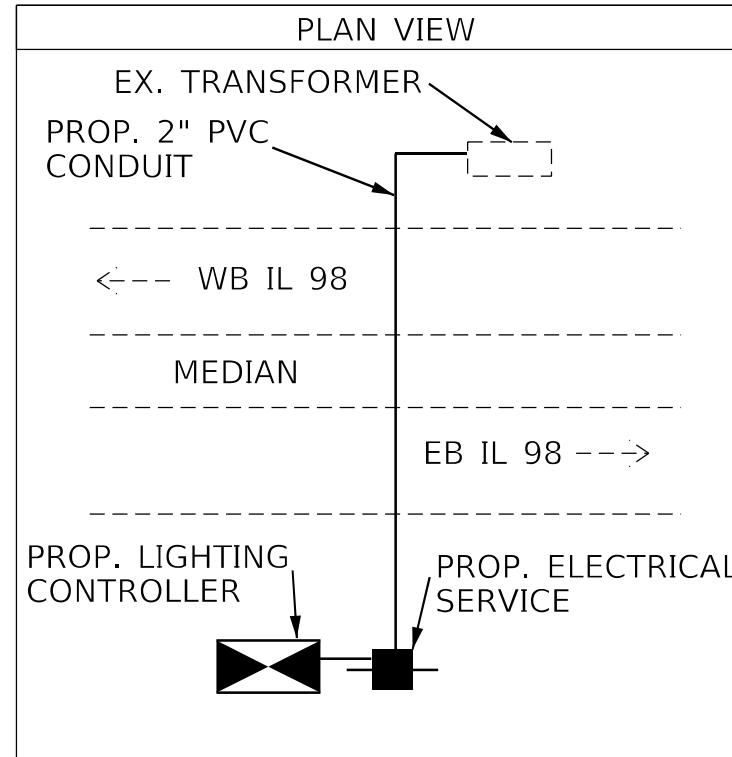
**PROPOSED LIGHTING CONTROLLER DETAIL
I-155 & IL 98 - TAZEWELL COUNTY**

SCALE: SHEET OF SHEETS STA. TO STA.

F.A.I. RTE.	SECTION	COUNTY	TOTAL SHEETS	SHEET NO.
155	90(6,106)L	TAZEWELL	20	14
CONTRACT NO. 68G73				
ILLINOIS FED. AID PROJECT				

NOT TO SCALE

ELECTRIC SERVICE INSTALLATION



2" PVC CONDUIT TO LIGHTING CONTROLLER WITH #6 AWG CONDUCTORS

THE COST OF THE UNDERGROUND SERVICE CABLE/ CONDUIT FROM THE EXISTING TRANSFORMER TO THE PROPOSED ELECTRICAL SERVICE AND SERVICE CABLE/ CONDUIT FROM THE ELECTRICAL SERVICE TO THE LIGHTING CONTROLLER SHALL BE INCLUDED IN THE COST OF THE PROPOSED ELECTRICAL SERVICE INSTALLATION.

THE CONTRACTOR SHALL VERIFY UTILITY COMPANY SERVICE INSTALLATION REQUIREMENTS, THERE WILL BE NO ADDITIONAL COMPENSATION TO ACCOMODATE ADDITIONAL REQUIREMENTS.

THE PROPOSED ELECTRICAL SERVICE INSTALLATION SHALL BE LOCATED EAST OF THE PROPOSED LIGHTING CONTROLLER ACCORDING TO ALL UTILITY COMPANY REQUIREMENTS.

Notes		Description
5, 6	A	Meter Socket, Clamp Jaw Lever Bypass
	C	1/2 in. PVC Conduit
	D	Conduit-Electrical Grade Sch 40 PVC or Sch 80 PVC if subject to physical damage
8	E	Expansion Coupling, Sch 40 PVC, 8 in. fall

NOTES:

- The installation of all entrance equipment, conductors and conduit shall conform to local codes or the latest NEC. Requirements.
- All material shall be furnished and installed by customer.
- NEC approved ground required.
- Different arrangements of the service equipment (fuse/breaker box) may be used side-by-side or below meter.
- Refer to Section 1100 for meter sockets or combo units requirement.
- Instrument rated meter sockets **In MO:** stock #40 04 246-8 Terminal and stock #40 04 245 - 13 Terminal; **In IL:** stock #40 54 378 - 8 Terminal and stock #40 54 353 - 13 Terminal
- Refer to Section 200 for meter mounting height.
- When an expansion coupling is required, it should be installed so that the outer sleeve into the meter socket with the inner sleeve positioned at the manufacturer's midway mark.

NOT TO SCALE

MODEL: Default
FILE NAME: G:\COMMON\GEN\Transfer - Bureau\68G73 - Final\Plan\68G73 Lighting C4 2022 (2-9-22).dgn

USER NAME = howalter	DESIGNED -	REVISED -
PLOT SCALE = 206,2628' / in.	DRAWN -	REVISED -
PLOT DATE = 2/10/2022	CHECKED -	REVISED -
	DATE -	REVISED -

**STATE OF ILLINOIS
DEPARTMENT OF TRANSPORTATION**

**PROPOSED ELECTRIC SERVICE DETAIL
I-155 & IL 98 - TAZEWELL COUNTY**

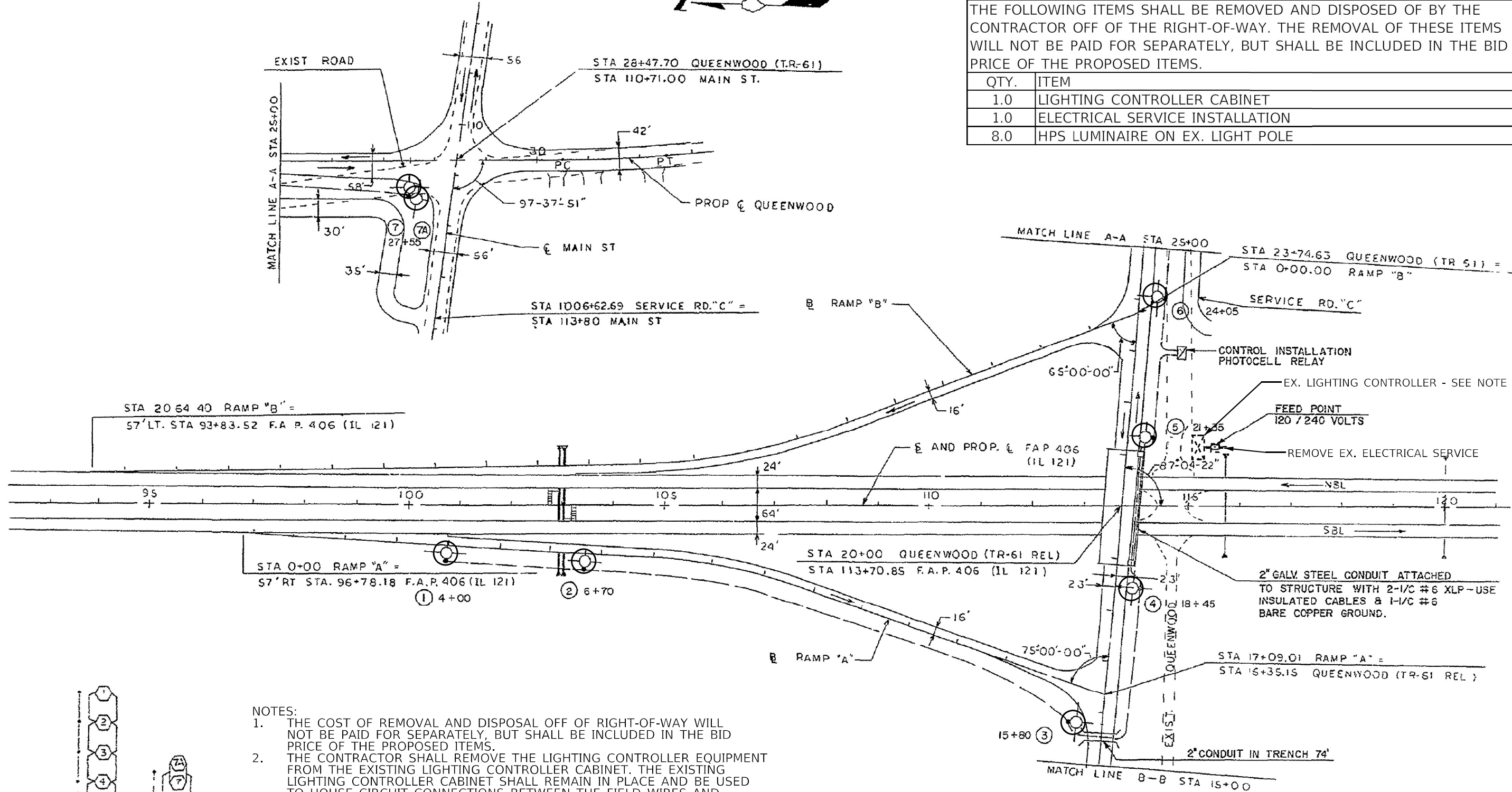
SCALE: SHEET OF SHEETS STA. TO STA.

F.A.I. RTE.	SECTION	COUNTY	TOTAL SHEETS	SHEET NO.
155	90(6,106)L	TAZEWELL	20	15
			CONTRACT NO. 68G73	
			ILLINOIS FED. AID PROJECT	

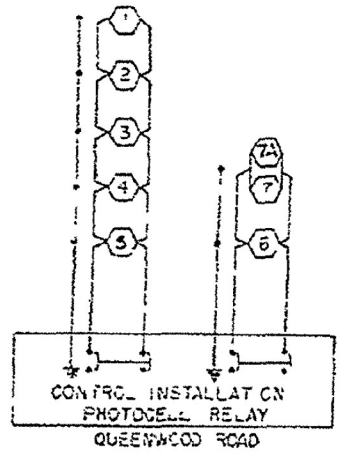
I-155 & QUEENWOOD RD. INTERCHANGE REMOVAL ITEMS

THE FOLLOWING ITEMS SHALL BE REMOVED AND DISPOSED OF BY THE CONTRACTOR OFF OF THE RIGHT-OF-WAY. THE REMOVAL OF THESE ITEMS WILL NOT BE PAID FOR SEPARATELY, BUT SHALL BE INCLUDED IN THE BID PRICE OF THE PROPOSED ITEMS.

QTY.	ITEM
1.0	LIGHTING CONTROLLER CABINET
1.0	ELECTRICAL SERVICE INSTALLATION
8.0	HPS LUMINAIRE ON EX. LIGHT POLE



- NOTES:
1. THE COST OF REMOVAL AND DISPOSAL OFF OF RIGHT-OF-WAY WILL NOT BE PAID FOR SEPARATELY, BUT SHALL BE INCLUDED IN THE BID PRICE OF THE PROPOSED ITEMS.
 2. THE CONTRACTOR SHALL REMOVE THE LIGHTING CONTROLLER EQUIPMENT FROM THE EXISTING LIGHTING CONTROLLER CABINET. THE EXISTING LIGHTING CONTROLLER CABINET SHALL REMAIN IN PLACE AND BE USED TO HOUSE CIRCUIT CONNECTIONS BETWEEN THE FIELD WIRES AND THE PROPOSED LIGHTING CONTROLLER.



○ EX. LUMINAIRE TO BE REMOVED
 ○ EX. LIGHT POLE, BREAKAWAY COUPLINGS & FOUNDATION TO REMAIN

NOT TO SCALE

MODEL Path: ... Final Plan: 68G73 Lighting C4 2022 (2-9-22).dgn

USER NAME = howalter	DESIGNED -	REVISED -
PLOT SCALE = 206,2628' / in.	CHECKED -	REVISED -
PLOT DATE = 2/10/2022	DATE -	REVISED -

STATE OF ILLINOIS
 DEPARTMENT OF TRANSPORTATION

EXISTING LIGHTING PLANS & REMOVAL ITEMS	
I-155 & QUEENWOOD RD. - TAZEWELL COUNTY	
SCALE:	SHEET OF SHEETS STA. TO STA.

F.A.I. RTE.	SECTION	COUNTY	TOTAL SHEETS	SHEET NO.
155	90(6,106)L	TAZEWELL	20	16
CONTRACT NO. 68G73				
ILLINOIS FED. AID PROJECT				

LUMINAIRE SCHEDULE
I-155 & QUEENWOOD

POLE NUMBER	EXISTING LUMINAIRE TYPE	VOLTAGE	MOUNTING HEIGHT	PROPOSED LUMINAIRE TYPE	PROPOSED LUMINAIRE QTY.	LUMINAIRE MOUNTING BRACKET - SPECIAL QTY.	INSTALLATION NOTES
1	250W HPS		45 FT.	LUMINAIRE, LED, ROADWAY, OUTPUT DESIGNATION G	1.0	1.0	FURNISH 1 FT. ARM (PER LUMINAIRE) AND INSTALL ON EX. TENON TOP LIGHT POLE, FURNISH AND INSTALL NEW SURGE ARRESTOR, FUSEHOLDER, FUSES, AND LUMINAIRE WIRING
2	250W HPS		45 FT.	LUMINAIRE, LED, ROADWAY, OUTPUT DESIGNATION G	1.0	1.0	
3	250W HPS		45 FT.	LUMINAIRE, LED, ROADWAY, OUTPUT DESIGNATION G	1.0	1.0	
4	250W HPS		45 FT.	LUMINAIRE, LED, ROADWAY, OUTPUT DESIGNATION G	1.0	1.0	
5	250W HPS		45 FT.	LUMINAIRE, LED, ROADWAY, OUTPUT DESIGNATION G	1.0	1.0	
6	250W HPS		45 FT.	LUMINAIRE, LED, ROADWAY, OUTPUT DESIGNATION G	1.0	1.0	
7	250W HPS X 2		45 FT.	LUMINAIRE, LED, ROADWAY, OUTPUT DESIGNATION G X 2	2.0	2.0	

MODEL: Default
FILE NAME: G:\COMMON\GENTTransfer - Bureau\68G73 - Final\Plan\68G73 Lighting CD 2022 (2-9-22).dgn

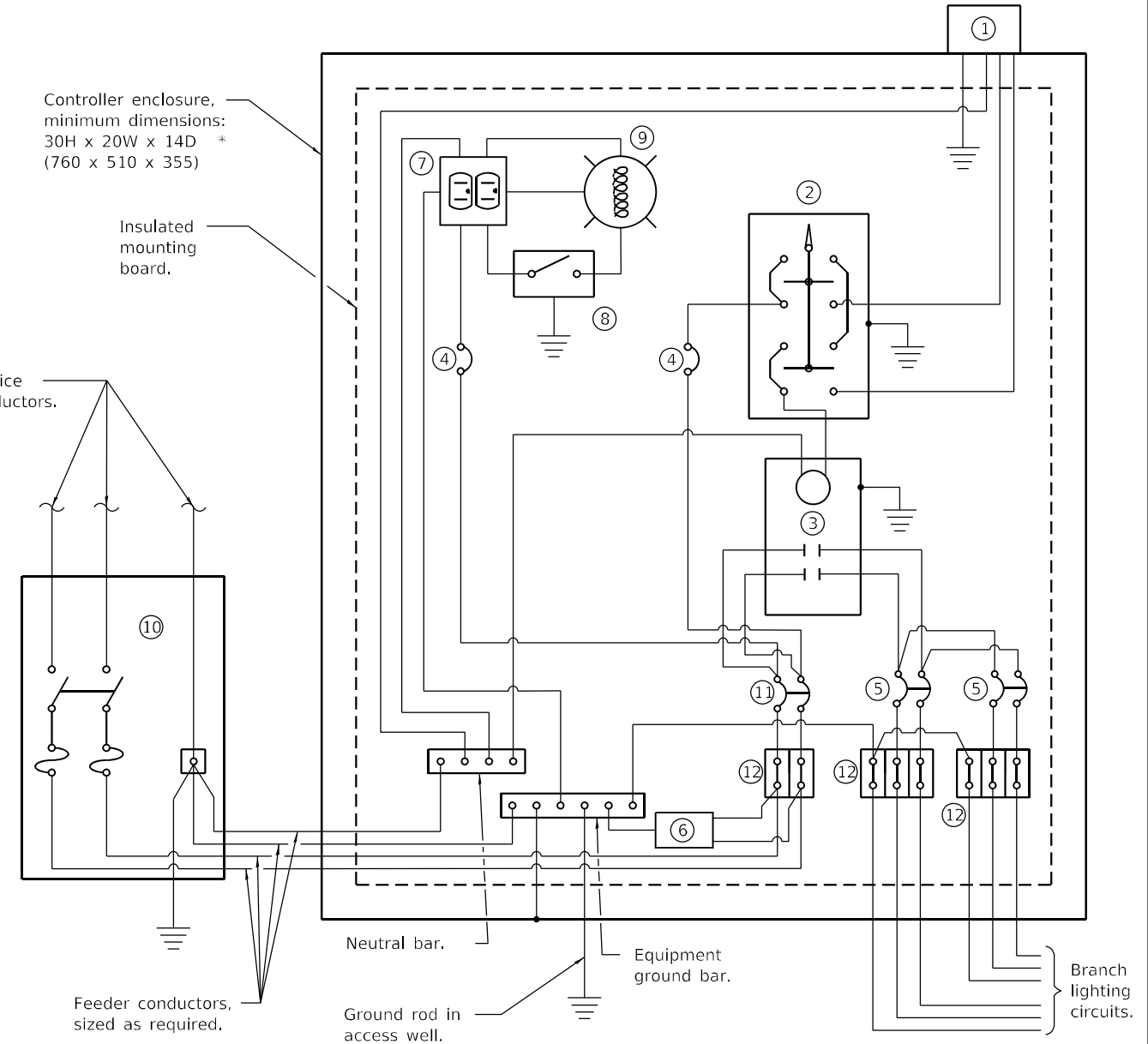
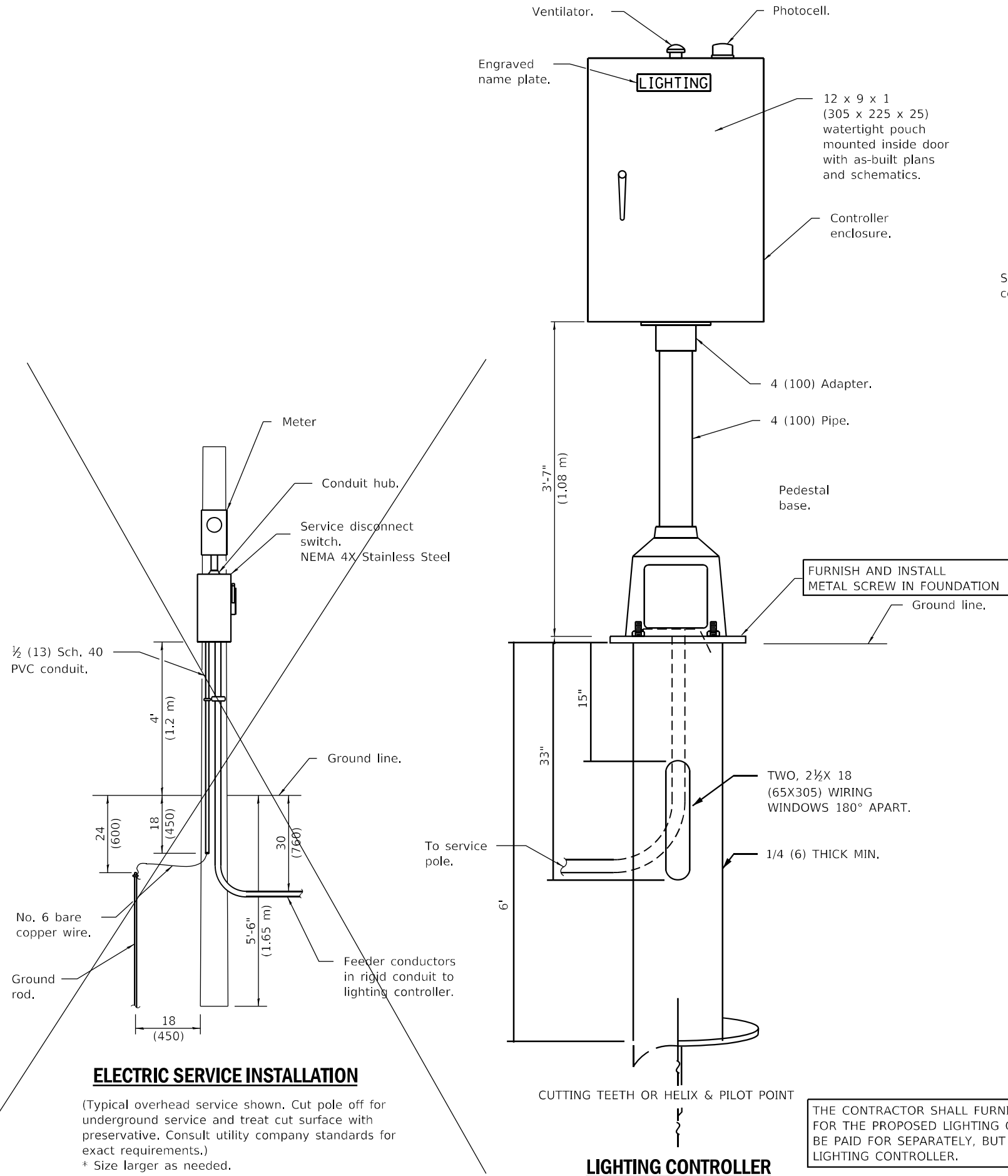
USER NAME = howaldt	DESIGNED -	REVISED -
	DRAWN -	REVISED -
PLOT SCALE = 206,2628 ' / in.	CHECKED -	REVISED -
PLOT DATE = 2/10/2022	DATE -	REVISED -

**STATE OF ILLINOIS
DEPARTMENT OF TRANSPORTATION**

**PROPOSED LUMINAIRE SCHEDULE
I-155 & QUEENWOOD RD. - TAZEWELL COUNTY**

SCALE: SHEET OF SHEETS STA. TO STA.

F.A.I. RTE.	SECTION	COUNTY	TOTAL SHEETS	SHEET NO.
155	90(6,106)L	TAZEWELL	20	17
CONTRACT NO. 68G73			ILLINOIS FED. AID PROJECT	



CONTROL SCHEMATIC

- ① Photocell with integral surge arrester.
 - ② HAND-OFF-AUTO selector switch.
 - ③ 60 amp*, electrically held contactor.
 - ④ 15 amp, 1-pole circuit breaker.
 - ⑤ 30 amp*, 2-pole circuit breaker (QTY 2.0 PLUS 2 SPARE).
 - ⑥ Surge arrester.
 - ⑦ GFCI duplex receptacle.
 - ⑧ Single-pole, single-throw switch.
 - ⑨ LED light bulb, enclosed and gasketed with 800 lumen lamp.
 - ⑩ Service disconnect switch - 2-pole, 3-wire, 60 amp*, fused at 60 amp*, solid neutral in NEMA 4X enclosure having lockable external handle.
 - ⑪ 60 amp*, 2-pole circuit breaker.
 - ⑫ Terminal block sized for conductors as shown on plans.
- * Size larger as needed.

All dimensions are in inches (millimeters) unless otherwise shown.

THE CONTRACTOR SHALL FURNISH AND INSTALL A METAL SCREW IN FOUNDATION FOR THE PROPOSED LIGHTING CONTROLLER INSTALLATION. THIS WORK WILL NOT BE PAID FOR SEPARATELY, BUT SHALL BE INCLUDED IN THE BID PRICE OF THE LIGHTING CONTROLLER.

ELECTRIC SERVICE INSTALLATION

(Typical overhead service shown. Cut pole off for underground service and treat cut surface with preservative. Consult utility company standards for exact requirements.)
* Size larger as needed.

LIGHTING CONTROLLER

**STATE OF ILLINOIS
DEPARTMENT OF TRANSPORTATION**

**PROPOSED LIGHTING CONTROLLER DETAIL
I-155 & QUEENWOOD RD. - TAZEWELL COUNTY**

USER NAME = howaldier	DESIGNED -	REVISED -
PLOT SCALE = 206,2628 ' / in.	DRAWN -	REVISED -
PLOT DATE = 2/10/2022	CHECKED -	REVISED -
	DATE -	REVISED -

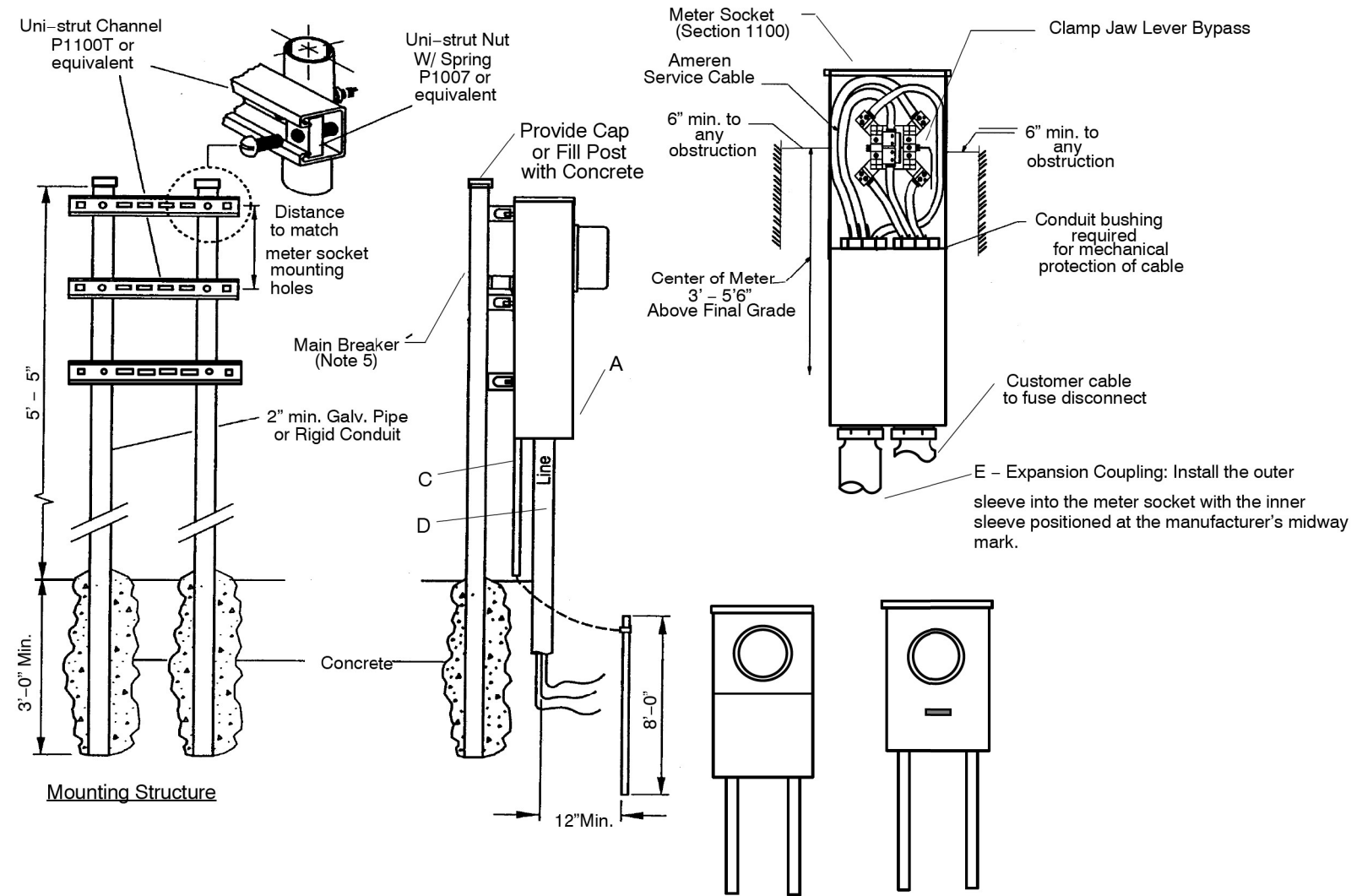
SCALE: SHEET OF SHEETS STA. TO STA.

F.A.I. RTE.	SECTION	COUNTY	TOTAL SHEETS	SHEET NO.
155	90(6,106)L	TAZEWELL	20	18
CONTRACT NO. 68G73				
ILLINOIS FED. AID PROJECT				

NOT TO SCALE

MODEL Path: FILE NAME: G:\COMMON\GEN\Transfer - Bureau\68G73 - Final\Plan\68G73 Lighting CM 2022 (2-9-22).dgn

ELECTRIC SERVICE INSTALLATION



Notes		Description
5, 6	A	Meter Socket, Clamp Jaw Lever Bypass
	C	½ in. PVC Conduit
	D	Conduit—Electrical Grade Sch 40 PVC or Sch 80 PVC if subject to physical damage
8	E	Expansion Coupling, Sch 40 PVC, 8 in. fall

NOTES:

- The installation of all entrance equipment, conductors and conduit shall conform to local codes or the latest NEC. Requirements.
- All material shall be furnished and installed by customer.
- NEC approved ground required.
- Different arrangements of the service equipment (fuse/breaker box) may be used side-by-side or below meter.
- Refer to Section 1100 for meter sockets or combo units requirement.
- Instrument rated meter sockets **In MO:** stock #40 04 246-8 Terminal and stock #40 04 245 - 13 Terminal; **In IL:** stock #40 54 378 - 8 Terminal and stock #40 54 353 - 13 Terminal
- Refer to Section 200 for meter mounting height.
- When an expansion coupling is required, it should be installed so that the outer sleeve into the meter socket with the inner sleeve positioned at the manufacturer's midway mark.

NOT TO SCALE

MODEL Path: \\... COMMON\COMMON\TRANSFER - Bureau\68G73 - Final\68G73 Lighting C4 2022 (2-9-22).dgn

USER NAME = howalter	DESIGNED -	REVISED -
	DRAWN -	REVISED -
PLOT SCALE = 206,2628' / in.	CHECKED -	REVISED -
PLOT DATE = 2/10/2022	DATE -	REVISED -

**STATE OF ILLINOIS
DEPARTMENT OF TRANSPORTATION**

**PROPOSED ELECTRIC SERVICE DETAIL
I-155 & QUEENWOOD RD. - TAZEWELL COUNTY**

SCALE: SHEET OF SHEETS STA. TO STA.

F.A.I. RTE.	SECTION	COUNTY	TOTAL SHEETS	SHEET NO.
155	90(6,106)L	TAZEWELL	20	19
			CONTRACT NO. 68G73	
ILLINOIS FED. AID PROJECT				



Luminaire Performance Table



Project

Table with 4 columns: Date, Contract Number, Section Number, County. Values: 02/09/22, 68G73, 90(6,106)L, Tazewell

Table with 2 columns: Marked Route Number, Municipality. Values: I-474, I-155, Tazewell County

Roadway

Table with 5 columns: Lane Width, # of Lanes, Median Width, I.E.S. Surface Classification, Q-Zero Value. Values: 12 ft, 3, N/A, R3, 0.07

Structure

Table with 4 columns: Mounting Height, Arm Length, Set-Back, Number of Luminaires. Values: 45.0 FT., 1.0 FT., 30 FT., N/A

Luminaire

Table with 4 columns: Description, I.E.S. Lateral Distribution, I.E.S. Vertical Distribution, Total Light Loss Factor (LLF). Values: LED, OUTPUT DESIGNATION G, TYPE II, MEDIUM, 0.7

Layout

Table with 2 columns: Spacing (to Nearest 5 ft), Configuration. Values: 280 FT., ONE SIDED

Performance

Table with 4 columns: Average Illuminance, Uniformity Ratio, Average Luminance, Veiling Luminance Ratio. Values: ≥ 0.8, ≤ 3.0:1, ≥ 0.6, ≤ 3.5:1, ≤ 6.0:1, ≤ 0.4:1

Light Trespass

Table with 3 columns: Distance to ROW, Max. Horizontal Illuminance, Max. Vertical Illuminance. Values: N/A, N/A, N/A

Notes

- 1. Set-Back is from Edge of Pavement (white line) except for sign luminaires when it is vertical and horizontal distance from the sign to the luminaire.
2. Lighting calculations shall be performed with all luminaires oriented toward and perpendicular to the roadway.
3. Total Light Loss Factor (LLF) = the product of "Lumen Maintenance" (LLD) = 0.9, "Dirt Depreciation" (LDD) = 0.8, and "Equipment Factors" (EF) = 0.95.
4. Performance requirements shall be the minimum acceptable standards of photometric performance for the luminaire, based on the given conditions listed above.

INITIAL LUMENS OF THE PROPOSED LUMINAIRE MAY VARY FROM THE VALUES SPECIFIED IN THE TABLE GIVEN IN ARTICLE 1067.06 OF BDE SPECIAL PROVISION OF LUMINAIRE, LED. PERFORMANCE CRITERIA SHALL BE HELD TO ONE SIGNIFICANT DIGIT.

Printed 02/09/22

BDE 5630 (04/10/19)



Luminaire Performance Table



Project

Table with 4 columns: Date, Contract Number, Section Number, County. Values: 02/09/22, 68G73, 90(6,106)L, Tazewell

Table with 2 columns: Marked Route Number, Municipality. Values: I-474, Tazewell County

Roadway

Table with 5 columns: Lane Width, # of Lanes, Median Width, I.E.S. Surface Classification, Q-Zero Value. Values: 12 ft, 3, N/A, R3, 0.07

Structure

Table with 4 columns: Mounting Height, Arm Length, Set-Back, Number of Luminaires. Values: 45.0 FT., 1.0 FT., 30 FT., N/A

Luminaire

Table with 4 columns: Description, I.E.S. Lateral Distribution, I.E.S. Vertical Distribution, Total Light Loss Factor (LLF). Values: LED, OUTPUT DESIGNATION H, TYPE II, MEDIUM, 0.7

Layout

Table with 2 columns: Spacing (to Nearest 5 ft), Configuration. Values: 280 FT., ONE SIDED

Performance

Table with 4 columns: Average Illuminance, Uniformity Ratio, Average Luminance, Veiling Luminance Ratio. Values: ≥ 0.8, ≤ 3.0:1, ≥ 0.6, ≤ 3.5:1, ≤ 6.0:1, ≤ 0.4:1

Light Trespass

Table with 3 columns: Distance to ROW, Max. Horizontal Illuminance, Max. Vertical Illuminance. Values: N/A, N/A, N/A

Notes

- 1. Set-Back is from Edge of Pavement (white line) except for sign luminaires when it is vertical and horizontal distance from the sign to the luminaire.
2. Lighting calculations shall be performed with all luminaires oriented toward and perpendicular to the roadway.
3. Total Light Loss Factor (LLF) = the product of "Lumen Maintenance" (LLD) = 0.9, "Dirt Depreciation" (LDD) = 0.8, and "Equipment Factors" (EF) = 0.95.
4. Performance requirements shall be the minimum acceptable standards of photometric performance for the luminaire, based on the given conditions listed above.

INITIAL LUMENS OF THE PROPOSED LUMINAIRE MAY VARY FROM THE VALUES SPECIFIED IN THE TABLE GIVEN IN ARTICLE 1067.06 OF BDE SPECIAL PROVISION OF LUMINAIRE, LED. PERFORMANCE CRITERIA SHALL BE HELD TO ONE SIGNIFICANT DIGIT.

Printed 02/09/22

BDE 5630 (04/10/19)

MODEL Path: ... FILE NAME: ...

Table with 4 columns: USER NAME, DESIGNED, DRAWN, PLOT SCALE, PLOT DATE. Values: howalter, -, -, 206,2628' / in., 2/10/2022

Table with 4 columns: DESIGNED, REVISED, CHECKED, DATE. Values: -, -, -, -

STATE OF ILLINOIS DEPARTMENT OF TRANSPORTATION

Table with 2 columns: SCALE, SHEET OF SHEETS. Values: TO STA., TO STA.

Table with 5 columns: F.A.I. RTE., SECTION, COUNTY, TOTAL SHEETS, SHEET NO. Values: 90(6,106)L, TAZEWELL, 20, 20

* FAI 474, FAI 155

ILLINOIS FED. AID PROJECT